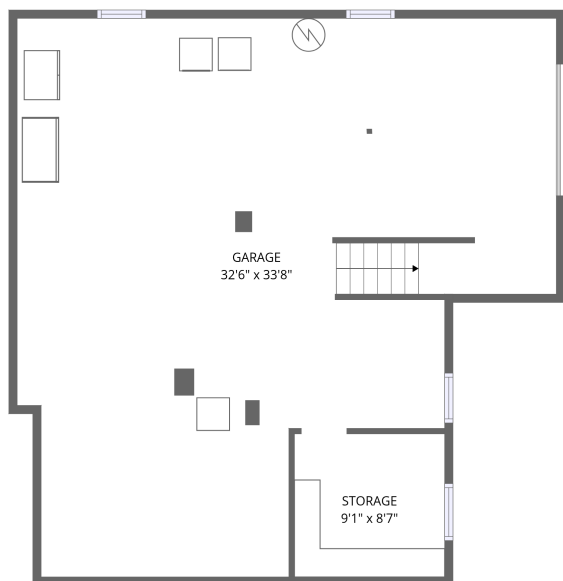
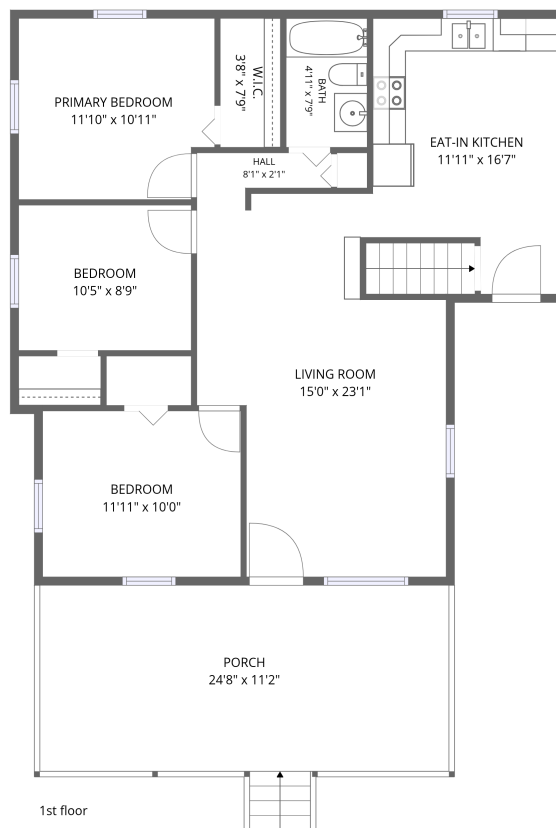


Home data report

706 8th St, Shelbyville, IN, US



Basement



1st floor

Total Area: 963 sq. ft

Basement: 0 sq. ft, 1st Floor: 963 sq. ft

Excluded: Storage 78 sq. ft, Garage 877 sq. ft, Porch 289 sq. ft, Walls: 142 sq. ft

Property summary



2
Floors



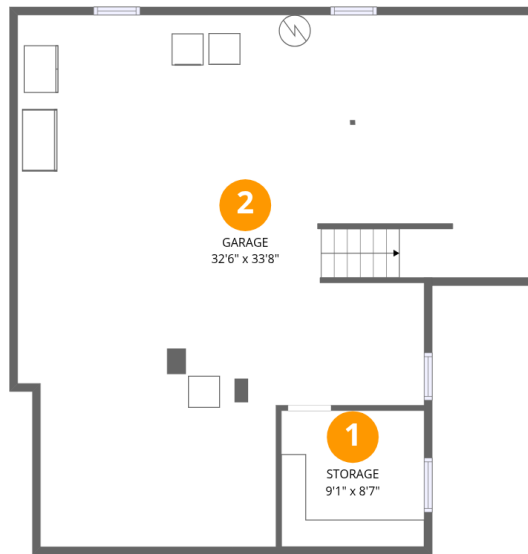
3
Bedrooms



1
Bathrooms



1
Garages



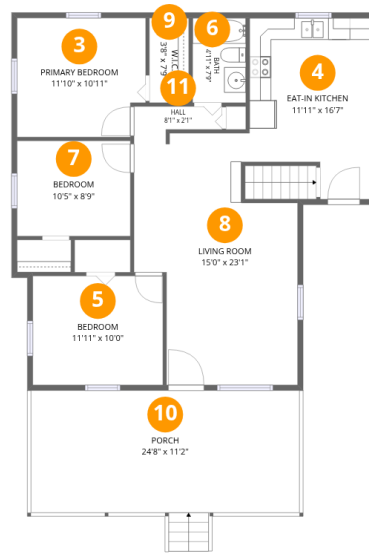
Room dimensions

Floor 1 Below grade

Total: 0sqft

Excluded: 955sqft

#		Dimensions	sqft	Counted as living area
1	Storage	9'1" x 8'7"	78 sq. ft	No
2	Garage	32'6" x 33'8"	877 sq. ft	No



Room dimensions

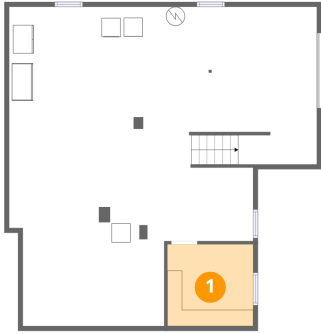
Floor 2

Total:963sqft

Excluded: 289sqft

#		Dimensions	sqft	Counted as living area
3	Primary Bedroom	11'10" x 10'11"	124 sq. ft	Yes
4	Eat-in Kitchen	11'11" x 16'7"	165 sq. ft	Yes
5	Bedroom	11'11" x 10'0"	119 sq. ft	Yes
6	Bath	4'11" x 7'9"	38 sq. ft	Yes
7	Bedroom	10'5" x 8'9"	91 sq. ft	Yes
8	Living Room	15'0" x 23'1"	284 sq. ft	Yes
9	W.I.C.	3'8" x 7'9"	28 sq. ft	Yes
10	Porch	24'8" x 11'2"	289 sq. ft	No
11	Hall	8'1" x 2'1"	17 sq. ft	Yes

1 Floor 1 - Storage



Dimensions: 9'1" x 8'7"
Area: 78 sq. ft
Counted as living area: No

Heated: No
Finished: No
Enclosed: No
Contiguous: Yes
Permitted: Yes
Wet space: No
Addition: No
Conversion: No

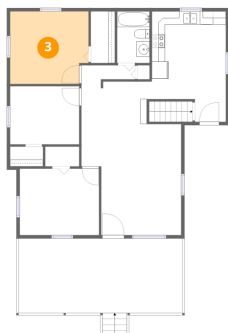
2 Floor 1 - Garage



Dimensions: 32'6" x 33'8"
Area: 877 sq. ft
Counted as living area: No

Heated: No
Finished: No
Enclosed: Yes
Contiguous: Yes
Permitted: Yes
Wet space: No
Addition: No
Conversion: No

3 Floor 2 - Primary Bedroom



Dimensions: 11'10" x 10'11"

Area: 124 sq. ft

Counted as living area: Yes

Heated: Yes

Finished: Yes

Enclosed: Yes

Contiguous: Yes

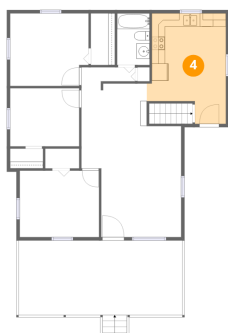
Permitted: Yes

Wet space: No

Addition: No

Conversion: No

4 Floor 2 - Eat-in Kitchen



Dimensions: 11'11" x 16'7"

Area: 165 sq. ft

Counted as living area: Yes

Heated: Yes

Finished: Yes

Enclosed: Yes

Contiguous: Yes

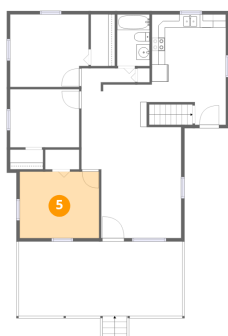
Permitted: Yes

Wet space: No

Addition: No

Conversion: No

5 Floor 2 - Bedroom



Dimensions: 11'11" x 10'0"

Area: 119 sq. ft

Counted as living area: Yes

Heated: Yes

Finished: Yes

Enclosed: Yes

Contiguous: Yes

Permitted: Yes

Wet space: No

Addition: No

Conversion: No

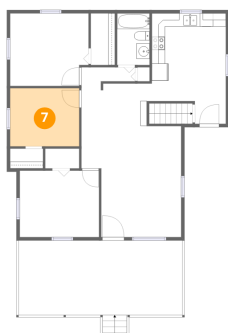
6 Floor 2 - Bath



Dimensions: 4'11" x 7'9"
Area: 38 sq. ft
Counted as living area: Yes

Heated: Yes
Finished: Yes
Enclosed: Yes
Contiguous: Yes
Permitted: Yes
Wet space: Yes
Addition: No
Conversion: No

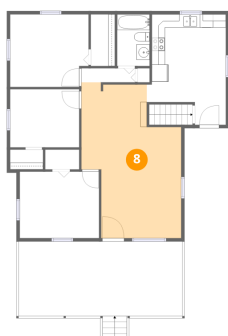
7 Floor 2 - Bedroom



Dimensions: 10'5" x 8'9"
Area: 91 sq. ft
Counted as living area: Yes

Heated: Yes
Finished: Yes
Enclosed: Yes
Contiguous: Yes
Permitted: Yes
Wet space: No
Addition: No
Conversion: No

8 Floor 2 - Living Room



Dimensions: 15'0" x 23'1"
Area: 284 sq. ft
Counted as living area: Yes

Heated: Yes
Finished: Yes
Enclosed: Yes
Contiguous: Yes
Permitted: Yes
Wet space: No
Addition: No
Conversion: No

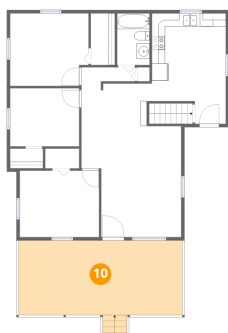
9 Floor 2 - W.I.C.



Dimensions: 3'8" x 7'9"
Area: 28 sq. ft
Counted as living area: Yes

Heated: Yes
Finished: Yes
Enclosed: Yes
Contiguous: Yes
Permitted: Yes
Wet space: No
Addition: No
Conversion: No

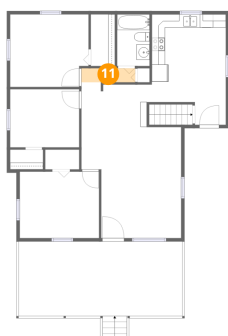
10 Floor 2 - Porch



Dimensions: 24'8" x 11'2"
Area: 289 sq. ft
Counted as living area: No

Heated: No
Finished: No
Enclosed: No
Contiguous: Yes
Permitted: Yes
Wet space: No
Addition: No
Conversion: No

11 Floor 2 - Hall



Dimensions: 8'1" x 2'1"
Area: 17 sq. ft
Counted as living area: Yes

Heated: Yes
Finished: Yes
Enclosed: Yes
Contiguous: Yes
Permitted: Yes
Wet space: No
Addition: No
Conversion: No