

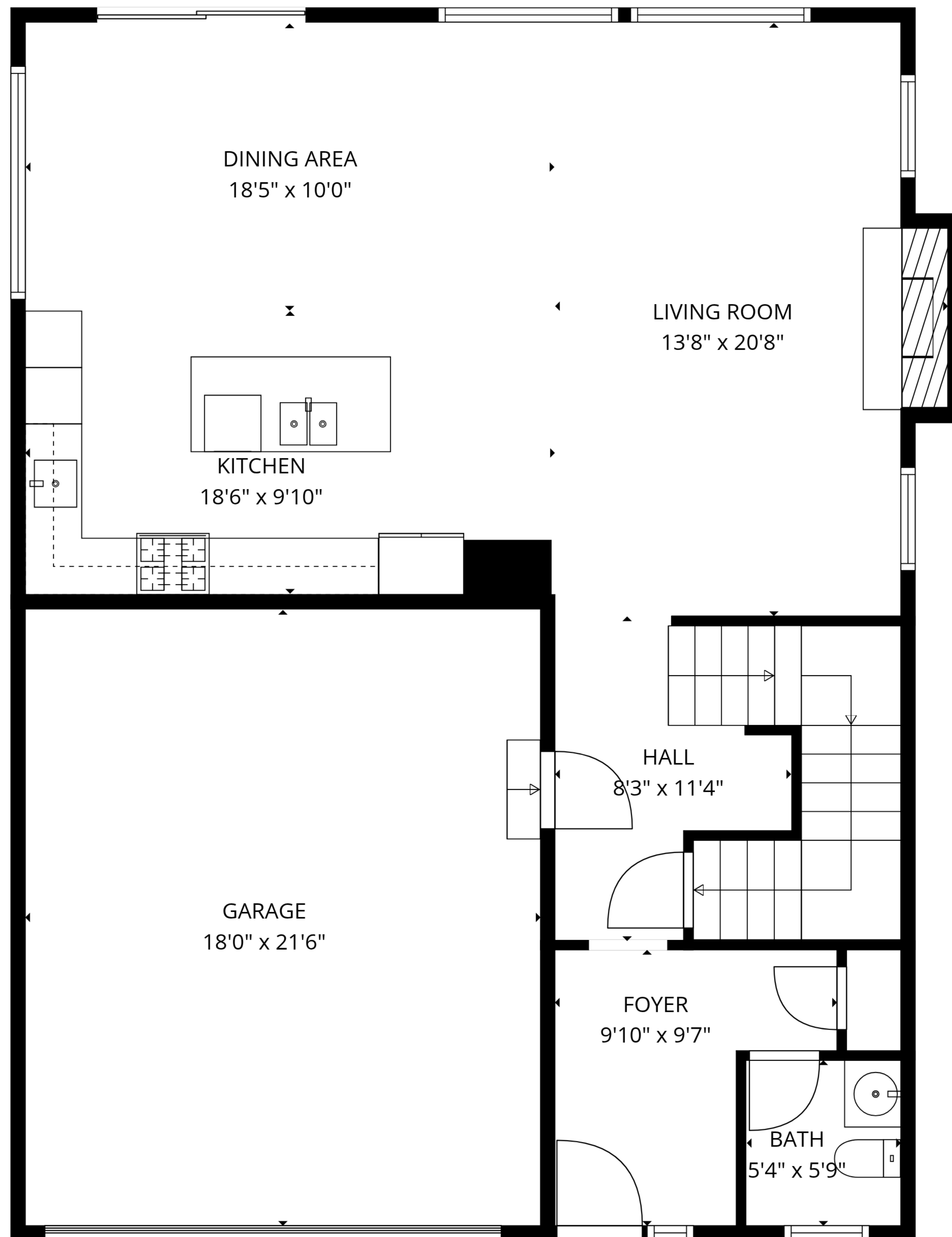
BEDROOM
13'8" x 14'7"

RECREATION ROOM
16'6" x 32'0"

BATH
9'11" x 5'0"

HALL
3'5" x 3'5"

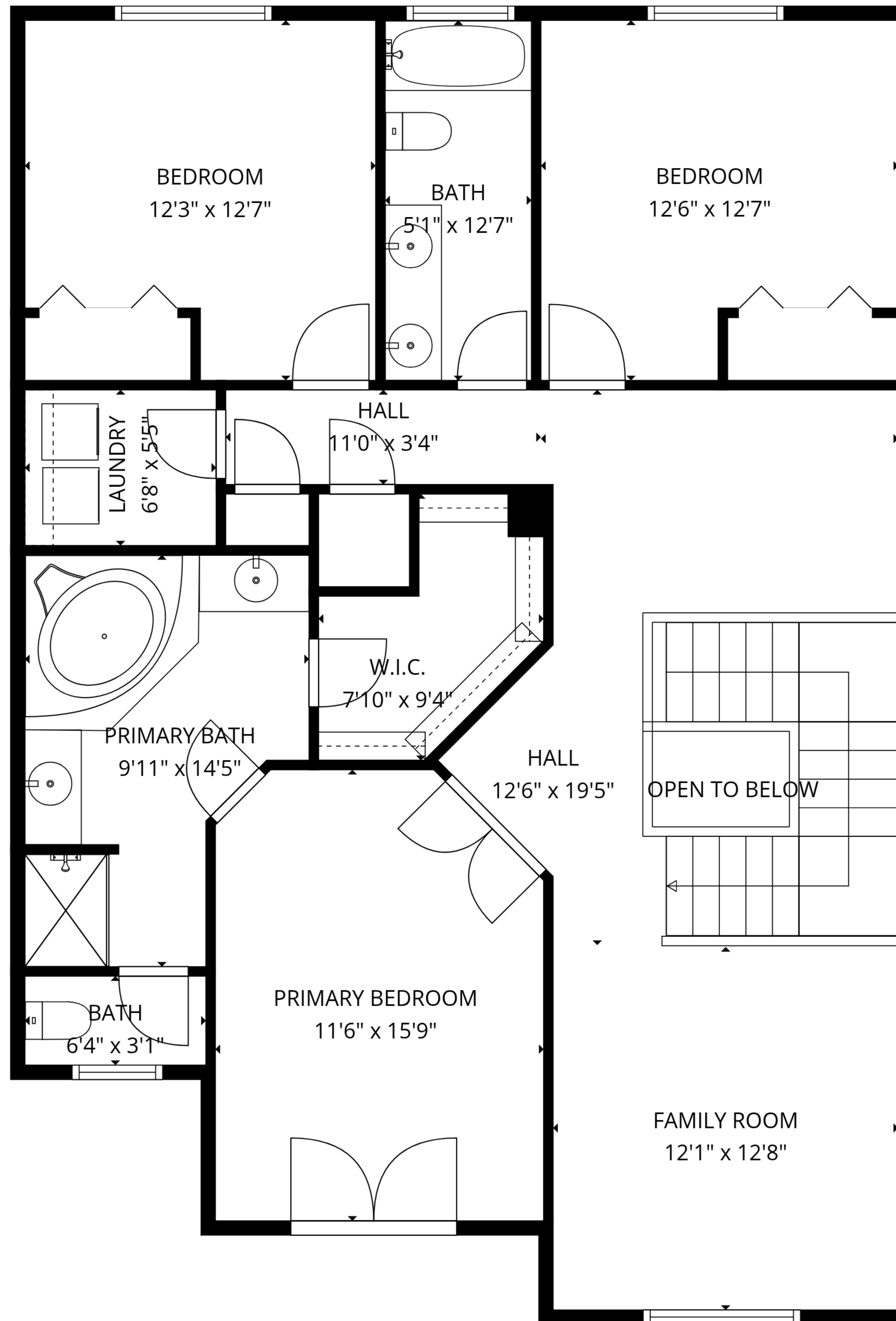
TOTAL: 2901 sq. ft
Basement: 755 sq. ft, 1st floor: 879 sq. ft, 2nd floor: 1267 sq. ft
EXCLUDED AREAS: GARAGE: 387 sq. ft, FIREPLACE: 12 sq. ft, OPEN TO BELOW: 16 sq. ft,
WALLS: 231 sq. ft



TOTAL: 2901 sq. ft

Basement: 755 sq. ft, 1st floor: 879 sq. ft, 2nd floor: 1267 sq. ft

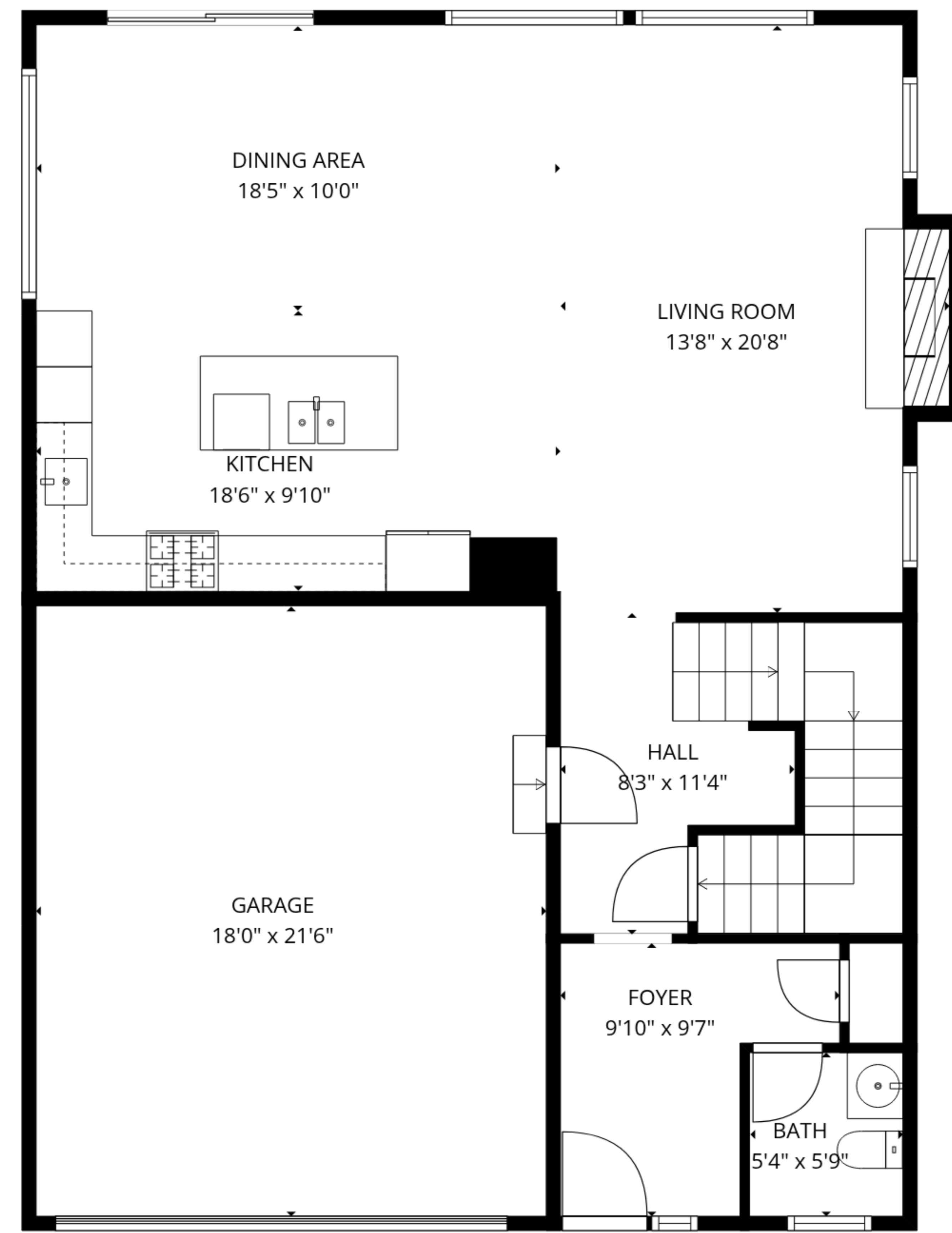
EXCLUDED AREAS: GARAGE: 387 sq. ft, FIREPLACE: 12 sq. ft, OPEN TO BELOW: 16 sq. ft,
WALLS: 231 sq. ft



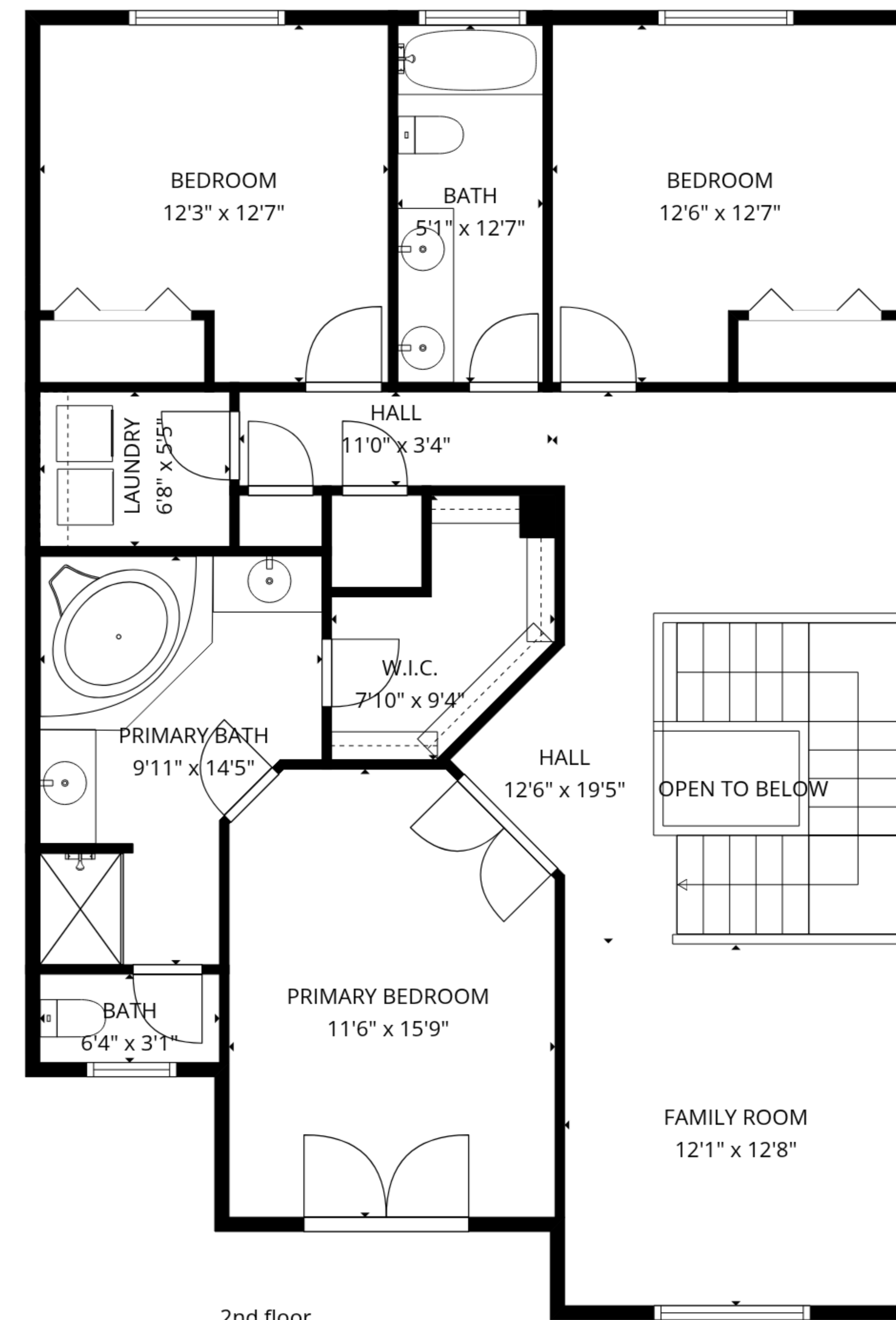
TOTAL: 2901 sq. ft

Basement: 755 sq. ft, 1st floor: 879 sq. ft, 2nd floor: 1267 sq. ft

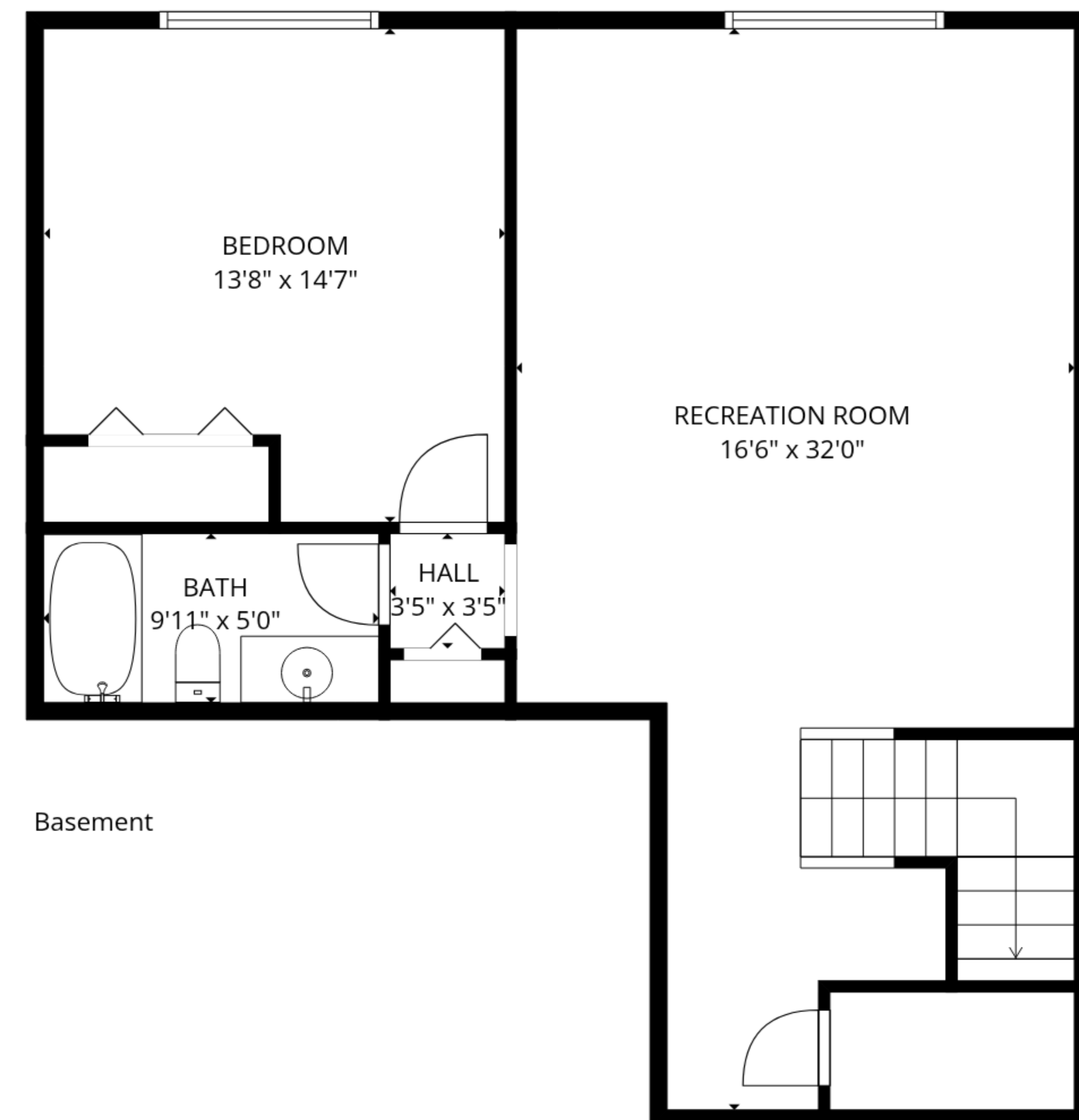
EXCLUDED AREAS: GARAGE: 387 sq. ft, FIREPLACE: 12 sq. ft, OPEN TO BELOW: 16 sq. ft,
WALLS: 231 sq. ft



1st floor



2nd floor



Basement

TOTAL: 2901 sq. ft
 Basement: 755 sq. ft, 1st floor: 879 sq. ft, 2nd floor: 1267 sq. ft
 EXCLUDED AREAS: GARAGE: 387 sq. ft, FIREPLACE: 12 sq. ft, OPEN TO BELOW: 16 sq. ft,
 WALLS: 231 sq. ft