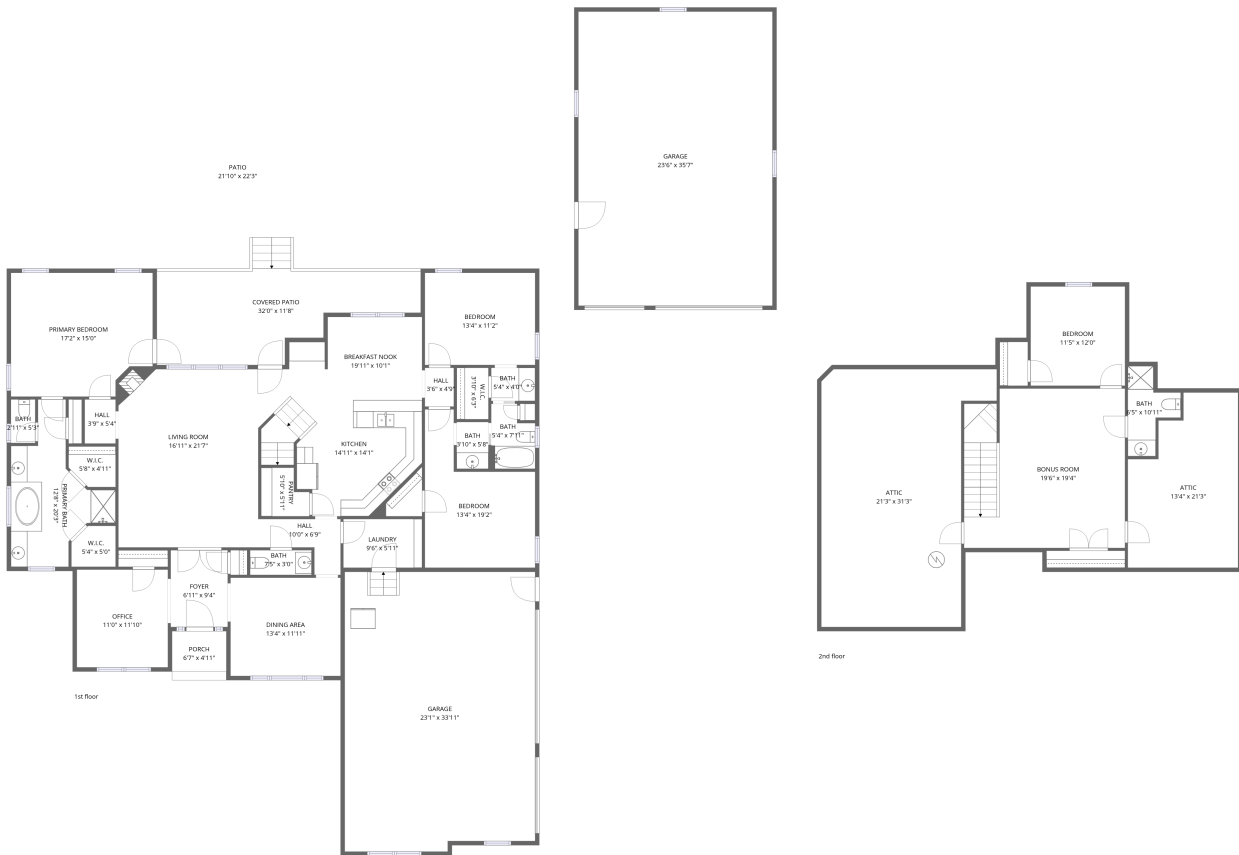


Home data report

115 Holbrook Drive, Huntsville, Madison County, Alabama,
United States, 35806




Total Area: 3069 sq. ft

1st Floor: 2468 sq. ft, 2nd Floor: 601 sq. ft

Excluded: Garage 1708 sq. ft, Porch 32 sq. ft, Patio 461 sq. ft, Covered patio 283 sq. ft, Attic 855 sq. ft, Low ceiling 50 sq. ft

Property summary

 **2** Floors

 **4** Bedrooms

 **3** Bathrooms

Home data report

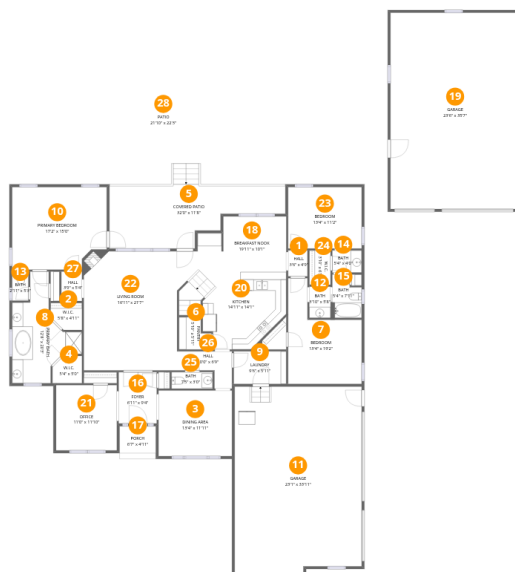
**115 Holbrook Drive, Huntsville, Madison County, Alabama,
United States, 35806**

 **1**
Half baths

 **2**
Garages

Home data report

115 Holbrook Drive, Huntsville, Madison County, Alabama, United States, 35806



Room dimensions

Floor 1

Total:2468sqft

Excluded: 2484sqft

#		Dimensions	sqft	Counted as living area
1	Hall	3'6" x 4'9"	17 sq. ft	Yes
2	W.I.C.	5'8" x 4'11"	28 sq. ft	Yes
3	Dining Area	13'4" x 11'11"	159 sq. ft	Yes
4	W.I.C.	5'4" x 5'0"	27 sq. ft	Yes
5	Covered Patio	32'0" x 11'8"	373 sq. ft	No
6	Pantry	5'10" x 5'11"	34 sq. ft	Yes
7	Bedroom	13'4" x 19'2"	257 sq. ft	Yes
8	Primary Bath	12'8" x 20'3"	257 sq. ft	Yes
9	Laundry	9'6" x 5'11"	56 sq. ft	Yes
10	Primary Bedroom	17'2" x 15'0"	257 sq. ft	Yes
11	Garage	23'1" x 33'11"	782 sq. ft	No

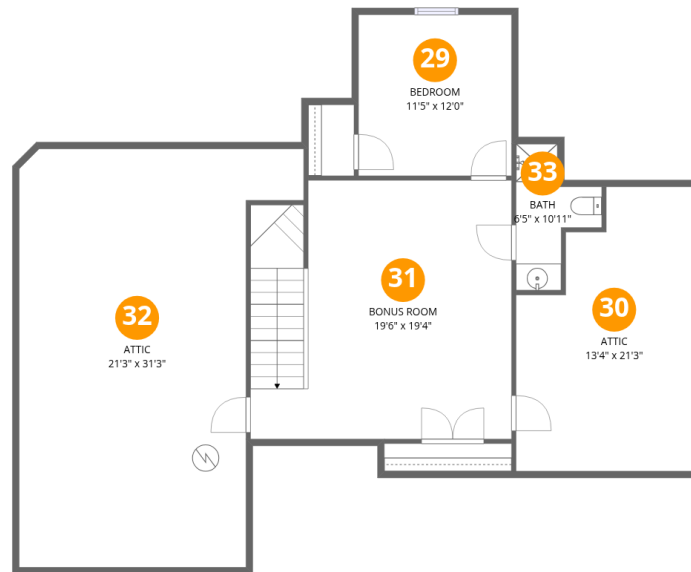
Home data report

**115 Holbrook Drive, Huntsville, Madison County, Alabama,
United States, 35806**

#		Dimensions	sqft	Counted as living area
12	Bath	3'10" x 5'8"	22 sq. ft	Yes
13	Bath	2'11" x 5'3"	16 sq. ft	Yes
14	Bath	5'4" x 4'0"	21 sq. ft	Yes
15	Bath	5'4" x 7'11"	42 sq. ft	Yes
16	Foyer	6'11" x 9'4"	64 sq. ft	Yes
17	Porch	6'7" x 4'11"	32 sq. ft	No
18	Breakfast Nook	19'11" x 10'1"	201 sq. ft	Yes
19	Garage	23'6" x 35'7"	838 sq. ft	No
20	Kitchen	14'11" x 14'1"	209 sq. ft	Yes
21	Office	11'0" x 11'10"	130 sq. ft	Yes
22	Living Room	16'11" x 21'7"	366 sq. ft	Yes
23	Bedroom	13'4" x 11'2"	149 sq. ft	Yes
24	W.I.C.	3'10" x 6'3"	24 sq. ft	Yes
25	Bath	7'5" x 3'0"	22 sq. ft	Yes
26	Hall	10'0" x 6'9"	68 sq. ft	Yes
27	Hall	3'9" x 5'4"	20 sq. ft	Yes
28	Patio	21'10" x 22'3"	486 sq. ft	No

Home data report

115 Holbrook Drive, Huntsville, Madison County, Alabama, United States, 35806



Room dimensions

Floor 2

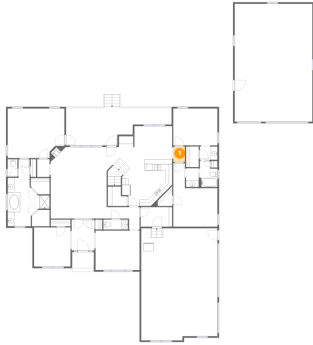
Total:601sqft

Excluded: 905sqft

#		Dimensions	sqft	Counted as living area
29	Bedroom	11'5" x 12'0"	138 sq. ft	Yes
30	Attic	13'4" x 21'3"	284 sq. ft	No
31	Bonus Room	19'6" x 19'4"	377 sq. ft	Yes
32	Attic	21'3" x 31'3"	664 sq. ft	No
33	Bath	6'5" x 10'11"	70 sq. ft	No

115 Holbrook Drive, Huntsville, Madison County, Alabama,
United States, 35806

1 Floor 1 - Hall



Dimensions: 3'6" x 4'9"
Area: 17 sq. ft
Counted as living area: Yes

Heated: Yes
Finished: Yes
Enclosed: Yes
Contiguous: Yes
Permitted: Yes
Wet space: No
Addition: No
Conversion: No

2 Floor 1 - W.I.C.

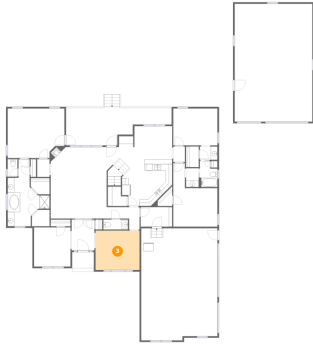


Dimensions: 5'8" x 4'11"
Area: 28 sq. ft
Counted as living area: Yes

Heated: Yes
Finished: Yes
Enclosed: Yes
Contiguous: Yes
Permitted: Yes
Wet space: No
Addition: No
Conversion: No

115 Holbrook Drive, Huntsville, Madison County, Alabama,
United States, 35806

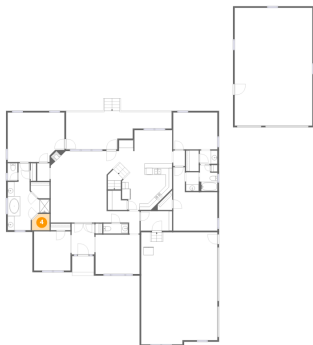
3 Floor 1 - Dining Area



Dimensions: 13'4" x 11'11"
Area: 159 sq. ft
Counted as living area: Yes

Heated: Yes
Finished: Yes
Enclosed: Yes
Contiguous: Yes
Permitted: Yes
Wet space: No
Addition: No
Conversion: No

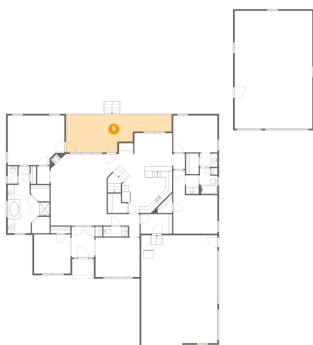
4 Floor 1 - W.I.C.



Dimensions: 5'4" x 5'0"
Area: 27 sq. ft
Counted as living area: Yes

Heated: Yes
Finished: Yes
Enclosed: Yes
Contiguous: Yes
Permitted: Yes
Wet space: No
Addition: No
Conversion: No

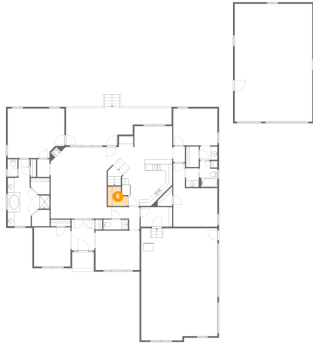
5 Floor 1 - Covered Patio



Dimensions: 32'0" x 11'8"
Area: 373 sq. ft
Counted as living area: No

Heated: No
Finished: No
Enclosed: No
Contiguous: Yes
Permitted: Yes
Wet space: No
Addition: No
Conversion: No

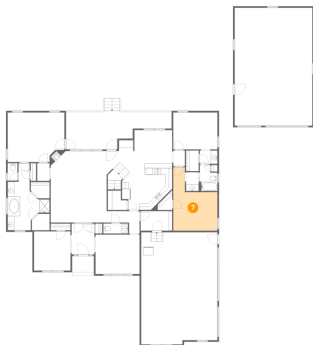
6 Floor 1 - Pantry



Dimensions: 5'10" x 5'11"
Area: 34 sq. ft
Counted as living area: Yes

Heated: Yes
Finished: Yes
Enclosed: Yes
Contiguous: Yes
Permitted: Yes
Wet space: No
Addition: No
Conversion: No

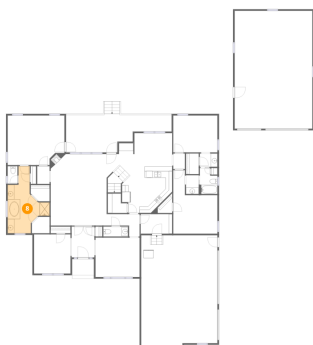
7 Floor 1 - Bedroom



Dimensions: 13'4" x 19'2"
Area: 257 sq. ft
Counted as living area: Yes

Heated: Yes
Finished: Yes
Enclosed: Yes
Contiguous: Yes
Permitted: Yes
Wet space: No
Addition: No
Conversion: No

8 Floor 1 - Primary Bath



Dimensions: 12'8" x 20'3"
Area: 257 sq. ft
Counted as living area: Yes

Heated: Yes
Finished: Yes
Enclosed: Yes
Contiguous: Yes
Permitted: Yes
Wet space: Yes
Addition: No
Conversion: No

115 Holbrook Drive, Huntsville, Madison County, Alabama,
United States, 35806

9 Floor 1 - Laundry



Dimensions: 9'6" x 5'11"
Area: 56 sq. ft
Counted as living area: Yes

Heated: Yes
Finished: Yes
Enclosed: Yes
Contiguous: Yes
Permitted: Yes
Wet space: No
Addition: No
Conversion: No

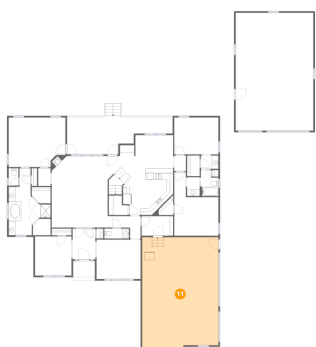
10 Floor 1 - Primary Bedroom



Dimensions: 17'2" x 15'0"
Area: 257 sq. ft
Counted as living area: Yes

Heated: Yes
Finished: Yes
Enclosed: Yes
Contiguous: Yes
Permitted: Yes
Wet space: No
Addition: No
Conversion: No

11 Floor 1 - Garage

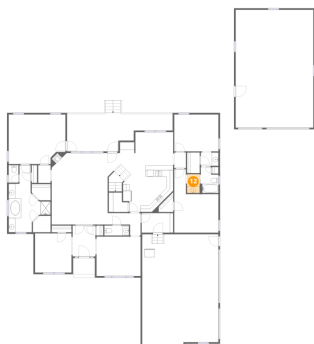


Dimensions: 23'1" x 33'11"
Area: 782 sq. ft
Counted as living area: No

Heated: No
Finished: No
Enclosed: Yes
Contiguous: Yes
Permitted: Yes
Wet space: No
Addition: No
Conversion: No

115 Holbrook Drive, Huntsville, Madison County, Alabama,
United States, 35806

12 Floor 1 - Bath



Dimensions: 3'10" x 5'8"
Area: 22 sq. ft
Counted as living area: Yes

Heated: Yes
Finished: Yes
Enclosed: Yes
Contiguous: Yes
Permitted: Yes
Wet space: Yes
Addition: No
Conversion: No

13 Floor 1 - Bath



Dimensions: 2'11" x 5'3"
Area: 16 sq. ft
Counted as living area: Yes

Heated: Yes
Finished: Yes
Enclosed: Yes
Contiguous: Yes
Permitted: Yes
Wet space: Yes
Addition: No
Conversion: No

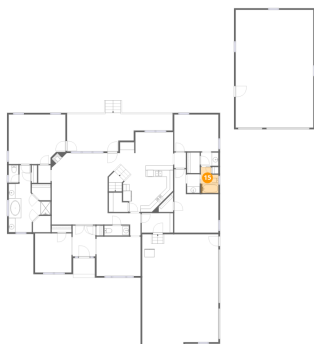
14 Floor 1 - Bath



Dimensions: 5'4" x 4'0"
Area: 21 sq. ft
Counted as living area: Yes

Heated: Yes
Finished: Yes
Enclosed: Yes
Contiguous: Yes
Permitted: Yes
Wet space: Yes
Addition: No
Conversion: No

15 Floor 1 - Bath



Dimensions: 5'4" x 7'11"
Area: 42 sq. ft
Counted as living area: Yes

Heated: Yes
Finished: Yes
Enclosed: Yes
Contiguous: Yes
Permitted: Yes
Wet space: Yes
Addition: No
Conversion: No

16 Floor 1 - Foyer



Dimensions: 6'11" x 9'4"
Area: 64 sq. ft
Counted as living area: Yes

Heated: Yes
Finished: Yes
Enclosed: Yes
Contiguous: Yes
Permitted: Yes
Wet space: No
Addition: No
Conversion: No

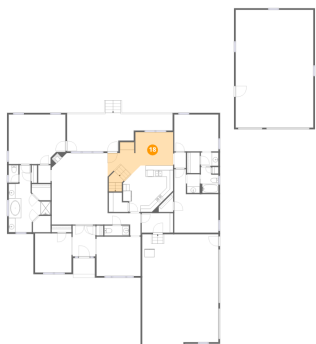
17 Floor 1 - Porch



Dimensions: 6'7" x 4'11"
Area: 32 sq. ft
Counted as living area: No

Heated: No
Finished: No
Enclosed: No
Contiguous: Yes
Permitted: Yes
Wet space: No
Addition: No
Conversion: No

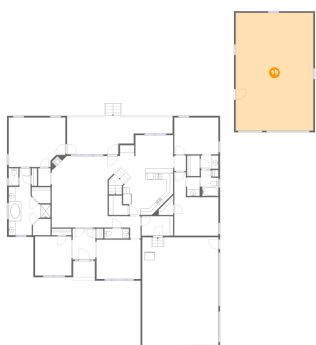
18 Floor 1 - Breakfast Nook



Dimensions: 19'11" x 10'1"
Area: 201 sq. ft
Counted as living area: Yes

Heated: Yes
Finished: Yes
Enclosed: Yes
Contiguous: Yes
Permitted: Yes
Wet space: No
Addition: No
Conversion: No

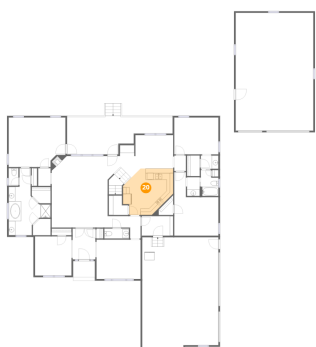
19 Floor 1 - Garage



Dimensions: 23'6" x 35'7"
Area: 838 sq. ft
Counted as living area: No

Heated: No
Finished: No
Enclosed: Yes
Contiguous: Yes
Permitted: Yes
Wet space: No
Addition: No
Conversion: No

20 Floor 1 - Kitchen

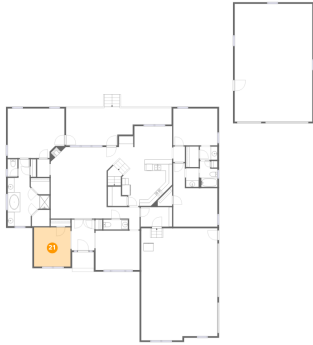


Dimensions: 14'11" x 14'1"
Area: 209 sq. ft
Counted as living area: Yes

Heated: Yes
Finished: Yes
Enclosed: Yes
Contiguous: Yes
Permitted: Yes
Wet space: No
Addition: No
Conversion: No

115 Holbrook Drive, Huntsville, Madison County, Alabama,
United States, 35806

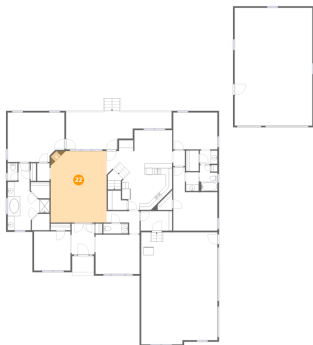
21 Floor 1 - Office



Dimensions: 11'0" x 11'10"
Area: 130 sq. ft
Counted as living area: Yes

Heated: Yes
Finished: Yes
Enclosed: Yes
Contiguous: Yes
Permitted: Yes
Wet space: No
Addition: No
Conversion: No

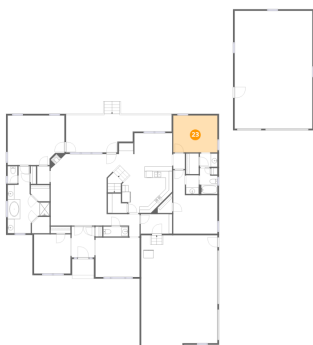
22 Floor 1 - Living Room



Dimensions: 16'11" x 21'7"
Area: 366 sq. ft
Counted as living area: Yes

Heated: Yes
Finished: Yes
Enclosed: Yes
Contiguous: Yes
Permitted: Yes
Wet space: No
Addition: No
Conversion: No

23 Floor 1 - Bedroom



Dimensions: 13'4" x 11'2"
Area: 149 sq. ft
Counted as living area: Yes

Heated: Yes
Finished: Yes
Enclosed: Yes
Contiguous: Yes
Permitted: Yes
Wet space: No
Addition: No
Conversion: No

24 Floor 1 - W.I.C.



Dimensions: 3'10" x 6'3"
Area: 24 sq. ft
Counted as living area: Yes

Heated: Yes
Finished: Yes
Enclosed: Yes
Contiguous: Yes
Permitted: Yes
Wet space: No
Addition: No
Conversion: No

25 Floor 1 - Bath



Dimensions: 7'5" x 3'0"
Area: 22 sq. ft
Counted as living area: Yes

Heated: Yes
Finished: Yes
Enclosed: Yes
Contiguous: Yes
Permitted: Yes
Wet space: Yes
Addition: No
Conversion: No

26 Floor 1 - Hall



Dimensions: 10'0" x 6'9"
Area: 68 sq. ft
Counted as living area: Yes

Heated: Yes
Finished: Yes
Enclosed: Yes
Contiguous: Yes
Permitted: Yes
Wet space: No
Addition: No
Conversion: No

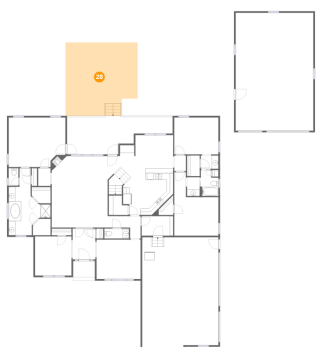
27 Floor 1 - Hall



Dimensions: 3'9" x 5'4"
Area: 20 sq. ft
Counted as living area: Yes

Heated: Yes
Finished: Yes
Enclosed: Yes
Contiguous: Yes
Permitted: Yes
Wet space: No
Addition: No
Conversion: No

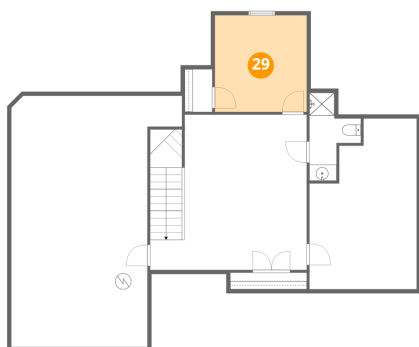
28 Floor 1 - Patio



Dimensions: 21'10" x 22'3"
Area: 486 sq. ft
Counted as living area: No

Heated: No
Finished: No
Enclosed: No
Contiguous: Yes
Permitted: Yes
Wet space: No
Addition: No
Conversion: No

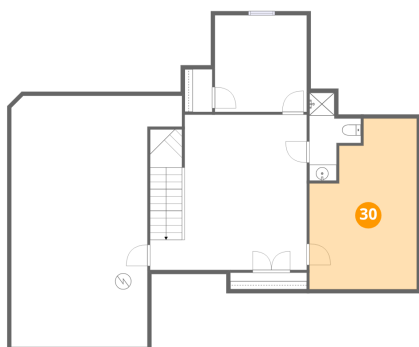
29 Floor 2 - Bedroom



Dimensions: 11'5" x 12'0"
Area: 138 sq. ft
Counted as living area: Yes

Heated: Yes
Finished: Yes
Enclosed: Yes
Contiguous: Yes
Permitted: Yes
Wet space: No
Addition: No
Conversion: No

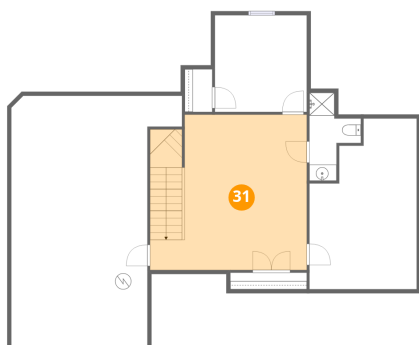
30 Floor 2 - Attic



Dimensions: 13'4" x 21'3"
Area: 284 sq. ft
Counted as living area: No

Heated: No
Finished: No
Enclosed: Yes
Contiguous: Yes
Permitted: Yes
Wet space: No
Addition: No
Conversion: No

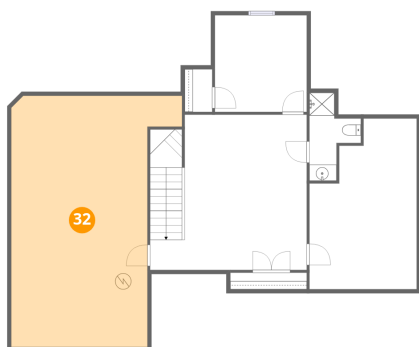
31 Floor 2 - Bonus Room



Dimensions: 19'6" x 19'4"
Area: 377 sq. ft
Counted as living area: Yes

Heated: Yes
Finished: Yes
Enclosed: Yes
Contiguous: Yes
Permitted: Yes
Wet space: No
Addition: No
Conversion: No

32 Floor 2 - Attic



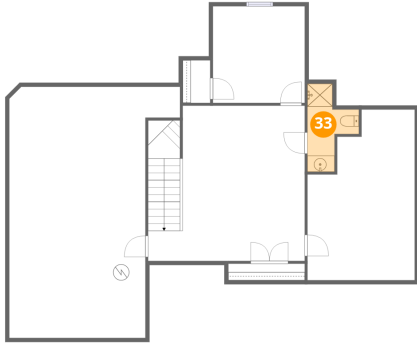
Dimensions: 21'3" x 31'3"
Area: 664 sq. ft
Counted as living area: No

Heated: No
Finished: No
Enclosed: Yes
Contiguous: Yes
Permitted: Yes
Wet space: No
Addition: No
Conversion: No

Home data report

115 Holbrook Drive, Huntsville, Madison County, Alabama,
United States, 35806

33 Floor 2 - Bath



Dimensions: 6'5" x 10'11"
Area: 70 sq. ft
Counted as living area: No

Heated: Yes
Finished: Yes
Enclosed: Yes
Contiguous: Yes
Permitted: Yes
Wet space: Yes
Addition: No
Conversion: No