

Home report

7313 Maple Court Southwest, Woods Crossing, Cave Spring,
Roanoke, Roanoke County, Virginia, United States, 24018



Total Area: 1382 sq. ft

Floor 1: 416 sq. ft, Floor 2: 484 sq. ft, Floor 3: 482 sq. ft

Excluded: Covered deck 84 sq. ft, Utility 34 sq. ft, Undefined 19 sq. ft, Porch 48 sq. ft, Deck 81 sq. ft, Fireplace 9 sq. ft, Walls: 105 sq. ft

Property summary

 **3** Floors

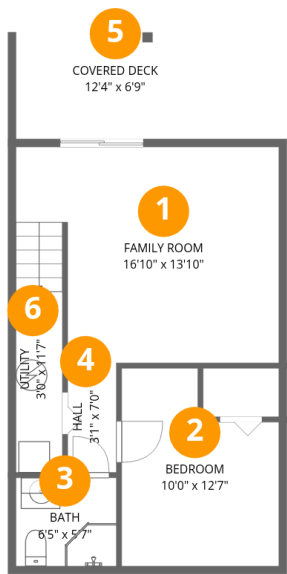
 **3** Bedrooms

 **2** Bathrooms

 **1** Half baths

Home report

7313 Maple Court Southwest, Woods Crossing, Cave Spring,
Roanoke, Roanoke County, Virginia, United States, 24018

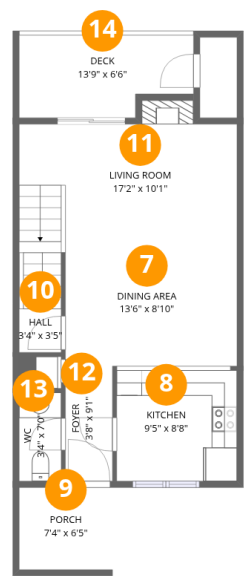


Room dimensions

Floor 1 Total:416sqft Excluded: 118sqft

| # | | Max Dimensions | sqft | Included |
|---|--------------|-----------------|------------|----------|
| 1 | Family Room | 16'10" x 13'10" | 216 sq. ft | Yes |
| 2 | Bedroom | 10'0" x 12'7" | 109 sq. ft | Yes |
| 3 | Bath | 6'5" x 5'7" | 36 sq. ft | Yes |
| 4 | Hall | 3'1" x 7'0" | 22 sq. ft | Yes |
| 5 | Covered Deck | 12'4" x 6'9" | 84 sq. ft | No |
| 6 | Utility | 3'0" x 11'7" | 34 sq. ft | No |

7313 Maple Court Southwest, Woods Crossing, Cave Spring,
Roanoke, Roanoke County, Virginia, United States, 24018

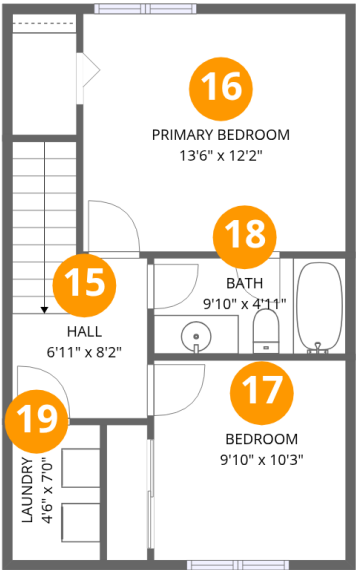


Room dimensions

Floor 2Total:484sqft Excluded: 157sqft

| # | | Max Dimensions | sqft | Included |
|----|-------------|----------------|------------|----------|
| 7 | Dining Area | 13'6" x 8'10" | 121 sq. ft | Yes |
| 8 | Kitchen | 9'5" x 8'8" | 85 sq. ft | Yes |
| 9 | Porch | 7'4" x 6'5" | 48 sq. ft | No |
| 10 | Hall | 3'4" x 3'5" | 26 sq. ft | Yes |
| 11 | Living Room | 17'2" x 10'1" | 181 sq. ft | Yes |
| 12 | Foyer | 3'8" x 9'1" | 34 sq. ft | Yes |
| 13 | WC | 3'4" x 7'0" | 23 sq. ft | Yes |
| 14 | Deck | 13'9" x 6'6" | 81 sq. ft | No |

7313 Maple Court Southwest, Woods Crossing, Cave Spring,
Roanoke, Roanoke County, Virginia, United States, 24018



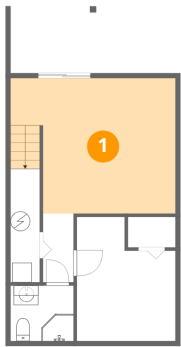
Room dimensions

Floor 3 Total:482sqft Excluded: 0sqft

| # | | Max Dimensions | sqft | Included |
|----|-----------------|----------------|------------|----------|
| 15 | Hall | 6'11" x 8'2" | 77 sq. ft | Yes |
| 16 | Primary Bedroom | 13'6" x 12'2" | 165 sq. ft | Yes |
| 17 | Bedroom | 9'10" x 10'3" | 101 sq. ft | Yes |
| 18 | Bath | 9'10" x 4'11" | 49 sq. ft | Yes |
| 19 | Laundry | 4'6" x 7'0" | 31 sq. ft | Yes |

7313 Maple Court Southwest, Woods Crossing, Cave Spring,
Roanoke, Roanoke County, Virginia, United States, 24018

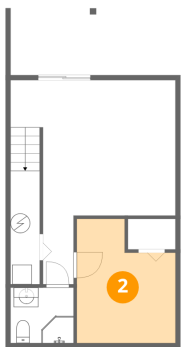
1 Floor 1 - Family Room



Max Dimensions: 16'10" x 13'10"
Calculated Area: 216 sq. ft
Included: Yes

Heated: Yes
Finished: Yes
Enclosed: Yes
Contiguous: Yes
Permitted: Yes
Wet space: No
Addition: No
Conversion: No

2 Floor 1 - Bedroom

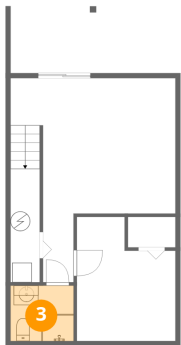


Max Dimensions: 10'0" x 12'7"
Calculated Area: 109 sq. ft
Included: Yes

Heated: Yes
Finished: Yes
Enclosed: Yes
Contiguous: Yes
Permitted: Yes
Wet space: No
Addition: No
Conversion: No

7313 Maple Court Southwest, Woods Crossing, Cave Spring,
Roanoke, Roanoke County, Virginia, United States, 24018

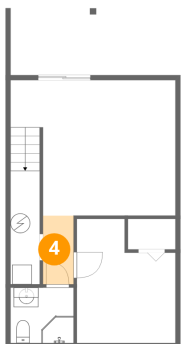
3 Floor 1 - Bath



Max Dimensions: 6'5" x 5'7"
Calculated Area: 36 sq. ft
Included: Yes

Heated: Yes
Finished: Yes
Enclosed: Yes
Contiguous: Yes
Permitted: Yes
Wet space: Yes
Addition: No
Conversion: No

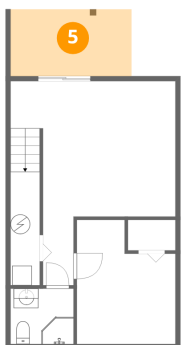
4 Floor 1 - Hall



Max Dimensions: 3'1" x 7'0"
Calculated Area: 22 sq. ft
Included: Yes

Heated: Yes
Finished: Yes
Enclosed: Yes
Contiguous: Yes
Permitted: Yes
Wet space: No
Addition: No
Conversion: No

5 Floor 1 - Covered Deck

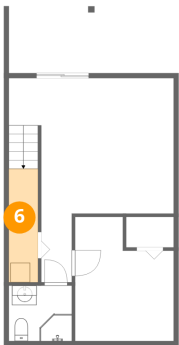


Max Dimensions: 12'4" x 6'9"
Calculated Area: 84 sq. ft
Included: No

Heated: No
Finished: No
Enclosed: No
Contiguous: Yes
Permitted: Yes
Wet space: No
Addition: No
Conversion: No

7313 Maple Court Southwest, Woods Crossing, Cave Spring,
Roanoke, Roanoke County, Virginia, United States, 24018

6 Floor 1 - Utility



Max Dimensions: 3'0" x 11'7"
Calculated Area: 34 sq. ft
Included: No

Heated: Yes
Finished: No
Enclosed: Yes
Contiguous: Yes
Permitted: Yes
Wet space: No
Addition: No
Conversion: No

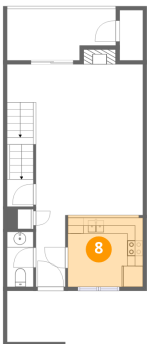
7 Floor 2 - Dining Area



Max Dimensions: 13'6" x 8'10"
Calculated Area: 121 sq. ft
Included: Yes

Heated: Yes
Finished: Yes
Enclosed: Yes
Contiguous: Yes
Permitted: Yes
Wet space: No
Addition: No
Conversion: No

8 Floor 2 - Kitchen

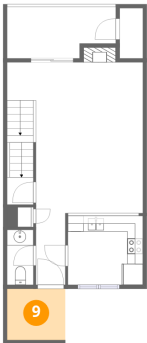


Max Dimensions: 9'5" x 8'8"
Calculated Area: 85 sq. ft
Included: Yes

Heated: Yes
Finished: Yes
Enclosed: Yes
Contiguous: Yes
Permitted: Yes
Wet space: No
Addition: No
Conversion: No

7313 Maple Court Southwest, Woods Crossing, Cave Spring,
Roanoke, Roanoke County, Virginia, United States, 24018

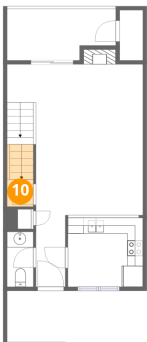
9 Floor 2 - Porch



Max Dimensions: 7'4" x 6'5"
Calculated Area: 48 sq. ft
Included: No

Heated: No
Finished: No
Enclosed: No
Contiguous: Yes
Permitted: Yes
Wet space: No
Addition: No
Conversion: No

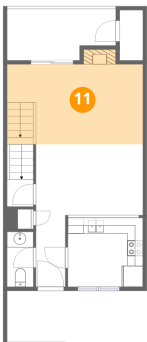
10 Floor 2 - Hall



Max Dimensions: 3'4" x 3'5"
Calculated Area: 26 sq. ft
Included: Yes

Heated: Yes
Finished: Yes
Enclosed: Yes
Contiguous: Yes
Permitted: Yes
Wet space: No
Addition: No
Conversion: No

11 Floor 2 - Living Room



Max Dimensions: 17'2" x 10'1"
Calculated Area: 181 sq. ft
Included: Yes

Heated: Yes
Finished: Yes
Enclosed: Yes
Contiguous: Yes
Permitted: Yes
Wet space: No
Addition: No
Conversion: No

7313 Maple Court Southwest, Woods Crossing, Cave Spring,
Roanoke, Roanoke County, Virginia, United States, 24018

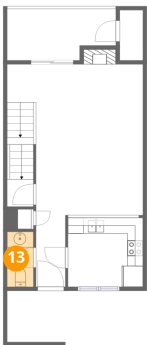
12 Floor 2 - Foyer



Max Dimensions: 3'8" x 9'1"
Calculated Area: 34 sq. ft
Included: Yes

Heated: Yes
Finished: Yes
Enclosed: Yes
Contiguous: Yes
Permitted: Yes
Wet space: No
Addition: No
Conversion: No

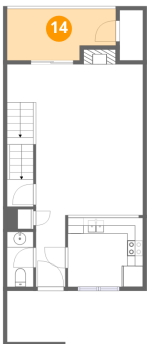
13 Floor 2 - WC



Max Dimensions: 3'4" x 7'0"
Calculated Area: 23 sq. ft
Included: Yes

Heated: Yes
Finished: Yes
Enclosed: Yes
Contiguous: Yes
Permitted: Yes
Wet space: Yes
Addition: No
Conversion: No

14 Floor 2 - Deck

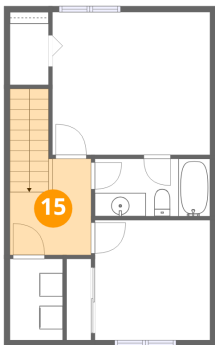


Max Dimensions: 13'9" x 6'6"
Calculated Area: 81 sq. ft
Included: No

Heated: No
Finished: No
Enclosed: No
Contiguous: No
Permitted: Yes
Wet space: No
Addition: No
Conversion: No

7313 Maple Court Southwest, Woods Crossing, Cave Spring,
Roanoke, Roanoke County, Virginia, United States, 24018

15 Floor 3 - Hall



Max Dimensions: 6'11" x 8'2"
Calculated Area: 77 sq. ft
Included: Yes

Heated: Yes
Finished: Yes
Enclosed: Yes
Contiguous: Yes
Permitted: Yes
Wet space: No
Addition: No
Conversion: No

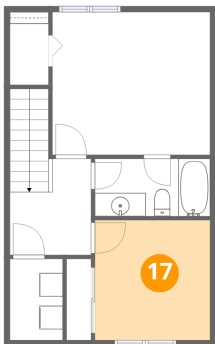
16 Floor 3 - Primary Bedroom



Max Dimensions: 13'6" x 12'2"
Calculated Area: 165 sq. ft
Included: Yes

Heated: Yes
Finished: Yes
Enclosed: Yes
Contiguous: Yes
Permitted: Yes
Wet space: No
Addition: No
Conversion: No

17 Floor 3 - Bedroom

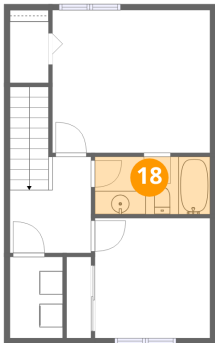


Max Dimensions: 9'10" x 10'3"
Calculated Area: 101 sq. ft
Included: Yes

Heated: Yes
Finished: Yes
Enclosed: Yes
Contiguous: Yes
Permitted: Yes
Wet space: No
Addition: No
Conversion: No

7313 Maple Court Southwest, Woods Crossing, Cave Spring,
Roanoke, Roanoke County, Virginia, United States, 24018

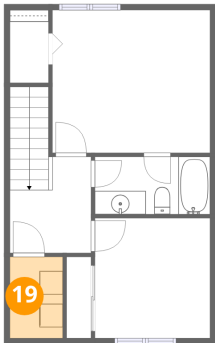
18 Floor 3 - Bath



Max Dimensions: 9'10" x 4'11"
Calculated Area: 49 sq. ft
Included: Yes

Heated: Yes
Finished: Yes
Enclosed: Yes
Contiguous: Yes
Permitted: Yes
Wet space: Yes
Addition: No
Conversion: No

19 Floor 3 - Laundry



Max Dimensions: 4'6" x 7'0"
Calculated Area: 31 sq. ft
Included: Yes

Heated: Yes
Finished: Yes
Enclosed: Yes
Contiguous: Yes
Permitted: Yes
Wet space: No
Addition: No
Conversion: No