

Home report

313 23rd Street Southwest, South Roanoke, Roanoke, Roanoke city, Virginia, United States, 24014, Lower Level & Entry Level



Total Area: 4923 sq. ft

Floor 1: 1374 sq. ft, Floor 2: 3549 sq. ft

Excluded: Safe room 156 sq. ft, Storage 560 sq. ft, Basement 593 sq. ft, Workshop 464 sq. ft, Utility 299 sq. ft, WC 24 sq. ft, Hall 201 sq. ft, Porch 252 sq. ft, Enclosed porch 210 sq. ft, Walls: 318 sq. ft

Property summary

2 Floors

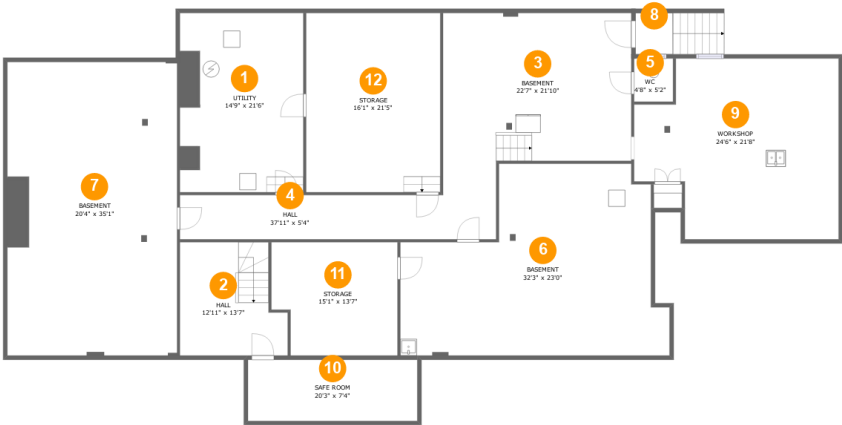
1 Bedrooms

1 Bathrooms

2 Half baths

Home report

313 23rd Street Southwest, South Roanoke, Roanoke, Roanoke city, Virginia, United States, 24014, Lower Level & Entry Level



Room dimensions

Floor 1 Total:1374sqft Excluded: 2297sqft

#		Max Dimensions	sqft	Included
1	Utility	14'9" x 21'6"	294 sq. ft	No
2	Hall	12'11" x 13'7"	156 sq. ft	Yes
3	Basement	22'7" x 21'10"	426 sq. ft	Yes
4	Hall	37'11" x 5'4"	201 sq. ft	No
5	WC	4'8" x 5'2"	24 sq. ft	No
6	Basement	32'3" x 23'0"	586 sq. ft	No
7	Basement	20'4" x 35'1"	693 sq. ft	Yes
8	Outdoor	4'6" x 4'11"	22 sq. ft	No
9	Workshop	24'6" x 21'8"	461 sq. ft	No
10	Safe Room	20'3" x 7'4"	149 sq. ft	No
11	Storage	15'1" x 13'7"	193 sq. ft	No

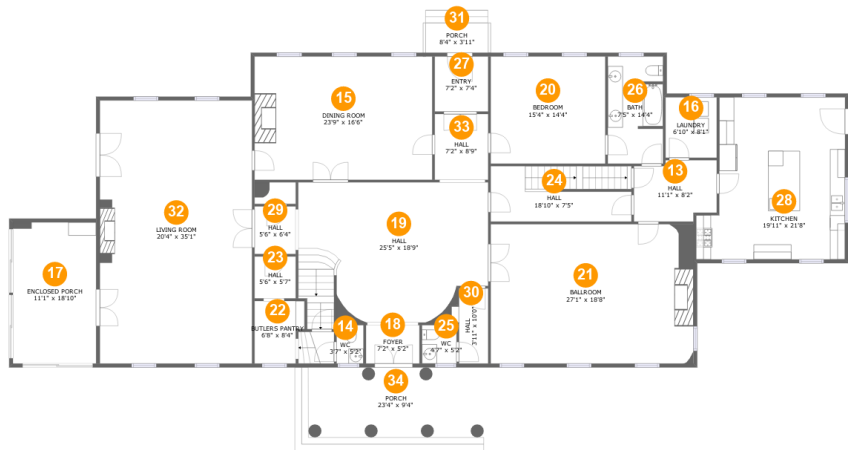
Home report

313 23rd Street Southwest, South Roanoke, Roanoke, Roanoke city, Virginia, United States, 24014, Lower Level & Entry Level

#		Max Dimensions	sqft	Included
12	Storage	16'1" x 21'5"	345 sq. ft	No

Home report

313 23rd Street Southwest, South Roanoke, Roanoke, Roanoke city, Virginia, United States, 24014, Lower Level & Entry Level



Room dimensions

Floor 2 Total:3549sqft Excluded: 462sqft

#		Max Dimensions	sqft	Included
13	Hall	11'1" x 8'2"	84 sq. ft	Yes
14	WC	3'7" x 5'2"	19 sq. ft	Yes
15	Dining Room	23'9" x 16'6"	391 sq. ft	Yes
16	Laundry	6'10" x 8'1"	55 sq. ft	Yes
17	Enclosed Porch	11'1" x 18'10"	210 sq. ft	No
18	Foyer	7'2" x 5'2"	37 sq. ft	Yes
19	Hall	25'5" x 18'9"	450 sq. ft	Yes
20	Bedroom	15'4" x 14'4"	219 sq. ft	Yes
21	Ballroom	27'1" x 18'8"	505 sq. ft	Yes
22	Butlers Pantry	6'8" x 8'4"	51 sq. ft	Yes
23	Hall	5'6" x 5'7"	31 sq. ft	Yes

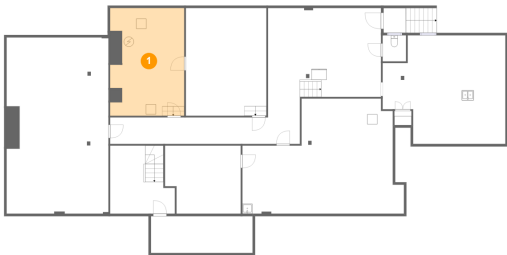
Home report

313 23rd Street Southwest, South Roanoke, Roanoke, Roanoke city, Virginia, United States, 24014, Lower Level & Entry Level

#		Max Dimensions	sqft	Included
24	Hall	18'10" x 7'5"	136 sq. ft	Yes
25	WC	4'7" x 5'2"	24 sq. ft	Yes
26	Bath	7'5" x 14'4"	103 sq. ft	Yes
27	Entry	7'2" x 7'4"	53 sq. ft	Yes
28	Kitchen	19'11" x 21'8"	382 sq. ft	Yes
29	Hall	5'6" x 6'4"	35 sq. ft	Yes
30	Hall	3'11" x 10'0"	41 sq. ft	Yes
31	Porch	8'4" x 3'11"	33 sq. ft	No
32	Living Room	20'4" x 35'1"	715 sq. ft	Yes
33	Hall	7'2" x 8'9"	63 sq. ft	Yes
34	Porch	23'4" x 9'4"	219 sq. ft	No

313 23rd Street Southwest, South Roanoke, Roanoke, Roanoke city, Virginia, United States, 24014, Lower Level & Entry Level

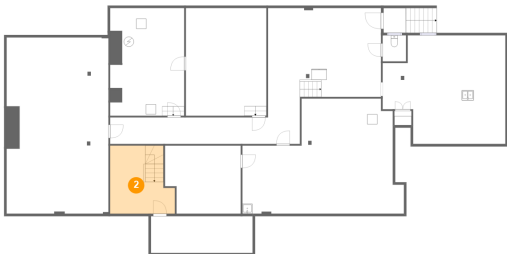
1 Floor 1 - Utility



Max Dimensions: 14'9" x 21'6"
Calculated Area: 294 sq. ft
Included: No

Heated: Yes
Finished: No
Enclosed: Yes
Contiguous: Yes
Permitted: Yes
Wet space: No
Addition: No
Conversion: No

2 Floor 1 - Hall

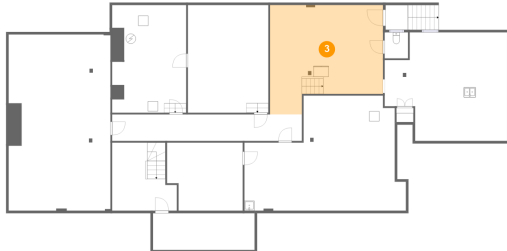


Max Dimensions: 12'11" x 13'7"
Calculated Area: 156 sq. ft
Included: No

Heated: Yes
Finished: Yes
Enclosed: Yes
Contiguous: No
Permitted: Yes
Wet space: No
Addition: No
Conversion: No

313 23rd Street Southwest, South Roanoke, Roanoke, Roanoke city, Virginia, United States, 24014, Lower Level & Entry Level

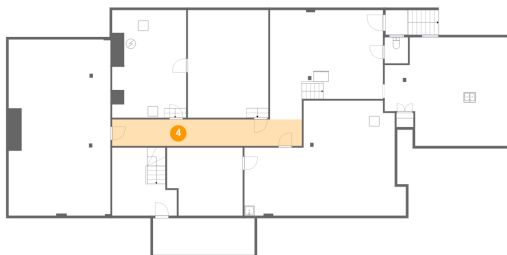
3 Floor 1 - Basement



Max Dimensions: 22'7" x 21'10"
Calculated Area: 426 sq. ft
Included: Yes

Heated: Yes
Finished: Yes
Enclosed: Yes
Contiguous: Yes
Permitted: Yes
Wet space: No
Addition: No
Conversion: No

4 Floor 1 - Hall



Max Dimensions: 37'11" x 5'4"
Calculated Area: 201 sq. ft
Included: No

Heated: Yes
Finished: No
Enclosed: Yes
Contiguous: Yes
Permitted: Yes
Wet space: No
Addition: No
Conversion: No

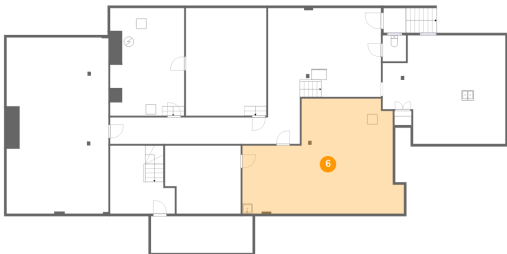
5 Floor 1 - WC



Max Dimensions: 4'8" x 5'2"
Calculated Area: 24 sq. ft
Included: No

Heated: Yes
Finished: No
Enclosed: Yes
Contiguous: Yes
Permitted: Yes
Wet space: Yes
Addition: No
Conversion: No

6 Floor 1 - Basement



Max Dimensions: 32'3" x 23'0"
Calculated Area: 586 sq. ft
Included: No

Heated: Yes
Finished: No
Enclosed: Yes
Contiguous: Yes
Permitted: Yes
Wet space: No
Addition: No
Conversion: No

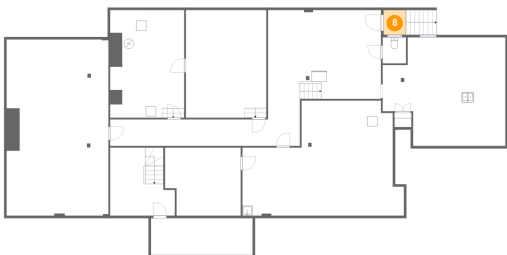
7 Floor 1 - Basement



Max Dimensions: 20'4" x 35'1"
Calculated Area: 693 sq. ft
Included: Yes

Heated: Yes
Finished: Yes
Enclosed: Yes
Contiguous: Yes
Permitted: Yes
Wet space: No
Addition: No
Conversion: No

8 Floor 1 - Outdoor

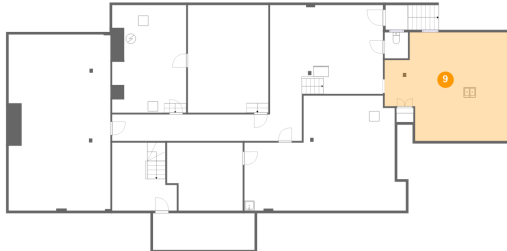


Max Dimensions: 4'6" x 4'11"
Calculated Area: 22 sq. ft
Included: No

Heated: No
Finished: No
Enclosed: No
Contiguous: Yes
Permitted: No
Wet space: No
Addition: No
Conversion: No

313 23rd Street Southwest, South Roanoke, Roanoke, Roanoke city, Virginia, United States, 24014, Lower Level & Entry Level

9 Floor 1 - Workshop



Max Dimensions: 24'6" x 21'8"
Calculated Area: 461 sq. ft
Included: No

Heated: No
Finished: No
Enclosed: Yes
Contiguous: No
Permitted: Yes
Wet space: No
Addition: No
Conversion: No

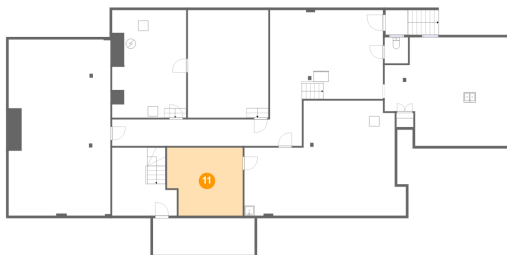
10 Floor 1 - Safe Room



Max Dimensions: 20'3" x 7'4"
Calculated Area: 149 sq. ft
Included: No

Heated: No
Finished: No
Enclosed: No
Contiguous: Yes
Permitted: Yes
Wet space: No
Addition: No
Conversion: No

11 Floor 1 - Storage

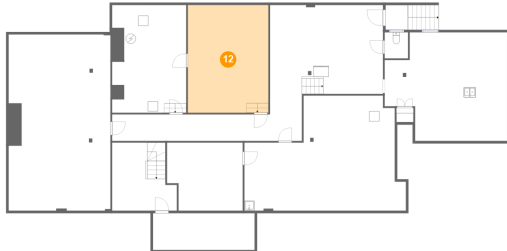


Max Dimensions: 15'1" x 13'7"
Calculated Area: 193 sq. ft
Included: No

Heated: No
Finished: No
Enclosed: No
Contiguous: No
Permitted: Yes
Wet space: No
Addition: No
Conversion: No

313 23rd Street Southwest, South Roanoke, Roanoke, Roanoke city, Virginia, United States, 24014, Lower Level & Entry Level

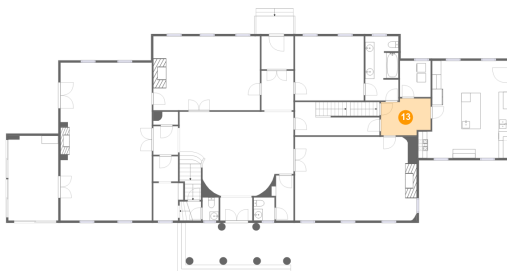
12 Floor 1 - Storage



Max Dimensions: 16'1" x 21'5"
Calculated Area: 345 sq. ft
Included: No

Heated: No
Finished: No
Enclosed: No
Contiguous: No
Permitted: Yes
Wet space: No
Addition: No
Conversion: No

13 Floor 2 - Hall



Max Dimensions: 11'1" x 8'2"
Calculated Area: 84 sq. ft
Included: Yes

Heated: Yes
Finished: Yes
Enclosed: Yes
Contiguous: Yes
Permitted: Yes
Wet space: No
Addition: No
Conversion: No

14 Floor 2 - WC

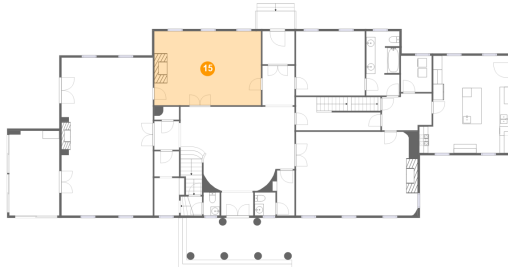


Max Dimensions: 3'7" x 5'2"
Calculated Area: 19 sq. ft
Included: Yes

Heated: Yes
Finished: Yes
Enclosed: Yes
Contiguous: Yes
Permitted: Yes
Wet space: Yes
Addition: No
Conversion: No

313 23rd Street Southwest, South Roanoke, Roanoke, Roanoke city, Virginia, United States, 24014, Lower Level & Entry Level

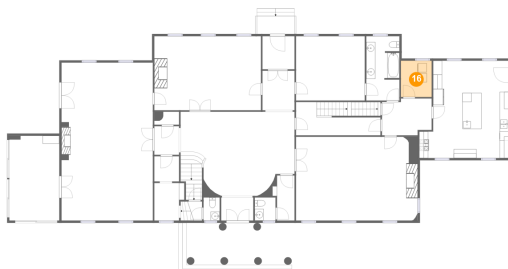
15 Floor 2 - Dining Room



Max Dimensions: 23'9" x 16'6"
Calculated Area: 391 sq. ft
Included: Yes

Heated: Yes
Finished: Yes
Enclosed: Yes
Contiguous: Yes
Permitted: Yes
Wet space: No
Addition: No
Conversion: No

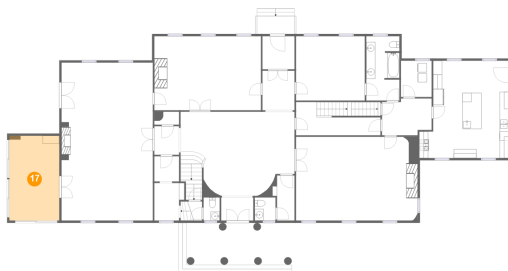
16 Floor 2 - Laundry



Max Dimensions: 6'10" x 8'1"
Calculated Area: 55 sq. ft
Included: Yes

Heated: Yes
Finished: Yes
Enclosed: Yes
Contiguous: Yes
Permitted: Yes
Wet space: No
Addition: No
Conversion: No

17 Floor 2 - Enclosed Porch

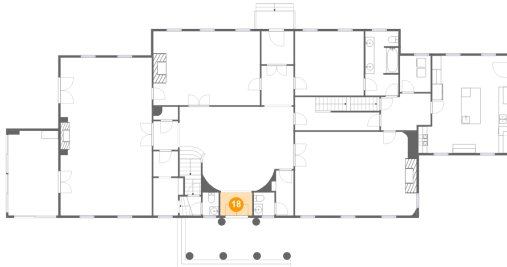


Max Dimensions: 11'1" x 18'10"
Calculated Area: 210 sq. ft
Included: No

Heated: No
Finished: Yes
Enclosed: No
Contiguous: Yes
Permitted: Yes
Wet space: No
Addition: No
Conversion: No

313 23rd Street Southwest, South Roanoke, Roanoke, Roanoke city, Virginia, United States, 24014, Lower Level & Entry Level

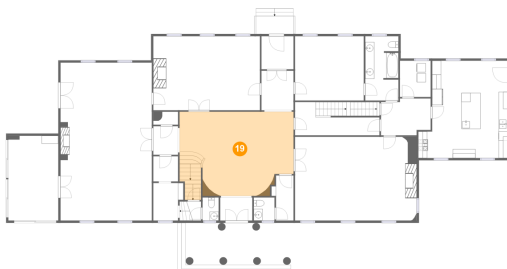
18 Floor 2 - Foyer



Max Dimensions: 7'2" x 5'2"
Calculated Area: 37 sq. ft
Included: Yes

Heated: Yes
Finished: Yes
Enclosed: Yes
Contiguous: Yes
Permitted: Yes
Wet space: No
Addition: No
Conversion: No

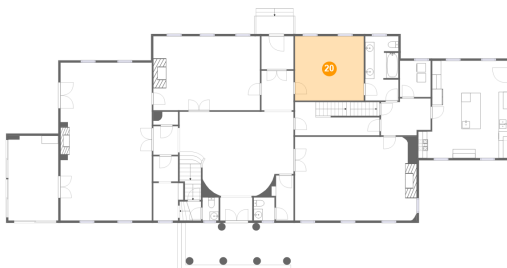
19 Floor 2 - Hall



Max Dimensions: 25'5" x 18'9"
Calculated Area: 450 sq. ft
Included: Yes

Heated: Yes
Finished: Yes
Enclosed: Yes
Contiguous: Yes
Permitted: Yes
Wet space: No
Addition: No
Conversion: No

20 Floor 2 - Bedroom

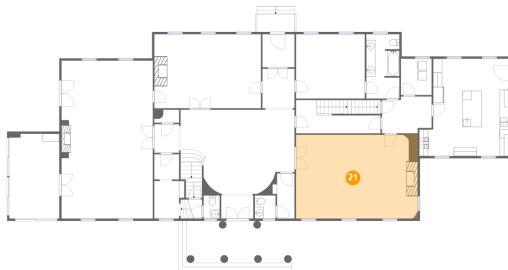


Max Dimensions: 15'4" x 14'4"
Calculated Area: 219 sq. ft
Included: Yes

Heated: Yes
Finished: Yes
Enclosed: Yes
Contiguous: Yes
Permitted: Yes
Wet space: No
Addition: No
Conversion: No

313 23rd Street Southwest, South Roanoke, Roanoke, Roanoke city, Virginia, United States, 24014, Lower Level & Entry Level

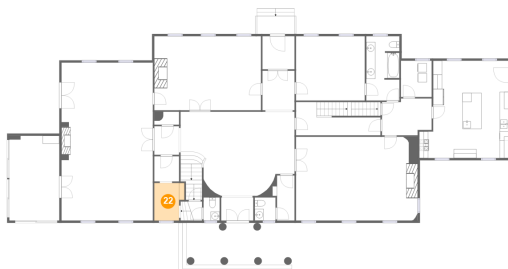
21 Floor 2 - Ballroom



Max Dimensions: 27'1" x 18'8"
Calculated Area: 505 sq. ft
Included: No

Heated: No
Finished: Yes
Enclosed: Yes
Contiguous: Yes
Permitted: Yes
Wet space: No
Addition: No
Conversion: No

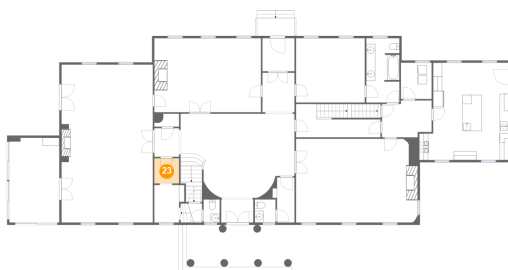
22 Floor 2 - Butlers Pantry



Max Dimensions: 6'8" x 8'4"
Calculated Area: 51 sq. ft
Included: Yes

Heated: Yes
Finished: Yes
Enclosed: Yes
Contiguous: Yes
Permitted: Yes
Wet space: No
Addition: No
Conversion: No

23 Floor 2 - Hall

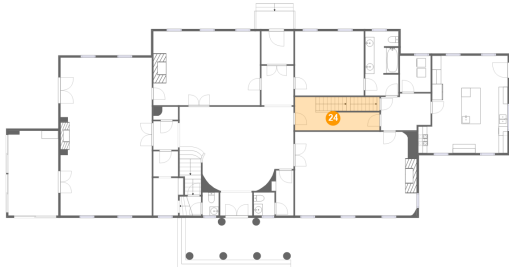


Max Dimensions: 5'6" x 5'7"
Calculated Area: 31 sq. ft
Included: Yes

Heated: Yes
Finished: Yes
Enclosed: Yes
Contiguous: Yes
Permitted: Yes
Wet space: No
Addition: No
Conversion: No

313 23rd Street Southwest, South Roanoke, Roanoke, Roanoke city, Virginia, United States, 24014, Lower Level & Entry Level

24 Floor 2 - Hall



Max Dimensions: 18'10" x 7'5"
Calculated Area: 136 sq. ft
Included: Yes

Heated: Yes
Finished: Yes
Enclosed: Yes
Contiguous: Yes
Permitted: Yes
Wet space: No
Addition: No
Conversion: No

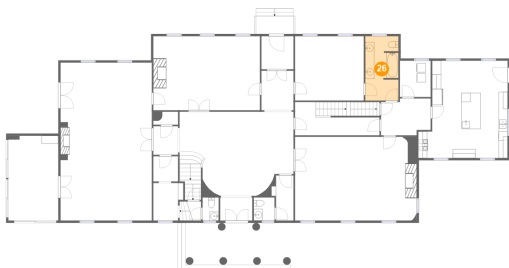
25 Floor 2 - WC



Max Dimensions: 4'7" x 5'2"
Calculated Area: 24 sq. ft
Included: Yes

Heated: Yes
Finished: Yes
Enclosed: Yes
Contiguous: Yes
Permitted: Yes
Wet space: Yes
Addition: No
Conversion: No

26 Floor 2 - Bath



Max Dimensions: 7'5" x 14'4"
Calculated Area: 103 sq. ft
Included: Yes

Heated: Yes
Finished: Yes
Enclosed: Yes
Contiguous: Yes
Permitted: Yes
Wet space: Yes
Addition: No
Conversion: No

313 23rd Street Southwest, South Roanoke, Roanoke, Roanoke city, Virginia, United States, 24014, Lower Level & Entry Level

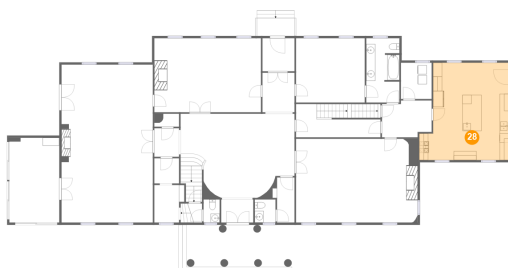
27 Floor 2 - Entry



Max Dimensions: 7'2" x 7'4"
Calculated Area: 53 sq. ft
Included: Yes

Heated: Yes
Finished: Yes
Enclosed: Yes
Contiguous: Yes
Permitted: Yes
Wet space: No
Addition: No
Conversion: No

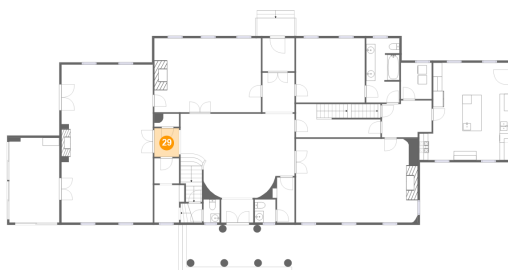
28 Floor 2 - Kitchen



Max Dimensions: 19'11" x 21'8"
Calculated Area: 382 sq. ft
Included: Yes

Heated: Yes
Finished: Yes
Enclosed: Yes
Contiguous: Yes
Permitted: Yes
Wet space: No
Addition: No
Conversion: No

29 Floor 2 - Hall



Max Dimensions: 5'6" x 6'4"
Calculated Area: 35 sq. ft
Included: Yes

Heated: Yes
Finished: Yes
Enclosed: Yes
Contiguous: Yes
Permitted: Yes
Wet space: No
Addition: No
Conversion: No

313 23rd Street Southwest, South Roanoke, Roanoke, Roanoke city, Virginia, United States, 24014, Lower Level & Entry Level

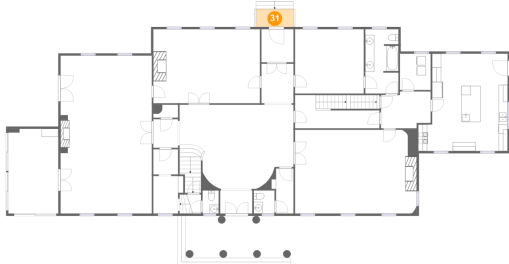
30 Floor 2 - Hall



Max Dimensions: 3'11" x 10'0"
Calculated Area: 41 sq. ft
Included: Yes

Heated: Yes
Finished: Yes
Enclosed: Yes
Contiguous: Yes
Permitted: Yes
Wet space: No
Addition: No
Conversion: No

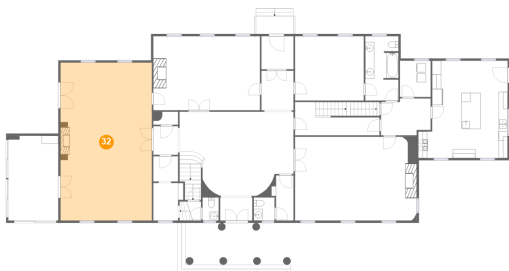
31 Floor 2 - Porch



Max Dimensions: 8'4" x 3'11"
Calculated Area: 33 sq. ft
Included: No

Heated: No
Finished: Yes
Enclosed: No
Contiguous: Yes
Permitted: Yes
Wet space: No
Addition: No
Conversion: No

32 Floor 2 - Living Room

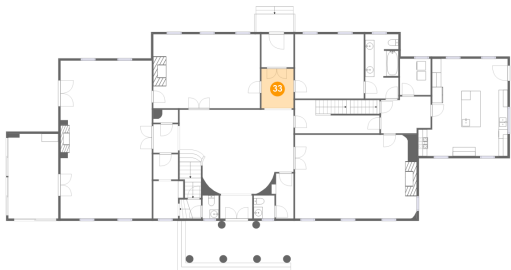


Max Dimensions: 20'4" x 35'1"
Calculated Area: 715 sq. ft
Included: Yes

Heated: Yes
Finished: Yes
Enclosed: Yes
Contiguous: Yes
Permitted: Yes
Wet space: No
Addition: No
Conversion: No

313 23rd Street Southwest, South Roanoke, Roanoke, Roanoke city, Virginia, United States, 24014, Lower Level & Entry Level

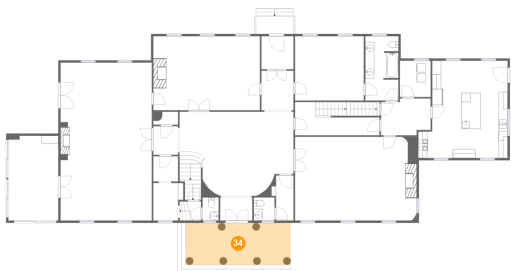
33 Floor 2 - Hall



Max Dimensions: 7'2" x 8'9"
Calculated Area: 63 sq. ft
Included: Yes

Heated: Yes
Finished: Yes
Enclosed: Yes
Contiguous: Yes
Permitted: Yes
Wet space: No
Addition: No
Conversion: No

34 Floor 2 - Porch



Max Dimensions: 23'4" x 9'4"
Calculated Area: 219 sq. ft
Included: No

Heated: No
Finished: Yes
Enclosed: No
Contiguous: Yes
Permitted: Yes
Wet space: No
Addition: No
Conversion: No