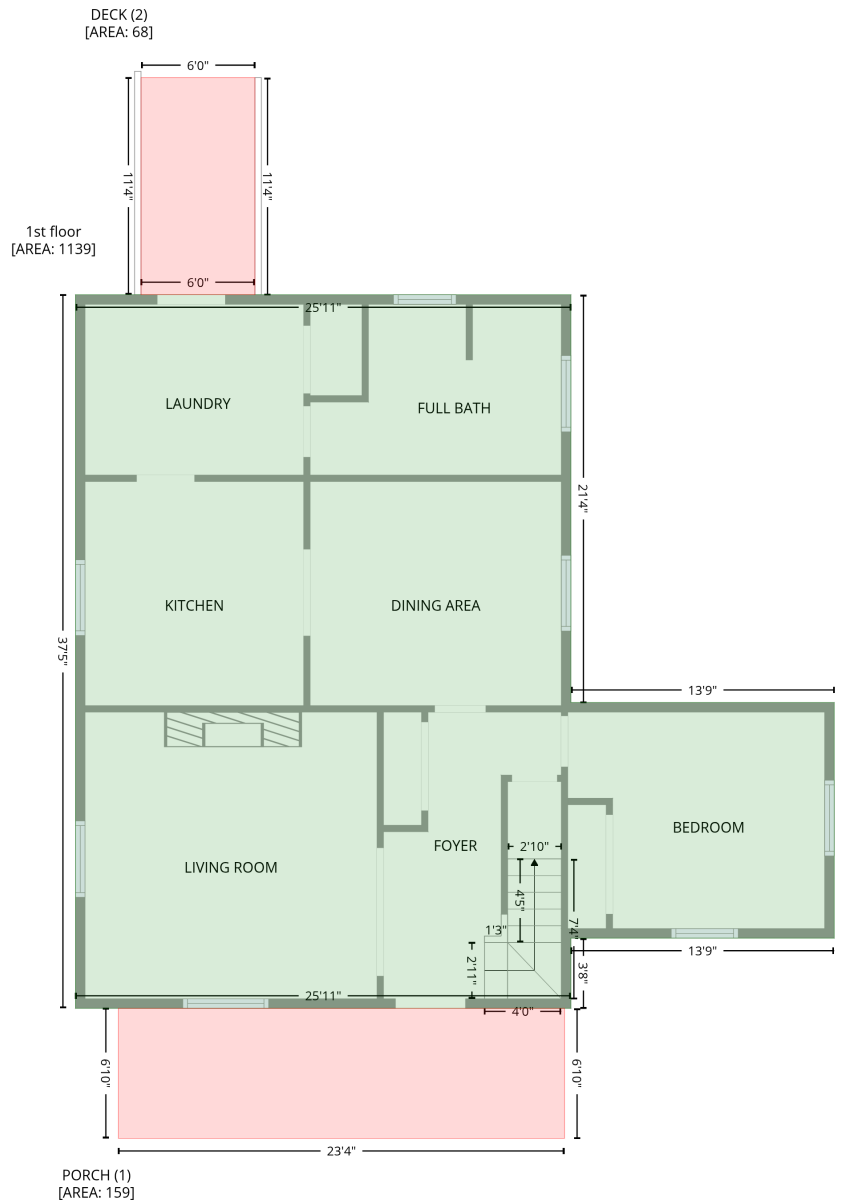


# 1202 Three M Lane, Alton, Halifax County, Virginia, United States, 24520

Gross Living Area: 1554 sq. ft

## Level 1



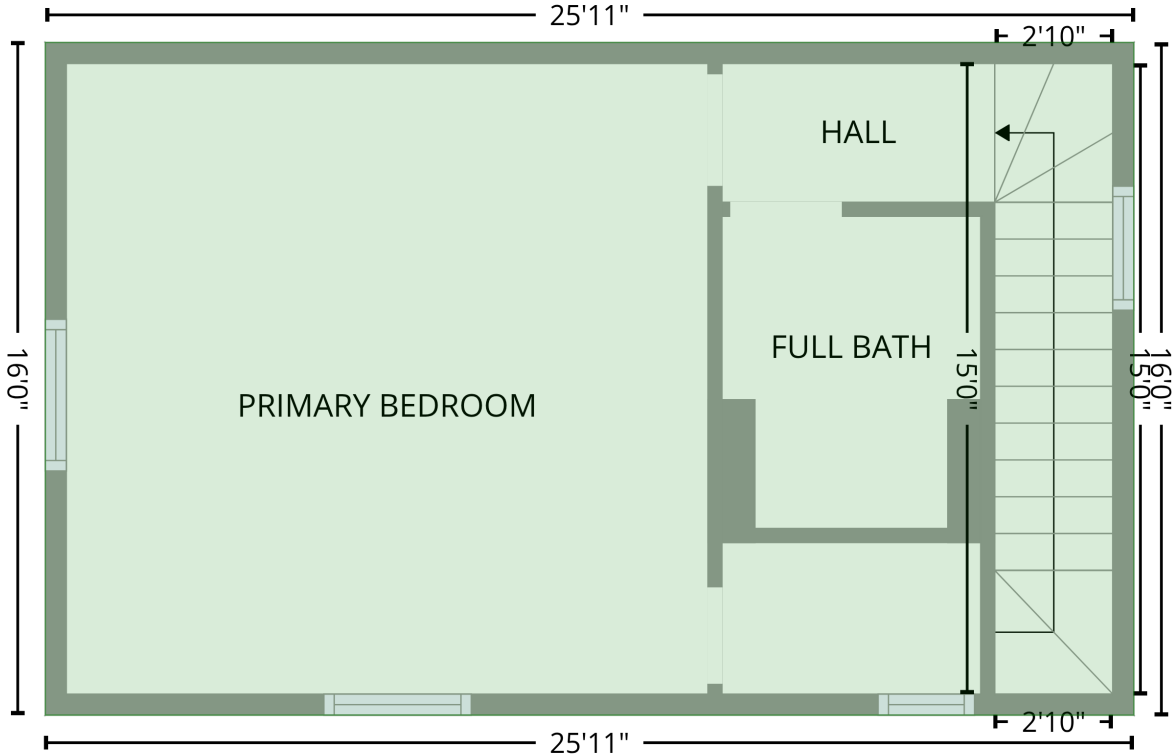
Space	Area (sq. ft)	Calculation
1st floor (Living area)	1139	$-\left((471.8 + 471.8) * (16.6 - 272.9) + (471.8 + 637.2) * (272.9 - 272.9) + (637.2 + 637.2) * (272.9 - 421) + (637.2 + 471.8) * (421 - 421) + (471.8 + 471.8) * (421 - 465.1) + (471.8 + 160.7) * (465.1 - 465.1) + (160.7 + 160.7) * (465.1 - 16.6) + (160.7 + 471.8) * (16.6 - 16.6)\right) * 0.5 * 0.00694$
PORCH (Non-living area)	159	$-\left((467.8 + 467.8) * (465.1 - 546.9) + (467.8 + 187.7) * (546.9 - 546.9) + (187.7 + 187.7) * (546.9 - 465.1) + (187.7 + 467.8) * (465.1 - 465.1)\right) * 0.5 * 0.00694$
DECK (Non-living area)	68	$-\left((273.4 + 273.4) * (-119.8 - 16.6) + (273.4 + 201.9) * (16.6 - 16.6) + (201.9 + 201.9) * (16.6 - -119.8) + (201.9 + 273.4) * (-119.8 - -119.8)\right) * 0.5 * 0.00694$

# 1202 Three M Lane, Alton, Halifax County, Virginia, United States, 24520

Gross Living Area: 1554 sq. ft

## Level 2

2nd floor  
[AREA: 415]



Space	Area (sq. ft)	Calculation <small>Coordinate Polygon Area Algorithm using inches</small>
2nd floor (Living area)	415	$-((471.8 + 471.8) * (272.9 - 465.1) + (471.8 + 160.7) * (465.1 - 465.1) + (160.7 + 160.7) * (465.1 - 272.9) + (160.7 + 471.8) * (272.9 - 272.9)) * 0.5 * 0.00694$