

Basement
26'8" x 35'4"

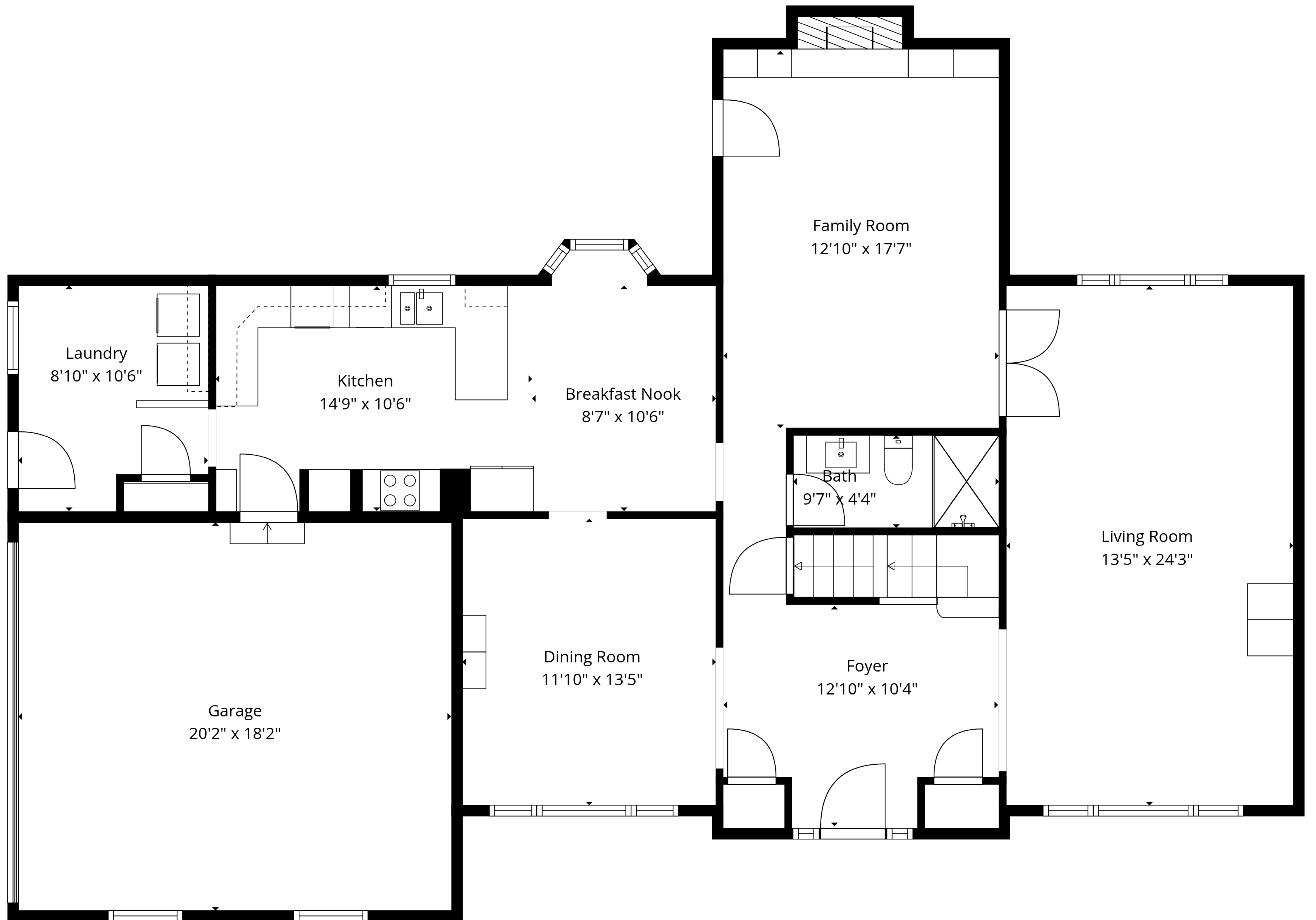
TOTAL: 3052 sq. ft

Basement: 789 sq. ft, 1st floor: 1321 sq. ft, 2nd floor: 942 sq. ft
EXCLUDED AREAS: LOW CEILING: 295 sq. ft, GARAGE: 367 sq. ft, BAY WINDOW: 7 sq. ft,
FIREPLACE: 9 sq. ft, WALLS: 254 sq. ft



Floor Plans Are Intended To Give a General Indication Of The Property Layout. Sizes And Dimensions Are Estimate, Actual May Vary.





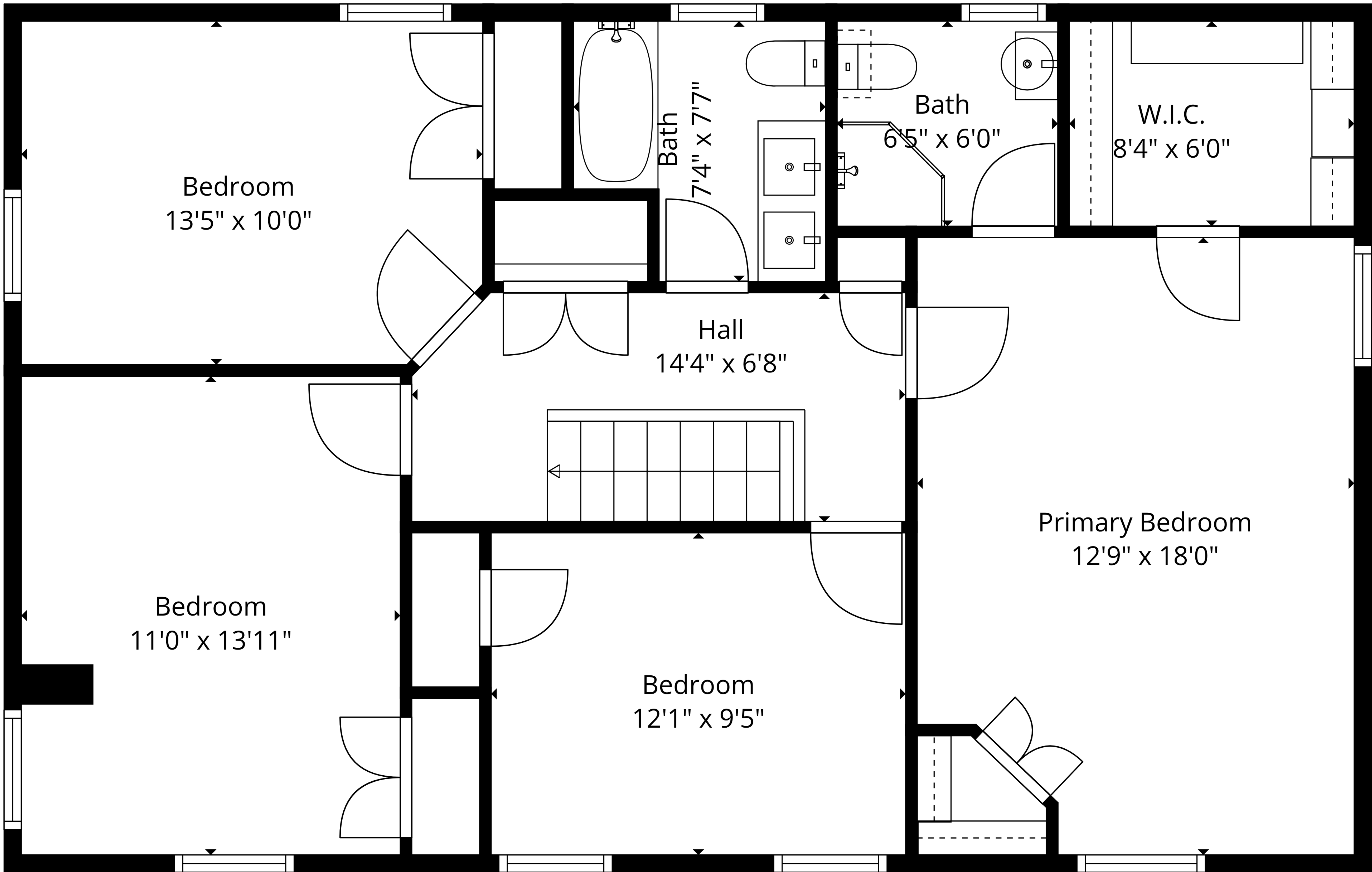
TOTAL: 3052 sq. ft

Basement: 789 sq. ft, 1st floor: 1321 sq. ft, 2nd floor: 942 sq. ft
 EXCLUDED AREAS: LOW CEILING: 295 sq. ft, GARAGE: 367 sq. ft, BAY WINDOW: 7 sq. ft,
 FIREPLACE: 9 sq. ft, WALLS: 254 sq. ft



Floor Plans Are Intended To Give a General Indication Of The Property Layout. Sizes And Dimensions Are Estimate, Actual May Vary.





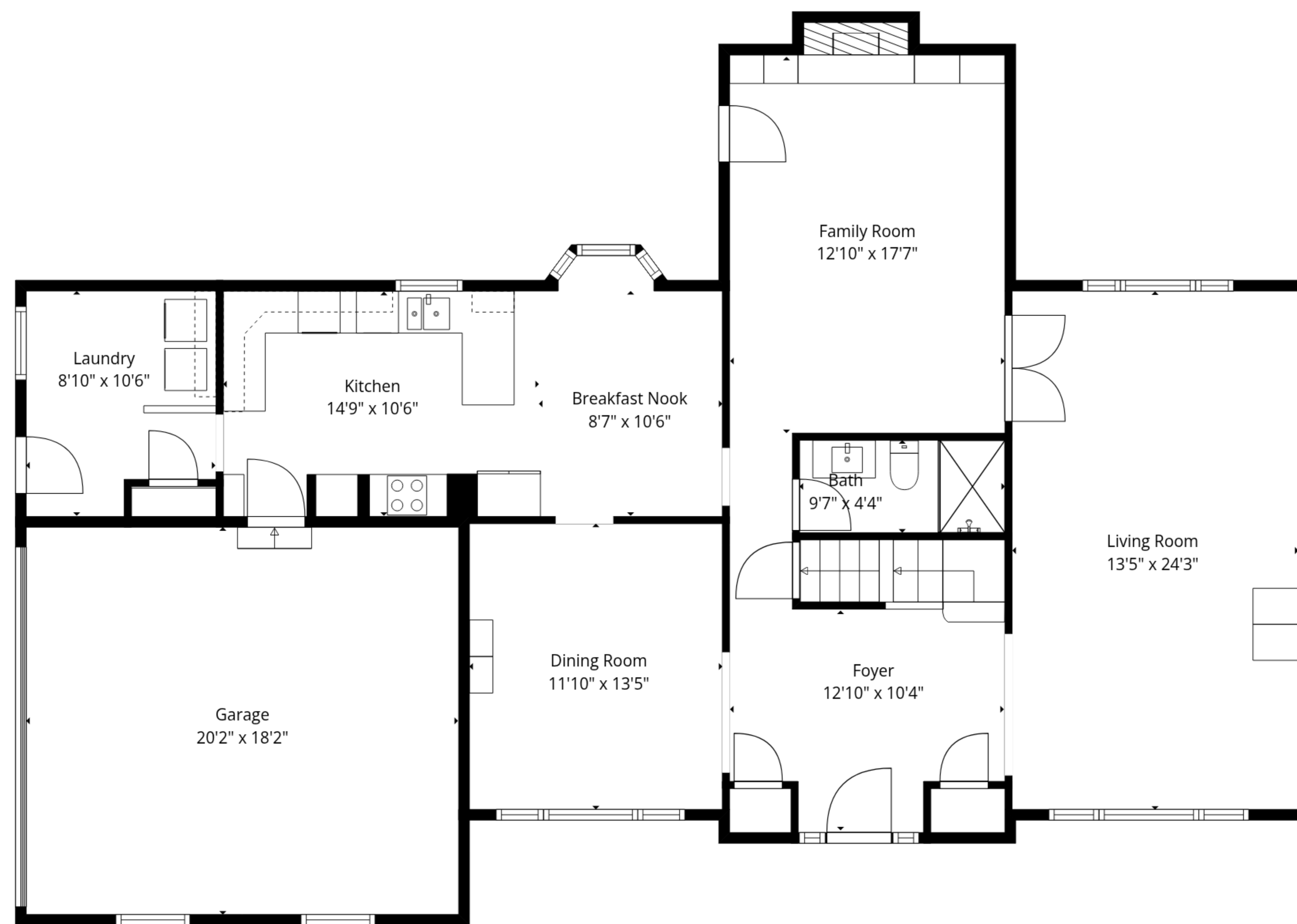
TOTAL: 3052 sq. ft

Basement: 789 sq. ft, 1st floor: 1321 sq. ft, 2nd floor: 942 sq. ft
 EXCLUDED AREAS: LOW CEILING: 295 sq. ft, GARAGE: 367 sq. ft, BAY WINDOW: 7 sq. ft,
 FIREPLACE: 9 sq. ft, WALLS: 254 sq. ft

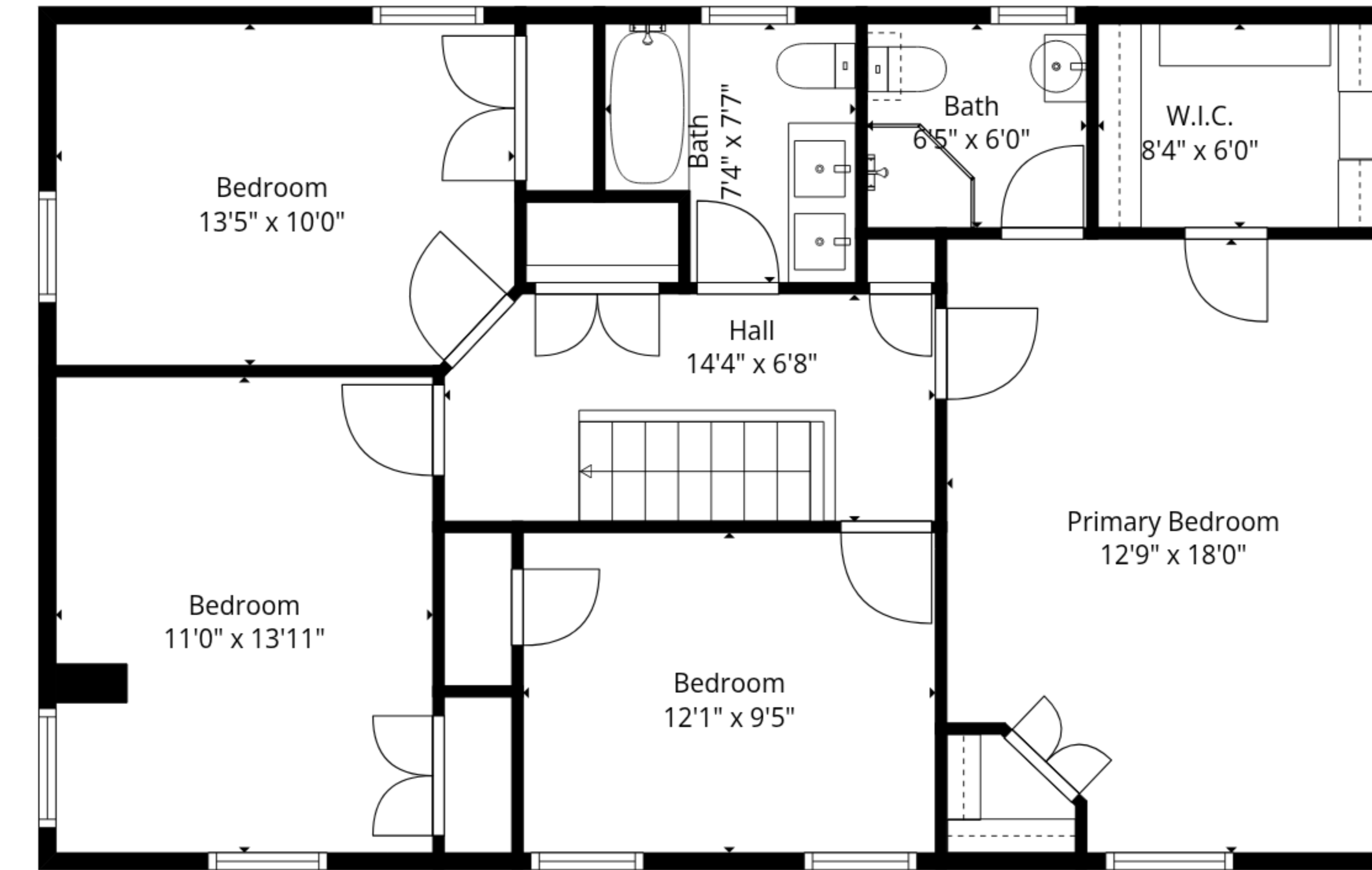


Floor Plans Are Intended To Give a General Indication Of The Property Layout. Sizes And Dimensions Are Estimate, Actual May Vary.

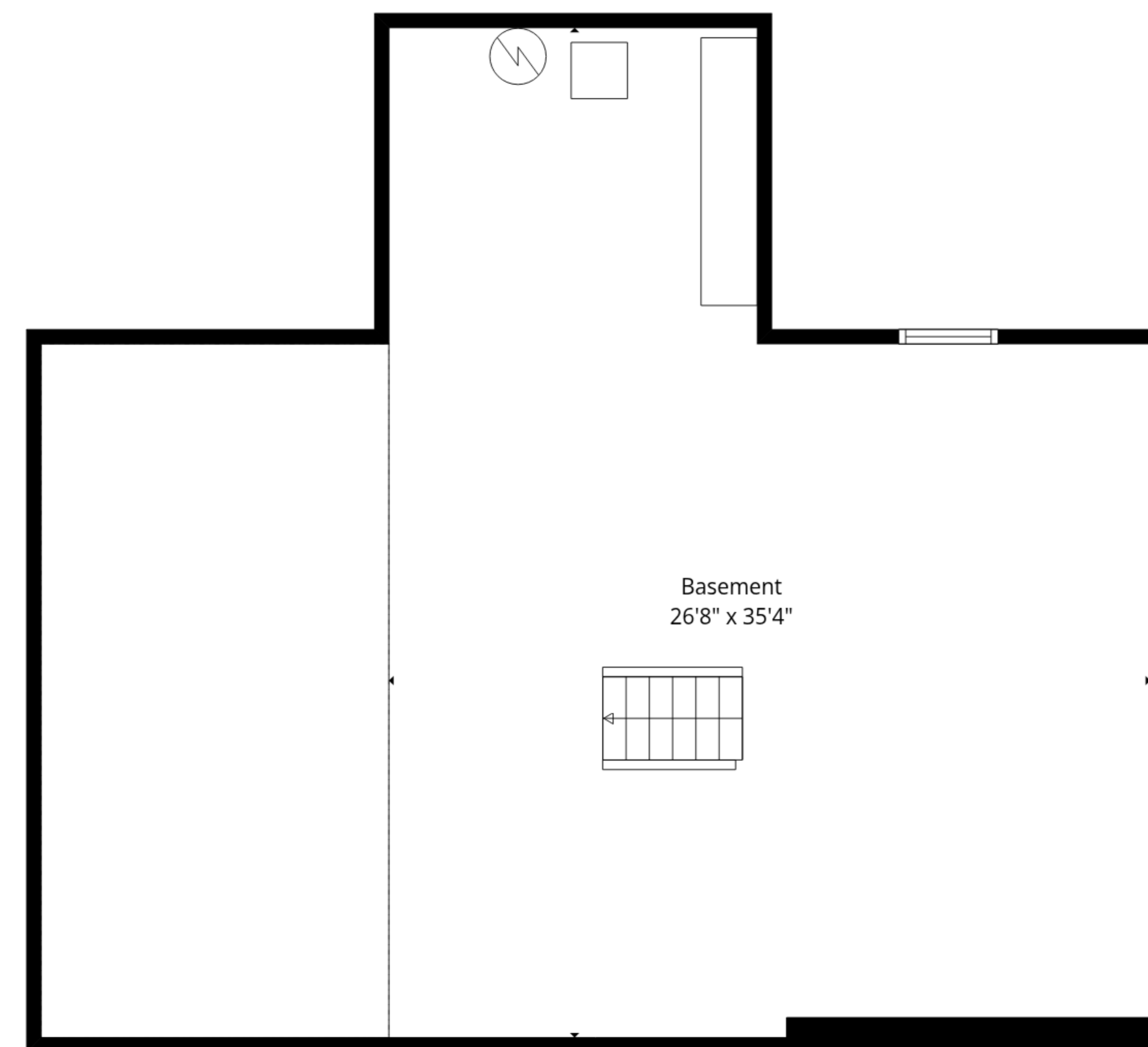




1st Floor



2nd Floor



Basement

TOTAL: 3052 sq. ft

Basement: 789 sq. ft, 1st floor: 1321 sq. ft, 2nd floor: 942 sq. ft

EXCLUDED AREAS: LOW CEILING: 295 sq. ft, GARAGE: 367 sq. ft, BAY WINDOW: 7 sq. ft, FIREPLACE: 9 sq. ft, WALLS: 254 sq. ft



Floor Plans Are Intended To Give a General Indication Of The Property Layout. Sizes And Dimensions Are Estimate, Actual May Vary.

