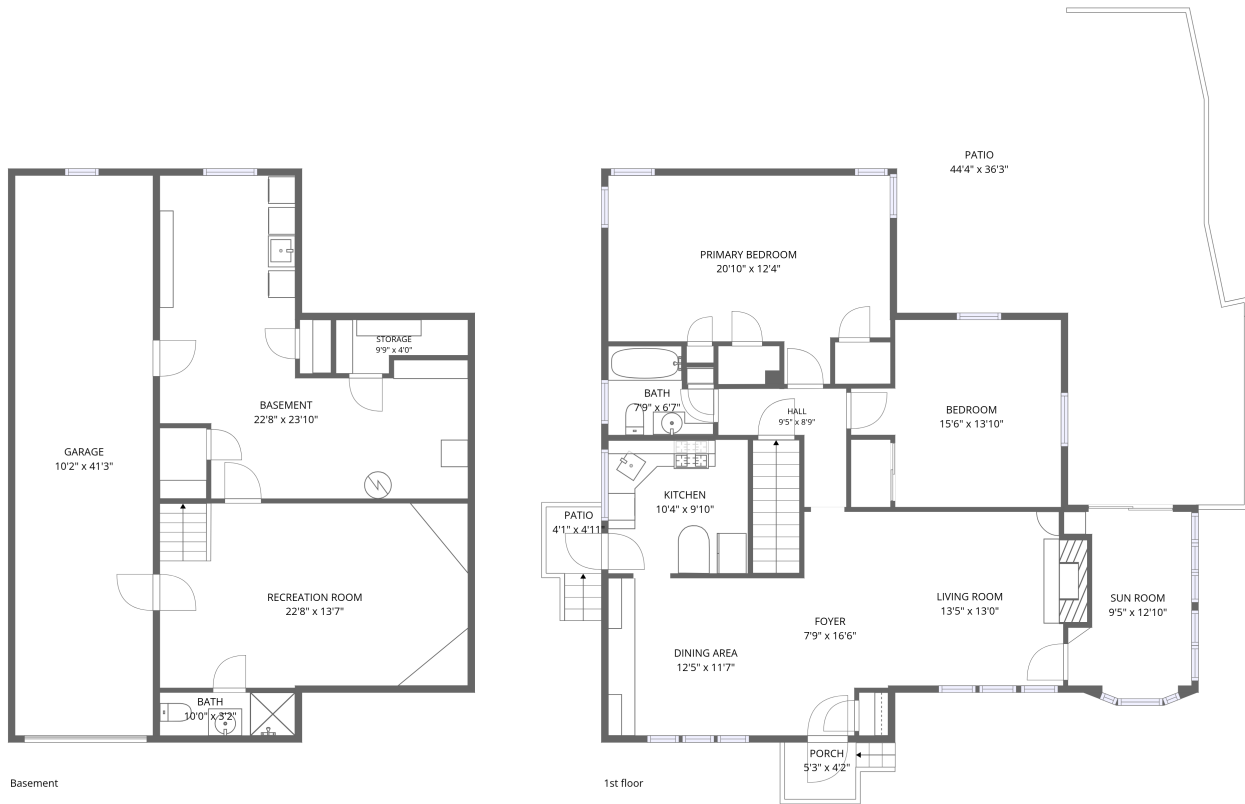


Home data report

401 Neulon Ave, Pittsburgh, PA, US




Total Area: 1702 sq. ft

Basement: 383 sq. ft, 1st Floor: 1319 sq. ft

Excluded: Garage 419 sq. ft, Basement 341 sq. ft, Storage 31 sq. ft, Porch 27 sq. ft, Patio 1039 sq. ft, Embedded window 6 sq. ft, Walls: 180 sq. ft

Property summary

 **2** Floors

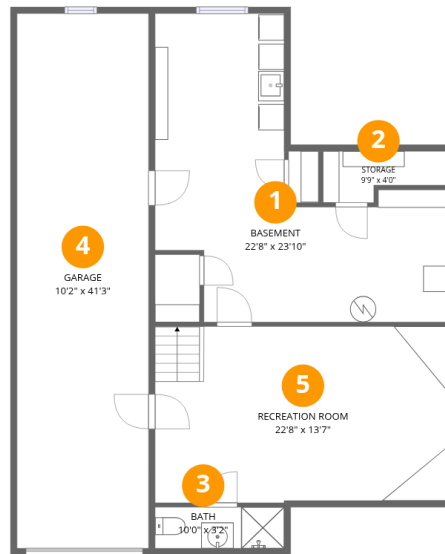
 **2** Bedrooms

 **2** Bathrooms

 **1** Garages

Home data report

401 Neulon Ave, Pittsburgh, PA, US



Room dimensions

Floor 1 Below grade

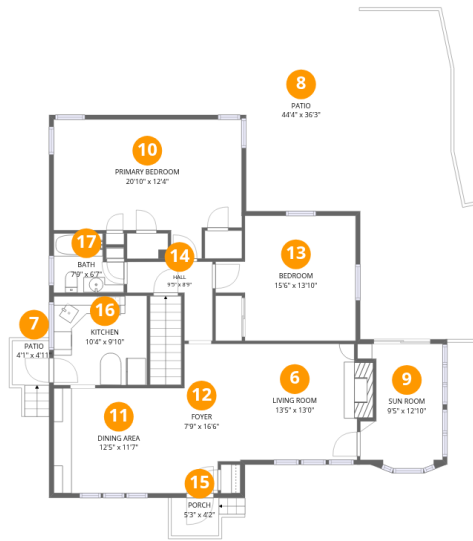
Total:383sqft

Excluded: 791sqft

#		Dimensions	sqft	Counted as living area
1	Basement	22'8" x 23'10"	337 sq. ft	No
2	Storage	9'9" x 4'0"	31 sq. ft	No
3	Bath	10'0" x 3'2"	32 sq. ft	Yes
4	Garage	10'2" x 41'3"	419 sq. ft	No
5	Recreation Room	22'8" x 13'7"	307 sq. ft	Yes

Home data report

401 Neulon Ave,Pittsburgh,PA,US



Room dimensions

Floor 2

Total:1319sqft

Excluded: 1072sqft

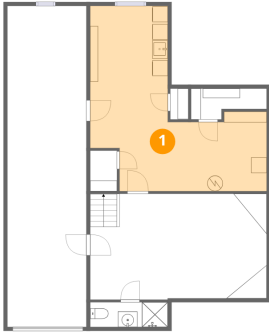
#		Dimensions	sqft	Counted as living area
6	Living Room	13'5" x 13'0"	182 sq. ft	Yes
7	Patio	4'1" x 4'11"	29 sq. ft	No
8	Patio	44'4" x 36'3"	1010 sq. ft	No
9	Sun Room	9'5" x 12'10"	105 sq. ft	Yes
10	Primary Bedroom	20'10" x 12'4"	263 sq. ft	Yes
11	Dining Area	12'5" x 11'7"	144 sq. ft	Yes
12	Foyer	7'9" x 16'6"	111 sq. ft	Yes
13	Bedroom	15'6" x 13'10"	180 sq. ft	Yes
14	Hall	9'5" x 8'9"	49 sq. ft	Yes
15	Porch	5'3" x 4'2"	27 sq. ft	No
16	Kitchen	10'4" x 9'10"	102 sq. ft	Yes

Home data report

401 Neulon Ave,Pittsburgh,PA,US

#		Dimensions	sqft	Counted as living area
17	Bath	7'9" x 6'7"	44 sq. ft	Yes

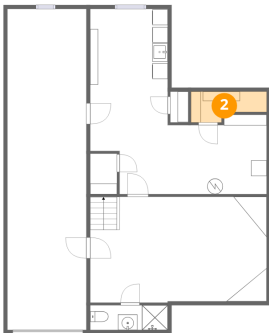
1 Floor 1 - Basement



Dimensions: 22'8" x 23'10"
Area: 337 sq. ft
Counted as living area: No

Heated: Yes
Finished: No
Enclosed: Yes
Contiguous: Yes
Permitted: Yes
Wet space: No
Addition: No
Conversion: No

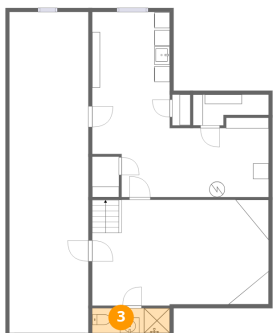
2 Floor 1 - Storage



Dimensions: 9'9" x 4'0"
Area: 31 sq. ft
Counted as living area: No

Heated: No
Finished: No
Enclosed: No
Contiguous: Yes
Permitted: Yes
Wet space: No
Addition: No
Conversion: No

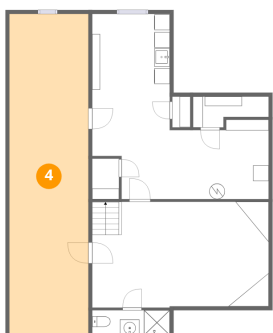
3 Floor 1 - Bath



Dimensions: 10'0" x 3'2"
Area: 32 sq. ft
Counted as living area: Yes

Heated: Yes
Finished: Yes
Enclosed: Yes
Contiguous: Yes
Permitted: Yes
Wet space: Yes
Addition: No
Conversion: No

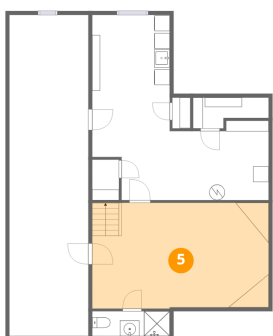
4 Floor 1 - Garage



Dimensions: 10'2" x 41'3"
Area: 419 sq. ft
Counted as living area: No

Heated: No
Finished: No
Enclosed: Yes
Contiguous: Yes
Permitted: Yes
Wet space: No
Addition: No
Conversion: No

5 Floor 1 - Recreation Room



Dimensions: 22'8" x 13'7"
Area: 307 sq. ft
Counted as living area: Yes

Heated: Yes
Finished: Yes
Enclosed: Yes
Contiguous: Yes
Permitted: Yes
Wet space: No
Addition: No
Conversion: No

6 Floor 2 - Living Room



Dimensions: 13'5" x 13'0"
Area: 182 sq. ft
Counted as living area: Yes

Heated: Yes
Finished: Yes
Enclosed: Yes
Contiguous: Yes
Permitted: Yes
Wet space: No
Addition: No
Conversion: No

7 Floor 2 - Patio



Dimensions: 4'1" x 4'11"
Area: 29 sq. ft
Counted as living area: No

Heated: No
Finished: No
Enclosed: No
Contiguous: Yes
Permitted: Yes
Wet space: No
Addition: No
Conversion: No

8 Floor 2 - Patio



Dimensions: 44'4" x 36'3"
Area: 1010 sq. ft
Counted as living area: No

Heated: No
Finished: No
Enclosed: No
Contiguous: Yes
Permitted: Yes
Wet space: No
Addition: No
Conversion: No

9 Floor 2 - Sun Room



Dimensions: 9'5" x 12'10"
Area: 105 sq. ft
Counted as living area: Yes

Heated: Yes
Finished: Yes
Enclosed: Yes
Contiguous: Yes
Permitted: Yes
Wet space: No
Addition: No
Conversion: No

10 Floor 2 - Primary Bedroom



Dimensions: 20'10" x 12'4"
Area: 263 sq. ft
Counted as living area: Yes

Heated: Yes
Finished: Yes
Enclosed: Yes
Contiguous: Yes
Permitted: Yes
Wet space: No
Addition: No
Conversion: No

11 Floor 2 - Dining Area



Dimensions: 12'5" x 11'7"
Area: 144 sq. ft
Counted as living area: Yes

Heated: Yes
Finished: Yes
Enclosed: Yes
Contiguous: Yes
Permitted: Yes
Wet space: No
Addition: No
Conversion: No

12 Floor 2 - Foyer



Dimensions: 7'9" x 16'6"
Area: 111 sq. ft
Counted as living area: Yes

Heated: Yes
Finished: Yes
Enclosed: Yes
Contiguous: Yes
Permitted: Yes
Wet space: No
Addition: No
Conversion: No

13 Floor 2 - Bedroom



Dimensions: 15'6" x 13'10"
Area: 180 sq. ft
Counted as living area: Yes

Heated: Yes
Finished: Yes
Enclosed: Yes
Contiguous: Yes
Permitted: Yes
Wet space: No
Addition: No
Conversion: No

14 Floor 2 - Hall



Dimensions: 9'5" x 8'9"
Area: 49 sq. ft
Counted as living area: Yes

Heated: Yes
Finished: Yes
Enclosed: Yes
Contiguous: Yes
Permitted: Yes
Wet space: No
Addition: No
Conversion: No

15 Floor 2 - Porch



Dimensions: 5'3" x 4'2"
Area: 27 sq. ft
Counted as living area: No

Heated: No
Finished: No
Enclosed: No
Contiguous: Yes
Permitted: Yes
Wet space: No
Addition: No
Conversion: No

16 Floor 2 - Kitchen



Dimensions: 10'4" x 9'10"
Area: 102 sq. ft
Counted as living area: Yes

Heated: Yes
Finished: Yes
Enclosed: Yes
Contiguous: Yes
Permitted: Yes
Wet space: No
Addition: No
Conversion: No

17 Floor 2 - Bath



Dimensions: 7'9" x 6'7"
Area: 44 sq. ft
Counted as living area: Yes

Heated: Yes
Finished: Yes
Enclosed: Yes
Contiguous: Yes
Permitted: Yes
Wet space: Yes
Addition: No
Conversion: No