

Home data report

**3859 Brunner Blvd, Johnstown, CO, US**



**Total Area: 3081 sq. ft**

Basement: 0 sq. ft, 1st Floor: 1567 sq. ft, 2nd Floor: 1514 sq. ft

Excluded: Basement 1516 sq. ft, Garage 608 sq. ft, Deck 817 sq. ft, Fireplace 15 sq. ft, Open to below 320 sq. ft, Walls: 301 sq. ft

## Property summary

 **3** Floors

 **5** Bedrooms

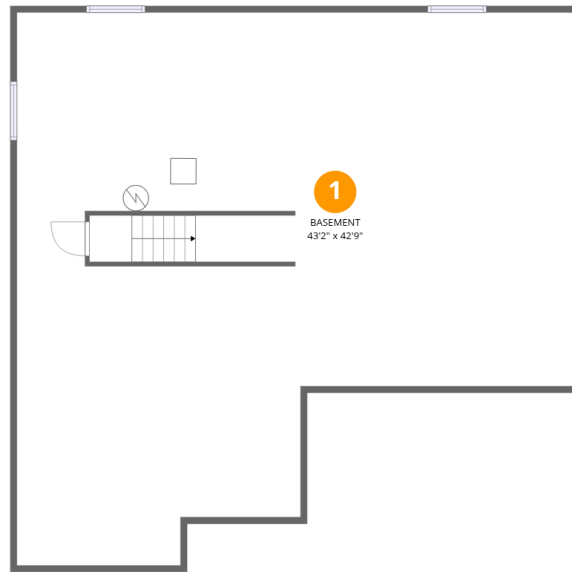
 **3** Bathrooms

Home data report

# 3859 Brunner Blvd,Johnstown,CO,US

 **1**  
Half baths

 **1**  
Garages



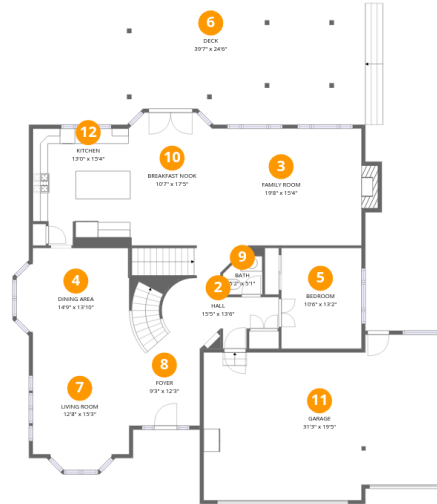
## Room dimensions

Floor 1 Below grade

Total:0sqft

Excluded: 1516sqft

#		Dimensions	sqft	Counted as living area
1	Basement	43'2" x 42'9"	1845 sq. ft	No



## Room dimensions

Floor 2

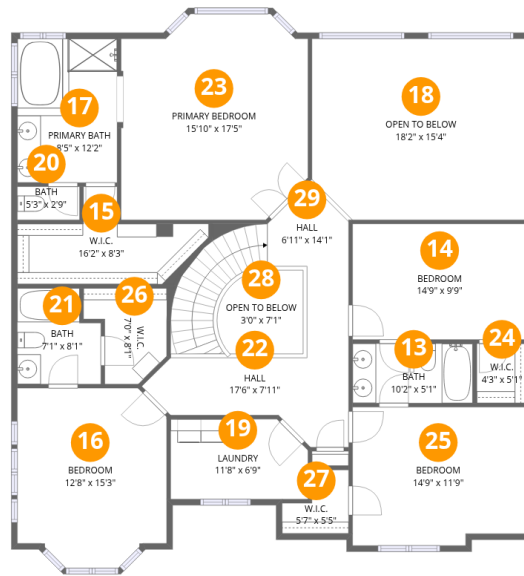
Total:1567sqft

Excluded: 1440sqft

#		Dimensions	sqft	Counted as living area
2	Hall	15'5" x 13'6"	208 sq. ft	Yes
3	Family Room	19'8" x 15'4"	301 sq. ft	Yes
4	Dining Area	14'9" x 13'10"	205 sq. ft	Yes
5	Bedroom	10'6" x 13'2"	139 sq. ft	Yes
6	Deck	39'7" x 24'6"	968 sq. ft	No
7	Living Room	12'8" x 15'3"	194 sq. ft	Yes
8	Foyer	9'3" x 12'3"	113 sq. ft	Yes
9	Bath	5'2" x 5'1"	26 sq. ft	Yes
10	Breakfast Nook	10'7" x 17'5"	184 sq. ft	Yes
11	Garage	31'3" x 19'5"	606 sq. ft	No
12	Kitchen	13'0" x 15'4"	199 sq. ft	Yes

# Home data report

## 3859 Brunner Blvd, Johnstown, CO, US



### Room dimensions

Floor 3

Total: 1514 sqft

Excluded: 320 sqft

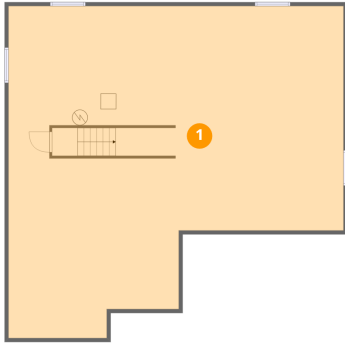
#		Dimensions	sqft	Counted as living area
13	Bath	10'2" x 5'1"	51 sq. ft	Yes
14	Bedroom	14'9" x 9'9"	144 sq. ft	Yes
15	W.I.C.	16'2" x 8'3"	134 sq. ft	Yes
16	Bedroom	12'8" x 15'3"	193 sq. ft	Yes
17	Primary Bath	8'5" x 12'2"	102 sq. ft	Yes
18	Open To Below	18'2" x 15'4"	279 sq. ft	No
19	Laundry	11'8" x 6'9"	79 sq. ft	Yes
20	Bath	5'3" x 2'9"	15 sq. ft	Yes
21	Bath	7'1" x 8'1"	57 sq. ft	Yes
22	Hall	17'6" x 7'11"	138 sq. ft	Yes
23	Primary Bedroom	15'10" x 17'5"	275 sq. ft	Yes

Home data report

**3859 Brunner Blvd,Johnstown,CO,US**

#		Dimensions	sqft	Counted as living area
24	W.I.C.	4'3" x 5'1"	21 sq. ft	Yes
25	Bedroom	14'9" x 11'9"	173 sq. ft	Yes
26	W.I.C.	7'0" x 8'1"	57 sq. ft	Yes
27	W.I.C.	5'7" x 5'5"	30 sq. ft	Yes
28	Open To Below	3'0" x 7'1"	21 sq. ft	No
29	Hall	6'11" x 14'1"	97 sq. ft	Yes

## 1 Floor 1 - Basement



Dimensions: 43'2" x 42'9"  
Area: 1845 sq. ft  
Counted as living area: No

Heated: Yes  
Finished: No  
Enclosed: Yes  
Contiguous: Yes  
Permitted: Yes  
Wet space: No  
Addition: No  
Conversion: No

## 2 Floor 2 - Hall



Dimensions: 15'5" x 13'6"  
Area: 208 sq. ft  
Counted as living area: Yes

Heated: Yes  
Finished: Yes  
Enclosed: Yes  
Contiguous: Yes  
Permitted: Yes  
Wet space: No  
Addition: No  
Conversion: No

### 3 Floor 2 - Family Room

---



Dimensions: 19'8" x 15'4"  
Area: 301 sq. ft  
Counted as living area: Yes

Heated: Yes  
Finished: Yes  
Enclosed: Yes  
Contiguous: Yes  
Permitted: Yes  
Wet space: No  
Addition: No  
Conversion: No

### 4 Floor 2 - Dining Area

---



Dimensions: 14'9" x 13'10"  
Area: 205 sq. ft  
Counted as living area: Yes

Heated: Yes  
Finished: Yes  
Enclosed: Yes  
Contiguous: Yes  
Permitted: Yes  
Wet space: No  
Addition: No  
Conversion: No

### 5 Floor 2 - Bedroom

---



Dimensions: 10'6" x 13'2"  
Area: 139 sq. ft  
Counted as living area: Yes

Heated: Yes  
Finished: Yes  
Enclosed: Yes  
Contiguous: Yes  
Permitted: Yes  
Wet space: No  
Addition: No  
Conversion: No

## 6 Floor 2 - Deck



Dimensions: 39'7" x 24'6"  
Area: 968 sq. ft  
Counted as living area: No

Heated: No  
Finished: No  
Enclosed: No  
Contiguous: Yes  
Permitted: Yes  
Wet space: No  
Addition: No  
Conversion: No

## 7 Floor 2 - Living Room



Dimensions: 12'8" x 15'3"  
Area: 194 sq. ft  
Counted as living area: Yes

Heated: Yes  
Finished: Yes  
Enclosed: Yes  
Contiguous: Yes  
Permitted: Yes  
Wet space: No  
Addition: No  
Conversion: No

## 8 Floor 2 - Foyer



Dimensions: 9'3" x 12'3"  
Area: 113 sq. ft  
Counted as living area: Yes

Heated: Yes  
Finished: Yes  
Enclosed: Yes  
Contiguous: Yes  
Permitted: Yes  
Wet space: No  
Addition: No  
Conversion: No

## 9 Floor 2 - Bath



Dimensions: 5'2" x 5'1"  
Area: 26 sq. ft  
Counted as living area: Yes

Heated: Yes  
Finished: Yes  
Enclosed: Yes  
Contiguous: Yes  
Permitted: Yes  
Wet space: Yes  
Addition: No  
Conversion: No

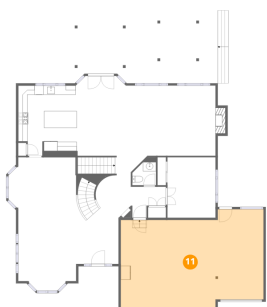
## 10 Floor 2 - Breakfast Nook



Dimensions: 10'7" x 17'5"  
Area: 184 sq. ft  
Counted as living area: Yes

Heated: Yes  
Finished: Yes  
Enclosed: Yes  
Contiguous: Yes  
Permitted: Yes  
Wet space: No  
Addition: No  
Conversion: No

## 11 Floor 2 - Garage



Dimensions: 31'3" x 19'5"  
Area: 606 sq. ft  
Counted as living area: No

Heated: No  
Finished: No  
Enclosed: Yes  
Contiguous: Yes  
Permitted: Yes  
Wet space: No  
Addition: No  
Conversion: No

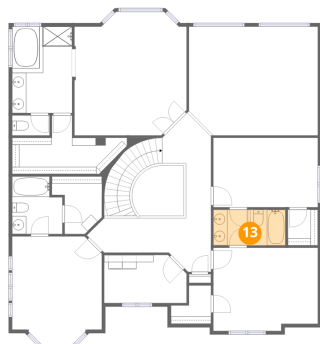
## 12 Floor 2 - Kitchen



Dimensions: 13'0" x 15'4"  
Area: 199 sq. ft  
Counted as living area: Yes

Heated: Yes  
Finished: Yes  
Enclosed: Yes  
Contiguous: Yes  
Permitted: Yes  
Wet space: No  
Addition: No  
Conversion: No

## 13 Floor 3 - Bath



Dimensions: 10'2" x 5'1"  
Area: 51 sq. ft  
Counted as living area: Yes

Heated: Yes  
Finished: Yes  
Enclosed: Yes  
Contiguous: Yes  
Permitted: Yes  
Wet space: Yes  
Addition: No  
Conversion: No

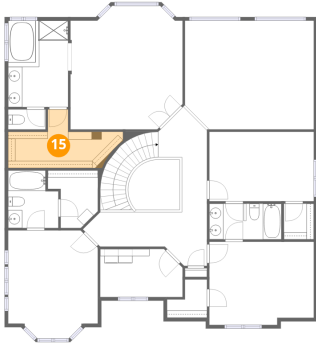
## 14 Floor 3 - Bedroom



Dimensions: 14'9" x 9'9"  
Area: 144 sq. ft  
Counted as living area: Yes

Heated: Yes  
Finished: Yes  
Enclosed: Yes  
Contiguous: Yes  
Permitted: Yes  
Wet space: No  
Addition: No  
Conversion: No

**15** Floor 3 - W.I.C.



Dimensions: 16'2" x 8'3"  
Area: 134 sq. ft  
Counted as living area: Yes

Heated: Yes  
Finished: Yes  
Enclosed: Yes  
Contiguous: Yes  
Permitted: Yes  
Wet space: No  
Addition: No  
Conversion: No

**16** Floor 3 - Bedroom



Dimensions: 12'8" x 15'3"  
Area: 193 sq. ft  
Counted as living area: Yes

Heated: Yes  
Finished: Yes  
Enclosed: Yes  
Contiguous: Yes  
Permitted: Yes  
Wet space: No  
Addition: No  
Conversion: No

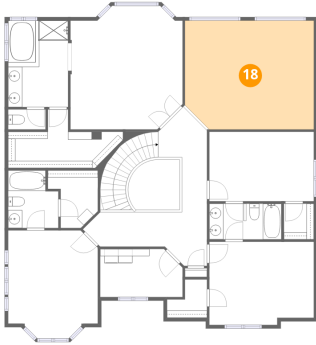
**17** Floor 3 - Primary Bath



Dimensions: 8'5" x 12'2"  
Area: 102 sq. ft  
Counted as living area: Yes

Heated: Yes  
Finished: Yes  
Enclosed: Yes  
Contiguous: Yes  
Permitted: Yes  
Wet space: Yes  
Addition: No  
Conversion: No

**18** Floor 3 - Open To Below



Dimensions: 18'2" x 15'4"  
Area: 279 sq. ft  
Counted as living area: No

Heated: No  
Finished: No  
Enclosed: No  
Contiguous: Yes  
Permitted: No  
Wet space: No  
Addition: No  
Conversion: No

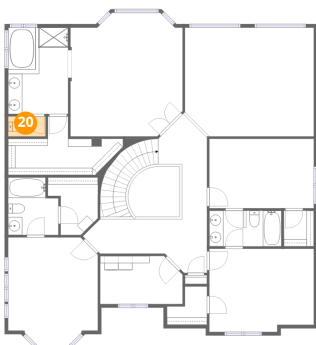
**19** Floor 3 - Laundry



Dimensions: 11'8" x 6'9"  
Area: 79 sq. ft  
Counted as living area: Yes

Heated: Yes  
Finished: Yes  
Enclosed: Yes  
Contiguous: Yes  
Permitted: Yes  
Wet space: No  
Addition: No  
Conversion: No

**20** Floor 3 - Bath



Dimensions: 5'3" x 2'9"  
Area: 15 sq. ft  
Counted as living area: Yes

Heated: Yes  
Finished: Yes  
Enclosed: Yes  
Contiguous: Yes  
Permitted: Yes  
Wet space: Yes  
Addition: No  
Conversion: No

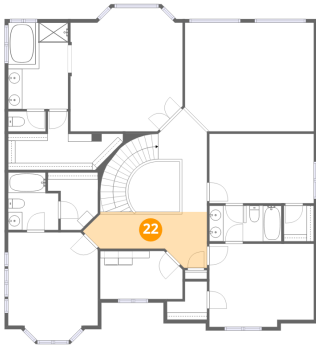
**21** Floor 3 - Bath



Dimensions: 7'1" x 8'1"  
Area: 57 sq. ft  
Counted as living area: Yes

Heated: Yes  
Finished: Yes  
Enclosed: Yes  
Contiguous: Yes  
Permitted: Yes  
Wet space: Yes  
Addition: No  
Conversion: No

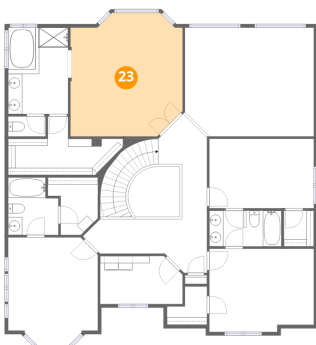
**22** Floor 3 - Hall



Dimensions: 17'6" x 7'11"  
Area: 138 sq. ft  
Counted as living area: Yes

Heated: Yes  
Finished: Yes  
Enclosed: Yes  
Contiguous: Yes  
Permitted: Yes  
Wet space: No  
Addition: No  
Conversion: No

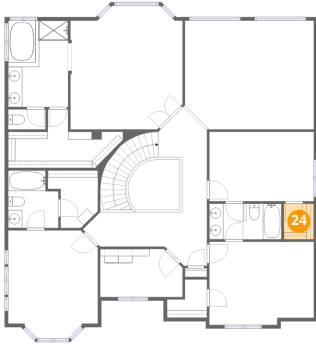
**23** Floor 3 - Primary Bedroom



Dimensions: 15'10" x 17'5"  
Area: 275 sq. ft  
Counted as living area: Yes

Heated: Yes  
Finished: Yes  
Enclosed: Yes  
Contiguous: Yes  
Permitted: Yes  
Wet space: No  
Addition: No  
Conversion: No

**24** Floor 3 - W.I.C.



Dimensions: 4'3" x 5'1"  
Area: 21 sq. ft  
Counted as living area: Yes

Heated: Yes  
Finished: Yes  
Enclosed: Yes  
Contiguous: Yes  
Permitted: Yes  
Wet space: No  
Addition: No  
Conversion: No

**25** Floor 3 - Bedroom



Dimensions: 14'9" x 11'9"  
Area: 173 sq. ft  
Counted as living area: Yes

Heated: Yes  
Finished: Yes  
Enclosed: Yes  
Contiguous: Yes  
Permitted: Yes  
Wet space: No  
Addition: No  
Conversion: No

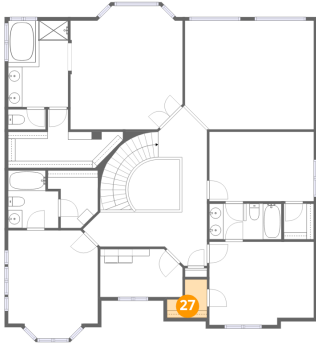
**26** Floor 3 - W.I.C.



Dimensions: 7'0" x 8'1"  
Area: 57 sq. ft  
Counted as living area: Yes

Heated: Yes  
Finished: Yes  
Enclosed: Yes  
Contiguous: Yes  
Permitted: Yes  
Wet space: No  
Addition: No  
Conversion: No

**27** Floor 3 - W.I.C.



Dimensions: 5'7" x 5'5"  
Area: 30 sq. ft  
Counted as living area: Yes

Heated: Yes  
Finished: Yes  
Enclosed: Yes  
Contiguous: Yes  
Permitted: Yes  
Wet space: No  
Addition: No  
Conversion: No

**28** Floor 3 - Open To Below



Dimensions: 3'0" x 7'1"  
Area: 21 sq. ft  
Counted as living area: No

Heated: No  
Finished: No  
Enclosed: No  
Contiguous: Yes  
Permitted: No  
Wet space: No  
Addition: No  
Conversion: No

**29** Floor 3 - Hall



Dimensions: 6'11" x 14'1"  
Area: 97 sq. ft  
Counted as living area: Yes

Heated: Yes  
Finished: Yes  
Enclosed: Yes  
Contiguous: Yes  
Permitted: Yes  
Wet space: No  
Addition: No  
Conversion: No