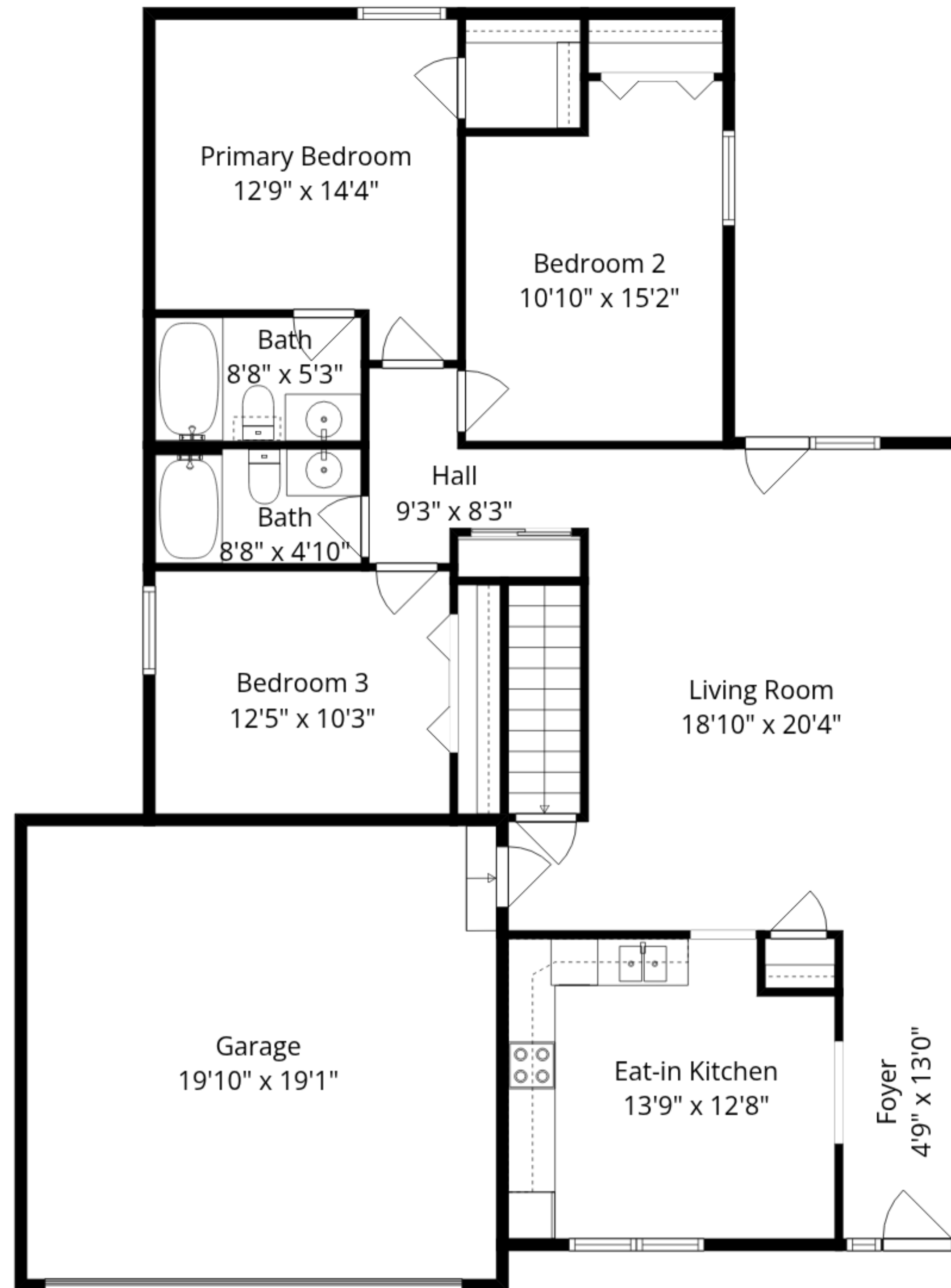
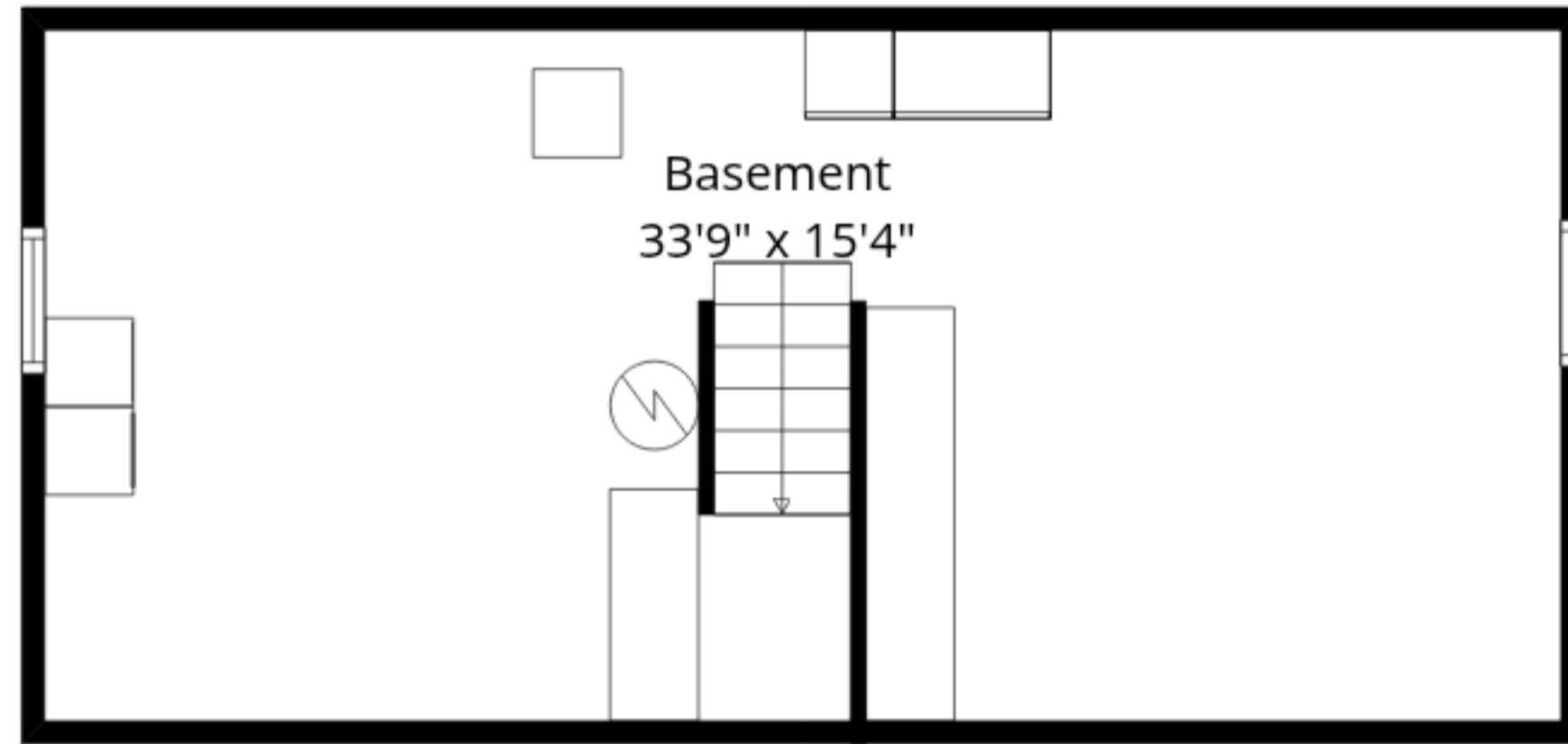


Basement
33'9" x 15'4"

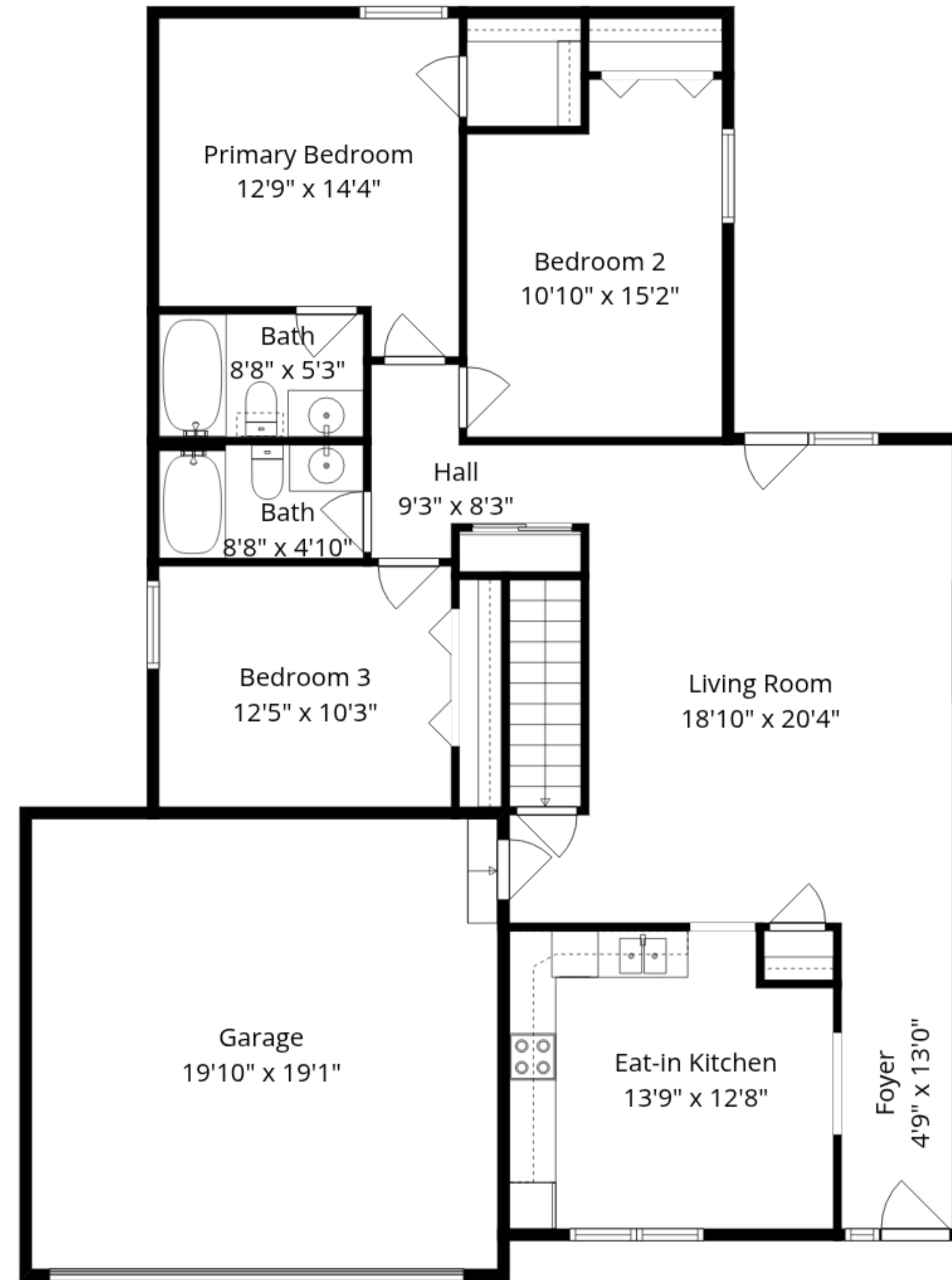


Total GLA: 1376 sq. ft | Total: 2347 sq. ft
 Lower floor: (Excluded areas 569 sq. ft)
 Main floor: 1376 sq. ft (Excluded areas 402 sq. ft)

Sizes And Dimensions Are Approximate. Actual May Vary.



Lower Floor



Main Floor

Total GLA: 1376 sq. ft | Total: 2347 sq. ft
 Lower floor: (Excluded areas 569 sq. ft)
 Main floor: 1376 sq. ft (Excluded areas 402 sq. ft)

Sizes And Dimensions Are Approximate. Actual May Vary.