

# 27653 Azalea Trail, Copeland, Athens, Limestone County, Alabama, United States, 35613

Gross Living Area: 2209 sq. ft

## Level 1



Space	Area (sq. ft)	Calculation
1st floor (Living area)	2209	Coordinate Polygon Area Algorithm using inches $-((-772.3 + -772.3) * (-543.2 - -439.4) + (-772.3 + -638) * (-439.4 - -439.4) + (-638 + -638) * (-439.4 - -360.3) + (-638 + -574.7) * (-360.3 - -360.3) + (-574.7 + -574.7) * (-360.3 - -439.4) + (-574.7 + -375.8) * (-439.4 - -439.4) + (-375.8 + -375.8) * (-439.4 - -155.5) + (-375.8 + -772.3) * (-155.5 - -155.5) + (-772.3 + -772.3) * (-155.5 - -133.4) + (-772.3 + -1286.2) * (-133.4 - -133.4) + (-1286.2 + -1286.2) * (-133.4 - -543.2) + (-1286.2 + -772.3) * (-543.2 - -543.2)) * 0.5 * 0.00694$
UTILITY (Non-living area)	35	$-((-574.7 + -574.7) * (-439.4 - -360.3) + (-574.7 + -638) * (-360.3 - -360.3) + (-638 + -638) * (-360.3 - -439.4) + (-638 + -574.7) * (-439.4 - -439.4)) * 0.5 * 0.00694$
PORCH (Non-living area)	177	$-((-772.3 + -772.3) * (-133.4 - -66) + (-772.3 + -927.3) * (-66 - -66) + (-927.3 + -927.3) * (-66 - -25.1) + (-927.3 + -971.2) * (-25.1 - -25.1) + (-971.2 + -971.2) * (-25.1 - -66) + (-971.2 + -1124.1) * (-66 - -66) + (-1124.1 + -1124.1) * (-66 - -133.4) + (-1124.1 + -772.3) * (-133.4 - -133.4)) * 0.5 * 0.00694$
COVERED DECK (Non-living area)	216	$-((-589.3 + -589.3) * (-609.5 - -439.4) + (-589.3 + -772.3) * (-439.4 - -439.4) + (-772.3 + -772.3) * (-439.4 - -609.5) + (-772.3 + -589.3) * (-609.5 - -609.5)) * 0.5 * 0.00694$

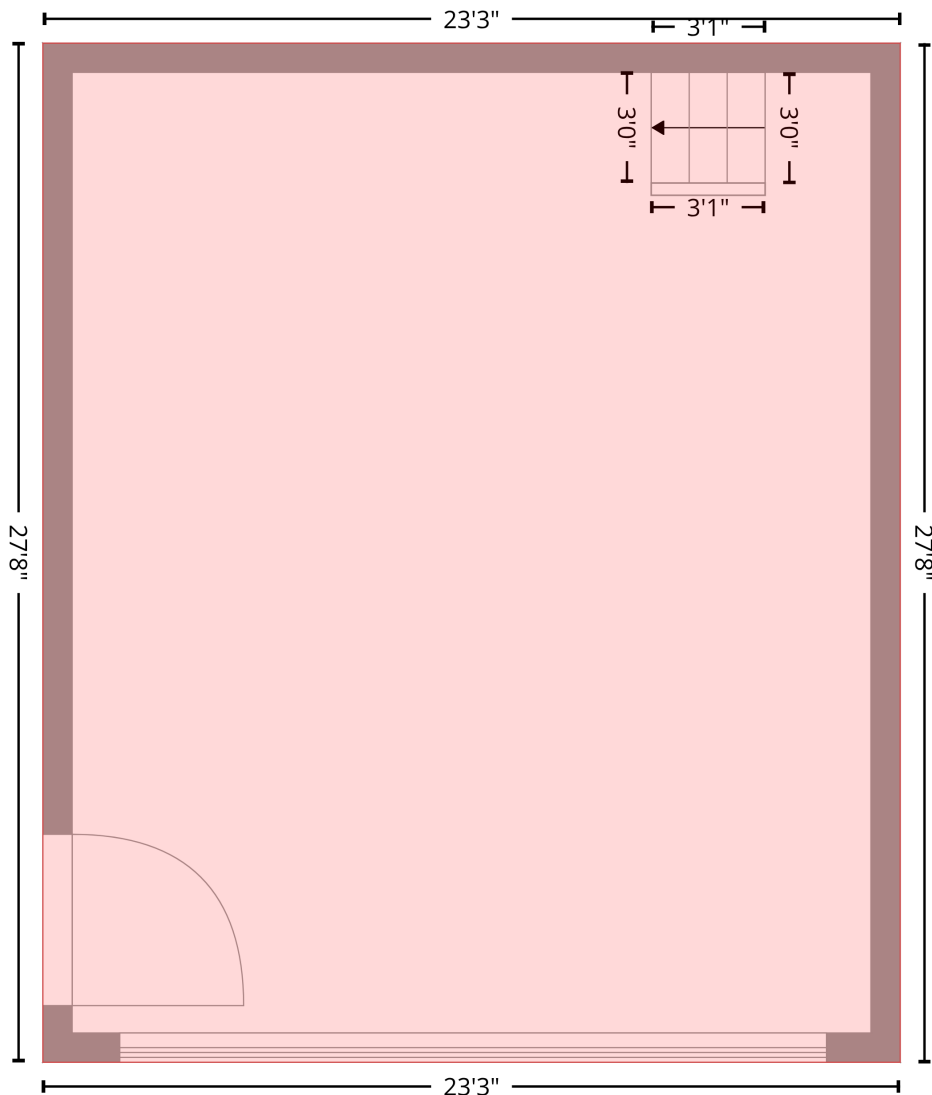
# 27653 Azalea Trail, Copeland, Athens, Limestone County, Alabama, United States, 35613

Gross Living Area: 2209 sq. ft

## Level 2

2nd floor  
[AREA: 0]

GARAGE (1)  
[AREA: 642]

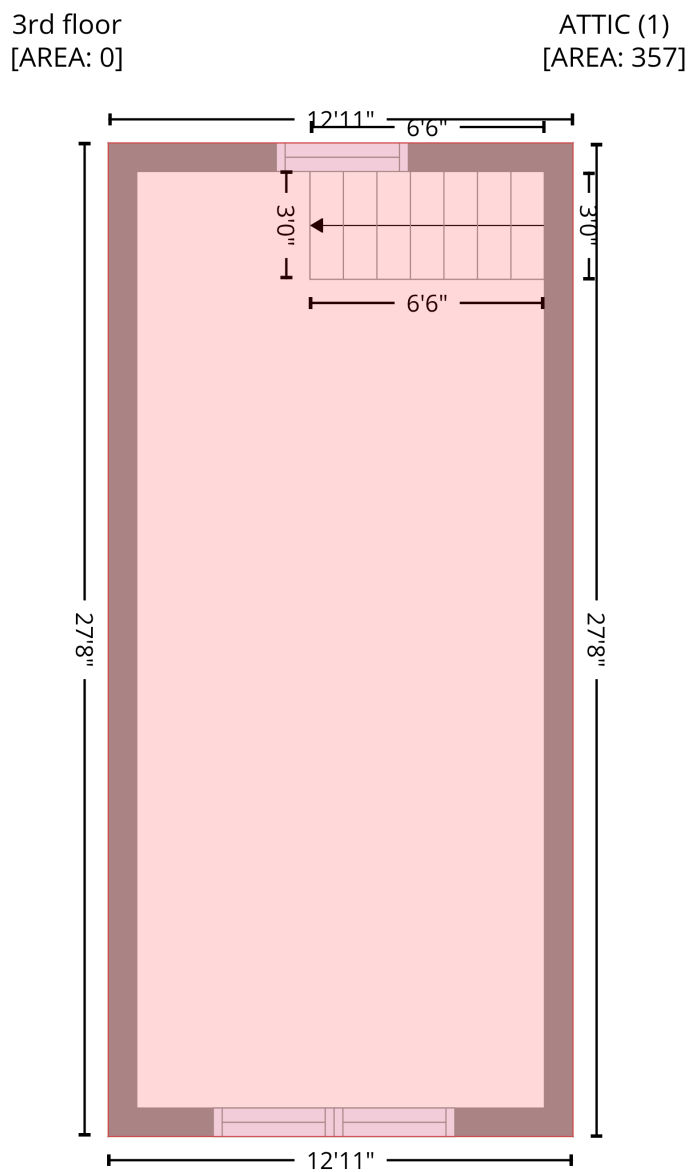


Space	Area (sq. ft)	Calculation <small>Coordinate Polygon Area Algorithm using inches</small>
GARAGE (Non-living area)	642	$-((-1.1 + -1.1) * (-990.4 - -658.8) + (-1.1 + -279.8) * (-658.8 - -658.8) + (-279.8 + -279.8) * (-658.8 - -990.4) + (-279.8 + -1.1) * (-990.4 - -990.4)) * 0.5 * 0.00694$

# 27653 Azalea Trail, Copeland, Athens, Limestone County, Alabama, United States, 35613

Gross Living Area: 2209 sq. ft

## Level 3



Space	Area (sq. ft)	Calculation <small>Coordinate Polygon Area Algorithm using inches</small>
ATTIC (Non-living area)	357	$-((-66.2 + -66.2) * (-990.4 - -658.8) + (-66.2 + -221.4) * (-658.8 - -658.8) + (-221.4 + -221.4) * (-658.8 - -990.4) + (-221.4 + -66.2) * (-990.4 - -990.4)) * 0.5 * 0.00694$