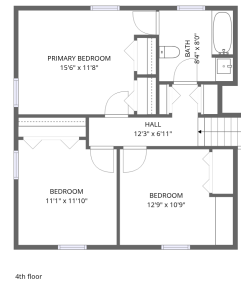
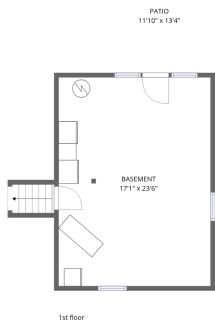
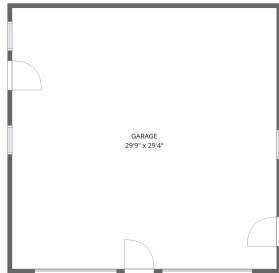


Home data report

5075 Castle Hwy, Pleasureville, KY, US



Total Area: 1821 sq. ft

1st Floor: 24 sq. ft, 2nd Floor: 633 sq. ft, 3rd Floor: 478 sq. ft, 4th Floor: 686 sq. ft

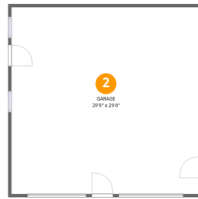
Excluded: Basement 441 sq. ft, Garage 933 sq. ft, Patio 158 sq. ft, Undefined 11 sq. ft

Property summary



Home data report

5075 Castle Hwy, Pleasureville, KY, US



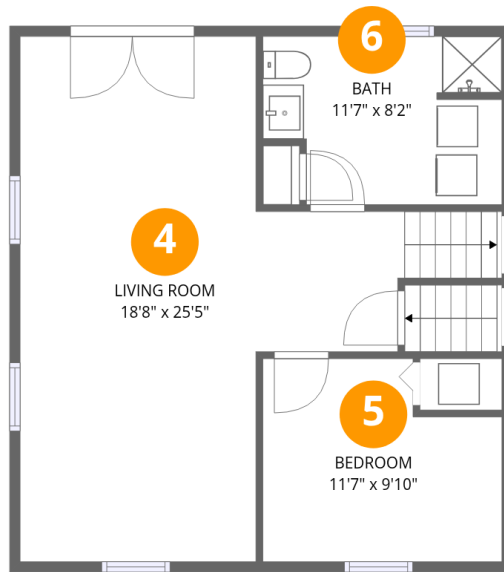
Room dimensions

Floor 1

Total: 24 sqft

Excluded: 1532 sqft

#		Dimensions	sqft	Counted as living area
1	Patio	11'10" x 13'4"	158 sq. ft	No
2	Garage	29'9" x 29'4"	873 sq. ft	No
3	Basement	17'1" x 23'6"	401 sq. ft	No

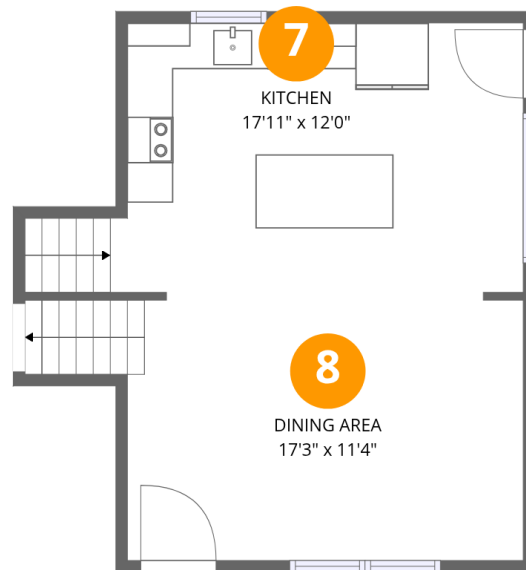


Room dimensions

Floor 2

Total:633sqft Excluded: 11sqft

#		Dimensions	sqft	Counted as living area
4	Living Room	18'8" x 25'5"	354 sq. ft	Yes
5	Bedroom	11'7" x 9'10"	102 sq. ft	Yes
6	Bath	11'7" x 8'2"	87 sq. ft	Yes



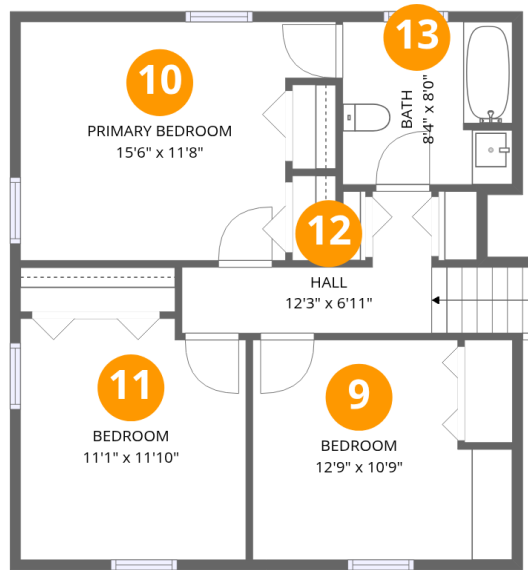
Room dimensions

Floor 3

Total:478sqft

Excluded: 0sqft

#		Dimensions	sqft	Counted as living area
7	Kitchen	17'11" x 12'0"	220 sq. ft	Yes
8	Dining Area	17'3" x 11'4"	209 sq. ft	Yes



Room dimensions

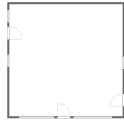
Floor 4

Total: 686 sqft

Excluded: 0 sqft

#		Dimensions	sqft	Counted as living area
9	Bedroom	12'9" x 10'9"	123 sq. ft	Yes
10	Primary Bedroom	15'6" x 11'8"	159 sq. ft	Yes
11	Bedroom	11'1" x 11'10"	127 sq. ft	Yes
12	Hall	12'3" x 6'11"	67 sq. ft	Yes
13	Bath	8'4" x 8'0"	66 sq. ft	Yes

1 Floor 1 - Patio

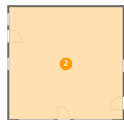


Dimensions: 11'10" x 13'4"
Area: 158 sq. ft
Counted as living area: No

Heated: No
Finished: No
Enclosed: No
Contiguous: Yes
Permitted: Yes
Wet space: No
Addition: No
Conversion: No



2 Floor 1 - Garage

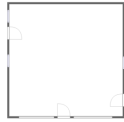


Dimensions: 29'9" x 29'4"
Area: 873 sq. ft
Counted as living area: No

Heated: No
Finished: No
Enclosed: Yes
Contiguous: Yes
Permitted: Yes
Wet space: No
Addition: No
Conversion: No



3 Floor 1 - Basement

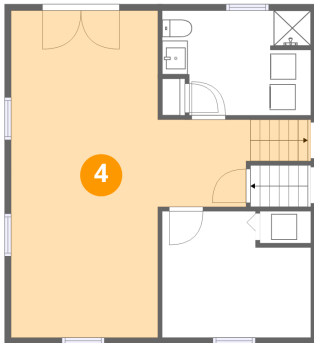


Dimensions: 17'1" x 23'6"
Area: 401 sq. ft
Counted as living area: No

Heated: Yes
Finished: No
Enclosed: Yes
Contiguous: Yes
Permitted: Yes
Wet space: No
Addition: No
Conversion: No



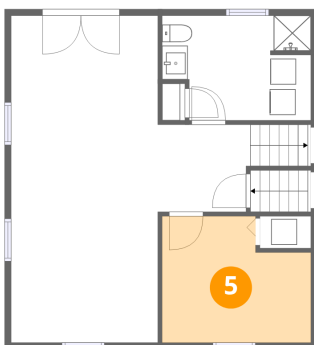
4 Floor 2 - Living Room



Dimensions: 18'8" x 25'5"
Area: 354 sq. ft
Counted as living area: Yes

Heated: Yes
Finished: Yes
Enclosed: Yes
Contiguous: Yes
Permitted: Yes
Wet space: No
Addition: No
Conversion: No

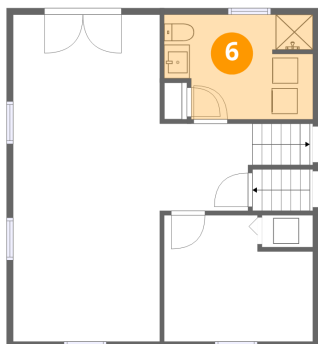
5 Floor 2 - Bedroom



Dimensions: 11'7" x 9'10"
Area: 102 sq. ft
Counted as living area: Yes

Heated: Yes
Finished: Yes
Enclosed: Yes
Contiguous: Yes
Permitted: Yes
Wet space: No
Addition: No
Conversion: No

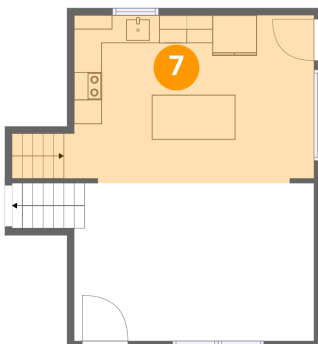
6 Floor 2 - Bath



Dimensions: 11'7" x 8'2"
Area: 87 sq. ft
Counted as living area: Yes

Heated: Yes
Finished: Yes
Enclosed: Yes
Contiguous: Yes
Permitted: Yes
Wet space: Yes
Addition: No
Conversion: No

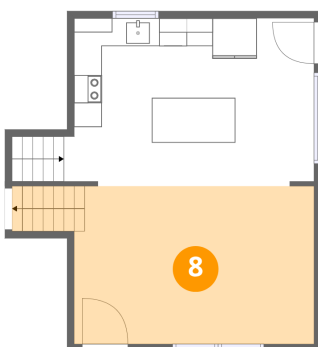
7 Floor 3 - Kitchen



Dimensions: 17'11" x 12'0"
Area: 220 sq. ft
Counted as living area: Yes

Heated: Yes
Finished: Yes
Enclosed: Yes
Contiguous: Yes
Permitted: Yes
Wet space: No
Addition: No
Conversion: No

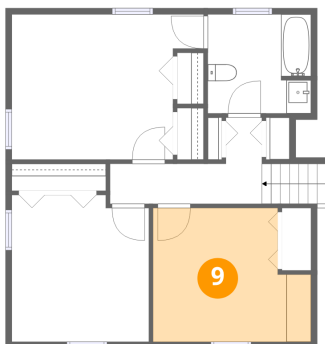
8 Floor 3 - Dining Area



Dimensions: 17'3" x 11'4"
Area: 209 sq. ft
Counted as living area: Yes

Heated: Yes
Finished: Yes
Enclosed: Yes
Contiguous: Yes
Permitted: Yes
Wet space: No
Addition: No
Conversion: No

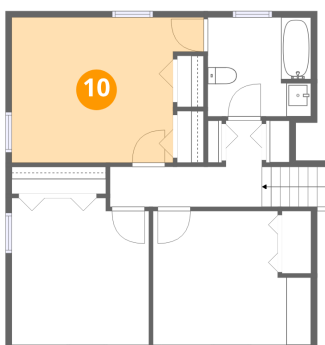
9 Floor 4 - Bedroom



Dimensions: 12'9" x 10'9"
Area: 123 sq. ft
Counted as living area: Yes

Heated: Yes
Finished: Yes
Enclosed: Yes
Contiguous: Yes
Permitted: Yes
Wet space: No
Addition: No
Conversion: No

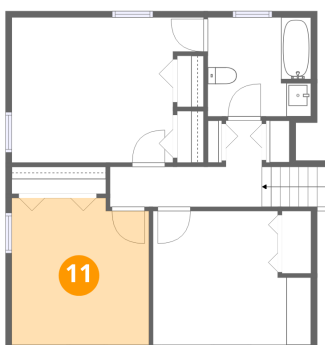
10 Floor 4 - Primary Bedroom



Dimensions: 15'6" x 11'8"
Area: 159 sq. ft
Counted as living area: Yes

Heated: Yes
Finished: Yes
Enclosed: Yes
Contiguous: Yes
Permitted: Yes
Wet space: No
Addition: No
Conversion: No

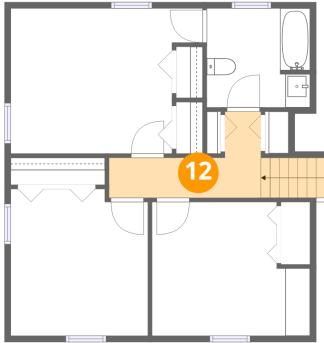
11 Floor 4 - Bedroom



Dimensions: 11'1" x 11'10"
Area: 127 sq. ft
Counted as living area: Yes

Heated: Yes
Finished: Yes
Enclosed: Yes
Contiguous: Yes
Permitted: Yes
Wet space: No
Addition: No
Conversion: No

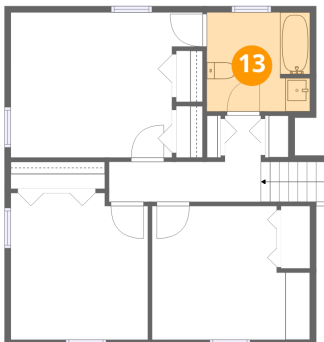
12 Floor 4 - Hall



Dimensions: 12'3" x 6'11"
Area: 67 sq. ft
Counted as living area: Yes

Heated: Yes
Finished: Yes
Enclosed: Yes
Contiguous: Yes
Permitted: Yes
Wet space: No
Addition: No
Conversion: No

13 Floor 4 - Bath



Dimensions: 8'4" x 8'0"
Area: 66 sq. ft
Counted as living area: Yes

Heated: Yes
Finished: Yes
Enclosed: Yes
Contiguous: Yes
Permitted: Yes
Wet space: Yes
Addition: No
Conversion: No