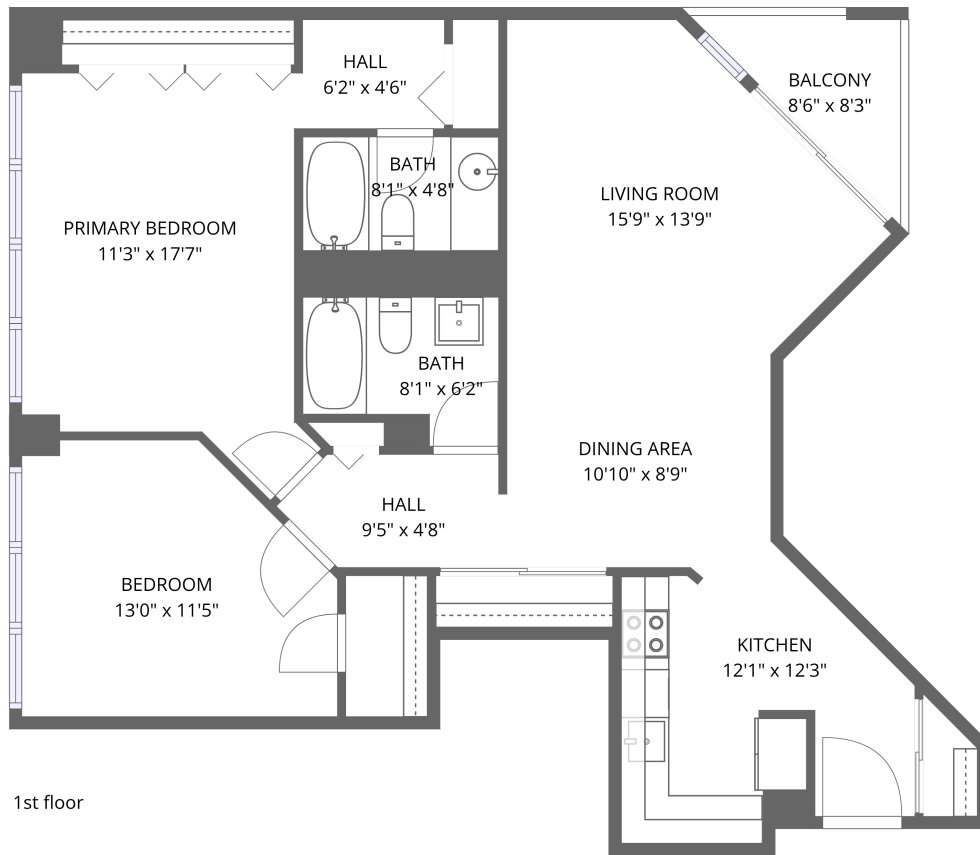


Home data report

5320 N Sheridan Rd, Chicago, IL, US




**Total Area: 963 sq. ft**

1st Floor: 963 sq. ft

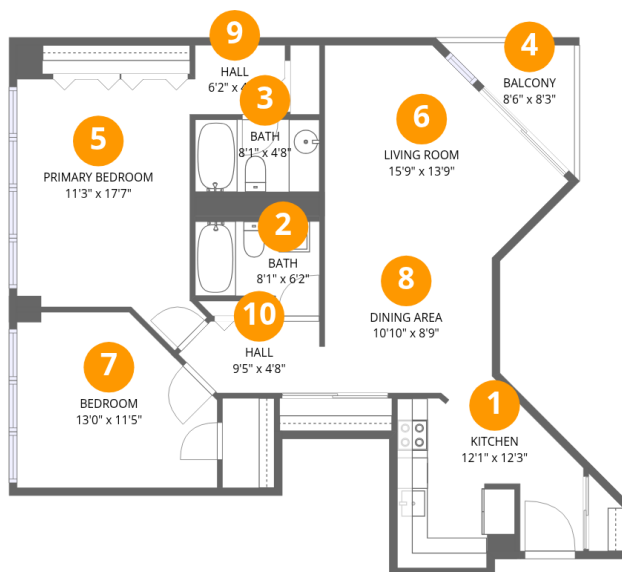
Excluded: Balcony 37 sq. ft, Walls: 0 sq. ft

## Property summary

 **1** Floors

 **2** Bedrooms

 **2** Bathrooms



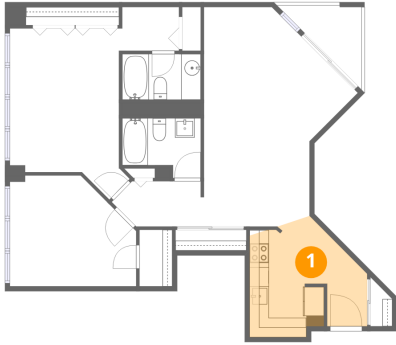
## Room dimensions

Floor 1

Total:963sqft Excluded: 37sqft

#		Dimensions	sqft	Counted as living area
1	Kitchen	12'1" x 12'3"	148 sq. ft	Yes
2	Bath	8'1" x 6'2"	49 sq. ft	Yes
3	Bath	8'1" x 4'8"	38 sq. ft	Yes
4	Balcony	8'6" x 8'3"	70 sq. ft	No
5	Primary Bedroom	11'3" x 17'7"	197 sq. ft	Yes
6	Living Room	15'9" x 13'9"	217 sq. ft	Yes
7	Bedroom	13'0" x 11'5"	148 sq. ft	Yes
8	Dining Area	10'10" x 8'9"	95 sq. ft	Yes
9	Hall	6'2" x 4'6"	28 sq. ft	Yes
10	Hall	9'5" x 4'8"	44 sq. ft	Yes

## 1 Floor 1 - Kitchen



Dimensions: 12'1" x 12'3"  
Area: 148 sq. ft  
Counted as living area: Yes

Heated: Yes  
Finished: Yes  
Enclosed: Yes  
Contiguous: Yes  
Permitted: Yes  
Wet space: No  
Addition: No  
Conversion: No

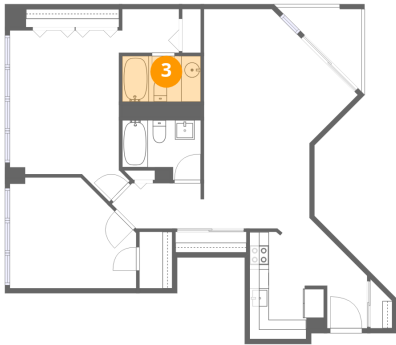
## 2 Floor 1 - Bath



Dimensions: 8'1" x 6'2"  
Area: 49 sq. ft  
Counted as living area: Yes

Heated: Yes  
Finished: Yes  
Enclosed: Yes  
Contiguous: Yes  
Permitted: Yes  
Wet space: Yes  
Addition: No  
Conversion: No

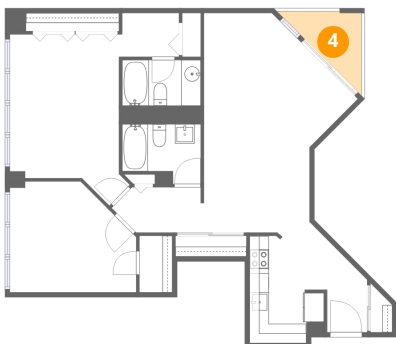
### 3 Floor 1 - Bath



Dimensions: 8'1" x 4'8"  
Area: 38 sq. ft  
Counted as living area: Yes

Heated: Yes  
Finished: Yes  
Enclosed: Yes  
Contiguous: Yes  
Permitted: Yes  
Wet space: Yes  
Addition: No  
Conversion: No

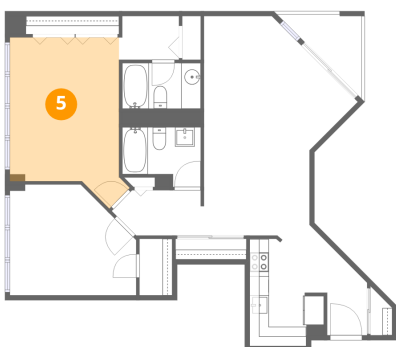
### 4 Floor 1 - Balcony



Dimensions: 8'6" x 8'3"  
Area: 70 sq. ft  
Counted as living area: No

Heated: No  
Finished: No  
Enclosed: No  
Contiguous: Yes  
Permitted: Yes  
Wet space: No  
Addition: No  
Conversion: No

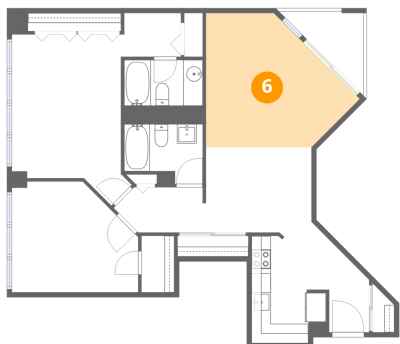
### 5 Floor 1 - Primary Bedroom



Dimensions: 11'3" x 17'7"  
Area: 197 sq. ft  
Counted as living area: Yes

Heated: Yes  
Finished: Yes  
Enclosed: Yes  
Contiguous: Yes  
Permitted: Yes  
Wet space: No  
Addition: No  
Conversion: No

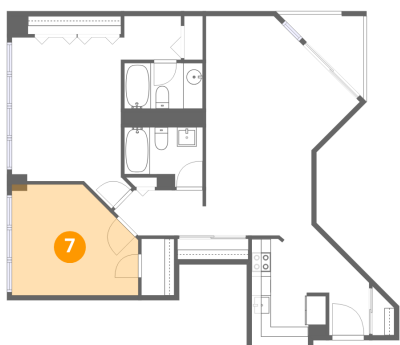
## 6 Floor 1 - Living Room



Dimensions: 15'9" x 13'9"  
Area: 217 sq. ft  
Counted as living area: Yes

Heated: Yes  
Finished: Yes  
Enclosed: Yes  
Contiguous: Yes  
Permitted: Yes  
Wet space: No  
Addition: No  
Conversion: No

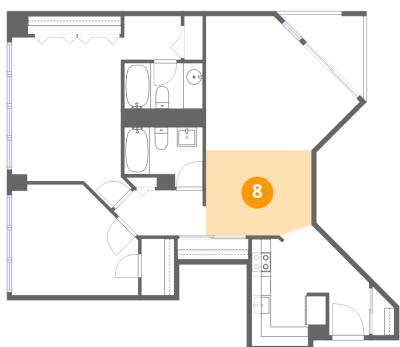
## 7 Floor 1 - Bedroom



Dimensions: 13'0" x 11'5"  
Area: 148 sq. ft  
Counted as living area: Yes

Heated: Yes  
Finished: Yes  
Enclosed: Yes  
Contiguous: Yes  
Permitted: Yes  
Wet space: No  
Addition: No  
Conversion: No

## 8 Floor 1 - Dining Area

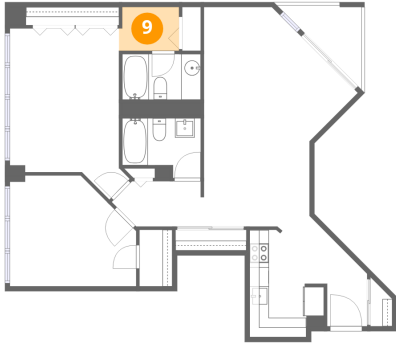


Dimensions: 10'10" x 8'9"  
Area: 95 sq. ft  
Counted as living area: Yes

Heated: Yes  
Finished: Yes  
Enclosed: Yes  
Contiguous: Yes  
Permitted: Yes  
Wet space: No  
Addition: No  
Conversion: No

**9** Floor 1 - Hall

---

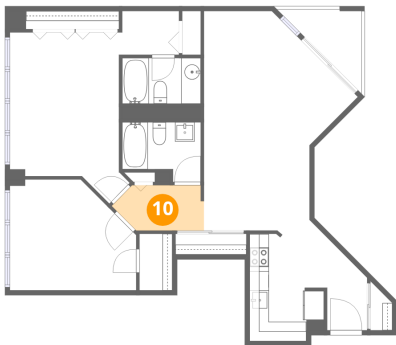


Dimensions: 6'2" x 4'6"  
Area: 28 sq. ft  
Counted as living area: Yes

Heated: Yes  
Finished: Yes  
Enclosed: Yes  
Contiguous: Yes  
Permitted: Yes  
Wet space: No  
Addition: No  
Conversion: No

**10** Floor 1 - Hall

---



Dimensions: 9'5" x 4'8"  
Area: 44 sq. ft  
Counted as living area: Yes

Heated: Yes  
Finished: Yes  
Enclosed: Yes  
Contiguous: Yes  
Permitted: Yes  
Wet space: No  
Addition: No  
Conversion: No