

STORAGE  
24'3" X 27'10"

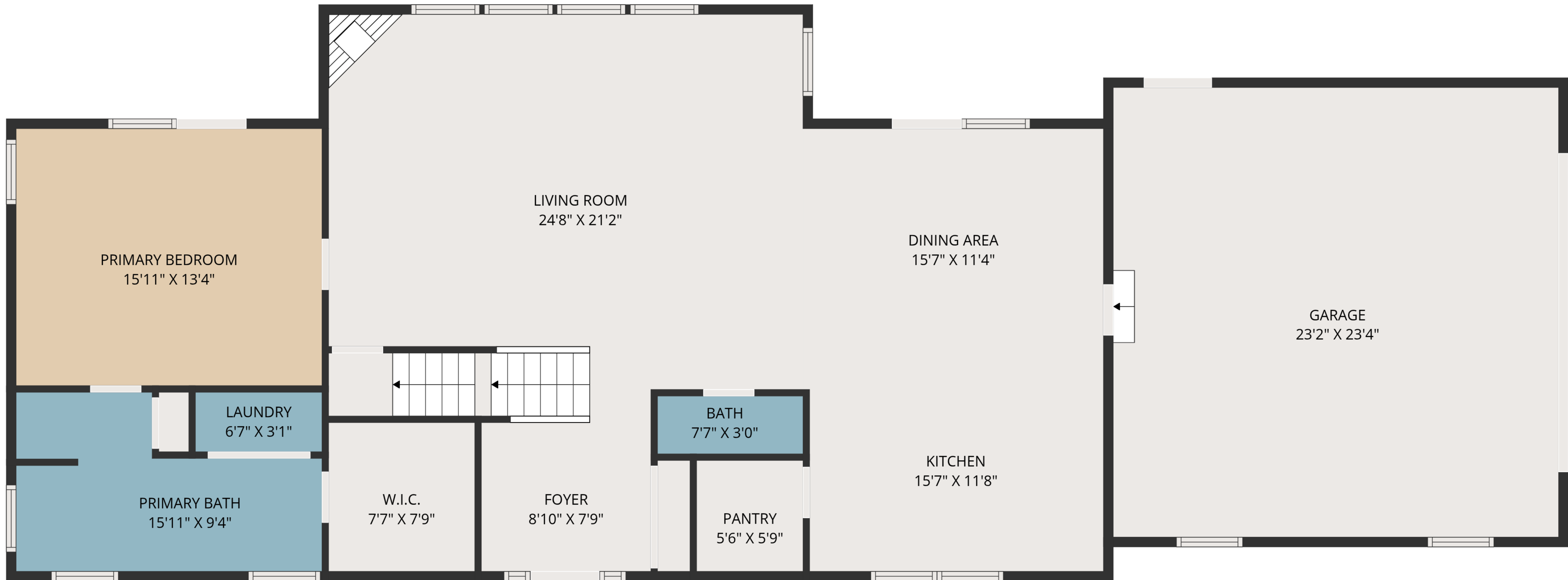
RECREATION ROOM  
31'11" X 27'10"

BATH  
12'3" X 6'8"

**TOTAL: 2956 sq. ft**

1st floor: 843 sq. ft, 2nd floor: 1446 sq. ft, 3rd floor: 667 sq. ft  
EXCLUDED AREAS: STORAGE: 543 sq. ft, GARAGE: 541 sq. ft, ATTIC: 139 sq. ft,  
OPEN TO BELOW: 344 sq. ft, WALLS: 300 sq. ft

MEASUREMENTS ARE DEEMED HIGHLY RELIABLE BUT NOT GUARANTEED.



**TOTAL: 2956 sq. ft**

1st floor: 843 sq. ft, 2nd floor: 1446 sq. ft, 3rd floor: 667 sq. ft

EXCLUDED AREAS: STORAGE: 543 sq. ft, GARAGE: 541 sq. ft, ATTIC: 139 sq. ft,

OPEN TO BELOW: 344 sq. ft, WALLS: 300 sq. ft

MEASUREMENTS ARE DEEMED HIGHLY RELIABLE BUT NOT GUARANTEED.



**TOTAL: 2956 sq. ft**

1st floor: 843 sq. ft, 2nd floor: 1446 sq. ft, 3rd floor: 667 sq. ft

EXCLUDED AREAS: STORAGE: 543 sq. ft, GARAGE: 541 sq. ft, ATTIC: 139 sq. ft,

OPEN TO BELOW: 344 sq. ft, WALLS: 300 sq. ft

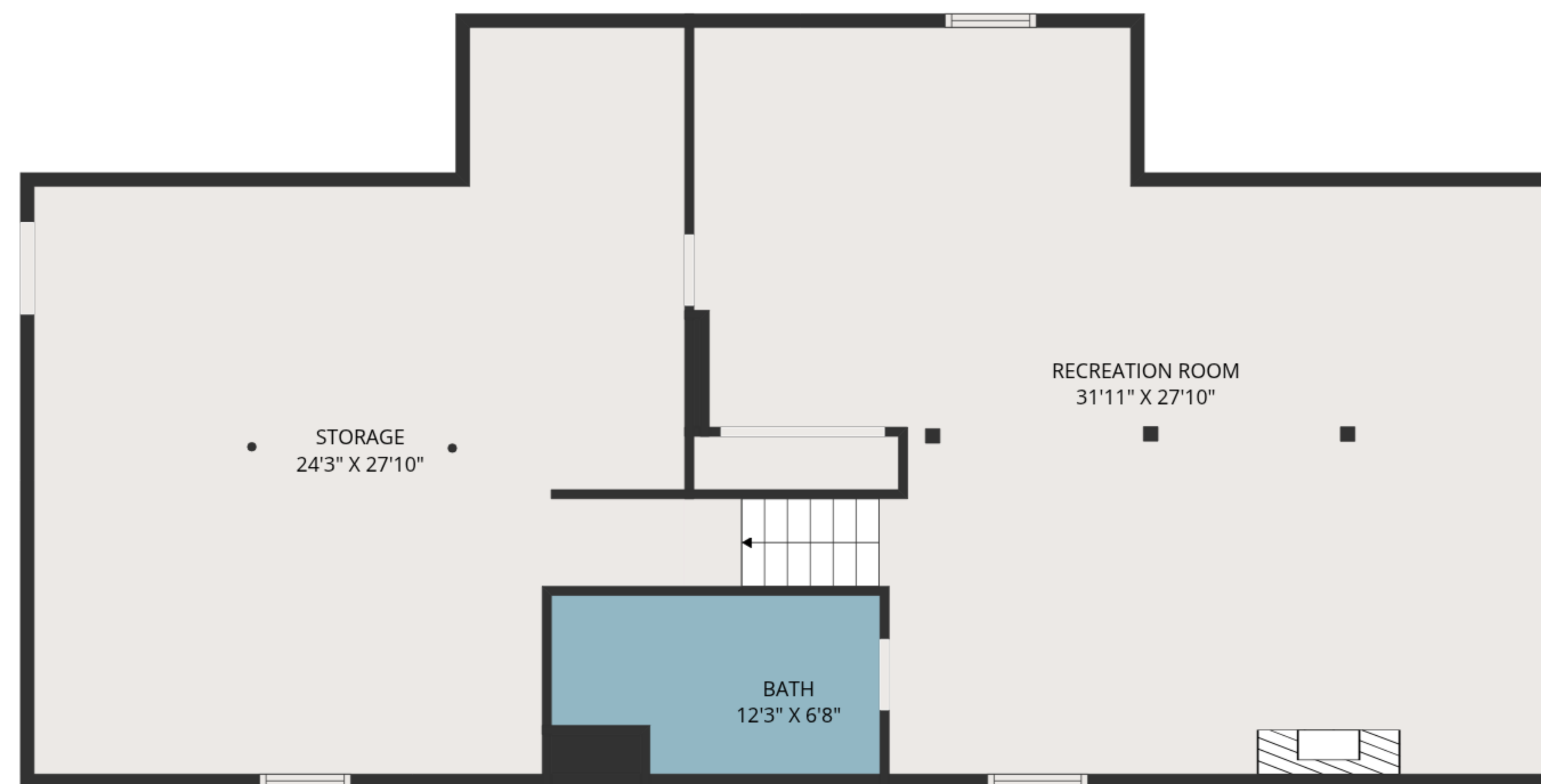
MEASUREMENTS ARE DEEMED HIGHLY RELIABLE BUT NOT GUARANTEED.



3RD FLOOR



2ND FLOOR



1ST FLOOR

**TOTAL: 2956 sq. ft**

1st floor: 843 sq. ft, 2nd floor: 1446 sq. ft, 3rd floor: 667 sq. ft

EXCLUDED AREAS: STORAGE: 543 sq. ft, GARAGE: 541 sq. ft, ATTIC: 139 sq. ft,

OPEN TO BELOW: 344 sq. ft, WALLS: 300 sq. ft

MEASUREMENTS ARE DEEMED HIGHLY RELIABLE BUT NOT GUARANTEED.