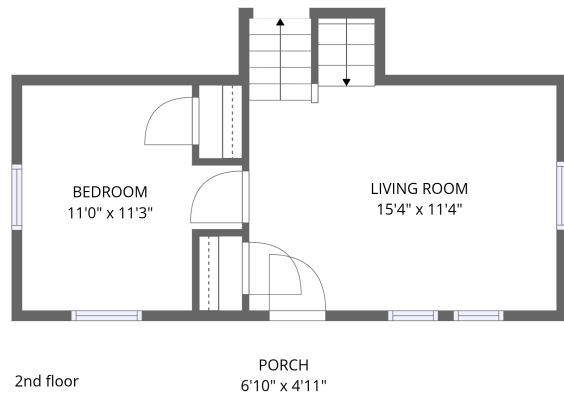
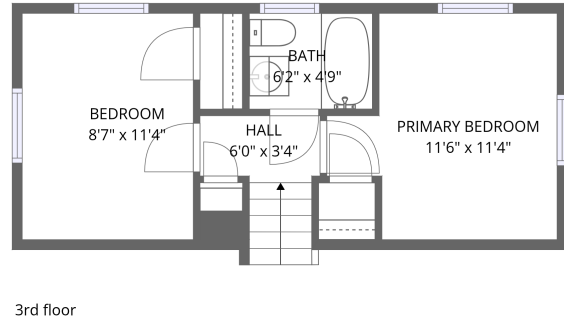
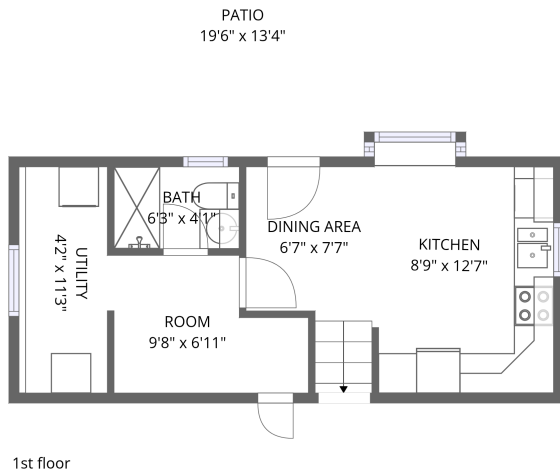


Home data report

1425 D St, Woodbridge, VA, US



Total Area: 887 sq. ft

1st Floor: 258 sq. ft, 2nd Floor: 323 sq. ft, 3rd Floor: 306 sq. ft

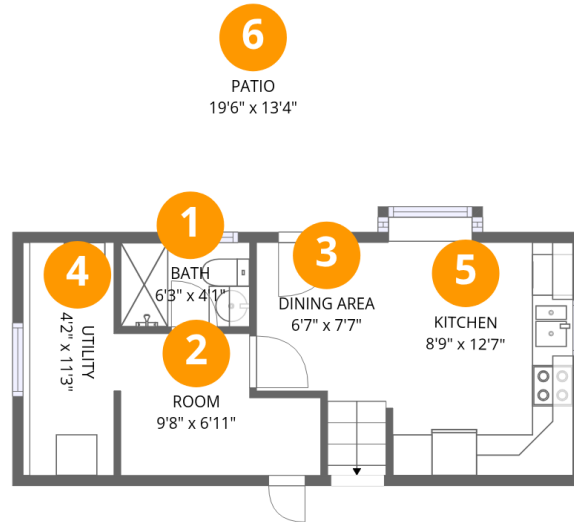
Excluded: Utility 51 sq. ft, Patio 257 sq. ft, Porch 34 sq. ft, Walls: 118 sq. ft

Property summary



Home data report

1425 D St, Woodbridge, VA, US



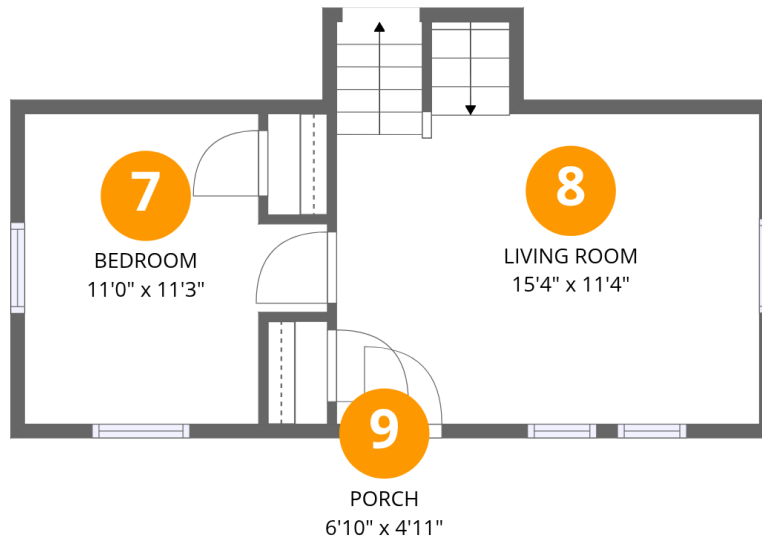
Room dimensions

Floor 1

Total: 258 sqft

Excluded: 308 sqft

#		Dimensions	sqft	Counted as living area
1	Bath	6'3" x 4'1"	26 sq. ft	Yes
2	Room	9'8" x 6'11"	66 sq. ft	Yes
3	Dining Area	6'7" x 7'7"	50 sq. ft	Yes
4	Utility	4'2" x 11'3"	47 sq. ft	No
5	Kitchen	8'9" x 12'7"	109 sq. ft	Yes
6	Patio	19'6" x 13'4"	260 sq. ft	No



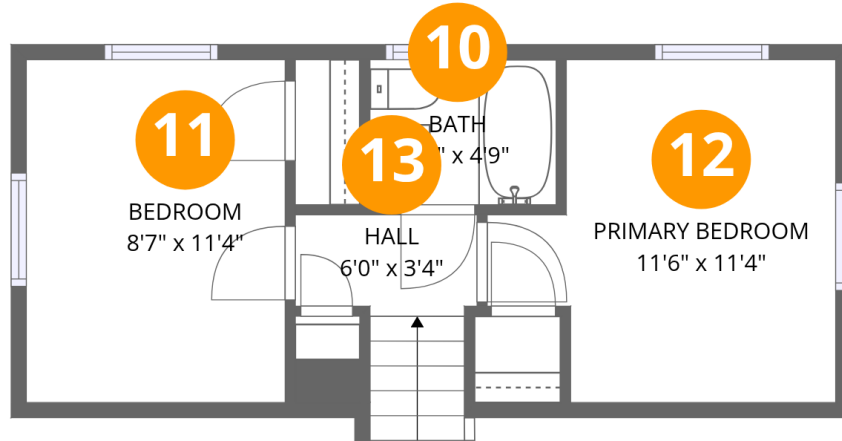
Room dimensions

Floor 2

Total:323sqft

Excluded: 34sqft

#		Dimensions	sqft	Counted as living area
7	Bedroom	11'0" x 11'3"	124 sq. ft	Yes
8	Living Room	15'4" x 11'4"	174 sq. ft	Yes
9	Porch	6'10" x 4'11"	34 sq. ft	No



Room dimensions

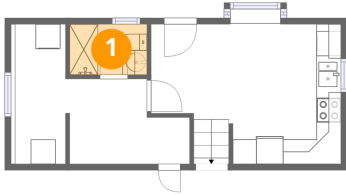
Floor 3

Total:306sqft

Excluded: 0sqft

#		Dimensions	sqft	Counted as living area
10	Bath	6'2" x 4'9"	29 sq. ft	Yes
11	Bedroom	8'7" x 11'4"	97 sq. ft	Yes
12	Primary Bedroom	11'6" x 11'4"	130 sq. ft	Yes
13	Hall	6'0" x 3'4"	20 sq. ft	Yes

1 Floor 1 - Bath



Dimensions: 6'3" x 4'1"
Area: 26 sq. ft
Counted as living area: Yes

Heated: Yes
Finished: Yes
Enclosed: Yes
Contiguous: Yes
Permitted: Yes
Wet space: Yes
Addition: No
Conversion: No

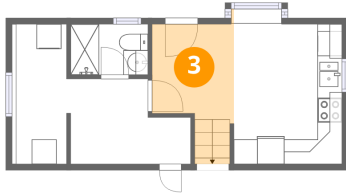
2 Floor 1 - Room



Dimensions: 9'8" x 6'11"
Area: 66 sq. ft
Counted as living area: Yes

Heated: Yes
Finished: Yes
Enclosed: Yes
Contiguous: Yes
Permitted: Yes
Wet space: No
Addition: No
Conversion: No

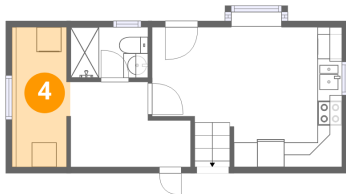
3 Floor 1 - Dining Area



Dimensions: 6'7" x 7'7"
Area: 50 sq. ft
Counted as living area: Yes

Heated: Yes
Finished: Yes
Enclosed: Yes
Contiguous: Yes
Permitted: Yes
Wet space: No
Addition: No
Conversion: No

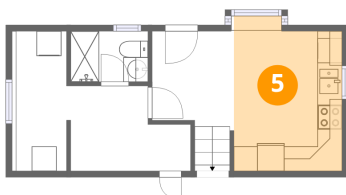
4 Floor 1 - Utility



Dimensions: 4'2" x 11'3"
Area: 47 sq. ft
Counted as living area: No

Heated: Yes
Finished: No
Enclosed: Yes
Contiguous: Yes
Permitted: Yes
Wet space: No
Addition: No
Conversion: No

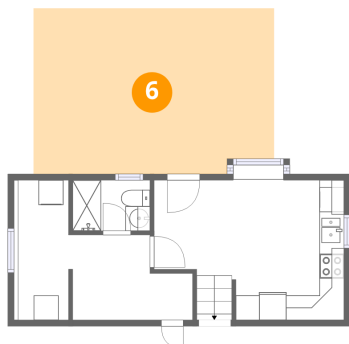
5 Floor 1 - Kitchen



Dimensions: 8'9" x 12'7"
Area: 109 sq. ft
Counted as living area: Yes

Heated: Yes
Finished: Yes
Enclosed: Yes
Contiguous: Yes
Permitted: Yes
Wet space: No
Addition: No
Conversion: No

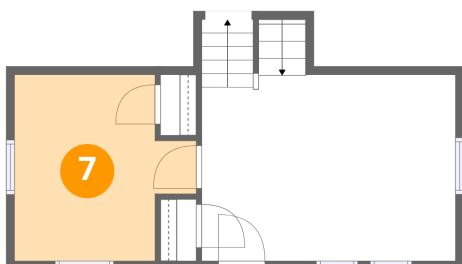
6 Floor 1 - Patio



Dimensions: 19'6" x 13'4"
Area: 260 sq. ft
Counted as living area: No

Heated: No
Finished: No
Enclosed: No
Contiguous: Yes
Permitted: Yes
Wet space: No
Addition: No
Conversion: No

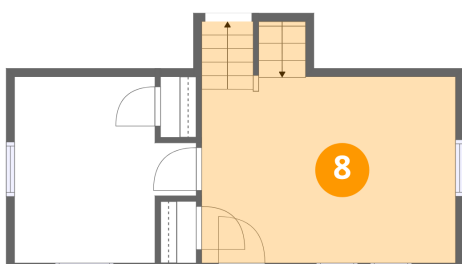
7 Floor 2 - Bedroom



Dimensions: 11'0" x 11'3"
Area: 124 sq. ft
Counted as living area: Yes

Heated: Yes
Finished: Yes
Enclosed: Yes
Contiguous: Yes
Permitted: Yes
Wet space: No
Addition: No
Conversion: No

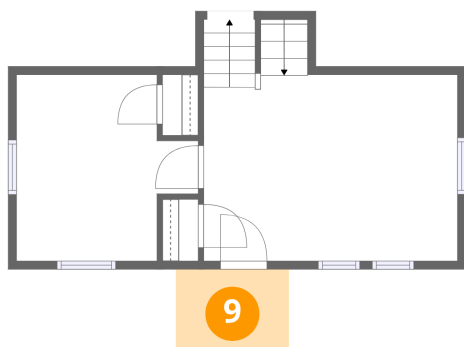
8 Floor 2 - Living Room



Dimensions: 15'4" x 11'4"
Area: 174 sq. ft
Counted as living area: Yes

Heated: Yes
Finished: Yes
Enclosed: Yes
Contiguous: Yes
Permitted: Yes
Wet space: No
Addition: No
Conversion: No

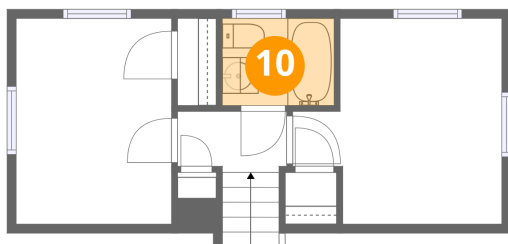
9 Floor 2 - Porch



Dimensions: 6'10" x 4'11"
Area: 34 sq. ft
Counted as living area: No

Heated: No
Finished: No
Enclosed: No
Contiguous: Yes
Permitted: Yes
Wet space: No
Addition: No
Conversion: No

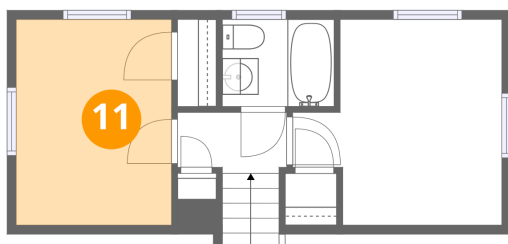
10 Floor 3 - Bath



Dimensions: 6'2" x 4'9"
Area: 29 sq. ft
Counted as living area: Yes

Heated: Yes
Finished: Yes
Enclosed: Yes
Contiguous: Yes
Permitted: Yes
Wet space: Yes
Addition: No
Conversion: No

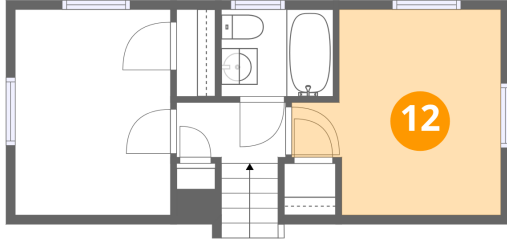
11 Floor 3 - Bedroom



Dimensions: 8'7" x 11'4"
Area: 97 sq. ft
Counted as living area: Yes

Heated: Yes
Finished: Yes
Enclosed: Yes
Contiguous: Yes
Permitted: Yes
Wet space: No
Addition: No
Conversion: No

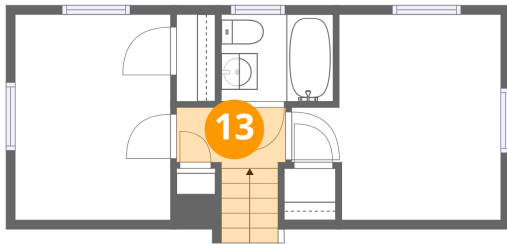
12 Floor 3 - Primary Bedroom



Dimensions: 11'6" x 11'4"
Area: 130 sq. ft
Counted as living area: Yes

Heated: Yes
Finished: Yes
Enclosed: Yes
Contiguous: Yes
Permitted: Yes
Wet space: No
Addition: No
Conversion: No

13 Floor 3 - Hall



Dimensions: 6'0" x 3'4"
Area: 20 sq. ft
Counted as living area: Yes

Heated: Yes
Finished: Yes
Enclosed: Yes
Contiguous: Yes
Permitted: Yes
Wet space: No
Addition: No
Conversion: No