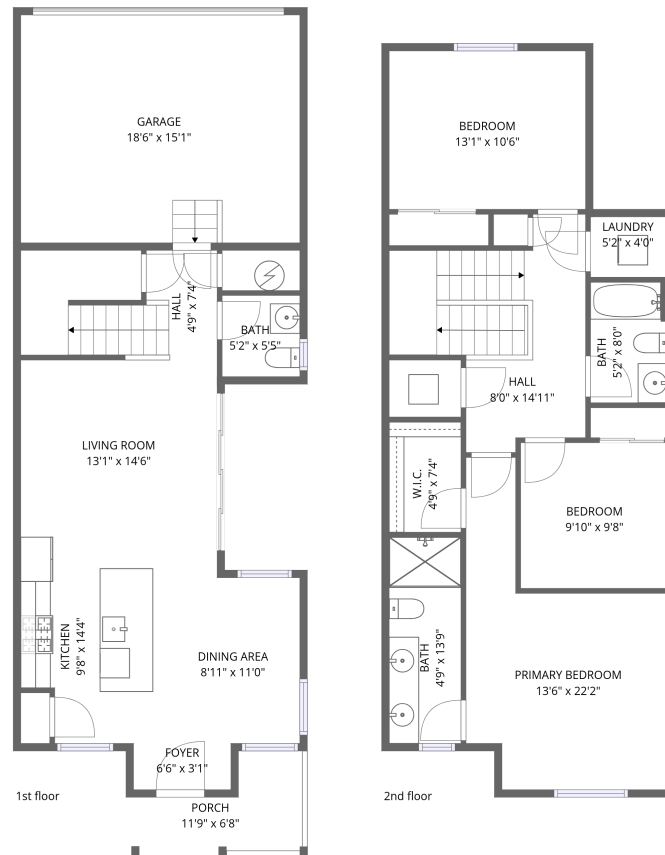


Home data report

5330 Spalding Place, Frederick, Weld County, Colorado, United States, 80504



Total Area: 1374 sq. ft

1st Floor: 543 sq. ft, 2nd Floor: 831 sq. ft

Excluded: Undefined 14 sq. ft, Garage 282 sq. ft, Porch 55 sq. ft, Walls: 155 sq. ft

Property summary

 **2** Floors

 **3** Bedrooms

 **2** Bathrooms

Home data report

5330 Spalding Place, Frederick, Weld County, Colorado, United States, 80504



1
Half baths



1
Garages

Home data report

5330 Spalding Place, Frederick, Weld County, Colorado, United States, 80504



Room dimensions

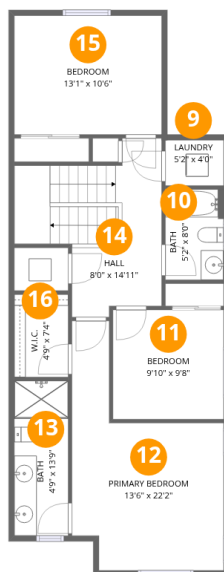
Floor 1

Total:543sqft Excluded: 351sqft

#		Dimensions	sqft	Counted as living area
1	Porch	11'9" x 6'8"	78 sq. ft	No
2	Kitchen	9'8" x 14'4"	139 sq. ft	Yes
3	Garage	18'6" x 15'1"	280 sq. ft	No
4	Bath	5'2" x 5'5"	28 sq. ft	Yes
5	Dining Area	8'11" x 11'0"	98 sq. ft	Yes
6	Foyer	6'6" x 3'1"	20 sq. ft	Yes
7	Hall	4'9" x 7'4"	34 sq. ft	Yes
8	Living Room	13'1" x 14'6"	190 sq. ft	Yes

Home data report

5330 Spalding Place, Frederick, Weld County, Colorado, United States, 80504



Room dimensions

Floor 2

Total:831sqft Excluded: 0sqft

#		Dimensions	sqft	Counted as living area
9	Laundry	5'2" x 4'0"	21 sq. ft	Yes
10	Bath	5'2" x 8'0"	41 sq. ft	Yes
11	Bedroom	9'10" x 9'8"	95 sq. ft	Yes
12	Primary Bedroom	13'6" x 22'2"	298 sq. ft	Yes
13	Bath	4'9" x 13'9"	66 sq. ft	Yes
14	Hall	8'0" x 14'11"	119 sq. ft	Yes
15	Bedroom	13'1" x 10'6"	138 sq. ft	Yes
16	W.I.C.	4'9" x 7'4"	35 sq. ft	Yes

1 Floor 1 - Porch



Dimensions: 11'9" x 6'8"
Area: 78 sq. ft
Counted as living area: No

Heated: No
Finished: No
Enclosed: No
Contiguous: Yes
Permitted: Yes
Wet space: No
Addition: No
Conversion: No

2 Floor 1 - Kitchen



Dimensions: 9'8" x 14'4"
Area: 139 sq. ft
Counted as living area: Yes

Heated: Yes
Finished: Yes
Enclosed: Yes
Contiguous: Yes
Permitted: Yes
Wet space: No
Addition: No
Conversion: No

3 Floor 1 - Garage



Dimensions: 18'6" x 15'1"
Area: 280 sq. ft
Counted as living area: No

Heated: No
Finished: No
Enclosed: Yes
Contiguous: Yes
Permitted: Yes
Wet space: No
Addition: No
Conversion: No

4 Floor 1 - Bath



Dimensions: 5'2" x 5'5"
Area: 28 sq. ft
Counted as living area: Yes

Heated: Yes
Finished: Yes
Enclosed: Yes
Contiguous: Yes
Permitted: Yes
Wet space: Yes
Addition: No
Conversion: No

5 Floor 1 - Dining Area



Dimensions: 8'11" x 11'0"
Area: 98 sq. ft
Counted as living area: Yes

Heated: Yes
Finished: Yes
Enclosed: Yes
Contiguous: Yes
Permitted: Yes
Wet space: No
Addition: No
Conversion: No

6 Floor 1 - Foyer



Dimensions: 6'6" x 3'1"
Area: 20 sq. ft
Counted as living area: Yes

Heated: Yes
Finished: Yes
Enclosed: Yes
Contiguous: Yes
Permitted: Yes
Wet space: No
Addition: No
Conversion: No

7 Floor 1 - Hall



Dimensions: 4'9" x 7'4"
Area: 34 sq. ft
Counted as living area: Yes

Heated: Yes
Finished: Yes
Enclosed: Yes
Contiguous: Yes
Permitted: Yes
Wet space: No
Addition: No
Conversion: No

8 Floor 1 - Living Room



Dimensions: 13'1" x 14'6"
Area: 190 sq. ft
Counted as living area: Yes

Heated: Yes
Finished: Yes
Enclosed: Yes
Contiguous: Yes
Permitted: Yes
Wet space: No
Addition: No
Conversion: No

9 Floor 2 - Laundry



Dimensions: 5'2" x 4'0"
Area: 21 sq. ft
Counted as living area: Yes

Heated: Yes
Finished: Yes
Enclosed: Yes
Contiguous: Yes
Permitted: Yes
Wet space: No
Addition: No
Conversion: No

10 Floor 2 - Bath



Dimensions: 5'2" x 8'0"
Area: 41 sq. ft
Counted as living area: Yes

Heated: Yes
Finished: Yes
Enclosed: Yes
Contiguous: Yes
Permitted: Yes
Wet space: Yes
Addition: No
Conversion: No

11 Floor 2 - Bedroom



Dimensions: 9'10" x 9'8"
Area: 95 sq. ft
Counted as living area: Yes

Heated: Yes
Finished: Yes
Enclosed: Yes
Contiguous: Yes
Permitted: Yes
Wet space: No
Addition: No
Conversion: No

12 Floor 2 - Primary Bedroom



Dimensions: 13'6" x 22'2"
Area: 298 sq. ft
Counted as living area: Yes

Heated: Yes
Finished: Yes
Enclosed: Yes
Contiguous: Yes
Permitted: Yes
Wet space: No
Addition: No
Conversion: No

13 Floor 2 - Bath



Dimensions: 4'9" x 13'9"
Area: 66 sq. ft
Counted as living area: Yes

Heated: Yes
Finished: Yes
Enclosed: Yes
Contiguous: Yes
Permitted: Yes
Wet space: Yes
Addition: No
Conversion: No

14 Floor 2 - Hall



Dimensions: 8'0" x 14'11"
Area: 119 sq. ft
Counted as living area: Yes

Heated: Yes
Finished: Yes
Enclosed: Yes
Contiguous: Yes
Permitted: Yes
Wet space: No
Addition: No
Conversion: No

5330 Spalding Place, Frederick, Weld County, Colorado, United States, 80504

15 Floor 2 - Bedroom



Dimensions: 13'1" x 10'6"
Area: 138 sq. ft
Counted as living area: Yes

Heated: Yes
Finished: Yes
Enclosed: Yes
Contiguous: Yes
Permitted: Yes
Wet space: No
Addition: No
Conversion: No

16 Floor 2 - W.I.C.



Dimensions: 4'9" x 7'4"
Area: 35 sq. ft
Counted as living area: Yes

Heated: Yes
Finished: Yes
Enclosed: Yes
Contiguous: Yes
Permitted: Yes
Wet space: No
Addition: No
Conversion: No