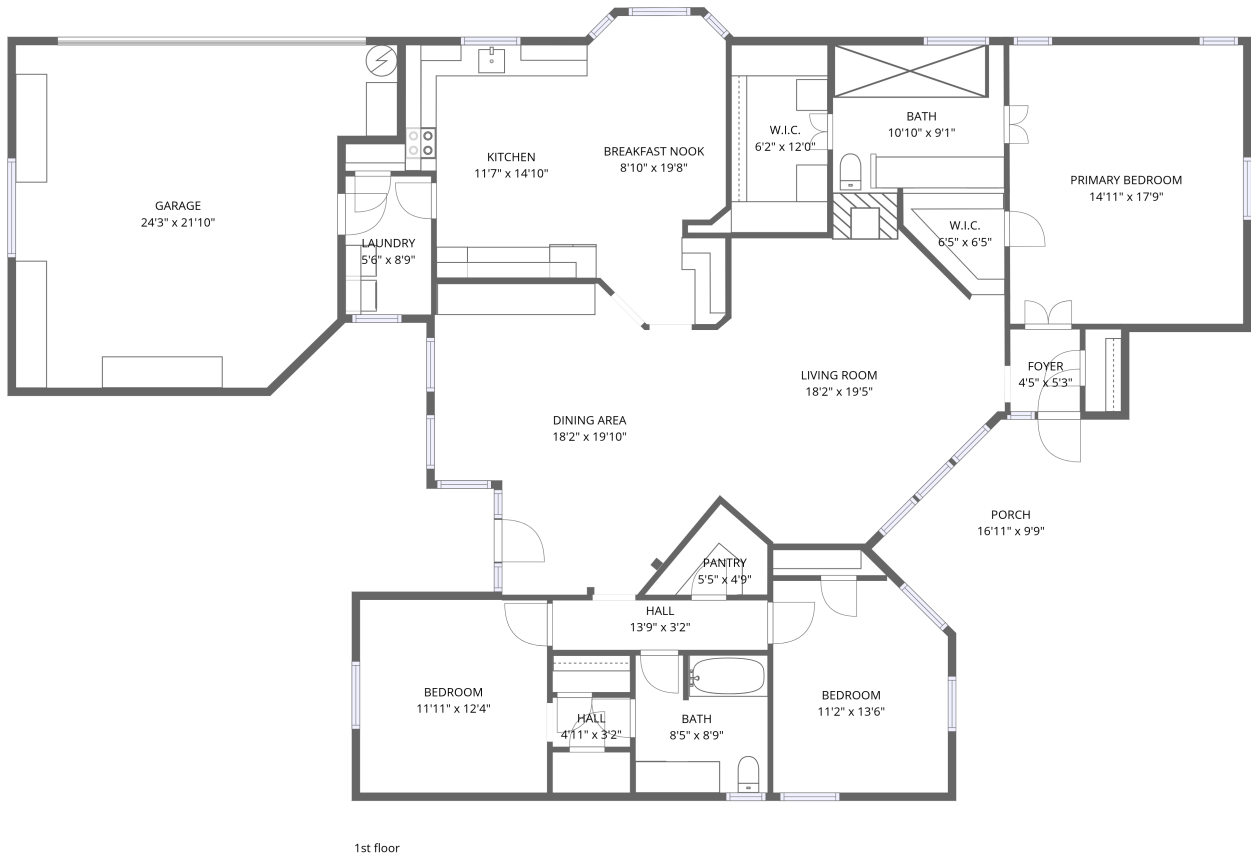


# Home data report

## 121 Daisey Ln, Justin, TX, US



**Total Area: 2035 sq. ft**

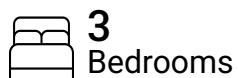
1st Floor: 2035 sq. ft

Excluded: Porch 143 sq. ft, Garage 460 sq. ft, Walls: 151 sq. ft

### Property summary



**1** Floors



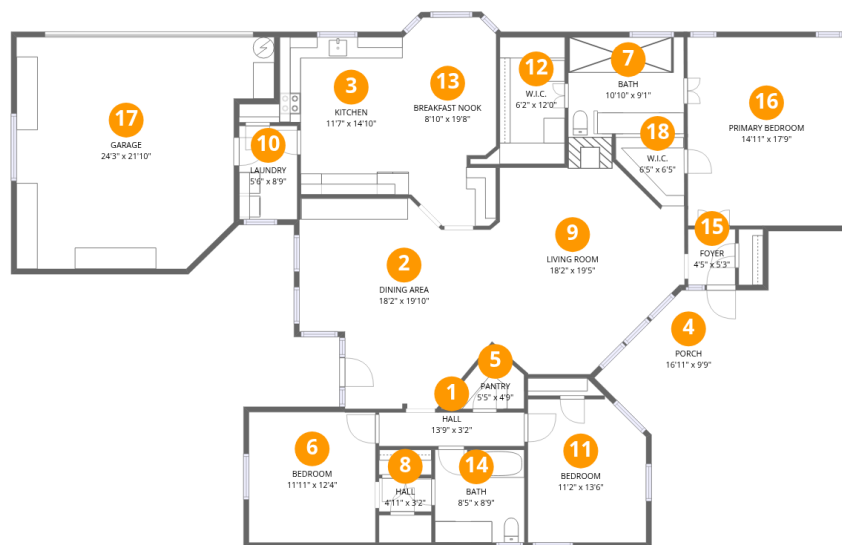
**3** Bedrooms



**2** Bathrooms



**1** Garages



## Room dimensions

Floor 1

Total:2035sqft Excluded: 603sqft

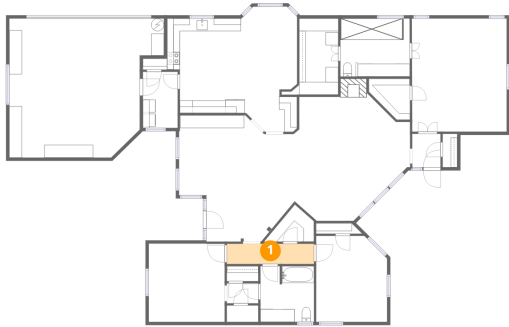
#		Dimensions	sqft	Counted as living area
1	Hall	13'9" x 3'2"	44 sq. ft	Yes
2	Dining Area	18'2" x 19'10"	361 sq. ft	Yes
3	Kitchen	11'7" x 14'10"	172 sq. ft	Yes
4	Porch	16'11" x 9'9"	166 sq. ft	No
5	Pantry	5'5" x 4'9"	26 sq. ft	Yes
6	Bedroom	11'11" x 12'4"	147 sq. ft	Yes
7	Bath	10'10" x 9'1"	99 sq. ft	Yes
8	Hall	4'11" x 3'2"	16 sq. ft	Yes
9	Living Room	18'2" x 19'5"	352 sq. ft	Yes
10	Laundry	5'6" x 8'9"	48 sq. ft	Yes
11	Bedroom	11'2" x 13'6"	151 sq. ft	Yes

Home data report

121 Daisey Ln,Justin,TX,US

#		Dimensions	sqft	Counted as living area
12	W.I.C.	6'2" x 12'0"	73 sq. ft	Yes
13	Breakfast Nook	8'10" x 19'8"	173 sq. ft	Yes
14	Bath	8'5" x 8'9"	74 sq. ft	Yes
15	Foyer	4'5" x 5'3"	23 sq. ft	Yes
16	Primary Bedroom	14'11" x 17'9"	264 sq. ft	Yes
17	Garage	24'3" x 21'10"	529 sq. ft	No
18	W.I.C.	6'5" x 6'5"	42 sq. ft	Yes

## 1 Floor 1 - Hall



Dimensions: 13'9" x 3'2"  
Area: 44 sq. ft  
Counted as living area: Yes

Heated: Yes  
Finished: Yes  
Enclosed: Yes  
Contiguous: Yes  
Permitted: Yes  
Wet space: No  
Addition: No  
Conversion: No

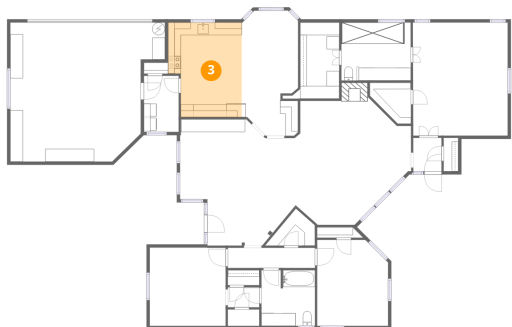
## 2 Floor 1 - Dining Area



Dimensions: 18'2" x 19'10"  
Area: 361 sq. ft  
Counted as living area: Yes

Heated: Yes  
Finished: Yes  
Enclosed: Yes  
Contiguous: Yes  
Permitted: Yes  
Wet space: No  
Addition: No  
Conversion: No

### 3 Floor 1 - Kitchen



Dimensions: 11'7" x 14'10"  
Area: 172 sq. ft  
Counted as living area: Yes

Heated: Yes  
Finished: Yes  
Enclosed: Yes  
Contiguous: Yes  
Permitted: Yes  
Wet space: No  
Addition: No  
Conversion: No

### 4 Floor 1 - Porch



Dimensions: 16'11" x 9'9"  
Area: 166 sq. ft  
Counted as living area: No

Heated: No  
Finished: No  
Enclosed: No  
Contiguous: Yes  
Permitted: Yes  
Wet space: No  
Addition: No  
Conversion: No

### 5 Floor 1 - Pantry



Dimensions: 5'5" x 4'9"  
Area: 26 sq. ft  
Counted as living area: Yes

Heated: Yes  
Finished: Yes  
Enclosed: Yes  
Contiguous: Yes  
Permitted: Yes  
Wet space: No  
Addition: No  
Conversion: No

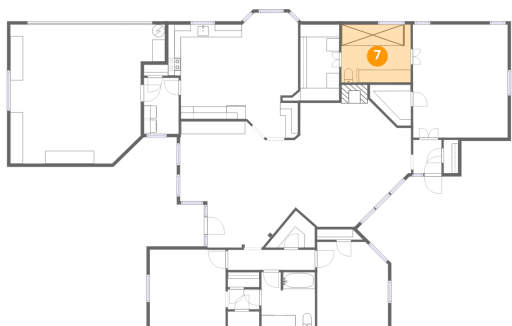
### 6 Floor 1 - Bedroom



Dimensions: 11'11" x 12'4"  
Area: 147 sq. ft  
Counted as living area: Yes

Heated: Yes  
Finished: Yes  
Enclosed: Yes  
Contiguous: Yes  
Permitted: Yes  
Wet space: No  
Addition: No  
Conversion: No

### 7 Floor 1 - Bath



Dimensions: 10'10" x 9'1"  
Area: 99 sq. ft  
Counted as living area: Yes

Heated: Yes  
Finished: Yes  
Enclosed: Yes  
Contiguous: Yes  
Permitted: Yes  
Wet space: Yes  
Addition: No  
Conversion: No

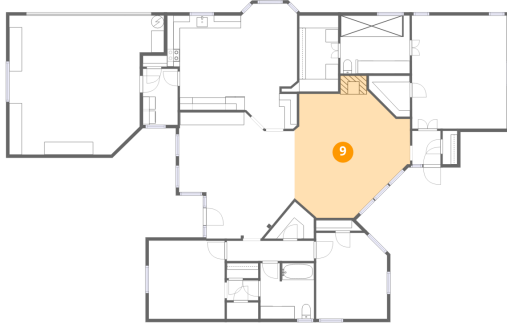
### 8 Floor 1 - Hall



Dimensions: 4'11" x 3'2"  
Area: 16 sq. ft  
Counted as living area: Yes

Heated: Yes  
Finished: Yes  
Enclosed: Yes  
Contiguous: Yes  
Permitted: Yes  
Wet space: No  
Addition: No  
Conversion: No

## 9 Floor 1 - Living Room



Dimensions: 18'2" x 19'5"  
Area: 352 sq. ft  
Counted as living area: Yes

Heated: Yes  
Finished: Yes  
Enclosed: Yes  
Contiguous: Yes  
Permitted: Yes  
Wet space: No  
Addition: No  
Conversion: No

## 10 Floor 1 - Laundry



Dimensions: 5'6" x 8'9"  
Area: 48 sq. ft  
Counted as living area: Yes

Heated: Yes  
Finished: Yes  
Enclosed: Yes  
Contiguous: Yes  
Permitted: Yes  
Wet space: No  
Addition: No  
Conversion: No

## 11 Floor 1 - Bedroom



Dimensions: 11'2" x 13'6"  
Area: 151 sq. ft  
Counted as living area: Yes

Heated: Yes  
Finished: Yes  
Enclosed: Yes  
Contiguous: Yes  
Permitted: Yes  
Wet space: No  
Addition: No  
Conversion: No

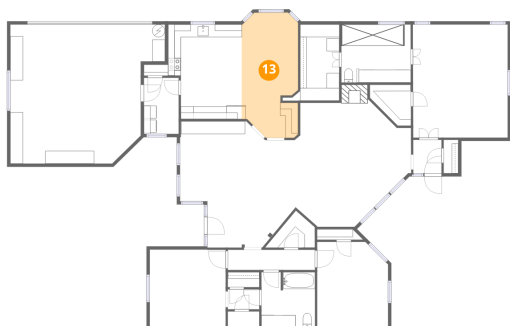
**12** Floor 1 - W.I.C.



Dimensions: 6'2" x 12'0"  
Area: 73 sq. ft  
Counted as living area: Yes

Heated: Yes  
Finished: Yes  
Enclosed: Yes  
Contiguous: Yes  
Permitted: Yes  
Wet space: No  
Addition: No  
Conversion: No

**13** Floor 1 - Breakfast Nook



Dimensions: 8'10" x 19'8"  
Area: 173 sq. ft  
Counted as living area: Yes

Heated: Yes  
Finished: Yes  
Enclosed: Yes  
Contiguous: Yes  
Permitted: Yes  
Wet space: No  
Addition: No  
Conversion: No

**14** Floor 1 - Bath



Dimensions: 8'5" x 8'9"  
Area: 74 sq. ft  
Counted as living area: Yes

Heated: Yes  
Finished: Yes  
Enclosed: Yes  
Contiguous: Yes  
Permitted: Yes  
Wet space: Yes  
Addition: No  
Conversion: No

### 15 Floor 1 - Foyer



Dimensions: 4'5" x 5'3"  
Area: 23 sq. ft  
Counted as living area: Yes

Heated: Yes  
Finished: Yes  
Enclosed: Yes  
Contiguous: Yes  
Permitted: Yes  
Wet space: No  
Addition: No  
Conversion: No

### 16 Floor 1 - Primary Bedroom



Dimensions: 14'11" x 17'9"  
Area: 264 sq. ft  
Counted as living area: Yes

Heated: Yes  
Finished: Yes  
Enclosed: Yes  
Contiguous: Yes  
Permitted: Yes  
Wet space: No  
Addition: No  
Conversion: No

### 17 Floor 1 - Garage



Dimensions: 24'3" x 21'10"  
Area: 529 sq. ft  
Counted as living area: No

Heated: No  
Finished: No  
Enclosed: Yes  
Contiguous: Yes  
Permitted: Yes  
Wet space: No  
Addition: No  
Conversion: No

**18** Floor 1 - W.I.C.

---



**Dimensions:** 6'5" x 6'5"  
**Area:** 42 sq. ft  
**Counted as living area:** Yes

**Heated:** Yes  
**Finished:** Yes  
**Enclosed:** Yes  
**Contiguous:** Yes  
**Permitted:** Yes  
**Wet space:** No  
**Addition:** No  
**Conversion:** No