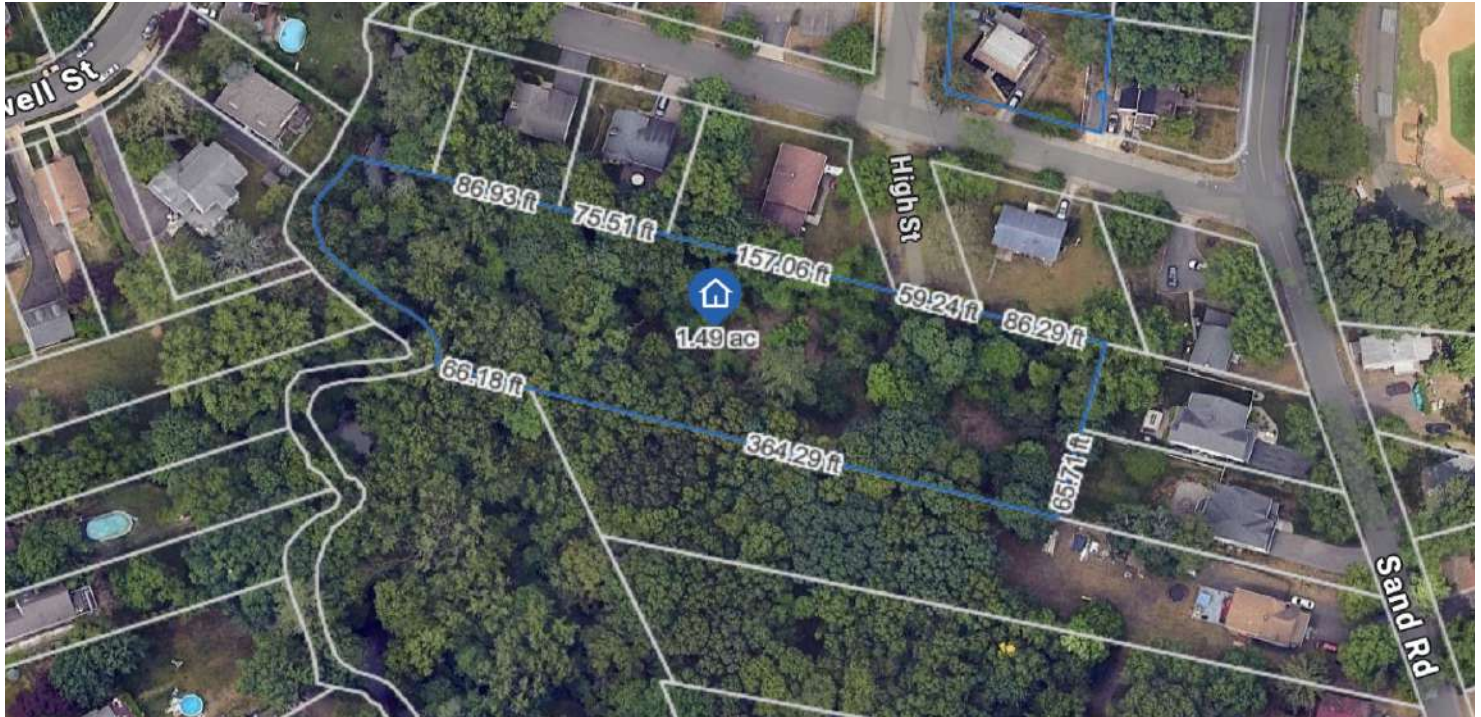


LAND FOR SALE



NJ LUXURY SUBDIVISION FOR TWO 30K SF LOTS

1 High Street, Westwood, NJ 07675



PROPERTY DESCRIPTION

Prime residential development site located on a private dead-end street in Westwood, NJ, offering a rare opportunity for a virtually as-of-right subdivision into two luxury single-family homesites. The property spans approximately 60,000 square feet total, with the potential to create two expansive lots of roughly 30,000 SF each, ideal for custom home construction. Surrounded by established residential neighborhoods and strong Bergen County demographics, the site presents an attractive opportunity for builders, developers, or end users seeking privacy, scale, and long-term value in a highly desirable market.

PROPERTY HIGHLIGHTS

- Virtually as-of-right subdivision potential
- Approx. 60,000 SF total lot size
- Future two luxury single-family homesites
- Ideal for custom home builders or developers
- Rare large-lot opportunity in Westwood, NJ

OFFERING SUMMARY

Sale Price:	\$649,999
Lot Size:	1.49 Acres

DEMOGRAPHICS	0.3 MILES	0.5 MILES	1 MILE
Total Households	216	1,421	5,358
Total Population	591	3,547	14,220
Average HH Income	\$182,110	\$178,481	\$186,566

We obtained the information above from sources we believe to be reliable. However, we have not verified its accuracy and make no guarantee, warranty or representation about it. It is submitted subject to the possibility of errors, omissions, change of price, rental or other conditions, prior sale, lease or financing, or withdrawal without notice. We include projections, opinions, assumptions or estimates for example only, and they may not represent current or future performance of the property. You and your tax and legal advisors should conduct your own investigation of the property and transaction.

BRUCE ELIA JR.
Managing Director | Fort Lee
O: 201.917.5884 X701
C: 201.315.1223
operations@ergteam.com
NJ #0893523

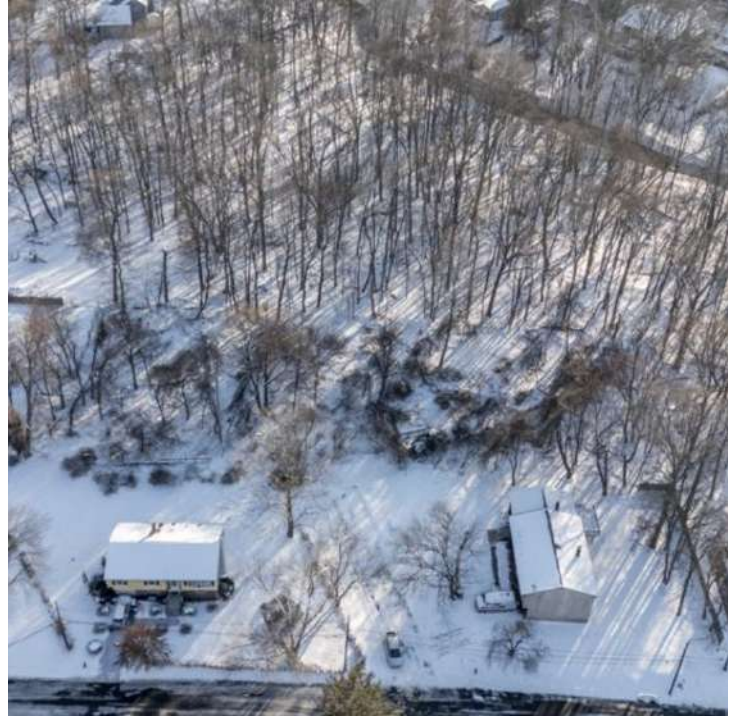
KW COMMERCIAL
2200 Fletcher Ave Suite 500
Fort Lee, NJ 07024

Each Office Independently Owned and Operated ERGTeam.kw.com

LAND FOR SALE

NJ LUXURY SUBDIVISION FOR TWO 30K SF LOTS

1 High Street, Westwood, NJ 07675



We obtained the information above from sources we believe to be reliable. However, we have not verified its accuracy and make no guarantee, warranty or representation about it. It is submitted subject to the possibility of errors, omissions, change of price, rental or other conditions, prior sale, lease or financing, or withdrawal without notice. We include projections, opinions, assumptions or estimates for example only, and they may not represent current or future performance of the property. You and your tax and legal advisors should conduct your own investigation of the property and transaction.

BRUCE ELIA JR.
Managing Director | Fort Lee
O: 201.917.5884 X701
C: 201.315.1223
operations@ergteam.com
NJ #0893523

KW COMMERCIAL
2200 Fletcher Ave Suite 500
Fort Lee, NJ 07024

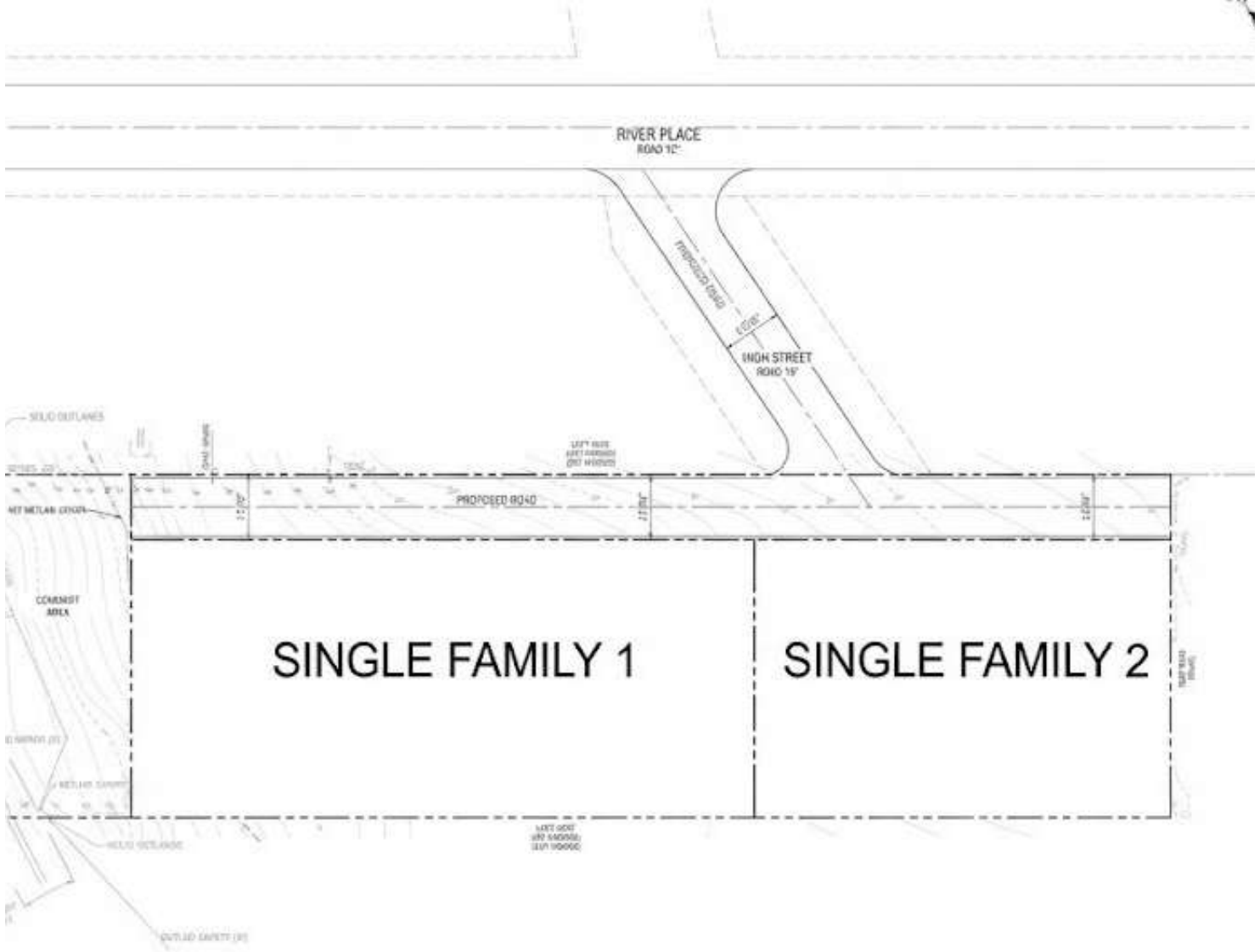
Each Office Independently Owned and Operated ERGTeam.kw.com



SITE PLAN

1 High Street, Westwood, NJ 07675

AREA AND ZONING REGULATIONS							
DISTRICT	ZONING	MINIMUM LOT AREA (SQ FT)	MINIMUM FRONT SETBACK (FT)	MINIMUM SIDE/REAR SETBACK (FT)	MINIMUM FRONT YARD SETBACK (FT)	MINIMUM BUILDING FOOTPRINT	
						STORIES	FEET
23	RESIDENTIAL	400	25	20	45	34	24



PROJECT TITLE	
01	SITE PLAN

We obtained the information above from sources we believe to be reliable. However, we have not verified its accuracy and make no guarantee, warranty or representation about it. It is submitted subject to the possibility of errors, omissions, change of price, rental or other conditions, prior sale, lease or financing, or withdrawal without notice. We include projections, opinions, assumptions or estimates for example only, and they may not represent current or future performance of the property. You and your tax and legal advisors should conduct your own investigation of the property and transaction.

BRUCE ELIA JR.
 Managing Director | Fort Lee
 O: 201.917.5884 X701
 C: 201.315.1223
 operations@ergteam.com
 NJ #0893523

KW COMMERCIAL
 2200 Fletcher Ave Suite 500
 Fort Lee, NJ 07024

1 High Street, Westwood, NJ 07675



We obtained the information above from sources we believe to be reliable. However, we have not verified its accuracy and make no guarantee, warranty or representation about it. It is submitted subject to the possibility of errors, omissions, change of price, rental or other conditions, prior sale, lease or financing, or withdrawal without notice. We include projections, opinions, assumptions or estimates for example only, and they may not represent current or future performance of the property. You and your tax and legal advisors should conduct your own investigation of the property and transaction.

BRUCE ELIA JR.
Managing Director | Fort Lee
O: 201.917.5884 X701
C: 201.315.1223
operations@ergteam.com
NJ #0893523

KW COMMERCIAL
2200 Fletcher Ave Suite 500
Fort Lee, NJ 07024

SALES COMPARABLE-1.36M(2025)

1 High Street, Westwood, NJ 07675

Property Detail Report

PropertyRecords

For property located at
75 Bergen St, Westwood, NJ 07675

APN: 67-01407-0000-00011-01
Generation date: 02/17/2026

Owner(s) Information

Owners(s) name	Dizon, Daniel Sebastian & Chesca M	Owner For	2 months
Mailing Address	75 Bergen St	Absentee	No
City, State Zip	Westwood, NJ 07675	Corporate Owned	No

Location Information

County	Bergen	Lot Acres	0.172	Class 4 Code	
Municipality	Westwood Borough	Lot Sq Ft	7,492.32	Building Class	21
Block / Lot / Qual	1407 / 11.01 / --	Land Use	Residential	Building Desc	
Additional Lots	--	Land Desc	75X100	Building Sq.Ft.	2872
Census Code	340030591002013	Zoning	R1	Year Constructed	2022

Tax Information

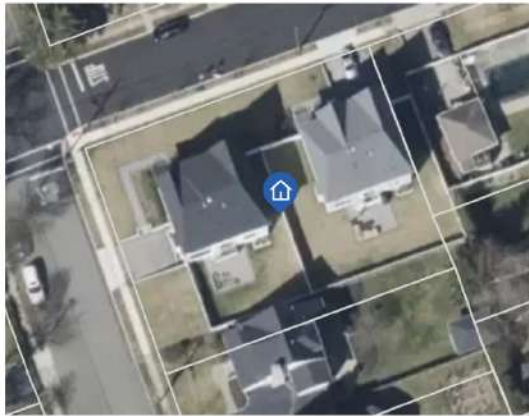
Assessed Year	2025	Land Value	\$331,900	Tax Exemption	0
Tax Year	2025	Improved Value	\$1,054,000	Deductions (Amount)	--
Calculated Tax	\$29,963.16	Total Assessed Value	\$1,385,900	Tax Rate (2025)	2.162
Special Tax Codes	--			Tax Ratio (2025)	91.19

Last Market Sale

Sale / Rec Date	07/06/2022 - 08/09/2022	Buyer Name	GUIDI, LISA	Seller Name	ROCK SOLID BUILT LLC
Sale Price	\$1,360,000	Buyer Street	75 BERGEN ST	Seller Street	114 ESSEX ST #302
Price / Sq.Ft.	\$473.54	Buyer City, State	WESTWOOD, NJ	Seller City, State	ROCHELLE PARK, NJ
Book / Page	4769 / 523				
Assessor Code	007				

FEMA Flood

Flood Zone	Flood Risk	Panel #	Effective Date	Parcel Coverage	SFHA
X	AREA OF MINIMAL FLOOD HAZARD	34003C0182H	08/28/2019	0.35 (100%)	No



Disclaimer: The property information displayed here is obtained from various public records. NJPropertyRecords, LLC makes no guarantees on the validity of the data presented. Although deemed reliable, information may not be accurate. Information should be independently confirmed and you use the information displayed here at your own risk.

We obtained the information above from sources we believe to be reliable. However, we have not verified its accuracy and make no guarantee, warranty or representation about it. It is submitted subject to the possibility of errors, omissions, change of price, rental or other conditions, prior sale, lease or financing, or withdrawal without notice. We include projections, opinions, assumptions or estimates for example only, and they may not represent current or future performance of the property. You and your tax and legal advisors should conduct your own investigation of the property and transaction.

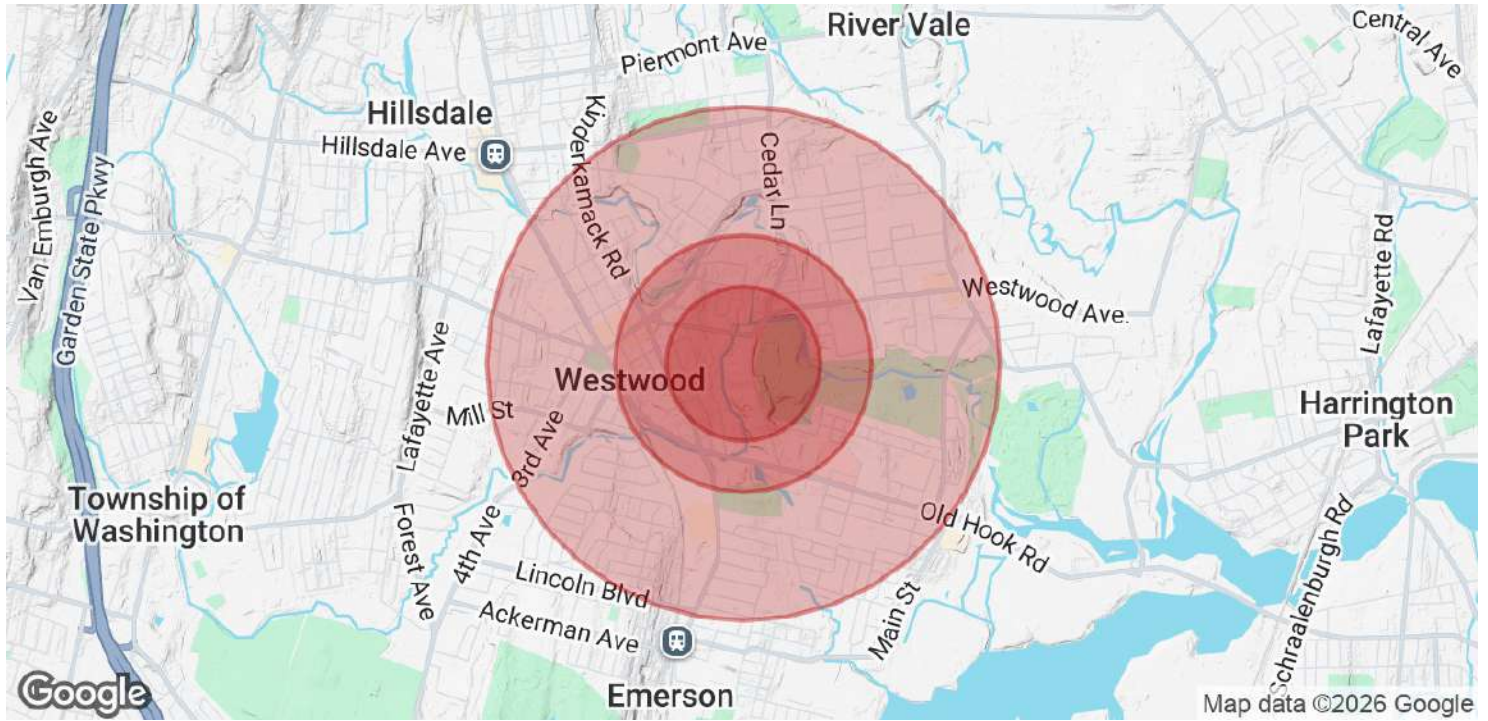
BRUCE ELIA JR.
Managing Director | Fort Lee
O: 201.917.5884 X701
C: 201.315.1223
operations@ergteam.com
NJ #0893523

KW COMMERCIAL
2200 Fletcher Ave Suite 500
Fort Lee, NJ 07024

LAND FOR SALE



1 High Street, Westwood, NJ 07675



POPULATION	0.3 MILES	0.5 MILES	1 MILE
Total Population	591	3,547	14,220
Average Age	42	42	43
Average Age (Male)	41	41	41
Average Age (Female)	43	43	44

HOUSEHOLDS & INCOME	0.3 MILES	0.5 MILES	1 MILE
Total Households	216	1,421	5,358
# of Persons per HH	2.7	2.5	2.7
Average HH Income	\$182,110	\$178,481	\$186,566
Average House Value	\$627,975	\$629,512	\$669,139

Demographics data derived from AlphaMap

We obtained the information above from sources we believe to be reliable. However, we have not verified its accuracy and make no guarantee, warranty or representation about it. It is submitted subject to the possibility of errors, omissions, change of price, rental or other conditions, prior sale, lease or financing, or withdrawal without notice. We include projections, opinions, assumptions or estimates for example only, and they may not represent current or future performance of the property. You and your tax and legal advisors should conduct your own investigation of the property and transaction.

BRUCE ELIA JR.
 Managing Director | Fort Lee
 O: 201.917.5884 X701
 C: 201.315.1223
 operations@ergteam.com
 NJ #0893523

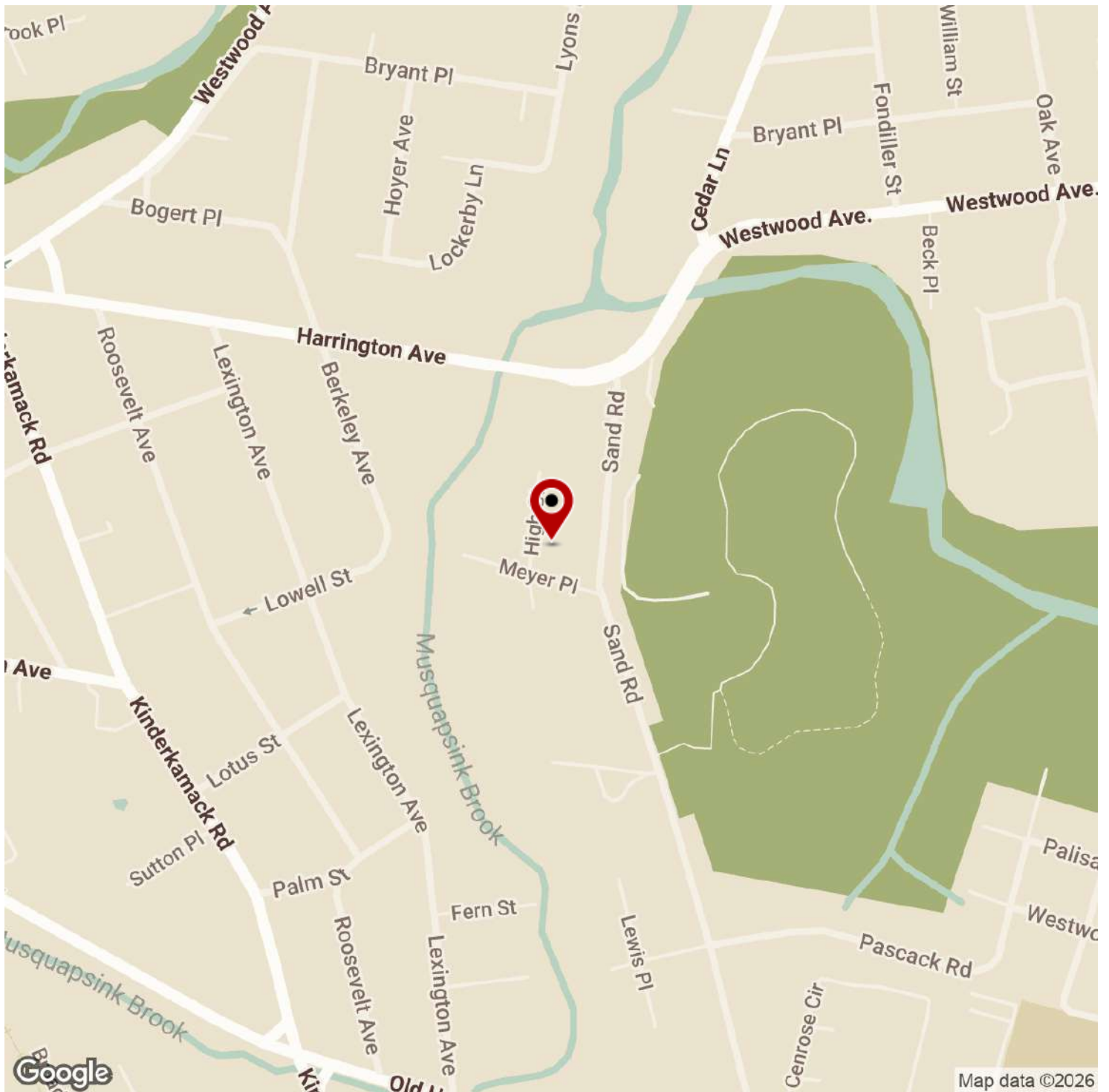
KW COMMERCIAL
 2200 Fletcher Ave Suite 500
 Fort Lee, NJ 07024

Each Office Independently Owned and Operated ERGTeam.kw.com

LAND FOR SALE



1 High Street, Westwood, NJ 07675



We obtained the information above from sources we believe to be reliable. However, we have not verified its accuracy and make no guarantee, warranty or representation about it. It is submitted subject to the possibility of errors, omissions, change of price, rental or other conditions, prior sale, lease or financing, or withdrawal without notice. We include projections, opinions, assumptions or estimates for example only, and they may not represent current or future performance of the property. You and your tax and legal advisors should conduct your own investigation of the property and transaction.

BRUCE ELIA JR.
Managing Director | Fort Lee
O: 201.917.5884 X701
C: 201.315.1223
operations@ergteam.com
NJ #0893523

KW COMMERCIAL
2200 Fletcher Ave Suite 500
Fort Lee, NJ 07024

Each Office Independently Owned and Operated ERGTeam.kw.com