

Home report

2644 Willowlawn Street, Southwoods, Cave Spring, Roanoke,
Roanoke County, Virginia, United States, 24018



Total Area: 3838 sq. ft

Floor 1: 1075 sq. ft, Floor 2: 2763 sq. ft


Excluded: Room 97 sq. ft, Basement 529 sq. ft, Garage 805 sq. ft, Storage 103 sq. ft, Utility 70 sq. ft, Porch 228 sq. ft, Deck 284 sq. ft, Walls: 309 sq. ft

Property summary



Home report

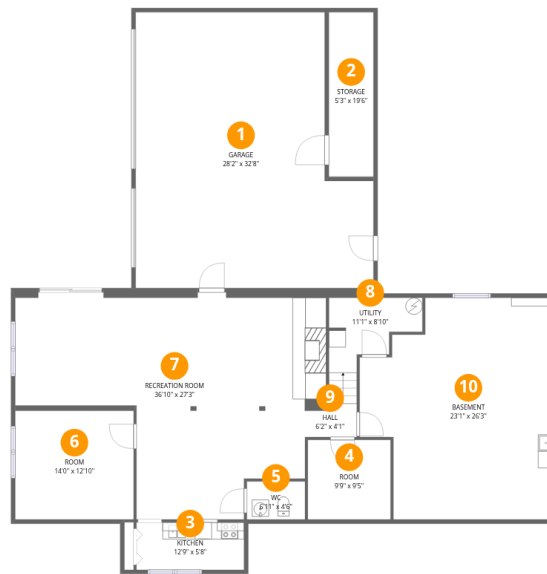
**2644 Willowlawn Street, Southwoods, Cave Spring, Roanoke,
Roanoke County, Virginia, United States, 24018**

 **1**
Half baths

 **1**
Garages

Home report

2644 Willowlawn Street, Southwoods, Cave Spring, Roanoke, Roanoke County, Virginia, United States, 24018



Room dimensions

Floor 1

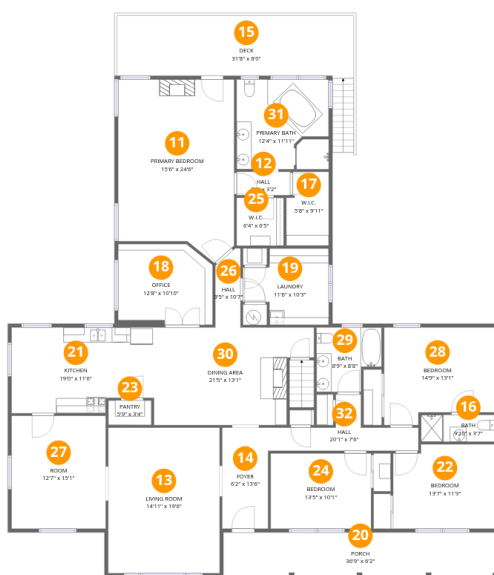
Total:1075sqft

Excluded: 1604sqft

#		Max Dimensions	sqft	Included
1	Garage	28'2" x 32'8"	805 sq. ft	No
2	Storage	5'3" x 19'6"	103 sq. ft	No
3	Kitchen	12'9" x 5'8"	72 sq. ft	Yes
4	Room	9'9" x 9'5"	92 sq. ft	No
5	WC	6'11" x 4'6"	31 sq. ft	Yes
6	Room	14'0" x 12'10"	181 sq. ft	Yes
7	Recreation Room	36'10" x 27'3"	711 sq. ft	Yes
8	Utility	11'1" x 8'10"	70 sq. ft	No
9	Hall	6'2" x 4'1"	34 sq. ft	Yes
10	Basement	23'1" x 26'3"	524 sq. ft	No

Home report

2644 Willowlawn Street, Southwoods, Cave Spring, Roanoke, Roanoke County, Virginia, United States, 24018



Room dimensions

Floor 2

Total:2763sqft

Excluded: 512sqft

#		Max Dimensions	sqft	Included
11	Primary Bedroom	15'6" x 24'6"	346 sq. ft	Yes
12	Hall	7'2" x 3'2"	23 sq. ft	Yes
13	Living Room	14'11" x 19'6"	291 sq. ft	Yes
14	Foyer	6'2" x 13'6"	83 sq. ft	Yes
15	Deck	31'8" x 8'0"	284 sq. ft	No
16	Bath	9'10" x 3'7"	35 sq. ft	Yes
17	W.I.C.	5'8" x 9'11"	53 sq. ft	Yes
18	Office	12'8" x 10'10"	128 sq. ft	Yes
19	Laundry	11'6" x 10'3"	98 sq. ft	Yes
20	Porch	36'9" x 6'2"	228 sq. ft	No
21	Kitchen	19'0" x 11'6"	205 sq. ft	Yes

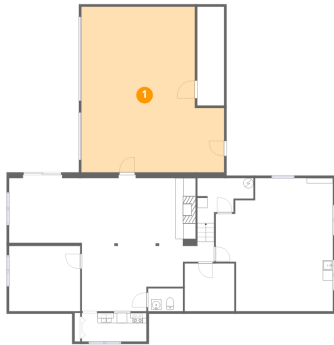
Home report

**2644 Willowlawn Street, Southwoods, Cave Spring, Roanoke,
Roanoke County, Virginia, United States, 24018**

#		Max Dimensions	sqft	Included
22	Bedroom	13'7" x 11'3"	149 sq. ft	Yes
23	Pantry	5'9" x 3'4"	19 sq. ft	Yes
24	Bedroom	13'5" x 10'1"	135 sq. ft	Yes
25	W.I.C.	6'4" x 6'5"	41 sq. ft	Yes
26	Hall	3'5" x 10'7"	33 sq. ft	Yes
27	Room	12'7" x 15'1"	190 sq. ft	Yes
28	Bedroom	14'9" x 13'1"	175 sq. ft	Yes
29	Bath	8'9" x 8'8"	66 sq. ft	Yes
30	Dining Area	21'5" x 13'1"	247 sq. ft	Yes
31	Primary Bath	12'4" x 11'11"	146 sq. ft	Yes
32	Hall	20'1" x 7'6"	78 sq. ft	Yes

2644 Willowlawn Street, Southwoods, Cave Spring, Roanoke,
Roanoke County, Virginia, United States, 24018

1 Floor 1 - Garage



Max Dimensions: 28'2" x
32'8"
Calculated Area: 805 sq. ft
Included: No

Heated: No
Finished: No
Enclosed: Yes
Contiguous:
Yes
Permitted: Yes
Wet space: No
Addition: No
Conversion: No

2 Floor 1 - Storage

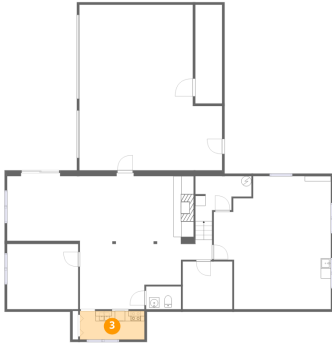


Max Dimensions: 5'3" x
19'6"
Calculated Area: 103 sq. ft
Included: No

Heated: No
Finished: No
Enclosed: No
Contiguous:
Yes
Permitted: Yes
Wet space: No
Addition: No
Conversion: No

2644 Willowlawn Street, Southwoods, Cave Spring, Roanoke,
Roanoke County, Virginia, United States, 24018

3 Floor 1 - Kitchen



Max Dimensions: 12'9" x 5'8"
Calculated Area: 72 sq. ft
Included: Yes

Heated: Yes
Finished: Yes
Enclosed: Yes
Contiguous: Yes
Permitted: Yes
Wet space: No
Addition: No
Conversion: No

4 Floor 1 - Room



Max Dimensions: 9'9" x 9'5"
Calculated Area: 92 sq. ft
Included: No

Heated: Yes
Finished: No
Enclosed: Yes
Contiguous: Yes
Permitted: Yes
Wet space: No
Addition: No
Conversion: No

5 Floor 1 - WC

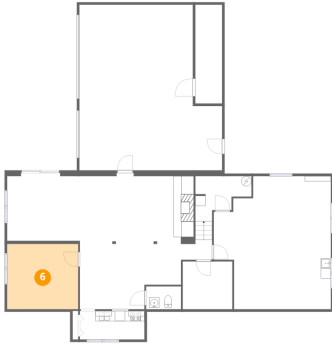


Max Dimensions: 6'11" x 4'6"
Calculated Area: 31 sq. ft
Included: Yes

Heated: Yes
Finished: Yes
Enclosed: Yes
Contiguous: Yes
Permitted: Yes
Wet space: Yes
Addition: No
Conversion: No

2644 Willowlawn Street, Southwoods, Cave Spring, Roanoke, Roanoke County, Virginia, United States, 24018

6 Floor 1 - Room



Max Dimensions: 14'0" x 12'10"
Calculated Area: 181 sq. ft
Included: Yes

Heated: Yes
Finished: Yes
Enclosed: Yes
Contiguous: Yes
Permitted: Yes
Wet space: No
Addition: No
Conversion: No

7 Floor 1 - Recreation Room



Max Dimensions: 36'10" x 27'3"
Calculated Area: 711 sq. ft
Included: Yes

Heated: Yes
Finished: Yes
Enclosed: Yes
Contiguous: Yes
Permitted: Yes
Wet space: No
Addition: No
Conversion: No

8 Floor 1 - Utility



Max Dimensions: 11'1" x 8'10"
Calculated Area: 70 sq. ft
Included: No

Heated: Yes
Finished: No
Enclosed: Yes
Contiguous: Yes
Permitted: Yes
Wet space: No
Addition: No
Conversion: No

2644 Willowlawn Street, Southwoods, Cave Spring, Roanoke, Roanoke County, Virginia, United States, 24018

9 Floor 1 - Hall



Max Dimensions: 6'2" x 4'1"
Calculated Area: 34 sq. ft
Included: Yes

Heated: Yes
Finished: Yes
Enclosed: Yes
Contiguous: Yes
Permitted: Yes
Wet space: No
Addition: No
Conversion: No

10 Floor 1 - Basement



Max Dimensions: 23'1" x 26'3"
Calculated Area: 524 sq. ft
Included: No

Heated: Yes
Finished: No
Enclosed: Yes
Contiguous: Yes
Permitted: Yes
Wet space: No
Addition: No
Conversion: No

11 Floor 2 - Primary Bedroom



Max Dimensions: 15'6" x 24'6"
Calculated Area: 346 sq. ft
Included: Yes

Heated: Yes
Finished: Yes
Enclosed: Yes
Contiguous: Yes
Permitted: Yes
Wet space: No
Addition: No
Conversion: No

2644 Willowlawn Street, Southwoods, Cave Spring, Roanoke,
Roanoke County, Virginia, United States, 24018

12 Floor 2 - Hall



Max Dimensions: 7'2" x 3'2"
Calculated Area: 23 sq. ft
Included: Yes

Heated: Yes
Finished: Yes
Enclosed: Yes
Contiguous: Yes
Permitted: Yes
Wet space: No
Addition: No
Conversion: No

13 Floor 2 - Living Room



Max Dimensions: 14'11" x 19'6"
Calculated Area: 291 sq. ft
Included: Yes

Heated: Yes
Finished: Yes
Enclosed: Yes
Contiguous: Yes
Permitted: Yes
Wet space: No
Addition: No
Conversion: No

14 Floor 2 - Foyer

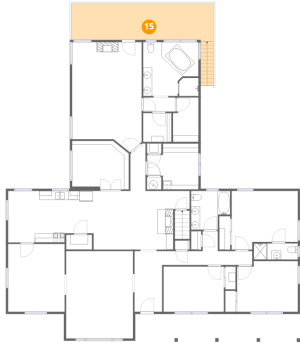


Max Dimensions: 6'2" x 13'6"
Calculated Area: 83 sq. ft
Included: Yes

Heated: Yes
Finished: Yes
Enclosed: Yes
Contiguous: Yes
Permitted: Yes
Wet space: No
Addition: No
Conversion: No

2644 Willowlawn Street, Southwoods, Cave Spring, Roanoke,
Roanoke County, Virginia, United States, 24018

15 Floor 2 - Deck



Max Dimensions: 31'8" x 8'0"
Calculated Area: 284 sq. ft
Included: No

Heated: No
Finished: No
Enclosed: No
Contiguous: Yes
Permitted: Yes
Wet space: No
Addition: No
Conversion: No

16 Floor 2 - Bath



Max Dimensions: 9'10" x 3'7"
Calculated Area: 35 sq. ft
Included: Yes

Heated: Yes
Finished: Yes
Enclosed: Yes
Contiguous: Yes
Permitted: Yes
Wet space: Yes
Addition: No
Conversion: No

17 Floor 2 - W.I.C.



Max Dimensions: 5'8" x 9'11"
Calculated Area: 53 sq. ft
Included: Yes

Heated: Yes
Finished: Yes
Enclosed: Yes
Contiguous: Yes
Permitted: Yes
Wet space: No
Addition: No
Conversion: No

2644 Willowlawn Street, Southwoods, Cave Spring, Roanoke,
Roanoke County, Virginia, United States, 24018

18 Floor 2 - Office



Max Dimensions: 12'8" x 10'10"
Calculated Area: 128 sq. ft
Included: Yes

Heated: Yes
Finished: Yes
Enclosed: Yes
Contiguous: Yes
Permitted: Yes
Wet space: No
Addition: No
Conversion: No

19 Floor 2 - Laundry



Max Dimensions: 11'6" x 10'3"
Calculated Area: 98 sq. ft
Included: Yes

Heated: Yes
Finished: Yes
Enclosed: Yes
Contiguous: Yes
Permitted: Yes
Wet space: No
Addition: No
Conversion: No

20 Floor 2 - Porch

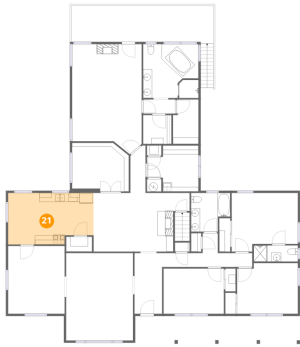


Max Dimensions: 36'9" x 6'2"
Calculated Area: 228 sq. ft
Included: No

Heated: No
Finished: No
Enclosed: No
Contiguous: Yes
Permitted: Yes
Wet space: No
Addition: No
Conversion: No

2644 Willowlawn Street, Southwoods, Cave Spring, Roanoke,
Roanoke County, Virginia, United States, 24018

21 Floor 2 - Kitchen



Max Dimensions: 19'0" x 11'6"
Calculated Area: 205 sq. ft
Included: Yes

Heated: Yes
Finished: Yes
Enclosed: Yes
Contiguous: Yes
Permitted: Yes
Wet space: No
Addition: No
Conversion: No

22 Floor 2 - Bedroom



Max Dimensions: 13'7" x 11'3"
Calculated Area: 149 sq. ft
Included: Yes

Heated: Yes
Finished: Yes
Enclosed: Yes
Contiguous: Yes
Permitted: Yes
Wet space: No
Addition: No
Conversion: No

23 Floor 2 - Pantry



Max Dimensions: 5'9" x 3'4"
Calculated Area: 19 sq. ft
Included: Yes

Heated: Yes
Finished: Yes
Enclosed: Yes
Contiguous: Yes
Permitted: Yes
Wet space: No
Addition: No
Conversion: No

2644 Willowlawn Street, Southwoods, Cave Spring, Roanoke, Roanoke County, Virginia, United States, 24018

24 Floor 2 - Bedroom



Max Dimensions: 13'5" x 10'1"
Calculated Area: 135 sq. ft
Included: Yes

Heated: Yes
Finished: Yes
Enclosed: Yes
Contiguous: Yes
Permitted: Yes
Wet space: No
Addition: No
Conversion: No

25 Floor 2 - W.I.C.



Max Dimensions: 6'4" x 6'5"
Calculated Area: 41 sq. ft
Included: Yes

Heated: Yes
Finished: Yes
Enclosed: Yes
Contiguous: Yes
Permitted: Yes
Wet space: No
Addition: No
Conversion: No

26 Floor 2 - Hall



Max Dimensions: 3'5" x 10'7"
Calculated Area: 33 sq. ft
Included: Yes

Heated: Yes
Finished: Yes
Enclosed: Yes
Contiguous: Yes
Permitted: Yes
Wet space: No
Addition: No
Conversion: No

2644 Willowlawn Street, Southwoods, Cave Spring, Roanoke,
Roanoke County, Virginia, United States, 24018

27 Floor 2 - Room



Max Dimensions: 12'7" x 15'1"
Calculated Area: 190 sq. ft
Included: Yes

Heated: Yes
Finished: Yes
Enclosed: Yes
Contiguous: Yes
Permitted: Yes
Wet space: No
Addition: No
Conversion: No

28 Floor 2 - Bedroom



Max Dimensions: 14'9" x 13'1"
Calculated Area: 175 sq. ft
Included: Yes

Heated: Yes
Finished: Yes
Enclosed: Yes
Contiguous: Yes
Permitted: Yes
Wet space: No
Addition: No
Conversion: No

29 Floor 2 - Bath



Max Dimensions: 8'9" x 8'8"
Calculated Area: 66 sq. ft
Included: Yes

Heated: Yes
Finished: Yes
Enclosed: Yes
Contiguous: Yes
Permitted: Yes
Wet space: Yes
Addition: No
Conversion: No

2644 Willowlawn Street, Southwoods, Cave Spring, Roanoke, Roanoke County, Virginia, United States, 24018

30 Floor 2 - Dining Area



Max Dimensions: 21'5" x 13'1"
Calculated Area: 247 sq. ft
Included: Yes

Heated: Yes
Finished: Yes
Enclosed: Yes
Contiguous: Yes
Permitted: Yes
Wet space: No
Addition: No
Conversion: No

31 Floor 2 - Primary Bath



Max Dimensions: 12'4" x 11'11"
Calculated Area: 146 sq. ft
Included: Yes

Heated: Yes
Finished: Yes
Enclosed: Yes
Contiguous: Yes
Permitted: Yes
Wet space: Yes
Addition: No
Conversion: No

32 Floor 2 - Hall



Max Dimensions: 20'1" x 7'6"
Calculated Area: 78 sq. ft
Included: Yes

Heated: Yes
Finished: Yes
Enclosed: Yes
Contiguous: Yes
Permitted: Yes
Wet space: No
Addition: No
Conversion: No