

Home report

1600 Belford Road, Reno, Washoe County, Nevada, United States, 89509



Total Area: 4119 sq. ft

Floor 1: 1969 sq. ft, Floor 2: 2150 sq. ft

Excluded: Storage 74 sq. ft, Utility 104 sq. ft, Garage 457 sq. ft, Fireplace 21 sq. ft, Walls: 252 sq. ft

Property summary



Home report

1600 Belford Road, Reno, Washoe County, Nevada, United States, 89509



Room dimensions

Floor 1

Total:1969sqft

Excluded: 178sqft

#		Max Dimensions	sqft	Included
1	Recreation Room	14'6" x 26'0"	376 sq. ft	Yes
2	W.I.C.	10'4" x 5'10"	60 sq. ft	Yes
3	Storage	10'4" x 7'3"	74 sq. ft	No
4	Hall	7'9" x 23'1"	127 sq. ft	Yes
5	Den	12'10" x 12'6"	141 sq. ft	Yes
6	Bath	7'3" x 11'6"	70 sq. ft	Yes
7	Primary Bath	17'7" x 14'3"	193 sq. ft	Yes
8	Second Primary Suite	18'5" x 23'0"	386 sq. ft	Yes
9	Wet Bar	5'10" x 14'3"	83 sq. ft	Yes
10	Utility	10'0" x 11'6"	104 sq. ft	No
11	Gym	20'4" x 15'7"	317 sq. ft	Yes

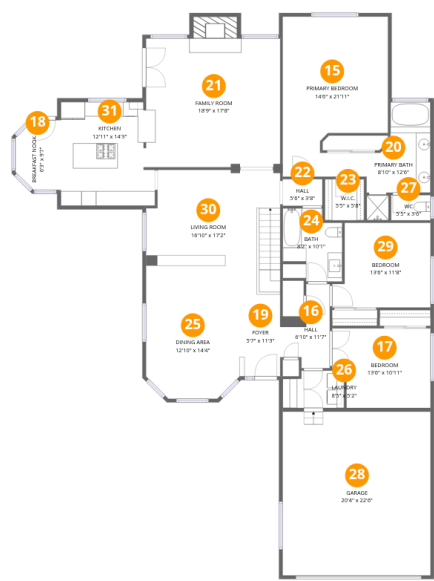
Home report

1600 Belford Road, Reno, Washoe County, Nevada, United States, 89509

#		Max Dimensions	sqft	Included
12	Hall	8'1" x 4'4"	35 sq. ft	Yes
13	WC	5'4" x 3'9"	20 sq. ft	Yes
14	Hall	7'8" x 7'1"	68 sq. ft	Yes

Home report

1600 Belford Road, Reno, Washoe County, Nevada, United States, 89509



Room dimensions

Floor 2

Total:2150sqft

Excluded: 478sqft

#		Max Dimensions	sqft	Included
15	Primary Bedroom	14'6" x 21'11"	284 sq. ft	Yes
16	Hall	6'10" x 11'7"	53 sq. ft	Yes
17	Bedroom	13'6" x 10'11"	137 sq. ft	Yes
18	Breakfast Nook	6'3" x 9'7"	54 sq. ft	Yes
19	Foyer	5'7" x 11'3"	63 sq. ft	Yes
20	Primary Bath	8'10" x 12'6"	99 sq. ft	Yes
21	Family Room	18'9" x 17'8"	348 sq. ft	Yes
22	Hall	5'6" x 3'8"	20 sq. ft	Yes
23	W.I.C.	5'5" x 5'8"	31 sq. ft	Yes
24	Bath	8'2" x 10'1"	74 sq. ft	Yes
25	Dining Area	12'10" x 14'4"	175 sq. ft	Yes

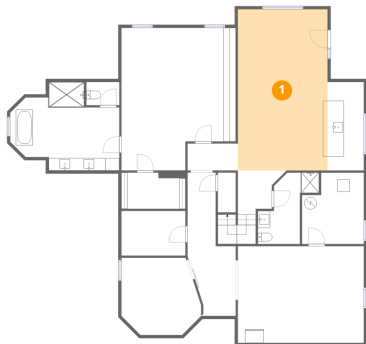
Home report

1600 Belford Road, Reno, Washoe County, Nevada, United States, 89509

#		Max Dimensions	sqft	Included
26	Laundry	8'5" x 5'2"	40 sq. ft	Yes
27	WC	5'5" x 3'6"	19 sq. ft	Yes
28	Garage	20'4" x 22'6"	457 sq. ft	No
29	Bedroom	13'6" x 11'8"	143 sq. ft	Yes
30	Living Room	16'10" x 17'2"	308 sq. ft	Yes
31	Kitchen	12'11" x 14'3"	170 sq. ft	Yes

1600 Belford Road, Reno, Washoe County, Nevada, United States, 89509

1 Floor 1 - Recreation Room



Max Dimensions: 14'6" x 26'0"
Calculated Area: 376 sq. ft
Included: Yes

Heated: Yes
Finished: Yes
Enclosed: Yes
Contiguous: Yes
Permitted: Yes
Wet space: No
Addition: No
Conversion: No

2 Floor 1 - W.I.C.



Max Dimensions: 10'4" x 5'10"
Calculated Area: 60 sq. ft
Included: Yes

Heated: Yes
Finished: Yes
Enclosed: Yes
Contiguous: Yes
Permitted: Yes
Wet space: No
Addition: No
Conversion: No

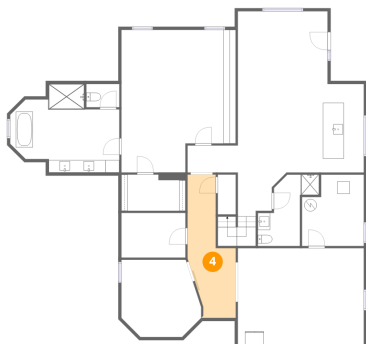
3 Floor 1 - Storage



Max Dimensions: 10'4" x 7'3"
Calculated Area: 74 sq. ft
Included: No

Heated: No
Finished: Yes
Enclosed: No
Contiguous: Yes
Permitted: Yes
Wet space: No
Addition: No
Conversion: No

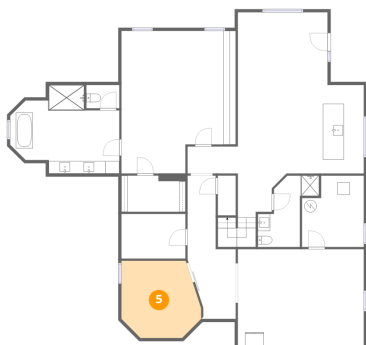
4 Floor 1 - Hall



Max Dimensions: 7'9" x 23'1"
Calculated Area: 127 sq. ft
Included: Yes

Heated: Yes
Finished: Yes
Enclosed: Yes
Contiguous: Yes
Permitted: Yes
Wet space: No
Addition: No
Conversion: No

5 Floor 1 - Den

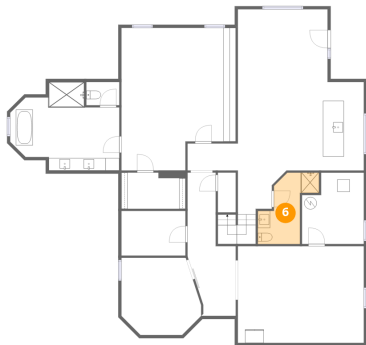


Max Dimensions: 12'10" x 12'6"
Calculated Area: 141 sq. ft
Included: Yes

Heated: Yes
Finished: Yes
Enclosed: Yes
Contiguous: Yes
Permitted: Yes
Wet space: No
Addition: No
Conversion: No

1600 Belford Road, Reno, Washoe County, Nevada, United States, 89509

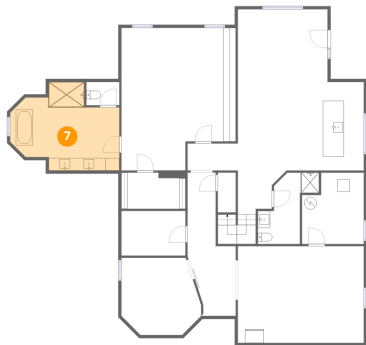
6 Floor 1 - Bath



Max Dimensions: 7'3" x 11'6"
Calculated Area: 70 sq. ft
Included: Yes

Heated: Yes
Finished: Yes
Enclosed: Yes
Contiguous: Yes
Permitted: Yes
Wet space: Yes
Addition: No
Conversion: No

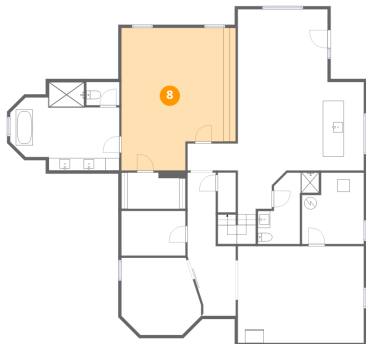
7 Floor 1 - Primary Bath



Max Dimensions: 17'7" x 14'3"
Calculated Area: 193 sq. ft
Included: Yes

Heated: Yes
Finished: Yes
Enclosed: Yes
Contiguous: Yes
Permitted: Yes
Wet space: Yes
Addition: No
Conversion: No

8 Floor 1 - Second Primary Suite



Max Dimensions: 18'5" x 23'0"
Calculated Area: 386 sq. ft
Included: Yes

Heated: Yes
Finished: Yes
Enclosed: Yes
Contiguous: Yes
Permitted: Yes
Wet space: No
Addition: No
Conversion: No

1600 Belford Road, Reno, Washoe County, Nevada, United States, 89509

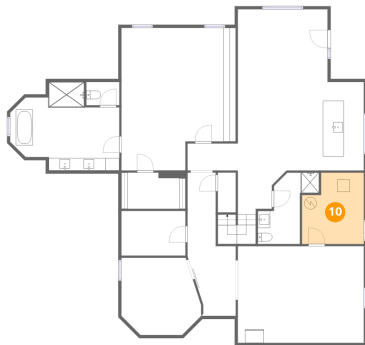
9 Floor 1 - Wet Bar



Max Dimensions: 5'10" x 14'3"
Calculated Area: 83 sq. ft
Included: Yes

Heated: Yes
Finished: Yes
Enclosed: Yes
Contiguous: Yes
Permitted: Yes
Wet space: No
Addition: No
Conversion: No

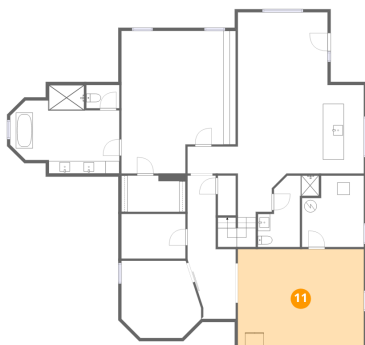
10 Floor 1 - Utility



Max Dimensions: 10'0" x 11'6"
Calculated Area: 104 sq. ft
Included: No

Heated: Yes
Finished: No
Enclosed: Yes
Contiguous: Yes
Permitted: Yes
Wet space: No
Addition: No
Conversion: No

11 Floor 1 - Gym



Max Dimensions: 20'4" x 15'7"
Calculated Area: 317 sq. ft
Included: Yes

Heated: Yes
Finished: Yes
Enclosed: Yes
Contiguous: Yes
Permitted: Yes
Wet space: No
Addition: No
Conversion: No

1600 Belford Road, Reno, Washoe County, Nevada, United States, 89509

12 Floor 1 - Hall



Max Dimensions: 8'1" x 4'4"
Calculated Area: 35 sq. ft
Included: Yes

Heated: Yes
Finished: Yes
Enclosed: Yes
Contiguous: Yes
Permitted: Yes
Wet space: No
Addition: No
Conversion: No

13 Floor 1 - WC



Max Dimensions: 5'4" x 3'9"
Calculated Area: 20 sq. ft
Included: Yes

Heated: Yes
Finished: Yes
Enclosed: Yes
Contiguous: Yes
Permitted: Yes
Wet space: Yes
Addition: No
Conversion: No

14 Floor 1 - Hall

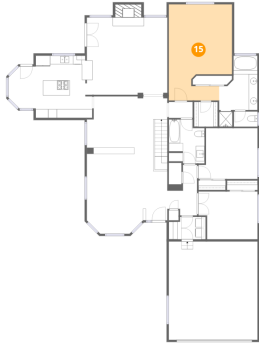


Max Dimensions: 7'8" x 7'1"
Calculated Area: 68 sq. ft
Included: Yes

Heated: Yes
Finished: Yes
Enclosed: Yes
Contiguous: Yes
Permitted: Yes
Wet space: No
Addition: No
Conversion: No

1600 Belford Road, Reno, Washoe County, Nevada, United States, 89509

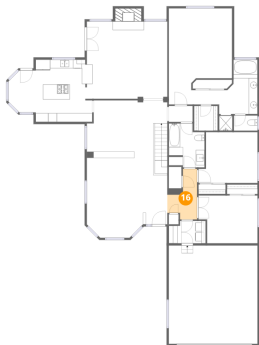
15 Floor 2 - Primary Bedroom



Max Dimensions: 14'6" x 21'11"
Calculated Area: 284 sq. ft
Included: Yes

Heated: Yes
Finished: Yes
Enclosed: Yes
Contiguous: Yes
Permitted: Yes
Wet space: No
Addition: No
Conversion: No

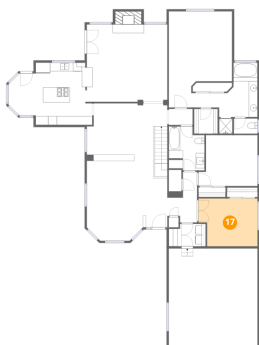
16 Floor 2 - Hall



Max Dimensions: 6'10" x 11'7"
Calculated Area: 53 sq. ft
Included: Yes

Heated: Yes
Finished: Yes
Enclosed: Yes
Contiguous: Yes
Permitted: Yes
Wet space: No
Addition: No
Conversion: No

17 Floor 2 - Bedroom

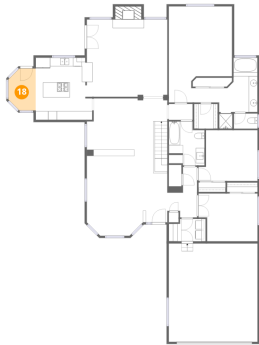


Max Dimensions: 13'6" x 10'11"
Calculated Area: 137 sq. ft
Included: Yes

Heated: Yes
Finished: Yes
Enclosed: Yes
Contiguous: Yes
Permitted: Yes
Wet space: No
Addition: No
Conversion: No

1600 Belford Road, Reno, Washoe County, Nevada, United States, 89509

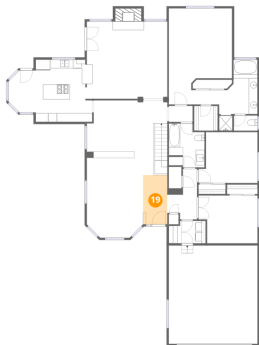
18 Floor 2 - Breakfast Nook



Max Dimensions: 6'3" x 9'7"
Calculated Area: 54 sq. ft
Included: Yes

Heated: Yes
Finished: Yes
Enclosed: Yes
Contiguous: Yes
Permitted: Yes
Wet space: No
Addition: No
Conversion: No

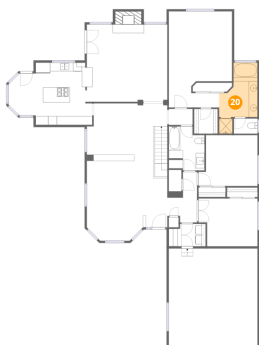
19 Floor 2 - Foyer



Max Dimensions: 5'7" x 11'3"
Calculated Area: 63 sq. ft
Included: Yes

Heated: Yes
Finished: Yes
Enclosed: Yes
Contiguous: Yes
Permitted: Yes
Wet space: No
Addition: No
Conversion: No

20 Floor 2 - Primary Bath



Max Dimensions: 8'10" x 12'6"
Calculated Area: 99 sq. ft
Included: Yes

Heated: Yes
Finished: Yes
Enclosed: Yes
Contiguous: Yes
Permitted: Yes
Wet space: Yes
Addition: No
Conversion: No

1600 Belford Road, Reno, Washoe County, Nevada, United States, 89509

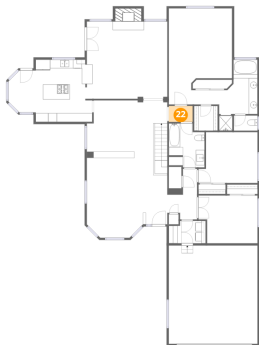
21 Floor 2 - Family Room



Max Dimensions: 18'9" x 17'8"
Calculated Area: 348 sq. ft
Included: Yes

Heated: Yes
Finished: Yes
Enclosed: Yes
Contiguous: Yes
Permitted: Yes
Wet space: No
Addition: No
Conversion: No

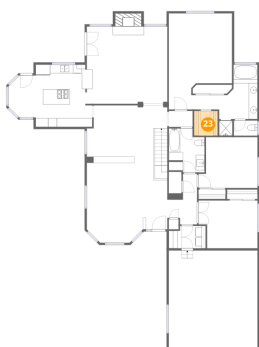
22 Floor 2 - Hall



Max Dimensions: 5'6" x 3'8"
Calculated Area: 20 sq. ft
Included: Yes

Heated: Yes
Finished: Yes
Enclosed: Yes
Contiguous: Yes
Permitted: Yes
Wet space: No
Addition: No
Conversion: No

23 Floor 2 - W.I.C.

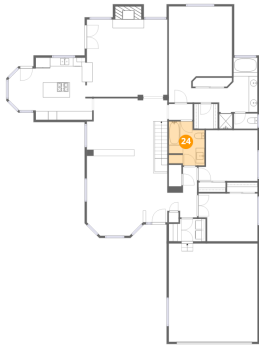


Max Dimensions: 5'5" x 5'8"
Calculated Area: 31 sq. ft
Included: Yes

Heated: Yes
Finished: Yes
Enclosed: Yes
Contiguous: Yes
Permitted: Yes
Wet space: No
Addition: No
Conversion: No

1600 Belford Road, Reno, Washoe County, Nevada, United States, 89509

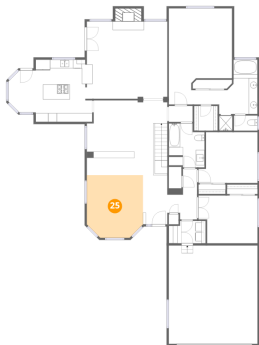
24 Floor 2 - Bath



Max Dimensions: 8'2" x 10'1"
Calculated Area: 74 sq. ft
Included: Yes

Heated: Yes
Finished: Yes
Enclosed: Yes
Contiguous: Yes
Permitted: Yes
Wet space: Yes
Addition: No
Conversion: No

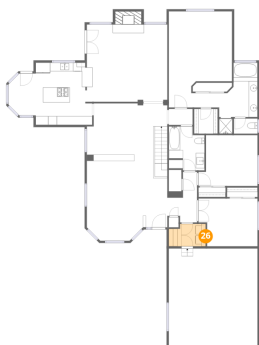
25 Floor 2 - Dining Area



Max Dimensions: 12'10" x 14'4"
Calculated Area: 175 sq. ft
Included: Yes

Heated: Yes
Finished: Yes
Enclosed: Yes
Contiguous: Yes
Permitted: Yes
Wet space: No
Addition: No
Conversion: No

26 Floor 2 - Laundry

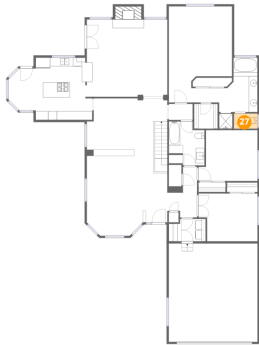


Max Dimensions: 8'5" x 5'2"
Calculated Area: 40 sq. ft
Included: Yes

Heated: Yes
Finished: Yes
Enclosed: Yes
Contiguous: Yes
Permitted: Yes
Wet space: No
Addition: No
Conversion: No

1600 Belford Road, Reno, Washoe County, Nevada, United States, 89509

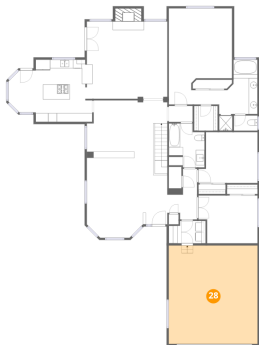
27 Floor 2 - WC



Max Dimensions: 5'5" x 3'6"
Calculated Area: 19 sq. ft
Included: Yes

Heated: Yes
Finished: Yes
Enclosed: Yes
Contiguous: Yes
Permitted: Yes
Wet space: Yes
Addition: No
Conversion: No

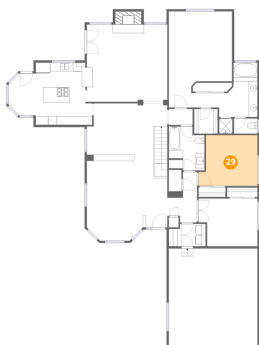
28 Floor 2 - Garage



Max Dimensions: 20'4" x 22'6"
Calculated Area: 457 sq. ft
Included: No

Heated: No
Finished: No
Enclosed: Yes
Contiguous: Yes
Permitted: Yes
Wet space: No
Addition: No
Conversion: No

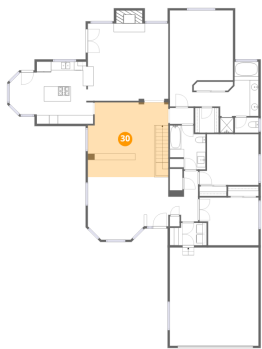
29 Floor 2 - Bedroom



Max Dimensions: 13'6" x 11'8"
Calculated Area: 143 sq. ft
Included: Yes

Heated: Yes
Finished: Yes
Enclosed: Yes
Contiguous: Yes
Permitted: Yes
Wet space: No
Addition: No
Conversion: No

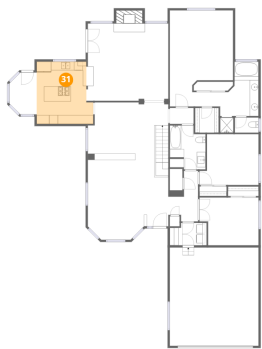
30 Floor 2 - Living Room



Max Dimensions: 16'10" x 17'2"
Calculated Area: 308 sq. ft
Included: Yes

Heated: Yes
Finished: Yes
Enclosed: Yes
Contiguous: Yes
Permitted: Yes
Wet space: No
Addition: No
Conversion: No

31 Floor 2 - Kitchen



Max Dimensions: 12'11" x 14'3"
Calculated Area: 170 sq. ft
Included: Yes

Heated: Yes
Finished: Yes
Enclosed: Yes
Contiguous: Yes
Permitted: Yes
Wet space: No
Addition: No
Conversion: No