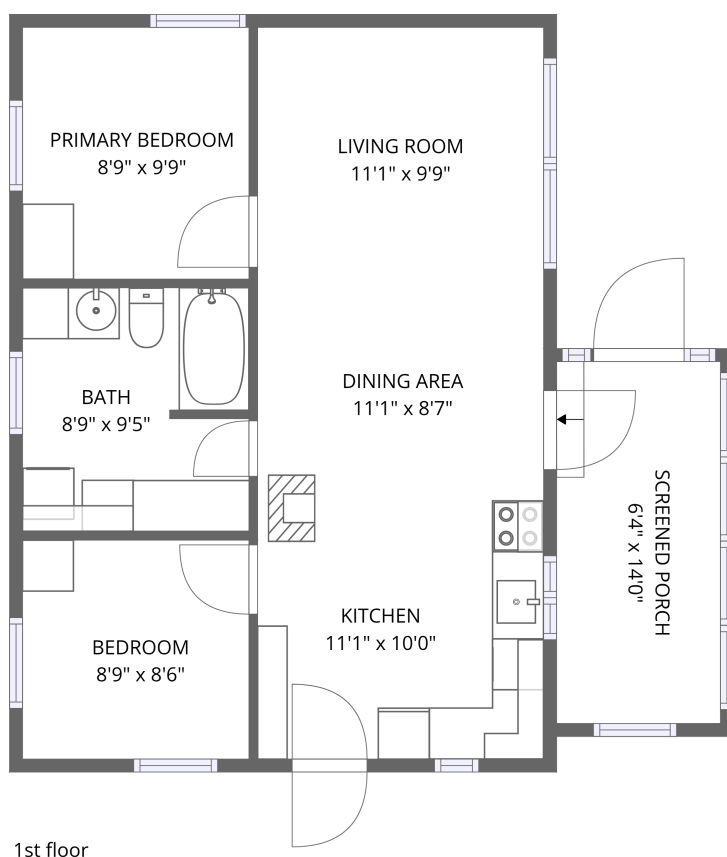


Home data report

116 Mill Bay Lane, Maberly, Frontenac County, Ontario, Canada,  
K0H 2B0



1st floor

**Total Area: 570 sq. ft**

1st Floor: 570 sq. ft

Excluded: Screened porch 89 sq. ft, Walls: 64 sq. ft

## Property summary

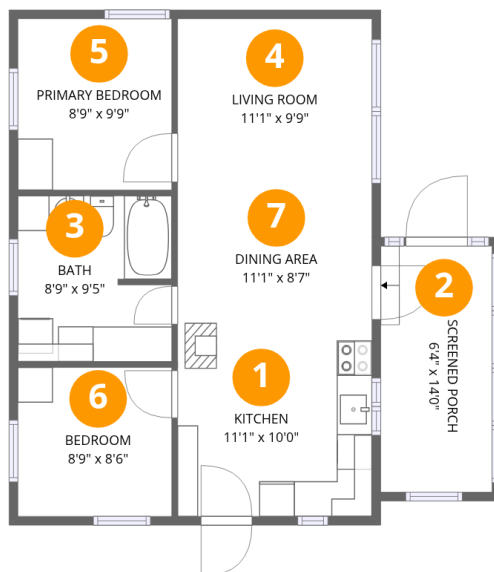
 **1** Floors

 **2** Bedrooms

 **1** Bathrooms

# Home data report

## 116 Mill Bay Lane, Maberly, Frontenac County, Ontario, Canada, K0H 2B0



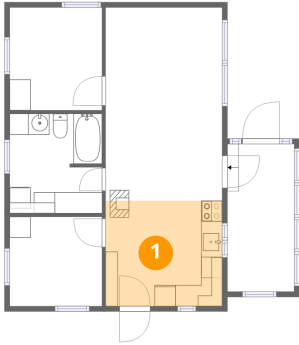
### Room dimensions

Floor 1

Total:570sqft Excluded: 89sqft

#		Dimensions	sqft	Counted as living area
1	Kitchen	11'1" x 10'0"	110 sq. ft	Yes
2	Screened Porch	6'4" x 14'0"	89 sq. ft	No
3	Bath	8'9" x 9'5"	83 sq. ft	Yes
4	Living Room	11'1" x 9'9"	108 sq. ft	Yes
5	Primary Bedroom	8'9" x 9'9"	85 sq. ft	Yes
6	Bedroom	8'9" x 8'6"	74 sq. ft	Yes
7	Dining Area	11'1" x 8'7"	95 sq. ft	Yes

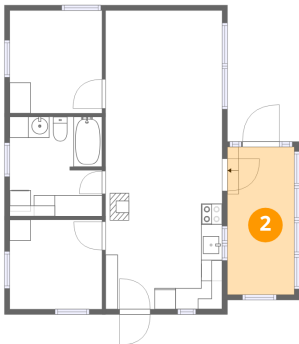
## 1 Floor 1 - Kitchen



Dimensions: 11'1" x 10'0"  
Area: 110 sq. ft  
Counted as living area: Yes

Heated: Yes  
Finished: Yes  
Enclosed: Yes  
Contiguous: Yes  
Permitted: Yes  
Wet space: No  
Addition: No  
Conversion: No

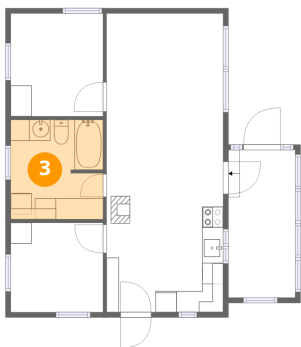
## 2 Floor 1 - Screened Porch



Dimensions: 6'4" x 14'0"  
Area: 89 sq. ft  
Counted as living area: No

Heated: No  
Finished: No  
Enclosed: No  
Contiguous: Yes  
Permitted: Yes  
Wet space: No  
Addition: No  
Conversion: No

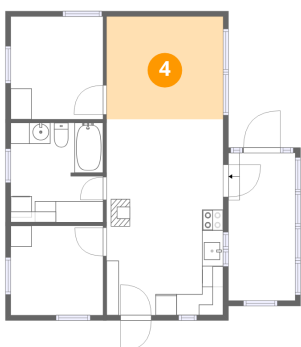
### 3 Floor 1 - Bath



Dimensions: 8'9" x 9'5"  
Area: 83 sq. ft  
Counted as living area: Yes

Heated: Yes  
Finished: Yes  
Enclosed: Yes  
Contiguous: Yes  
Permitted: Yes  
Wet space: Yes  
Addition: No  
Conversion: No

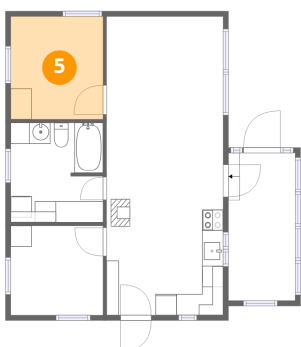
### 4 Floor 1 - Living Room



Dimensions: 11'1" x 9'9"  
Area: 108 sq. ft  
Counted as living area: Yes

Heated: Yes  
Finished: Yes  
Enclosed: Yes  
Contiguous: Yes  
Permitted: Yes  
Wet space: No  
Addition: No  
Conversion: No

### 5 Floor 1 - Primary Bedroom

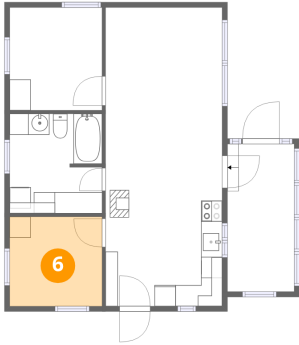


Dimensions: 8'9" x 9'9"  
Area: 85 sq. ft  
Counted as living area: Yes

Heated: Yes  
Finished: Yes  
Enclosed: Yes  
Contiguous: Yes  
Permitted: Yes  
Wet space: No  
Addition: No  
Conversion: No

**6** Floor 1 - Bedroom

---

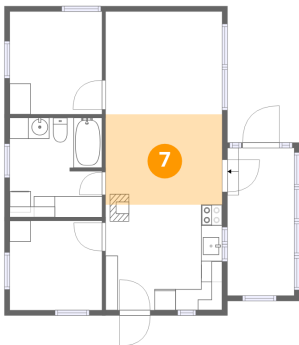


Dimensions: 8'9" x 8'6"  
Area: 74 sq. ft  
Counted as living area: Yes

Heated: Yes  
Finished: Yes  
Enclosed: Yes  
Contiguous: Yes  
Permitted: Yes  
Wet space: No  
Addition: No  
Conversion: No

**7** Floor 1 - Dining Area

---



Dimensions: 11'1" x 8'7"  
Area: 95 sq. ft  
Counted as living area: Yes

Heated: Yes  
Finished: Yes  
Enclosed: Yes  
Contiguous: Yes  
Permitted: Yes  
Wet space: No  
Addition: No  
Conversion: No