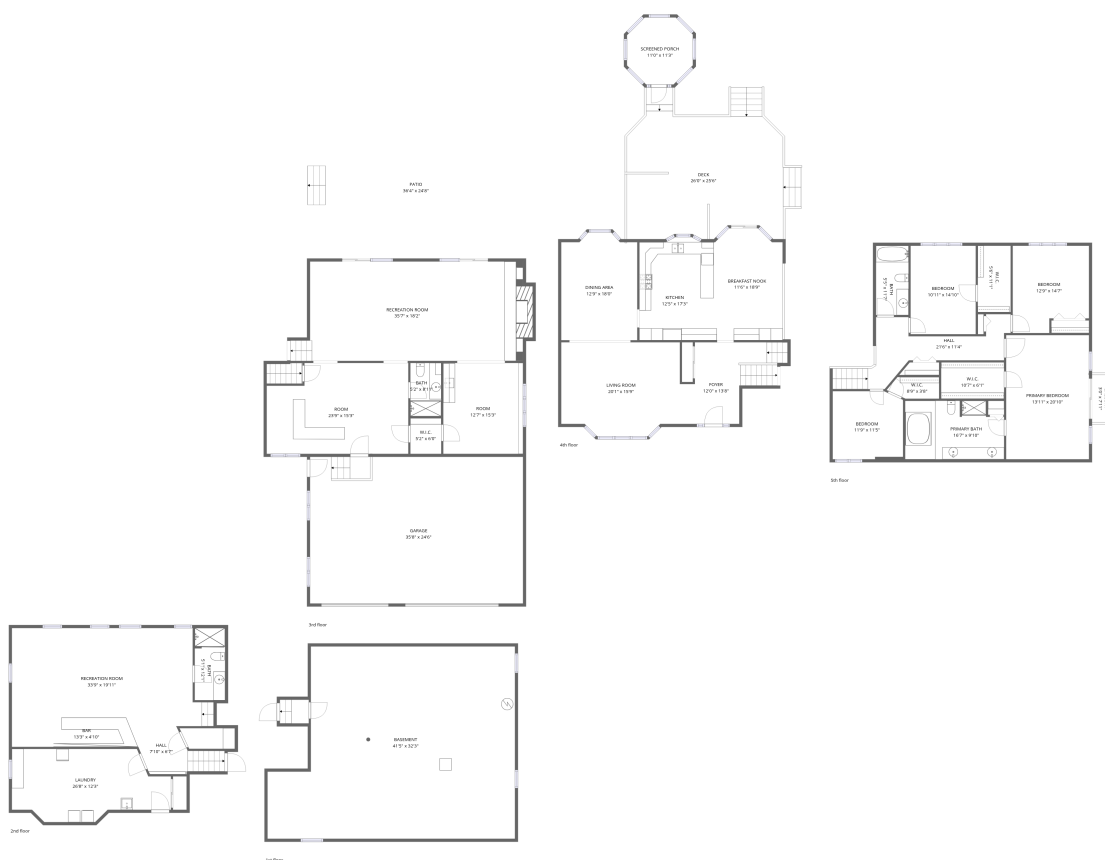


Home data report

6037 Dunham Rd, Downers Grove, IL, US



Total Area: 5752 sq. ft

1st Floor: 21 sq. ft, 2nd Floor: 1062 sq. ft, 3rd Floor: 2151 sq. ft, 4th Floor: 1133 sq. ft, 5th Floor: 1385 sq. ft

Excluded: Basement 1182 sq. ft, Patio 882 sq. ft, Fireplace 16 sq. ft, Screened porch 105 sq. ft, Deck 550 sq. ft, Balcony 24 sq. ft, Walls: 424 sq. ft

Property summary



5
Floors



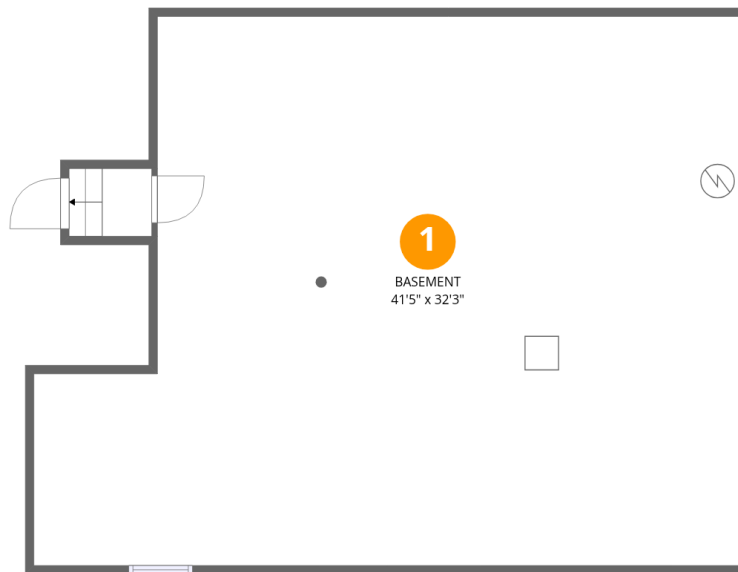
4
Bedrooms



4
Bathrooms



1
Garages



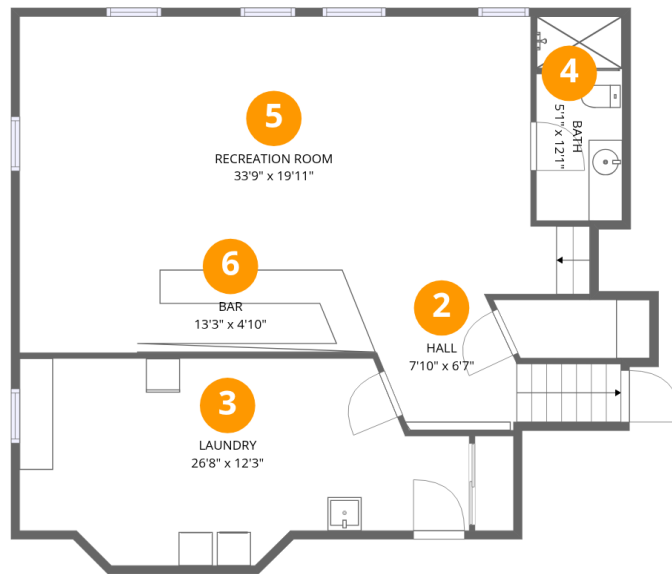
Room dimensions

Floor 1

Total:21sqft

Excluded: 1182sqft

#		Dimensions	sqft	Counted as living area
1	Basement	41'5" x 32'3"	1334 sq. ft	No



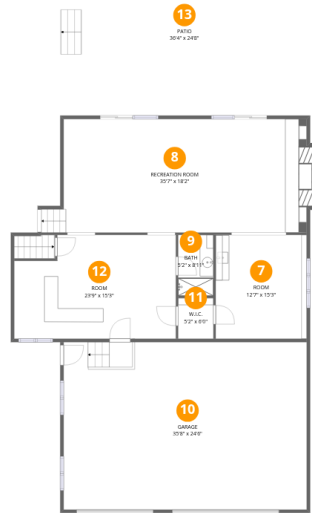
Room dimensions

Floor 2

Total: 1062 sqft

Excluded: 0 sqft

#		Dimensions	sqft	Counted as living area
2	Hall	7'10" x 6'7"	52 sq. ft	Yes
3	Laundry	26'8" x 12'3"	327 sq. ft	Yes
4	Bath	5'1" x 12'1"	61 sq. ft	Yes
5	Recreation Room	33'9" x 19'11"	672 sq. ft	Yes
6	Bar	13'3" x 4'10"	64 sq. ft	Yes



Room dimensions

Floor 3

Total: 2151 sqft

Excluded: 898 sqft

#		Dimensions	sqft	Counted as living area
7	Room	12'7" x 15'3"	192 sq. ft	Yes
8	Recreation Room	35'7" x 18'2"	648 sq. ft	Yes
9	Bath	5'2" x 8'11"	46 sq. ft	Yes
10	Garage	35'8" x 24'6"	874 sq. ft	Yes
11	W.I.C.	5'2" x 6'0"	31 sq. ft	Yes
12	Room	23'9" x 15'3"	361 sq. ft	Yes
13	Patio	36'4" x 24'8"	897 sq. ft	No

Home data report

6037 Dunham Rd, Downers Grove, IL, US



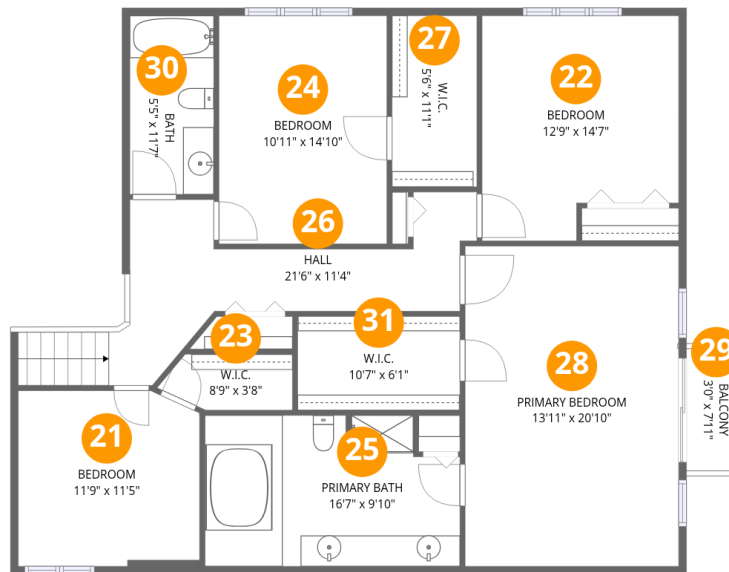
Room dimensions

Floor 4

Total: 1133sqft

Excluded: 655sqft

#		Dimensions	sqft	Counted as living area
14	Deck	26'0" x 25'6"	663 sq. ft	No
15	Kitchen	12'5" x 17'3"	215 sq. ft	Yes
16	Dining Area	12'9" x 18'0"	229 sq. ft	Yes
17	Foyer	12'0" x 13'8"	165 sq. ft	Yes
18	Breakfast Nook	11'6" x 18'9"	216 sq. ft	Yes
19	Living Room	20'1" x 15'9"	316 sq. ft	Yes
20	Screened Porch	11'0" x 11'3"	123 sq. ft	No



Room dimensions

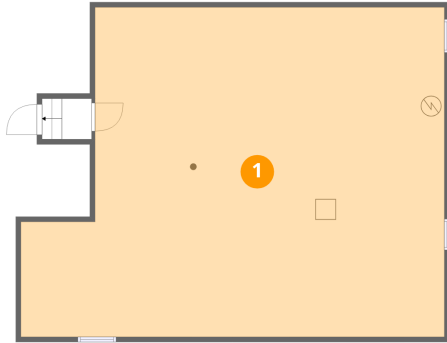
Floor 5

Total: 1385 sqft

Excluded: 24 sqft

#		Dimensions	sqft	Counted as living area
21	Bedroom	11'9" x 11'5"	134 sq. ft	Yes
22	Bedroom	12'9" x 14'7"	187 sq. ft	Yes
23	W.I.C.	8'9" x 3'8"	32 sq. ft	Yes
24	Bedroom	10'11" x 14'10"	162 sq. ft	Yes
25	Primary Bath	16'7" x 9'10"	162 sq. ft	Yes
26	Hall	21'6" x 11'4"	244 sq. ft	Yes
27	W.I.C.	5'6" x 11'1"	61 sq. ft	Yes
28	Primary Bedroom	13'11" x 20'10"	289 sq. ft	Yes
29	Balcony	3'0" x 7'11"	24 sq. ft	No
30	Bath	5'5" x 11'7"	63 sq. ft	Yes
31	W.I.C.	10'7" x 6'1"	64 sq. ft	Yes

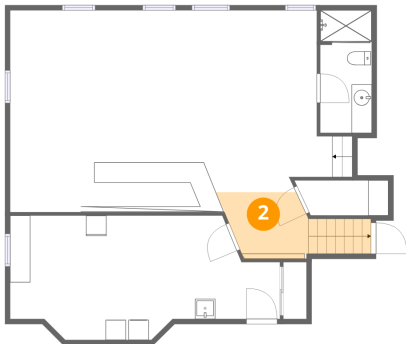
1 Floor 1 - Basement



Dimensions: 41'5" x 32'3"
Area: 1334 sq. ft
Counted as living area: No

Heated: Yes
Finished: No
Enclosed: Yes
Contiguous: Yes
Permitted: Yes
Wet space: No
Addition: No
Conversion: No

2 Floor 2 - Hall



Dimensions: 7'10" x 6'7"
Area: 52 sq. ft
Counted as living area: Yes

Heated: Yes
Finished: Yes
Enclosed: Yes
Contiguous: Yes
Permitted: Yes
Wet space: No
Addition: No
Conversion: No

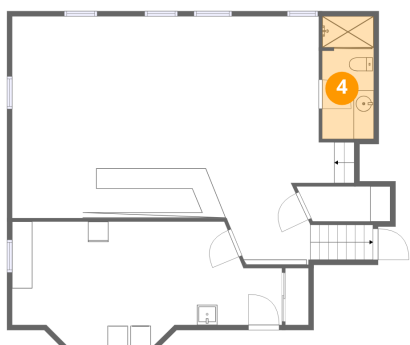
3 Floor 2 - Laundry



Dimensions: 26'8" x 12'3"
Area: 327 sq. ft
Counted as living area: Yes

Heated: Yes
Finished: Yes
Enclosed: Yes
Contiguous: Yes
Permitted: Yes
Wet space: No
Addition: No
Conversion: No

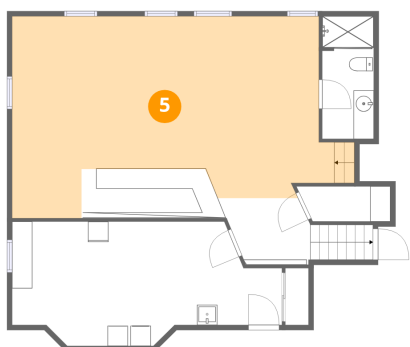
4 Floor 2 - Bath



Dimensions: 5'1" x 12'1"
Area: 61 sq. ft
Counted as living area: Yes

Heated: Yes
Finished: Yes
Enclosed: Yes
Contiguous: Yes
Permitted: Yes
Wet space: Yes
Addition: No
Conversion: No

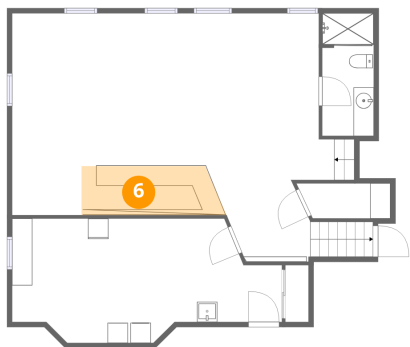
5 Floor 2 - Recreation Room



Dimensions: 33'9" x 19'11"
Area: 672 sq. ft
Counted as living area: Yes

Heated: Yes
Finished: Yes
Enclosed: Yes
Contiguous: Yes
Permitted: Yes
Wet space: No
Addition: No
Conversion: No

6 Floor 2 - Bar



Dimensions: 13'3" x 4'10"
Area: 64 sq. ft
Counted as living area: Yes

Heated: Yes
Finished: Yes
Enclosed: Yes
Contiguous: Yes
Permitted: Yes
Wet space: No
Addition: No
Conversion: No

7 Floor 3 - Room



Dimensions: 12'7" x 15'3"
Area: 192 sq. ft
Counted as living area: Yes

Heated: Yes
Finished: Yes
Enclosed: Yes
Contiguous: Yes
Permitted: Yes
Wet space: No
Addition: No
Conversion: No

8 Floor 3 - Recreation Room



Dimensions: 35'7" x 18'2"
Area: 648 sq. ft
Counted as living area: Yes

Heated: Yes
Finished: Yes
Enclosed: Yes
Contiguous: Yes
Permitted: Yes
Wet space: No
Addition: No
Conversion: No

9 Floor 3 - Bath



Dimensions: 5'2" x 8'11"
Area: 46 sq. ft
Counted as living area: Yes

Heated: Yes
Finished: Yes
Enclosed: Yes
Contiguous: Yes
Permitted: Yes
Wet space: Yes
Addition: No
Conversion: No

10 Floor 3 - Garage



Dimensions: 35'8" x 24'6"
Area: 874 sq. ft
Counted as living area: No

Heated: No
Finished: Yes
Enclosed: Yes
Contiguous: Yes
Permitted: Yes
Wet space: No
Addition: No
Conversion: No

11 Floor 3 - W.I.C.



Dimensions: 5'2" x 6'0"
Area: 31 sq. ft
Counted as living area: Yes

Heated: Yes
Finished: Yes
Enclosed: Yes
Contiguous: Yes
Permitted: Yes
Wet space: No
Addition: No
Conversion: No

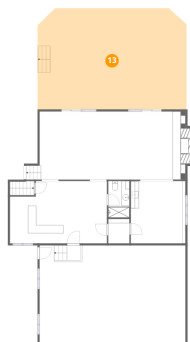
12 Floor 3 - Room



Dimensions: 23'9" x 15'3"
Area: 361 sq. ft
Counted as living area: Yes

Heated: Yes
Finished: Yes
Enclosed: Yes
Contiguous: Yes
Permitted: Yes
Wet space: No
Addition: No
Conversion: No

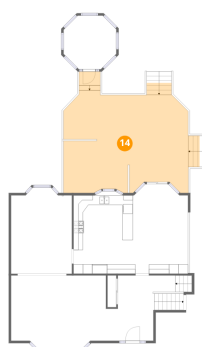
13 Floor 3 - Patio



Dimensions: 36'4" x 24'8"
Area: 897 sq. ft
Counted as living area: No

Heated: No
Finished: No
Enclosed: No
Contiguous: Yes
Permitted: Yes
Wet space: No
Addition: No
Conversion: No

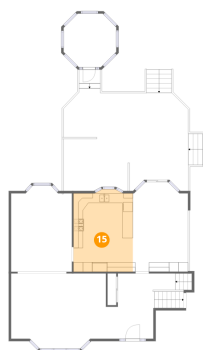
14 Floor 4 - Deck



Dimensions: 26'0" x 25'6"
Area: 663 sq. ft
Counted as living area: No

Heated: No
Finished: No
Enclosed: No
Contiguous: Yes
Permitted: Yes
Wet space: No
Addition: No
Conversion: No

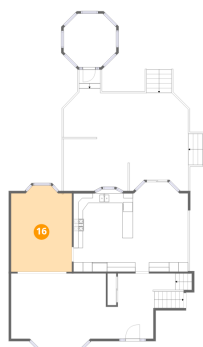
15 Floor 4 - Kitchen



Dimensions: 12'5" x 17'3"
Area: 215 sq. ft
Counted as living area: Yes

Heated: Yes
Finished: Yes
Enclosed: Yes
Contiguous: Yes
Permitted: Yes
Wet space: No
Addition: No
Conversion: No

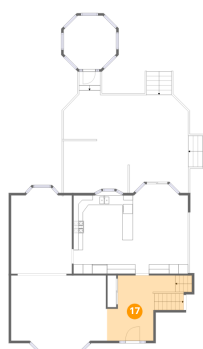
16 Floor 4 - Dining Area



Dimensions: 12'9" x 18'0"
Area: 229 sq. ft
Counted as living area: Yes

Heated: Yes
Finished: Yes
Enclosed: Yes
Contiguous: Yes
Permitted: Yes
Wet space: No
Addition: No
Conversion: No

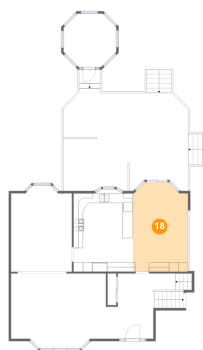
17 Floor 4 - Foyer



Dimensions: 12'0" x 13'8"
Area: 165 sq. ft
Counted as living area: Yes

Heated: Yes
Finished: Yes
Enclosed: Yes
Contiguous: Yes
Permitted: Yes
Wet space: No
Addition: No
Conversion: No

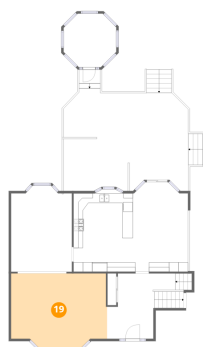
18 Floor 4 - Breakfast Nook



Dimensions: 11'6" x 18'9"
Area: 216 sq. ft
Counted as living area: Yes

Heated: Yes
Finished: Yes
Enclosed: Yes
Contiguous: Yes
Permitted: Yes
Wet space: No
Addition: No
Conversion: No

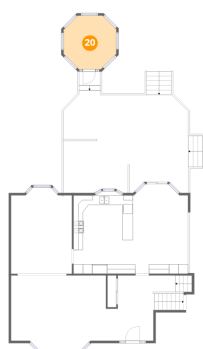
19 Floor 4 - Living Room



Dimensions: 20'1" x 15'9"
Area: 316 sq. ft
Counted as living area: Yes

Heated: Yes
Finished: Yes
Enclosed: Yes
Contiguous: Yes
Permitted: Yes
Wet space: No
Addition: No
Conversion: No

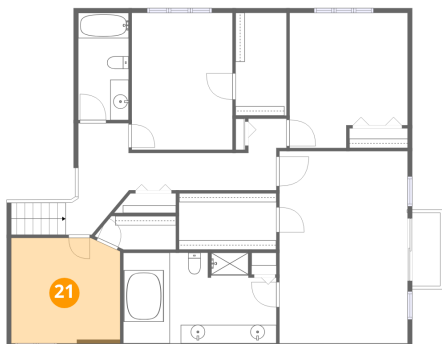
20 Floor 4 - Screened Porch



Dimensions: 11'0" x 11'3"
Area: 123 sq. ft
Counted as living area: No

Heated: No
Finished: No
Enclosed: No
Contiguous: Yes
Permitted: Yes
Wet space: No
Addition: No
Conversion: No

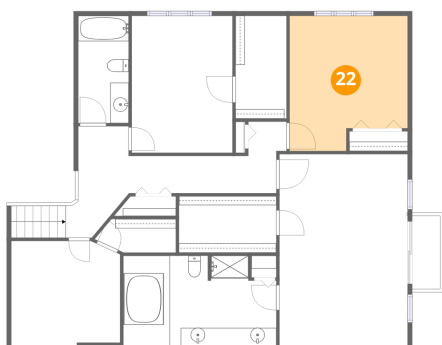
21 Floor 5 - Bedroom



Dimensions: 11'9" x 11'5"
Area: 134 sq. ft
Counted as living area: Yes

Heated: Yes
Finished: Yes
Enclosed: Yes
Contiguous: Yes
Permitted: Yes
Wet space: No
Addition: No
Conversion: No

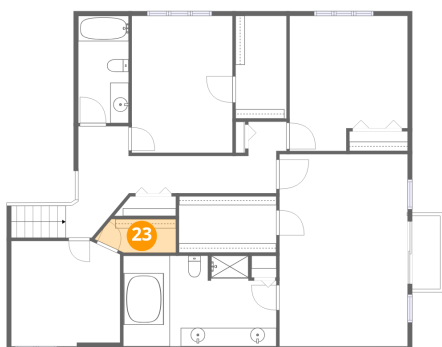
22 Floor 5 - Bedroom



Dimensions: 12'9" x 14'7"
Area: 187 sq. ft
Counted as living area: Yes

Heated: Yes
Finished: Yes
Enclosed: Yes
Contiguous: Yes
Permitted: Yes
Wet space: No
Addition: No
Conversion: No

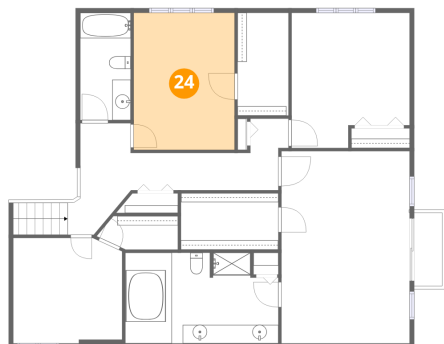
23 Floor 5 - W.I.C.



Dimensions: 8'9" x 3'8"
Area: 32 sq. ft
Counted as living area: Yes

Heated: Yes
Finished: Yes
Enclosed: Yes
Contiguous: Yes
Permitted: Yes
Wet space: No
Addition: No
Conversion: No

24 Floor 5 - Bedroom



Dimensions: 10'11" x 14'10"

Area: 162 sq. ft

Counted as living area: Yes

Heated: Yes

Finished: Yes

Enclosed: Yes

Contiguous: Yes

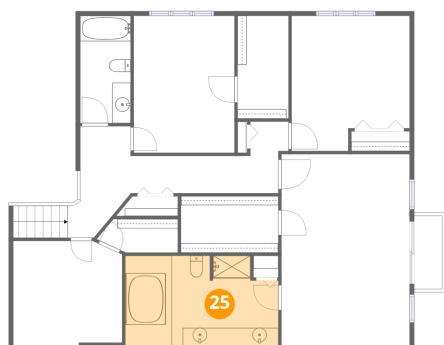
Permitted: Yes

Wet space: No

Addition: No

Conversion: No

25 Floor 5 - Primary Bath



Dimensions: 16'7" x 9'10"

Area: 162 sq. ft

Counted as living area: Yes

Heated: Yes

Finished: Yes

Enclosed: Yes

Contiguous: Yes

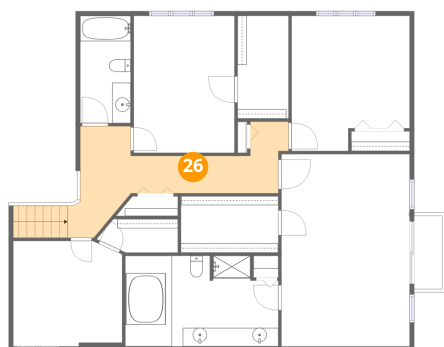
Permitted: Yes

Wet space: Yes

Addition: No

Conversion: No

26 Floor 5 - Hall



Dimensions: 21'6" x 11'4"

Area: 244 sq. ft

Counted as living area: Yes

Heated: Yes

Finished: Yes

Enclosed: Yes

Contiguous: Yes

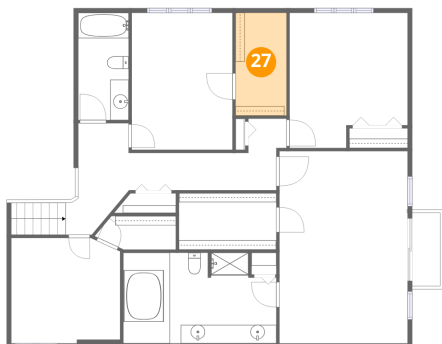
Permitted: Yes

Wet space: No

Addition: No

Conversion: No

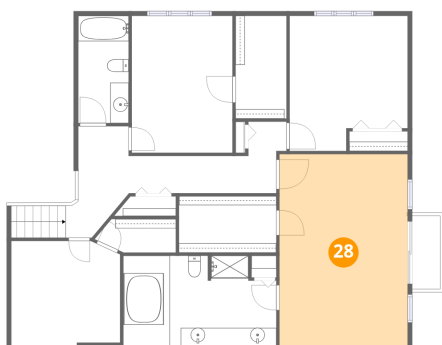
27 Floor 5 - W.I.C.



Dimensions: 5'6" x 11'1"
Area: 61 sq. ft
Counted as living area: Yes

Heated: Yes
Finished: Yes
Enclosed: Yes
Contiguous: Yes
Permitted: Yes
Wet space: No
Addition: No
Conversion: No

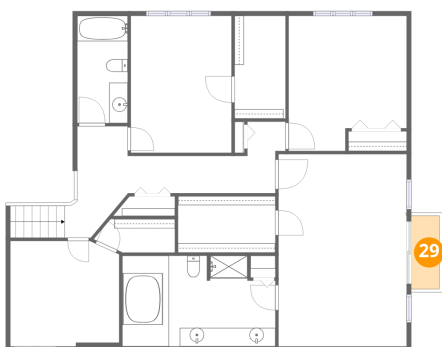
28 Floor 5 - Primary Bedroom



Dimensions: 13'11" x 20'10"
Area: 289 sq. ft
Counted as living area: Yes

Heated: Yes
Finished: Yes
Enclosed: Yes
Contiguous: Yes
Permitted: Yes
Wet space: No
Addition: No
Conversion: No

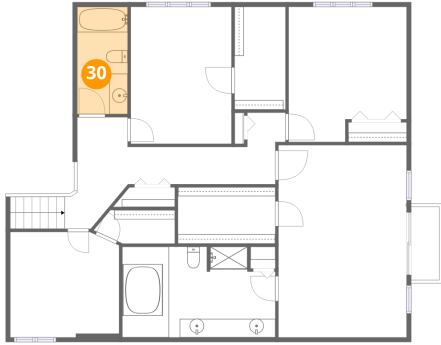
29 Floor 5 - Balcony



Dimensions: 3'0" x 7'11"
Area: 24 sq. ft
Counted as living area: No

Heated: No
Finished: No
Enclosed: No
Contiguous: Yes
Permitted: Yes
Wet space: No
Addition: No
Conversion: No

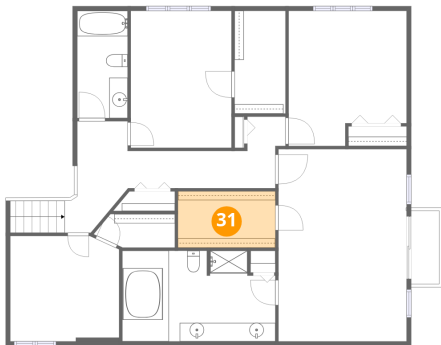
30 Floor 5 - Bath



Dimensions: 5'5" x 11'7"
Area: 63 sq. ft
Counted as living area: Yes

Heated: Yes
Finished: Yes
Enclosed: Yes
Contiguous: Yes
Permitted: Yes
Wet space: Yes
Addition: No
Conversion: No

31 Floor 5 - W.I.C.



Dimensions: 10'7" x 6'1"
Area: 64 sq. ft
Counted as living area: Yes

Heated: Yes
Finished: Yes
Enclosed: Yes
Contiguous: Yes
Permitted: Yes
Wet space: No
Addition: No
Conversion: No