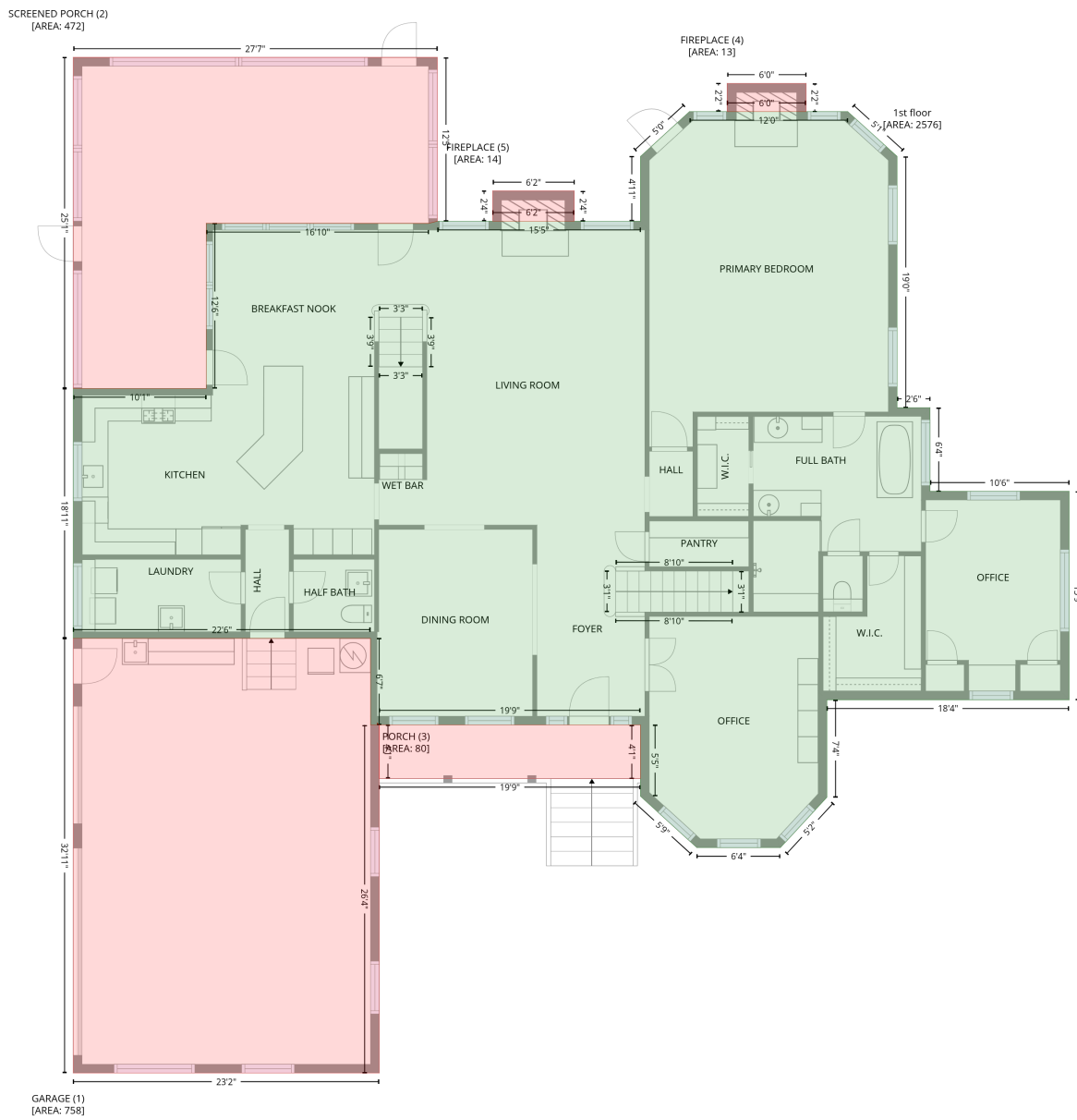


# 2117 Sandy Pond Lane, Waxhaw, Union County, North Carolina, United States, 28173

Gross Living Area: 4690 sq. ft

## Level 1



# 2117 Sandy Pond Lane, Waxhaw, Union County, North Carolina, United States, 28173

Gross Living Area: 4690 sq. ft

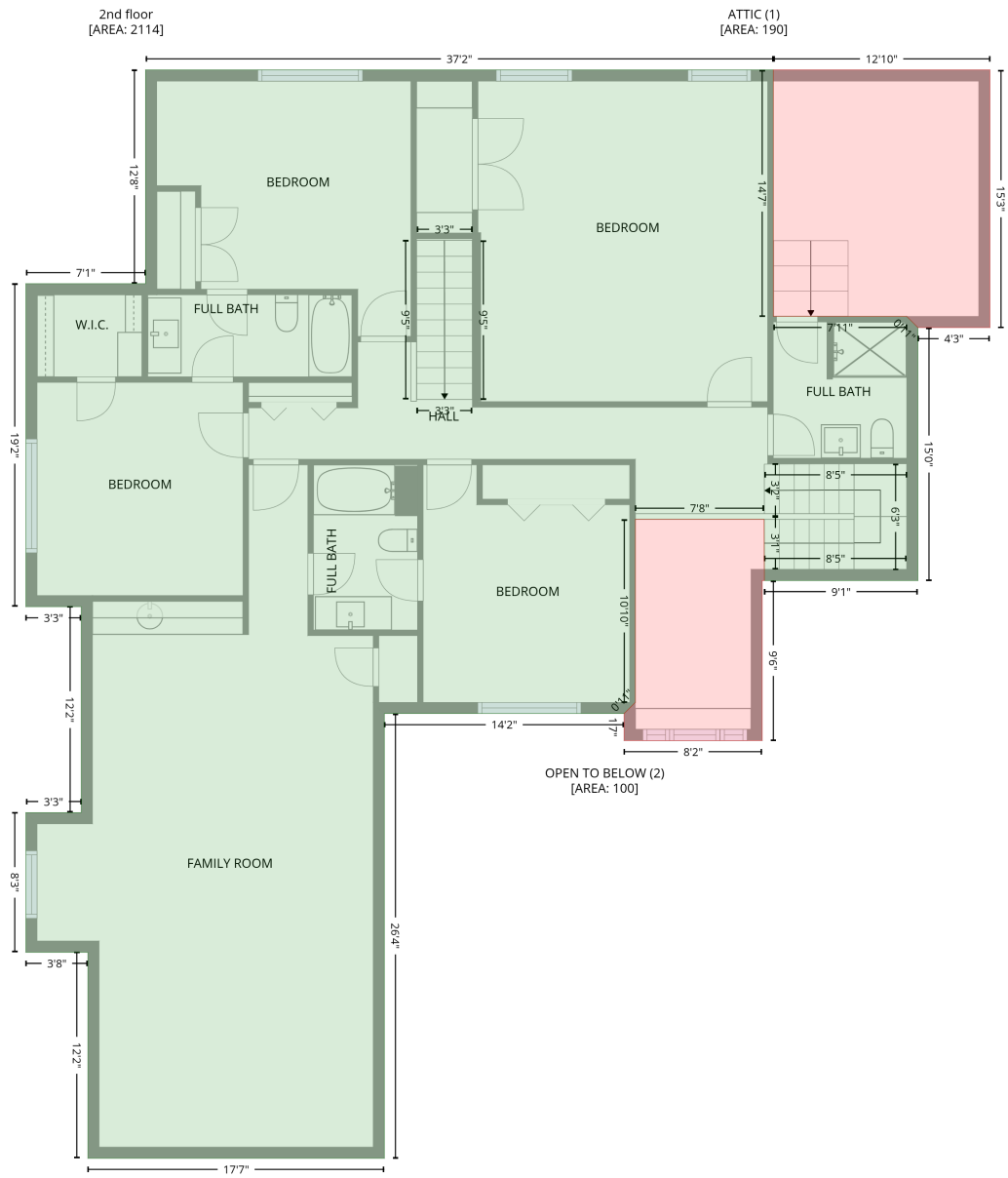
## Level 1

Space	Area (sq. ft)	Calculation <small>Coordinate Polygon Area Algorithm using inches</small>
1st floor (Living area)	2576	$-\left((720.4 + 765.4) * (61.3 - 102) + (765.4 + 765.4) * (102 - 330.2) + (765.4 + 795.3) * (330.2 - 330.2) + (795.3 + 795.3) * (330.2 - 406.2) + (795.3 + 921.7) * (406.2 - 406.2) + (921.7 + 921.7) * (406.2 - 595.6) + (921.7 + 701.6) * (595.6 - 595.6) + (701.6 + 701.6) * (595.6 - 684.1) + (701.6 + 659.3) * (684.1 - 729.9) + (659.3 + 583.4) * (729.9 - 729.9) + (583.4 + 532.2) * (729.9 - 683.2) + (532.2 + 532.2) * (683.2 - 618.5) + (532.2 + 294.9) * (618.5 - 618.5) + (294.9 + 292.9) * (618.5 - 616.5) + (292.9 + 292.9) * (616.5 - 618.5) + (292.9 + 286.9) * (618.5 - 618.5) + (286.9 + 286.9) * (618.5 - 539.8) + (286.9 + 16.8) * (539.8 - 539.8) + (16.8 + 16.8) * (539.8 - 312.9) + (16.8 + 137.6) * (312.9 - 312.9) + (137.6 + 137.6) * (312.9 - 162.9) + (137.6 + 339.7) * (162.9 - 162.9) + (339.7 + 347.6) * (162.9 - 160.9) + (347.6 + 532.2) * (160.9 - 160.9) + (532.2 + 532.2) * (160.9 - 102.1) + (532.2 + 576.8) * (102.1 - 61.3) + (576.8 + 720.4) * (61.3 - 61.3)) * 0.5 * 0.00694$
GARAGE (Non-living area)	758	$-\left((286.9 + 286.9) * (539.8 - 618.5) + (286.9 + 292.9) * (618.5 - 618.5) + (292.9 + 292.9) * (618.5 - 616.5) + (292.9 + 294.9) * (616.5 - 618.5) + (294.9 + 294.9) * (618.5 - 934.6) + (294.9 + 16.8) * (934.6 - 934.6) + (16.8 + 16.8) * (934.6 - 539.8) + (16.8 + 286.9) * (539.8 - 539.8)) * 0.5 * 0.00694$
SCREENED PORCH (Non-living area)	472	$-\left((16.8 + 347.6) * (12.1 - 12.1) + (347.6 + 347.6) * (12.1 - 160.9) + (347.6 + 339.7) * (160.9 - 162.9) + (339.7 + 137.6) * (162.9 - 162.9) + (137.6 + 137.6) * (162.9 - 312.9) + (137.6 + 16.8) * (312.9 - 312.9) + (16.8 + 16.8) * (312.9 - 12.1)) * 0.5 * 0.00694$
PORCH (Non-living area)	80	$-\left((532.2 + 532.2) * (618.5 - 667.1) + (532.2 + 294.9) * (667.1 - 667.1) + (294.9 + 294.9) * (667.1 - 618.5) + (294.9 + 532.2) * (618.5 - 618.5)) * 0.5 * 0.00694$
FIREPLACE (Non-living area)	13	$-\left((682.7 + 682.7) * (35.7 - 61.3) + (682.7 + 610.9) * (61.3 - 61.3) + (610.9 + 610.9) * (61.3 - 35.7) + (610.9 + 682.7) * (35.7 - 35.7)) * 0.5 * 0.00694$
FIREPLACE (Non-living area)	14	$-\left((472 + 472) * (133.3 - 160.9) + (472 + 397.9) * (160.9 - 160.9) + (397.9 + 397.9) * (160.9 - 133.3) + (397.9 + 472) * (133.3 - 133.3)) * 0.5 * 0.00694$

# 2117 Sandy Pond Lane, Waxhaw, Union County, North Carolina, United States, 28173

Gross Living Area: 4690 sq. ft

## Level 2



# 2117 Sandy Pond Lane, Waxhaw, Union County, North Carolina, United States, 28173

Gross Living Area: 4690 sq. ft

## Level 2

Space	Area (sq. ft)	Calculation <small>Coordinate Polygon Area Algorithm using inches</small>
2nd floor (Living area)	2114	$  \begin{aligned}  & -((548 + 548) * (160.9 - 336.1) + (548 + 642.8) * (336.1 - 336.1) + (642.8 + 650.8) * (336.1 - 344.1) + (650.8 + 650.8) * (344.1 - 523.9) + (650.8 + 541.7) * (523.9 - 523.9) + (541.7 + 541.7) * (523.9 - 515.9) + (541.7 + 541.5) * (515.9 - 480.4) + (541.5 + 450) * (480.4 - 480.4) + (450 + 450) * (480.4 - 610.5) + (450 + 449.9) * (610.5 - 610.5) + (449.9 + 442) * (610.5 - 618.5) + (442 + 271.7) * (618.5 - 618.5) + (271.7 + 271.7) * (618.5 - 934.6) + (271.7 + 60.9) * (934.6 - 934.6) + (60.9 + 60.9) * (934.6 - 788.2) + (60.9 + 16.8) * (788.2 - 788.2) + (16.8 + 16.8) * (788.2 - 688.9) + (16.8 + 56.2) * (688.9 - 688.9) + (56.2 + 56.2) * (688.9 - 542.5) + (56.2 + 16.8) * (542.5 - 542.5) + (16.8 + 16.8) * (542.5 - 312.9) + (16.8 + 101.9) * (312.9 - 312.9) + (101.9 + 101.9) * (312.9 - 160.9) + (101.9 + 548) * (160.9 - 160.9)) * 0.5 * 0.00694  \end{aligned}  $
ATTIC (Non-living area)	190	$  \begin{aligned}  & -((702 + 702) * (160.9 - 344.1) + (702 + 650.8) * (344.1 - 344.1) + (650.8 + 642.8) * (344.1 - 336.1) + (642.8 + 548) * (336.1 - 336.1) + (548 + 548) * (336.1 - 160.9) + (548 + 702) * (160.9 - 160.9)) * 0.5 * 0.00694  \end{aligned}  $
OPEN TO BELOW (Non-living area)	100	$  \begin{aligned}  & -((541.5 + 541.7) * (480.4 - 515.9) + (541.7 + 541.7) * (515.9 - 523.9) + (541.7 + 540.2) * (523.9 - 523.9) + (540.2 + 540.2) * (523.9 - 637.7) + (540.2 + 442) * (637.7 - 637.7) + (442 + 442) * (637.7 - 618.5) + (442 + 449.9) * (618.5 - 610.5) + (449.9 + 450) * (610.5 - 610.5) + (450 + 450) * (610.5 - 480.4) + (450 + 541.5) * (480.4 - 480.4)) * 0.5 * 0.00694  \end{aligned}  $