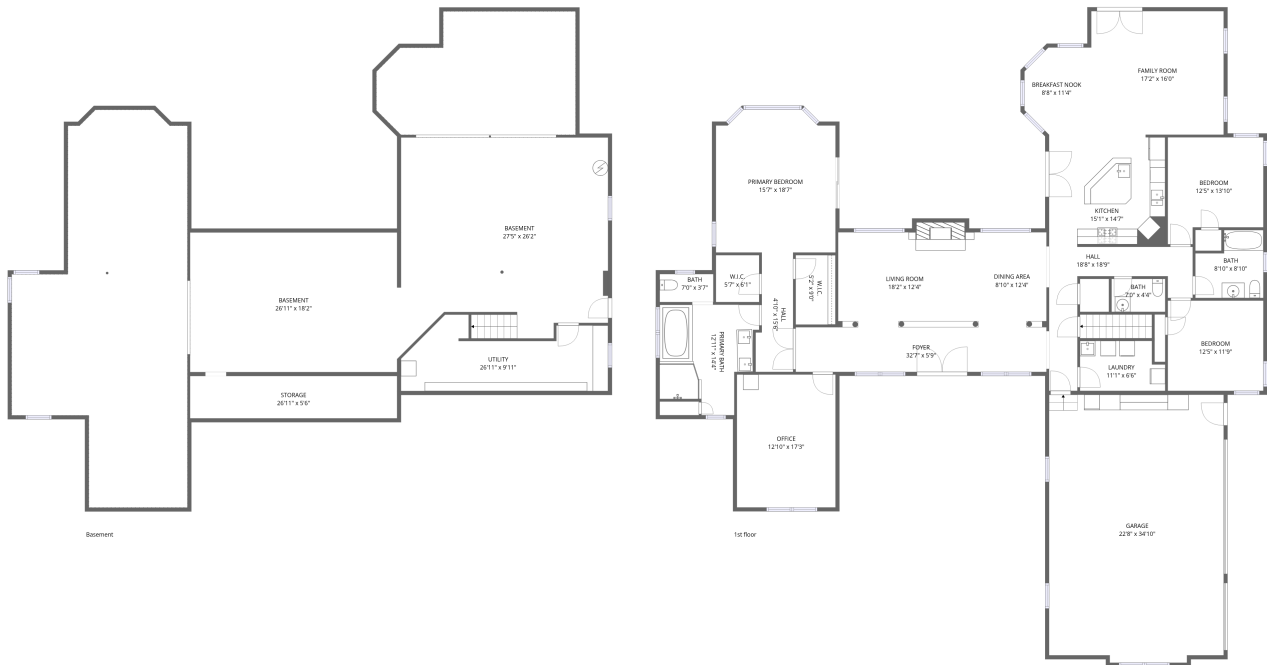


## Home data report

375 East County Road, Drums, Pennsylvania 18222, United States



**Total Area: 2692 sq. ft**

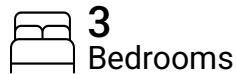
Basement: 0 sq. ft, 1st Floor: 2692 sq. ft

Excluded: Storage 165 sq. ft, Utility 215 sq. ft, Low ceiling 1273 sq. ft, Basement 1170 sq. ft, Garage 780 sq. ft, Fireplace 10 sq. ft, Walls: 362 sq. ft

## Property summary



**2**  
Floors



**3**  
Bedrooms



**2**  
Bathrooms

Home data report

# 375 East County Road, Drums, Pennsylvania 18222, United States



**1**  
Half baths



**1**  
Garages

# 375 East County Road, Drums, Pennsylvania 18222, United States



## Room dimensions

Floor 1 Below grade

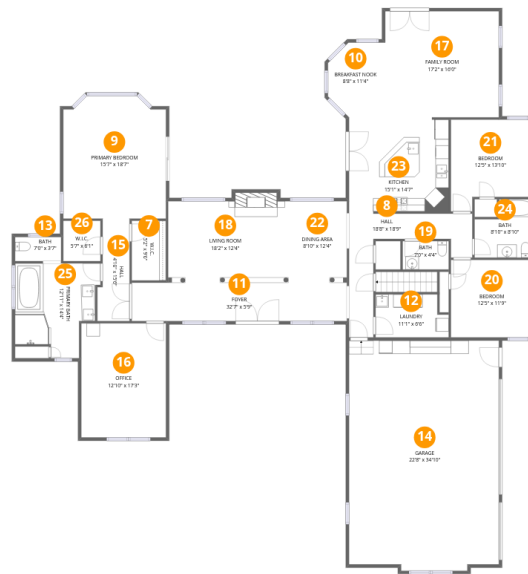
Total: 0sqft

Excluded: 2823sqft

#		Dimensions	sqft	Counted as living area
1	Storage	26'11" x 5'6"	148 sq. ft	No
2	Basement	27'5" x 26'2"	676 sq. ft	No
3	Crawl Space	25'11" x 16'1"	371 sq. ft	No
4	Crawl Space	22'10" x 51'9"	897 sq. ft	No
5	Basement	26'11" x 18'2"	489 sq. ft	No
6	Utility	26'11" x 9'11"	202 sq. ft	No

# Home data report

375 East County Road, Drums, Pennsylvania 18222, United States



## Room dimensions

Floor 2

Total:2692sqft Excluded: 790sqft

#		Dimensions	sqft	Counted as living area
7	W.I.C.	5'2" x 9'0"	47 sq. ft	Yes
8	Hall	18'8" x 18'9"	136 sq. ft	Yes
9	Primary Bedroom	15'7" x 18'7"	277 sq. ft	Yes
10	Breakfast Nook	8'8" x 11'4"	89 sq. ft	Yes
11	Foyer	32'7" x 5'9"	190 sq. ft	Yes
12	Laundry	11'1" x 6'6"	67 sq. ft	Yes
13	Bath	7'0" x 3'7"	25 sq. ft	Yes
14	Garage	22'8" x 34'10"	779 sq. ft	No
15	Hall	4'10" x 15'6"	67 sq. ft	Yes
16	Office	12'10" x 17'3"	222 sq. ft	Yes
17	Family Room	17'2" x 16'0"	277 sq. ft	Yes

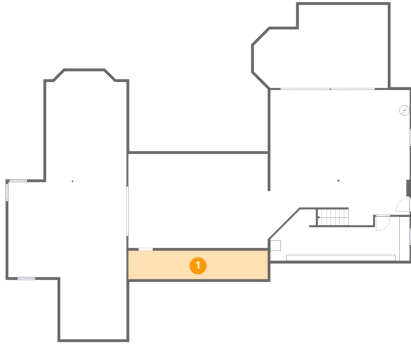
Home data report

**375 East County Road, Drums, Pennsylvania 18222, United States**

#		Dimensions	sqft	Counted as living area
18	Living Room	18'2" x 12'4"	233 sq. ft	Yes
19	Bath	7'0" x 4'4"	30 sq. ft	Yes
20	Bedroom	12'5" x 11'9"	146 sq. ft	Yes
21	Bedroom	12'5" x 13'10"	153 sq. ft	Yes
22	Dining Area	8'10" x 12'4"	109 sq. ft	Yes
23	Kitchen	15'1" x 14'7"	215 sq. ft	Yes
24	Bath	8'10" x 8'10"	67 sq. ft	Yes
25	Primary Bath	12'11" x 14'4"	152 sq. ft	Yes
26	W.I.C.	5'7" x 6'1"	34 sq. ft	Yes

# 375 East County Road, Drums, Pennsylvania 18222, United States

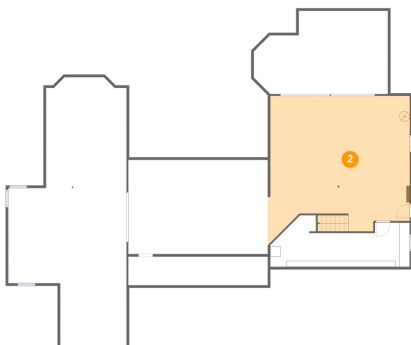
## 1 Floor 1 - Storage



Dimensions: 26'11" x 5'6"  
Area: 148 sq. ft  
Counted as living area: No

Heated: No  
Finished: No  
Enclosed: No  
Contiguous: Yes  
Permitted: Yes  
Wet space: No  
Addition: No  
Conversion: No

## 2 Floor 1 - Basement

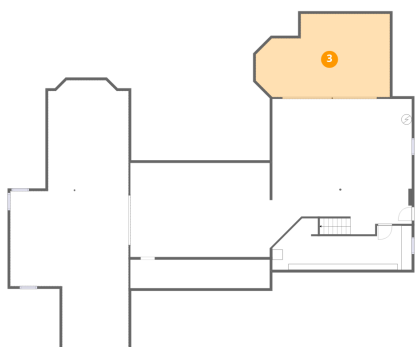


Dimensions: 27'5" x 26'2"  
Area: 676 sq. ft  
Counted as living area: No

Heated: Yes  
Finished: No  
Enclosed: Yes  
Contiguous: Yes  
Permitted: Yes  
Wet space: No  
Addition: No  
Conversion: No

# 375 East County Road, Drums, Pennsylvania 18222, United States

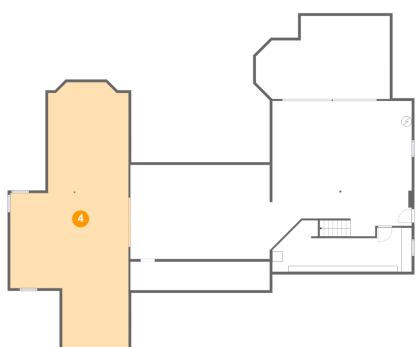
## 3 Floor 1 - Crawl Space



Dimensions: 25'11" x 16'1"  
Area: 371 sq. ft  
Counted as living area: No

Heated: No  
Finished: No  
Enclosed: No  
Contiguous: Yes  
Permitted: No  
Wet space: No  
Addition: No  
Conversion: No

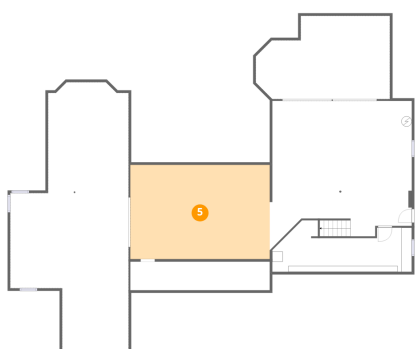
## 4 Floor 1 - Crawl Space



Dimensions: 22'10" x 51'9"  
Area: 897 sq. ft  
Counted as living area: No

Heated: No  
Finished: No  
Enclosed: No  
Contiguous: Yes  
Permitted: No  
Wet space: No  
Addition: No  
Conversion: No

## 5 Floor 1 - Basement

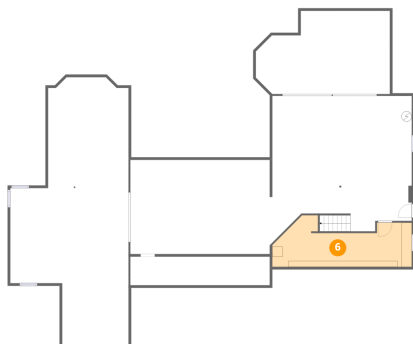


Dimensions: 26'11" x 18'2"  
Area: 489 sq. ft  
Counted as living area: No

Heated: Yes  
Finished: No  
Enclosed: Yes  
Contiguous: Yes  
Permitted: Yes  
Wet space: No  
Addition: No  
Conversion: No

# 375 East County Road, Drums, Pennsylvania 18222, United States

## 6 Floor 1 - Utility



Dimensions: 26'11" x 9'11"

Area: 202 sq. ft

Counted as living area: No

Heated: Yes

Finished: No

Enclosed: Yes

Contiguous: Yes

Permitted: Yes

Wet space: No

Addition: No

Conversion: No

## 7 Floor 2 - W.I.C.



Dimensions: 5'2" x 9'0"

Area: 47 sq. ft

Counted as living area: Yes

Heated: Yes

Finished: Yes

Enclosed: Yes

Contiguous: Yes

Permitted: Yes

Wet space: No

Addition: No

Conversion: No

## 8 Floor 2 - Hall



Dimensions: 18'8" x 18'9"

Area: 136 sq. ft

Counted as living area: Yes

Heated: Yes

Finished: Yes

Enclosed: Yes

Contiguous: Yes

Permitted: Yes

Wet space: No

Addition: No

Conversion: No

# 375 East County Road, Drums, Pennsylvania 18222, United States

## 9 Floor 2 - Primary Bedroom



Dimensions: 15'7" x 18'7"  
Area: 277 sq. ft  
Counted as living area: Yes

Heated: Yes  
Finished: Yes  
Enclosed: Yes  
Contiguous: Yes  
Permitted: Yes  
Wet space: No  
Addition: No  
Conversion: No

## 10 Floor 2 - Breakfast Nook



Dimensions: 8'8" x 11'4"  
Area: 89 sq. ft  
Counted as living area: Yes

Heated: Yes  
Finished: Yes  
Enclosed: Yes  
Contiguous: Yes  
Permitted: Yes  
Wet space: No  
Addition: No  
Conversion: No

## 11 Floor 2 - Foyer



Dimensions: 32'7" x 5'9"  
Area: 190 sq. ft  
Counted as living area: Yes

Heated: Yes  
Finished: Yes  
Enclosed: Yes  
Contiguous: Yes  
Permitted: Yes  
Wet space: No  
Addition: No  
Conversion: No

# 375 East County Road, Drums, Pennsylvania 18222, United States

## 12 Floor 2 - Laundry



Dimensions: 11'1" x 6'6"  
Area: 67 sq. ft  
Counted as living area: Yes

Heated: Yes  
Finished: Yes  
Enclosed: Yes  
Contiguous: Yes  
Permitted: Yes  
Wet space: No  
Addition: No  
Conversion: No

## 13 Floor 2 - Bath



Dimensions: 7'0" x 3'7"  
Area: 25 sq. ft  
Counted as living area: Yes

Heated: Yes  
Finished: Yes  
Enclosed: Yes  
Contiguous: Yes  
Permitted: Yes  
Wet space: Yes  
Addition: No  
Conversion: No

## 14 Floor 2 - Garage



Dimensions: 22'8" x 34'10"  
Area: 779 sq. ft  
Counted as living area: No

Heated: No  
Finished: No  
Enclosed: Yes  
Contiguous: Yes  
Permitted: Yes  
Wet space: No  
Addition: No  
Conversion: No

# 375 East County Road, Drums, Pennsylvania 18222, United States

## 15 Floor 2 - Hall



Dimensions: 4'10" x 15'6"  
Area: 67 sq. ft  
Counted as living area: Yes

Heated: Yes  
Finished: Yes  
Enclosed: Yes  
Contiguous: Yes  
Permitted: Yes  
Wet space: No  
Addition: No  
Conversion: No

## 16 Floor 2 - Office



Dimensions: 12'10" x 17'3"  
Area: 222 sq. ft  
Counted as living area: Yes

Heated: Yes  
Finished: Yes  
Enclosed: Yes  
Contiguous: Yes  
Permitted: Yes  
Wet space: No  
Addition: No  
Conversion: No

## 17 Floor 2 - Family Room



Dimensions: 17'2" x 16'0"  
Area: 277 sq. ft  
Counted as living area: Yes

Heated: Yes  
Finished: Yes  
Enclosed: Yes  
Contiguous: Yes  
Permitted: Yes  
Wet space: No  
Addition: No  
Conversion: No

375 East County Road, Drums, Pennsylvania 18222, United States

**18** Floor 2 - Living Room



Dimensions: 18'2" x 12'4"  
Area: 233 sq. ft  
Counted as living area: Yes

Heated: Yes  
Finished: Yes  
Enclosed: Yes  
Contiguous: Yes  
Permitted: Yes  
Wet space: No  
Addition: No  
Conversion: No

**19** Floor 2 - Bath



Dimensions: 7'0" x 4'4"  
Area: 30 sq. ft  
Counted as living area: Yes

Heated: Yes  
Finished: Yes  
Enclosed: Yes  
Contiguous: Yes  
Permitted: Yes  
Wet space: Yes  
Addition: No  
Conversion: No

**20** Floor 2 - Bedroom



Dimensions: 12'5" x 11'9"  
Area: 146 sq. ft  
Counted as living area: Yes

Heated: Yes  
Finished: Yes  
Enclosed: Yes  
Contiguous: Yes  
Permitted: Yes  
Wet space: No  
Addition: No  
Conversion: No

375 East County Road, Drums, Pennsylvania 18222, United States

**21** Floor 2 - Bedroom



Dimensions: 12'5" x 13'10"  
Area: 153 sq. ft  
Counted as living area: Yes

Heated: Yes  
Finished: Yes  
Enclosed: Yes  
Contiguous: Yes  
Permitted: Yes  
Wet space: No  
Addition: No  
Conversion: No

**22** Floor 2 - Dining Area



Dimensions: 8'10" x 12'4"  
Area: 109 sq. ft  
Counted as living area: Yes

Heated: Yes  
Finished: Yes  
Enclosed: Yes  
Contiguous: Yes  
Permitted: Yes  
Wet space: No  
Addition: No  
Conversion: No

**23** Floor 2 - Kitchen



Dimensions: 15'1" x 14'7"  
Area: 215 sq. ft  
Counted as living area: Yes

Heated: Yes  
Finished: Yes  
Enclosed: Yes  
Contiguous: Yes  
Permitted: Yes  
Wet space: No  
Addition: No  
Conversion: No

375 East County Road, Drums, Pennsylvania 18222, United States

**24** Floor 2 - Bath



Dimensions: 8'10" x 8'10"  
Area: 67 sq. ft  
Counted as living area: Yes

Heated: Yes  
Finished: Yes  
Enclosed: Yes  
Contiguous: Yes  
Permitted: Yes  
Wet space: Yes  
Addition: No  
Conversion: No

**25** Floor 2 - Primary Bath



Dimensions: 12'11" x 14'4"  
Area: 152 sq. ft  
Counted as living area: Yes

Heated: Yes  
Finished: Yes  
Enclosed: Yes  
Contiguous: Yes  
Permitted: Yes  
Wet space: Yes  
Addition: No  
Conversion: No

**26** Floor 2 - W.I.C.



Dimensions: 5'7" x 6'1"  
Area: 34 sq. ft  
Counted as living area: Yes

Heated: Yes  
Finished: Yes  
Enclosed: Yes  
Contiguous: Yes  
Permitted: Yes  
Wet space: No  
Addition: No  
Conversion: No