

Home data report

6126 Kingsgate Drive, Burlington, Boone County, Kentucky,
United States, 41005



Total Area: 2725 sq. ft

Basement 1: 713 sq. ft, 1st Floor: 1035 sq. ft, 2nd Floor: 977 sq. ft

Excluded: Storage 58 sq. ft, Basement 247 sq. ft, Garage 381 sq. ft, Fireplace 11 sq. ft,
Walls: 242 sq. ft

Property summary



Home data report

**6126 Kingsgate Drive, Burlington, Boone County, Kentucky,
United States, 41005**



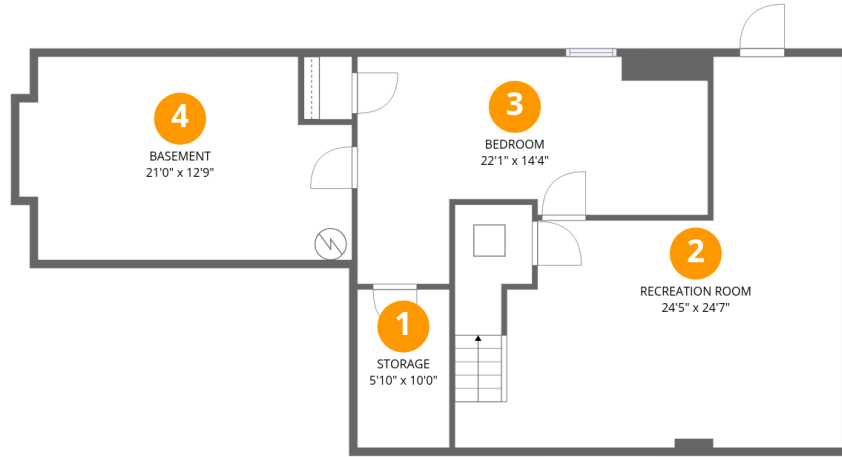
1
Half baths



1
Garages

Home data report

6126 Kingsgate Drive, Burlington, Boone County, Kentucky,
United States, 41005



Room dimensions

Floor 1 Below grade

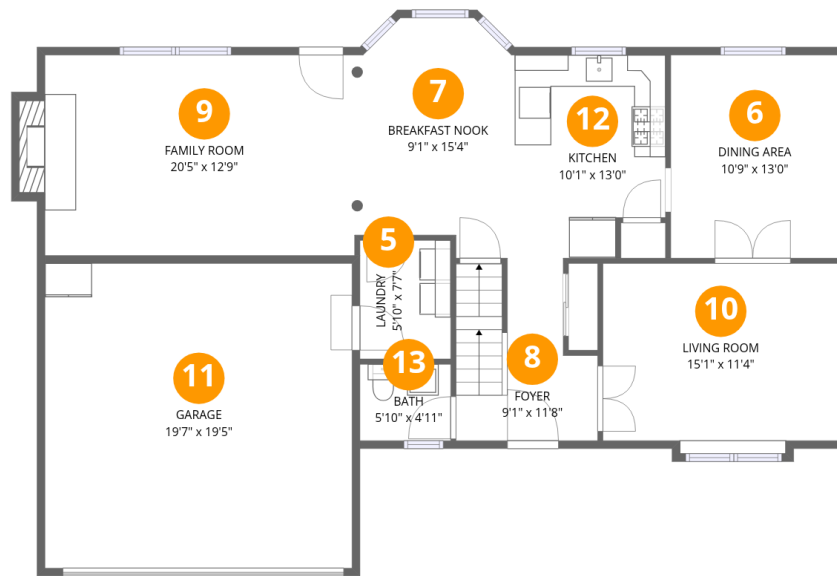
Total:713sqft

Excluded: 305sqft

#		Dimensions	sqft	Counted as living area
1	Storage	5'10" x 10'0"	58 sq. ft	No
2	Recreation Room	24'5" x 24'7"	601 sq. ft	Yes
3	Bedroom	22'1" x 14'4"	316 sq. ft	Yes
4	Basement	21'0" x 12'9"	268 sq. ft	No

Home data report

6126 Kingsgate Drive, Burlington, Boone County, Kentucky,
United States, 41005



Room dimensions

Floor 2

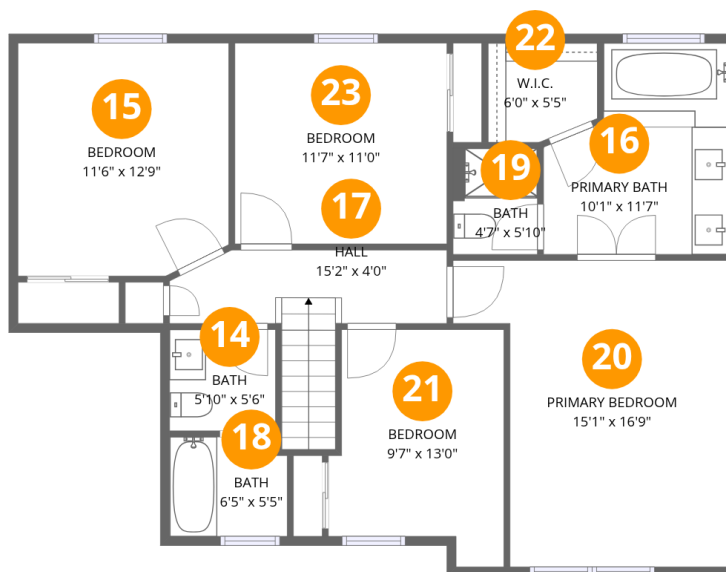
Total:1035sqft

Excluded: 392sqft

#		Dimensions	sqft	Counted as living area
5	Laundry	5'10" x 7'7"	44 sq. ft	Yes
6	Dining Area	10'9" x 13'0"	139 sq. ft	Yes
7	Breakfast Nook	9'1" x 15'4"	139 sq. ft	Yes
8	Foyer	9'1" x 11'8"	105 sq. ft	Yes
9	Family Room	20'5" x 12'9"	261 sq. ft	Yes
10	Living Room	15'1" x 11'4"	170 sq. ft	Yes
11	Garage	19'7" x 19'5"	381 sq. ft	No
12	Kitchen	10'1" x 13'0"	132 sq. ft	Yes
13	Bath	5'10" x 4'11"	28 sq. ft	Yes

Home data report

6126 Kingsgate Drive, Burlington, Boone County, Kentucky, United States, 41005



Room dimensions

Floor 3

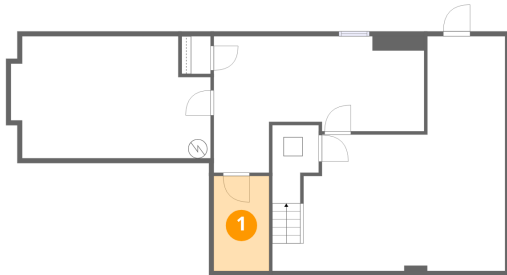
Total:977sqft

Excluded: 0sqft

#		Dimensions	sqft	Counted as living area
14	Bath	5'10" x 5'6"	32 sq. ft	Yes
15	Bedroom	11'6" x 12'9"	147 sq. ft	Yes
16	Primary Bath	10'1" x 11'7"	117 sq. ft	Yes
17	Hall	15'2" x 4'0"	61 sq. ft	Yes
18	Bath	6'5" x 5'5"	35 sq. ft	Yes
19	Bath	4'7" x 5'10"	27 sq. ft	Yes
20	Primary Bedroom	15'1" x 16'9"	252 sq. ft	Yes
21	Bedroom	9'7" x 13'0"	125 sq. ft	Yes
22	W.I.C.	6'0" x 5'5"	33 sq. ft	Yes
23	Bedroom	11'7" x 11'0"	128 sq. ft	Yes

6126 Kingsgate Drive, Burlington, Boone County, Kentucky,
United States, 41005

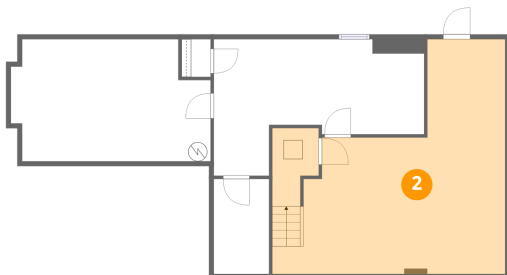
1 Floor 1 - Storage



Dimensions: 5'10" x 10'0"
Area: 58 sq. ft
Counted as living area: No

Heated: No
Finished: No
Enclosed: No
Contiguous: Yes
Permitted: Yes
Wet space: No
Addition: No
Conversion: No

2 Floor 1 - Recreation Room



Dimensions: 24'5" x 24'7"
Area: 601 sq. ft
Counted as living area: Yes

Heated: Yes
Finished: Yes
Enclosed: Yes
Contiguous: Yes
Permitted: Yes
Wet space: No
Addition: No
Conversion: No

6126 Kingsgate Drive, Burlington, Boone County, Kentucky,
United States, 41005

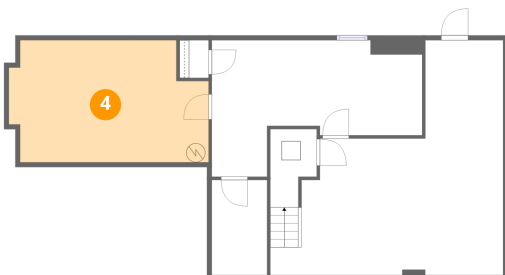
3 Floor 1 - Bedroom



Dimensions: 22'1" x 14'4"
Area: 316 sq. ft
Counted as living area: Yes

Heated: Yes
Finished: Yes
Enclosed: Yes
Contiguous: Yes
Permitted: Yes
Wet space: No
Addition: No
Conversion: No

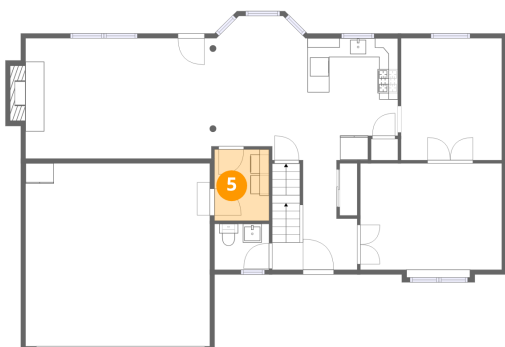
4 Floor 1 - Basement



Dimensions: 21'0" x 12'9"
Area: 268 sq. ft
Counted as living area: No

Heated: Yes
Finished: No
Enclosed: Yes
Contiguous: Yes
Permitted: Yes
Wet space: No
Addition: No
Conversion: No

5 Floor 2 - Laundry

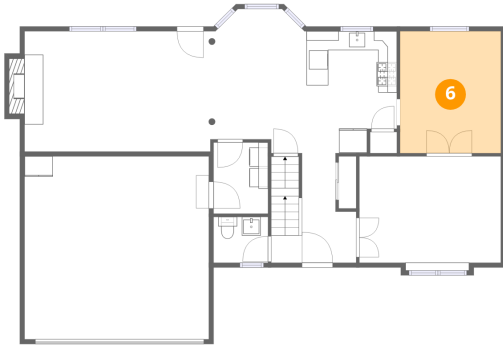


Dimensions: 5'10" x 7'7"
Area: 44 sq. ft
Counted as living area: Yes

Heated: Yes
Finished: Yes
Enclosed: Yes
Contiguous: Yes
Permitted: Yes
Wet space: No
Addition: No
Conversion: No

6126 Kingsgate Drive, Burlington, Boone County, Kentucky,
United States, 41005

6 Floor 2 - Dining Area



Dimensions: 10'9" x 13'0"
Area: 139 sq. ft
Counted as living area: Yes

Heated: Yes
Finished: Yes
Enclosed: Yes
Contiguous: Yes
Permitted: Yes
Wet space: No
Addition: No
Conversion: No

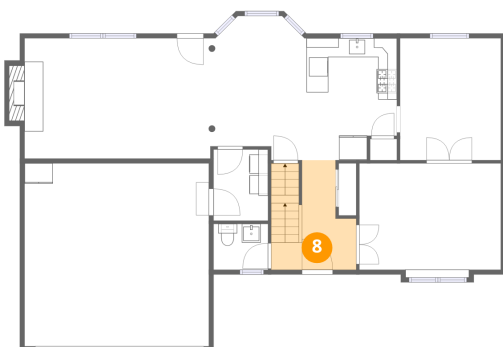
7 Floor 2 - Breakfast Nook



Dimensions: 9'1" x 15'4"
Area: 139 sq. ft
Counted as living area: Yes

Heated: Yes
Finished: Yes
Enclosed: Yes
Contiguous: Yes
Permitted: Yes
Wet space: No
Addition: No
Conversion: No

8 Floor 2 - Foyer

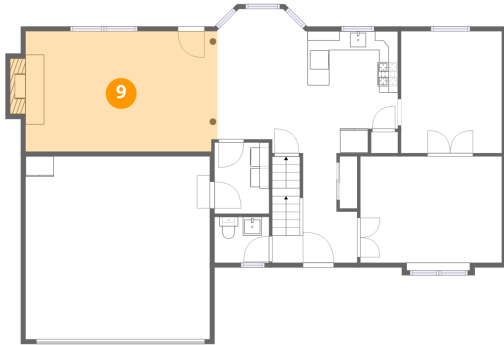


Dimensions: 9'1" x 11'8"
Area: 105 sq. ft
Counted as living area: Yes

Heated: Yes
Finished: Yes
Enclosed: Yes
Contiguous: Yes
Permitted: Yes
Wet space: No
Addition: No
Conversion: No

6126 Kingsgate Drive, Burlington, Boone County, Kentucky,
United States, 41005

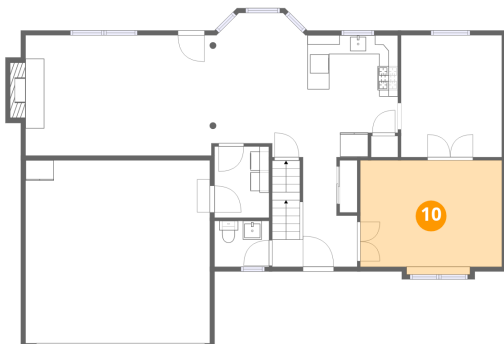
9 Floor 2 - Family Room



Dimensions: 20'5" x 12'9"
Area: 261 sq. ft
Counted as living area: Yes

Heated: Yes
Finished: Yes
Enclosed: Yes
Contiguous: Yes
Permitted: Yes
Wet space: No
Addition: No
Conversion: No

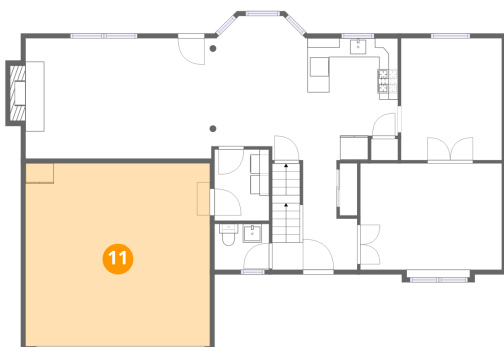
10 Floor 2 - Living Room



Dimensions: 15'1" x 11'4"
Area: 170 sq. ft
Counted as living area: Yes

Heated: Yes
Finished: Yes
Enclosed: Yes
Contiguous: Yes
Permitted: Yes
Wet space: No
Addition: No
Conversion: No

11 Floor 2 - Garage

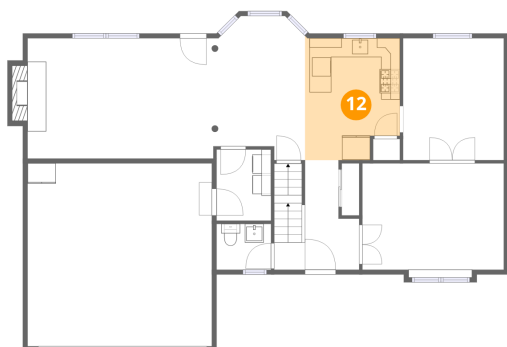


Dimensions: 19'7" x 19'5"
Area: 381 sq. ft
Counted as living area: No

Heated: No
Finished: No
Enclosed: Yes
Contiguous: Yes
Permitted: Yes
Wet space: No
Addition: No
Conversion: No

6126 Kingsgate Drive, Burlington, Boone County, Kentucky,
United States, 41005

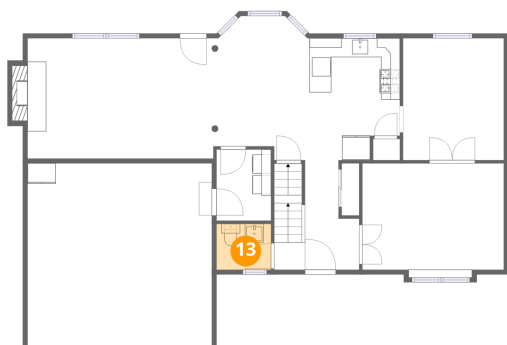
12 Floor 2 - Kitchen



Dimensions: 10'1" x 13'0"
Area: 132 sq. ft
Counted as living area: Yes

Heated: Yes
Finished: Yes
Enclosed: Yes
Contiguous: Yes
Permitted: Yes
Wet space: No
Addition: No
Conversion: No

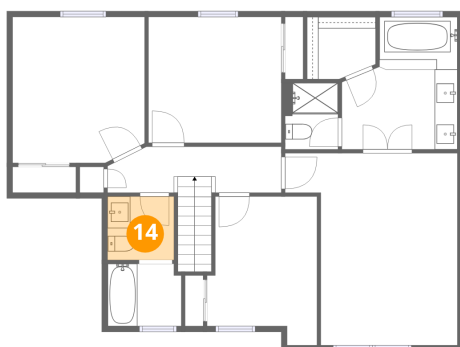
13 Floor 2 - Bath



Dimensions: 5'10" x 4'11"
Area: 28 sq. ft
Counted as living area: Yes

Heated: Yes
Finished: Yes
Enclosed: Yes
Contiguous: Yes
Permitted: Yes
Wet space: Yes
Addition: No
Conversion: No

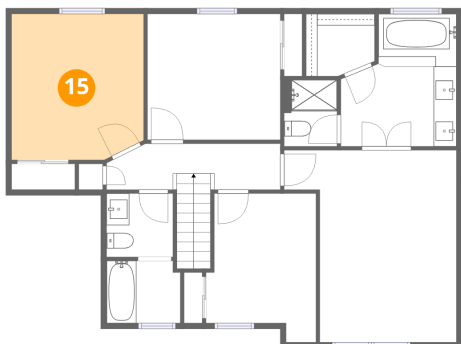
14 Floor 3 - Bath



Dimensions: 5'10" x 5'6"
Area: 32 sq. ft
Counted as living area: Yes

Heated: Yes
Finished: Yes
Enclosed: Yes
Contiguous: Yes
Permitted: Yes
Wet space: Yes
Addition: No
Conversion: No

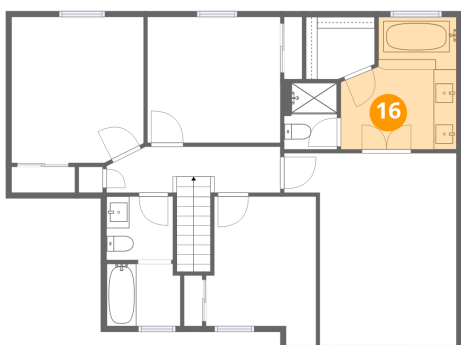
15 Floor 3 - Bedroom



Dimensions: 11'6" x 12'9"
Area: 147 sq. ft
Counted as living area: Yes

Heated: Yes
Finished: Yes
Enclosed: Yes
Contiguous: Yes
Permitted: Yes
Wet space: No
Addition: No
Conversion: No

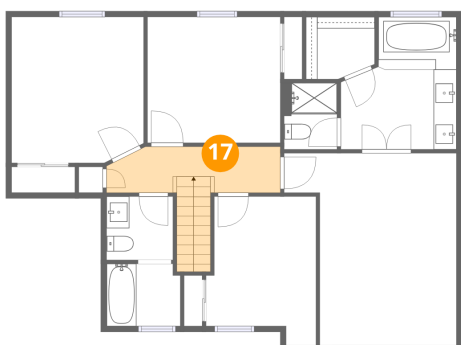
16 Floor 3 - Primary Bath



Dimensions: 10'1" x 11'7"
Area: 117 sq. ft
Counted as living area: Yes

Heated: Yes
Finished: Yes
Enclosed: Yes
Contiguous: Yes
Permitted: Yes
Wet space: Yes
Addition: No
Conversion: No

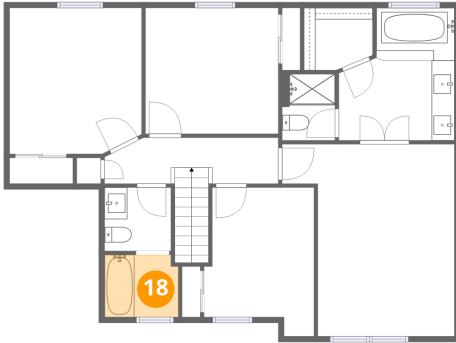
17 Floor 3 - Hall



Dimensions: 15'2" x 4'0"
Area: 61 sq. ft
Counted as living area: Yes

Heated: Yes
Finished: Yes
Enclosed: Yes
Contiguous: Yes
Permitted: Yes
Wet space: No
Addition: No
Conversion: No

18 Floor 3 - Bath



Dimensions: 6'5" x 5'5"
Area: 35 sq. ft
Counted as living area: Yes

Heated: Yes
Finished: Yes
Enclosed: Yes
Contiguous: Yes
Permitted: Yes
Wet space: Yes
Addition: No
Conversion: No

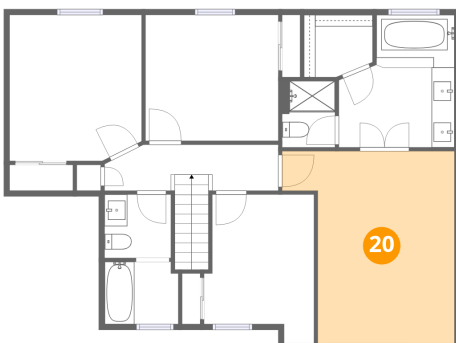
19 Floor 3 - Bath



Dimensions: 4'7" x 5'10"
Area: 27 sq. ft
Counted as living area: Yes

Heated: Yes
Finished: Yes
Enclosed: Yes
Contiguous: Yes
Permitted: Yes
Wet space: Yes
Addition: No
Conversion: No

20 Floor 3 - Primary Bedroom



Dimensions: 15'1" x 16'9"
Area: 252 sq. ft
Counted as living area: Yes

Heated: Yes
Finished: Yes
Enclosed: Yes
Contiguous: Yes
Permitted: Yes
Wet space: No
Addition: No
Conversion: No

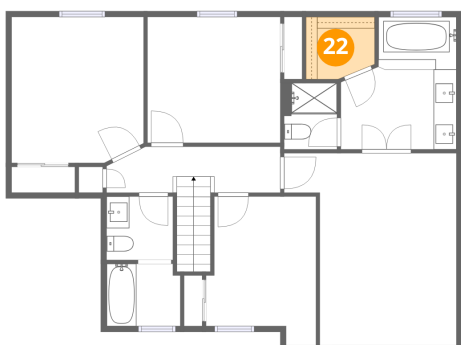
21 Floor 3 - Bedroom



Dimensions: 9'7" x 13'0"
Area: 125 sq. ft
Counted as living area: Yes

Heated: Yes
Finished: Yes
Enclosed: Yes
Contiguous: Yes
Permitted: Yes
Wet space: No
Addition: No
Conversion: No

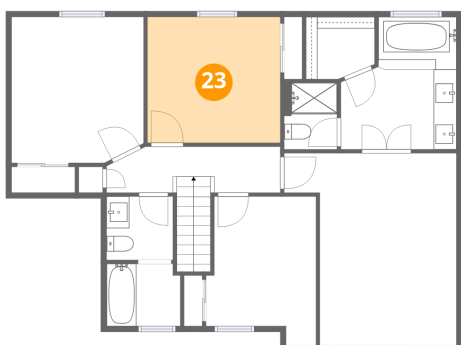
22 Floor 3 - W.I.C.



Dimensions: 6'0" x 5'5"
Area: 33 sq. ft
Counted as living area: Yes

Heated: Yes
Finished: Yes
Enclosed: Yes
Contiguous: Yes
Permitted: Yes
Wet space: No
Addition: No
Conversion: No

23 Floor 3 - Bedroom



Dimensions: 11'7" x 11'0"
Area: 128 sq. ft
Counted as living area: Yes

Heated: Yes
Finished: Yes
Enclosed: Yes
Contiguous: Yes
Permitted: Yes
Wet space: No
Addition: No
Conversion: No