

Home data report

444 McElheny Rd, Glenshaw, PA, US



Total Area: 4317 sq. ft

1st Floor: 1762 sq. ft, 2nd Floor: 2555 sq. ft

Excluded: Utility 254 sq. ft, Garage 574 sq. ft, Elevator 48 sq. ft, Patio 241 sq. ft, Walls: 261 sq. ft

Property summary

 **2** Floors

 **6** Bedrooms

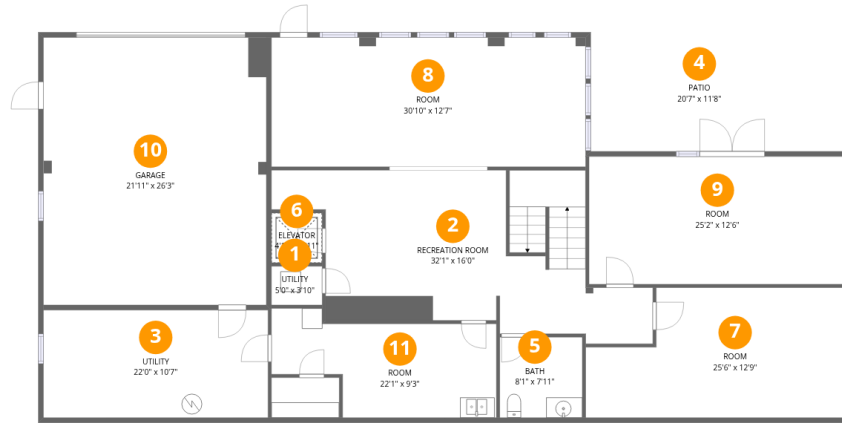
 **2** Bathrooms

Home data report

444 McElheny Rd, Glenshaw, PA, US

 **1**
Half baths

 **1**
Garages



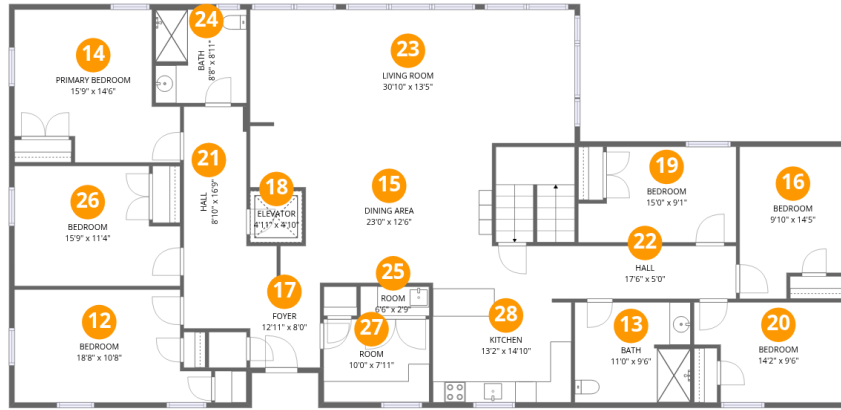
Room dimensions

Floor 1

Total:1762sqft

Excluded: 1093sqft

| # | | Dimensions | sqft | Counted as living area |
|----|-----------------|----------------|------------|------------------------|
| 1 | Utility | 5'0" x 3'10" | 19 sq. ft | No |
| 2 | Recreation Room | 32'1" x 16'0" | 515 sq. ft | Yes |
| 3 | Utility | 22'0" x 10'7" | 232 sq. ft | No |
| 4 | Patio | 20'7" x 11'8" | 240 sq. ft | No |
| 5 | Bath | 8'1" x 7'11" | 64 sq. ft | Yes |
| 6 | Elevator | 4'11" x 4'11" | 24 sq. ft | No |
| 7 | Room | 25'6" x 12'9" | 325 sq. ft | Yes |
| 8 | Room | 30'10" x 12'7" | 389 sq. ft | Yes |
| 9 | Room | 25'2" x 12'6" | 315 sq. ft | Yes |
| 10 | Garage | 21'11" x 26'3" | 574 sq. ft | No |
| 11 | Room | 22'1" x 9'3" | 204 sq. ft | Yes |



Room dimensions

Floor 2

Total:2555sqft Excluded: 24sqft

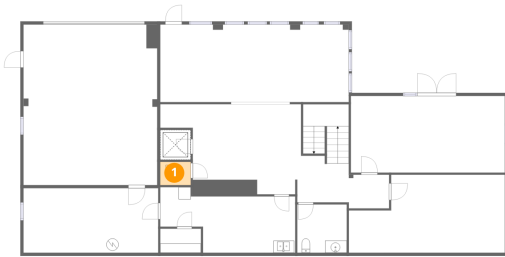
| # | | Dimensions | sqft | Counted as living area |
|----|-----------------|---------------|------------|------------------------|
| 12 | Bedroom | 18'8" x 10'8" | 199 sq. ft | Yes |
| 13 | Bath | 11'0" x 9'6" | 104 sq. ft | Yes |
| 14 | Primary Bedroom | 15'9" x 14'6" | 229 sq. ft | Yes |
| 15 | Dining Area | 23'0" x 12'6" | 287 sq. ft | Yes |
| 16 | Bedroom | 9'10" x 14'5" | 142 sq. ft | Yes |
| 17 | Foyer | 12'11" x 8'0" | 104 sq. ft | Yes |
| 18 | Elevator | 4'11" x 4'10" | 24 sq. ft | No |
| 19 | Bedroom | 15'0" x 9'1" | 136 sq. ft | Yes |
| 20 | Bedroom | 14'2" x 9'6" | 135 sq. ft | Yes |
| 21 | Hall | 8'10" x 16'9" | 148 sq. ft | Yes |
| 22 | Hall | 17'6" x 5'0" | 88 sq. ft | Yes |

Home data report

444 McElheny Rd,Glenshaw,PA,US

| # | | Dimensions | sqft | Counted as living area |
|----|-------------|----------------|------------|------------------------|
| 23 | Living Room | 30'10" x 13'5" | 412 sq. ft | Yes |
| 24 | Bath | 8'8" x 8'11" | 77 sq. ft | Yes |
| 25 | Room | 6'6" x 2'9" | 18 sq. ft | Yes |
| 26 | Bedroom | 15'9" x 11'4" | 178 sq. ft | Yes |
| 27 | Room | 10'0" x 7'11" | 79 sq. ft | Yes |
| 28 | Kitchen | 13'2" x 14'10" | 195 sq. ft | Yes |

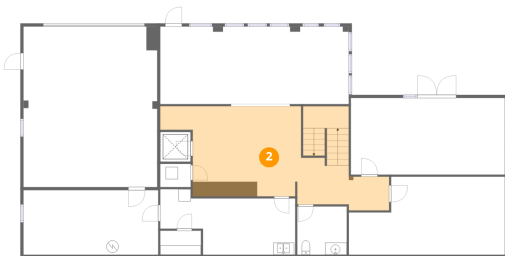
1 Floor 1 - Utility



Dimensions: 5'0" x 3'10"
Area: 19 sq. ft
Counted as living area: No

Heated: Yes
Finished: No
Enclosed: Yes
Contiguous: Yes
Permitted: Yes
Wet space: No
Addition: No
Conversion: No

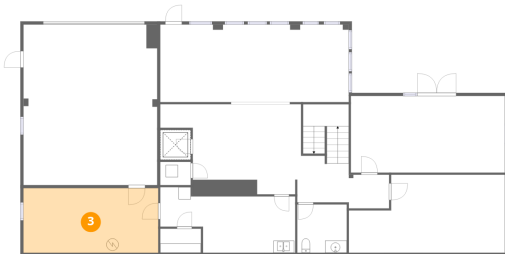
2 Floor 1 - Recreation Room



Dimensions: 32'1" x 16'0"
Area: 515 sq. ft
Counted as living area: Yes

Heated: Yes
Finished: Yes
Enclosed: Yes
Contiguous: Yes
Permitted: Yes
Wet space: No
Addition: No
Conversion: No

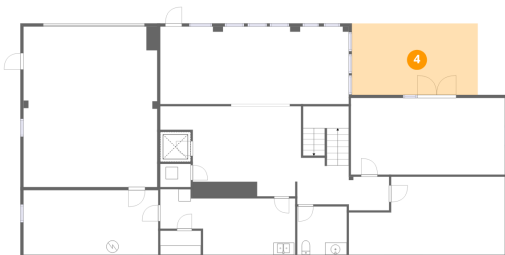
3 Floor 1 - Utility



Dimensions: 22'0" x 10'7"
Area: 232 sq. ft
Counted as living area: No

Heated: Yes
Finished: No
Enclosed: Yes
Contiguous: Yes
Permitted: Yes
Wet space: No
Addition: No
Conversion: No

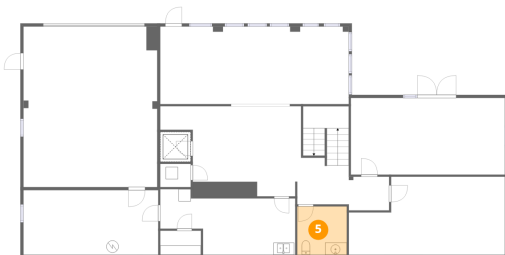
4 Floor 1 - Patio



Dimensions: 20'7" x 11'8"
Area: 240 sq. ft
Counted as living area: No

Heated: No
Finished: No
Enclosed: No
Contiguous: Yes
Permitted: Yes
Wet space: No
Addition: No
Conversion: No

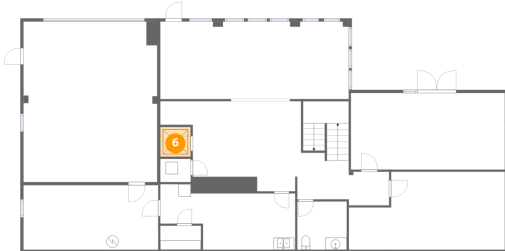
5 Floor 1 - Bath



Dimensions: 8'1" x 7'11"
Area: 64 sq. ft
Counted as living area: Yes

Heated: Yes
Finished: Yes
Enclosed: Yes
Contiguous: Yes
Permitted: Yes
Wet space: Yes
Addition: No
Conversion: No

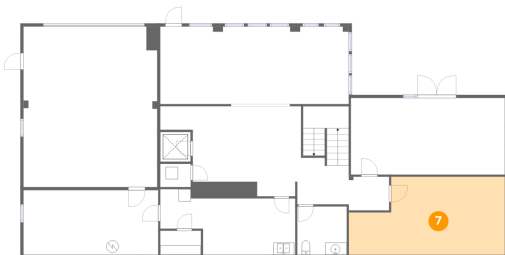
6 Floor 1 - Elevator



Dimensions: 4'11" x 4'11"
Area: 24 sq. ft
Counted as living area: No

Heated: No
Finished: No
Enclosed: Yes
Contiguous: Yes
Permitted: Yes
Wet space: No
Addition: No
Conversion: No

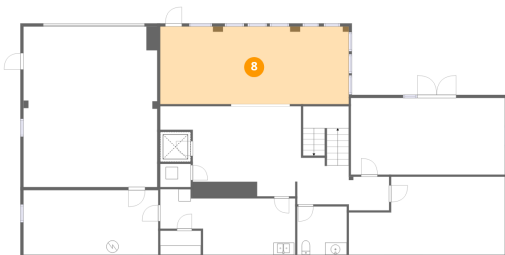
7 Floor 1 - Room



Dimensions: 25'6" x 12'9"
Area: 325 sq. ft
Counted as living area: Yes

Heated: Yes
Finished: Yes
Enclosed: Yes
Contiguous: Yes
Permitted: Yes
Wet space: No
Addition: No
Conversion: No

8 Floor 1 - Room



Dimensions: 30'10" x 12'7"
Area: 389 sq. ft
Counted as living area: Yes

Heated: Yes
Finished: Yes
Enclosed: Yes
Contiguous: Yes
Permitted: Yes
Wet space: No
Addition: No
Conversion: No

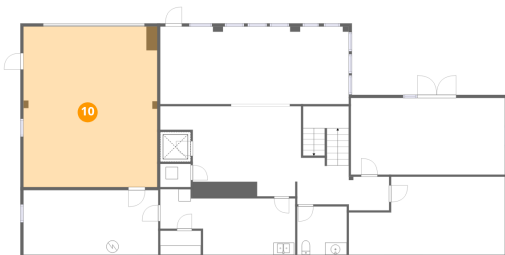
9 Floor 1 - Room



Dimensions: 25'2" x 12'6"
Area: 315 sq. ft
Counted as living area: Yes

Heated: Yes
Finished: Yes
Enclosed: Yes
Contiguous: Yes
Permitted: Yes
Wet space: No
Addition: No
Conversion: No

10 Floor 1 - Garage



Dimensions: 21'11" x 26'3"
Area: 574 sq. ft
Counted as living area: No

Heated: No
Finished: No
Enclosed: Yes
Contiguous: Yes
Permitted: Yes
Wet space: No
Addition: No
Conversion: No

11 Floor 1 - Room



Dimensions: 22'1" x 9'3"
Area: 204 sq. ft
Counted as living area: Yes

Heated: Yes
Finished: Yes
Enclosed: Yes
Contiguous: Yes
Permitted: Yes
Wet space: No
Addition: No
Conversion: No

12 Floor 2 - Bedroom



Dimensions: 18'8" x 10'8"
Area: 199 sq. ft
Counted as living area: Yes

Heated: Yes
Finished: Yes
Enclosed: Yes
Contiguous: Yes
Permitted: Yes
Wet space: No
Addition: No
Conversion: No

13 Floor 2 - Bath



Dimensions: 11'0" x 9'6"
Area: 104 sq. ft
Counted as living area: Yes

Heated: Yes
Finished: Yes
Enclosed: Yes
Contiguous: Yes
Permitted: Yes
Wet space: Yes
Addition: No
Conversion: No

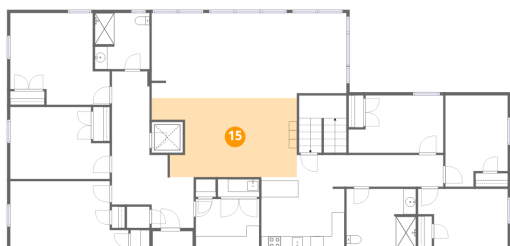
14 Floor 2 - Primary Bedroom



Dimensions: 15'9" x 14'6"
Area: 229 sq. ft
Counted as living area: Yes

Heated: Yes
Finished: Yes
Enclosed: Yes
Contiguous: Yes
Permitted: Yes
Wet space: No
Addition: No
Conversion: No

15 Floor 2 - Dining Area



Dimensions: 23'0" x 12'6"
Area: 287 sq. ft
Counted as living area: Yes

Heated: Yes
Finished: Yes
Enclosed: Yes
Contiguous: Yes
Permitted: Yes
Wet space: No
Addition: No
Conversion: No

16 Floor 2 - Bedroom



Dimensions: 9'10" x 14'5"
Area: 142 sq. ft
Counted as living area: Yes

Heated: Yes
Finished: Yes
Enclosed: Yes
Contiguous: Yes
Permitted: Yes
Wet space: No
Addition: No
Conversion: No

17 Floor 2 - Foyer



Dimensions: 12'11" x 8'0"
Area: 104 sq. ft
Counted as living area: Yes

Heated: Yes
Finished: Yes
Enclosed: Yes
Contiguous: Yes
Permitted: Yes
Wet space: No
Addition: No
Conversion: No

18 Floor 2 - Elevator



Dimensions: 4'11" x 4'10"
Area: 24 sq. ft
Counted as living area: No

Heated: No
Finished: No
Enclosed: Yes
Contiguous: Yes
Permitted: Yes
Wet space: No
Addition: No
Conversion: No

19 Floor 2 - Bedroom



Dimensions: 15'0" x 9'1"
Area: 136 sq. ft
Counted as living area: Yes

Heated: Yes
Finished: Yes
Enclosed: Yes
Contiguous: Yes
Permitted: Yes
Wet space: No
Addition: No
Conversion: No

20 Floor 2 - Bedroom



Dimensions: 14'2" x 9'6"
Area: 135 sq. ft
Counted as living area: Yes

Heated: Yes
Finished: Yes
Enclosed: Yes
Contiguous: Yes
Permitted: Yes
Wet space: No
Addition: No
Conversion: No

21 Floor 2 - Hall



Dimensions: 8'10" x 16'9"
Area: 148 sq. ft
Counted as living area: Yes

Heated: Yes
Finished: Yes
Enclosed: Yes
Contiguous: Yes
Permitted: Yes
Wet space: No
Addition: No
Conversion: No

22 Floor 2 - Hall



Dimensions: 17'6" x 5'0"
Area: 88 sq. ft
Counted as living area: Yes

Heated: Yes
Finished: Yes
Enclosed: Yes
Contiguous: Yes
Permitted: Yes
Wet space: No
Addition: No
Conversion: No

23 Floor 2 - Living Room



Dimensions: 30'10" x 13'5"
Area: 412 sq. ft
Counted as living area: Yes

Heated: Yes
Finished: Yes
Enclosed: Yes
Contiguous: Yes
Permitted: Yes
Wet space: No
Addition: No
Conversion: No

24 Floor 2 - Bath



Dimensions: 8'8" x 8'11"
Area: 77 sq. ft
Counted as living area: Yes

Heated: Yes
Finished: Yes
Enclosed: Yes
Contiguous: Yes
Permitted: Yes
Wet space: Yes
Addition: No
Conversion: No

25 Floor 2 - Room



Dimensions: 6'6" x 2'9"
Area: 18 sq. ft
Counted as living area: Yes

Heated: Yes
Finished: Yes
Enclosed: Yes
Contiguous: Yes
Permitted: Yes
Wet space: No
Addition: No
Conversion: No

26 Floor 2 - Bedroom



Dimensions: 15'9" x 11'4"
Area: 178 sq. ft
Counted as living area: Yes

Heated: Yes
Finished: Yes
Enclosed: Yes
Contiguous: Yes
Permitted: Yes
Wet space: No
Addition: No
Conversion: No

27 Floor 2 - Room



Dimensions: 10'0" x 7'11"
Area: 79 sq. ft
Counted as living area: Yes

Heated: Yes
Finished: Yes
Enclosed: Yes
Contiguous: Yes
Permitted: Yes
Wet space: No
Addition: No
Conversion: No

28 Floor 2 - Kitchen



Dimensions: 13'2" x 14'10"
Area: 195 sq. ft
Counted as living area: Yes

Heated: Yes
Finished: Yes
Enclosed: Yes
Contiguous: Yes
Permitted: Yes
Wet space: No
Addition: No
Conversion: No