

Home data report

808 South Van Buren Street, Batavia, Kane County, Illinois,
United States, 60510



Total Area: 2674 sq. ft

Basement: 690 sq. ft, 1st Floor: 1021 sq. ft, 2nd Floor: 963 sq. ft

Excluded: Storage 175 sq. ft, Utility 153 sq. ft, Garage 400 sq. ft, Fireplace 9 sq. ft, Open to below 55 sq. ft, Walls: 223 sq. ft

Property summary

 **3** Floors

 **4** Bedrooms

 **2** Bathrooms

Home data report

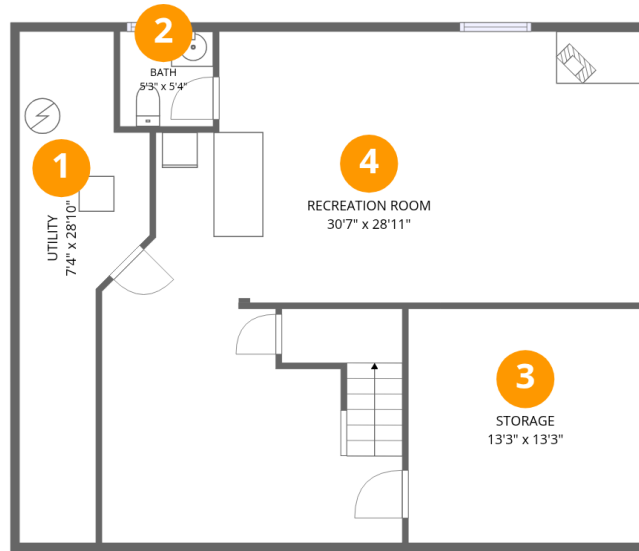
**808 South Van Buren Street, Batavia, Kane County, Illinois,
United States, 60510**

 **2**
Half baths

 **1**
Garages

Home data report

808 South Van Buren Street, Batavia, Kane County, Illinois,
United States, 60510



Room dimensions

Floor 1 Below grade

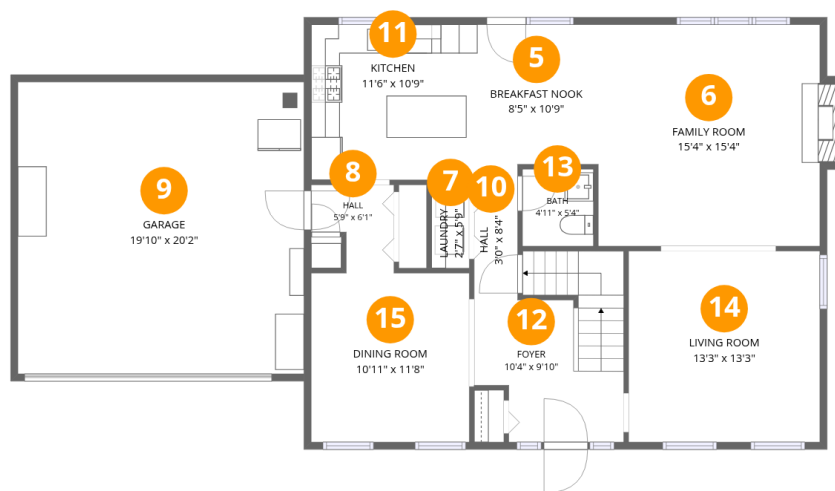
Total:690sqft

Excluded: 328sqft

#		Dimensions	sqft	Counted as living area
1	Utility	7'4" x 28'10"	153 sq. ft	No
2	Bath	5'3" x 5'4"	28 sq. ft	Yes
3	Storage	13'3" x 13'3"	175 sq. ft	No
4	Recreation Room	30'7" x 28'11"	632 sq. ft	Yes

Home data report

808 South Van Buren Street, Batavia, Kane County, Illinois, United States, 60510



Room dimensions

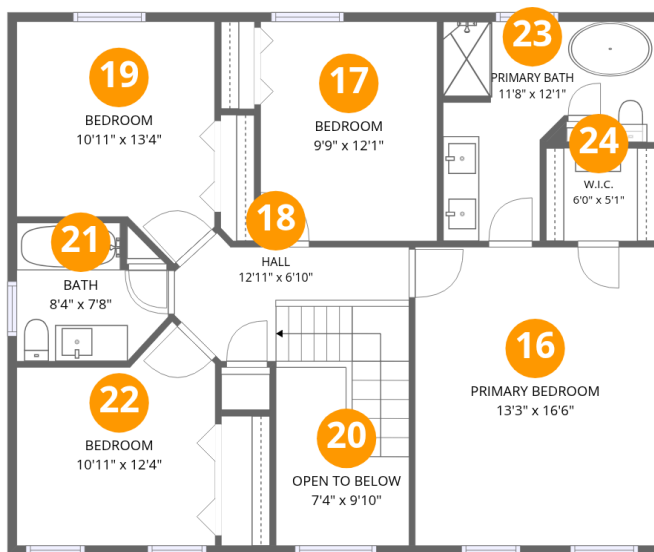
Floor 2

Total:1021sqft Excluded: 409sqft

#		Dimensions	sqft	Counted as living area
5	Breakfast Nook	8'5" x 10'9"	84 sq. ft	Yes
6	Family Room	15'4" x 15'4"	243 sq. ft	Yes
7	Laundry	2'7" x 5'9"	15 sq. ft	Yes
8	Hall	5'9" x 6'1"	28 sq. ft	Yes
9	Garage	19'10" x 20'2"	400 sq. ft	No
10	Hall	3'0" x 8'4"	25 sq. ft	Yes
11	Kitchen	11'6" x 10'9"	124 sq. ft	Yes
12	Foyer	10'4" x 9'10"	115 sq. ft	Yes
13	Bath	4'11" x 5'4"	26 sq. ft	Yes
14	Living Room	13'3" x 13'3"	175 sq. ft	Yes
15	Dining Room	10'11" x 11'8"	128 sq. ft	Yes

Home data report

808 South Van Buren Street, Batavia, Kane County, Illinois, United States, 60510



Room dimensions

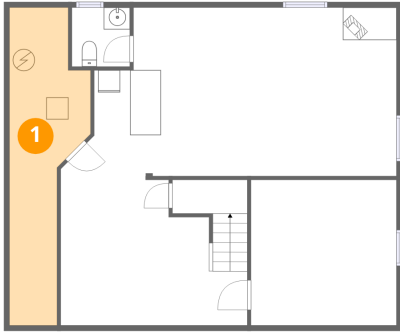
Floor 3

Total:963sqft Excluded: 55sqft

#		Dimensions	sqft	Counted as living area
16	Primary Bedroom	13'3" x 16'6"	218 sq. ft	Yes
17	Bedroom	9'9" x 12'1"	118 sq. ft	Yes
18	Hall	12'11" x 6'10"	97 sq. ft	Yes
19	Bedroom	10'11" x 13'4"	124 sq. ft	Yes
20	Open To Below	7'4" x 9'10"	55 sq. ft	No
21	Bath	8'4" x 7'8"	54 sq. ft	Yes
22	Bedroom	10'11" x 12'4"	114 sq. ft	Yes
23	Primary Bath	11'8" x 12'1"	101 sq. ft	Yes
24	W.I.C.	6'0" x 5'1"	31 sq. ft	Yes

808 South Van Buren Street, Batavia, Kane County, Illinois,
United States, 60510

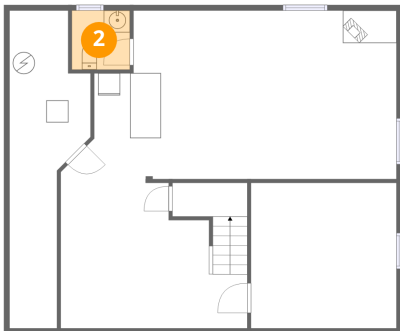
1 Floor 1 - Utility



Dimensions: 7'4" x 28'10"
Area: 153 sq. ft
Counted as living area: No

Heated: Yes
Finished: No
Enclosed: Yes
Contiguous: Yes
Permitted: Yes
Wet space: No
Addition: No
Conversion: No

2 Floor 1 - Bath

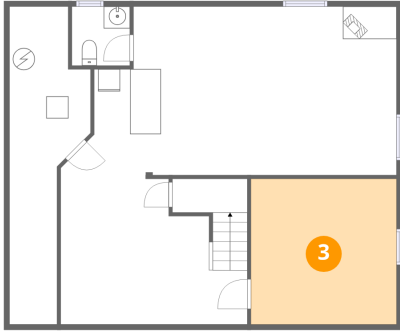


Dimensions: 5'3" x 5'4"
Area: 28 sq. ft
Counted as living area: Yes

Heated: Yes
Finished: Yes
Enclosed: Yes
Contiguous: Yes
Permitted: Yes
Wet space: Yes
Addition: No
Conversion: No

808 South Van Buren Street, Batavia, Kane County, Illinois,
United States, 60510

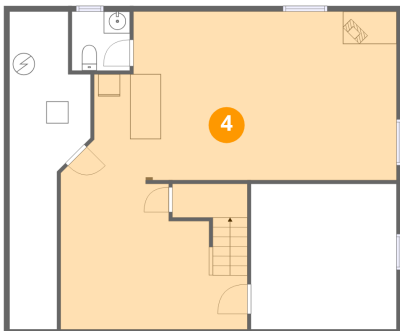
3 Floor 1 - Storage



Dimensions: 13'3" x 13'3"
Area: 175 sq. ft
Counted as living area: No

Heated: No
Finished: No
Enclosed: No
Contiguous: Yes
Permitted: Yes
Wet space: No
Addition: No
Conversion: No

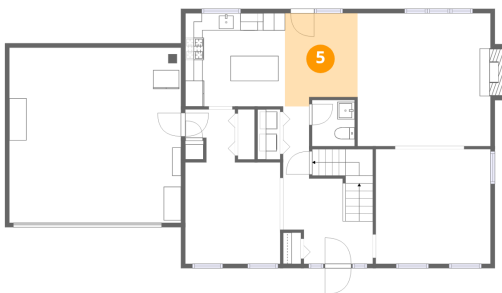
4 Floor 1 - Recreation Room



Dimensions: 30'7" x 28'11"
Area: 632 sq. ft
Counted as living area: Yes

Heated: Yes
Finished: Yes
Enclosed: Yes
Contiguous: Yes
Permitted: Yes
Wet space: No
Addition: No
Conversion: No

5 Floor 2 - Breakfast Nook



Dimensions: 8'5" x 10'9"
Area: 84 sq. ft
Counted as living area: Yes

Heated: Yes
Finished: Yes
Enclosed: Yes
Contiguous: Yes
Permitted: Yes
Wet space: No
Addition: No
Conversion: No

808 South Van Buren Street, Batavia, Kane County, Illinois,
United States, 60510

6 Floor 2 - Family Room



Dimensions: 15'4" x 15'4"
Area: 243 sq. ft
Counted as living area: Yes

Heated: Yes
Finished: Yes
Enclosed: Yes
Contiguous: Yes
Permitted: Yes
Wet space: No
Addition: No
Conversion: No

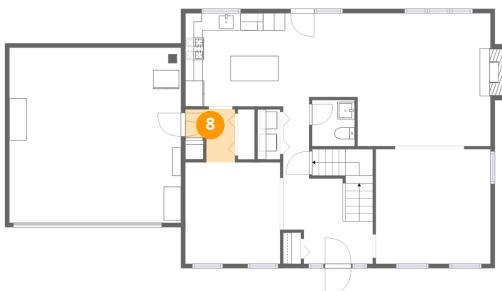
7 Floor 2 - Laundry



Dimensions: 2'7" x 5'9"
Area: 15 sq. ft
Counted as living area: Yes

Heated: Yes
Finished: Yes
Enclosed: Yes
Contiguous: Yes
Permitted: Yes
Wet space: No
Addition: No
Conversion: No

8 Floor 2 - Hall

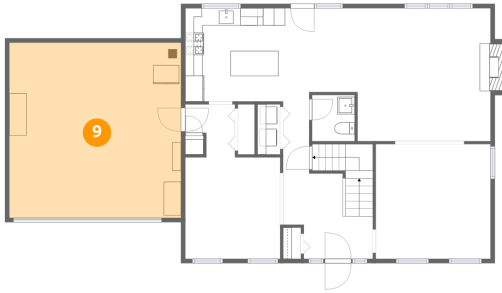


Dimensions: 5'9" x 6'1"
Area: 28 sq. ft
Counted as living area: Yes

Heated: Yes
Finished: Yes
Enclosed: Yes
Contiguous: Yes
Permitted: Yes
Wet space: No
Addition: No
Conversion: No

808 South Van Buren Street, Batavia, Kane County, Illinois,
United States, 60510

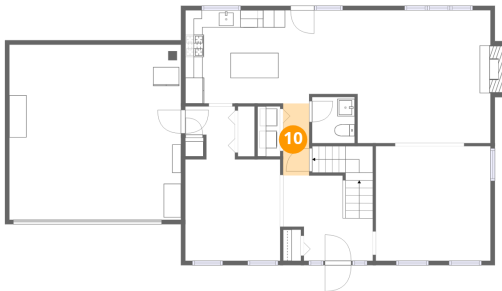
9 Floor 2 - Garage



Dimensions: 19'10" x 20'2"
Area: 400 sq. ft
Counted as living area: No

Heated: No
Finished: No
Enclosed: Yes
Contiguous: Yes
Permitted: Yes
Wet space: No
Addition: No
Conversion: No

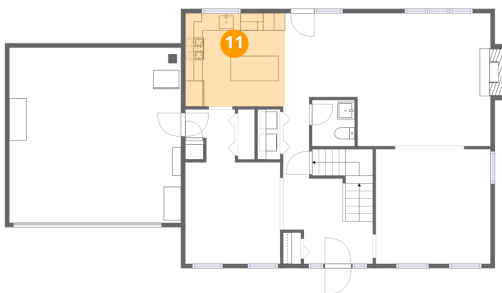
10 Floor 2 - Hall



Dimensions: 3'0" x 8'4"
Area: 25 sq. ft
Counted as living area: Yes

Heated: Yes
Finished: Yes
Enclosed: Yes
Contiguous: Yes
Permitted: Yes
Wet space: No
Addition: No
Conversion: No

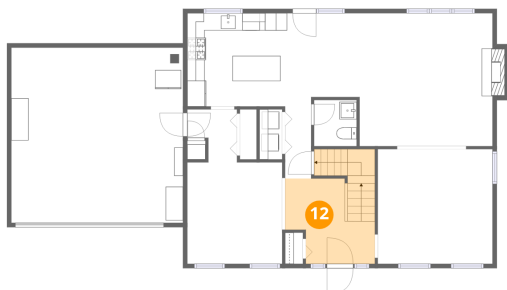
11 Floor 2 - Kitchen



Dimensions: 11'6" x 10'9"
Area: 124 sq. ft
Counted as living area: Yes

Heated: Yes
Finished: Yes
Enclosed: Yes
Contiguous: Yes
Permitted: Yes
Wet space: No
Addition: No
Conversion: No

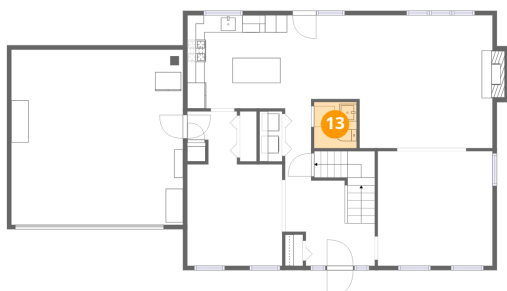
12 Floor 2 - Foyer



Dimensions: 10'4" x 9'10"
Area: 115 sq. ft
Counted as living area: Yes

Heated: Yes
Finished: Yes
Enclosed: Yes
Contiguous: Yes
Permitted: Yes
Wet space: No
Addition: No
Conversion: No

13 Floor 2 - Bath



Dimensions: 4'11" x 5'4"
Area: 26 sq. ft
Counted as living area: Yes

Heated: Yes
Finished: Yes
Enclosed: Yes
Contiguous: Yes
Permitted: Yes
Wet space: Yes
Addition: No
Conversion: No

14 Floor 2 - Living Room

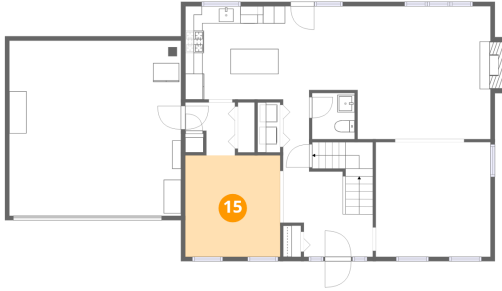


Dimensions: 13'3" x 13'3"
Area: 175 sq. ft
Counted as living area: Yes

Heated: Yes
Finished: Yes
Enclosed: Yes
Contiguous: Yes
Permitted: Yes
Wet space: No
Addition: No
Conversion: No

808 South Van Buren Street, Batavia, Kane County, Illinois,
United States, 60510

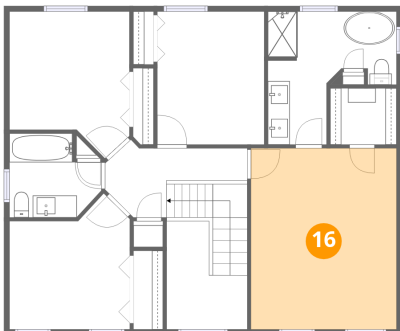
15 Floor 2 - Dining Room



Dimensions: 10'11" x 11'8"
Area: 128 sq. ft
Counted as living area: Yes

Heated: Yes
Finished: Yes
Enclosed: Yes
Contiguous: Yes
Permitted: Yes
Wet space: No
Addition: No
Conversion: No

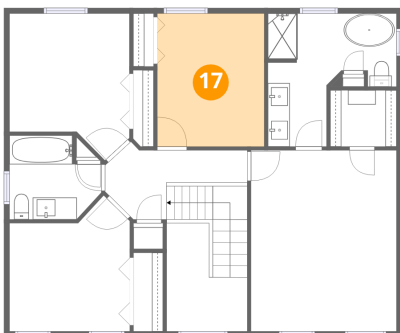
16 Floor 3 - Primary Bedroom



Dimensions: 13'3" x 16'6"
Area: 218 sq. ft
Counted as living area: Yes

Heated: Yes
Finished: Yes
Enclosed: Yes
Contiguous: Yes
Permitted: Yes
Wet space: No
Addition: No
Conversion: No

17 Floor 3 - Bedroom

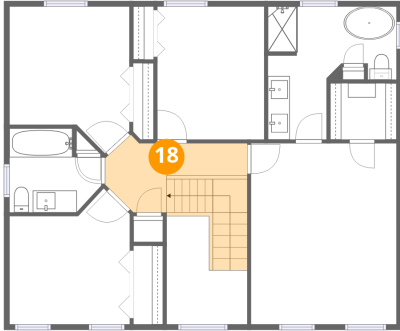


Dimensions: 9'9" x 12'1"
Area: 118 sq. ft
Counted as living area: Yes

Heated: Yes
Finished: Yes
Enclosed: Yes
Contiguous: Yes
Permitted: Yes
Wet space: No
Addition: No
Conversion: No

808 South Van Buren Street, Batavia, Kane County, Illinois,
United States, 60510

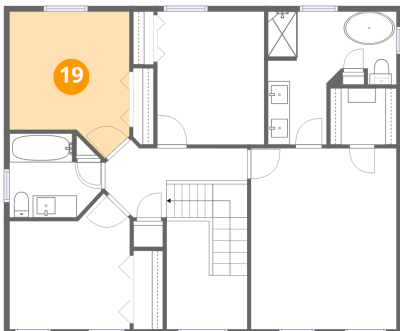
18 Floor 3 - Hall



Dimensions: 12'11" x 6'10"
Area: 97 sq. ft
Counted as living area: Yes

Heated: Yes
Finished: Yes
Enclosed: Yes
Contiguous: Yes
Permitted: Yes
Wet space: No
Addition: No
Conversion: No

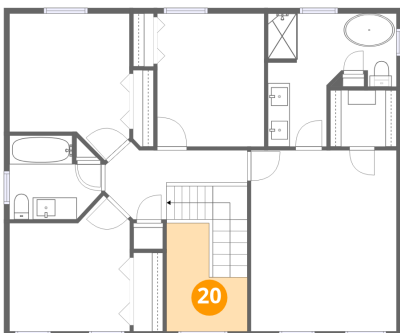
19 Floor 3 - Bedroom



Dimensions: 10'11" x 13'4"
Area: 124 sq. ft
Counted as living area: Yes

Heated: Yes
Finished: Yes
Enclosed: Yes
Contiguous: Yes
Permitted: Yes
Wet space: No
Addition: No
Conversion: No

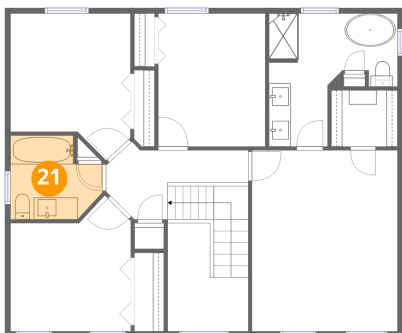
20 Floor 3 - Open To Below



Dimensions: 7'4" x 9'10"
Area: 55 sq. ft
Counted as living area: No

Heated: No
Finished: No
Enclosed: No
Contiguous: Yes
Permitted: No
Wet space: No
Addition: No
Conversion: No

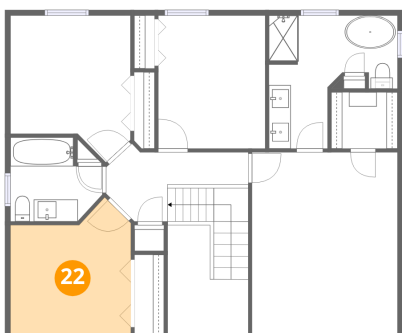
21 Floor 3 - Bath



Dimensions: 8'4" x 7'8"
Area: 54 sq. ft
Counted as living area: Yes

Heated: Yes
Finished: Yes
Enclosed: Yes
Contiguous: Yes
Permitted: Yes
Wet space: Yes
Addition: No
Conversion: No

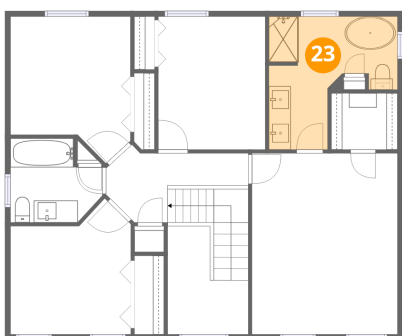
22 Floor 3 - Bedroom



Dimensions: 10'11" x 12'4"
Area: 114 sq. ft
Counted as living area: Yes

Heated: Yes
Finished: Yes
Enclosed: Yes
Contiguous: Yes
Permitted: Yes
Wet space: No
Addition: No
Conversion: No

23 Floor 3 - Primary Bath

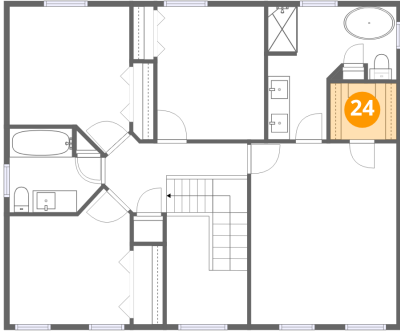


Dimensions: 11'8" x 12'1"
Area: 101 sq. ft
Counted as living area: Yes

Heated: Yes
Finished: Yes
Enclosed: Yes
Contiguous: Yes
Permitted: Yes
Wet space: Yes
Addition: No
Conversion: No

808 South Van Buren Street, Batavia, Kane County, Illinois,
United States, 60510

24 Floor 3 - W.I.C.



Dimensions: 6'0" x 5'1"
Area: 31 sq. ft
Counted as living area: Yes

Heated: Yes
Finished: Yes
Enclosed: Yes
Contiguous: Yes
Permitted: Yes
Wet space: No
Addition: No
Conversion: No