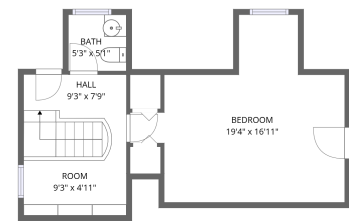
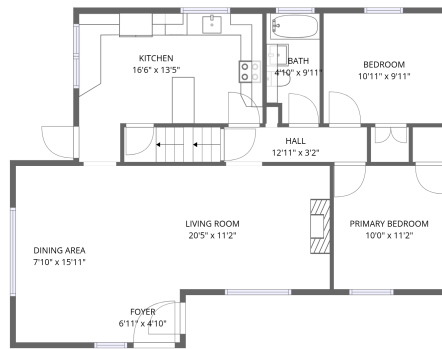
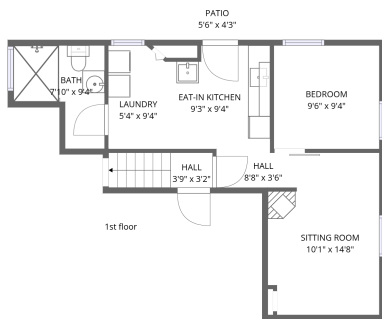
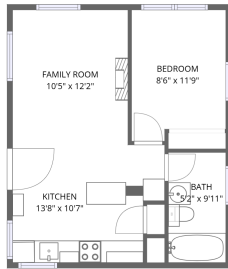


# Home data report

## 141 Terraville Ave, Lead, SD, US



**Total Area: 2239 sq. ft**

1st Floor: 927 sq. ft, 2nd Floor: 956 sq. ft, 3rd Floor: 356 sq. ft

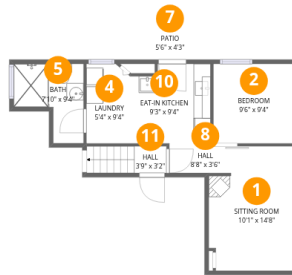
Excluded: Patio 23 sq. ft, Low ceiling 37 sq. ft, Walls: 226 sq. ft

## Property summary



# Home data report

## 141 Terraville Ave,Lead,SD,US



### Room dimensions

Floor 1

Total:927sqft Excluded: 23sqft

#		Dimensions	sqft	Counted as living area
1	Sitting Room	10'1" x 14'8"	147 sq. ft	Yes
2	Bedroom	9'6" x 9'4"	89 sq. ft	Yes
3	Bath	5'2" x 9'11"	51 sq. ft	Yes
4	Laundry	5'4" x 9'4"	50 sq. ft	Yes
5	Bath	7'10" x 9'4"	73 sq. ft	Yes
6	Kitchen	13'8" x 10'7"	146 sq. ft	Yes
7	Patio	5'6" x 4'3"	23 sq. ft	No
8	Hall	8'8" x 3'6"	30 sq. ft	Yes
9	Family Room	10'5" x 12'2"	126 sq. ft	Yes
10	Eat-in Kitchen	9'3" x 9'4"	87 sq. ft	Yes
11	Hall	3'9" x 3'2"	12 sq. ft	Yes

Home data report

**141 Terraville Ave,Lead,SD,US**

#		Dimensions	sqft	Counted as living area
12	Bedroom	8'6" x 11'9"	100 sq. ft	Yes



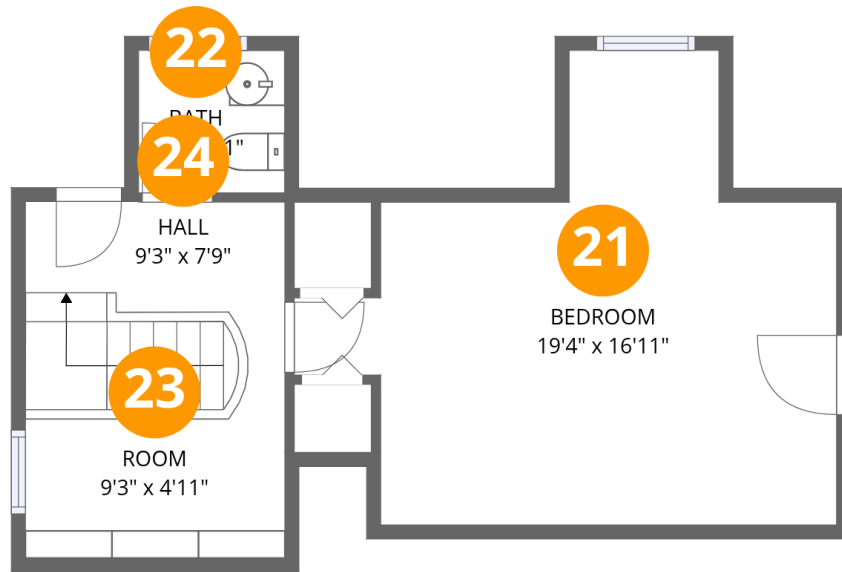
## Room dimensions

Floor 2

Total:956sqft

Excluded: 0sqft

#		Dimensions	sqft	Counted as living area
13	Primary Bedroom	10'0" x 11'2"	112 sq. ft	Yes
14	Hall	12'11" x 3'2"	41 sq. ft	Yes
15	Bath	4'10" x 9'11"	48 sq. ft	Yes
16	Kitchen	16'6" x 13'5"	221 sq. ft	Yes
17	Living Room	20'5" x 11'2"	227 sq. ft	Yes
18	Foyer	6'11" x 4'10"	33 sq. ft	Yes
19	Dining Area	7'10" x 15'11"	125 sq. ft	Yes
20	Bedroom	10'11" x 9'11"	109 sq. ft	Yes



## Room dimensions

Floor 3

Total:356sqft Excluded: 37sqft

#		Dimensions	sqft	Counted as living area
21	Bedroom	19'4" x 16'11"	327 sq. ft	Yes
22	Bath	5'3" x 5'1"	26 sq. ft	Yes
23	Room	9'3" x 4'11"	46 sq. ft	Yes
24	Hall	9'3" x 7'9"	72 sq. ft	Yes

## 1 Floor 1 - Sitting Room

---



Dimensions: 10'1" x 14'8"  
Area: 147 sq. ft  
Counted as living area: Yes

Heated: Yes  
Finished: Yes  
Enclosed: Yes  
Contiguous: Yes  
Permitted: Yes  
Wet space: No  
Addition: No  
Conversion: No



## 2 Floor 1 - Bedroom

---



Dimensions: 9'6" x 9'4"  
Area: 89 sq. ft  
Counted as living area: Yes

Heated: Yes  
Finished: Yes  
Enclosed: Yes  
Contiguous: Yes  
Permitted: Yes  
Wet space: No  
Addition: No  
Conversion: No



### 3 Floor 1 - Bath



Dimensions: 5'2" x 9'11"  
Area: 51 sq. ft  
Counted as living area: Yes

Heated: Yes  
Finished: Yes  
Enclosed: Yes  
Contiguous: Yes  
Permitted: Yes  
Wet space: Yes  
Addition: No  
Conversion: No



### 4 Floor 1 - Laundry



Dimensions: 5'4" x 9'4"  
Area: 50 sq. ft  
Counted as living area: Yes

Heated: Yes  
Finished: Yes  
Enclosed: Yes  
Contiguous: Yes  
Permitted: Yes  
Wet space: No  
Addition: No  
Conversion: No



### 5 Floor 1 - Bath



Dimensions: 7'10" x 9'4"  
Area: 73 sq. ft  
Counted as living area: Yes

Heated: Yes  
Finished: Yes  
Enclosed: Yes  
Contiguous: Yes  
Permitted: Yes  
Wet space: Yes  
Addition: No  
Conversion: No



## 6 Floor 1 - Kitchen



Dimensions: 13'8" x 10'7"  
Area: 146 sq. ft  
Counted as living area: Yes

Heated: Yes  
Finished: Yes  
Enclosed: Yes  
Contiguous: Yes  
Permitted: Yes  
Wet space: No  
Addition: No  
Conversion: No

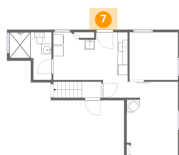


## 7 Floor 1 - Patio



Dimensions: 5'6" x 4'3"  
Area: 23 sq. ft  
Counted as living area: No

Heated: No  
Finished: No  
Enclosed: No  
Contiguous: Yes  
Permitted: Yes  
Wet space: No  
Addition: No  
Conversion: No



## 8 Floor 1 - Hall



Dimensions: 8'8" x 3'6"  
Area: 30 sq. ft  
Counted as living area: Yes

Heated: Yes  
Finished: Yes  
Enclosed: Yes  
Contiguous: Yes  
Permitted: Yes  
Wet space: No  
Addition: No  
Conversion: No



### 9 Floor 1 - Family Room

---



Dimensions: 10'5" x 12'2"  
Area: 126 sq. ft  
Counted as living area: Yes

Heated: Yes  
Finished: Yes  
Enclosed: Yes  
Contiguous: Yes  
Permitted: Yes  
Wet space: No  
Addition: No  
Conversion: No



### 10 Floor 1 - Eat-in Kitchen

---



Dimensions: 9'3" x 9'4"  
Area: 87 sq. ft  
Counted as living area: Yes

Heated: Yes  
Finished: Yes  
Enclosed: Yes  
Contiguous: Yes  
Permitted: Yes  
Wet space: No  
Addition: No  
Conversion: No



### 11 Floor 1 - Hall

---



Dimensions: 3'9" x 3'2"  
Area: 12 sq. ft  
Counted as living area: Yes

Heated: Yes  
Finished: Yes  
Enclosed: Yes  
Contiguous: Yes  
Permitted: Yes  
Wet space: No  
Addition: No  
Conversion: No



### 12 Floor 1 - Bedroom



Dimensions: 8'6" x 11'9"  
Area: 100 sq. ft  
Counted as living area: Yes

Heated: Yes  
Finished: Yes  
Enclosed: Yes  
Contiguous: Yes  
Permitted: Yes  
Wet space: No  
Addition: No  
Conversion: No



### 13 Floor 2 - Primary Bedroom



Dimensions: 10'0" x 11'2"  
Area: 112 sq. ft  
Counted as living area: Yes

Heated: Yes  
Finished: Yes  
Enclosed: Yes  
Contiguous: Yes  
Permitted: Yes  
Wet space: No  
Addition: No  
Conversion: No

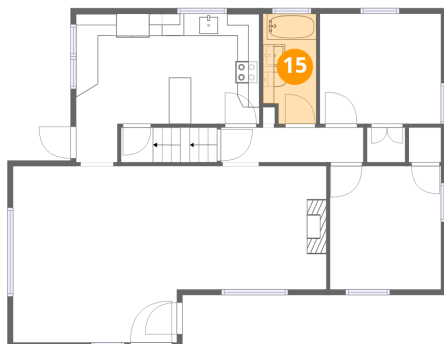
### 14 Floor 2 - Hall



Dimensions: 12'11" x 3'2"  
Area: 41 sq. ft  
Counted as living area: Yes

Heated: Yes  
Finished: Yes  
Enclosed: Yes  
Contiguous: Yes  
Permitted: Yes  
Wet space: No  
Addition: No  
Conversion: No

**15** Floor 2 - Bath



Dimensions: 4'10" x 9'11"  
Area: 48 sq. ft  
Counted as living area: Yes

Heated: Yes  
Finished: Yes  
Enclosed: Yes  
Contiguous: Yes  
Permitted: Yes  
Wet space: Yes  
Addition: No  
Conversion: No

**16** Floor 2 - Kitchen



Dimensions: 16'6" x 13'5"  
Area: 221 sq. ft  
Counted as living area: Yes

Heated: Yes  
Finished: Yes  
Enclosed: Yes  
Contiguous: Yes  
Permitted: Yes  
Wet space: No  
Addition: No  
Conversion: No

**17** Floor 2 - Living Room



Dimensions: 20'5" x 11'2"  
Area: 227 sq. ft  
Counted as living area: Yes

Heated: Yes  
Finished: Yes  
Enclosed: Yes  
Contiguous: Yes  
Permitted: Yes  
Wet space: No  
Addition: No  
Conversion: No

### 18 Floor 2 - Foyer



Dimensions: 6'11" x 4'10"  
Area: 33 sq. ft  
Counted as living area: Yes

Heated: Yes  
Finished: Yes  
Enclosed: Yes  
Contiguous: Yes  
Permitted: Yes  
Wet space: No  
Addition: No  
Conversion: No

### 19 Floor 2 - Dining Area



Dimensions: 7'10" x 15'11"  
Area: 125 sq. ft  
Counted as living area: Yes

Heated: Yes  
Finished: Yes  
Enclosed: Yes  
Contiguous: Yes  
Permitted: Yes  
Wet space: No  
Addition: No  
Conversion: No

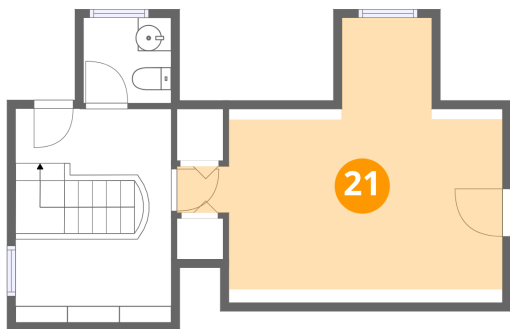
### 20 Floor 2 - Bedroom



Dimensions: 10'11" x 9'11"  
Area: 109 sq. ft  
Counted as living area: Yes

Heated: Yes  
Finished: Yes  
Enclosed: Yes  
Contiguous: Yes  
Permitted: Yes  
Wet space: No  
Addition: No  
Conversion: No

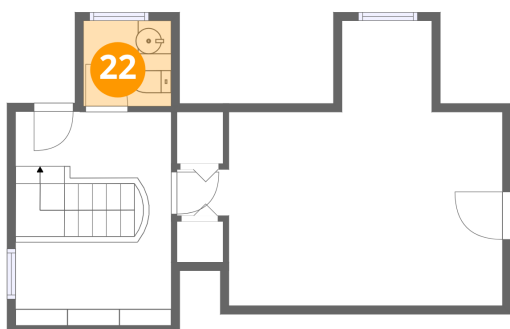
### 21 Floor 3 - Bedroom



Dimensions: 19'4" x 16'11"  
Area: 327 sq. ft  
Counted as living area: Yes

Heated: Yes  
Finished: Yes  
Enclosed: Yes  
Contiguous: Yes  
Permitted: Yes  
Wet space: No  
Addition: No  
Conversion: No

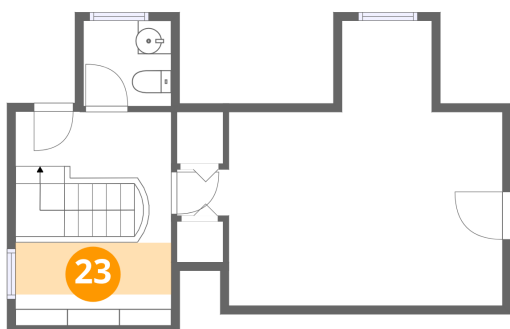
### 22 Floor 3 - Bath



Dimensions: 5'3" x 5'11"  
Area: 26 sq. ft  
Counted as living area: Yes

Heated: Yes  
Finished: Yes  
Enclosed: Yes  
Contiguous: Yes  
Permitted: Yes  
Wet space: Yes  
Addition: No  
Conversion: No

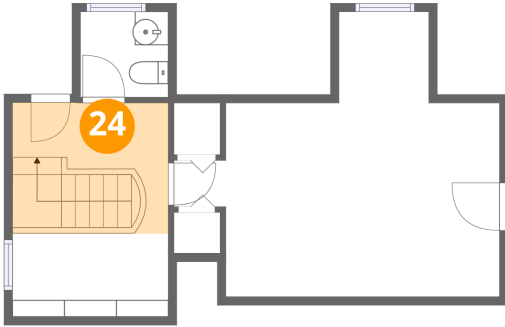
### 23 Floor 3 - Room



Dimensions: 9'3" x 4'11"  
Area: 46 sq. ft  
Counted as living area: Yes

Heated: Yes  
Finished: Yes  
Enclosed: Yes  
Contiguous: Yes  
Permitted: Yes  
Wet space: No  
Addition: No  
Conversion: No

**24** Floor 3 - Hall



Dimensions: 9'3" x 7'9"  
Area: 72 sq. ft  
Counted as living area: Yes

Heated: Yes  
Finished: Yes  
Enclosed: Yes  
Contiguous: Yes  
Permitted: Yes  
Wet space: No  
Addition: No  
Conversion: No