

Home report

554 Braeburn Drive, Martinsburg, Berkeley County, West Virginia, United States, 25403



Total Area: 1769 sq. ft
Below Ground: 54 sq. ft, Floor 2: 860 sq. ft, Floor 3: 855 sq. ft
Excluded: Basement 827 sq. ft, Garage 432 sq. ft, Screened porch 111 sq. ft, Open to below 383 sq. ft, Walls: 266 sq. ft

Property summary

 **3** Floors

 **3** Bedrooms

 **2** Bathrooms

Home report

554 Braeburn Drive, Martinsburg, Berkeley County, West Virginia, United States, 25403

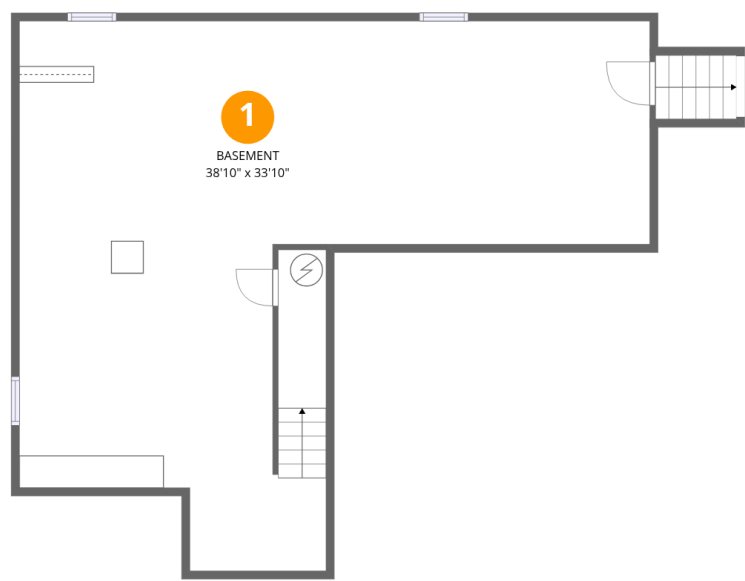


1
Half baths



1
Garages

554 Braeburn Drive, Martinsburg, Berkeley County, West Virginia, United States, 25403



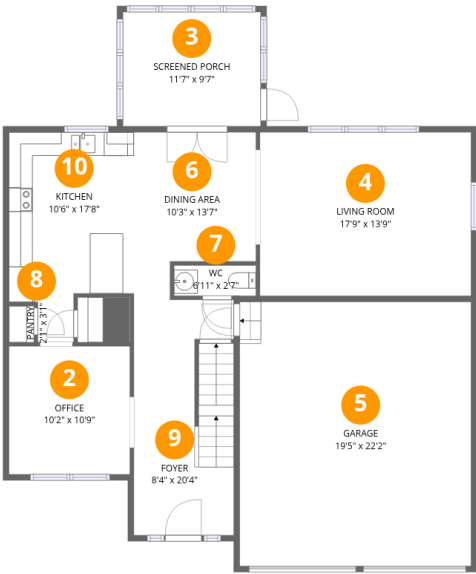
Room dimensions

Floor 1 Below ground Total:54sqft Excluded: 827sqft

#		Max Dimensions	sqft	Included
1	Basement	38'10" x 33'10"	826 sq. ft	No

Home report

554 Braeburn Drive, Martinsburg, Berkeley County, West Virginia, United States, 25403



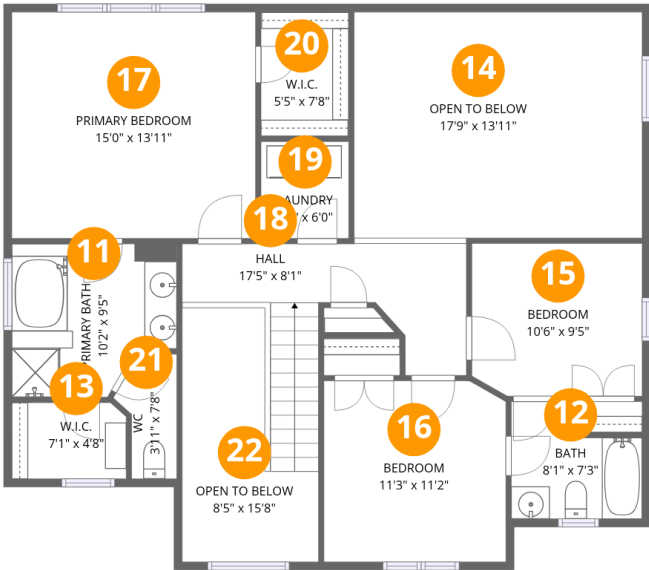
Room dimensions

Floor 2 Total:860sqft Excluded: 543sqft

#		Max Dimensions	sqft	Included
2	Office	10'2" x 10'9"	109 sq. ft	Yes
3	Screened Porch	11'7" x 9'7"	111 sq. ft	No
4	Living Room	17'9" x 13'9"	244 sq. ft	Yes
5	Garage	19'5" x 22'2"	432 sq. ft	No
6	Dining Area	10'3" x 13'7"	120 sq. ft	Yes
7	WC	6'11" x 2'7"	18 sq. ft	Yes
8	Pantry	2'1" x 3'1"	6 sq. ft	Yes
9	Foyer	8'4" x 20'4"	164 sq. ft	Yes
10	Kitchen	10'6" x 17'8"	156 sq. ft	Yes

Home report

554 Braeburn Drive, Martinsburg, Berkeley County, West Virginia, United States, 25403



Room dimensions

Floor 3 Total:855sqft Excluded: 383sqft

#		Max Dimensions	sqft	Included
11	Primary Bath	10'2" x 9'5"	86 sq. ft	Yes
12	Bath	8'1" x 7'3"	47 sq. ft	Yes
13	W.I.C.	7'1" x 4'8"	33 sq. ft	Yes
14	Open To Below	17'9" x 13'11"	249 sq. ft	No
15	Bedroom	10'6" x 9'5"	97 sq. ft	Yes
16	Bedroom	11'3" x 11'2"	124 sq. ft	Yes
17	Primary Bedroom	15'0" x 13'11"	209 sq. ft	Yes
18	Hall	17'5" x 8'1"	82 sq. ft	Yes
19	Laundry	5'5" x 6'0"	32 sq. ft	Yes
20	W.I.C.	5'5" x 7'8"	41 sq. ft	Yes
21	WC	3'11" x 7'8"	23 sq. ft	Yes

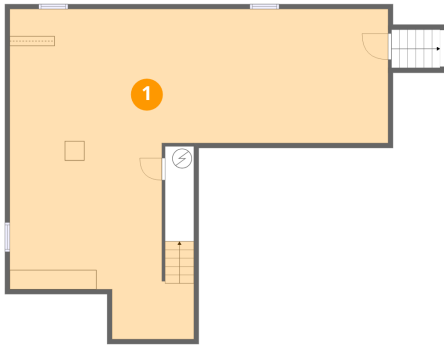
Home report

554 Braeburn Drive, Martinsburg, Berkeley County, West Virginia, United States, 25403

#		Max Dimensions	sqft	Included
22	Open To Below	8'5" x 15'8"	135 sq. ft	No

554 Braeburn Drive, Martinsburg, Berkeley County, West Virginia, United States, 25403

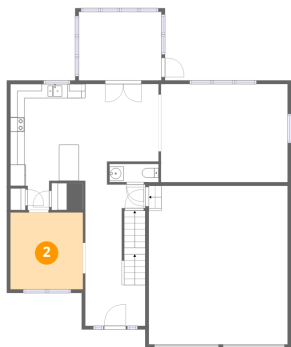
1 Floor 1 - Basement



Max Dimensions: 38'10" x 33'10"
Calculated Area: 826 sq. ft
Included: No

Heated: Yes
Finished: No
Enclosed: Yes
Contiguous: Yes
Permitted: Yes
Wet space: No
Addition: No
Conversion: No

2 Floor 2 - Office

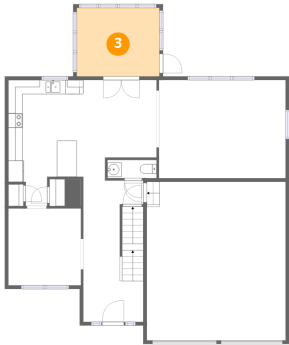


Max Dimensions: 10'2" x 10'9"
Calculated Area: 109 sq. ft
Included: Yes

Heated: Yes
Finished: Yes
Enclosed: Yes
Contiguous: Yes
Permitted: Yes
Wet space: No
Addition: No
Conversion: No

554 Braeburn Drive, Martinsburg, Berkeley County, West Virginia, United States, 25403

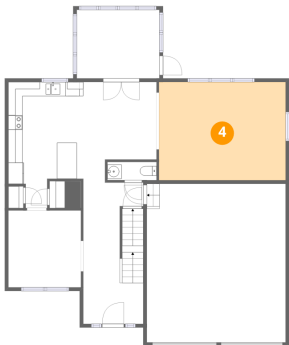
3 Floor 2 - Screened Porch



Max Dimensions: 11'7" x 9'7"
Calculated Area: 111 sq. ft
Included: No

Heated: No
Finished: No
Enclosed: No
Contiguous: Yes
Permitted: Yes
Wet space: No
Addition: No
Conversion: No

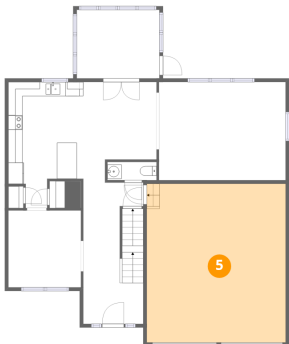
4 Floor 2 - Living Room



Max Dimensions: 17'9" x 13'9"
Calculated Area: 244 sq. ft
Included: Yes

Heated: Yes
Finished: Yes
Enclosed: Yes
Contiguous: Yes
Permitted: Yes
Wet space: No
Addition: No
Conversion: No

5 Floor 2 - Garage



Max Dimensions: 19'5" x 22'2"
Calculated Area: 432 sq. ft
Included: No

Heated: No
Finished: No
Enclosed: Yes
Contiguous: Yes
Permitted: Yes
Wet space: No
Addition: No
Conversion: No

554 Braeburn Drive, Martinsburg, Berkeley County, West Virginia, United States, 25403

6 Floor 2 - Dining Area



Max Dimensions: 10'3" x 13'7"
Calculated Area: 120 sq. ft
Included: Yes

Heated: Yes
Finished: Yes
Enclosed: Yes
Contiguous: Yes
Permitted: Yes
Wet space: No
Addition: No
Conversion: No

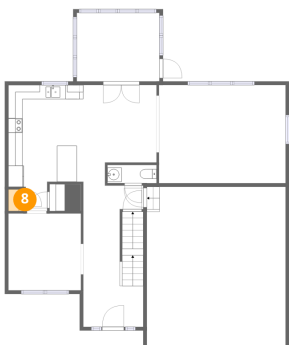
7 Floor 2 - WC



Max Dimensions: 6'11" x 2'7"
Calculated Area: 18 sq. ft
Included: Yes

Heated: Yes
Finished: Yes
Enclosed: Yes
Contiguous: Yes
Permitted: Yes
Wet space: Yes
Addition: No
Conversion: No

8 Floor 2 - Pantry

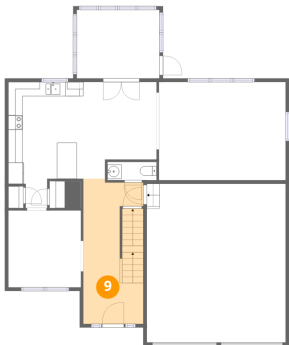


Max Dimensions: 2'1" x 3'1"
Calculated Area: 6 sq. ft
Included: Yes

Heated: Yes
Finished: Yes
Enclosed: Yes
Contiguous: Yes
Permitted: Yes
Wet space: No
Addition: No
Conversion: No

554 Braeburn Drive, Martinsburg, Berkeley County, West Virginia, United States, 25403

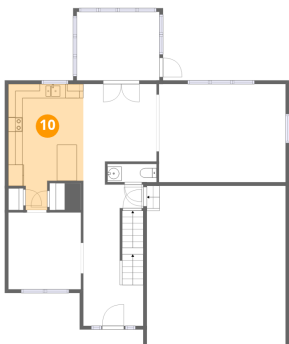
9 Floor 2 - Foyer



Max Dimensions: 8'4" x 20'4"
Calculated Area: 164 sq. ft
Included: Yes

Heated: Yes
Finished: Yes
Enclosed: Yes
Contiguous: Yes
Permitted: Yes
Wet space: No
Addition: No
Conversion: No

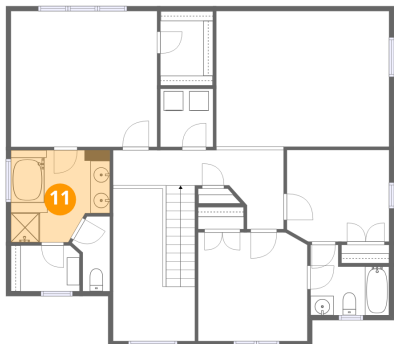
10 Floor 2 - Kitchen



Max Dimensions: 10'6" x 17'8"
Calculated Area: 156 sq. ft
Included: Yes

Heated: Yes
Finished: Yes
Enclosed: Yes
Contiguous: Yes
Permitted: Yes
Wet space: No
Addition: No
Conversion: No

11 Floor 3 - Primary Bath

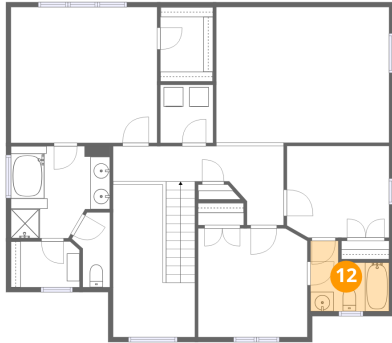


Max Dimensions: 10'2" x 9'5"
Calculated Area: 86 sq. ft
Included: Yes

Heated: Yes
Finished: Yes
Enclosed: Yes
Contiguous: Yes
Permitted: Yes
Wet space: Yes
Addition: No
Conversion: No

554 Braeburn Drive, Martinsburg, Berkeley County, West Virginia, United States, 25403

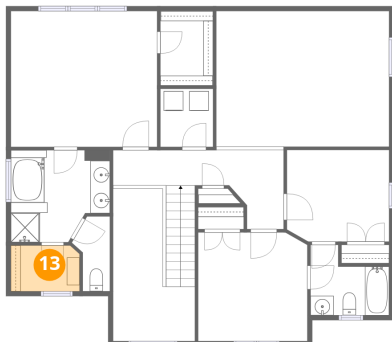
12 Floor 3 - Bath



Max Dimensions: 8'1" x 7'3"
Calculated Area: 47 sq. ft
Included: Yes

Heated: Yes
Finished: Yes
Enclosed: Yes
Contiguous: Yes
Permitted: Yes
Wet space: Yes
Addition: No
Conversion: No

13 Floor 3 - W.I.C.



Max Dimensions: 7'1" x 4'8"
Calculated Area: 33 sq. ft
Included: Yes

Heated: Yes
Finished: Yes
Enclosed: Yes
Contiguous: Yes
Permitted: Yes
Wet space: No
Addition: No
Conversion: No

14 Floor 3 - Open To Below



Max Dimensions: 17'9" x 13'11"
Calculated Area: 249 sq. ft
Included: No

Heated: No
Finished: No
Enclosed: No
Contiguous: Yes
Permitted: No
Wet space: No
Addition: No
Conversion: No

554 Braeburn Drive, Martinsburg, Berkeley County, West Virginia, United States, 25403

15 Floor 3 - Bedroom



Max Dimensions: 10'6" x 9'5"
Calculated Area: 97 sq. ft
Included: Yes

Heated: Yes
Finished: Yes
Enclosed: Yes
Contiguous: Yes
Permitted: Yes
Wet space: No
Addition: No
Conversion: No

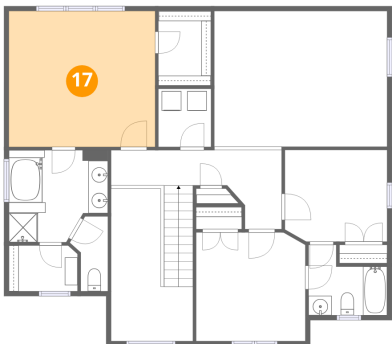
16 Floor 3 - Bedroom



Max Dimensions: 11'3" x 11'2"
Calculated Area: 124 sq. ft
Included: Yes

Heated: Yes
Finished: Yes
Enclosed: Yes
Contiguous: Yes
Permitted: Yes
Wet space: No
Addition: No
Conversion: No

17 Floor 3 - Primary Bedroom

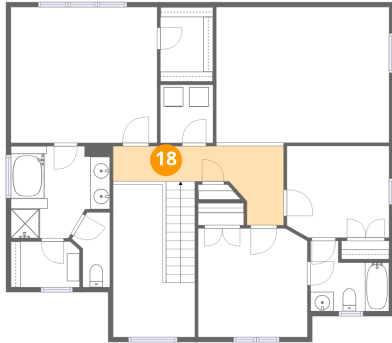


Max Dimensions: 15'0" x 13'11"
Calculated Area: 209 sq. ft
Included: Yes

Heated: Yes
Finished: Yes
Enclosed: Yes
Contiguous: Yes
Permitted: Yes
Wet space: No
Addition: No
Conversion: No

554 Braeburn Drive, Martinsburg, Berkeley County, West Virginia, United States, 25403

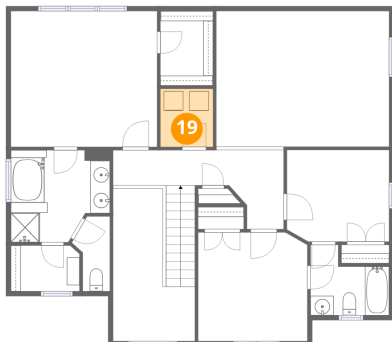
18 Floor 3 - Hall



Max Dimensions: 17'5" x 8'1"
Calculated Area: 82 sq. ft
Included: Yes

Heated: Yes
Finished: Yes
Enclosed: Yes
Contiguous: Yes
Permitted: Yes
Wet space: No
Addition: No
Conversion: No

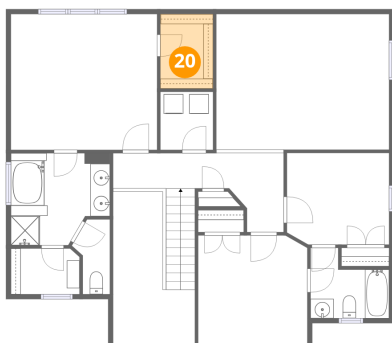
19 Floor 3 - Laundry



Max Dimensions: 5'5" x 6'0"
Calculated Area: 32 sq. ft
Included: Yes

Heated: Yes
Finished: Yes
Enclosed: Yes
Contiguous: Yes
Permitted: Yes
Wet space: No
Addition: No
Conversion: No

20 Floor 3 - W.I.C.

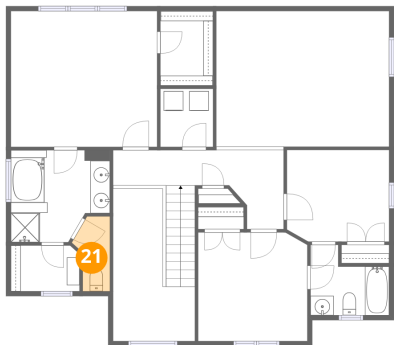


Max Dimensions: 5'5" x 7'8"
Calculated Area: 41 sq. ft
Included: Yes

Heated: Yes
Finished: Yes
Enclosed: Yes
Contiguous: Yes
Permitted: Yes
Wet space: No
Addition: No
Conversion: No

554 Braeburn Drive, Martinsburg, Berkeley County, West Virginia, United States, 25403

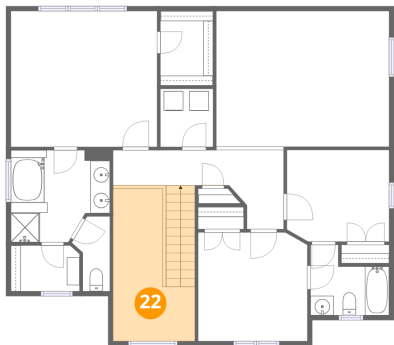
21 Floor 3 - WC



Max Dimensions: 3'11" x 7'8"
Calculated Area: 23 sq. ft
Included: Yes

Heated: Yes
Finished: Yes
Enclosed: Yes
Contiguous: Yes
Permitted: Yes
Wet space: Yes
Addition: No
Conversion: No

22 Floor 3 - Open To Below



Max Dimensions: 8'5" x 15'8"
Calculated Area: 135 sq. ft
Included: No

Heated: No
Finished: No
Enclosed: No
Contiguous: Yes
Permitted: No
Wet space: No
Addition: No
Conversion: No