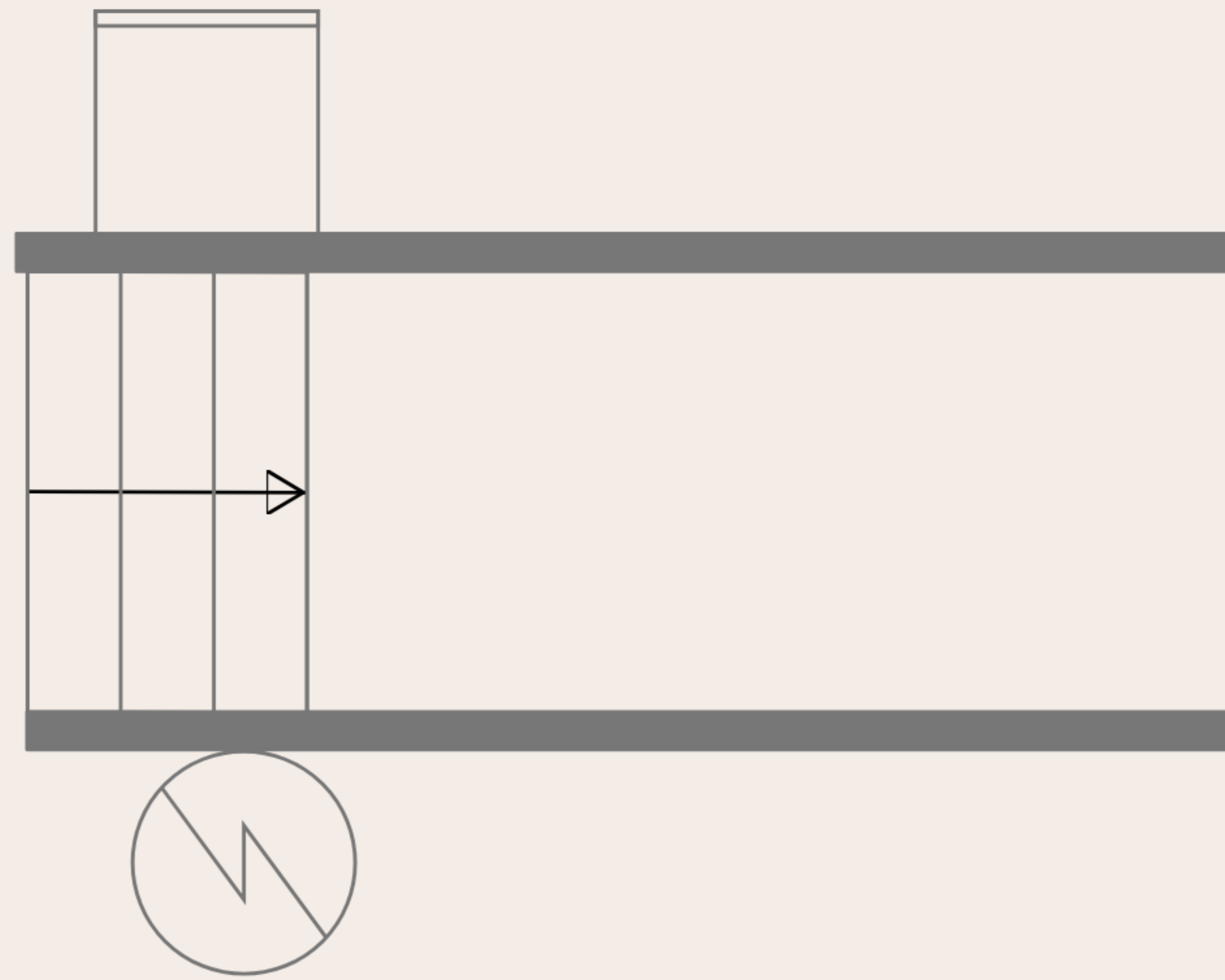


Basement
34'5" x 25'4"



TOTAL: 1513 sq. ft
Basement: 0 sq. ft, 1st floor: 828 sq. ft, 2nd floor: 685 sq. ft
EXCLUDED AREAS: BASEMENT: 782 sq. ft, GARAGE: 448 sq. ft, PORCH: 90 sq. ft,
COVERED PATIO: 385 sq. ft, WALLS: 216 sq. ft



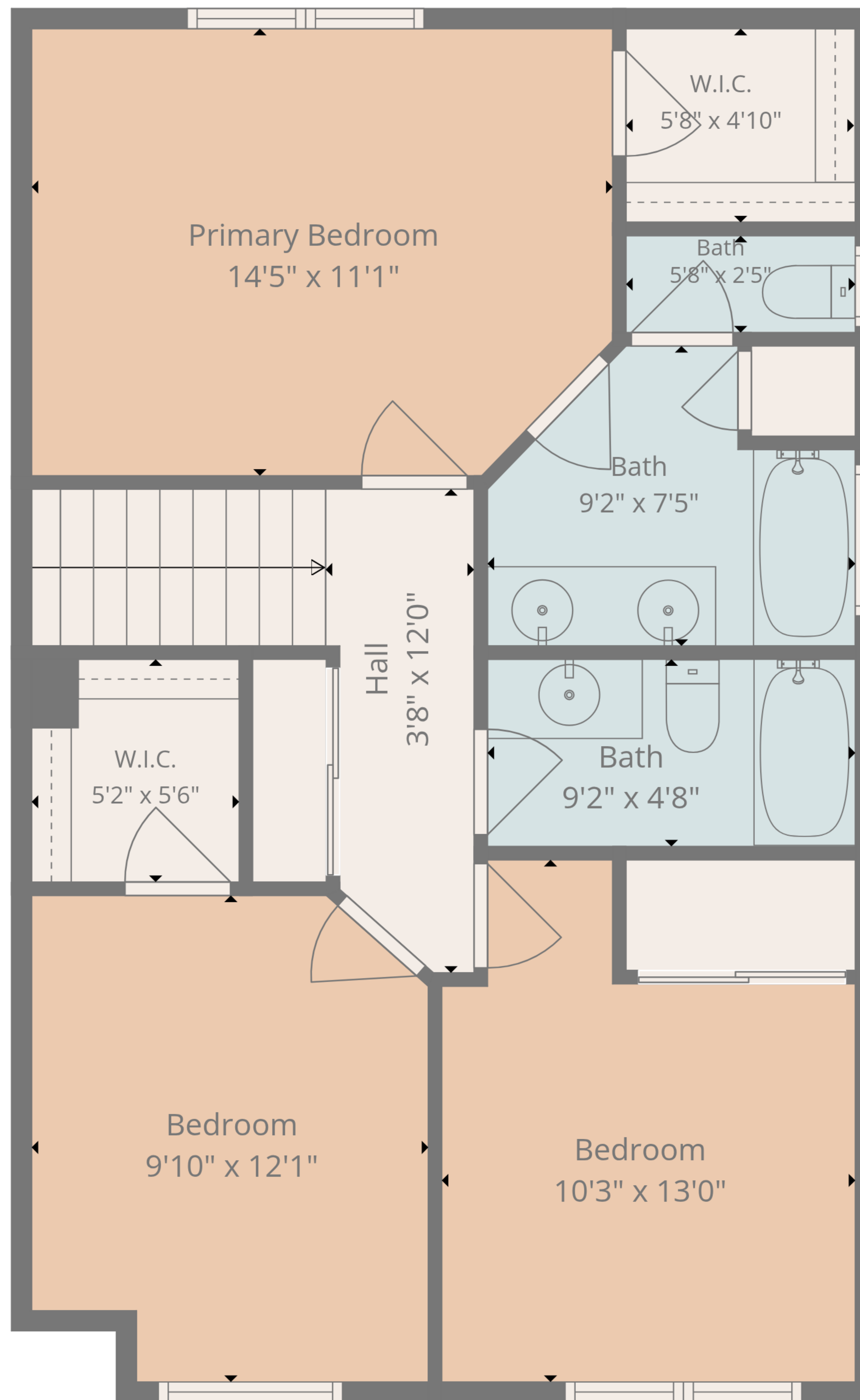


TOTAL: 1513 sq. ft

Basement: 0 sq. ft, 1st floor: 828 sq. ft, 2nd floor: 685 sq. ft

EXCLUDED AREAS: BASEMENT: 782 sq. ft, GARAGE: 448 sq. ft, PORCH: 90 sq. ft,
COVERED PATIO: 385 sq. ft, WALLS: 216 sq. ft

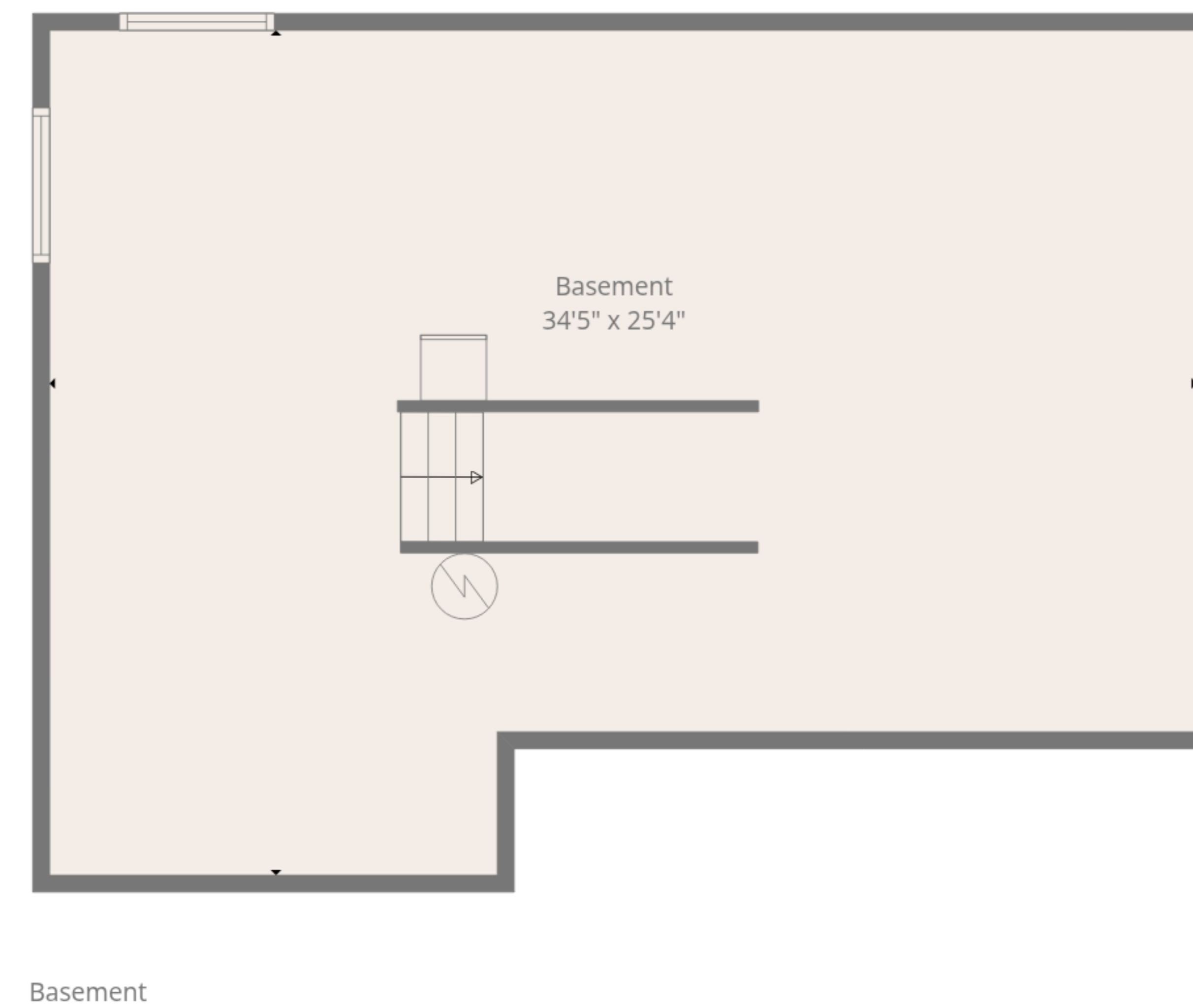
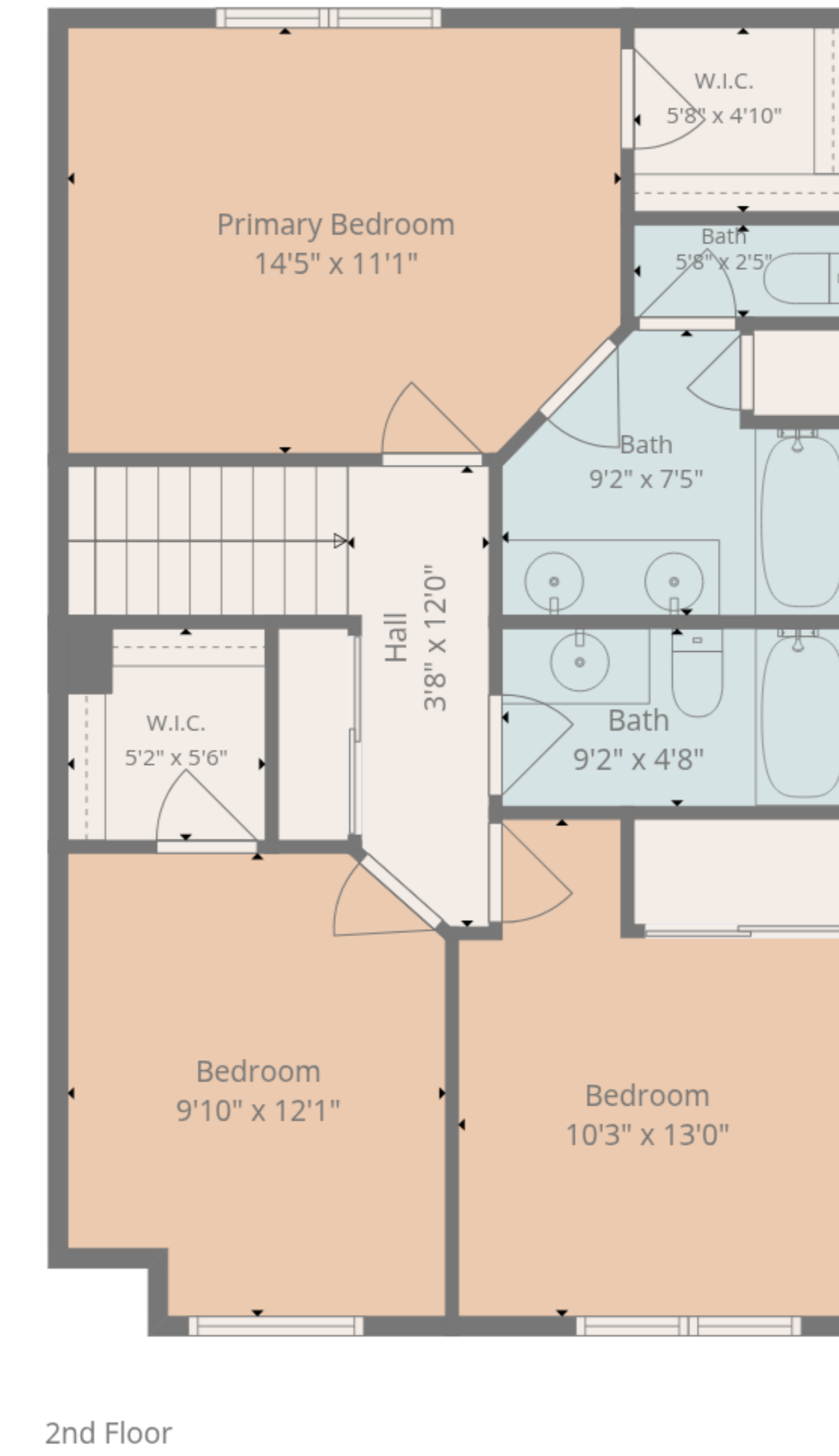




TOTAL: 1513 sq. ft

Basement: 0 sq. ft, 1st floor: 828 sq. ft, 2nd floor: 685 sq. ft
 EXCLUDED AREAS: BASEMENT: 782 sq. ft, GARAGE: 448 sq. ft, PORCH: 90 sq. ft,
 COVERED PATIO: 385 sq. ft, WALLS: 216 sq. ft





TOTAL: 1513 sq. ft
 Basement: 0 sq. ft, 1st floor: 828 sq. ft, 2nd floor: 685 sq. ft
 EXCLUDED AREAS: BASEMENT: 782 sq. ft, GARAGE: 448 sq. ft, PORCH: 90 sq. ft,
 COVERED PATIO: 385 sq. ft, WALLS: 216 sq. ft

