

Home data report

984 S Crossed Arrows Cir, Garden City, UT, US



Total Area: 3966 sq. ft

Basement: 1948 sq. ft, 1st Floor: 2018 sq. ft

Excluded: Garage 627 sq. ft, Walls: 264 sq. ft

Property summary



2 Floors



7 Bedrooms

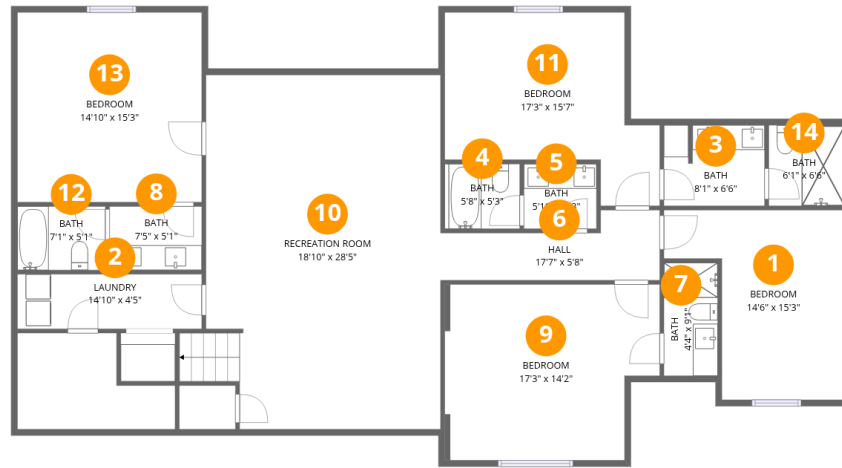


7 Bathrooms



1 Garages

984 S Crossed Arrows Cir, Garden City, UT, US



Room dimensions

Floor 1 Below grade

Total: 1948 sqft Excluded: 0 sqft

#		Dimensions	sqft	Counted as living area
1	Bedroom	14'6" x 15'3"	169 sq. ft	Yes
2	Laundry	14'10" x 4'5"	65 sq. ft	Yes
3	Bath	8'1" x 6'6"	52 sq. ft	Yes
4	Bath	5'8" x 5'3"	31 sq. ft	Yes
5	Bath	5'10" x 5'3"	30 sq. ft	Yes
6	Hall	17'7" x 5'8"	76 sq. ft	Yes
7	Bath	4'4" x 9'1"	39 sq. ft	Yes
8	Bath	7'5" x 5'1"	38 sq. ft	Yes
9	Bedroom	17'3" x 14'2"	225 sq. ft	Yes
10	Recreation Room	18'10" x 28'5"	534 sq. ft	Yes
11	Bedroom	17'3" x 15'7"	197 sq. ft	Yes

Home data report

984 S Crossed Arrows Cir,Garden City,UT,US

#		Dimensions	sqft	Counted as living area
12	Bath	7'1" x 5'1"	36 sq. ft	Yes
13	Bedroom	14'10" x 15'3"	226 sq. ft	Yes
14	Bath	6'1" x 6'6"	40 sq. ft	Yes



Room dimensions

Floor 2

Total: 2018 sqft Excluded: 627 sqft

#		Dimensions	sqft	Counted as living area
15	Primary Bedroom	17'4" x 16'5"	201 sq. ft	Yes
16	Hall	14'10" x 10'2"	80 sq. ft	Yes
17	Bath	5'1" x 4'10"	25 sq. ft	Yes
18	Dining Area	14'10" x 9'1"	134 sq. ft	Yes
19	Laundry	8'2" x 6'10"	56 sq. ft	Yes
20	Living Room	19'2" x 28'6"	600 sq. ft	Yes
21	Bedroom	14'5" x 14'4"	192 sq. ft	Yes
22	Bath	6'5" x 9'1"	59 sq. ft	Yes
23	Bedroom	14'6" x 10'9"	156 sq. ft	Yes
24	Bath	5'1" x 4'10"	25 sq. ft	Yes
25	Pantry	4'11" x 4'6"	22 sq. ft	Yes

Home data report

984 S Crossed Arrows Cir,Garden City,UT,US

#		Dimensions	sqft	Counted as living area
26	Hall	8'2" x 5'6"	45 sq. ft	Yes
27	Garage	29'9" x 22'2"	627 sq. ft	No
28	Bath	6'7" x 5'3"	35 sq. ft	Yes
29	Bath	10'5" x 5'3"	45 sq. ft	Yes
30	Kitchen	14'10" x 14'9"	211 sq. ft	Yes

1 Floor 1 - Bedroom



Dimensions: 14'6" x 15'3"
Area: 169 sq. ft
Counted as living area: Yes

Heated: Yes
Finished: Yes
Enclosed: Yes
Contiguous: Yes
Permitted: Yes
Wet space: No
Addition: No
Conversion: No

2 Floor 1 - Laundry



Dimensions: 14'10" x 4'5"
Area: 65 sq. ft
Counted as living area: Yes

Heated: Yes
Finished: Yes
Enclosed: Yes
Contiguous: Yes
Permitted: Yes
Wet space: No
Addition: No
Conversion: No

3 Floor 1 - Bath



Dimensions: 8'1" x 6'6"
Area: 52 sq. ft
Counted as living area: Yes

Heated: Yes
Finished: Yes
Enclosed: Yes
Contiguous: Yes
Permitted: Yes
Wet space: Yes
Addition: No
Conversion: No

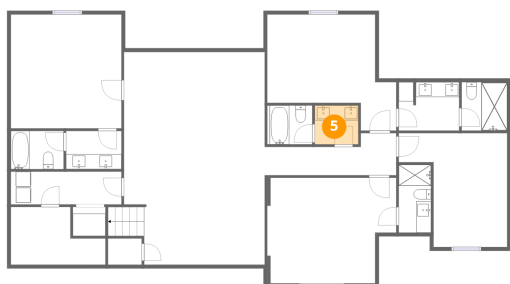
4 Floor 1 - Bath



Dimensions: 5'8" x 5'3"
Area: 31 sq. ft
Counted as living area: Yes

Heated: Yes
Finished: Yes
Enclosed: Yes
Contiguous: Yes
Permitted: Yes
Wet space: Yes
Addition: No
Conversion: No

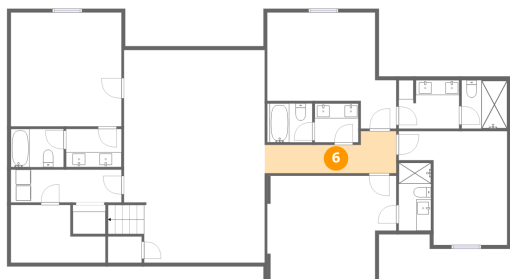
5 Floor 1 - Bath



Dimensions: 5'10" x 5'3"
Area: 30 sq. ft
Counted as living area: Yes

Heated: Yes
Finished: Yes
Enclosed: Yes
Contiguous: Yes
Permitted: Yes
Wet space: Yes
Addition: No
Conversion: No

6 Floor 1 - Hall



Dimensions: 17'7" x 5'8"
Area: 76 sq. ft
Counted as living area: Yes

Heated: Yes
Finished: Yes
Enclosed: Yes
Contiguous: Yes
Permitted: Yes
Wet space: No
Addition: No
Conversion: No

7 Floor 1 - Bath



Dimensions: 4'4" x 9'1"
Area: 39 sq. ft
Counted as living area: Yes

Heated: Yes
Finished: Yes
Enclosed: Yes
Contiguous: Yes
Permitted: Yes
Wet space: Yes
Addition: No
Conversion: No

8 Floor 1 - Bath



Dimensions: 7'5" x 5'1"
Area: 38 sq. ft
Counted as living area: Yes

Heated: Yes
Finished: Yes
Enclosed: Yes
Contiguous: Yes
Permitted: Yes
Wet space: Yes
Addition: No
Conversion: No

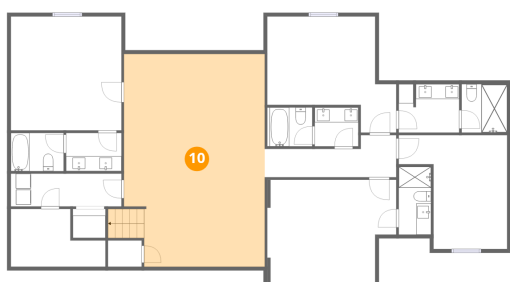
9 Floor 1 - Bedroom



Dimensions: 17'3" x 14'2"
Area: 225 sq. ft
Counted as living area: Yes

Heated: Yes
Finished: Yes
Enclosed: Yes
Contiguous: Yes
Permitted: Yes
Wet space: No
Addition: No
Conversion: No

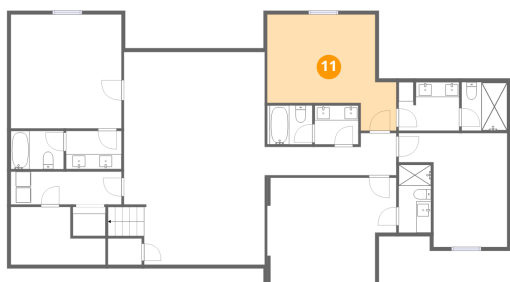
10 Floor 1 - Recreation Room



Dimensions: 18'10" x 28'5"
Area: 534 sq. ft
Counted as living area: Yes

Heated: Yes
Finished: Yes
Enclosed: Yes
Contiguous: Yes
Permitted: Yes
Wet space: No
Addition: No
Conversion: No

11 Floor 1 - Bedroom



Dimensions: 17'3" x 15'7"
Area: 197 sq. ft
Counted as living area: Yes

Heated: Yes
Finished: Yes
Enclosed: Yes
Contiguous: Yes
Permitted: Yes
Wet space: No
Addition: No
Conversion: No

12 Floor 1 - Bath



Dimensions: 7'1" x 5'1"
Area: 36 sq. ft
Counted as living area: Yes

Heated: Yes
Finished: Yes
Enclosed: Yes
Contiguous: Yes
Permitted: Yes
Wet space: Yes
Addition: No
Conversion: No

13 Floor 1 - Bedroom



Dimensions: 14'10" x 15'3"
Area: 226 sq. ft
Counted as living area: Yes

Heated: Yes
Finished: Yes
Enclosed: Yes
Contiguous: Yes
Permitted: Yes
Wet space: No
Addition: No
Conversion: No

14 Floor 1 - Bath



Dimensions: 6'1" x 6'6"
Area: 40 sq. ft
Counted as living area: Yes

Heated: Yes
Finished: Yes
Enclosed: Yes
Contiguous: Yes
Permitted: Yes
Wet space: Yes
Addition: No
Conversion: No

15 Floor 2 - Primary Bedroom



Dimensions: 17'4" x 16'5"
Area: 201 sq. ft
Counted as living area: Yes

Heated: Yes
Finished: Yes
Enclosed: Yes
Contiguous: Yes
Permitted: Yes
Wet space: No
Addition: No
Conversion: No

16 Floor 2 - Hall



Dimensions: 14'10" x 10'2"
Area: 80 sq. ft
Counted as living area: Yes

Heated: Yes
Finished: Yes
Enclosed: Yes
Contiguous: Yes
Permitted: Yes
Wet space: No
Addition: No
Conversion: No

17 Floor 2 - Bath



Dimensions: 5'1" x 4'10"
Area: 25 sq. ft
Counted as living area: Yes

Heated: Yes
Finished: Yes
Enclosed: Yes
Contiguous: Yes
Permitted: Yes
Wet space: Yes
Addition: No
Conversion: No

18 Floor 2 - Dining Area



Dimensions: 14'10" x 9'1"
Area: 134 sq. ft
Counted as living area: Yes

Heated: Yes
Finished: Yes
Enclosed: Yes
Contiguous: Yes
Permitted: Yes
Wet space: No
Addition: No
Conversion: No

19 Floor 2 - Laundry



Dimensions: 8'2" x 6'10"
Area: 56 sq. ft
Counted as living area: Yes

Heated: Yes
Finished: Yes
Enclosed: Yes
Contiguous: Yes
Permitted: Yes
Wet space: No
Addition: No
Conversion: No

20 Floor 2 - Living Room



Dimensions: 19'2" x 28'6"
Area: 600 sq. ft
Counted as living area: Yes

Heated: Yes
Finished: Yes
Enclosed: Yes
Contiguous: Yes
Permitted: Yes
Wet space: No
Addition: No
Conversion: No

21 Floor 2 - Bedroom



Dimensions: 14'5" x 14'4"
Area: 192 sq. ft
Counted as living area: Yes

Heated: Yes
Finished: Yes
Enclosed: Yes
Contiguous: Yes
Permitted: Yes
Wet space: No
Addition: No
Conversion: No

22 Floor 2 - Bath



Dimensions: 6'5" x 9'1"
Area: 59 sq. ft
Counted as living area: Yes

Heated: Yes
Finished: Yes
Enclosed: Yes
Contiguous: Yes
Permitted: Yes
Wet space: Yes
Addition: No
Conversion: No

23 Floor 2 - Bedroom



Dimensions: 14'6" x 10'9"
Area: 156 sq. ft
Counted as living area: Yes

Heated: Yes
Finished: Yes
Enclosed: Yes
Contiguous: Yes
Permitted: Yes
Wet space: No
Addition: No
Conversion: No

24 Floor 2 - Bath



Dimensions: 5'1" x 4'10"
Area: 25 sq. ft
Counted as living area: Yes

Heated: Yes
Finished: Yes
Enclosed: Yes
Contiguous: Yes
Permitted: Yes
Wet space: Yes
Addition: No
Conversion: No

25 Floor 2 - Pantry



Dimensions: 4'11" x 4'6"
Area: 22 sq. ft
Counted as living area: Yes

Heated: Yes
Finished: Yes
Enclosed: Yes
Contiguous: Yes
Permitted: Yes
Wet space: No
Addition: No
Conversion: No

26 Floor 2 - Hall



Dimensions: 8'2" x 5'6"
Area: 45 sq. ft
Counted as living area: Yes

Heated: Yes
Finished: Yes
Enclosed: Yes
Contiguous: Yes
Permitted: Yes
Wet space: No
Addition: No
Conversion: No

27 Floor 2 - Garage



Dimensions: 29'9" x 22'2"
Area: 627 sq. ft
Counted as living area: No

Heated: No
Finished: No
Enclosed: Yes
Contiguous: Yes
Permitted: Yes
Wet space: No
Addition: No
Conversion: No

28 Floor 2 - Bath



Dimensions: 6'7" x 5'3"
Area: 35 sq. ft
Counted as living area: Yes

Heated: Yes
Finished: Yes
Enclosed: Yes
Contiguous: Yes
Permitted: Yes
Wet space: Yes
Addition: No
Conversion: No

29 Floor 2 - Bath



Dimensions: 10'5" x 5'3"
Area: 45 sq. ft
Counted as living area: Yes

Heated: Yes
Finished: Yes
Enclosed: Yes
Contiguous: Yes
Permitted: Yes
Wet space: Yes
Addition: No
Conversion: No

30 Floor 2 - Kitchen



Dimensions: 14'10" x 14'9"
Area: 211 sq. ft
Counted as living area: Yes

Heated: Yes
Finished: Yes
Enclosed: Yes
Contiguous: Yes
Permitted: Yes
Wet space: No
Addition: No
Conversion: No