

## Home data report

6923 Old Mill Road, Holly Ridge, Roanoke, Roanoke County, Virginia, United States, 24018



**Total Area: 2105 sq. ft**

Basement: 585 sq. ft, 1st Floor: 1071 sq. ft, 2nd Floor: 449 sq. ft

Excluded: Storage 215 sq. ft, Utility 287 sq. ft, Laundry 87 sq. ft, Patio 343 sq. ft, Porch 348 sq. ft, Deck 244 sq. ft, Walls: 190 sq. ft

## Property summary

 **3** Floors

 **4** Bedrooms

 **2** Bathrooms

## Home data report

6923 Old Mill Road, Holly Ridge, Roanoke, Roanoke County, Virginia, United States, 24018



## Room dimensions

Floor 1 Below grade

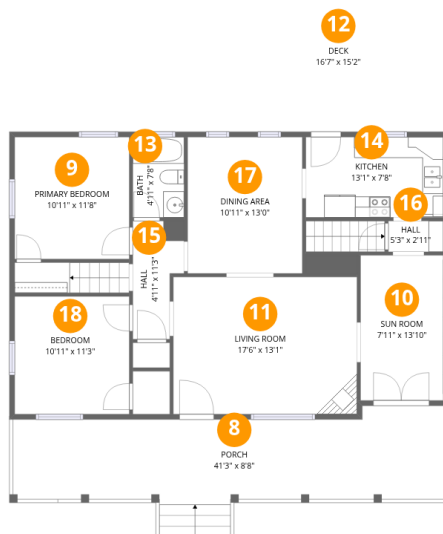
Total:585sqft

Excluded: 829sqft

#		Dimensions	sqft	Counted as living area
1	Recreation Room	24'4" x 18'4"	447 sq. ft	Yes
2	Storage	7'11" x 13'10"	109 sq. ft	No
3	Patio	19'3" x 17'9"	342 sq. ft	No
4	Bath	10'3" x 7'8"	78 sq. ft	Yes
5	Mudroom	7'11" x 15'2"	120 sq. ft	Yes
6	Utility	22'1" x 13'8"	303 sq. ft	No
7	Laundry	7'11" x 10'11"	87 sq. ft	No

Home data report

6923 Old Mill Road, Holly Ridge, Roanoke, Roanoke County, Virginia, United States, 24018



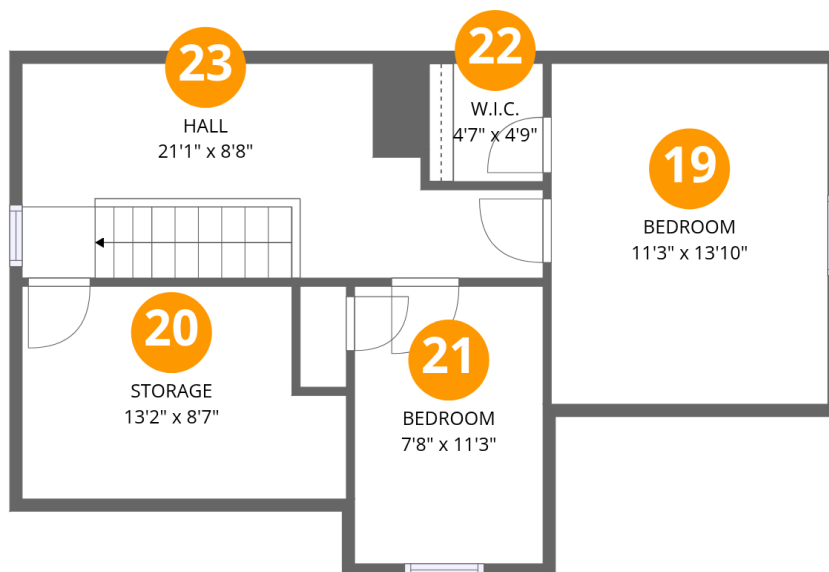
## Room dimensions

Floor 2

Total:1071sqft Excluded: 592sqft

#		Dimensions	sqft	Counted as living area
8	Porch	41'3" x 8'8"	357 sq. ft	No
9	Primary Bedroom	10'11" x 11'8"	127 sq. ft	Yes
10	Sun Room	7'11" x 13'10"	109 sq. ft	Yes
11	Living Room	17'6" x 13'1"	229 sq. ft	Yes
12	Deck	16'7" x 15'2"	252 sq. ft	No
13	Bath	4'11" x 7'8"	38 sq. ft	Yes
14	Kitchen	13'1" x 7'8"	101 sq. ft	Yes
15	Hall	4'11" x 11'3"	55 sq. ft	Yes
16	Hall	5'3" x 2'11"	15 sq. ft	Yes
17	Dining Area	10'11" x 13'0"	143 sq. ft	Yes
18	Bedroom	10'11" x 11'3"	123 sq. ft	Yes

6923 Old Mill Road, Holly Ridge, Roanoke, Roanoke County, Virginia, United States, 24018



### Room dimensions

Floor 3

Total:449sqft

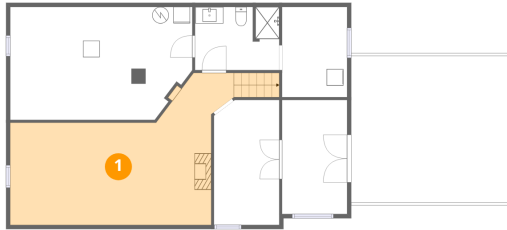
Excluded: 103sqft

#		Dimensions	sqft	Counted as living area
19	Bedroom	11'3" x 13'10"	155 sq. ft	Yes
20	Storage	13'2" x 8'7"	113 sq. ft	No
21	Bedroom	7'8" x 11'3"	86 sq. ft	Yes
22	W.I.C.	4'7" x 4'9"	22 sq. ft	Yes
23	Hall	21'1" x 8'8"	184 sq. ft	Yes

6923 Old Mill Road, Holly Ridge, Roanoke, Roanoke County,  
Virginia, United States, 24018

**1** Floor 1 - Recreation Room

---

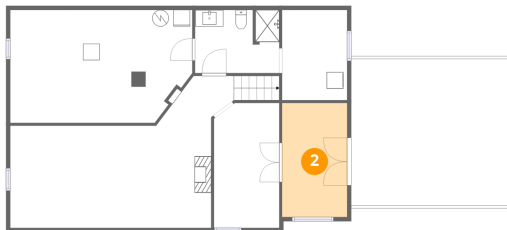


Dimensions: 24'4" x 18'4"  
Area: 447 sq. ft  
Counted as living area: Yes

Heated: Yes  
Finished: Yes  
Enclosed: Yes  
Contiguous: Yes  
Permitted: Yes  
Wet space: No  
Addition: No  
Conversion: No

**2** Floor 1 - Storage

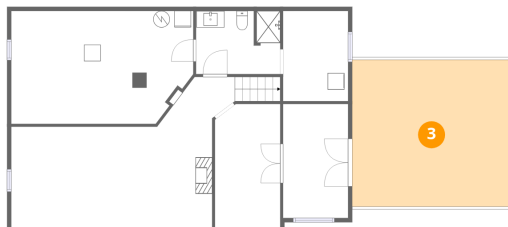
---



Dimensions: 7'11" x 13'10"  
Area: 109 sq. ft  
Counted as living area: No

Heated: No  
Finished: No  
Enclosed: No  
Contiguous: Yes  
Permitted: Yes  
Wet space: No  
Addition: No  
Conversion: No

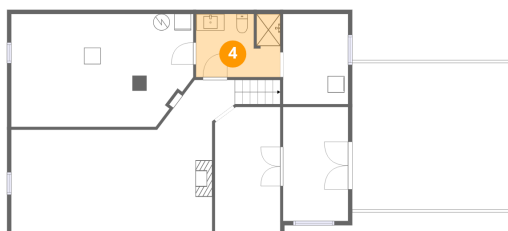
### 3 Floor 1 - Patio



Dimensions: 19'3" x 17'9"  
Area: 342 sq. ft  
Counted as living area: No

Heated: No  
Finished: No  
Enclosed: No  
Contiguous: Yes  
Permitted: Yes  
Wet space: No  
Addition: No  
Conversion: No

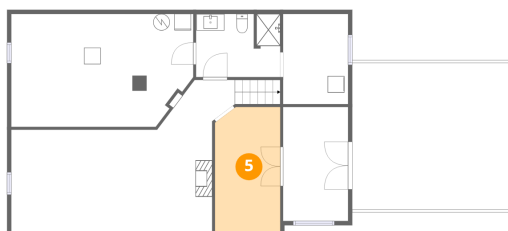
### 4 Floor 1 - Bath



Dimensions: 10'3" x 7'8"  
Area: 78 sq. ft  
Counted as living area: Yes

Heated: Yes  
Finished: Yes  
Enclosed: Yes  
Contiguous: Yes  
Permitted: Yes  
Wet space: Yes  
Addition: No  
Conversion: No

### 5 Floor 1 - Mudroom

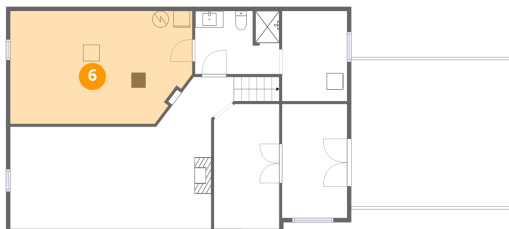


Dimensions: 7'11" x 15'2"  
Area: 120 sq. ft  
Counted as living area: Yes

Heated: Yes  
Finished: Yes  
Enclosed: Yes  
Contiguous: Yes  
Permitted: Yes  
Wet space: No  
Addition: No  
Conversion: No

6923 Old Mill Road, Holly Ridge, Roanoke, Roanoke County, Virginia, United States, 24018

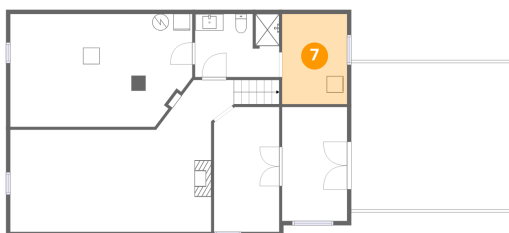
### 6 Floor 1 - Utility



Dimensions: 22'1" x 13'8"  
Area: 303 sq. ft  
Counted as living area: No

Heated: Yes  
Finished: No  
Enclosed: Yes  
Contiguous: Yes  
Permitted: Yes  
Wet space: No  
Addition: No  
Conversion: No

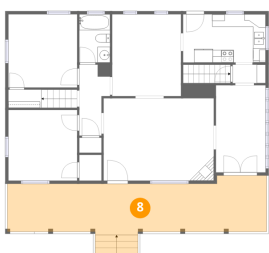
### 7 Floor 1 - Laundry



Dimensions: 7'11" x 10'11"  
Area: 87 sq. ft  
Counted as living area: No

Heated: Yes  
Finished: No  
Enclosed: Yes  
Contiguous: Yes  
Permitted: Yes  
Wet space: No  
Addition: No  
Conversion: No

### 8 Floor 2 - Porch

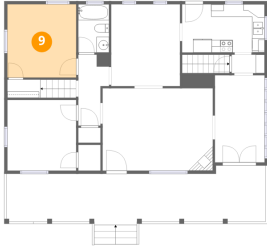


Dimensions: 41'3" x 8'8"  
Area: 357 sq. ft  
Counted as living area: No

Heated: No  
Finished: No  
Enclosed: No  
Contiguous: Yes  
Permitted: Yes  
Wet space: No  
Addition: No  
Conversion: No

6923 Old Mill Road, Holly Ridge, Roanoke, Roanoke County,  
Virginia, United States, 24018

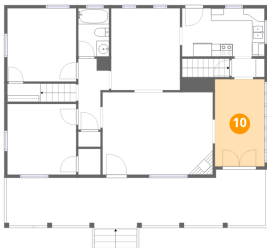
### 9 Floor 2 - Primary Bedroom



Dimensions: 10'11" x 11'8"  
Area: 127 sq. ft  
Counted as living area: Yes

Heated: Yes  
Finished: Yes  
Enclosed: Yes  
Contiguous: Yes  
Permitted: Yes  
Wet space: No  
Addition: No  
Conversion: No

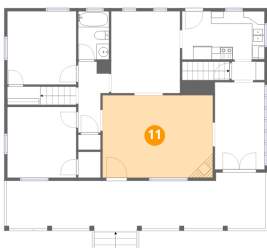
### 10 Floor 2 - Sun Room



Dimensions: 7'11" x 13'10"  
Area: 109 sq. ft  
Counted as living area: Yes

Heated: Yes  
Finished: Yes  
Enclosed: Yes  
Contiguous: Yes  
Permitted: Yes  
Wet space: No  
Addition: No  
Conversion: No

### 11 Floor 2 - Living Room

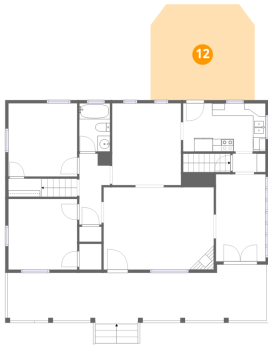


Dimensions: 17'6" x 13'1"  
Area: 229 sq. ft  
Counted as living area: Yes

Heated: Yes  
Finished: Yes  
Enclosed: Yes  
Contiguous: Yes  
Permitted: Yes  
Wet space: No  
Addition: No  
Conversion: No

6923 Old Mill Road, Holly Ridge, Roanoke, Roanoke County, Virginia, United States, 24018

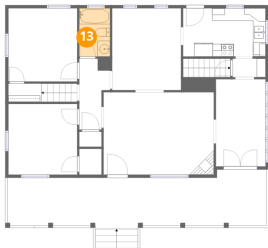
## 12 Floor 2 - Deck



Dimensions: 16'7" x 15'2"  
Area: 252 sq. ft  
Counted as living area: No

Heated: No  
Finished: No  
Enclosed: No  
Contiguous: Yes  
Permitted: Yes  
Wet space: No  
Addition: No  
Conversion: No

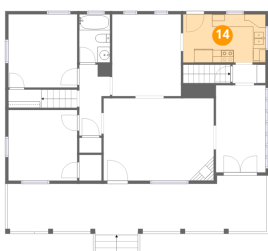
## 13 Floor 2 - Bath



Dimensions: 4'11" x 7'8"  
Area: 38 sq. ft  
Counted as living area: Yes

Heated: Yes  
Finished: Yes  
Enclosed: Yes  
Contiguous: Yes  
Permitted: Yes  
Wet space: Yes  
Addition: No  
Conversion: No

## 14 Floor 2 - Kitchen

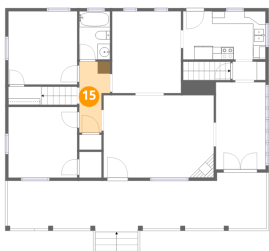


Dimensions: 13'1" x 7'8"  
Area: 101 sq. ft  
Counted as living area: Yes

Heated: Yes  
Finished: Yes  
Enclosed: Yes  
Contiguous: Yes  
Permitted: Yes  
Wet space: No  
Addition: No  
Conversion: No

6923 Old Mill Road, Holly Ridge, Roanoke, Roanoke County, Virginia, United States, 24018

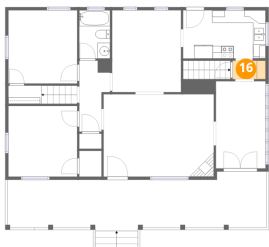
### 15 Floor 2 - Hall



Dimensions: 4'11" x 11'3"  
Area: 55 sq. ft  
Counted as living area: Yes

Heated: Yes  
Finished: Yes  
Enclosed: Yes  
Contiguous: Yes  
Permitted: Yes  
Wet space: No  
Addition: No  
Conversion: No

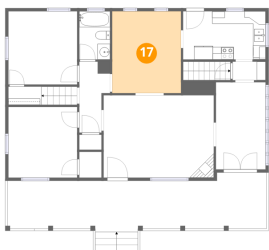
### 16 Floor 2 - Hall



Dimensions: 5'3" x 2'11"  
Area: 15 sq. ft  
Counted as living area: Yes

Heated: Yes  
Finished: Yes  
Enclosed: Yes  
Contiguous: Yes  
Permitted: Yes  
Wet space: No  
Addition: No  
Conversion: No

### 17 Floor 2 - Dining Area

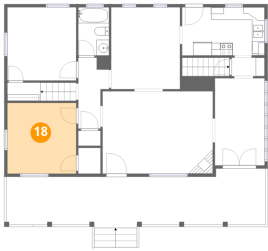


Dimensions: 10'11" x 13'0"  
Area: 143 sq. ft  
Counted as living area: Yes

Heated: Yes  
Finished: Yes  
Enclosed: Yes  
Contiguous: Yes  
Permitted: Yes  
Wet space: No  
Addition: No  
Conversion: No

6923 Old Mill Road, Holly Ridge, Roanoke, Roanoke County, Virginia, United States, 24018

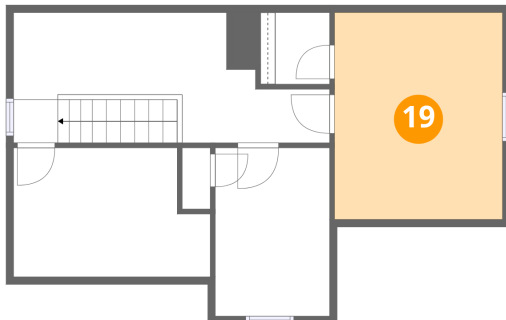
### 18 Floor 2 - Bedroom



Dimensions: 10'11" x 11'3"  
Area: 123 sq. ft  
Counted as living area: Yes

Heated: Yes  
Finished: Yes  
Enclosed: Yes  
Contiguous: Yes  
Permitted: Yes  
Wet space: No  
Addition: No  
Conversion: No

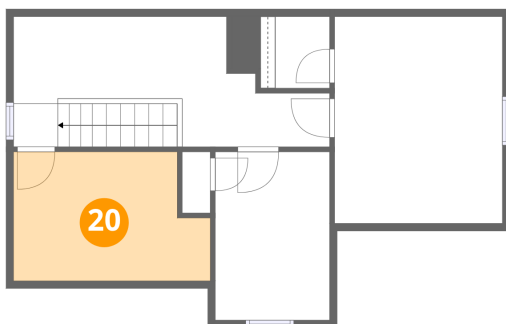
### 19 Floor 3 - Bedroom



Dimensions: 11'3" x 13'10"  
Area: 155 sq. ft  
Counted as living area: Yes

Heated: Yes  
Finished: Yes  
Enclosed: Yes  
Contiguous: Yes  
Permitted: Yes  
Wet space: No  
Addition: No  
Conversion: No

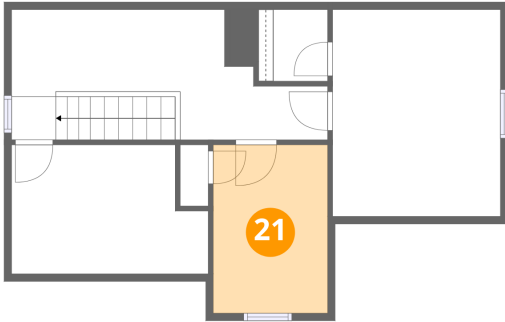
### 20 Floor 3 - Storage



Dimensions: 13'2" x 8'7"  
Area: 113 sq. ft  
Counted as living area: No

Heated: No  
Finished: No  
Enclosed: No  
Contiguous: No  
Permitted: Yes  
Wet space: No  
Addition: No  
Conversion: No

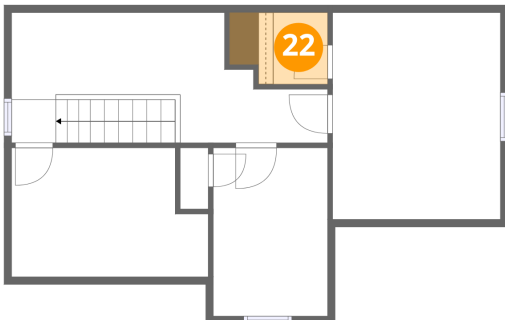
**21** Floor 3 - Bedroom



Dimensions: 7'8" x 11'3"  
Area: 86 sq. ft  
Counted as living area: Yes

Heated: Yes  
Finished: Yes  
Enclosed: Yes  
Contiguous: Yes  
Permitted: Yes  
Wet space: No  
Addition: No  
Conversion: No

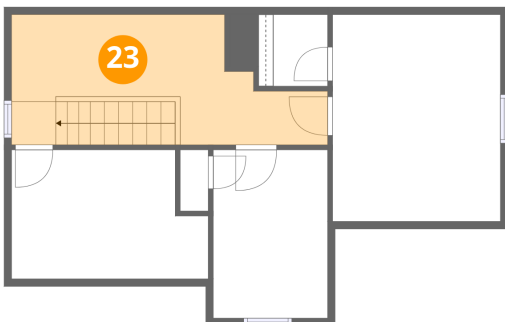
**22** Floor 3 - W.I.C.



Dimensions: 4'7" x 4'9"  
Area: 22 sq. ft  
Counted as living area: Yes

Heated: Yes  
Finished: Yes  
Enclosed: Yes  
Contiguous: Yes  
Permitted: Yes  
Wet space: No  
Addition: No  
Conversion: No

**23** Floor 3 - Hall



Dimensions: 21'1" x 8'8"  
Area: 184 sq. ft  
Counted as living area: Yes

Heated: Yes  
Finished: Yes  
Enclosed: Yes  
Contiguous: Yes  
Permitted: Yes  
Wet space: No  
Addition: No  
Conversion: No