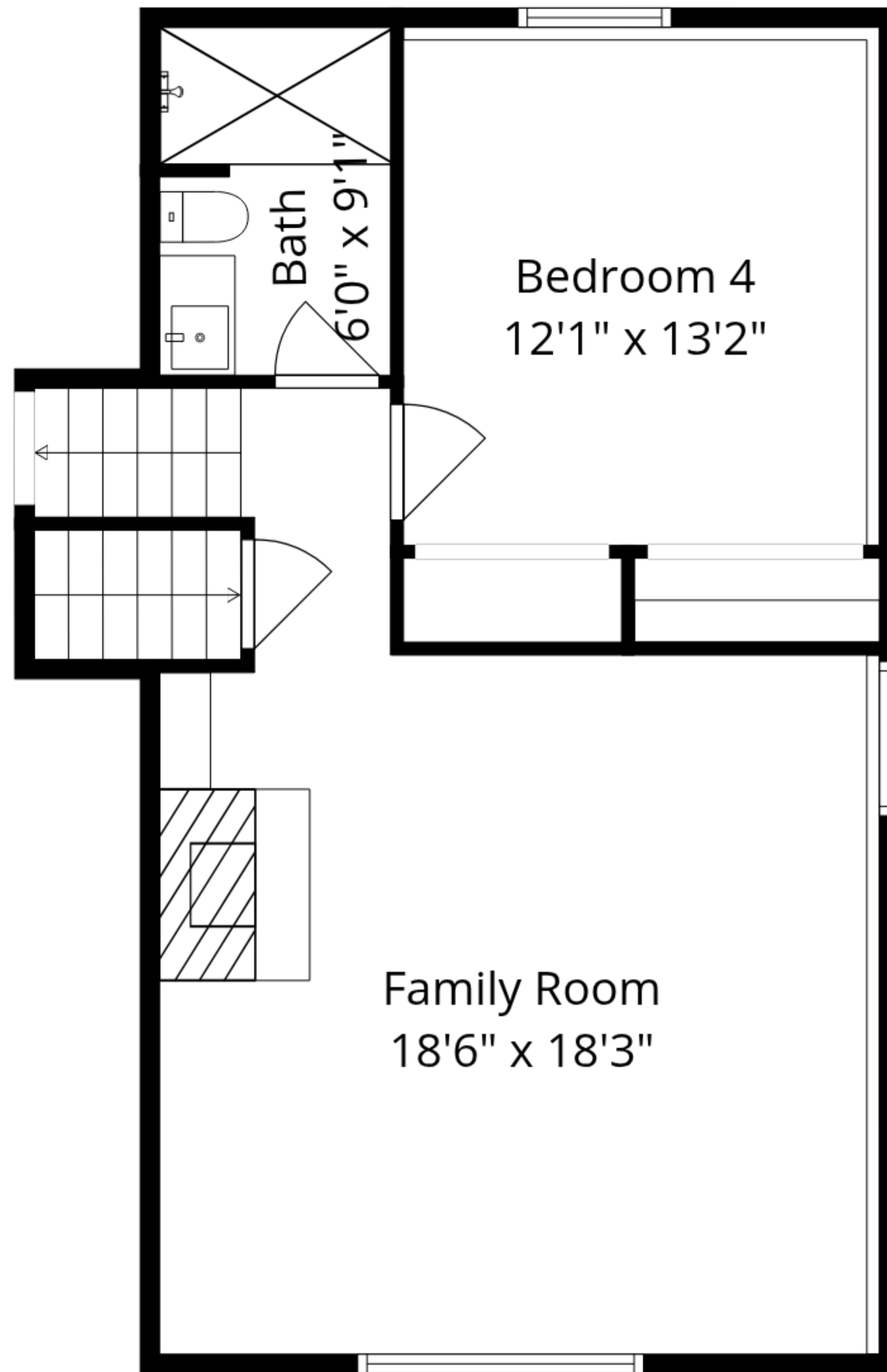


Utility
21'8" x 12'9"

Basement
21'8" x 11'6"

Total GLA: 2212 sq. ft | Total: 3402 sq. ft
Basement: (Excluded areas 592 sq. ft)
Lower floor: 731 sq. ft
Main floor: 776 sq. ft (Excluded areas 598 sq. ft)
Upper floor: 705 sq. ft

Sizes And Dimensions Are Approximate. Actual May Vary.



Total GLA: 2212 sq. ft | Total: 3402 sq. ft

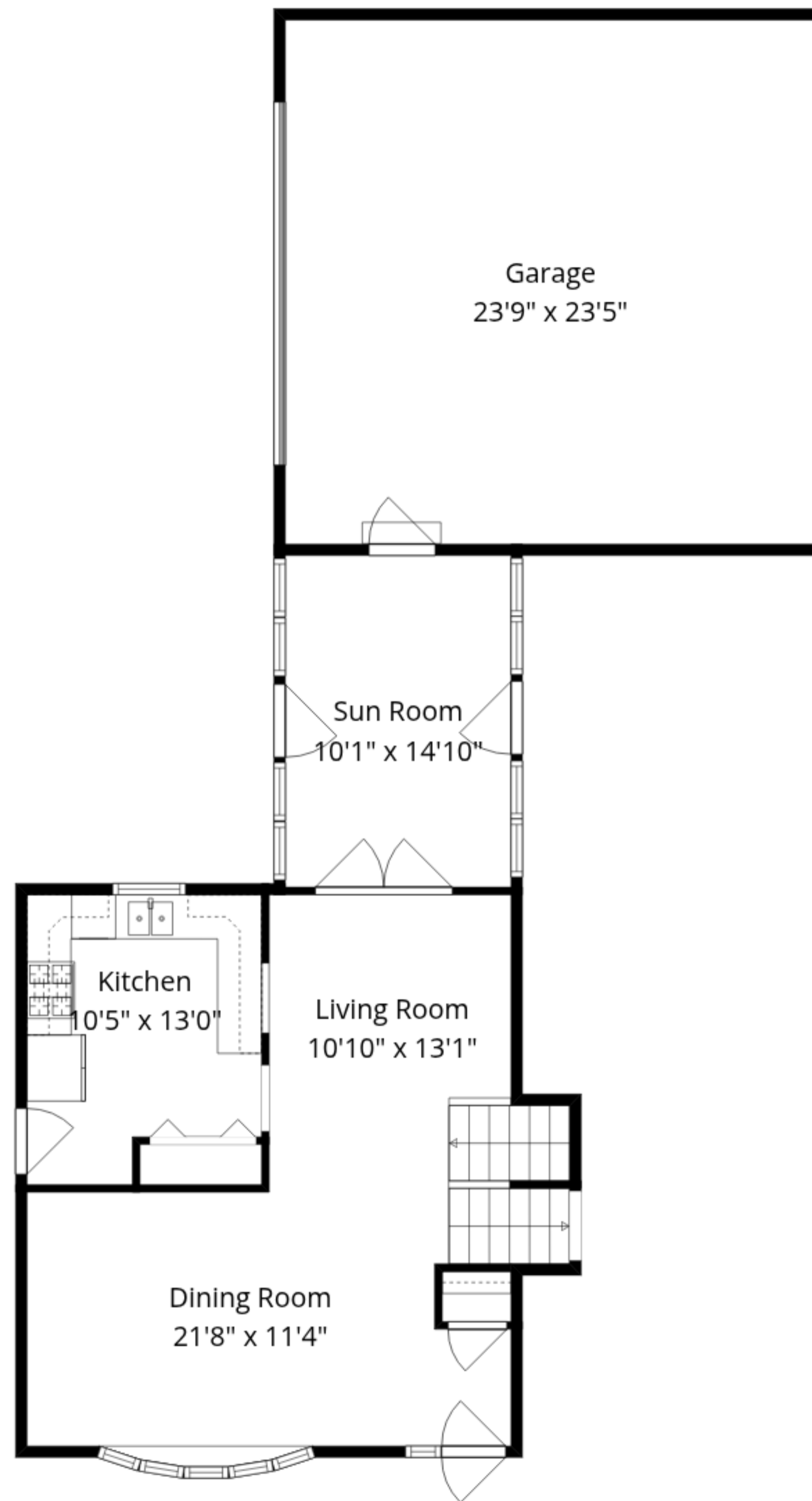
Basement: (Excluded areas 592 sq. ft)

Lower floor: 731 sq. ft

Main floor: 776 sq. ft (Excluded areas 598 sq. ft)

Upper floor: 705 sq. ft

Sizes And Dimensions Are Approximate. Actual May Vary.



Total GLA: 2212 sq. ft | Total: 3402 sq. ft

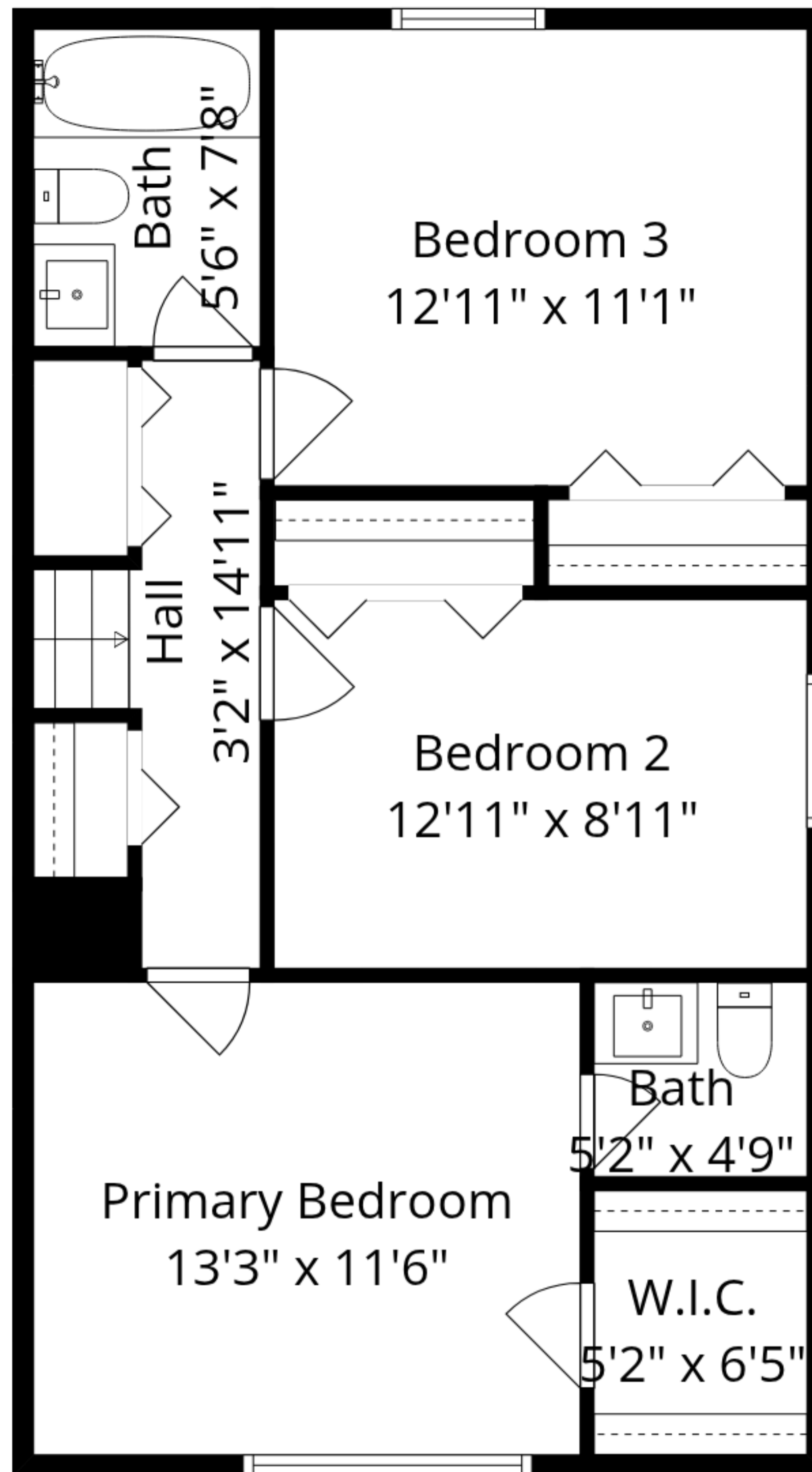
Basement: (Excluded areas 592 sq. ft)

Lower floor: 731 sq. ft

Main floor: 776 sq. ft (Excluded areas 598 sq. ft)

Upper floor: 705 sq. ft

Sizes And Dimensions Are Approximate. Actual May Vary.



Total GLA: 2212 sq. ft | Total: 3402 sq. ft

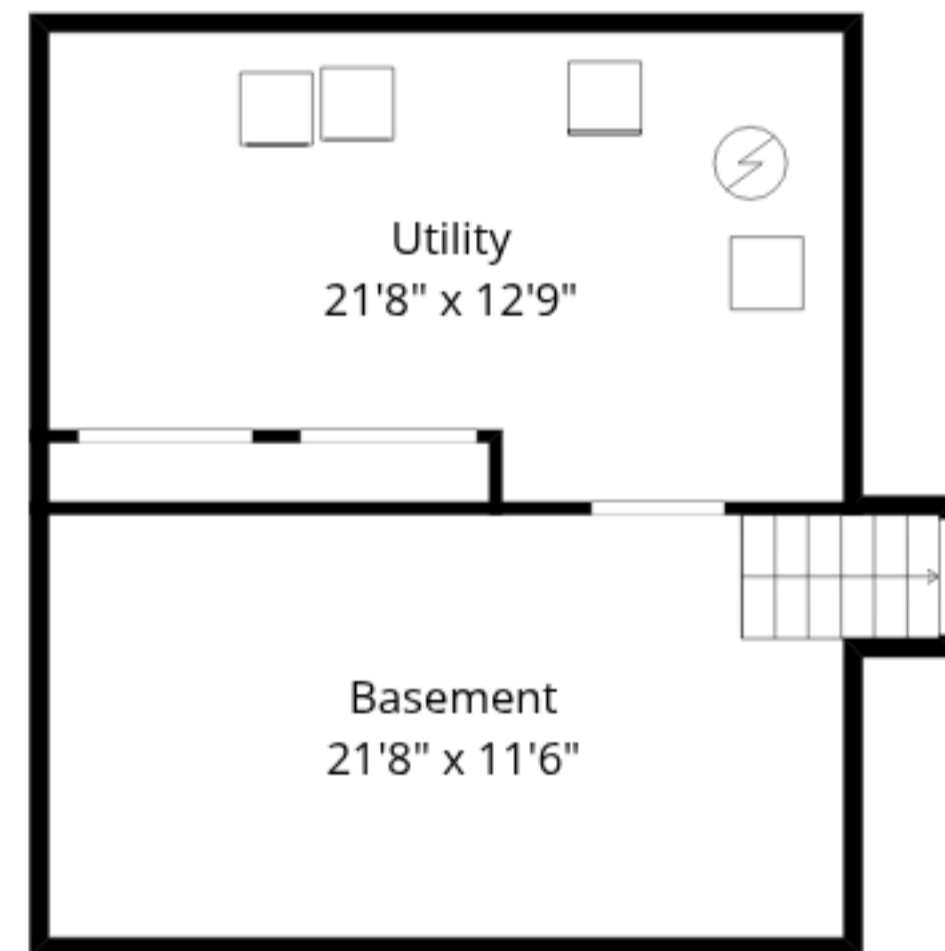
Basement: (Excluded areas 592 sq. ft)

Lower floor: 731 sq. ft

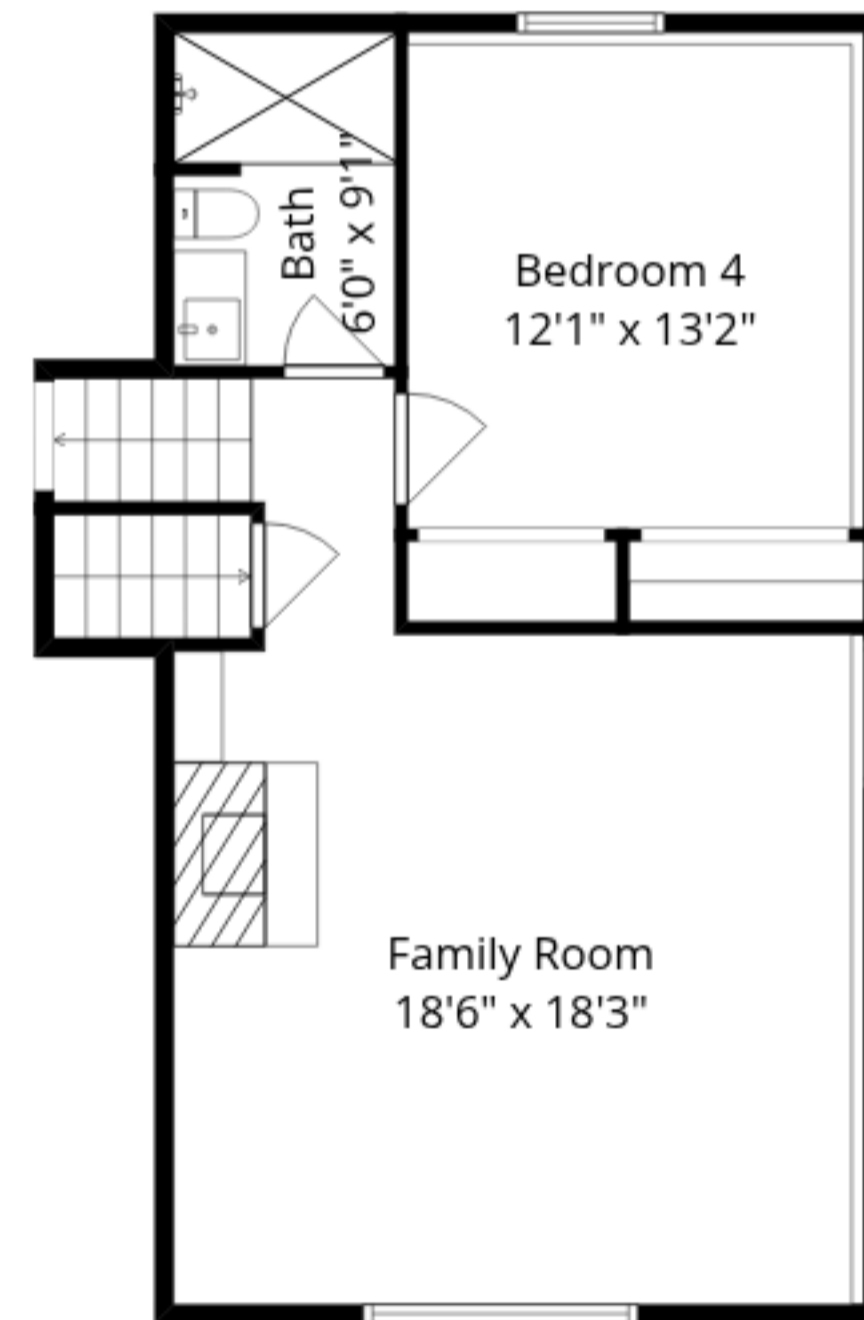
Main floor: 776 sq. ft (Excluded areas 598 sq. ft)

Upper floor: 705 sq. ft

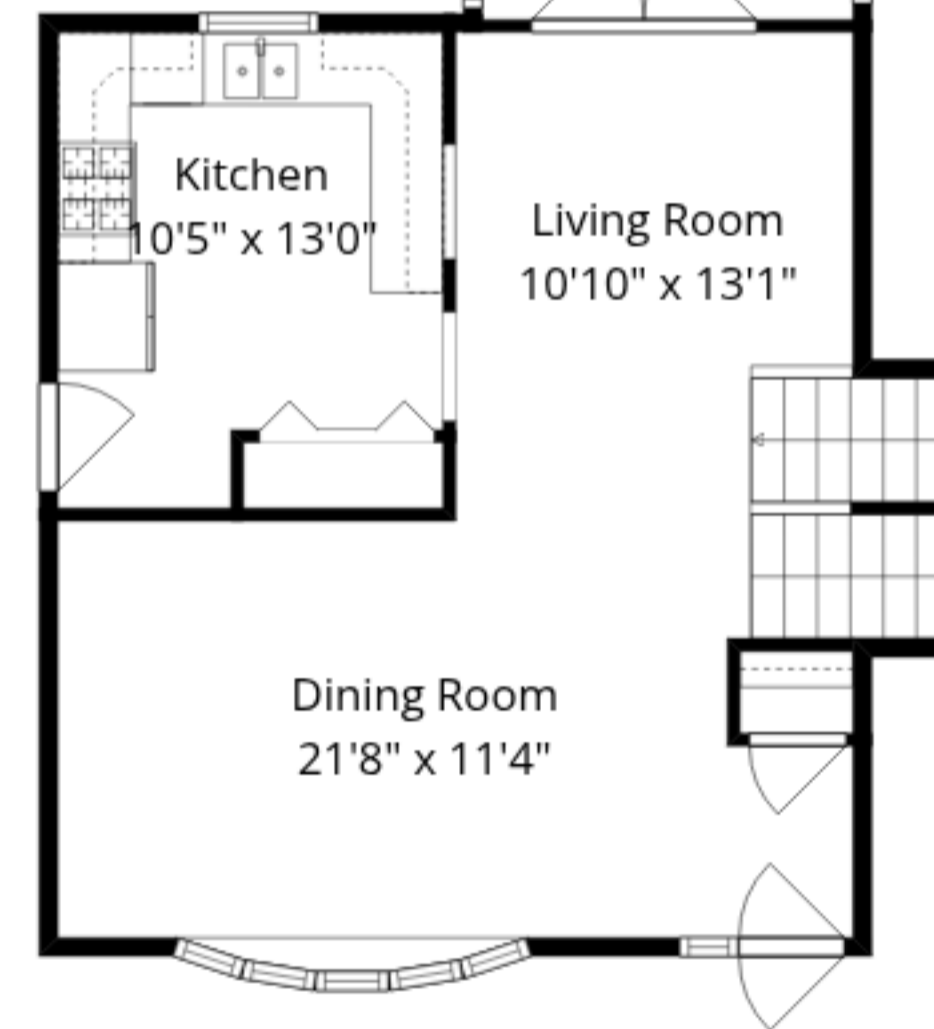
Sizes And Dimensions Are Approximate. Actual May Vary.



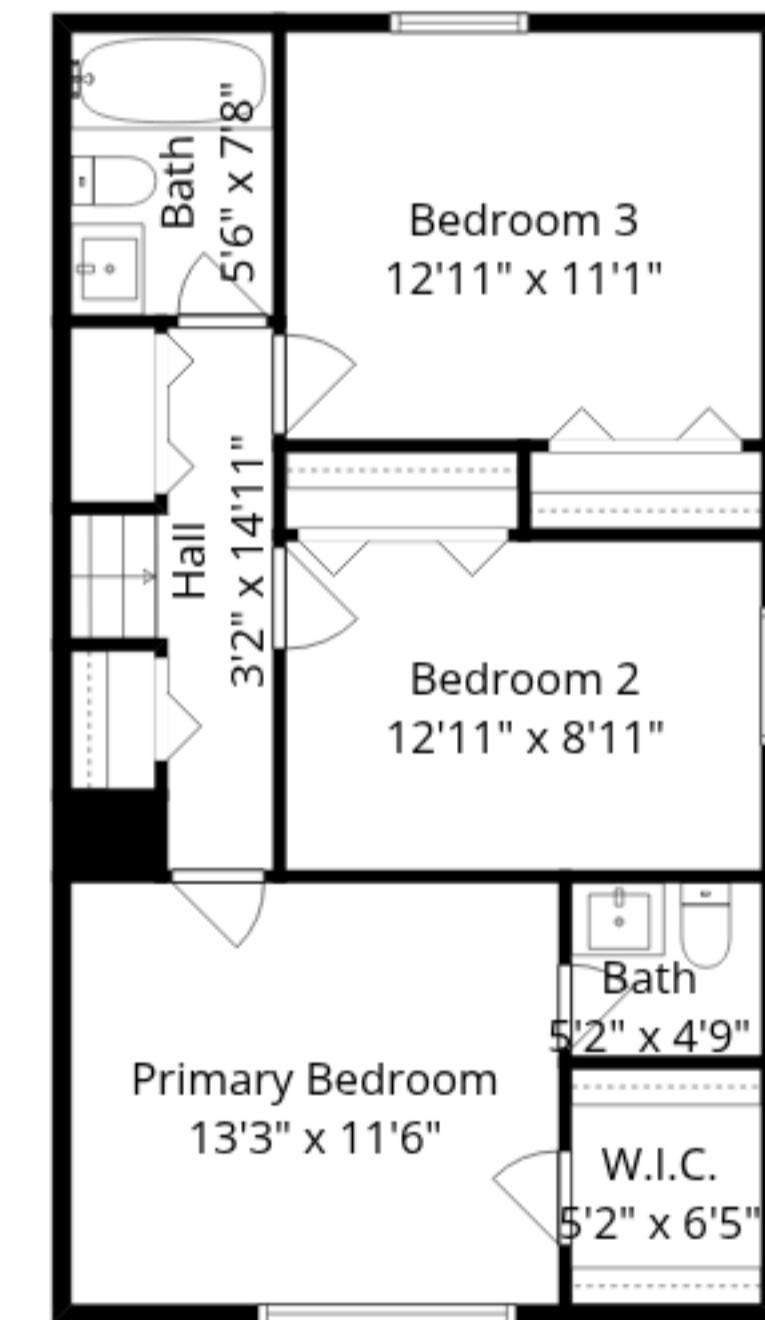
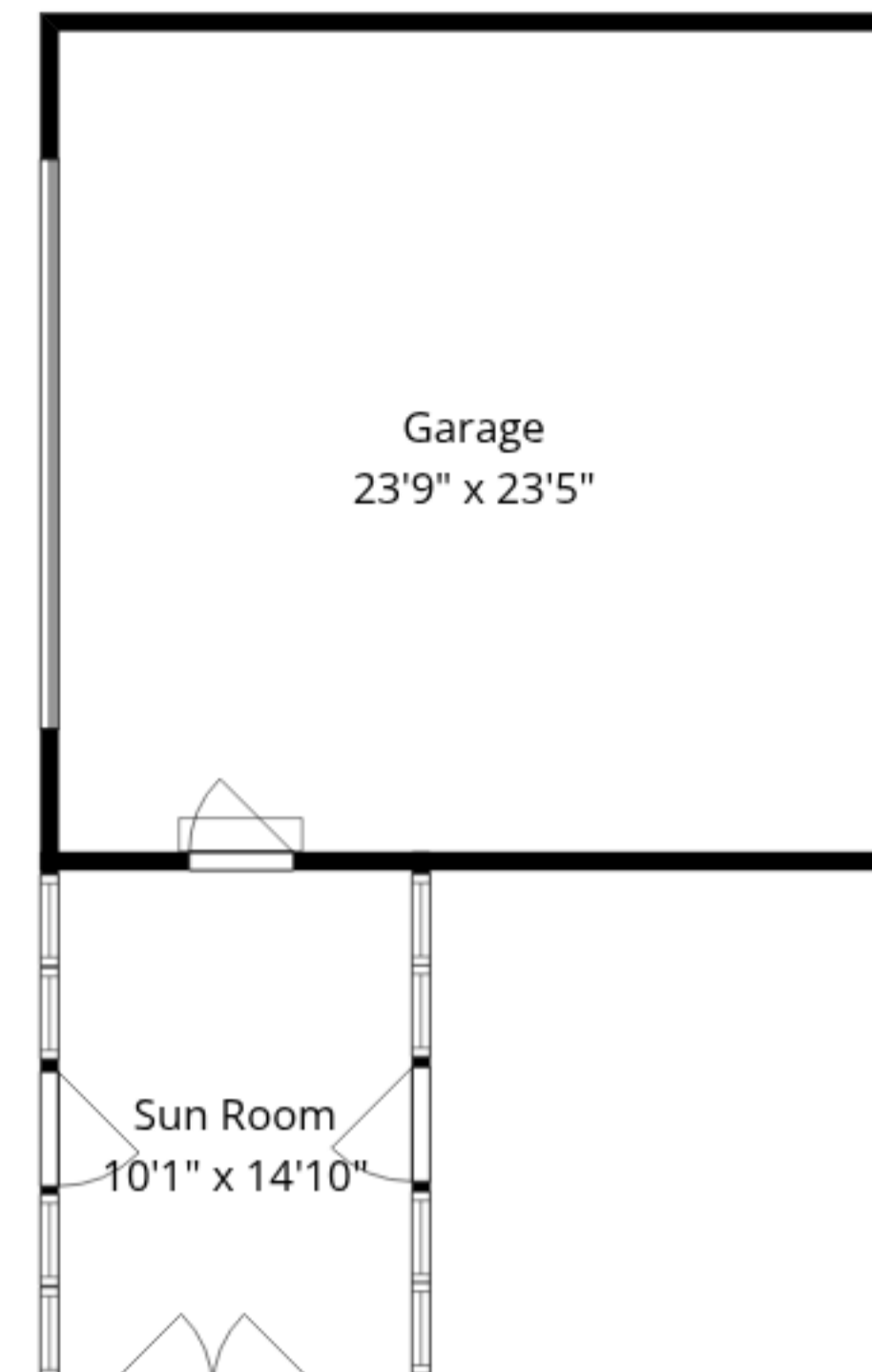
Basement



Lower Floor



Main Floor



Upper Floor

Total GLA: 2212 sq. ft | Total: 3402 sq. ft

Basement: (Excluded areas 592 sq. ft)

Lower floor: 731 sq. ft

Main floor: 776 sq. ft (Excluded areas 598 sq. ft)

Upper floor: 705 sq. ft

Sizes And Dimensions Are Approximate. Actual May Vary.