

Home data report

**829 Kiniw Private, Wateridge Village, Viscount Alexander Park,
Ottawa, Ontario, Canada, K1K 5A3**



Total Area: 1622 sq. ft

1st Floor: 292 sq. ft, 2nd Floor: 665 sq. ft, 3rd Floor: 665 sq. ft

Excluded: Utility 57 sq. ft, Garage 250 sq. ft, Balcony 115 sq. ft, Walls: 150 sq. ft

Property summary



Home data report

**829 Kiniw Private, Wateridge Village, Viscount Alexander Park,
Ottawa, Ontario, Canada, K1K 5A3**

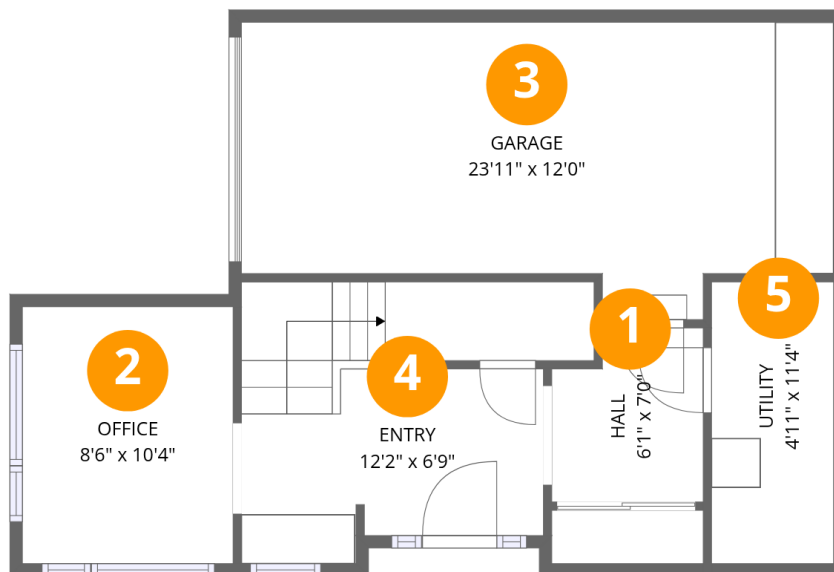


1
Half baths



1
Garages

**829 Kiniw Private, Wateridge Village, Viscount Alexander Park,
Ottawa, Ontario, Canada, K1K 5A3**



Room dimensions

Floor 1

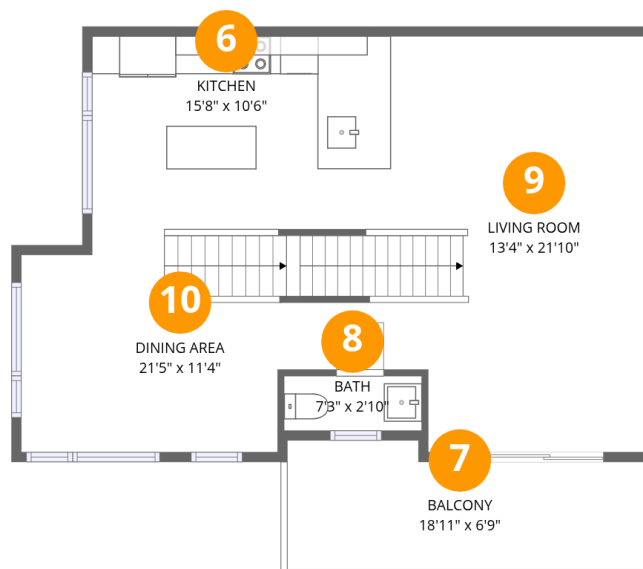
Total:292sqft

Excluded: 307sqft

#		Dimensions	sqft	Counted as living area
1	Hall	6'1" x 7'0"	43 sq. ft	Yes
2	Office	8'6" x 10'4"	87 sq. ft	Yes
3	Garage	23'11" x 12'0"	286 sq. ft	No
4	Entry	12'2" x 6'9"	82 sq. ft	Yes
5	Utility	4'11" x 11'4"	56 sq. ft	No

Home data report

829 Kiniw Private, Wateridge Village, Viscount Alexander Park,
Ottawa, Ontario, Canada, K1K 5A3



Room dimensions

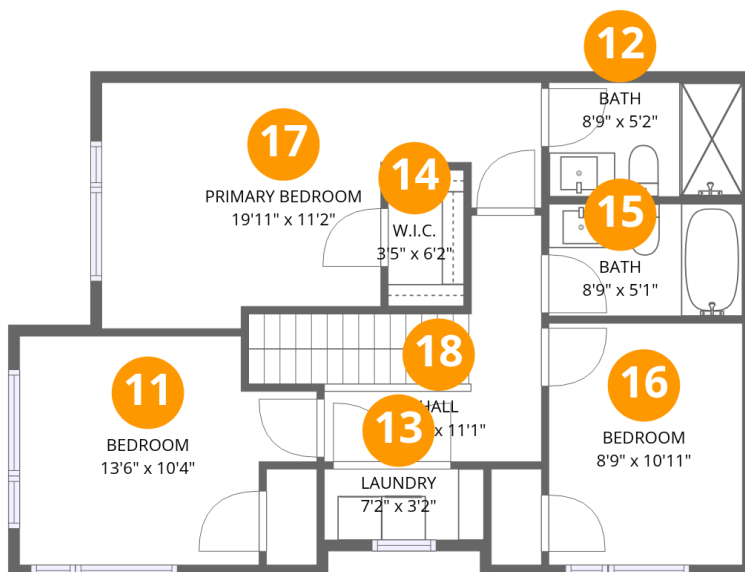
Floor 2

Total:665sqft

Excluded: 115sqft

#		Dimensions	sqft	Counted as living area
6	Kitchen	15'8" x 10'6"	164 sq. ft	Yes
7	Balcony	18'11" x 6'9"	128 sq. ft	No
8	Bath	7'3" x 2'10"	21 sq. ft	Yes
9	Living Room	13'4" x 21'10"	291 sq. ft	Yes
10	Dining Area	21'5" x 11'4"	242 sq. ft	Yes

829 Kiniw Private, Wateridge Village, Viscount Alexander Park, Ottawa, Ontario, Canada, K1K 5A3



Room dimensions

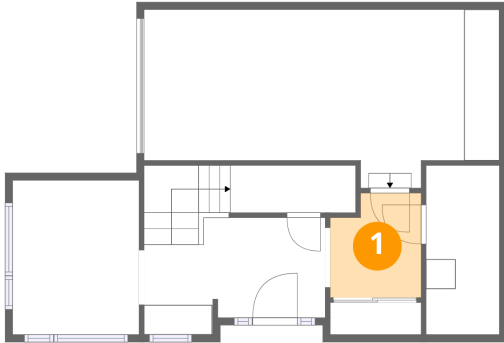
Floor 3

Total:665sqft Excluded: 0sqft

#		Dimensions	sqft	Counted as living area
11	Bedroom	13'6" x 10'4"	140 sq. ft	Yes
12	Bath	8'9" x 5'2"	45 sq. ft	Yes
13	Laundry	7'2" x 3'2"	23 sq. ft	Yes
14	W.I.C.	3'5" x 6'2"	21 sq. ft	Yes
15	Bath	8'9" x 5'1"	44 sq. ft	Yes
16	Bedroom	8'9" x 10'11"	96 sq. ft	Yes
17	Primary Bedroom	19'11" x 11'2"	222 sq. ft	Yes
18	Hall	9'10" x 11'1"	109 sq. ft	Yes

829 Kiniw Private, Wateridge Village, Viscount Alexander Park,
Ottawa, Ontario, Canada, K1K 5A3

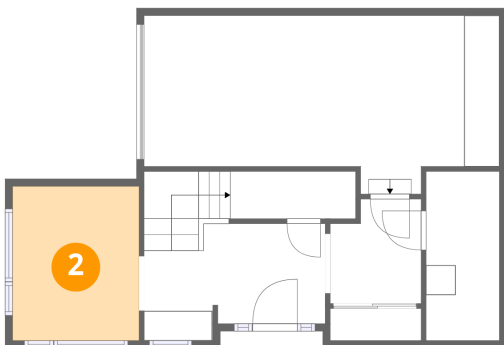
1 Floor 1 - Hall



Dimensions: 6'1" x 7'0"
Area: 43 sq. ft
Counted as living area: Yes

Heated: Yes
Finished: Yes
Enclosed: Yes
Contiguous: Yes
Permitted: Yes
Wet space: No
Addition: No
Conversion: No

2 Floor 1 - Office

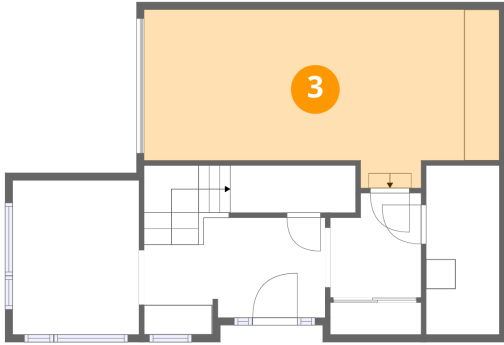


Dimensions: 8'6" x 10'4"
Area: 87 sq. ft
Counted as living area: Yes

Heated: Yes
Finished: Yes
Enclosed: Yes
Contiguous: Yes
Permitted: Yes
Wet space: No
Addition: No
Conversion: No

829 Kiniw Private, Wateridge Village, Viscount Alexander Park,
Ottawa, Ontario, Canada, K1K 5A3

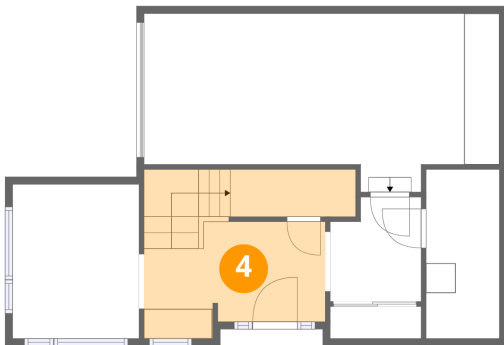
3 Floor 1 - Garage



Dimensions: 23'11" x 12'0"
Area: 286 sq. ft
Counted as living area: No

Heated: No
Finished: No
Enclosed: Yes
Contiguous: Yes
Permitted: Yes
Wet space: No
Addition: No
Conversion: No

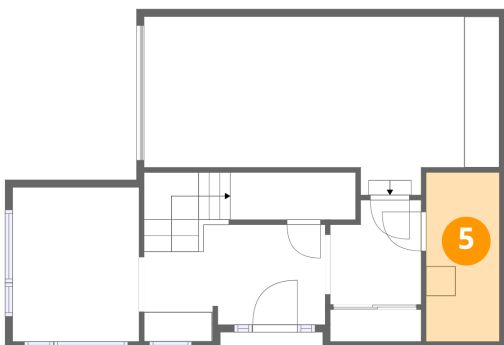
4 Floor 1 - Entry



Dimensions: 12'2" x 6'9"
Area: 82 sq. ft
Counted as living area: Yes

Heated: Yes
Finished: Yes
Enclosed: Yes
Contiguous: Yes
Permitted: Yes
Wet space: No
Addition: No
Conversion: No

5 Floor 1 - Utility



Dimensions: 4'11" x 11'4"
Area: 56 sq. ft
Counted as living area: No

Heated: Yes
Finished: No
Enclosed: Yes
Contiguous: Yes
Permitted: Yes
Wet space: No
Addition: No
Conversion: No

829 Kiniw Private, Wateridge Village, Viscount Alexander Park,
Ottawa, Ontario, Canada, K1K 5A3

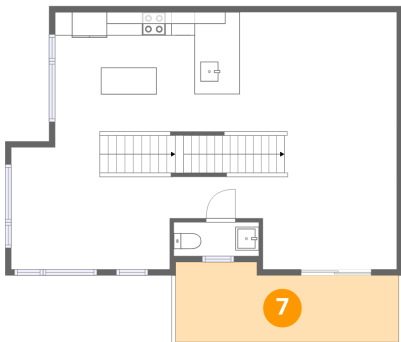
6 Floor 2 - Kitchen



Dimensions: 15'8" x 10'6"
Area: 164 sq. ft
Counted as living area: Yes

Heated: Yes
Finished: Yes
Enclosed: Yes
Contiguous: Yes
Permitted: Yes
Wet space: No
Addition: No
Conversion: No

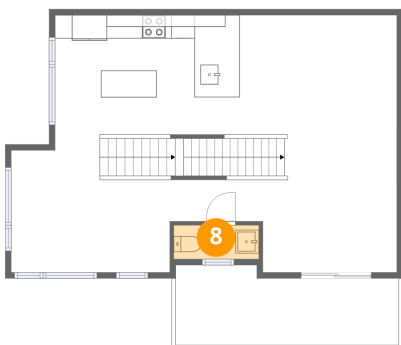
7 Floor 2 - Balcony



Dimensions: 18'11" x 6'9"
Area: 128 sq. ft
Counted as living area: No

Heated: No
Finished: No
Enclosed: No
Contiguous: Yes
Permitted: Yes
Wet space: No
Addition: No
Conversion: No

8 Floor 2 - Bath



Dimensions: 7'3" x 2'10"
Area: 21 sq. ft
Counted as living area: Yes

Heated: Yes
Finished: Yes
Enclosed: Yes
Contiguous: Yes
Permitted: Yes
Wet space: No
Addition: No
Conversion: No

829 Kiniw Private, Wateridge Village, Viscount Alexander Park,
Ottawa, Ontario, Canada, K1K 5A3

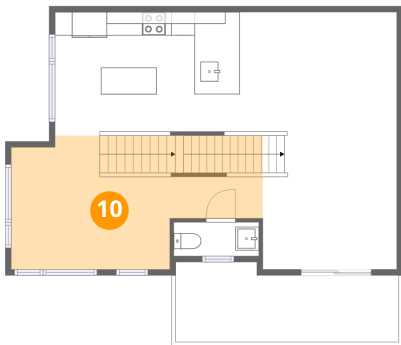
9 Floor 2 - Living Room



Dimensions: 13'4" x 21'10"
Area: 291 sq. ft
Counted as living area: Yes

Heated: Yes
Finished: Yes
Enclosed: Yes
Contiguous: Yes
Permitted: Yes
Wet space: No
Addition: No
Conversion: No

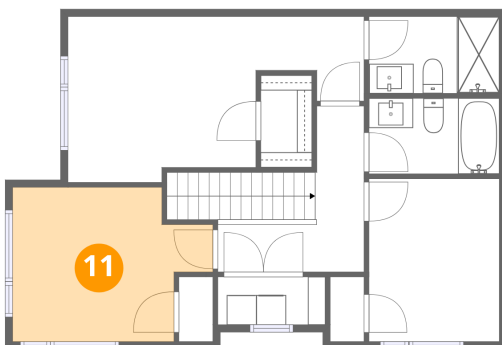
10 Floor 2 - Dining Area



Dimensions: 21'5" x 11'4"
Area: 242 sq. ft
Counted as living area: Yes

Heated: Yes
Finished: Yes
Enclosed: Yes
Contiguous: Yes
Permitted: Yes
Wet space: No
Addition: No
Conversion: No

11 Floor 3 - Bedroom

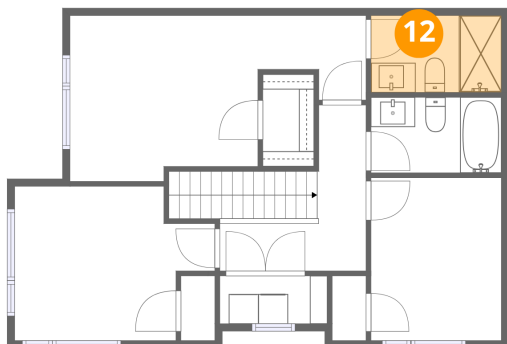


Dimensions: 13'6" x 10'4"
Area: 140 sq. ft
Counted as living area: Yes

Heated: Yes
Finished: Yes
Enclosed: Yes
Contiguous: Yes
Permitted: Yes
Wet space: No
Addition: No
Conversion: No

829 Kiniw Private, Wateridge Village, Viscount Alexander Park,
Ottawa, Ontario, Canada, K1K 5A3

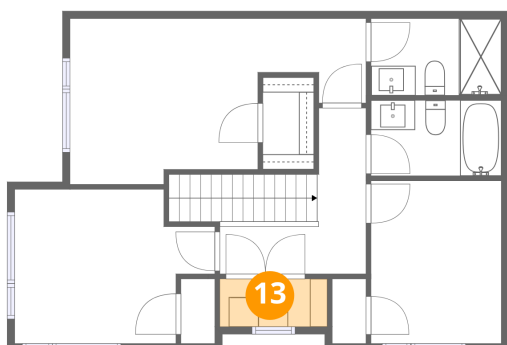
12 Floor 3 - Bath



Dimensions: 8'9" x 5'2"
Area: 45 sq. ft
Counted as living area: Yes

Heated: Yes
Finished: Yes
Enclosed: Yes
Contiguous: Yes
Permitted: Yes
Wet space: Yes
Addition: No
Conversion: No

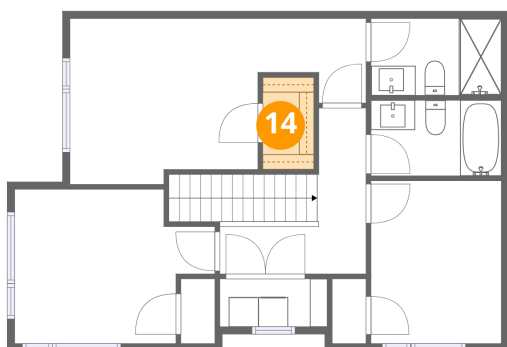
13 Floor 3 - Laundry



Dimensions: 7'2" x 3'2"
Area: 23 sq. ft
Counted as living area: Yes

Heated: Yes
Finished: Yes
Enclosed: Yes
Contiguous: Yes
Permitted: Yes
Wet space: No
Addition: No
Conversion: No

14 Floor 3 - W.I.C.



Dimensions: 3'5" x 6'2"
Area: 21 sq. ft
Counted as living area: Yes

Heated: Yes
Finished: Yes
Enclosed: Yes
Contiguous: Yes
Permitted: Yes
Wet space: No
Addition: No
Conversion: No

829 Kiniw Private, Wateridge Village, Viscount Alexander Park,
Ottawa, Ontario, Canada, K1K 5A3

15 Floor 3 - Bath



Dimensions: 8'9" x 5'1"
Area: 44 sq. ft
Counted as living area: Yes

Heated: Yes
Finished: Yes
Enclosed: Yes
Contiguous: Yes
Permitted: Yes
Wet space: Yes
Addition: No
Conversion: No

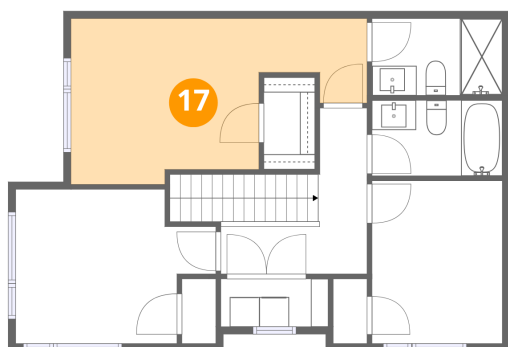
16 Floor 3 - Bedroom



Dimensions: 8'9" x 10'11"
Area: 96 sq. ft
Counted as living area: Yes

Heated: Yes
Finished: Yes
Enclosed: Yes
Contiguous: Yes
Permitted: Yes
Wet space: No
Addition: No
Conversion: No

17 Floor 3 - Primary Bedroom

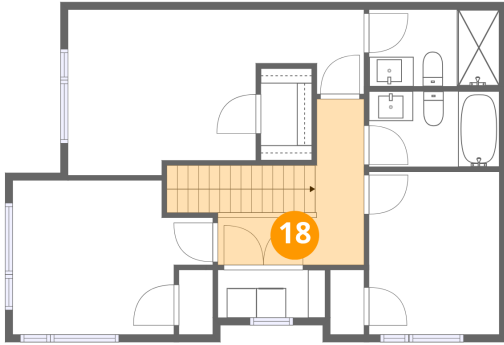


Dimensions: 19'11" x 11'2"
Area: 222 sq. ft
Counted as living area: Yes

Heated: Yes
Finished: Yes
Enclosed: Yes
Contiguous: Yes
Permitted: Yes
Wet space: No
Addition: No
Conversion: No

**829 Kiniw Private, Wateridge Village, Viscount Alexander Park,
Ottawa, Ontario, Canada, K1K 5A3**

18 Floor 3 - Hall



Dimensions: 9'10" x 11'1"
Area: 109 sq. ft
Counted as living area: Yes

Heated: Yes
Finished: Yes
Enclosed: Yes
Contiguous: Yes
Permitted: Yes
Wet space: No
Addition: No
Conversion: No