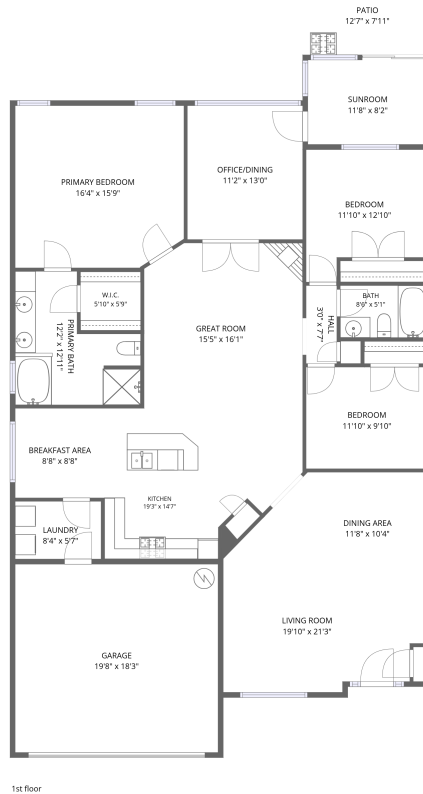


Home data report

4904 Renee Lane, Roanoke, Virginia 24018, United States



Total Area: 1956 sq. ft

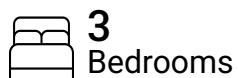
1st Floor: 1956 sq. ft

Excluded: Garage 359 sq. ft, Sunroom 95 sq. ft, Patio 100 sq. ft, Walls: 134 sq. ft

Property summary



1
Floors



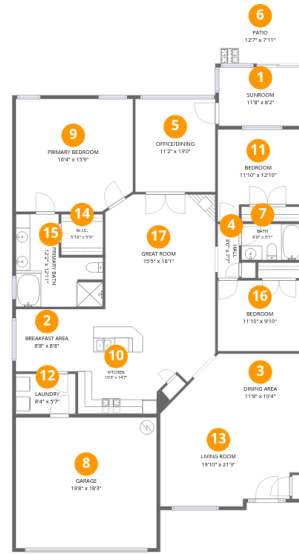
3
Bedrooms



2
Bathrooms



1
Garages



Room dimensions

Floor 1

Total:1956sqft

Excluded: 554sqft

#		Dimensions	sqft	Counted as living area
1	Sunroom	11'8" x 8'2"	95 sq. ft	No
2	Breakfast Area	8'8" x 8'8"	75 sq. ft	Yes
3	Dining Area	11'8" x 10'4"	121 sq. ft	Yes
4	Hall	3'0" x 7'7"	23 sq. ft	Yes
5	Office/Dining	11'2" x 13'0"	145 sq. ft	Yes
6	Patio	12'7" x 7'11"	100 sq. ft	No
7	Bath	8'6" x 5'1"	43 sq. ft	Yes
8	Garage	19'8" x 18'3"	359 sq. ft	No
9	Primary Bedroom	16'4" x 15'9"	251 sq. ft	Yes
10	Kitchen	19'3" x 14'7"	236 sq. ft	Yes
11	Bedroom	11'10" x 12'10"	131 sq. ft	Yes

Home data report

4904 Renee Lane, Roanoke, Virginia 24018, United States

#		Dimensions	sqft	Counted as living area
12	Laundry	8'4" x 5'7"	47 sq. ft	Yes
13	Living Room	19'10" x 21'3"	253 sq. ft	Yes
14	W.I.C.	5'10" x 5'9"	33 sq. ft	Yes
15	Primary Bath	12'2" x 12'11"	119 sq. ft	Yes
16	Bedroom	11'10" x 9'10"	116 sq. ft	Yes
17	Great Room	15'5" x 16'1"	242 sq. ft	Yes

1 Floor 1 - Sunroom



Dimensions: 11'8" x 8'2"
Area: 95 sq. ft
Counted as living area: No

Heated: No
Finished: No
Enclosed: No
Contiguous: Yes
Permitted: Yes
Wet space: No
Addition: No
Conversion: No

2 Floor 1 - Breakfast Area



Dimensions: 8'8" x 8'8"
Area: 75 sq. ft
Counted as living area: Yes

Heated: Yes
Finished: Yes
Enclosed: Yes
Contiguous: Yes
Permitted: Yes
Wet space: No
Addition: No
Conversion: No

3 Floor 1 - Dining Area



Dimensions: 11'8" x 10'4"
Area: 121 sq. ft
Counted as living area: Yes

Heated: Yes
Finished: Yes
Enclosed: Yes
Contiguous: Yes
Permitted: Yes
Wet space: No
Addition: No
Conversion: No

4 Floor 1 - Hall



Dimensions: 3'0" x 7'7"
Area: 23 sq. ft
Counted as living area: Yes

Heated: Yes
Finished: Yes
Enclosed: Yes
Contiguous: Yes
Permitted: Yes
Wet space: No
Addition: No
Conversion: No

5 Floor 1 - Office/Dining



Dimensions: 11'2" x 13'0"
Area: 145 sq. ft
Counted as living area: Yes

Heated: Yes
Finished: Yes
Enclosed: Yes
Contiguous: Yes
Permitted: Yes
Wet space: No
Addition: No
Conversion: No

6 Floor 1 - Patio



Dimensions: 12'7" x 7'11"
Area: 100 sq. ft
Counted as living area: No

Heated: No
Finished: No
Enclosed: No
Contiguous: Yes
Permitted: Yes
Wet space: No
Addition: No
Conversion: No

7 Floor 1 - Bath



Dimensions: 8'6" x 5'1"
Area: 43 sq. ft
Counted as living area: Yes

Heated: Yes
Finished: Yes
Enclosed: Yes
Contiguous: Yes
Permitted: Yes
Wet space: Yes
Addition: No
Conversion: No

8 Floor 1 - Garage



Dimensions: 19'8" x 18'3"
Area: 359 sq. ft
Counted as living area: No

Heated: No
Finished: No
Enclosed: Yes
Contiguous: Yes
Permitted: Yes
Wet space: No
Addition: No
Conversion: No

9 Floor 1 - Primary Bedroom



Dimensions: 16'4" x 15'9"
Area: 251 sq. ft
Counted as living area: Yes

Heated: Yes
Finished: Yes
Enclosed: Yes
Contiguous: Yes
Permitted: Yes
Wet space: No
Addition: No
Conversion: No

10 Floor 1 - Kitchen



Dimensions: 19'3" x 14'7"
Area: 236 sq. ft
Counted as living area: Yes

Heated: Yes
Finished: Yes
Enclosed: Yes
Contiguous: Yes
Permitted: Yes
Wet space: No
Addition: No
Conversion: No

11 Floor 1 - Bedroom



Dimensions: 11'10" x 12'10"
Area: 131 sq. ft
Counted as living area: Yes

Heated: Yes
Finished: Yes
Enclosed: Yes
Contiguous: Yes
Permitted: Yes
Wet space: No
Addition: No
Conversion: No

12 Floor 1 - Laundry



Dimensions: 8'4" x 5'7"
Area: 47 sq. ft
Counted as living area: Yes

Heated: Yes
Finished: Yes
Enclosed: Yes
Contiguous: Yes
Permitted: Yes
Wet space: No
Addition: No
Conversion: No

13 Floor 1 - Living Room



Dimensions: 19'10" x 21'3"
Area: 253 sq. ft
Counted as living area: Yes

Heated: Yes
Finished: Yes
Enclosed: Yes
Contiguous: Yes
Permitted: Yes
Wet space: No
Addition: No
Conversion: No

14 Floor 1 - W.I.C.



Dimensions: 5'10" x 5'9"
Area: 33 sq. ft
Counted as living area: Yes

Heated: Yes
Finished: Yes
Enclosed: Yes
Contiguous: Yes
Permitted: Yes
Wet space: No
Addition: No
Conversion: No

15 Floor 1 - Primary Bath



Dimensions: 12'2" x 12'11"
Area: 119 sq. ft
Counted as living area: Yes

Heated: Yes
Finished: Yes
Enclosed: Yes
Contiguous: Yes
Permitted: Yes
Wet space: Yes
Addition: No
Conversion: No

16 Floor 1 - Bedroom



Dimensions: 11'10" x 9'10"
Area: 116 sq. ft
Counted as living area: Yes

Heated: Yes
Finished: Yes
Enclosed: Yes
Contiguous: Yes
Permitted: Yes
Wet space: No
Addition: No
Conversion: No

17 Floor 1 - Great Room



Dimensions: 15'5" x 16'1"
Area: 242 sq. ft
Counted as living area: Yes

Heated: Yes
Finished: Yes
Enclosed: Yes
Contiguous: Yes
Permitted: Yes
Wet space: No
Addition: No
Conversion: No