


Home data report

**3646 Timber Lane, Hermitage, Mercer County, Pennsylvania,
United States, 16148**

 **2**
Half baths

 **2**
Garages

Home data report

3646 Timber Lane, Hermitage, Mercer County, Pennsylvania, United States, 16148



Room dimensions

Floor 1 Below grade

Total:1346sqft

Excluded: 257sqft

| # | | Dimensions | sqft | Counted as living area |
|---|-----------------|----------------|------------|------------------------|
| 1 | Billiard Room | 14'11" x 26'8" | 391 sq. ft | Yes |
| 2 | Wine Cellar | 10'6" x 7'10" | 82 sq. ft | Yes |
| 3 | Utility | 5'1" x 7'8" | 39 sq. ft | No |
| 4 | Utility | 6'0" x 24'6" | 132 sq. ft | No |
| 5 | Exercise Room | 18'11" x 11'9" | 178 sq. ft | Yes |
| 6 | Utility | 8'2" x 10'7" | 69 sq. ft | No |
| 7 | Wet Bar | 7'2" x 6'5" | 46 sq. ft | Yes |
| 8 | Recreation Room | 29'3" x 29'3" | 526 sq. ft | Yes |
| 9 | Bath | 6'6" x 6'5" | 42 sq. ft | Yes |

Home data report

3646 Timber Lane, Hermitage, Mercer County, Pennsylvania, United States, 16148



Room dimensions

Floor 2

Total:1761sqft

Excluded: 1183sqft

| # | | Dimensions | sqft | Counted as living area |
|----|--------------|----------------|------------|------------------------|
| 10 | Foyer | 12'11" x 13'8" | 144 sq. ft | Yes |
| 11 | Sitting Room | 13'9" x 11'6" | 148 sq. ft | Yes |
| 12 | Kitchen | 17'9" x 18'3" | 274 sq. ft | Yes |
| 13 | Garage | 22'6" x 24'5" | 523 sq. ft | No |
| 14 | Bar | 4'5" x 6'6" | 29 sq. ft | Yes |
| 15 | Living Room | 19'7" x 13'7" | 266 sq. ft | Yes |
| 16 | Dining Area | 13'6" x 11'7" | 154 sq. ft | Yes |
| 17 | Bath | 4'7" x 7'0" | 32 sq. ft | Yes |
| 18 | Room | 14'6" x 13'1" | 189 sq. ft | Yes |
| 19 | Deck | 23'7" x 17'4" | 409 sq. ft | No |
| 20 | Garage | 18'9" x 13'4" | 251 sq. ft | No |

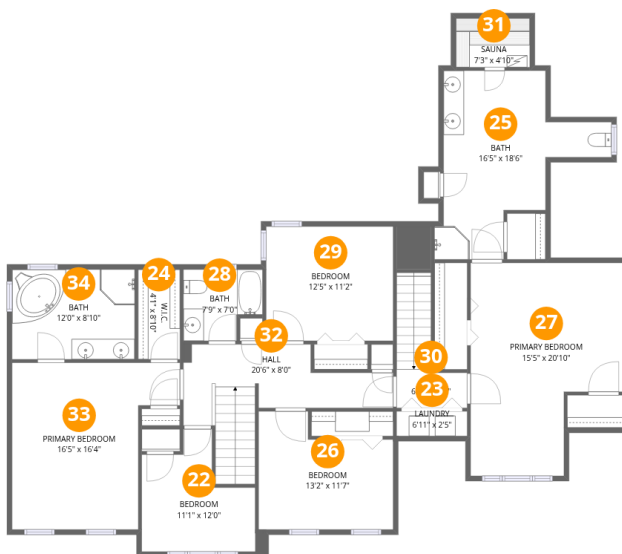
Home data report

**3646 Timber Lane, Hermitage, Mercer County, Pennsylvania,
United States, 16148**

| # | | Dimensions | sqft | Counted as living area |
|----|-------------|---------------|------------|------------------------|
| 21 | Family Room | 20'7" x 28'6" | 477 sq. ft | Yes |

Home data report

3646 Timber Lane, Hermitage, Mercer County, Pennsylvania, United States, 16148



Room dimensions

Floor 3

Total:1720sqft Excluded: 0sqft

| # | | Dimensions | sqft | Counted as living area |
|----|-----------------|----------------|------------|------------------------|
| 22 | Bedroom | 11'1" x 12'0" | 100 sq. ft | Yes |
| 23 | Laundry | 6'11" x 2'5" | 17 sq. ft | Yes |
| 24 | W.I.C. | 4'1" x 8'10" | 36 sq. ft | Yes |
| 25 | Bath | 16'5" x 18'6" | 190 sq. ft | Yes |
| 26 | Bedroom | 13'2" x 11'7" | 130 sq. ft | Yes |
| 27 | Primary Bedroom | 15'5" x 20'10" | 270 sq. ft | Yes |
| 28 | Bath | 7'9" x 7'0" | 48 sq. ft | Yes |
| 29 | Bedroom | 12'5" x 11'2" | 139 sq. ft | Yes |
| 30 | Hall | 6'11" x 3'9" | 57 sq. ft | Yes |
| 31 | Sauna | 7'3" x 4'10" | 35 sq. ft | Yes |
| 32 | Hall | 20'6" x 8'0" | 139 sq. ft | Yes |

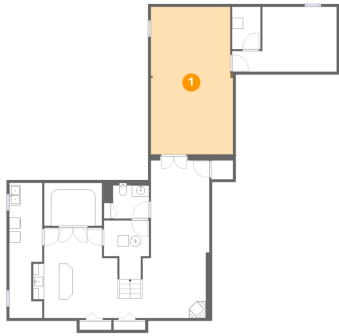
Home data report

**3646 Timber Lane, Hermitage, Mercer County, Pennsylvania,
United States, 16148**

| # | | Dimensions | sqft | Counted as living area |
|----|-----------------|---------------|------------|------------------------|
| 33 | Primary Bedroom | 16'5" x 16'4" | 219 sq. ft | Yes |
| 34 | Bath | 12'0" x 8'10" | 106 sq. ft | Yes |

3646 Timber Lane, Hermitage, Mercer County, Pennsylvania,
United States, 16148

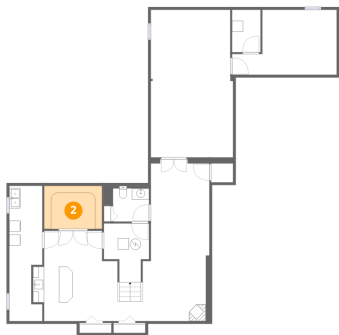
1 Floor 1 - Billiard Room



Dimensions: 14'11" x 26'8"
Area: 391 sq. ft
Counted as living area: Yes

Heated: Yes
Finished: Yes
Enclosed: Yes
Contiguous: Yes
Permitted: Yes
Wet space: No
Addition: No
Conversion: No

2 Floor 1 - Wine Cellar



Dimensions: 10'6" x 7'10"
Area: 82 sq. ft
Counted as living area: No

Heated: No
Finished: Yes
Enclosed: Yes
Contiguous: Yes
Permitted: Yes
Wet space: No
Addition: No
Conversion: No

3646 Timber Lane, Hermitage, Mercer County, Pennsylvania,
United States, 16148

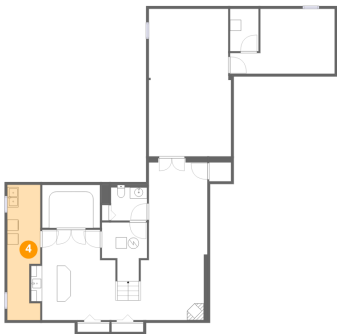
3 Floor 1 - Utility



Dimensions: 5'1" x 7'8"
Area: 39 sq. ft
Counted as living area: No

Heated: Yes
Finished: No
Enclosed: Yes
Contiguous: Yes
Permitted: Yes
Wet space: No
Addition: No
Conversion: No

4 Floor 1 - Utility



Dimensions: 6'0" x 24'6"
Area: 132 sq. ft
Counted as living area: No

Heated: Yes
Finished: No
Enclosed: Yes
Contiguous: Yes
Permitted: Yes
Wet space: No
Addition: No
Conversion: No

5 Floor 1 - Exercise Room



Dimensions: 18'11" x 11'9"
Area: 178 sq. ft
Counted as living area: Yes

Heated: Yes
Finished: Yes
Enclosed: Yes
Contiguous: Yes
Permitted: Yes
Wet space: No
Addition: No
Conversion: No

6 Floor 1 - Utility



Dimensions: 8'2" x 10'7"
Area: 69 sq. ft
Counted as living area: No

Heated: Yes
Finished: No
Enclosed: Yes
Contiguous: Yes
Permitted: Yes
Wet space: No
Addition: No
Conversion: No

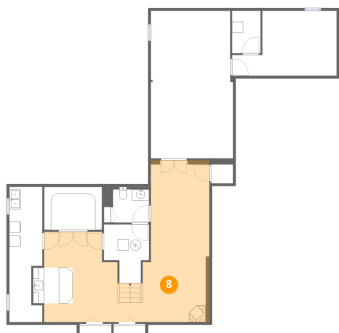
7 Floor 1 - Wet Bar



Dimensions: 7'2" x 6'5"
Area: 46 sq. ft
Counted as living area: Yes

Heated: Yes
Finished: Yes
Enclosed: Yes
Contiguous: Yes
Permitted: Yes
Wet space: No
Addition: No
Conversion: No

8 Floor 1 - Recreation Room

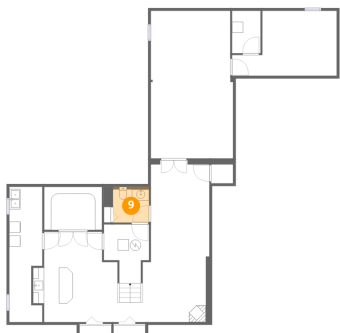


Dimensions: 29'3" x 29'3"
Area: 526 sq. ft
Counted as living area: Yes

Heated: Yes
Finished: Yes
Enclosed: Yes
Contiguous: Yes
Permitted: Yes
Wet space: No
Addition: No
Conversion: No

3646 Timber Lane, Hermitage, Mercer County, Pennsylvania,
United States, 16148

9 Floor 1 - Bath



Dimensions: 6'6" x 6'5"
Area: 42 sq. ft
Counted as living area: Yes

Heated: Yes
Finished: Yes
Enclosed: Yes
Contiguous: Yes
Permitted: Yes
Wet space: Yes
Addition: No
Conversion: No

10 Floor 2 - Foyer



Dimensions: 12'11" x 13'8"
Area: 144 sq. ft
Counted as living area: Yes

Heated: Yes
Finished: Yes
Enclosed: Yes
Contiguous: Yes
Permitted: Yes
Wet space: No
Addition: No
Conversion: No

11 Floor 2 - Sitting Room



Dimensions: 13'9" x 11'6"
Area: 148 sq. ft
Counted as living area: Yes

Heated: Yes
Finished: Yes
Enclosed: Yes
Contiguous: Yes
Permitted: Yes
Wet space: No
Addition: No
Conversion: No

3646 Timber Lane, Hermitage, Mercer County, Pennsylvania,
United States, 16148

12 Floor 2 - Kitchen



Dimensions: 17'9" x 18'3"
Area: 274 sq. ft
Counted as living area: Yes

Heated: Yes
Finished: Yes
Enclosed: Yes
Contiguous: Yes
Permitted: Yes
Wet space: No
Addition: No
Conversion: No

13 Floor 2 - Garage



Dimensions: 22'6" x 24'5"
Area: 523 sq. ft
Counted as living area: No

Heated: No
Finished: No
Enclosed: Yes
Contiguous: Yes
Permitted: Yes
Wet space: No
Addition: No
Conversion: No

14 Floor 2 - Bar



Dimensions: 4'5" x 6'6"
Area: 29 sq. ft
Counted as living area: Yes

Heated: Yes
Finished: Yes
Enclosed: Yes
Contiguous: Yes
Permitted: Yes
Wet space: No
Addition: No
Conversion: No

3646 Timber Lane, Hermitage, Mercer County, Pennsylvania,
United States, 16148

15 Floor 2 - Living Room



Dimensions: 19'7" x 13'7"
Area: 266 sq. ft
Counted as living area: Yes

Heated: Yes
Finished: Yes
Enclosed: Yes
Contiguous: Yes
Permitted: Yes
Wet space: No
Addition: No
Conversion: No

16 Floor 2 - Dining Area



Dimensions: 13'6" x 11'7"
Area: 154 sq. ft
Counted as living area: Yes

Heated: Yes
Finished: Yes
Enclosed: Yes
Contiguous: Yes
Permitted: Yes
Wet space: No
Addition: No
Conversion: No

17 Floor 2 - Bath



Dimensions: 4'7" x 7'0"
Area: 32 sq. ft
Counted as living area: Yes

Heated: Yes
Finished: Yes
Enclosed: Yes
Contiguous: Yes
Permitted: Yes
Wet space: Yes
Addition: No
Conversion: No

3646 Timber Lane, Hermitage, Mercer County, Pennsylvania,
United States, 16148

18 Floor 2 - Room



Dimensions: 14'6" x 13'1"
Area: 189 sq. ft
Counted as living area: Yes

Heated: Yes
Finished: Yes
Enclosed: Yes
Contiguous: Yes
Permitted: Yes
Wet space: No
Addition: No
Conversion: No

19 Floor 2 - Deck



Dimensions: 23'7" x 17'4"
Area: 409 sq. ft
Counted as living area: No

Heated: No
Finished: No
Enclosed: No
Contiguous: Yes
Permitted: Yes
Wet space: No
Addition: No
Conversion: No

20 Floor 2 - Garage



Dimensions: 18'9" x 13'4"
Area: 251 sq. ft
Counted as living area: No

Heated: No
Finished: No
Enclosed: Yes
Contiguous: Yes
Permitted: Yes
Wet space: No
Addition: No
Conversion: No

3646 Timber Lane, Hermitage, Mercer County, Pennsylvania,
United States, 16148

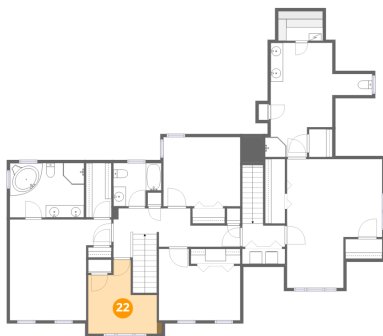
21 Floor 2 - Family Room



Dimensions: 20'7" x 28'6"
Area: 477 sq. ft
Counted as living area: Yes

Heated: Yes
Finished: Yes
Enclosed: Yes
Contiguous: Yes
Permitted: Yes
Wet space: No
Addition: No
Conversion: No

22 Floor 3 - Bedroom



Dimensions: 11'1" x 12'0"
Area: 100 sq. ft
Counted as living area: Yes

Heated: Yes
Finished: Yes
Enclosed: Yes
Contiguous: Yes
Permitted: Yes
Wet space: No
Addition: No
Conversion: No

23 Floor 3 - Laundry

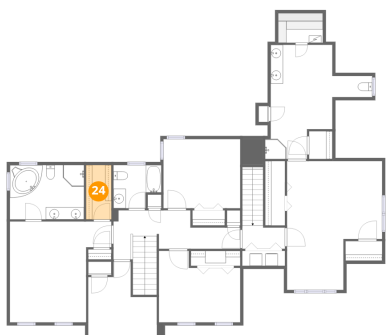


Dimensions: 6'11" x 2'5"
Area: 17 sq. ft
Counted as living area: Yes

Heated: Yes
Finished: Yes
Enclosed: Yes
Contiguous: Yes
Permitted: Yes
Wet space: No
Addition: No
Conversion: No

3646 Timber Lane, Hermitage, Mercer County, Pennsylvania,
United States, 16148

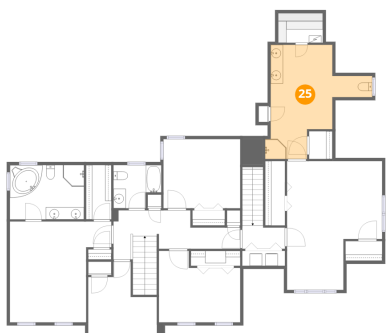
24 Floor 3 - W.I.C.



Dimensions: 4'1" x 8'10"
Area: 36 sq. ft
Counted as living area: Yes

Heated: Yes
Finished: Yes
Enclosed: Yes
Contiguous: Yes
Permitted: Yes
Wet space: No
Addition: No
Conversion: No

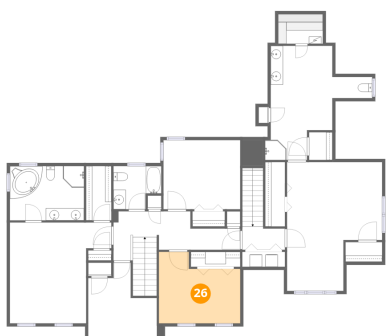
25 Floor 3 - Bath



Dimensions: 16'5" x 18'6"
Area: 190 sq. ft
Counted as living area: Yes

Heated: Yes
Finished: Yes
Enclosed: Yes
Contiguous: Yes
Permitted: Yes
Wet space: Yes
Addition: No
Conversion: No

26 Floor 3 - Bedroom

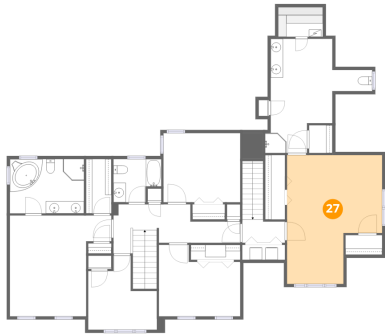


Dimensions: 13'2" x 11'7"
Area: 130 sq. ft
Counted as living area: Yes

Heated: Yes
Finished: Yes
Enclosed: Yes
Contiguous: Yes
Permitted: Yes
Wet space: No
Addition: No
Conversion: No

3646 Timber Lane, Hermitage, Mercer County, Pennsylvania,
United States, 16148

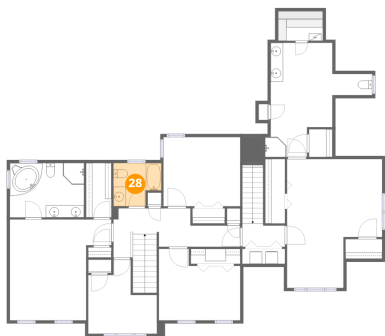
27 Floor 3 - Primary Bedroom



Dimensions: 15'5" x 20'10"
Area: 270 sq. ft
Counted as living area: Yes

Heated: Yes
Finished: Yes
Enclosed: Yes
Contiguous: Yes
Permitted: Yes
Wet space: No
Addition: No
Conversion: No

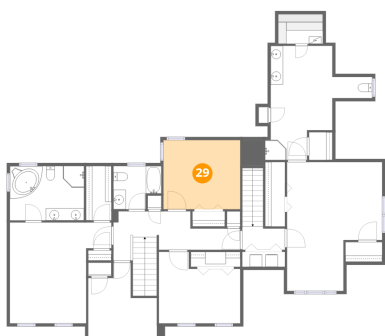
28 Floor 3 - Bath



Dimensions: 7'9" x 7'0"
Area: 48 sq. ft
Counted as living area: Yes

Heated: Yes
Finished: Yes
Enclosed: Yes
Contiguous: Yes
Permitted: Yes
Wet space: Yes
Addition: No
Conversion: No

29 Floor 3 - Bedroom

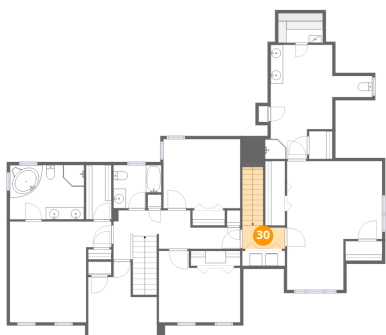


Dimensions: 12'5" x 11'2"
Area: 139 sq. ft
Counted as living area: Yes

Heated: Yes
Finished: Yes
Enclosed: Yes
Contiguous: Yes
Permitted: Yes
Wet space: No
Addition: No
Conversion: No

3646 Timber Lane, Hermitage, Mercer County, Pennsylvania,
United States, 16148

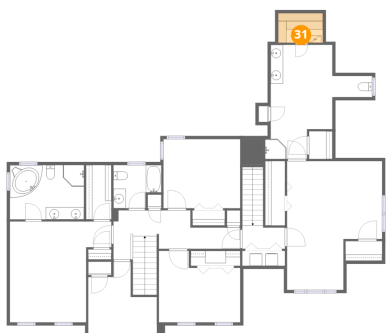
30 Floor 3 - Hall



Dimensions: 6'11" x 3'9"
Area: 57 sq. ft
Counted as living area: Yes

Heated: Yes
Finished: Yes
Enclosed: Yes
Contiguous: Yes
Permitted: Yes
Wet space: No
Addition: No
Conversion: No

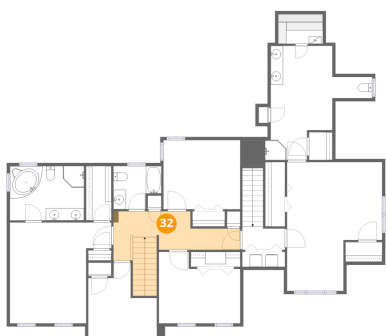
31 Floor 3 - Sauna



Dimensions: 7'3" x 4'10"
Area: 35 sq. ft
Counted as living area: Yes

Heated: Yes
Finished: Yes
Enclosed: Yes
Contiguous: Yes
Permitted: Yes
Wet space: No
Addition: No
Conversion: No

32 Floor 3 - Hall

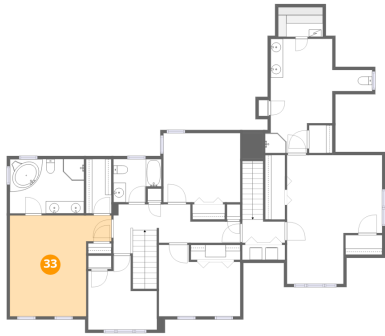


Dimensions: 20'6" x 8'0"
Area: 139 sq. ft
Counted as living area: Yes

Heated: Yes
Finished: Yes
Enclosed: Yes
Contiguous: Yes
Permitted: Yes
Wet space: No
Addition: No
Conversion: No

3646 Timber Lane, Hermitage, Mercer County, Pennsylvania,
United States, 16148

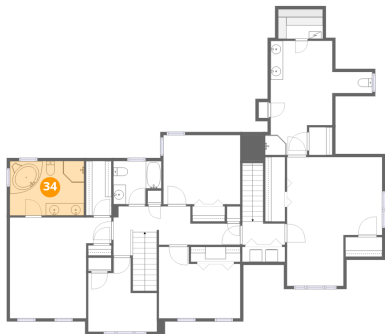
33 Floor 3 - Primary Bedroom



Dimensions: 16'5" x 16'4"
Area: 219 sq. ft
Counted as living area: Yes

Heated: Yes
Finished: Yes
Enclosed: Yes
Contiguous: Yes
Permitted: Yes
Wet space: No
Addition: No
Conversion: No

34 Floor 3 - Bath



Dimensions: 12'0" x 8'10"
Area: 106 sq. ft
Counted as living area: Yes

Heated: Yes
Finished: Yes
Enclosed: Yes
Contiguous: Yes
Permitted: Yes
Wet space: Yes
Addition: No
Conversion: No