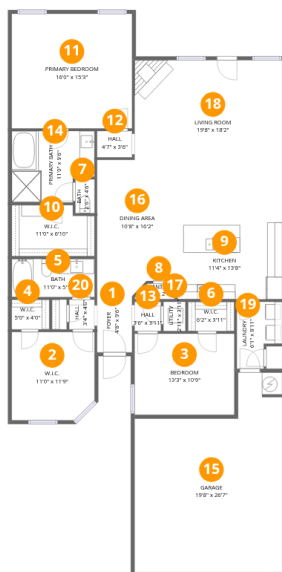


411 Ripple Lk Dr SW, Huntsville, AL, US



Room dimensions

Floor 1

Total: 1716 sqft Excluded: 436 sqft

#		Dimensions	sqft	Counted as living area
1	Foyer	4'8" x 9'6"	44 sq. ft	Yes
2	W.I.C.	11'0" x 11'9"	129 sq. ft	Yes
3	Bedroom	13'3" x 10'9"	143 sq. ft	Yes
4	W.I.C.	5'0" x 4'0"	20 sq. ft	Yes
5	Bath	11'0" x 5'1"	56 sq. ft	Yes
6	W.I.C.	6'2" x 3'11"	24 sq. ft	Yes
7	Bath	2'6" x 4'6"	11 sq. ft	Yes
8	Pantry	5'4" x 2'1"	11 sq. ft	Yes
9	Kitchen	11'4" x 13'8"	155 sq. ft	Yes
10	W.I.C.	11'0" x 6'10"	75 sq. ft	Yes
11	Primary Bedroom	16'0" x 15'3"	244 sq. ft	Yes

Home data report

411 Ripple Lk Dr SW,Huntsville,AL,US

#		Dimensions	sqft	Counted as living area
12	Hall	4'7" x 3'6"	16 sq. ft	Yes
13	Hall	3'6" x 3'11"	14 sq. ft	Yes
14	Primary Bath	11'0" x 9'6"	105 sq. ft	Yes
15	Garage	19'8" x 26'7"	522 sq. ft	No
16	Dining Area	10'8" x 16'2"	172 sq. ft	Yes
17	Utility	2'11" x 3'11"	11 sq. ft	Yes
18	Living Room	19'8" x 18'2"	356 sq. ft	Yes
19	Laundry	6'1" x 8'11"	54 sq. ft	Yes
20	Hall	3'4" x 4'0"	13 sq. ft	Yes

1 Floor 1 - Foyer



Dimensions: 4'8" x 9'6"
Area: 44 sq. ft
Counted as living area: Yes

Heated: Yes
Finished: Yes
Enclosed: Yes
Contiguous: Yes
Permitted: Yes
Wet space: No
Addition: No
Conversion: No

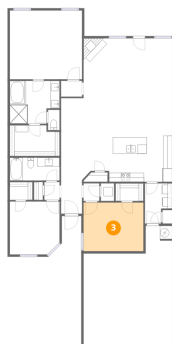
2 Floor 1 - W.I.C.



Dimensions: 11'0" x 11'9"
Area: 129 sq. ft
Counted as living area: Yes

Heated: Yes
Finished: Yes
Enclosed: Yes
Contiguous: Yes
Permitted: Yes
Wet space: No
Addition: No
Conversion: No

3 Floor 1 - Bedroom



Dimensions: 13'3" x 10'9"
Area: 143 sq. ft
Counted as living area: Yes

Heated: Yes
Finished: Yes
Enclosed: Yes
Contiguous: Yes
Permitted: Yes
Wet space: No
Addition: No
Conversion: No

4 Floor 1 - W.I.C.



Dimensions: 5'0" x 4'0"
Area: 20 sq. ft
Counted as living area: Yes

Heated: Yes
Finished: Yes
Enclosed: Yes
Contiguous: Yes
Permitted: Yes
Wet space: No
Addition: No
Conversion: No

5 Floor 1 - Bath



Dimensions: 11'0" x 5'1"
Area: 56 sq. ft
Counted as living area: Yes

Heated: Yes
Finished: Yes
Enclosed: Yes
Contiguous: Yes
Permitted: Yes
Wet space: Yes
Addition: No
Conversion: No

6 Floor 1 - W.I.C.



Dimensions: 6'2" x 3'11"
Area: 24 sq. ft
Counted as living area: Yes

Heated: Yes
Finished: Yes
Enclosed: Yes
Contiguous: Yes
Permitted: Yes
Wet space: No
Addition: No
Conversion: No

7 Floor 1 - Bath



Dimensions: 2'6" x 4'6"
Area: 11 sq. ft
Counted as living area: Yes

Heated: Yes
Finished: Yes
Enclosed: Yes
Contiguous: Yes
Permitted: Yes
Wet space: Yes
Addition: No
Conversion: No

8 Floor 1 - Pantry



Dimensions: 5'4" x 2'1"
Area: 11 sq. ft
Counted as living area: Yes

Heated: Yes
Finished: Yes
Enclosed: Yes
Contiguous: Yes
Permitted: Yes
Wet space: No
Addition: No
Conversion: No

9 Floor 1 - Kitchen



Dimensions: 11'4" x 13'8"
Area: 155 sq. ft
Counted as living area: Yes

Heated: Yes
Finished: Yes
Enclosed: Yes
Contiguous: Yes
Permitted: Yes
Wet space: No
Addition: No
Conversion: No

10 Floor 1 - W.I.C.



Dimensions: 11'0" x 6'10"
Area: 75 sq. ft
Counted as living area: Yes

Heated: Yes
Finished: Yes
Enclosed: Yes
Contiguous: Yes
Permitted: Yes
Wet space: No
Addition: No
Conversion: No

11 Floor 1 - Primary Bedroom



Dimensions: 16'0" x 15'3"
Area: 244 sq. ft
Counted as living area: Yes

Heated: Yes
Finished: Yes
Enclosed: Yes
Contiguous: Yes
Permitted: Yes
Wet space: No
Addition: No
Conversion: No

12 Floor 1 - Hall



Dimensions: 4'7" x 3'6"
Area: 16 sq. ft
Counted as living area: Yes

Heated: Yes
Finished: Yes
Enclosed: Yes
Contiguous: Yes
Permitted: Yes
Wet space: No
Addition: No
Conversion: No

13 Floor 1 - Hall



Dimensions: 3'6" x 3'11"
Area: 14 sq. ft
Counted as living area: Yes

Heated: Yes
Finished: Yes
Enclosed: Yes
Contiguous: Yes
Permitted: Yes
Wet space: No
Addition: No
Conversion: No

14 Floor 1 - Primary Bath



Dimensions: 11'0" x 9'6"
Area: 105 sq. ft
Counted as living area: Yes

Heated: Yes
Finished: Yes
Enclosed: Yes
Contiguous: Yes
Permitted: Yes
Wet space: Yes
Addition: No
Conversion: No

15 Floor 1 - Garage



Dimensions: 19'8" x 26'7"
Area: 522 sq. ft
Counted as living area: No

Heated: No
Finished: No
Enclosed: Yes
Contiguous: Yes
Permitted: Yes
Wet space: No
Addition: No
Conversion: No

16 Floor 1 - Dining Area



Dimensions: 10'8" x 16'2"
Area: 172 sq. ft
Counted as living area: Yes

Heated: Yes
Finished: Yes
Enclosed: Yes
Contiguous: Yes
Permitted: Yes
Wet space: No
Addition: No
Conversion: No

17 Floor 1 - Utility



Dimensions: 2'11" x 3'11"
Area: 11 sq. ft
Counted as living area: Yes

Heated: Yes
Finished: Yes
Enclosed: Yes
Contiguous: Yes
Permitted: Yes
Wet space: No
Addition: No
Conversion: No

18 Floor 1 - Living Room



Dimensions: 19'8" x 18'2"
Area: 356 sq. ft
Counted as living area: Yes

Heated: Yes
Finished: Yes
Enclosed: Yes
Contiguous: Yes
Permitted: Yes
Wet space: No
Addition: No
Conversion: No

19 Floor 1 - Laundry



Dimensions: 6'1" x 8'11"
Area: 54 sq. ft
Counted as living area: Yes

Heated: Yes
Finished: Yes
Enclosed: Yes
Contiguous: Yes
Permitted: Yes
Wet space: No
Addition: No
Conversion: No

20 Floor 1 - Hall



Dimensions: 3'4" x 4'0"
Area: 13 sq. ft
Counted as living area: Yes

Heated: Yes
Finished: Yes
Enclosed: Yes
Contiguous: Yes
Permitted: Yes
Wet space: No
Addition: No
Conversion: No