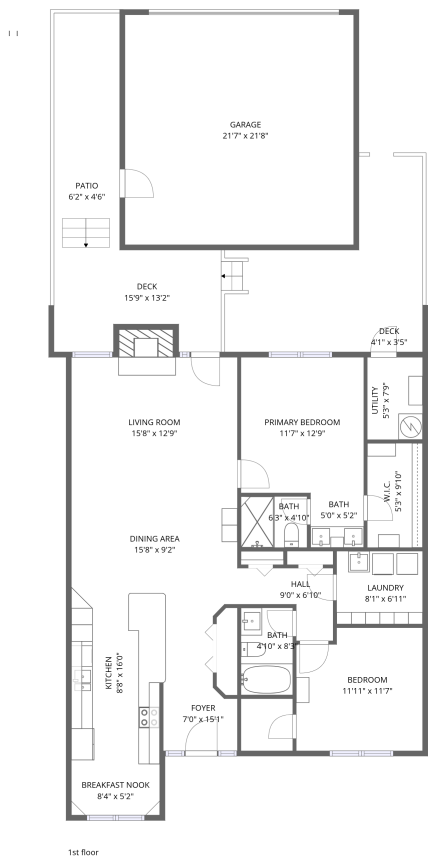


Home data report

18 Enoree View Drive, Greer, Greenville County, South Carolina,  
United States, 29650





**Total Area: 1241 sq. ft**

1st Floor: 1241 sq. ft


Excluded: Utility 40 sq. ft, Garage 467 sq. ft, Deck 174 sq. ft, Patio 28 sq. ft, Fireplace 16 sq. ft, Walls: 111 sq. ft

Property summary

 **1** Floors

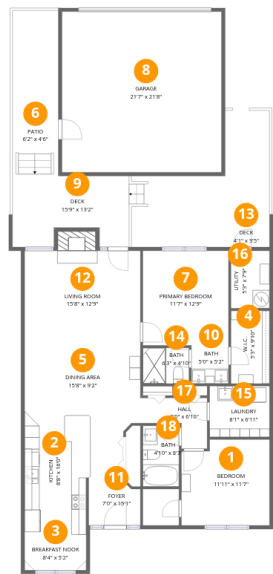
 **2** Bedrooms

 **2** Bathrooms

 **1** Garages

Home data report

18 Enoree View Drive, Greer, Greenville County, South Carolina,  
United States, 29650



Room dimensions

Floor 1 Total:1241sqft Excluded: 725sqft

#		Dimensions	sqft	Counted as living area
1	Bedroom	11'11" x 11'7"	132 sq. ft	Yes
2	Kitchen	8'8" x 16'0"	136 sq. ft	Yes
3	Breakfast Nook	8'4" x 5'2"	43 sq. ft	Yes
4	W.I.C.	5'3" x 9'10"	51 sq. ft	Yes
5	Dining Area	15'8" x 9'2"	144 sq. ft	Yes
6	Patio	6'2" x 4'6"	28 sq. ft	No
7	Primary Bedroom	11'7" x 12'9"	148 sq. ft	Yes
8	Garage	21'7" x 21'8"	467 sq. ft	No
9	Deck	15'9" x 13'2"	160 sq. ft	No
10	Bath	5'0" x 5'2"	26 sq. ft	Yes
11	Foyer	7'0" x 15'1"	86 sq. ft	Yes

## Home data report

**18 Enoree View Drive, Greer, Greenville County, South Carolina,  
United States, 29650**

#		Dimensions	sqft	Counted as living area
12	Living Room	15'8" x 12'9"	214 sq. ft	Yes
13	Deck	4'1" x 3'5"	14 sq. ft	No
14	Bath	6'3" x 4'10"	30 sq. ft	Yes
15	Laundry	8'1" x 6'11"	56 sq. ft	Yes
16	Utility	5'3" x 7'9"	40 sq. ft	No
17	Hall	9'0" x 6'10"	43 sq. ft	Yes
18	Bath	4'10" x 8'3"	40 sq. ft	Yes

1 Floor 1 - Bedroom



Dimensions: 11'11" x 11'7"  
Area: 132 sq. ft  
Counted as living area: Yes

Heated: Yes  
Finished: Yes  
Enclosed: Yes  
Contiguous: Yes  
Permitted: Yes  
Wet space: No  
Addition: No  
Conversion: No

2 Floor 1 - Kitchen



Dimensions: 8'8" x 16'0"  
Area: 136 sq. ft  
Counted as living area: Yes

Heated: Yes  
Finished: Yes  
Enclosed: Yes  
Contiguous: Yes  
Permitted: Yes  
Wet space: No  
Addition: No  
Conversion: No

3 Floor 1 - Breakfast Nook



Dimensions: 8'4" x 5'2"  
Area: 43 sq. ft  
Counted as living area: Yes

Heated: Yes  
Finished: Yes  
Enclosed: Yes  
Contiguous: Yes  
Permitted: Yes  
Wet space: No  
Addition: No  
Conversion: No

4 Floor 1 - W.I.C.



Dimensions: 5'3" x 9'10"  
Area: 51 sq. ft  
Counted as living area: Yes

Heated: Yes  
Finished: Yes  
Enclosed: Yes  
Contiguous: Yes  
Permitted: Yes  
Wet space: No  
Addition: No  
Conversion: No

5 Floor 1 - Dining Area



Dimensions: 15'8" x 9'2"  
Area: 144 sq. ft  
Counted as living area: Yes

Heated: Yes  
Finished: Yes  
Enclosed: Yes  
Contiguous: Yes  
Permitted: Yes  
Wet space: No  
Addition: No  
Conversion: No

6 Floor 1 - Patio



Dimensions: 6'2" x 4'6"  
Area: 28 sq. ft  
Counted as living area: No

Heated: No  
Finished: No  
Enclosed: No  
Contiguous: Yes  
Permitted: Yes  
Wet space: No  
Addition: No  
Conversion: No

7 Floor 1 - Primary Bedroom



Dimensions: 11'7" x 12'9"  
Area: 148 sq. ft  
Counted as living area: Yes

Heated: Yes  
Finished: Yes  
Enclosed: Yes  
Contiguous: Yes  
Permitted: Yes  
Wet space: No  
Addition: No  
Conversion: No

8 Floor 1 - Garage



Dimensions: 21'7" x 21'8"  
Area: 467 sq. ft  
Counted as living area: No

Heated: No  
Finished: No  
Enclosed: Yes  
Contiguous: Yes  
Permitted: Yes  
Wet space: No  
Addition: No  
Conversion: No

18 Enoree View Drive, Greer, Greenville County, South Carolina,  
United States, 29650

## 9 Floor 1 - Deck



Dimensions: 15'9" x 13'2"  
Area: 160 sq. ft  
Counted as living area: No

Heated: No  
Finished: No  
Enclosed: No  
Contiguous: Yes  
Permitted: Yes  
Wet space: No  
Addition: No  
Conversion: No

## 10 Floor 1 - Bath



Dimensions: 5'0" x 5'2"  
Area: 26 sq. ft  
Counted as living area: Yes

Heated: Yes  
Finished: Yes  
Enclosed: Yes  
Contiguous: Yes  
Permitted: Yes  
Wet space: Yes  
Addition: No  
Conversion: No

## 11 Floor 1 - Foyer



Dimensions: 7'0" x 15'1"  
Area: 86 sq. ft  
Counted as living area: Yes

Heated: Yes  
Finished: Yes  
Enclosed: Yes  
Contiguous: Yes  
Permitted: Yes  
Wet space: No  
Addition: No  
Conversion: No

12 Floor 1 - Living Room



Dimensions: 15'8" x 12'9"  
Area: 214 sq. ft  
Counted as living area: Yes

Heated: Yes  
Finished: Yes  
Enclosed: Yes  
Contiguous: Yes  
Permitted: Yes  
Wet space: No  
Addition: No  
Conversion: No

13 Floor 1 - Deck



Dimensions: 4'1" x 3'5"  
Area: 14 sq. ft  
Counted as living area: No

Heated: No  
Finished: No  
Enclosed: No  
Contiguous: Yes  
Permitted: Yes  
Wet space: No  
Addition: No  
Conversion: No

14 Floor 1 - Bath



Dimensions: 6'3" x 4'10"  
Area: 30 sq. ft  
Counted as living area: Yes

Heated: Yes  
Finished: Yes  
Enclosed: Yes  
Contiguous: Yes  
Permitted: Yes  
Wet space: Yes  
Addition: No  
Conversion: No



15 Floor 1 - Laundry



Dimensions: 8'1" x 6'11"  
Area: 56 sq. ft  
Counted as living area: Yes

Heated: Yes  
Finished: Yes  
Enclosed: Yes  
Contiguous: Yes  
Permitted: Yes  
Wet space: No  
Addition: No  
Conversion: No

16 Floor 1 - Utility



Dimensions: 5'3" x 7'9"  
Area: 40 sq. ft  
Counted as living area: No

Heated: Yes  
Finished: No  
Enclosed: Yes  
Contiguous: Yes  
Permitted: Yes  
Wet space: No  
Addition: No  
Conversion: No

17 Floor 1 - Hall



Dimensions: 9'0" x 6'10"  
Area: 43 sq. ft  
Counted as living area: Yes

Heated: Yes  
Finished: Yes  
Enclosed: Yes  
Contiguous: Yes  
Permitted: Yes  
Wet space: No  
Addition: No  
Conversion: No

18 Enoree View Drive, Greer, Greenville County, South Carolina,  
United States, 29650

**18** Floor 1 - Bath



Dimensions: 4'10" x 8'3"  
Area: 40 sq. ft  
Counted as living area: Yes

Heated: Yes  
Finished: Yes  
Enclosed: Yes  
Contiguous: Yes  
Permitted: Yes  
Wet space: Yes  
Addition: No  
Conversion: No