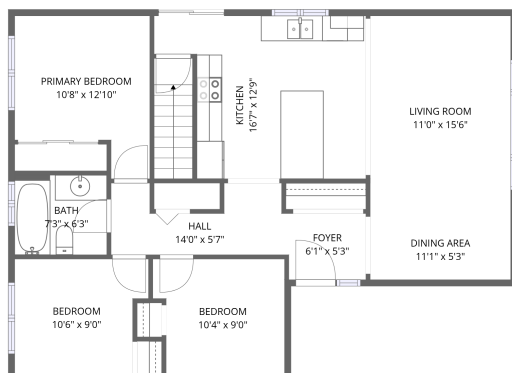
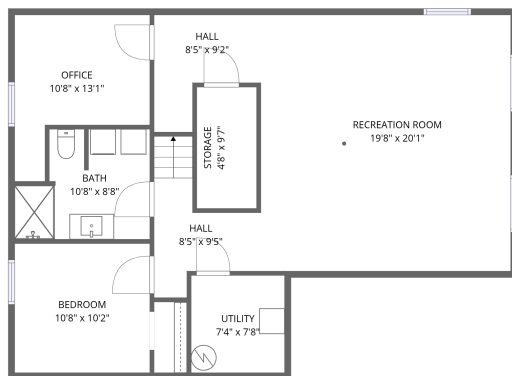


Home data report

19 Spring Garden Avenue, Cityview - Crestview - Meadowlands, Crestview, Nepean, Ontario, Canada, K2G 3B1



1st floor



Basement

Total Area: 1820 sq. ft

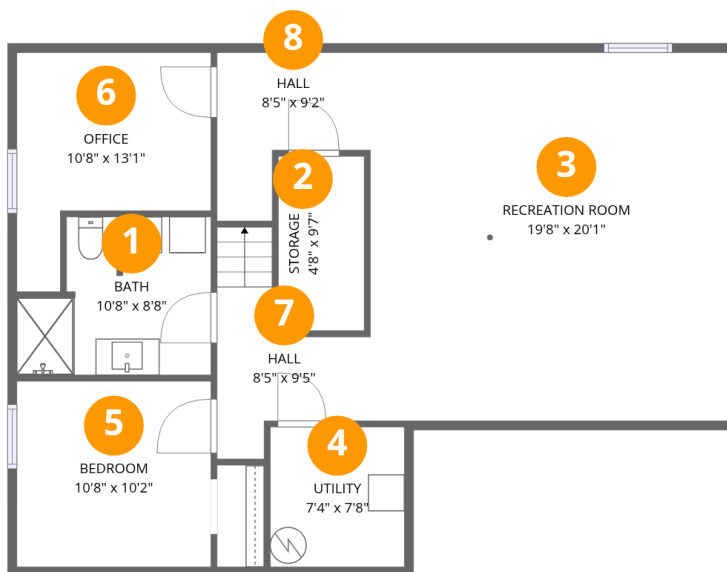
Basement: 854 sq. ft, 1st Floor: 966 sq. ft

Excluded: Utility 56 sq. ft, Storage 45 sq. ft, Walls: 137 sq. ft

Property summary



**19 Spring Garden Avenue, Cityview - Crestview - Meadowlands,
Crestview, Nepean, Ontario, Canada, K2G 3B1**



Room dimensions

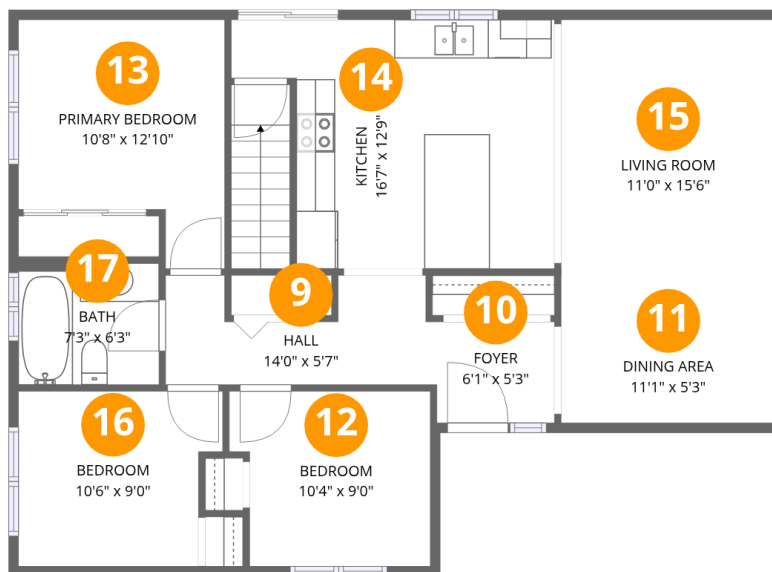
Floor 1 Below grade

Total:854sqft

Excluded: 101sqft

#		Dimensions	sqft	Counted as living area
1	Bath	10'8" x 8'8"	79 sq. ft	Yes
2	Storage	4'8" x 9'7"	45 sq. ft	No
3	Recreation Room	19'8" x 20'1"	396 sq. ft	Yes
4	Utility	7'4" x 7'8"	56 sq. ft	No
5	Bedroom	10'8" x 10'2"	108 sq. ft	Yes
6	Office	10'8" x 13'1"	103 sq. ft	Yes
7	Hall	8'5" x 9'5"	62 sq. ft	Yes
8	Hall	8'5" x 9'2"	57 sq. ft	Yes

**19 Spring Garden Avenue, Cityview - Crestview - Meadowlands,
Crestview, Nepean, Ontario, Canada, K2G 3B1**



Room dimensions

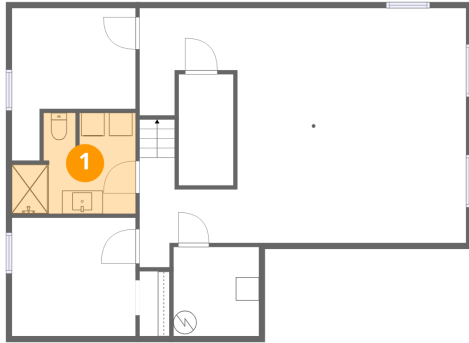
Floor 2

Total:966sqft Excluded: 0sqft

#		Dimensions	sqft	Counted as living area
9	Hall	14'0" x 5'7"	63 sq. ft	Yes
10	Foyer	6'1" x 5'3"	32 sq. ft	Yes
11	Dining Area	11'1" x 5'3"	58 sq. ft	Yes
12	Bedroom	10'4" x 9'0"	87 sq. ft	Yes
13	Primary Bedroom	10'8" x 12'10"	113 sq. ft	Yes
14	Kitchen	16'7" x 12'9"	210 sq. ft	Yes
15	Living Room	11'0" x 15'6"	172 sq. ft	Yes
16	Bedroom	10'6" x 9'0"	87 sq. ft	Yes
17	Bath	7'3" x 6'3"	45 sq. ft	Yes

19 Spring Garden Avenue, Cityview - Crestview - Meadowlands, Crestview, Nepean, Ontario, Canada, K2G 3B1

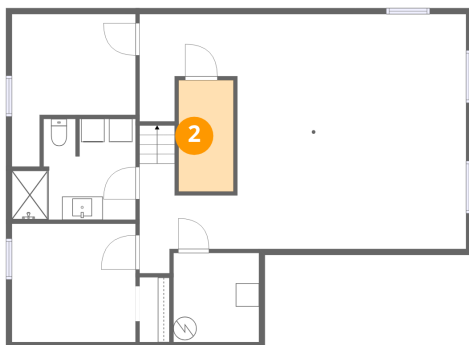
1 Floor 1 - Bath



Dimensions: 10'8" x 8'8"
Area: 79 sq. ft
Counted as living area: Yes

Heated: Yes
Finished: Yes
Enclosed: Yes
Contiguous: Yes
Permitted: Yes
Wet space: Yes
Addition: No
Conversion: No

2 Floor 1 - Storage

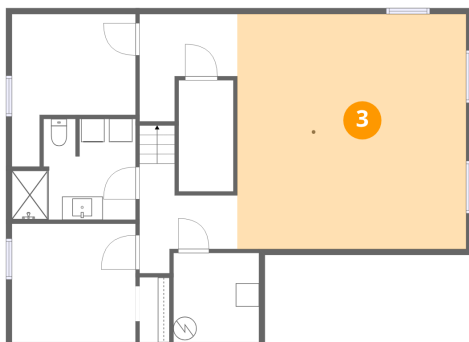


Dimensions: 4'8" x 9'7"
Area: 45 sq. ft
Counted as living area: No

Heated: No
Finished: No
Enclosed: No
Contiguous: Yes
Permitted: Yes
Wet space: No
Addition: No
Conversion: No

19 Spring Garden Avenue, Cityview - Crestview - Meadowlands, Crestview, Nepean, Ontario, Canada, K2G 3B1

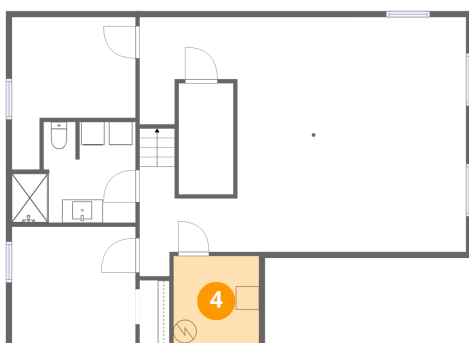
3 Floor 1 - Recreation Room



Dimensions: 19'8" x 20'1"
Area: 396 sq. ft
Counted as living area: Yes

Heated: Yes
Finished: Yes
Enclosed: Yes
Contiguous: Yes
Permitted: Yes
Wet space: No
Addition: No
Conversion: No

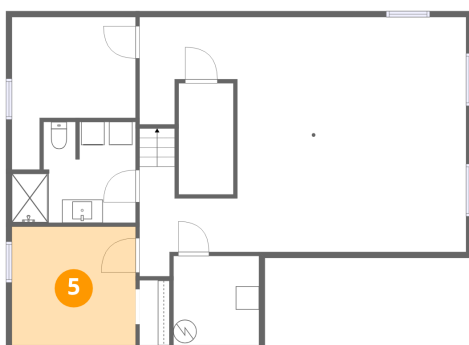
4 Floor 1 - Utility



Dimensions: 7'4" x 7'8"
Area: 56 sq. ft
Counted as living area: No

Heated: Yes
Finished: No
Enclosed: Yes
Contiguous: Yes
Permitted: Yes
Wet space: No
Addition: No
Conversion: No

5 Floor 1 - Bedroom

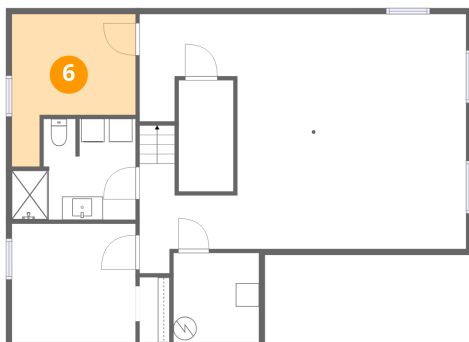


Dimensions: 10'8" x 10'2"
Area: 108 sq. ft
Counted as living area: Yes

Heated: Yes
Finished: Yes
Enclosed: Yes
Contiguous: Yes
Permitted: Yes
Wet space: No
Addition: No
Conversion: No

19 Spring Garden Avenue, Cityview - Crestview - Meadowlands, Crestview, Nepean, Ontario, Canada, K2G 3B1

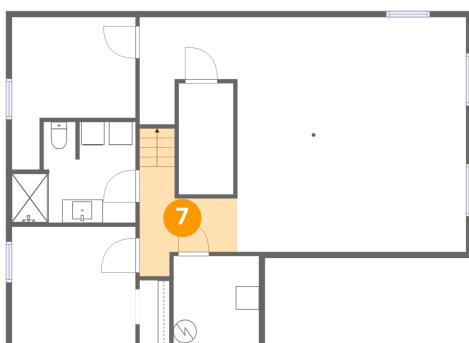
6 Floor 1 - Office



Dimensions: 10'8" x 13'1"
Area: 103 sq. ft
Counted as living area: Yes

Heated: Yes
Finished: Yes
Enclosed: Yes
Contiguous: Yes
Permitted: Yes
Wet space: No
Addition: No
Conversion: No

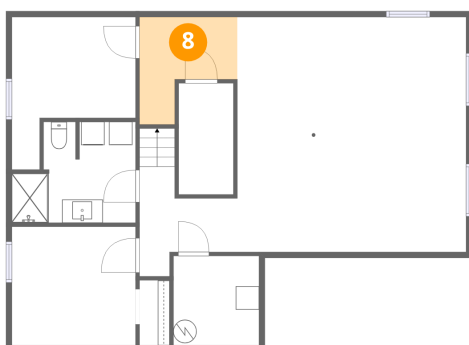
7 Floor 1 - Hall



Dimensions: 8'5" x 9'5"
Area: 62 sq. ft
Counted as living area: Yes

Heated: Yes
Finished: Yes
Enclosed: Yes
Contiguous: Yes
Permitted: Yes
Wet space: No
Addition: No
Conversion: No

8 Floor 1 - Hall

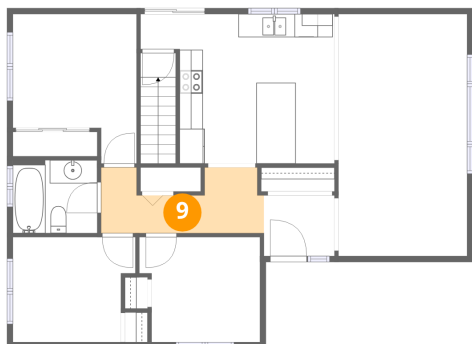


Dimensions: 8'5" x 9'2"
Area: 57 sq. ft
Counted as living area: Yes

Heated: Yes
Finished: Yes
Enclosed: Yes
Contiguous: Yes
Permitted: Yes
Wet space: No
Addition: No
Conversion: No

19 Spring Garden Avenue, Cityview - Crestview - Meadowlands, Crestview, Nepean, Ontario, Canada, K2G 3B1

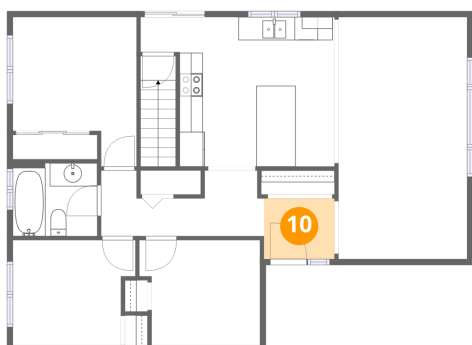
9 Floor 2 - Hall



Dimensions: 14'0" x 5'7"
Area: 63 sq. ft
Counted as living area: Yes

Heated: Yes
Finished: Yes
Enclosed: Yes
Contiguous: Yes
Permitted: Yes
Wet space: No
Addition: No
Conversion: No

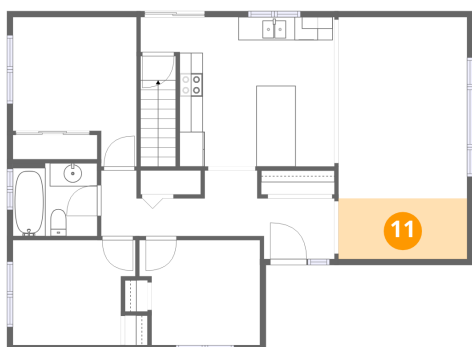
10 Floor 2 - Foyer



Dimensions: 6'1" x 5'3"
Area: 32 sq. ft
Counted as living area: Yes

Heated: Yes
Finished: Yes
Enclosed: Yes
Contiguous: Yes
Permitted: Yes
Wet space: No
Addition: No
Conversion: No

11 Floor 2 - Dining Area

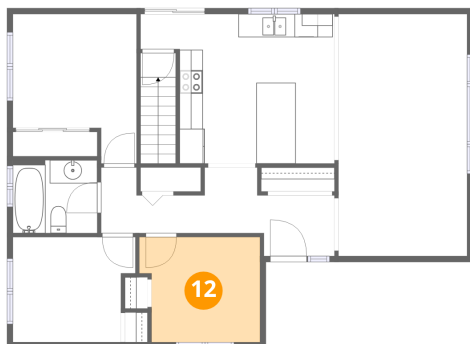


Dimensions: 11'1" x 5'3"
Area: 58 sq. ft
Counted as living area: Yes

Heated: Yes
Finished: Yes
Enclosed: Yes
Contiguous: Yes
Permitted: Yes
Wet space: No
Addition: No
Conversion: No

19 Spring Garden Avenue, Cityview - Crestview - Meadowlands, Crestview, Nepean, Ontario, Canada, K2G 3B1

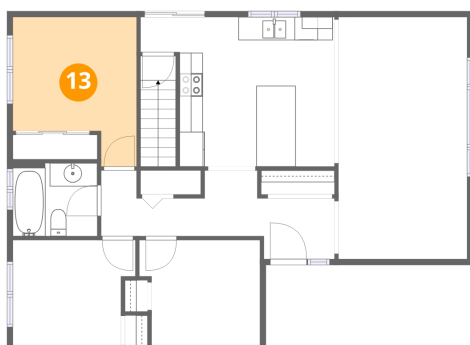
12 Floor 2 - Bedroom



Dimensions: 10'4" x 9'0"
Area: 87 sq. ft
Counted as living area: Yes

Heated: Yes
Finished: Yes
Enclosed: Yes
Contiguous: Yes
Permitted: Yes
Wet space: No
Addition: No
Conversion: No

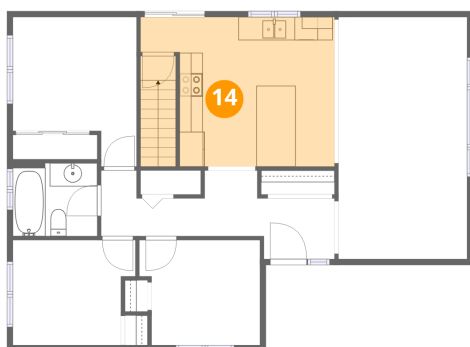
13 Floor 2 - Primary Bedroom



Dimensions: 10'8" x 12'10"
Area: 113 sq. ft
Counted as living area: Yes

Heated: Yes
Finished: Yes
Enclosed: Yes
Contiguous: Yes
Permitted: Yes
Wet space: No
Addition: No
Conversion: No

14 Floor 2 - Kitchen

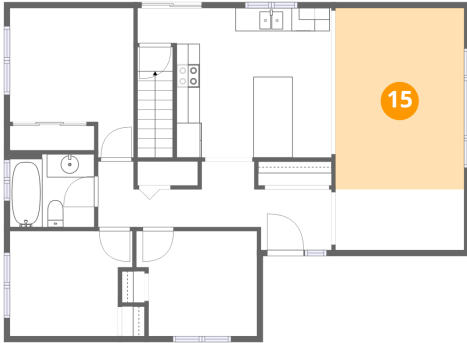


Dimensions: 16'7" x 12'9"
Area: 210 sq. ft
Counted as living area: Yes

Heated: Yes
Finished: Yes
Enclosed: Yes
Contiguous: Yes
Permitted: Yes
Wet space: No
Addition: No
Conversion: No

19 Spring Garden Avenue, Cityview - Crestview - Meadowlands,
Crestview, Nepean, Ontario, Canada, K2G 3B1

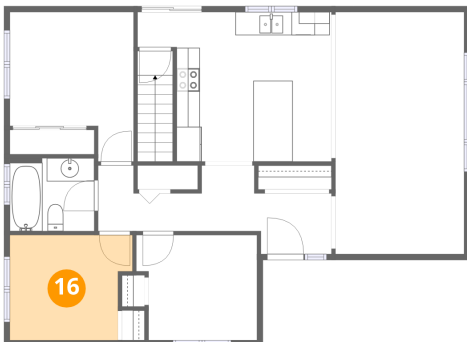
15 Floor 2 - Living Room



Dimensions: 11'0" x 15'6"
Area: 172 sq. ft
Counted as living area: Yes

Heated: Yes
Finished: Yes
Enclosed: Yes
Contiguous: Yes
Permitted: Yes
Wet space: No
Addition: No
Conversion: No

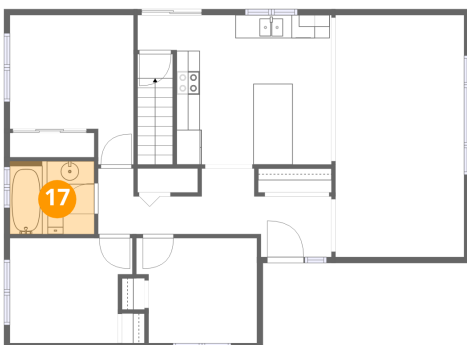
16 Floor 2 - Bedroom



Dimensions: 10'6" x 9'0"
Area: 87 sq. ft
Counted as living area: Yes

Heated: Yes
Finished: Yes
Enclosed: Yes
Contiguous: Yes
Permitted: Yes
Wet space: No
Addition: No
Conversion: No

17 Floor 2 - Bath



Dimensions: 7'3" x 6'3"
Area: 45 sq. ft
Counted as living area: Yes

Heated: Yes
Finished: Yes
Enclosed: Yes
Contiguous: Yes
Permitted: Yes
Wet space: Yes
Addition: No
Conversion: No