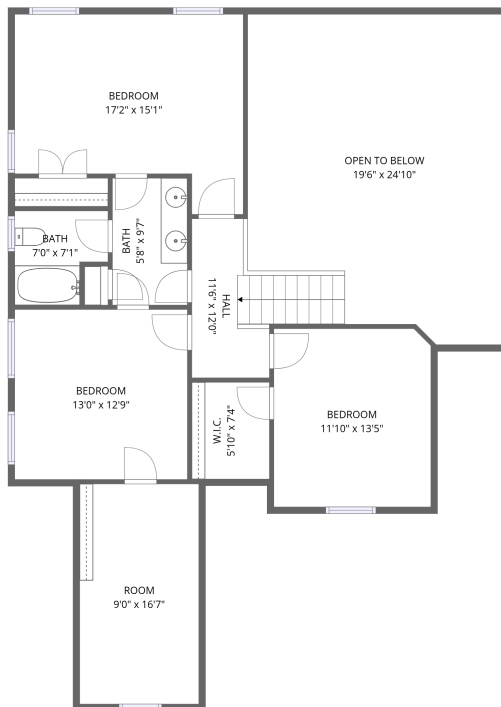


1st floor



2nd floor

Total Area: 2770 sq. ft

1st Floor: 1796 sq. ft, 2nd Floor: 974 sq. ft

Excluded: Garage 408 sq. ft, Open to below 435 sq. ft, Walls: 215 sq. ft

Property summary



Home data report

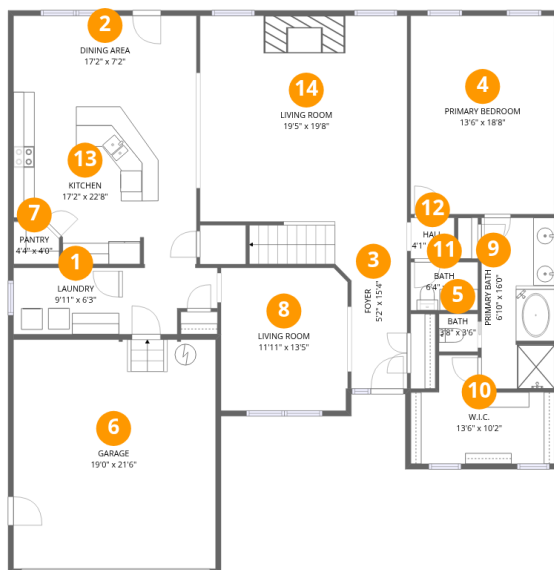
1740 Land of Promise Rd, Chesapeake, VA, US



1
Half baths



1
Garages



Room dimensions

Floor 1

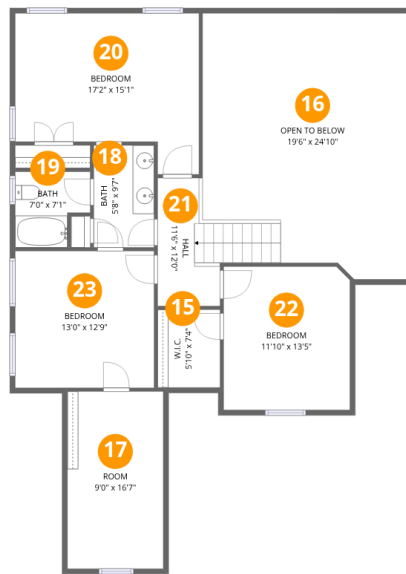
Total:1796sqft Excluded: 408sqft

#		Dimensions	sqft	Counted as living area
1	Laundry	9'11" x 6'3"	62 sq. ft	Yes
2	Dining Area	17'2" x 7'2"	123 sq. ft	Yes
3	Foyer	5'2" x 15'4"	79 sq. ft	Yes
4	Primary Bedroom	13'6" x 18'8"	252 sq. ft	Yes
5	Bath	3'8" x 3'6"	13 sq. ft	Yes
6	Garage	19'0" x 21'6"	408 sq. ft	No
7	Pantry	4'4" x 4'0"	17 sq. ft	Yes
8	Living Room	11'11" x 13'5"	160 sq. ft	Yes
9	Primary Bath	6'10" x 16'0"	110 sq. ft	Yes
10	W.I.C.	13'6" x 10'2"	138 sq. ft	Yes
11	Bath	6'4" x 4'6"	29 sq. ft	Yes

Home data report

1740 Land of Promise Rd, Chesapeake, VA, US

#		Dimensions	sqft	Counted as living area
12	Hall	4'1" x 3'10"	16 sq. ft	Yes
13	Kitchen	17'2" x 22'8"	389 sq. ft	Yes
14	Living Room	19'5" x 19'8"	382 sq. ft	Yes



Room dimensions

Floor 2

Total:974sqft

Excluded: 435sqft

#		Dimensions	sqft	Counted as living area
15	W.I.C.	5'10" x 7'4"	43 sq. ft	Yes
16	Open To Below	19'6" x 24'10"	484 sq. ft	No
17	Room	9'0" x 16'7"	148 sq. ft	Yes
18	Bath	5'8" x 9'7"	54 sq. ft	Yes
19	Bath	7'0" x 7'1"	50 sq. ft	Yes
20	Bedroom	17'2" x 15'1"	259 sq. ft	Yes
21	Hall	11'6" x 12'0"	138 sq. ft	Yes
22	Bedroom	11'10" x 13'5"	158 sq. ft	Yes
23	Bedroom	13'0" x 12'9"	166 sq. ft	Yes

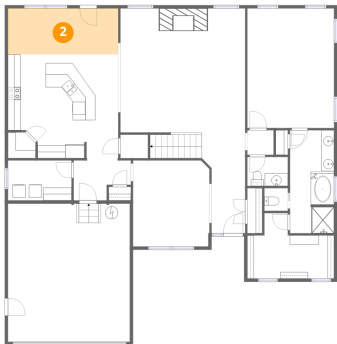
1 Floor 1 - Laundry



Dimensions: 9'11" x 6'3"
Area: 62 sq. ft
Counted as living area: Yes

Heated: Yes
Finished: Yes
Enclosed: Yes
Contiguous: Yes
Permitted: Yes
Wet space: No
Addition: No
Conversion: No

2 Floor 1 - Dining Area



Dimensions: 17'2" x 7'2"
Area: 123 sq. ft
Counted as living area: Yes

Heated: Yes
Finished: Yes
Enclosed: Yes
Contiguous: Yes
Permitted: Yes
Wet space: No
Addition: No
Conversion: No

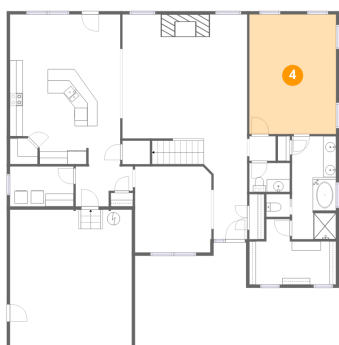
3 Floor 1 - Foyer



Dimensions: 5'2" x 15'4"
Area: 79 sq. ft
Counted as living area: Yes

Heated: Yes
Finished: Yes
Enclosed: Yes
Contiguous: Yes
Permitted: Yes
Wet space: No
Addition: No
Conversion: No

4 Floor 1 - Primary Bedroom



Dimensions: 13'6" x 18'8"
Area: 252 sq. ft
Counted as living area: Yes

Heated: Yes
Finished: Yes
Enclosed: Yes
Contiguous: Yes
Permitted: Yes
Wet space: No
Addition: No
Conversion: No

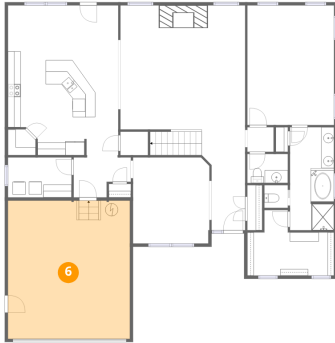
5 Floor 1 - Bath



Dimensions: 3'8" x 3'6"
Area: 13 sq. ft
Counted as living area: Yes

Heated: Yes
Finished: Yes
Enclosed: Yes
Contiguous: Yes
Permitted: Yes
Wet space: Yes
Addition: No
Conversion: No

6 Floor 1 - Garage



Dimensions: 19'0" x 21'6"
Area: 408 sq. ft
Counted as living area: No

Heated: No
Finished: No
Enclosed: Yes
Contiguous: Yes
Permitted: Yes
Wet space: No
Addition: No
Conversion: No

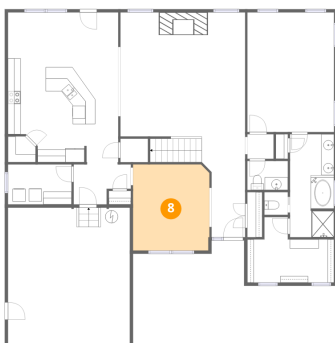
7 Floor 1 - Pantry



Dimensions: 4'4" x 4'0"
Area: 17 sq. ft
Counted as living area: Yes

Heated: Yes
Finished: Yes
Enclosed: Yes
Contiguous: Yes
Permitted: Yes
Wet space: No
Addition: No
Conversion: No

8 Floor 1 - Living Room



Dimensions: 11'11" x 13'5"
Area: 160 sq. ft
Counted as living area: Yes

Heated: Yes
Finished: Yes
Enclosed: Yes
Contiguous: Yes
Permitted: Yes
Wet space: No
Addition: No
Conversion: No

9 Floor 1 - Primary Bath



Dimensions: 6'10" x 16'0"
Area: 110 sq. ft
Counted as living area: Yes

Heated: Yes
Finished: Yes
Enclosed: Yes
Contiguous: Yes
Permitted: Yes
Wet space: Yes
Addition: No
Conversion: No

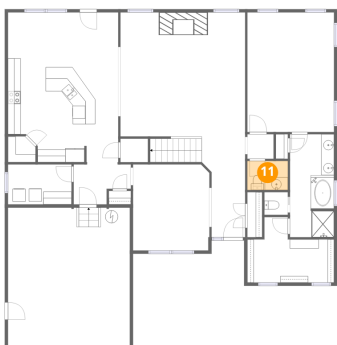
10 Floor 1 - W.I.C.



Dimensions: 13'6" x 10'2"
Area: 138 sq. ft
Counted as living area: Yes

Heated: Yes
Finished: Yes
Enclosed: Yes
Contiguous: Yes
Permitted: Yes
Wet space: No
Addition: No
Conversion: No

11 Floor 1 - Bath



Dimensions: 6'4" x 4'6"
Area: 29 sq. ft
Counted as living area: Yes

Heated: Yes
Finished: Yes
Enclosed: Yes
Contiguous: Yes
Permitted: Yes
Wet space: Yes
Addition: No
Conversion: No

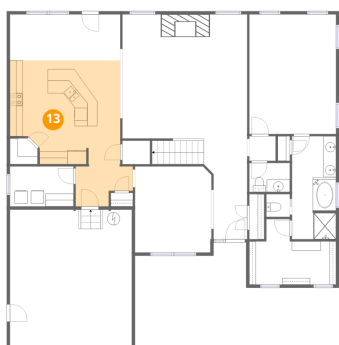
12 Floor 1 - Hall



Dimensions: 4'1" x 3'10"
Area: 16 sq. ft
Counted as living area: Yes

Heated: Yes
Finished: Yes
Enclosed: Yes
Contiguous: Yes
Permitted: Yes
Wet space: No
Addition: No
Conversion: No

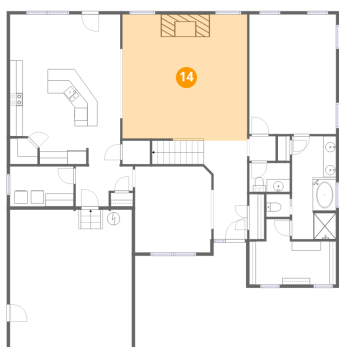
13 Floor 1 - Kitchen



Dimensions: 17'2" x 22'8"
Area: 389 sq. ft
Counted as living area: Yes

Heated: Yes
Finished: Yes
Enclosed: Yes
Contiguous: Yes
Permitted: Yes
Wet space: No
Addition: No
Conversion: No

14 Floor 1 - Living Room



Dimensions: 19'5" x 19'8"
Area: 382 sq. ft
Counted as living area: Yes

Heated: Yes
Finished: Yes
Enclosed: Yes
Contiguous: Yes
Permitted: Yes
Wet space: No
Addition: No
Conversion: No

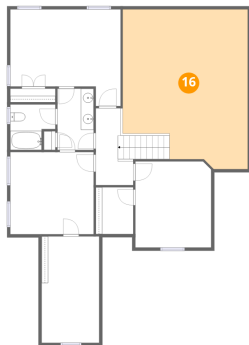
15 Floor 2 - W.I.C.



Dimensions: 5'10" x 7'4"
Area: 43 sq. ft
Counted as living area: Yes

Heated: Yes
Finished: Yes
Enclosed: Yes
Contiguous: Yes
Permitted: Yes
Wet space: No
Addition: No
Conversion: No

16 Floor 2 - Open To Below



Dimensions: 19'6" x 24'10"
Area: 484 sq. ft
Counted as living area: No

Heated: No
Finished: No
Enclosed: No
Contiguous: Yes
Permitted: No
Wet space: No
Addition: No
Conversion: No

17 Floor 2 - Room



Dimensions: 9'0" x 16'7"
Area: 148 sq. ft
Counted as living area: Yes

Heated: Yes
Finished: Yes
Enclosed: Yes
Contiguous: Yes
Permitted: Yes
Wet space: No
Addition: No
Conversion: No

18 Floor 2 - Bath



Dimensions: 5'8" x 9'7"
Area: 54 sq. ft
Counted as living area: Yes

Heated: Yes
Finished: Yes
Enclosed: Yes
Contiguous: Yes
Permitted: Yes
Wet space: Yes
Addition: No
Conversion: No

19 Floor 2 - Bath



Dimensions: 7'0" x 7'1"
Area: 50 sq. ft
Counted as living area: Yes

Heated: Yes
Finished: Yes
Enclosed: Yes
Contiguous: Yes
Permitted: Yes
Wet space: Yes
Addition: No
Conversion: No

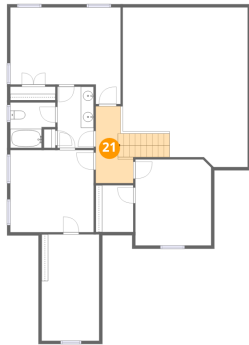
20 Floor 2 - Bedroom



Dimensions: 17'2" x 15'1"
Area: 259 sq. ft
Counted as living area: Yes

Heated: Yes
Finished: Yes
Enclosed: Yes
Contiguous: Yes
Permitted: Yes
Wet space: No
Addition: No
Conversion: No

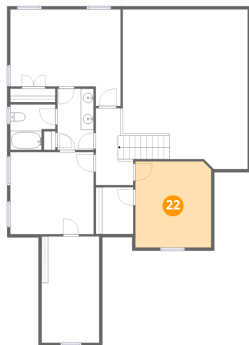
21 Floor 2 - Hall



Dimensions: 11'6" x 12'0"
Area: 138 sq. ft
Counted as living area: Yes

Heated: Yes
Finished: Yes
Enclosed: Yes
Contiguous: Yes
Permitted: Yes
Wet space: No
Addition: No
Conversion: No

22 Floor 2 - Bedroom



Dimensions: 11'10" x 13'5"
Area: 158 sq. ft
Counted as living area: Yes

Heated: Yes
Finished: Yes
Enclosed: Yes
Contiguous: Yes
Permitted: Yes
Wet space: No
Addition: No
Conversion: No

23 Floor 2 - Bedroom



Dimensions: 13'0" x 12'9"
Area: 166 sq. ft
Counted as living area: Yes

Heated: Yes
Finished: Yes
Enclosed: Yes
Contiguous: Yes
Permitted: Yes
Wet space: No
Addition: No
Conversion: No