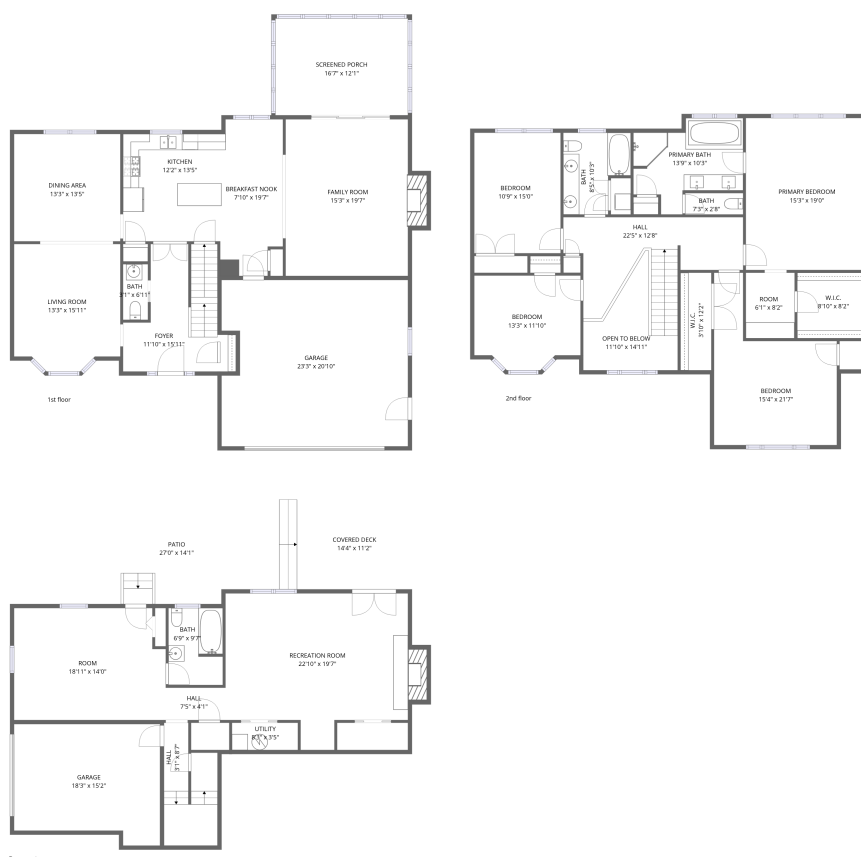


Home data report

6516 Hidden Woods Drive, Roanoke, Virginia 24018, United States



Total Area: 3637 sq. ft

Basement: 882 sq. ft, 1st Floor: 1216 sq. ft, 2nd Floor: 1539 sq. ft

Excluded: Garage 722 sq. ft, Utility 29 sq. ft, Undefined 16 sq. ft, Patio 320 sq. ft, Covered deck 184 sq. ft, Fireplace 36 sq. ft, Screened porch 200 sq. ft, Open to below 93 sq. ft, Walls: 318 sq. ft

Property summary



Home data report

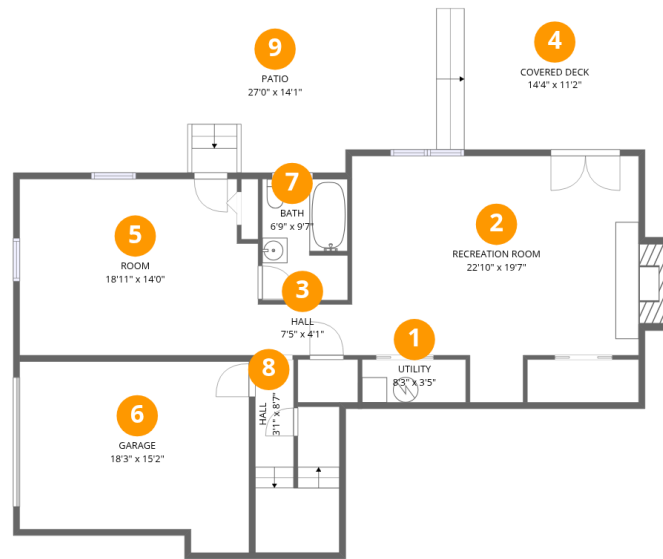
6516 Hidden Woods Drive, Roanoke, Virginia 24018, United States

 **1**
Half baths

 **2**
Garages

Home data report

6516 Hidden Woods Drive, Roanoke, Virginia 24018, United States



Room dimensions

Floor 1 Below grade

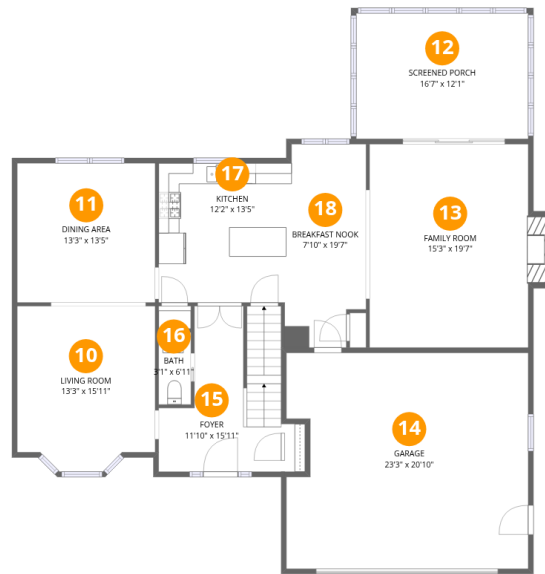
Total:882sqft

Excluded: 818sqft

#		Dimensions	sqft	Counted as living area
1	Utility	8'3" x 3'5"	28 sq. ft	No
2	Recreation Room	22'10" x 19'7"	447 sq. ft	Yes
3	Hall	7'5" x 4'1"	30 sq. ft	Yes
4	Covered Deck	14'4" x 11'2"	161 sq. ft	No
5	Room	18'11" x 14'0"	265 sq. ft	Yes
6	Garage	18'3" x 15'2"	277 sq. ft	No
7	Bath	6'9" x 9'7"	65 sq. ft	Yes
8	Hall	3'1" x 8'7"	26 sq. ft	Yes
9	Patio	27'0" x 14'1"	379 sq. ft	No

Home data report

6516 Hidden Woods Drive, Roanoke, Virginia 24018, United States



Room dimensions

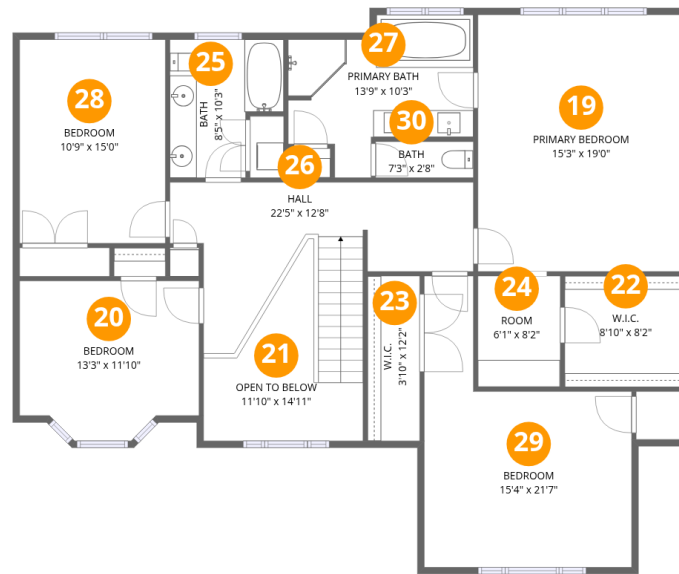
Floor 2

Total:1216sqft Excluded: 689sqft

#		Dimensions	sqft	Counted as living area
10	Living Room	13'3" x 15'11"	211 sq. ft	Yes
11	Dining Area	13'3" x 13'5"	178 sq. ft	Yes
12	Screened Porch	16'7" x 12'1"	200 sq. ft	No
13	Family Room	15'3" x 19'7"	299 sq. ft	Yes
14	Garage	23'3" x 20'10"	484 sq. ft	No
15	Foyer	11'10" x 15'11"	188 sq. ft	Yes
16	Bath	3'1" x 6'11"	22 sq. ft	Yes
17	Kitchen	12'2" x 13'5"	163 sq. ft	Yes
18	Breakfast Nook	7'10" x 19'7"	153 sq. ft	Yes

Home data report

6516 Hidden Woods Drive, Roanoke, Virginia 24018, United States



Room dimensions

Floor 3

Total:1539sqft

Excluded: 93sqft

#		Dimensions	sqft	Counted as living area
19	Primary Bedroom	15'3" x 19'0"	290 sq. ft	Yes
20	Bedroom	13'3" x 11'10"	157 sq. ft	Yes
21	Open To Below	11'10" x 14'11"	177 sq. ft	No
22	W.I.C.	8'10" x 8'2"	73 sq. ft	Yes
23	W.I.C.	3'10" x 12'2"	47 sq. ft	Yes
24	Room	6'1" x 8'2"	50 sq. ft	Yes
25	Bath	8'5" x 10'3"	86 sq. ft	Yes
26	Hall	22'5" x 12'8"	285 sq. ft	Yes
27	Primary Bath	13'9" x 10'3"	140 sq. ft	Yes
28	Bedroom	10'9" x 15'0"	162 sq. ft	Yes
29	Bedroom	15'4" x 21'7"	331 sq. ft	Yes

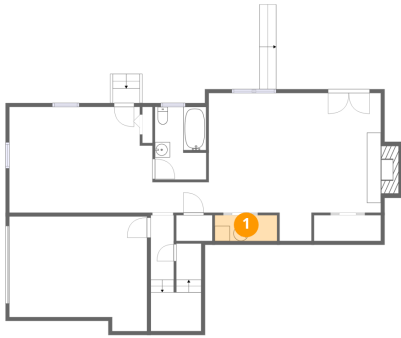
Home data report

6516 Hidden Woods Drive, Roanoke, Virginia 24018, United States

#		Dimensions	sqft	Counted as living area
30	Bath	7'3" x 2'8"	19 sq. ft	Yes

6516 Hidden Woods Drive, Roanoke, Virginia 24018, United States

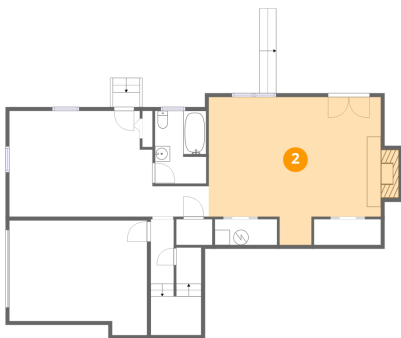
1 Floor 1 - Utility



Dimensions: 8'3" x 3'5"
Area: 28 sq. ft
Counted as living area: No

Heated: Yes
Finished: No
Enclosed: Yes
Contiguous: Yes
Permitted: Yes
Wet space: No
Addition: No
Conversion: No

2 Floor 1 - Recreation Room

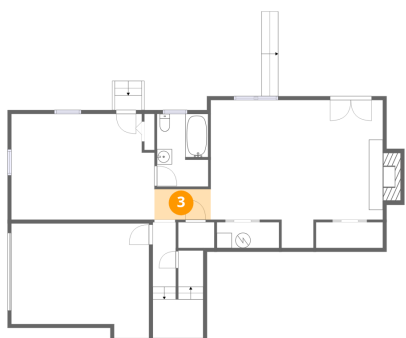


Dimensions: 22'10" x 19'7"
Area: 447 sq. ft
Counted as living area: Yes

Heated: Yes
Finished: Yes
Enclosed: Yes
Contiguous: Yes
Permitted: Yes
Wet space: No
Addition: No
Conversion: No

6516 Hidden Woods Drive, Roanoke, Virginia 24018, United States

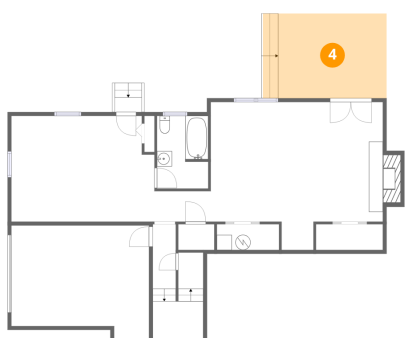
3 Floor 1 - Hall



Dimensions: 7'5" x 4'1"
Area: 30 sq. ft
Counted as living area: Yes

Heated: Yes
Finished: Yes
Enclosed: Yes
Contiguous: Yes
Permitted: Yes
Wet space: No
Addition: No
Conversion: No

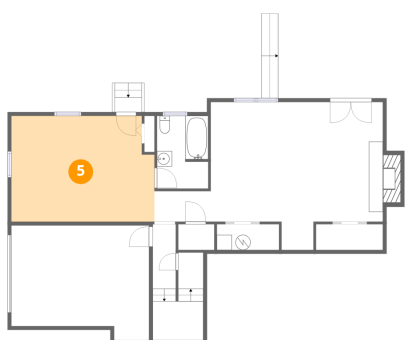
4 Floor 1 - Covered Deck



Dimensions: 14'4" x 11'2"
Area: 161 sq. ft
Counted as living area: No

Heated: No
Finished: No
Enclosed: No
Contiguous: Yes
Permitted: Yes
Wet space: No
Addition: No
Conversion: No

5 Floor 1 - Room

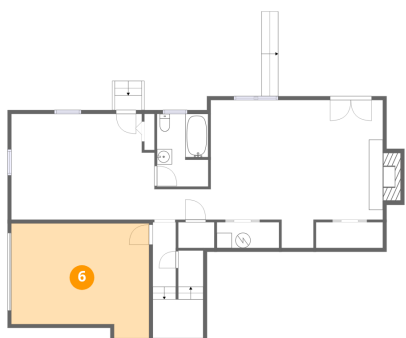


Dimensions: 18'11" x 14'0"
Area: 265 sq. ft
Counted as living area: Yes

Heated: Yes
Finished: Yes
Enclosed: Yes
Contiguous: Yes
Permitted: Yes
Wet space: No
Addition: No
Conversion: No

6516 Hidden Woods Drive, Roanoke, Virginia 24018, United States

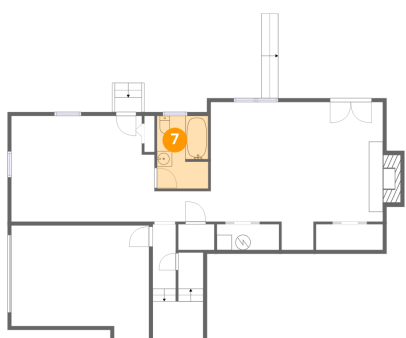
6 Floor 1 - Garage



Dimensions: 18'3" x 15'2"
Area: 277 sq. ft
Counted as living area: No

Heated: No
Finished: No
Enclosed: Yes
Contiguous: Yes
Permitted: Yes
Wet space: No
Addition: No
Conversion: No

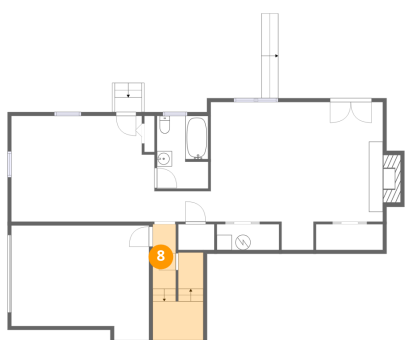
7 Floor 1 - Bath



Dimensions: 6'9" x 9'7"
Area: 65 sq. ft
Counted as living area: Yes

Heated: Yes
Finished: Yes
Enclosed: Yes
Contiguous: Yes
Permitted: Yes
Wet space: Yes
Addition: No
Conversion: No

8 Floor 1 - Hall

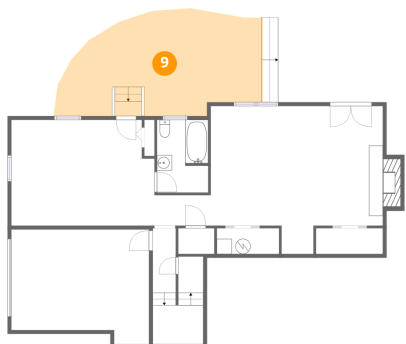


Dimensions: 3'1" x 8'7"
Area: 26 sq. ft
Counted as living area: Yes

Heated: Yes
Finished: Yes
Enclosed: Yes
Contiguous: Yes
Permitted: Yes
Wet space: No
Addition: No
Conversion: No

6516 Hidden Woods Drive, Roanoke, Virginia 24018, United States

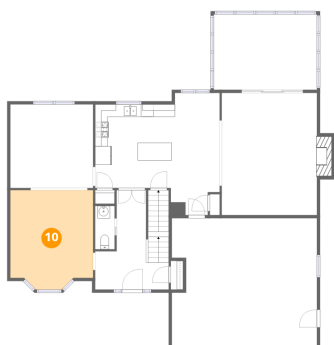
9 Floor 1 - Patio



Dimensions: 27'0" x 14'1"
Area: 379 sq. ft
Counted as living area: No

Heated: No
Finished: No
Enclosed: No
Contiguous: Yes
Permitted: Yes
Wet space: No
Addition: No
Conversion: No

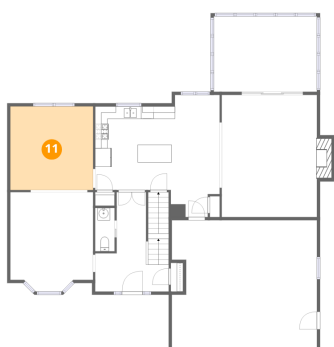
10 Floor 2 - Living Room



Dimensions: 13'3" x 15'11"
Area: 211 sq. ft
Counted as living area: Yes

Heated: Yes
Finished: Yes
Enclosed: Yes
Contiguous: Yes
Permitted: Yes
Wet space: No
Addition: No
Conversion: No

11 Floor 2 - Dining Area

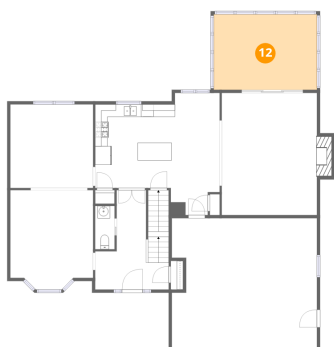


Dimensions: 13'3" x 13'5"
Area: 178 sq. ft
Counted as living area: Yes

Heated: Yes
Finished: Yes
Enclosed: Yes
Contiguous: Yes
Permitted: Yes
Wet space: No
Addition: No
Conversion: No

6516 Hidden Woods Drive, Roanoke, Virginia 24018, United States

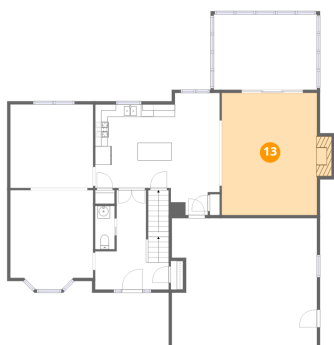
12 Floor 2 - Screened Porch



Dimensions: 16'7" x 12'1"
Area: 200 sq. ft
Counted as living area: No

Heated: No
Finished: No
Enclosed: No
Contiguous: Yes
Permitted: Yes
Wet space: No
Addition: No
Conversion: No

13 Floor 2 - Family Room



Dimensions: 15'3" x 19'7"
Area: 299 sq. ft
Counted as living area: Yes

Heated: Yes
Finished: Yes
Enclosed: Yes
Contiguous: Yes
Permitted: Yes
Wet space: No
Addition: No
Conversion: No

14 Floor 2 - Garage

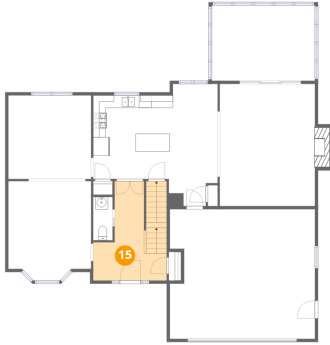


Dimensions: 23'3" x 20'10"
Area: 484 sq. ft
Counted as living area: No

Heated: No
Finished: No
Enclosed: Yes
Contiguous: Yes
Permitted: Yes
Wet space: No
Addition: No
Conversion: No

6516 Hidden Woods Drive, Roanoke, Virginia 24018, United States

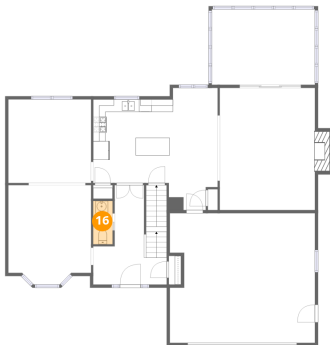
15 Floor 2 - Foyer



Dimensions: 11'10" x 15'11"
Area: 188 sq. ft
Counted as living area: Yes

Heated: Yes
Finished: Yes
Enclosed: Yes
Contiguous: Yes
Permitted: Yes
Wet space: No
Addition: No
Conversion: No

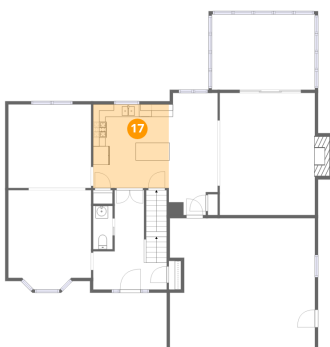
16 Floor 2 - Bath



Dimensions: 3'1" x 6'11"
Area: 22 sq. ft
Counted as living area: Yes

Heated: Yes
Finished: Yes
Enclosed: Yes
Contiguous: Yes
Permitted: Yes
Wet space: Yes
Addition: No
Conversion: No

17 Floor 2 - Kitchen



Dimensions: 12'2" x 13'5"
Area: 163 sq. ft
Counted as living area: Yes

Heated: Yes
Finished: Yes
Enclosed: Yes
Contiguous: Yes
Permitted: Yes
Wet space: No
Addition: No
Conversion: No

6516 Hidden Woods Drive, Roanoke, Virginia 24018, United States

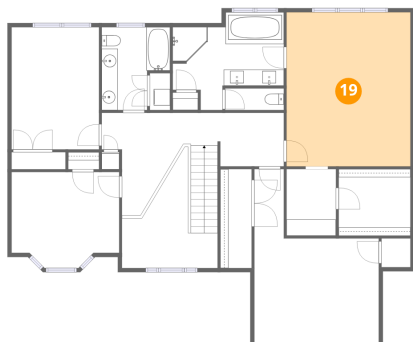
18 Floor 2 - Breakfast Nook



Dimensions: 7'10" x 19'7"
Area: 153 sq. ft
Counted as living area: Yes

Heated: Yes
Finished: Yes
Enclosed: Yes
Contiguous: Yes
Permitted: Yes
Wet space: No
Addition: No
Conversion: No

19 Floor 3 - Primary Bedroom



Dimensions: 15'3" x 19'0"
Area: 290 sq. ft
Counted as living area: Yes

Heated: Yes
Finished: Yes
Enclosed: Yes
Contiguous: Yes
Permitted: Yes
Wet space: No
Addition: No
Conversion: No

20 Floor 3 - Bedroom



Dimensions: 13'3" x 11'10"
Area: 157 sq. ft
Counted as living area: Yes

Heated: Yes
Finished: Yes
Enclosed: Yes
Contiguous: Yes
Permitted: Yes
Wet space: No
Addition: No
Conversion: No

6516 Hidden Woods Drive, Roanoke, Virginia 24018, United States

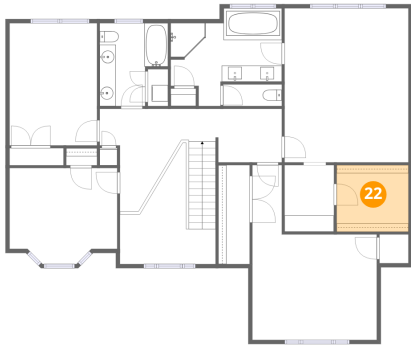
21 Floor 3 - Open To Below



Dimensions: 11'10" x 14'11"
Area: 177 sq. ft
Counted as living area: No

Heated: No
Finished: No
Enclosed: No
Contiguous: Yes
Permitted: No
Wet space: No
Addition: No
Conversion: No

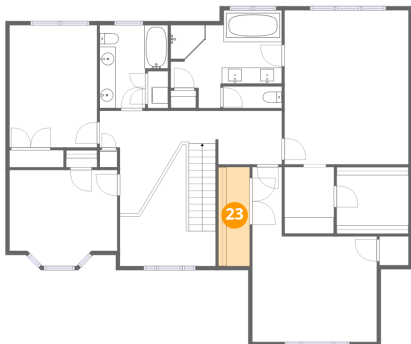
22 Floor 3 - W.I.C.



Dimensions: 8'10" x 8'2"
Area: 73 sq. ft
Counted as living area: Yes

Heated: Yes
Finished: Yes
Enclosed: Yes
Contiguous: Yes
Permitted: Yes
Wet space: No
Addition: No
Conversion: No

23 Floor 3 - W.I.C.

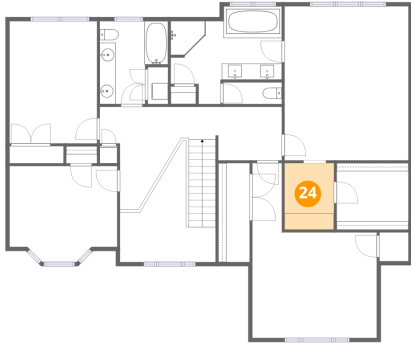


Dimensions: 3'10" x 12'2"
Area: 47 sq. ft
Counted as living area: Yes

Heated: Yes
Finished: Yes
Enclosed: Yes
Contiguous: Yes
Permitted: Yes
Wet space: No
Addition: No
Conversion: No

6516 Hidden Woods Drive, Roanoke, Virginia 24018, United States

24 Floor 3 - Room



Dimensions: 6'1" x 8'2"
Area: 50 sq. ft
Counted as living area: Yes

Heated: Yes
Finished: Yes
Enclosed: Yes
Contiguous: Yes
Permitted: Yes
Wet space: No
Addition: No
Conversion: No

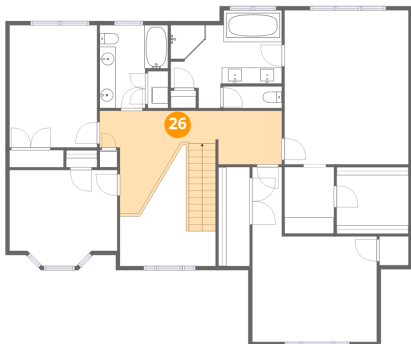
25 Floor 3 - Bath



Dimensions: 8'5" x 10'3"
Area: 86 sq. ft
Counted as living area: Yes

Heated: Yes
Finished: Yes
Enclosed: Yes
Contiguous: Yes
Permitted: Yes
Wet space: Yes
Addition: No
Conversion: No

26 Floor 3 - Hall



Dimensions: 22'5" x 12'8"
Area: 285 sq. ft
Counted as living area: Yes

Heated: Yes
Finished: Yes
Enclosed: Yes
Contiguous: Yes
Permitted: Yes
Wet space: No
Addition: No
Conversion: No

6516 Hidden Woods Drive, Roanoke, Virginia 24018, United States

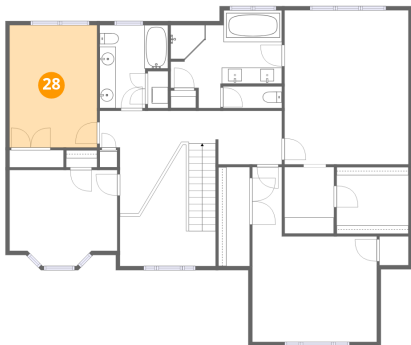
27 Floor 3 - Primary Bath



Dimensions: 13'9" x 10'3"
Area: 140 sq. ft
Counted as living area: Yes

Heated: Yes
Finished: Yes
Enclosed: Yes
Contiguous: Yes
Permitted: Yes
Wet space: Yes
Addition: No
Conversion: No

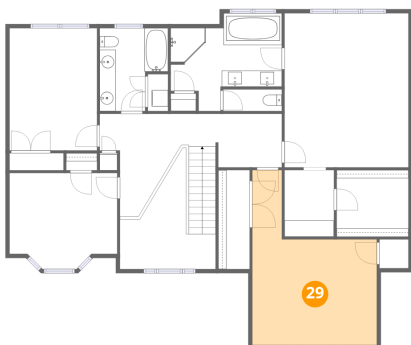
28 Floor 3 - Bedroom



Dimensions: 10'9" x 15'0"
Area: 162 sq. ft
Counted as living area: Yes

Heated: Yes
Finished: Yes
Enclosed: Yes
Contiguous: Yes
Permitted: Yes
Wet space: No
Addition: No
Conversion: No

29 Floor 3 - Bedroom

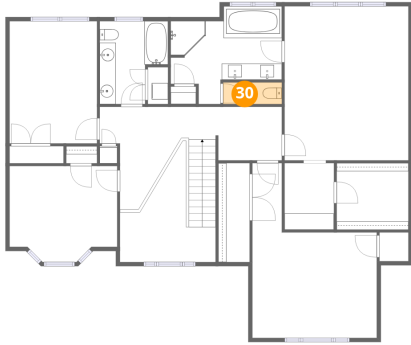


Dimensions: 15'4" x 21'7"
Area: 331 sq. ft
Counted as living area: Yes

Heated: Yes
Finished: Yes
Enclosed: Yes
Contiguous: Yes
Permitted: Yes
Wet space: No
Addition: No
Conversion: No

6516 Hidden Woods Drive, Roanoke, Virginia 24018, United States

30 Floor 3 - Bath



Dimensions: 7'3" x 2'8"
Area: 19 sq. ft
Counted as living area: Yes

Heated: Yes
Finished: Yes
Enclosed: Yes
Contiguous: Yes
Permitted: Yes
Wet space: Yes
Addition: No
Conversion: No