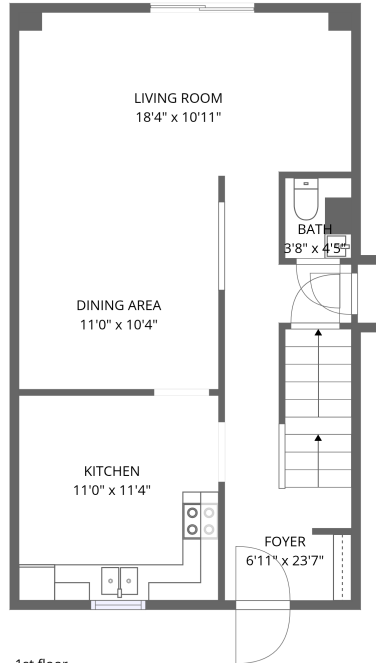
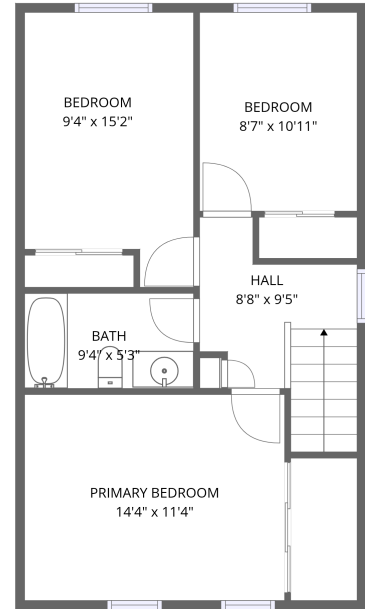


Basement



1st floor



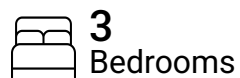
2nd floor

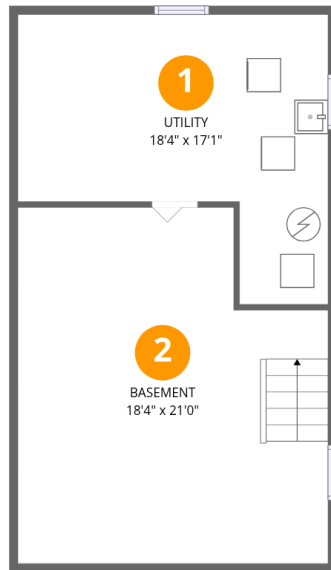
Total Area: 1555 sq. ft

Basement: 360 sq. ft, 1st Floor: 601 sq. ft, 2nd Floor: 594 sq. ft

Excluded: Utility 234 sq. ft, Walls: 155 sq. ft

Property summary





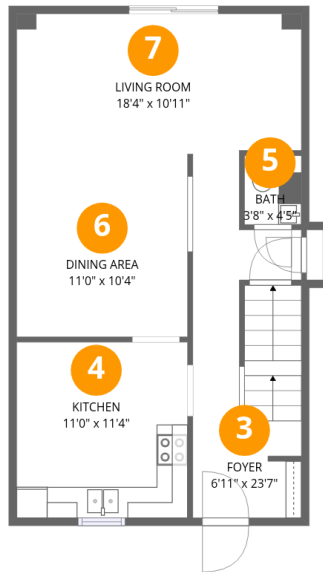
Room dimensions

Floor 1 Below grade

Total:360sqft

Excluded: 234sqft

#		Dimensions	sqft	Counted as living area
1	Utility	18'4" x 17'1"	234 sq. ft	No
2	Basement	18'4" x 21'0"	352 sq. ft	Yes



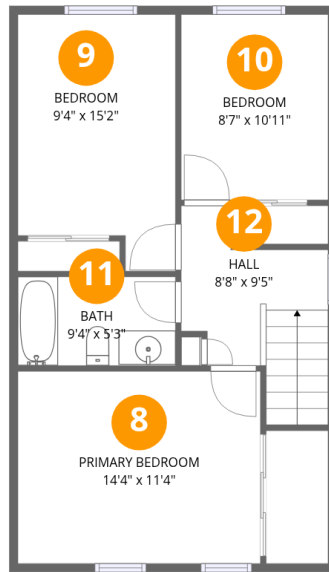
Room dimensions

Floor 2

Total:601sqft

Excluded: 0sqft

#		Dimensions	sqft	Counted as living area
3	Foyer	6'11" x 23'7"	142 sq. ft	Yes
4	Kitchen	11'0" x 11'4"	124 sq. ft	Yes
5	Bath	3'8" x 4'5"	16 sq. ft	Yes
6	Dining Area	11'0" x 10'4"	115 sq. ft	Yes
7	Living Room	18'4" x 10'11"	182 sq. ft	Yes



Room dimensions

Floor 3

Total: 594 sqft

Excluded: 0 sqft

#		Dimensions	sqft	Counted as living area
8	Primary Bedroom	14'4" x 11'4"	163 sq. ft	Yes
9	Bedroom	9'4" x 15'2"	128 sq. ft	Yes
10	Bedroom	8'7" x 10'11"	95 sq. ft	Yes
11	Bath	9'4" x 5'3"	49 sq. ft	Yes
12	Hall	8'8" x 9'5"	77 sq. ft	Yes

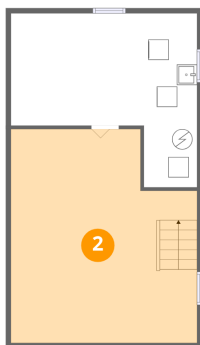
1 Floor 1 - Utility



Dimensions: 18'4" x 17'1"
Area: 234 sq. ft
Counted as living area: No

Heated: Yes
Finished: No
Enclosed: Yes
Contiguous: Yes
Permitted: Yes
Wet space: No
Addition: No
Conversion: No

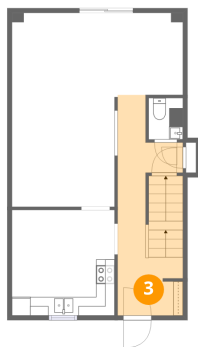
2 Floor 1 - Basement



Dimensions: 18'4" x 21'0"
Area: 352 sq. ft
Counted as living area: No

Heated: Yes
Finished: Yes
Enclosed: Yes
Contiguous: No
Permitted: Yes
Wet space: No
Addition: No
Conversion: No

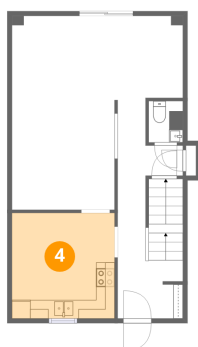
3 Floor 2 - Foyer



Dimensions: 6'11" x 23'7"
Area: 142 sq. ft
Counted as living area: Yes

Heated: Yes
Finished: Yes
Enclosed: Yes
Contiguous: Yes
Permitted: Yes
Wet space: No
Addition: No
Conversion: No

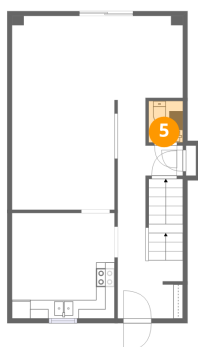
4 Floor 2 - Kitchen



Dimensions: 11'0" x 11'4"
Area: 124 sq. ft
Counted as living area: Yes

Heated: Yes
Finished: Yes
Enclosed: Yes
Contiguous: Yes
Permitted: Yes
Wet space: No
Addition: No
Conversion: No

5 Floor 2 - Bath



Dimensions: 3'8" x 4'5"
Area: 16 sq. ft
Counted as living area: Yes

Heated: Yes
Finished: Yes
Enclosed: Yes
Contiguous: Yes
Permitted: Yes
Wet space: Yes
Addition: No
Conversion: No

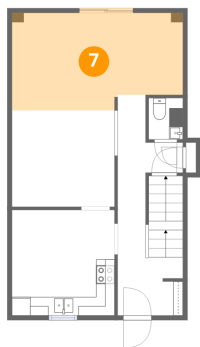
6 Floor 2 - Dining Area



Dimensions: 11'0" x 10'4"
Area: 115 sq. ft
Counted as living area: Yes

Heated: Yes
Finished: Yes
Enclosed: Yes
Contiguous: Yes
Permitted: Yes
Wet space: No
Addition: No
Conversion: No

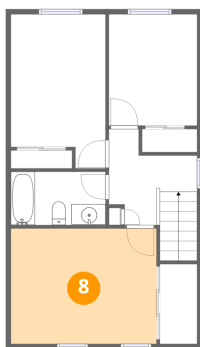
7 Floor 2 - Living Room



Dimensions: 18'4" x 10'11"
Area: 182 sq. ft
Counted as living area: Yes

Heated: Yes
Finished: Yes
Enclosed: Yes
Contiguous: Yes
Permitted: Yes
Wet space: No
Addition: No
Conversion: No

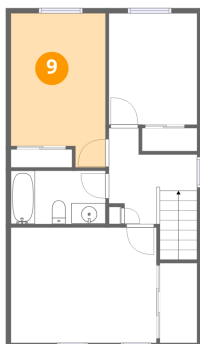
8 Floor 3 - Primary Bedroom



Dimensions: 14'4" x 11'4"
Area: 163 sq. ft
Counted as living area: Yes

Heated: Yes
Finished: Yes
Enclosed: Yes
Contiguous: Yes
Permitted: Yes
Wet space: No
Addition: No
Conversion: No

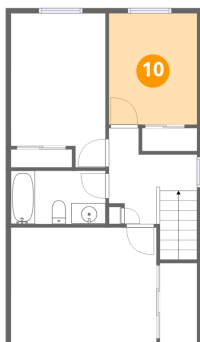
9 Floor 3 - Bedroom



Dimensions: 9'4" x 15'2"
Area: 128 sq. ft
Counted as living area: Yes

Heated: Yes
Finished: Yes
Enclosed: Yes
Contiguous: Yes
Permitted: Yes
Wet space: No
Addition: No
Conversion: No

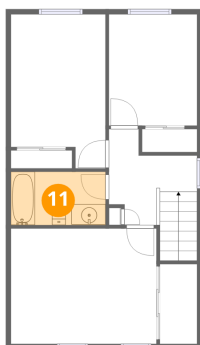
10 Floor 3 - Bedroom



Dimensions: 8'7" x 10'11"
Area: 95 sq. ft
Counted as living area: Yes

Heated: Yes
Finished: Yes
Enclosed: Yes
Contiguous: Yes
Permitted: Yes
Wet space: No
Addition: No
Conversion: No

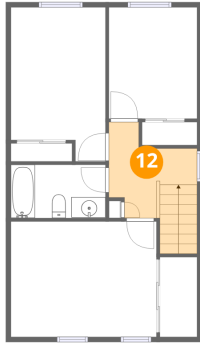
11 Floor 3 - Bath



Dimensions: 9'4" x 5'3"
Area: 49 sq. ft
Counted as living area: Yes

Heated: Yes
Finished: Yes
Enclosed: Yes
Contiguous: Yes
Permitted: Yes
Wet space: Yes
Addition: No
Conversion: No

12 Floor 3 - Hall



Dimensions: 8'8" x 9'5"
Area: 77 sq. ft
Counted as living area: Yes

Heated: Yes
Finished: Yes
Enclosed: Yes
Contiguous: Yes
Permitted: Yes
Wet space: No
Addition: No
Conversion: No