

Home data report

1874 Main Road, Tiverton, Newport County, Rhode Island,
United States, 02878



Total Area: 3832 sq. ft

Below Ground: 386 sq. ft, 1st Floor: 1707 sq. ft, 2nd Floor: 1248 sq. ft, 3rd Floor: 491 sq. ft
Excluded: Utility 194 sq. ft, Storage 118 sq. ft, Basement 693 sq. ft, Low ceiling 498 sq. ft,
Garage 402 sq. ft, Stairwell 63 sq. ft, Walls: 403 sq. ft

Property summary

 **4** Floors

 **3** Bedrooms

 **3** Bathrooms

Home data report

**1874 Main Road, Tiverton, Newport County, Rhode Island,
United States, 02878**



2
Half baths



1
Garages

Home data report

1874 Main Road, Tiverton, Newport County, Rhode Island,
United States, 02878



Room dimensions

Floor 1 Below grade

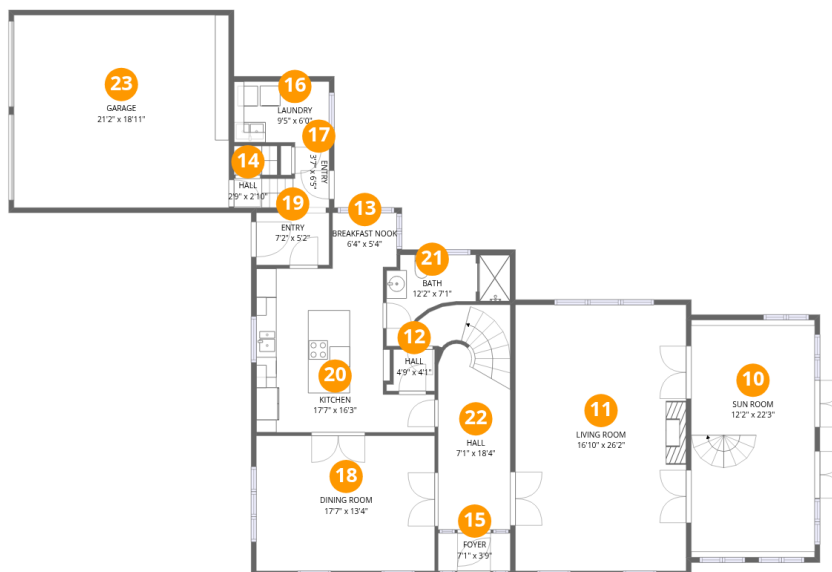
Total:386sqft

Excluded: 1278sqft

#		Dimensions	sqft	Counted as living area
1	Hall	6'5" x 6'7"	51 sq. ft	Yes
2	Storage	9'5" x 12'6"	118 sq. ft	No
3	Room	13'10" x 15'2"	182 sq. ft	Yes
4	Crawl Space	12'8" x 21'6"	273 sq. ft	No
5	Room	4'11" x 5'3"	26 sq. ft	Yes
6	Utility	9'0" x 18'8"	186 sq. ft	No
7	Bath	7'0" x 5'3"	36 sq. ft	Yes
8	Hall	10'7" x 5'5"	58 sq. ft	Yes
9	Basement	32'1" x 23'9"	677 sq. ft	No

Home data report

1874 Main Road, Tiverton, Newport County, Rhode Island, United States, 02878



Room dimensions

Floor 2

Total:1707sqft Excluded: 402sqft

#		Dimensions	sqft	Counted as living area
10	Sun Room	12'2" x 22'3"	285 sq. ft	Yes
11	Living Room	16'10" x 26'2"	441 sq. ft	Yes
12	Hall	4'9" x 4'1"	17 sq. ft	Yes
13	Breakfast Nook	6'4" x 5'4"	34 sq. ft	Yes
14	Hall	2'9" x 2'10"	8 sq. ft	Yes
15	Foyer	7'1" x 3'9"	27 sq. ft	Yes
16	Laundry	9'5" x 6'0"	56 sq. ft	Yes
17	Entry	3'7" x 6'5"	31 sq. ft	Yes
18	Dining Room	17'7" x 13'4"	234 sq. ft	Yes
19	Entry	7'2" x 5'2"	37 sq. ft	Yes
20	Kitchen	17'7" x 16'3"	223 sq. ft	Yes

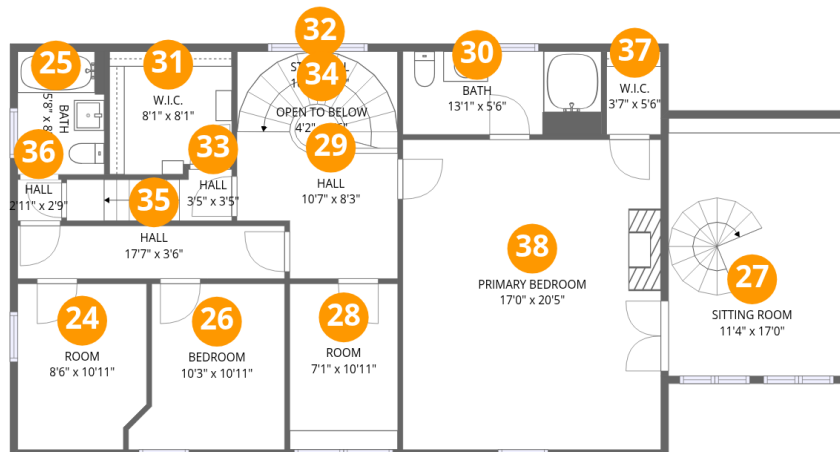
Home data report

**1874 Main Road, Tiverton, Newport County, Rhode Island,
United States, 02878**

#		Dimensions	sqft	Counted as living area
21	Bath	12'2" x 7'1"	66 sq. ft	Yes
22	Hall	7'1" x 18'4"	164 sq. ft	Yes
23	Garage	21'2" x 18'11"	402 sq. ft	No

Home data report

1874 Main Road, Tiverton, Newport County, Rhode Island, United States, 02878



Room dimensions

Floor 3

Total:1248sqft Excluded: 63sqft

#		Dimensions	sqft	Counted as living area
24	Room	8'6" x 10'11"	89 sq. ft	Yes
25	Bath	5'8" x 8'1"	46 sq. ft	Yes
26	Bedroom	10'3" x 10'11"	99 sq. ft	Yes
27	Sitting Room	11'4" x 17'0"	193 sq. ft	Yes
28	Room	7'1" x 10'11"	78 sq. ft	Yes
29	Hall	10'7" x 8'3"	82 sq. ft	Yes
30	Bath	13'1" x 5'6"	72 sq. ft	Yes
31	W.I.C.	8'1" x 8'1"	63 sq. ft	Yes
32	Stairwell	10'7" x 5'3"	56 sq. ft	No
33	Hall	3'5" x 3'5"	31 sq. ft	Yes
34	Open To Below	4'2" x 2'6"	7 sq. ft	Yes

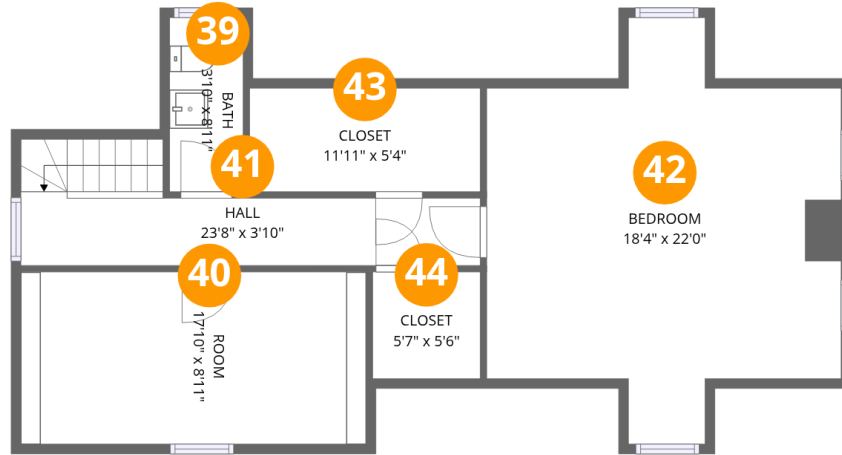
Home data report

**1874 Main Road, Tiverton, Newport County, Rhode Island,
United States, 02878**

#		Dimensions	sqft	Counted as living area
35	Hall	17'7" x 3'6"	61 sq. ft	Yes
36	Hall	2'11" x 2'9"	8 sq. ft	Yes
37	W.I.C.	3'7" x 5'6"	20 sq. ft	Yes
38	Primary Bedroom	17'0" x 20'5"	347 sq. ft	Yes

Home data report

1874 Main Road, Tiverton, Newport County, Rhode Island,
United States, 02878



Room dimensions

Floor 4

Total:491sqft

Excluded: 225sqft

#		Dimensions	sqft	Counted as living area
39	Bath	3'10" x 8'11"	34 sq. ft	Yes
40	Room	17'10" x 8'11"	51 sq. ft	Yes
41	Hall	23'8" x 3'10"	105 sq. ft	Yes
42	Bedroom	18'4" x 22'0"	184 sq. ft	Yes
43	Closet	11'11" x 5'4"	64 sq. ft	Yes
44	Closet	5'7" x 5'6"	31 sq. ft	Yes

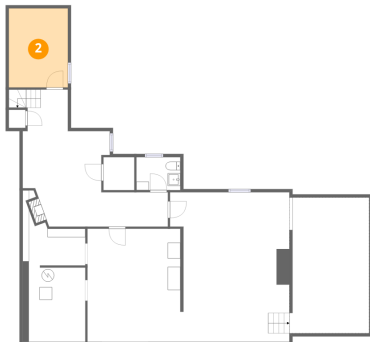
1 Floor 1 - Hall



Dimensions: 6'5" x 6'7"
Area: 51 sq. ft
Counted as living area: Yes

Heated: Yes
Finished: Yes
Enclosed: Yes
Contiguous: Yes
Permitted: Yes
Wet space: No
Addition: No
Conversion: No

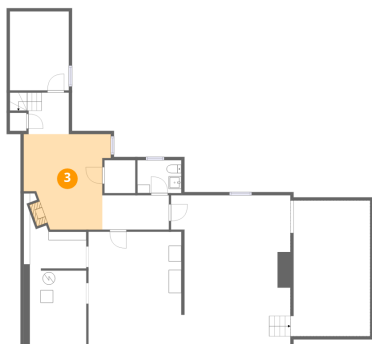
2 Floor 1 - Storage



Dimensions: 9'5" x 12'6"
Area: 118 sq. ft
Counted as living area: No

Heated: No
Finished: No
Enclosed: No
Contiguous: Yes
Permitted: Yes
Wet space: No
Addition: No
Conversion: No

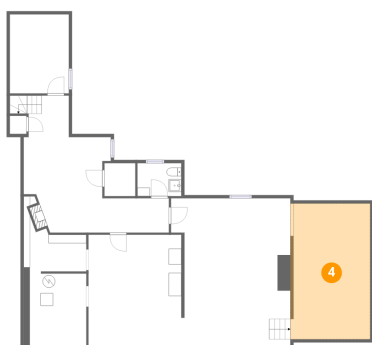
3 Floor 1 - Room



Dimensions: 13'10" x 15'2"
Area: 182 sq. ft
Counted as living area: Yes

Heated: Yes
Finished: Yes
Enclosed: Yes
Contiguous: Yes
Permitted: Yes
Wet space: No
Addition: No
Conversion: No

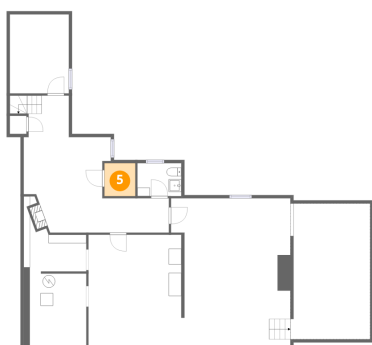
4 Floor 1 - Crawl Space



Dimensions: 12'8" x 21'6"
Area: 273 sq. ft
Counted as living area: No

Heated: No
Finished: No
Enclosed: No
Contiguous: Yes
Permitted: No
Wet space: No
Addition: No
Conversion: No

5 Floor 1 - Room



Dimensions: 4'11" x 5'3"
Area: 26 sq. ft
Counted as living area: Yes

Heated: Yes
Finished: Yes
Enclosed: Yes
Contiguous: Yes
Permitted: Yes
Wet space: No
Addition: No
Conversion: No

6 Floor 1 - Utility



Dimensions: 9'0" x 18'8"
Area: 186 sq. ft
Counted as living area: No

Heated: Yes
Finished: No
Enclosed: Yes
Contiguous: Yes
Permitted: Yes
Wet space: No
Addition: No
Conversion: No

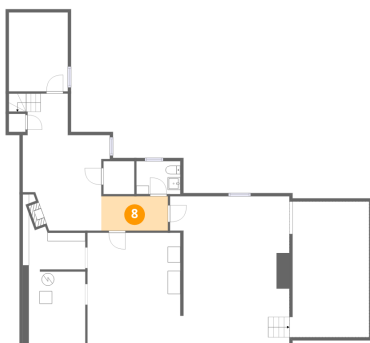
7 Floor 1 - Bath



Dimensions: 7'0" x 5'3"
Area: 36 sq. ft
Counted as living area: Yes

Heated: Yes
Finished: Yes
Enclosed: Yes
Contiguous: Yes
Permitted: Yes
Wet space: Yes
Addition: No
Conversion: No

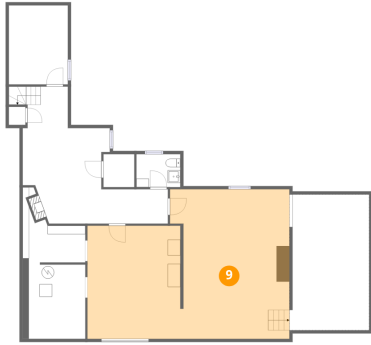
8 Floor 1 - Hall



Dimensions: 10'7" x 5'5"
Area: 58 sq. ft
Counted as living area: Yes

Heated: Yes
Finished: Yes
Enclosed: Yes
Contiguous: Yes
Permitted: Yes
Wet space: No
Addition: No
Conversion: No

9 Floor 1 - Basement



Dimensions: 32'1" x 23'9"
Area: 677 sq. ft
Counted as living area: No

Heated: Yes
Finished: No
Enclosed: Yes
Contiguous: Yes
Permitted: Yes
Wet space: No
Addition: No
Conversion: No

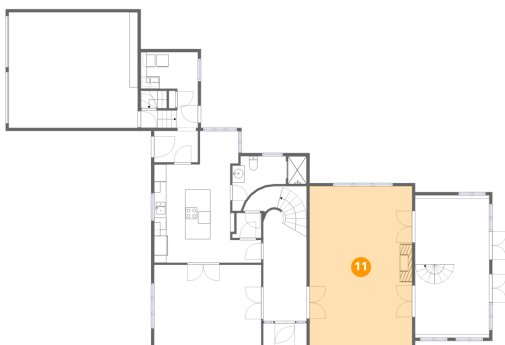
10 Floor 2 - Sun Room



Dimensions: 12'2" x 22'3"
Area: 285 sq. ft
Counted as living area: Yes

Heated: Yes
Finished: Yes
Enclosed: Yes
Contiguous: Yes
Permitted: Yes
Wet space: No
Addition: No
Conversion: No

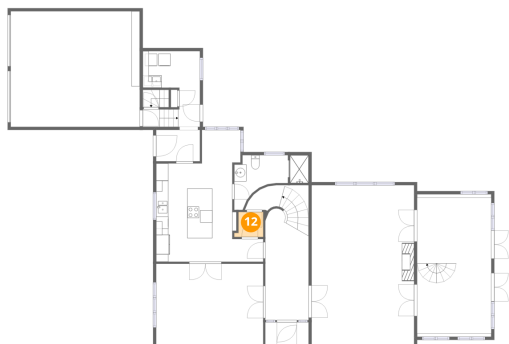
11 Floor 2 - Living Room



Dimensions: 16'10" x 26'2"
Area: 441 sq. ft
Counted as living area: Yes

Heated: Yes
Finished: Yes
Enclosed: Yes
Contiguous: Yes
Permitted: Yes
Wet space: No
Addition: No
Conversion: No

12 Floor 2 - Hall



Dimensions: 4'9" x 4'1"
Area: 17 sq. ft
Counted as living area: Yes

Heated: Yes
Finished: Yes
Enclosed: Yes
Contiguous: Yes
Permitted: Yes
Wet space: No
Addition: No
Conversion: No

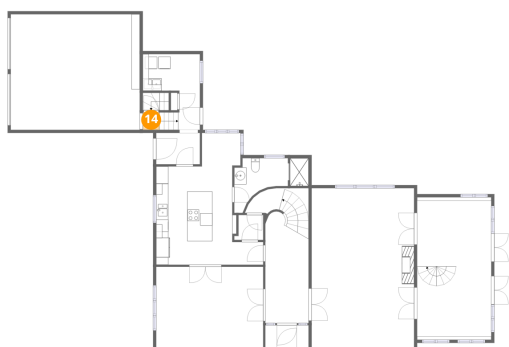
13 Floor 2 - Breakfast Nook



Dimensions: 6'4" x 5'4"
Area: 34 sq. ft
Counted as living area: Yes

Heated: Yes
Finished: Yes
Enclosed: Yes
Contiguous: Yes
Permitted: Yes
Wet space: No
Addition: No
Conversion: No

14 Floor 2 - Hall



Dimensions: 2'9" x 2'10"
Area: 8 sq. ft
Counted as living area: Yes

Heated: Yes
Finished: Yes
Enclosed: Yes
Contiguous: Yes
Permitted: Yes
Wet space: No
Addition: No
Conversion: No

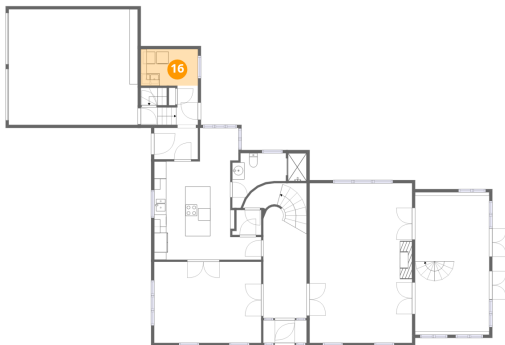
15 Floor 2 - Foyer



Dimensions: 7'1" x 3'9"
Area: 27 sq. ft
Counted as living area: Yes

Heated: Yes
Finished: Yes
Enclosed: Yes
Contiguous: Yes
Permitted: Yes
Wet space: No
Addition: No
Conversion: No

16 Floor 2 - Laundry



Dimensions: 9'5" x 6'0"
Area: 56 sq. ft
Counted as living area: Yes

Heated: Yes
Finished: Yes
Enclosed: Yes
Contiguous: Yes
Permitted: Yes
Wet space: No
Addition: No
Conversion: No

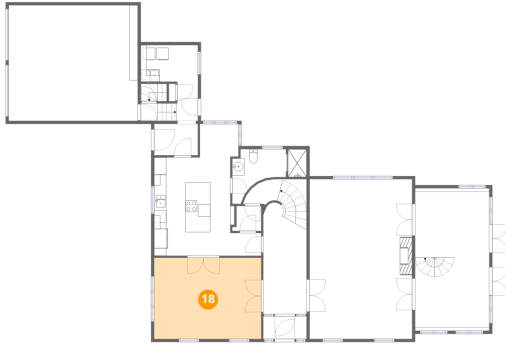
17 Floor 2 - Entry



Dimensions: 3'7" x 6'5"
Area: 31 sq. ft
Counted as living area: Yes

Heated: Yes
Finished: Yes
Enclosed: Yes
Contiguous: Yes
Permitted: Yes
Wet space: No
Addition: No
Conversion: No

18 Floor 2 - Dining Room



Dimensions: 17'7" x 13'4"
Area: 234 sq. ft
Counted as living area: Yes

Heated: Yes
Finished: Yes
Enclosed: Yes
Contiguous: Yes
Permitted: Yes
Wet space: No
Addition: No
Conversion: No

19 Floor 2 - Entry



Dimensions: 7'2" x 5'2"
Area: 37 sq. ft
Counted as living area: Yes

Heated: Yes
Finished: Yes
Enclosed: Yes
Contiguous: Yes
Permitted: Yes
Wet space: No
Addition: No
Conversion: No

20 Floor 2 - Kitchen



Dimensions: 17'7" x 16'3"
Area: 223 sq. ft
Counted as living area: Yes

Heated: Yes
Finished: Yes
Enclosed: Yes
Contiguous: Yes
Permitted: Yes
Wet space: No
Addition: No
Conversion: No

21 Floor 2 - Bath



Dimensions: 12'2" x 7'1"
Area: 66 sq. ft
Counted as living area: Yes

Heated: Yes
Finished: Yes
Enclosed: Yes
Contiguous: Yes
Permitted: Yes
Wet space: Yes
Addition: No
Conversion: No

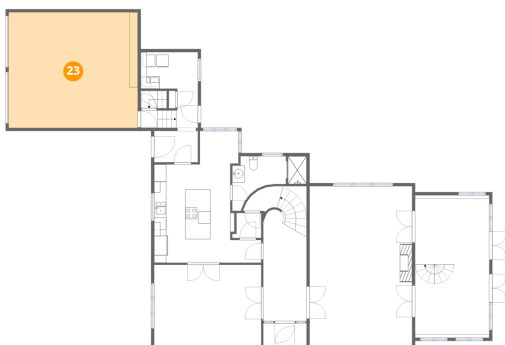
22 Floor 2 - Hall



Dimensions: 7'1" x 18'4"
Area: 164 sq. ft
Counted as living area: Yes

Heated: Yes
Finished: Yes
Enclosed: Yes
Contiguous: Yes
Permitted: Yes
Wet space: No
Addition: No
Conversion: No

23 Floor 2 - Garage



Dimensions: 21'2" x 18'11"
Area: 402 sq. ft
Counted as living area: No

Heated: No
Finished: No
Enclosed: Yes
Contiguous: Yes
Permitted: Yes
Wet space: No
Addition: No
Conversion: No

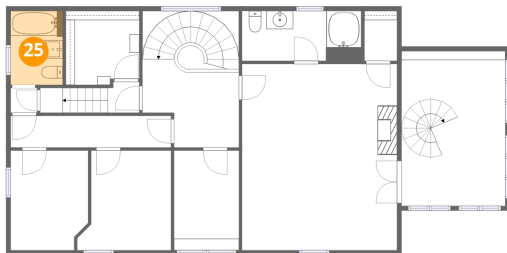
24 Floor 3 - Room



Dimensions: 8'6" x 10'11"
Area: 89 sq. ft
Counted as living area: Yes

Heated: Yes
Finished: Yes
Enclosed: Yes
Contiguous: Yes
Permitted: Yes
Wet space: No
Addition: No
Conversion: No

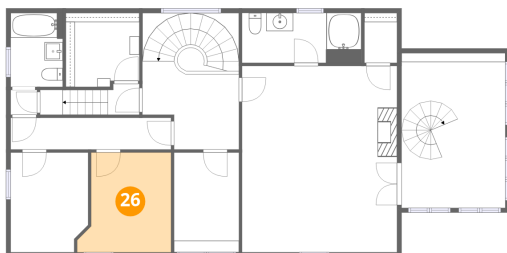
25 Floor 3 - Bath



Dimensions: 5'8" x 8'1"
Area: 46 sq. ft
Counted as living area: Yes

Heated: Yes
Finished: Yes
Enclosed: Yes
Contiguous: Yes
Permitted: Yes
Wet space: Yes
Addition: No
Conversion: No

26 Floor 3 - Bedroom



Dimensions: 10'3" x 10'11"
Area: 99 sq. ft
Counted as living area: Yes

Heated: Yes
Finished: Yes
Enclosed: Yes
Contiguous: Yes
Permitted: Yes
Wet space: No
Addition: No
Conversion: No

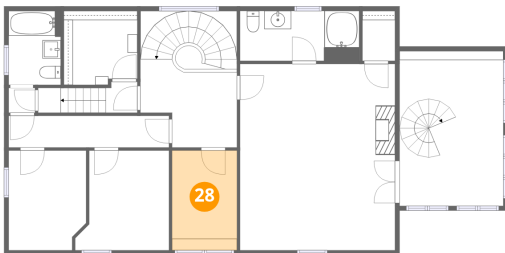
27 Floor 3 - Sitting Room



Dimensions: 11'4" x 17'0"
Area: 193 sq. ft
Counted as living area: Yes

Heated: Yes
Finished: Yes
Enclosed: Yes
Contiguous: Yes
Permitted: Yes
Wet space: No
Addition: No
Conversion: No

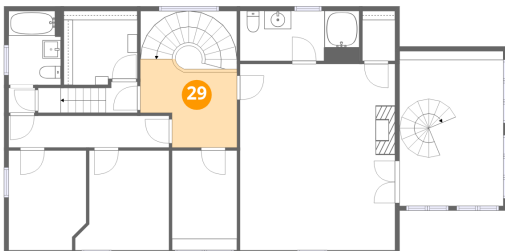
28 Floor 3 - Room



Dimensions: 7'1" x 10'11"
Area: 78 sq. ft
Counted as living area: Yes

Heated: Yes
Finished: Yes
Enclosed: Yes
Contiguous: Yes
Permitted: Yes
Wet space: No
Addition: No
Conversion: No

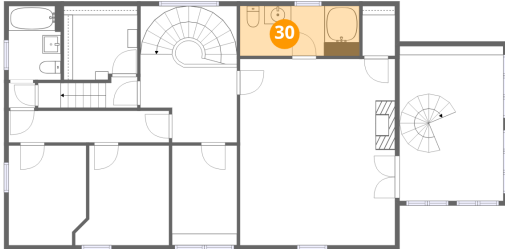
29 Floor 3 - Hall



Dimensions: 10'7" x 8'3"
Area: 82 sq. ft
Counted as living area: Yes

Heated: Yes
Finished: Yes
Enclosed: Yes
Contiguous: Yes
Permitted: Yes
Wet space: No
Addition: No
Conversion: No

30 Floor 3 - Bath



Dimensions: 13'1" x 5'6"
Area: 72 sq. ft
Counted as living area: Yes

Heated: Yes
Finished: Yes
Enclosed: Yes
Contiguous: Yes
Permitted: Yes
Wet space: Yes
Addition: No
Conversion: No

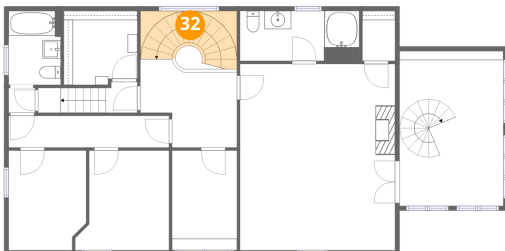
31 Floor 3 - W.I.C.



Dimensions: 8'1" x 8'1"
Area: 63 sq. ft
Counted as living area: Yes

Heated: Yes
Finished: Yes
Enclosed: Yes
Contiguous: Yes
Permitted: Yes
Wet space: No
Addition: No
Conversion: No

32 Floor 3 - Stairwell



Dimensions: 10'7" x 5'3"
Area: 56 sq. ft
Counted as living area: No

Heated: No
Finished: No
Enclosed: No
Contiguous: Yes
Permitted: No
Wet space: No
Addition: No
Conversion: No

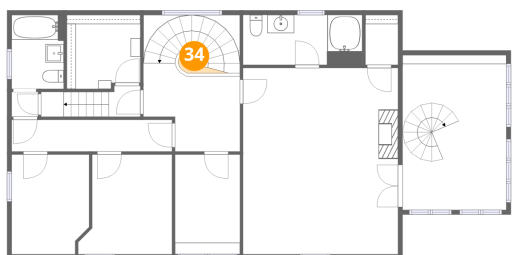
33 Floor 3 - Hall



Dimensions: 3'5" x 3'5"
Area: 31 sq. ft
Counted as living area: Yes

Heated: Yes
Finished: Yes
Enclosed: Yes
Contiguous: Yes
Permitted: Yes
Wet space: No
Addition: No
Conversion: No

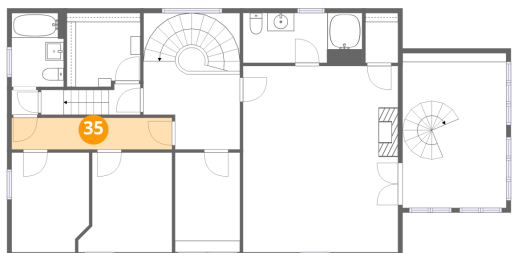
34 Floor 3 - Open To Below



Dimensions: 4'2" x 2'6"
Area: 7 sq. ft
Counted as living area: Yes

Heated: No
Finished: No
Enclosed: No
Contiguous: Yes
Permitted: No
Wet space: No
Addition: No
Conversion: No

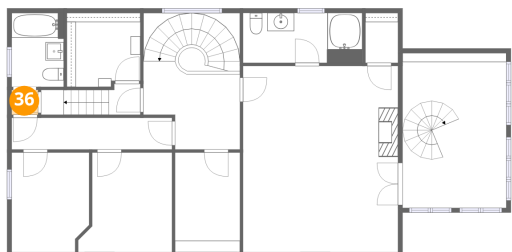
35 Floor 3 - Hall



Dimensions: 17'7" x 3'6"
Area: 61 sq. ft
Counted as living area: Yes

Heated: Yes
Finished: Yes
Enclosed: Yes
Contiguous: Yes
Permitted: Yes
Wet space: No
Addition: No
Conversion: No

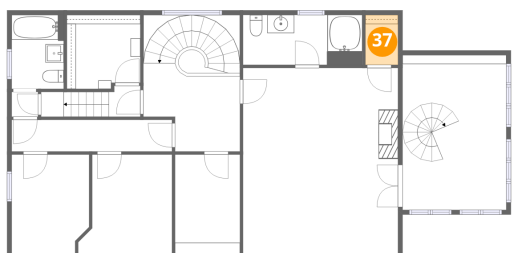
36 Floor 3 - Hall



Dimensions: 2'11" x 2'9"
Area: 8 sq. ft
Counted as living area: Yes

Heated: Yes
Finished: Yes
Enclosed: Yes
Contiguous: Yes
Permitted: Yes
Wet space: No
Addition: No
Conversion: No

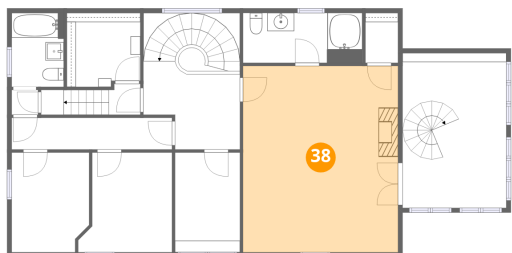
37 Floor 3 - W.I.C.



Dimensions: 3'7" x 5'6"
Area: 20 sq. ft
Counted as living area: Yes

Heated: Yes
Finished: Yes
Enclosed: Yes
Contiguous: Yes
Permitted: Yes
Wet space: No
Addition: No
Conversion: No

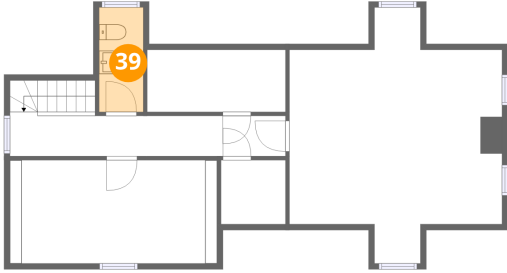
38 Floor 3 - Primary Bedroom



Dimensions: 17'0" x 20'5"
Area: 347 sq. ft
Counted as living area: Yes

Heated: Yes
Finished: Yes
Enclosed: Yes
Contiguous: Yes
Permitted: Yes
Wet space: No
Addition: No
Conversion: No

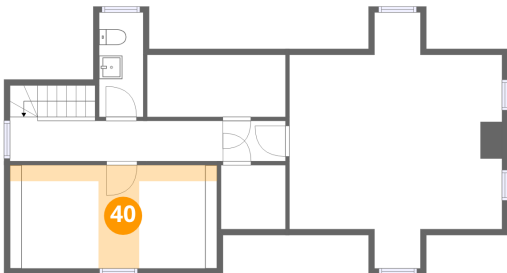
39 Floor 4 - Bath



Dimensions: 3'10" x 8'11"
Area: 34 sq. ft
Counted as living area: Yes

Heated: Yes
Finished: Yes
Enclosed: Yes
Contiguous: Yes
Permitted: Yes
Wet space: No
Addition: No
Conversion: No

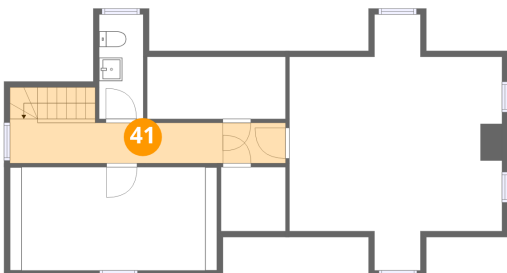
40 Floor 4 - Room



Dimensions: 17'10" x 8'11"
Area: 51 sq. ft
Counted as living area: Yes

Heated: Yes
Finished: Yes
Enclosed: Yes
Contiguous: Yes
Permitted: Yes
Wet space: No
Addition: No
Conversion: No

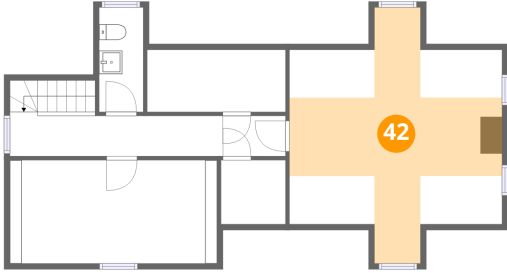
41 Floor 4 - Hall



Dimensions: 23'8" x 3'10"
Area: 105 sq. ft
Counted as living area: Yes

Heated: Yes
Finished: Yes
Enclosed: Yes
Contiguous: Yes
Permitted: Yes
Wet space: No
Addition: No
Conversion: No

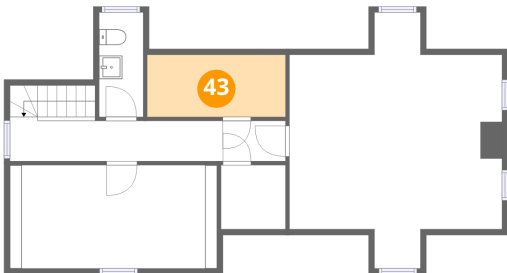
42 Floor 4 - Bedroom



Dimensions: 18'4" x 22'0"
Area: 184 sq. ft
Counted as living area: Yes

Heated: Yes
Finished: Yes
Enclosed: Yes
Contiguous: Yes
Permitted: Yes
Wet space: No
Addition: No
Conversion: No

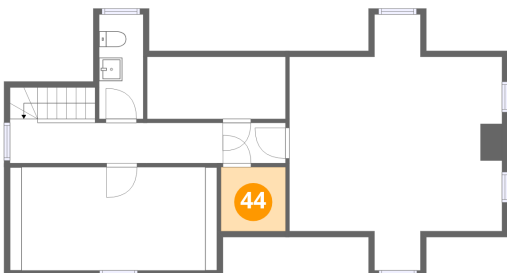
43 Floor 4 - Closet



Dimensions: 11'11" x 5'4"
Area: 64 sq. ft
Counted as living area: Yes

Heated: Yes
Finished: Yes
Enclosed: Yes
Contiguous: Yes
Permitted: Yes
Wet space: No
Addition: No
Conversion: No

44 Floor 4 - Closet



Dimensions: 5'7" x 5'6"
Area: 31 sq. ft
Counted as living area: Yes

Heated: Yes
Finished: Yes
Enclosed: Yes
Contiguous: Yes
Permitted: Yes
Wet space: No
Addition: No
Conversion: No