

Home data report

3659 Peakwood Drive Southwest, South Roanoke, Roanoke,  
Roanoke city, Virginia, United States, 24014



**Total Area: 3465 sq. ft**  
1st Floor: 648 sq. ft, 2nd Floor: 1950 sq. ft, 3rd Floor: 867 sq. ft  
Excluded: Undefined 22 sq. ft, Covered patio 873 sq. ft, Patio 194 sq. ft, Storage 424 sq. ft, Screened porch 107 sq. ft, Porch 195 sq. ft, Deck 488 sq. ft, Walls: 262 sq. ft

Property summary

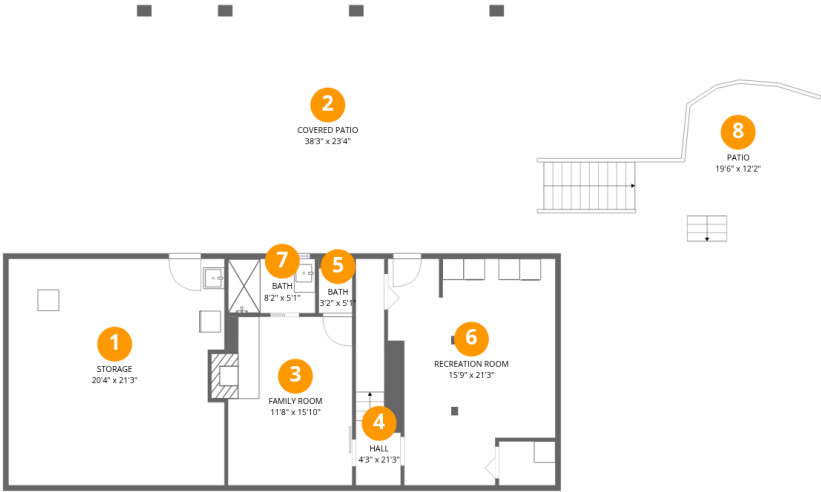
 **3** Floors

 **4** Bedrooms

 **3** Bathrooms

 **2** Half baths

3659 Peakwood Drive Southwest, South Roanoke, Roanoke,  
Roanoke city, Virginia, United States, 24014

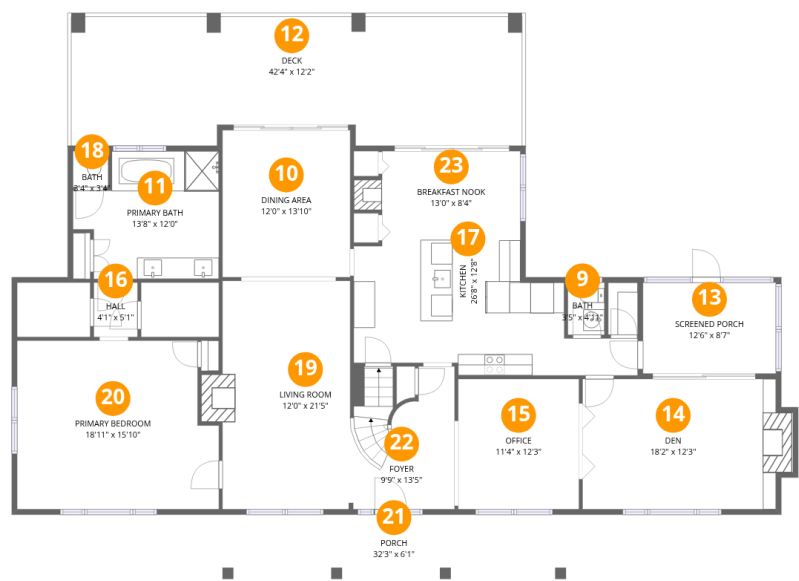


Room dimensions

Floor 1 Total:648sqft Excluded: 1513sqft

#		Dimensions	sqft	Counted as living area
1	Storage	20'4" x 21'3"	424 sq. ft	No
2	Covered Patio	38'3" x 23'4"	873 sq. ft	No
3	Family Room	11'8" x 15'10"	192 sq. ft	Yes
4	Hall	4'3" x 21'3"	65 sq. ft	Yes
5	Bath	3'2" x 5'1"	16 sq. ft	Yes
6	Recreation Room	15'9" x 21'3"	288 sq. ft	Yes
7	Bath	8'2" x 5'1"	42 sq. ft	Yes
8	Patio	19'6" x 12'2"	194 sq. ft	No

3659 Peakwood Drive Southwest, South Roanoke, Roanoke,  
Roanoke city, Virginia, United States, 24014



Room dimensions

Floor 2 Total:1950sqft    Excluded: 790sqft

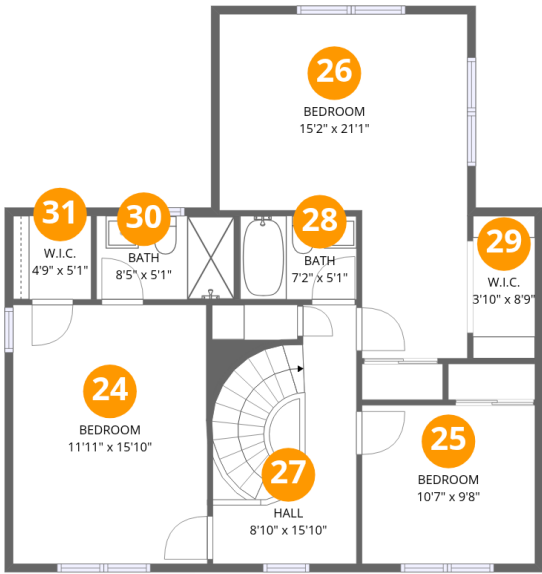
#		Dimensions	sqft	Counted as living area
9	Bath	3'5" x 4'11"	17 sq. ft	Yes
10	Dining Area	12'0" x 13'10"	166 sq. ft	Yes
11	Primary Bath	13'8" x 12'0"	142 sq. ft	Yes
12	Deck	42'4" x 12'2"	488 sq. ft	No
13	Screened Porch	12'6" x 8'7"	107 sq. ft	No
14	Den	18'2" x 12'3"	231 sq. ft	Yes
15	Office	11'4" x 12'3"	139 sq. ft	Yes
16	Hall	4'1" x 5'1"	21 sq. ft	Yes
17	Kitchen	26'8" x 12'8"	246 sq. ft	Yes
18	Bath	3'4" x 3'4"	11 sq. ft	Yes
19	Living Room	12'0" x 21'5"	266 sq. ft	Yes

Home data report

3659 Peakwood Drive Southwest, South Roanoke, Roanoke,  
Roanoke city, Virginia, United States, 24014

#		Dimensions	sqft	Counted as living area
20	Primary Bedroom	18'11" x 15'10"	284 sq. ft	Yes
21	Porch	32'3" x 6'1"	195 sq. ft	No
22	Foyer	9'9" x 13'5"	121 sq. ft	Yes
23	Breakfast Nook	13'0" x 8'4"	116 sq. ft	Yes

3659 Peakwood Drive Southwest, South Roanoke, Roanoke,  
Roanoke city, Virginia, United States, 24014



Room dimensions

Floor 3 Total:867sqft Excluded: 0sqft

#		Dimensions	sqft	Counted as living area
24	Bedroom	11'11" x 15'10"	188 sq. ft	Yes
25	Bedroom	10'7" x 9'8"	103 sq. ft	Yes
26	Bedroom	15'2" x 21'1"	241 sq. ft	Yes
27	Hall	8'10" x 15'10"	121 sq. ft	Yes
28	Bath	7'2" x 5'1"	37 sq. ft	Yes
29	W.I.C.	3'10" x 8'9"	33 sq. ft	Yes
30	Bath	8'5" x 5'1"	43 sq. ft	Yes
31	W.I.C.	4'9" x 5'1"	24 sq. ft	Yes

3659 Peakwood Drive Southwest, South Roanoke, Roanoke,  
Roanoke city, Virginia, United States, 24014

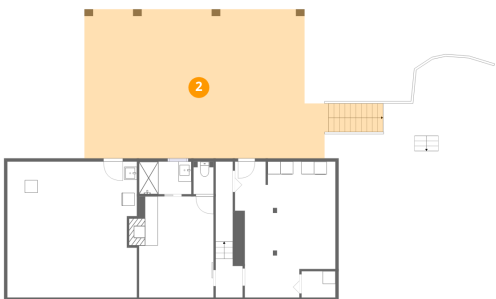
1 Floor 1 - Storage



Dimensions: 20'4" x 21'3"  
Area: 424 sq. ft  
Counted as living area: No

Heated: No  
Finished: No  
Enclosed: No  
Contiguous: Yes  
Permitted: Yes  
Wet space: No  
Addition: No  
Conversion: No

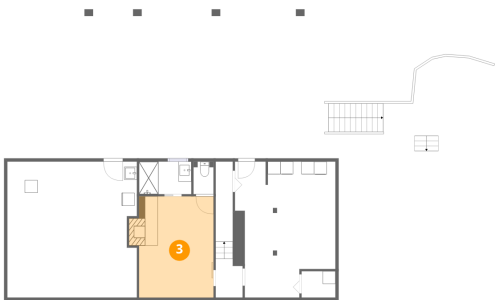
2 Floor 1 - Covered Patio



Dimensions: 38'3" x 23'4"  
Area: 873 sq. ft  
Counted as living area: No

Heated: No  
Finished: No  
Enclosed: No  
Contiguous: Yes  
Permitted: Yes  
Wet space: No  
Addition: No  
Conversion: No

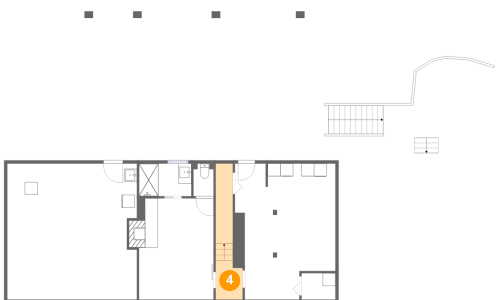
3 Floor 1 - Family Room



Dimensions: 11'8" x 15'10"  
Area: 192 sq. ft  
Counted as living area: Yes

Heated: Yes  
Finished: Yes  
Enclosed: Yes  
Contiguous: Yes  
Permitted: Yes  
Wet space: No  
Addition: No  
Conversion: No

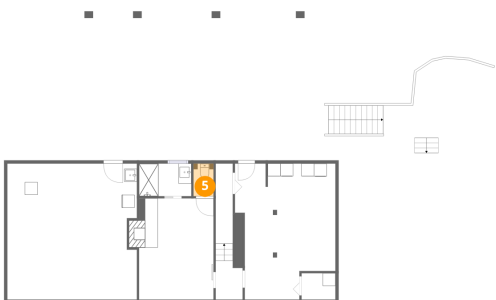
4 Floor 1 - Hall



Dimensions: 4'3" x 21'3"  
Area: 65 sq. ft  
Counted as living area: Yes

Heated: Yes  
Finished: Yes  
Enclosed: Yes  
Contiguous: Yes  
Permitted: Yes  
Wet space: No  
Addition: No  
Conversion: No

5 Floor 1 - Bath



Dimensions: 3'2" x 5'1"  
Area: 16 sq. ft  
Counted as living area: Yes

Heated: Yes  
Finished: Yes  
Enclosed: Yes  
Contiguous: Yes  
Permitted: Yes  
Wet space: Yes  
Addition: No  
Conversion: No

6 Floor 1 - Recreation Room



Dimensions: 15'9" x 21'3"  
Area: 288 sq. ft  
Counted as living area: Yes

Heated: Yes  
Finished: Yes  
Enclosed: Yes  
Contiguous: Yes  
Permitted: Yes  
Wet space: No  
Addition: No  
Conversion: No

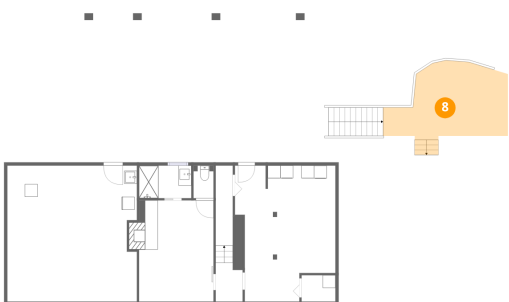
7 Floor 1 - Bath



Dimensions: 8'2" x 5'1"  
Area: 42 sq. ft  
Counted as living area: Yes

Heated: Yes  
Finished: Yes  
Enclosed: Yes  
Contiguous: Yes  
Permitted: Yes  
Wet space: Yes  
Addition: No  
Conversion: No

8 Floor 1 - Patio



Dimensions: 19'6" x 12'2"  
Area: 194 sq. ft  
Counted as living area: No

Heated: No  
Finished: No  
Enclosed: No  
Contiguous: Yes  
Permitted: Yes  
Wet space: No  
Addition: No  
Conversion: No



3659 Peakwood Drive Southwest, South Roanoke, Roanoke,  
Roanoke city, Virginia, United States, 24014

## 9 Floor 2 - Bath



Dimensions: 3'5" x 4'11"  
Area: 17 sq. ft  
Counted as living area: Yes

Heated: Yes  
Finished: Yes  
Enclosed: Yes  
Contiguous: Yes  
Permitted: Yes  
Wet space: Yes  
Addition: No  
Conversion: No

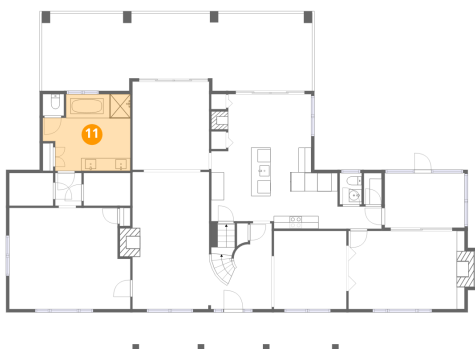
## 10 Floor 2 - Dining Area



Dimensions: 12'0" x 13'10"  
Area: 166 sq. ft  
Counted as living area: Yes

Heated: Yes  
Finished: Yes  
Enclosed: Yes  
Contiguous: Yes  
Permitted: Yes  
Wet space: No  
Addition: No  
Conversion: No

## 11 Floor 2 - Primary Bath



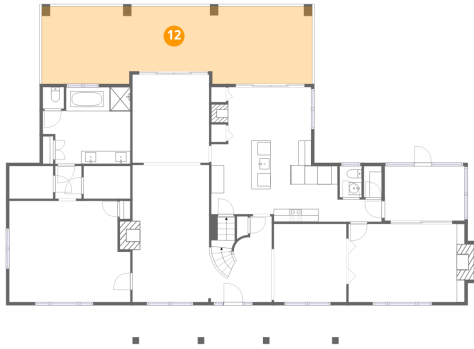
Dimensions: 13'8" x 12'0"  
Area: 142 sq. ft  
Counted as living area: Yes

Heated: Yes  
Finished: Yes  
Enclosed: Yes  
Contiguous: Yes  
Permitted: Yes  
Wet space: Yes  
Addition: No  
Conversion: No

## Home data report

3659 Peakwood Drive Southwest, South Roanoke, Roanoke,  
Roanoke city, Virginia, United States, 24014

### 12 Floor 2 - Deck



Dimensions: 42'4" x 12'2"  
Area: 488 sq. ft  
Counted as living area: No

Heated: No  
Finished: No  
Enclosed: No  
Contiguous: No  
Permitted: Yes  
Wet space: No  
Addition: No  
Conversion: No

### 13 Floor 2 - Screened Porch



Dimensions: 12'6" x 8'7"  
Area: 107 sq. ft  
Counted as living area: No

Heated: No  
Finished: No  
Enclosed: No  
Contiguous: Yes  
Permitted: Yes  
Wet space: No  
Addition: No  
Conversion: No

### 14 Floor 2 - Den



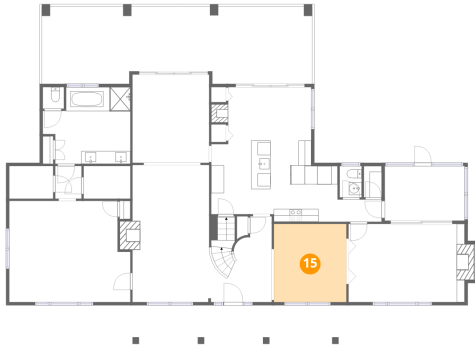
Dimensions: 18'2" x 12'3"  
Area: 231 sq. ft  
Counted as living area: Yes

Heated: Yes  
Finished: Yes  
Enclosed: Yes  
Contiguous: Yes  
Permitted: Yes  
Wet space: No  
Addition: No  
Conversion: No

## Home data report

3659 Peakwood Drive Southwest, South Roanoke, Roanoke,  
Roanoke city, Virginia, United States, 24014

### 15 Floor 2 - Office



Dimensions: 11'4" x 12'3"  
Area: 139 sq. ft  
Counted as living area: Yes

Heated: Yes  
Finished: Yes  
Enclosed: Yes  
Contiguous: Yes  
Permitted: Yes  
Wet space: No  
Addition: No  
Conversion: No

### 16 Floor 2 - Hall



Dimensions: 4'1" x 5'1"  
Area: 21 sq. ft  
Counted as living area: Yes

Heated: Yes  
Finished: Yes  
Enclosed: Yes  
Contiguous: Yes  
Permitted: Yes  
Wet space: No  
Addition: No  
Conversion: No

### 17 Floor 2 - Kitchen



Dimensions: 26'8" x 12'8"  
Area: 246 sq. ft  
Counted as living area: Yes

Heated: Yes  
Finished: Yes  
Enclosed: Yes  
Contiguous: Yes  
Permitted: Yes  
Wet space: No  
Addition: No  
Conversion: No

3659 Peakwood Drive Southwest, South Roanoke, Roanoke,  
Roanoke city, Virginia, United States, 24014

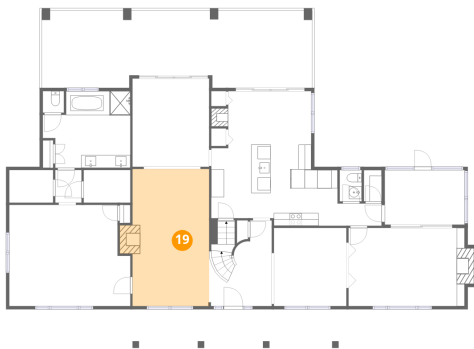
## 18 Floor 2 - Bath



Dimensions: 3'4" x 3'4"  
Area: 11 sq. ft  
Counted as living area: Yes

Heated: Yes  
Finished: Yes  
Enclosed: Yes  
Contiguous: Yes  
Permitted: Yes  
Wet space: Yes  
Addition: No  
Conversion: No

## 19 Floor 2 - Living Room



Dimensions: 12'0" x 21'5"  
Area: 266 sq. ft  
Counted as living area: Yes

Heated: Yes  
Finished: Yes  
Enclosed: Yes  
Contiguous: Yes  
Permitted: Yes  
Wet space: No  
Addition: No  
Conversion: No

## 20 Floor 2 - Primary Bedroom



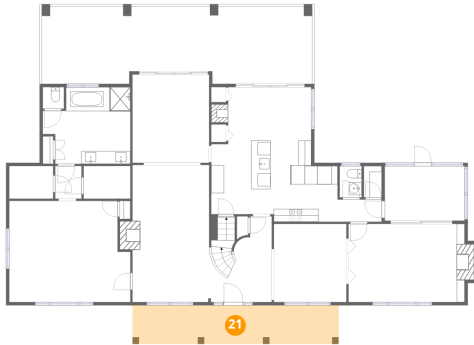
Dimensions: 18'11" x 15'10"  
Area: 284 sq. ft  
Counted as living area: Yes

Heated: Yes  
Finished: Yes  
Enclosed: Yes  
Contiguous: Yes  
Permitted: Yes  
Wet space: No  
Addition: No  
Conversion: No

## Home data report

3659 Peakwood Drive Southwest, South Roanoke, Roanoke,  
Roanoke city, Virginia, United States, 24014

### 21 Floor 2 - Porch



Dimensions: 32'3" x 6'1"  
Area: 195 sq. ft  
Counted as living area: No

Heated: No  
Finished: No  
Enclosed: No  
Contiguous: Yes  
Permitted: Yes  
Wet space: No  
Addition: No  
Conversion: No

### 22 Floor 2 - Foyer



Dimensions: 9'9" x 13'5"  
Area: 121 sq. ft  
Counted as living area: Yes

Heated: Yes  
Finished: Yes  
Enclosed: Yes  
Contiguous: Yes  
Permitted: Yes  
Wet space: No  
Addition: No  
Conversion: No

### 23 Floor 2 - Breakfast Nook

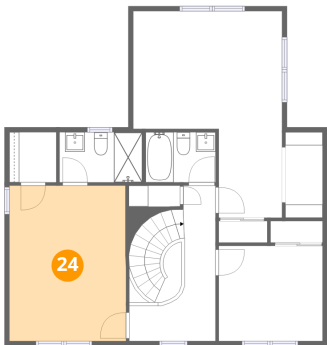


Dimensions: 13'0" x 8'4"  
Area: 116 sq. ft  
Counted as living area: Yes

Heated: Yes  
Finished: Yes  
Enclosed: Yes  
Contiguous: Yes  
Permitted: Yes  
Wet space: No  
Addition: No  
Conversion: No

3659 Peakwood Drive Southwest, South Roanoke, Roanoke,  
Roanoke city, Virginia, United States, 24014

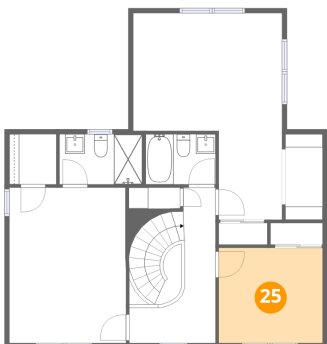
24 Floor 3 - Bedroom



Dimensions: 11'11" x 15'10"  
Area: 188 sq. ft  
Counted as living area: Yes

Heated: Yes  
Finished: Yes  
Enclosed: Yes  
Contiguous: Yes  
Permitted: Yes  
Wet space: No  
Addition: No  
Conversion: No

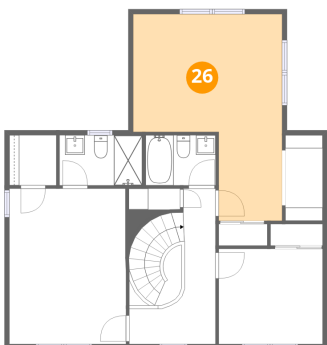
25 Floor 3 - Bedroom



Dimensions: 10'7" x 9'8"  
Area: 103 sq. ft  
Counted as living area: Yes

Heated: Yes  
Finished: Yes  
Enclosed: Yes  
Contiguous: Yes  
Permitted: Yes  
Wet space: No  
Addition: No  
Conversion: No

26 Floor 3 - Bedroom

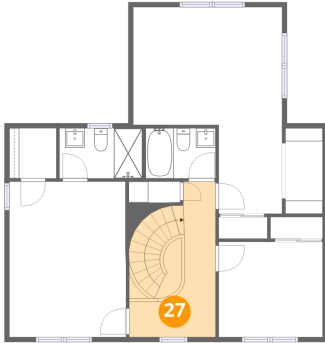


Dimensions: 15'2" x 21'1"  
Area: 241 sq. ft  
Counted as living area: Yes

Heated: Yes  
Finished: Yes  
Enclosed: Yes  
Contiguous: Yes  
Permitted: Yes  
Wet space: No  
Addition: No  
Conversion: No

3659 Peakwood Drive Southwest, South Roanoke, Roanoke,  
Roanoke city, Virginia, United States, 24014

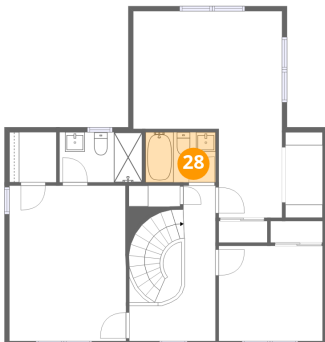
### 27 Floor 3 - Hall



Dimensions: 8'10" x 15'10"  
Area: 121 sq. ft  
Counted as living area: Yes

Heated: Yes  
Finished: Yes  
Enclosed: Yes  
Contiguous: Yes  
Permitted: Yes  
Wet space: No  
Addition: No  
Conversion: No

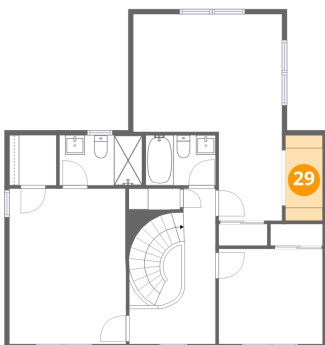
### 28 Floor 3 - Bath



Dimensions: 7'2" x 5'1"  
Area: 37 sq. ft  
Counted as living area: Yes

Heated: Yes  
Finished: Yes  
Enclosed: Yes  
Contiguous: Yes  
Permitted: Yes  
Wet space: Yes  
Addition: No  
Conversion: No

### 29 Floor 3 - W.I.C.

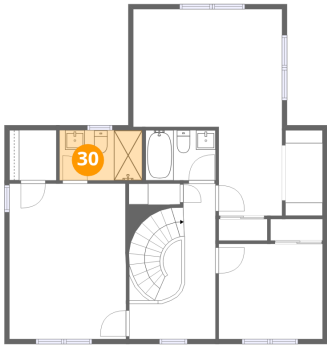


Dimensions: 3'10" x 8'9"  
Area: 33 sq. ft  
Counted as living area: Yes

Heated: Yes  
Finished: Yes  
Enclosed: Yes  
Contiguous: Yes  
Permitted: Yes  
Wet space: No  
Addition: No  
Conversion: No

3659 Peakwood Drive Southwest, South Roanoke, Roanoke,  
Roanoke city, Virginia, United States, 24014

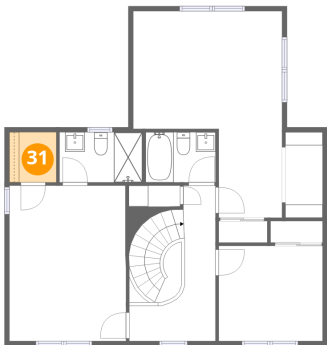
30 Floor 3 - Bath



Dimensions: 8'5" x 5'1"  
Area: 43 sq. ft  
Counted as living area: Yes

Heated: Yes  
Finished: Yes  
Enclosed: Yes  
Contiguous: Yes  
Permitted: Yes  
Wet space: Yes  
Addition: No  
Conversion: No

31 Floor 3 - W.I.C.



Dimensions: 4'9" x 5'1"  
Area: 24 sq. ft  
Counted as living area: Yes

Heated: Yes  
Finished: Yes  
Enclosed: Yes  
Contiguous: Yes  
Permitted: Yes  
Wet space: No  
Addition: No  
Conversion: No