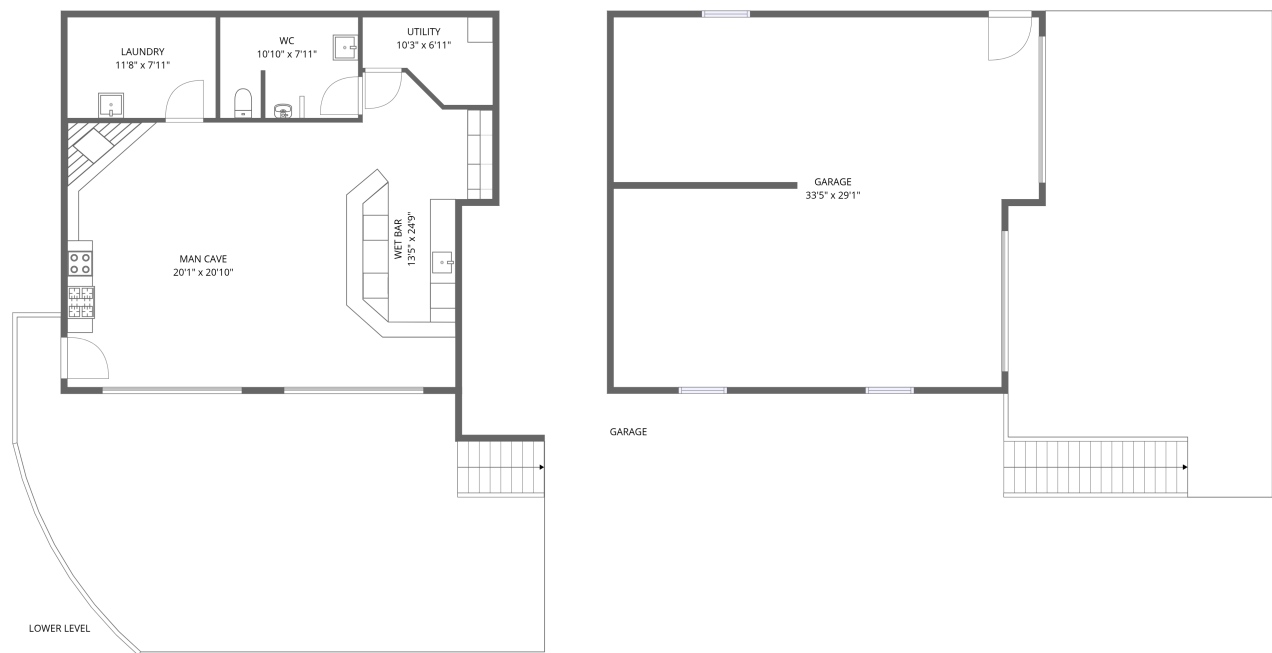


Home report

5440 Ridgelea Estates Drive, Roanoke, Roanoke County,  
Virginia, United States, 24018, Garage



Total Area: 781 sq. ft

Floor 1: 781 sq. ft, Floor 2: 0 sq. ft

Excluded: Laundry 93 sq. ft, Utility 56 sq. ft, Garage 923 sq. ft, Walls: 135 sq. ft

Property summary

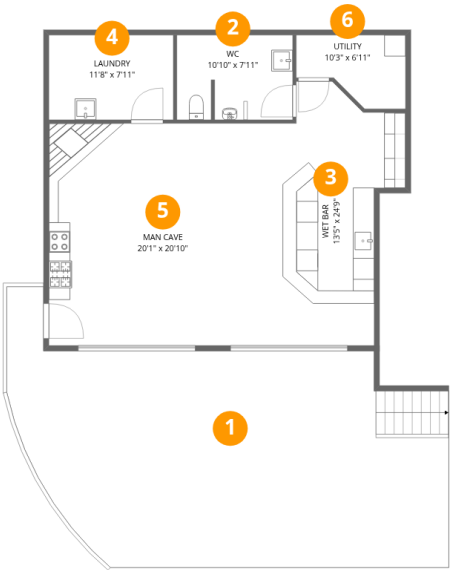
 **2** Floors

 **1** Half baths

 **1** Garages

Home report

5440 Ridgelea Estates Drive, Roanoke, Roanoke County,  
Virginia, United States, 24018, Garage

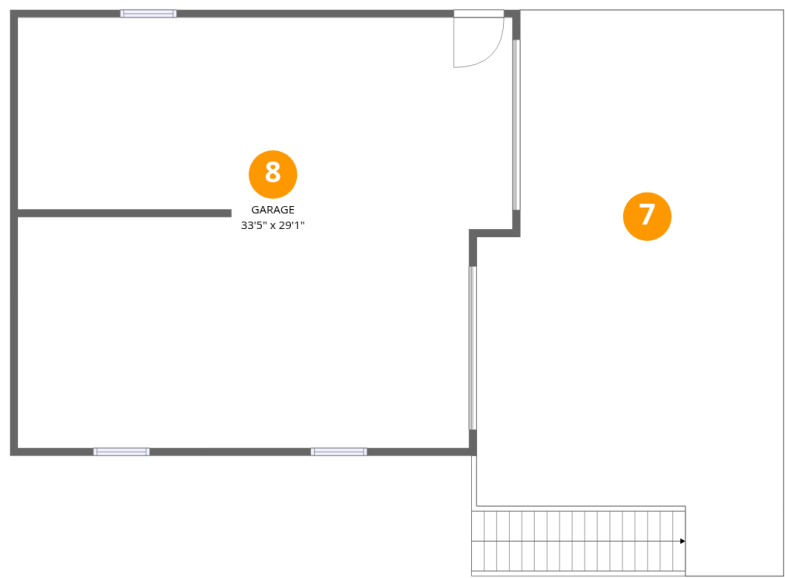


Room dimensions

Floor 1 Total:781sqft    Excluded: 149sqft

#		Max Dimensions	sqft	Included
1	Outdoor	40'0" x 20'4"	777 sq. ft	No
2	WC	10'10" x 7'11"	85 sq. ft	Yes
3	Wet Bar	13'5" x 24'9"	260 sq. ft	Yes
4	Laundry	11'8" x 7'11"	93 sq. ft	No
5	Man Cave	20'1" x 20'10"	418 sq. ft	Yes
6	Utility	10'3" x 6'11"	56 sq. ft	No

5440 Ridgelea Estates Drive, Roanoke, Roanoke County,  
Virginia, United States, 24018, Garage



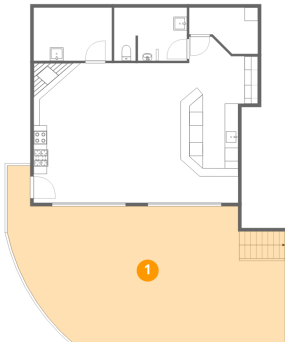
Room dimensions

Floor 2 Total:0sqft   Excluded: 923sqft

#		Max Dimensions	sqft	Included
7	Outdoor	20'9" x 38'3"	683 sq. ft	No
8	Garage	33'5" x 29'1"	923 sq. ft	No

5440 Ridgelea Estates Drive, Roanoke, Roanoke County,  
Virginia, United States, 24018, Garage

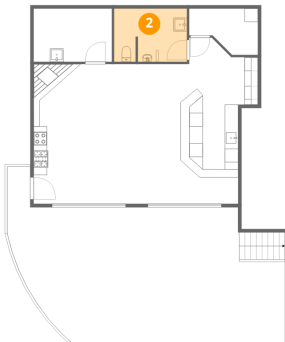
1 Floor 1 - Outdoor



Max Dimensions: 40'0" x 20'4"  
Calculated Area: 777 sq. ft  
Included: No

Heated: No  
Finished: No  
Enclosed: No  
Contiguous: Yes  
Permitted: No  
Wet space: No  
Addition: No  
Conversion: No

2 Floor 1 - WC

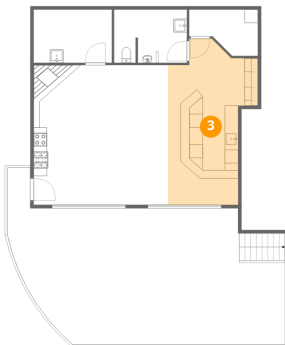


Max Dimensions: 10'10" x 7'11"  
Calculated Area: 85 sq. ft  
Included: Yes

Heated: Yes  
Finished: Yes  
Enclosed: Yes  
Contiguous: Yes  
Permitted: Yes  
Wet space: Yes  
Addition: No  
Conversion: No

5440 Ridgelea Estates Drive, Roanoke, Roanoke County,  
Virginia, United States, 24018, Garage

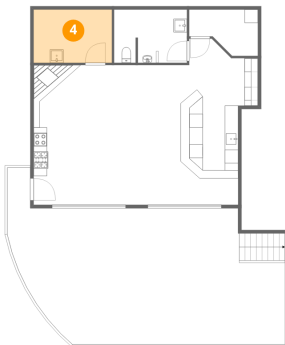
3 Floor 1 - Wet Bar



Max Dimensions: 13'5" x 24'9"  
Calculated Area: 260 sq. ft  
Included: Yes

Heated: Yes  
Finished: Yes  
Enclosed: Yes  
Contiguous: Yes  
Permitted: Yes  
Wet space: No  
Addition: No  
Conversion: No

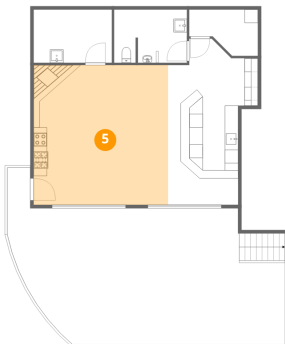
4 Floor 1 - Laundry



Max Dimensions: 11'8" x 7'11"  
Calculated Area: 93 sq. ft  
Included: No

Heated: Yes  
Finished: No  
Enclosed: Yes  
Contiguous: Yes  
Permitted: Yes  
Wet space: No  
Addition: No  
Conversion: No

5 Floor 1 - Man Cave

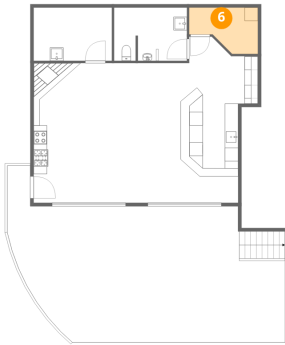


Max Dimensions: 20'1" x 20'10"  
Calculated Area: 418 sq. ft  
Included: Yes

Heated: Yes  
Finished: Yes  
Enclosed: Yes  
Contiguous: Yes  
Permitted: Yes  
Wet space: No  
Addition: No  
Conversion: No

5440 Ridgelea Estates Drive, Roanoke, Roanoke County,  
Virginia, United States, 24018, Garage

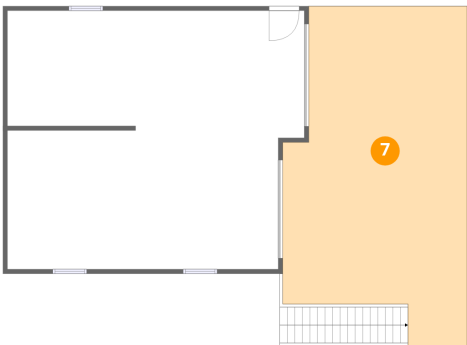
6 Floor 1 - Utility



Max Dimensions: 10'3" x 6'11"  
Calculated Area: 56 sq. ft  
Included: No

Heated: Yes  
Finished: No  
Enclosed: Yes  
Contiguous: Yes  
Permitted: Yes  
Wet space: No  
Addition: No  
Conversion: No

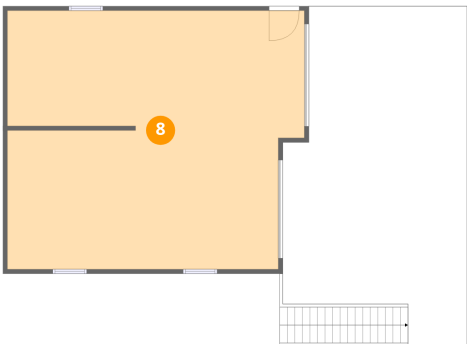
7 Floor 2 - Outdoor



Max Dimensions: 20'9" x 38'3"  
Calculated Area: 683 sq. ft  
Included: No

Heated: No  
Finished: No  
Enclosed: No  
Contiguous: Yes  
Permitted: No  
Wet space: No  
Addition: No  
Conversion: No

8 Floor 2 - Garage



Max Dimensions: 33'5" x 29'1"  
Calculated Area: 923 sq. ft  
Included: No

Heated: No  
Finished: No  
Enclosed: Yes  
Contiguous: Yes  
Permitted: Yes  
Wet space: No  
Addition: No  
Conversion: No