

1215 Pine Forest Dr, Van Wyck, Lancaster, Lancaster County, South Carolina, United States, 29720

Gross Living Area: 2969 sq. ft

Level 1



Space	Area (sq. ft)	Calculation
1st floor (Living area)	2234	Coordinate Polygon Area Algorithm using inches $-((179.1 + 179.1) * (0.3 - 183.8) + (179.1 + 349.2) * (183.8 - 183.8) + (349.2 + 349.2) * (183.8 - 312.9) + (349.2 + 726.4) * (312.9 - 312.9) + (726.4 + 726.4) * (312.9 - 776) + (726.4 + 578.3) * (776 - 776) + (578.3 + 578.3) * (776 - 677.2) + (578.3 + 394.5) * (677.2 - 677.2) + (394.5 + 394.5) * (677.2 - 671.2) + (394.5 + 388.5) * (671.2 - 671.2) + (388.5 + 388.5) * (671.2 - 601.2) + (388.5 + 300.3) * (601.2 - 601.2) + (300.3 + 300.3) * (601.2 - 574.4) + (300.3 + -3.6) * (574.4 - 574.4) + (-3.6 + -3.6) * (574.4 - 0.3) + (-3.6 + 179.1) * (0.3 - 0.3)) * 0.5 * 0.00694$

1215 Pine Forest Dr, Van Wyck, Lancaster, Lancaster County, South Carolina, United States, 29720

Gross Living Area: 2969 sq. ft

Level 1

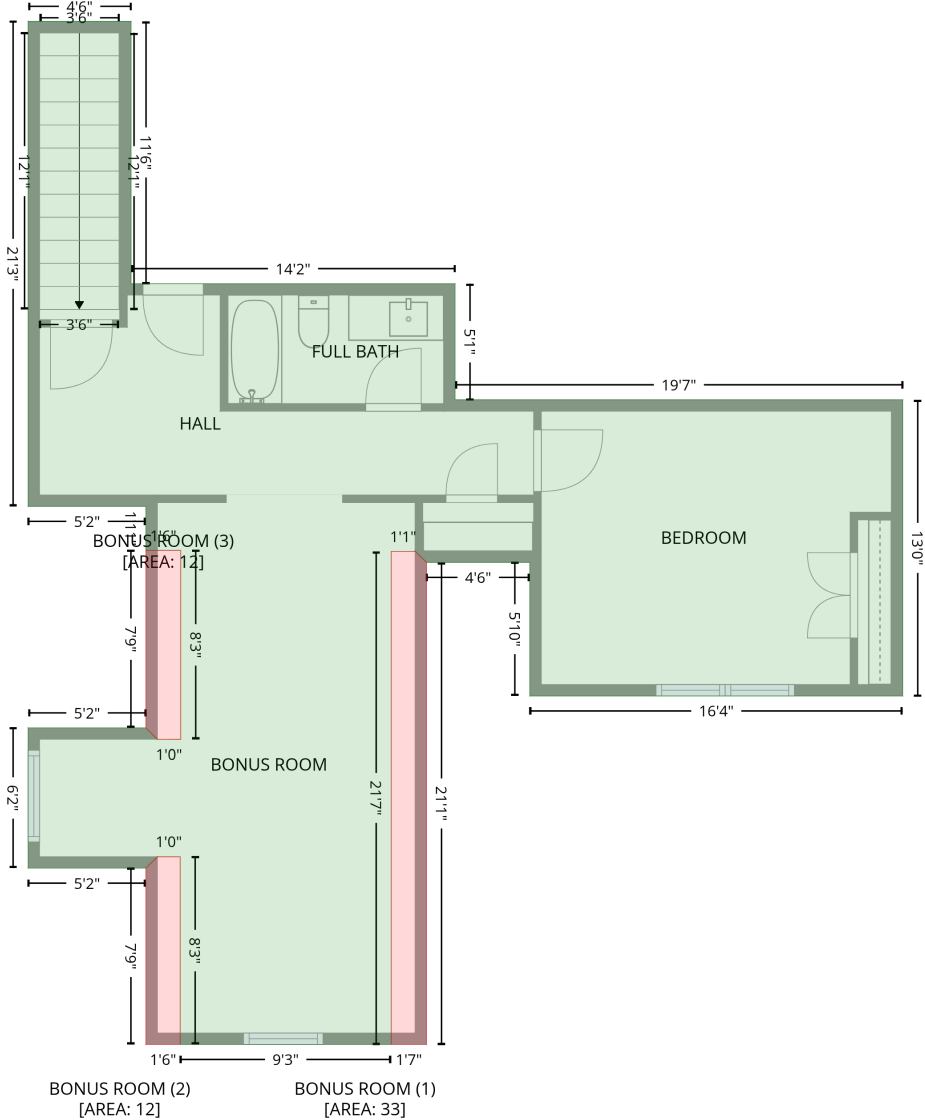
Space	Area (sq. ft)	Calculation <small>Coordinate Polygon Area Algorithm using inches</small>
GARAGE (Non-living area)	580	$-\left((300.3 + 300.3) * (574.4 - 601.2) + (300.3 + 388.5) * (601.2 - 601.2) + (388.5 + 388.5) * (601.2 - 671.2) + (388.5 + 394.5) * (671.2 - 671.2) + (394.5 + 394.5) * (671.2 - 885.8) + (394.5 + 247.6) * (885.8 - 885.8) + (247.6 + 247.6) * (885.8 - 906.7) + (247.6 + 125.1) * (906.7 - 906.7) + (125.1 + 125.1) * (906.7 - 574.4) + (125.1 + 300.3) * (574.4 - 574.4)\right) * 0.5 * 0.00694$
SCREENED PORCH (Non-living area)	217	$-\left((349.2 + 349.2) * (0.3 - 183.8) + (349.2 + 179.1) * (183.8 - 183.8) + (179.1 + 179.1) * (183.8 - 0.3) + (179.1 + 349.2) * (0.3 - 0.3)\right) * 0.5 * 0.00694$
COVERED DECK (Non-living area)	299	$-\left((559.6 + 559.6) * (78.9 - 130.3) + (559.6 + 566.1) * (130.3 - 130.3) + (566.1 + 566.1) * (130.3 - 192.3) + (566.1 + 580.2) * (192.3 - 192.3) + (580.2 + 580.2) * (192.3 - 275.9) + (580.2 + 566.1) * (275.9 - 275.9) + (566.1 + 566.1) * (275.9 - 312.9) + (566.1 + 349.2) * (312.9 - 312.9) + (349.2 + 349.2) * (312.9 - 130.3) + (349.2 + 515.9) * (130.3 - 130.3) + (515.9 + 515.9) * (130.3 - 78.9) + (515.9 + 559.6) * (78.9 - 78.9)\right) * 0.5 * 0.00694$

1215 Pine Forest Dr, Van Wyck, Lancaster, Lancaster County, South Carolina, United States, 29720

Gross Living Area: 2969 sq. ft

Level 2

2nd floor
[AREA: 735]



1215 Pine Forest Dr, Van Wyck, Lancaster, Lancaster County, South Carolina, United States, 29720

Gross Living Area: 2969 sq. ft

Level 2

Space	Area (sq. ft)	Calculation <small>Coordinate Polygon Area Algorithm using inches</small>
2nd floor (Living area)	735	$-\left((179.1 + 179.1) * (348.3 - 486.1) + (179.1 + 349.2) * (486.1 - 486.1) + (349.2 + 349.2) * (486.1 - 547.1) + (349.2 + 584.3) * (547.1 - 547.1) + (584.3 + 584.3) * (547.1 - 702.8) + (584.3 + 388.5) * (702.8 - 702.8) + (388.5 + 388.5) * (702.8 - 632.6) + (388.5 + 334.3) * (632.6 - 632.6) + (334.3 + 328.3) * (632.6 - 626.6) + (328.3 + 328.3) * (626.6 - 626.8) + (328.3 + 315.7) * (626.8 - 626.8) + (315.7 + 315.7) * (626.8 - 885.8) + (315.7 + 204.9) * (885.8 - 885.8) + (204.9 + 204.9) * (885.8 - 787.2) + (204.9 + 193) * (787.2 - 787.2) + (193 + 187) * (787.2 - 793.2) + (187 + 125.1) * (793.2 - 793.2) + (125.1 + 125.1) * (793.2 - 719.5) + (125.1 + 187) * (719.5 - 719.5) + (187 + 193) * (719.5 - 725.5) + (193 + 205.2) * (725.5 - 725.5) + (205.2 + 205.2) * (725.5 - 626.3) + (205.2 + 187) * (626.3 - 626.3) + (187 + 187) * (626.3 - 603.1) + (187 + 125.1) * (603.1 - 603.1) + (125.1 + 125.1) * (603.1 - 348.3) + (125.1 + 179.1) * (348.3 - 348.3)) * 0.5 * 0.00694$
BONUS ROOM (Non-living area)	33	$-\left((328.3 + 334.3) * (626.7 - 632.6) + (334.3 + 334.3) * (632.6 - 885.8) + (334.3 + 315.7) * (885.8 - 885.8) + (315.7 + 315.7) * (885.8 - 626.8) + (315.7 + 328.3) * (626.8 - 626.8) + (328.3 + 328.3) * (626.8 - 626.7)) * 0.5 * 0.00694$
BONUS ROOM (Non-living area)	12	$-\left((204.9 + 204.9) * (787.2 - 885.8) + (204.9 + 187) * (885.8 - 885.8) + (187 + 187) * (885.8 - 793.2) + (187 + 193) * (793.2 - 787.2) + (193 + 204.9) * (787.2 - 787.2)) * 0.5 * 0.00694$
BONUS ROOM (Non-living area)	12	$-\left((205.2 + 205.2) * (626.3 - 725.5) + (205.2 + 193) * (725.5 - 725.5) + (193 + 187) * (725.5 - 719.5) + (187 + 187) * (719.5 - 626.3) + (187 + 205.2) * (626.3 - 626.3)) * 0.5 * 0.00694$