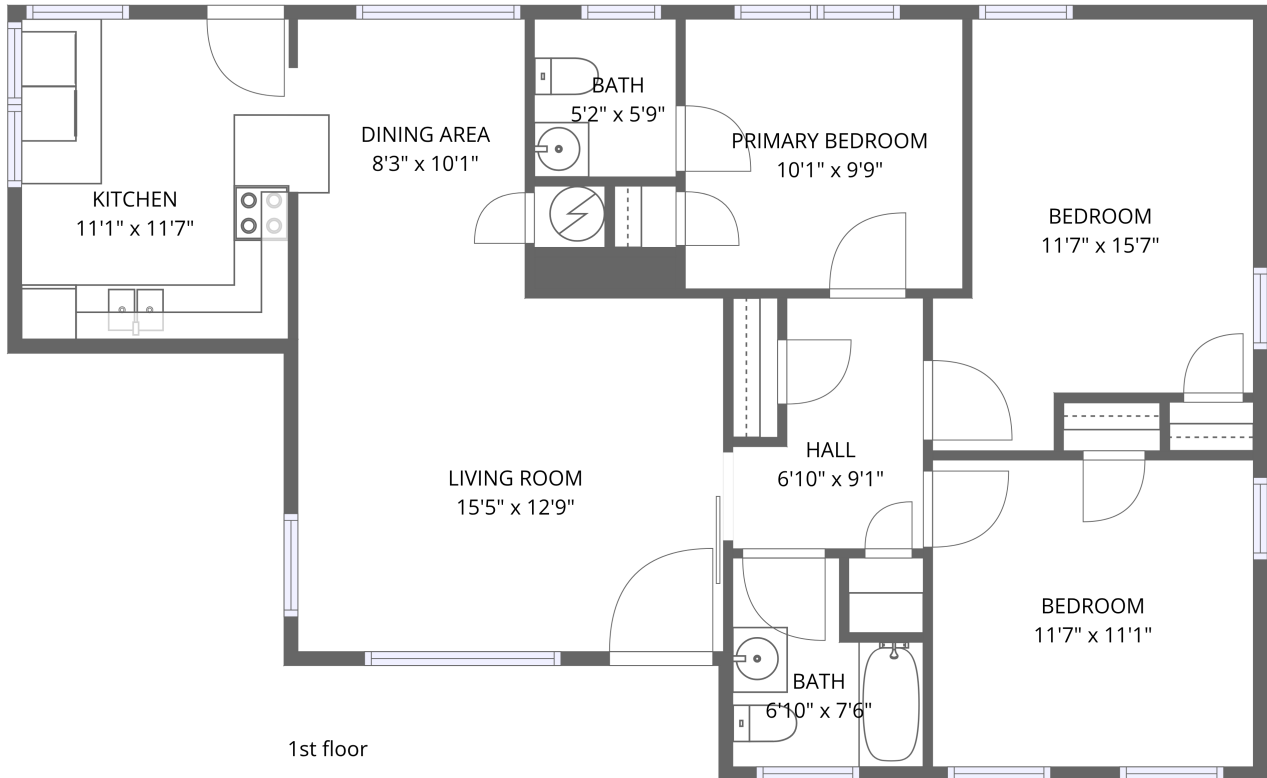


Home data report

4951 Flamingo Rd, Memphis, TN, US



Total Area: 988 sq. ft

1st Floor: 988 sq. ft

Excluded: Walls: 72 sq. ft

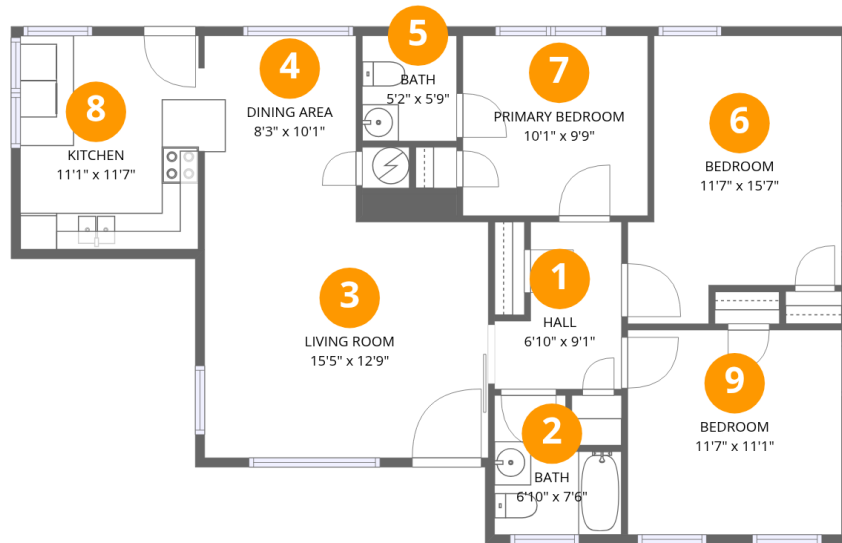
Property summary

 **1** Floors

 **3** Bedrooms

 **1** Bathrooms

 **1** Half baths



Room dimensions

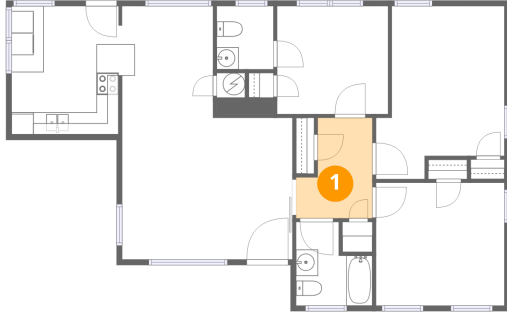
Floor 1

Total:988sqft

Excluded: 0sqft

#		Dimensions	sqft	Counted as living area
1	Hall	6'10" x 9'1"	52 sq. ft	Yes
2	Bath	6'10" x 7'6"	43 sq. ft	Yes
3	Living Room	15'5" x 12'9"	197 sq. ft	Yes
4	Dining Area	8'3" x 10'1"	80 sq. ft	Yes
5	Bath	5'2" x 5'9"	29 sq. ft	Yes
6	Bedroom	11'7" x 15'7"	152 sq. ft	Yes
7	Primary Bedroom	10'1" x 9'9"	98 sq. ft	Yes
8	Kitchen	11'1" x 11'7"	117 sq. ft	Yes
9	Bedroom	11'7" x 11'1"	129 sq. ft	Yes

1 Floor 1 - Hall



Dimensions: 6'10" x 9'1"
Area: 52 sq. ft
Counted as living area: Yes

Heated: Yes
Finished: Yes
Enclosed: Yes
Contiguous: Yes
Permitted: Yes
Wet space: No
Addition: No
Conversion: No

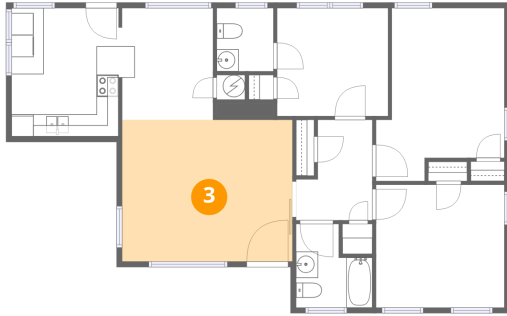
2 Floor 1 - Bath



Dimensions: 6'10" x 7'6"
Area: 43 sq. ft
Counted as living area: Yes

Heated: Yes
Finished: Yes
Enclosed: Yes
Contiguous: Yes
Permitted: Yes
Wet space: Yes
Addition: No
Conversion: No

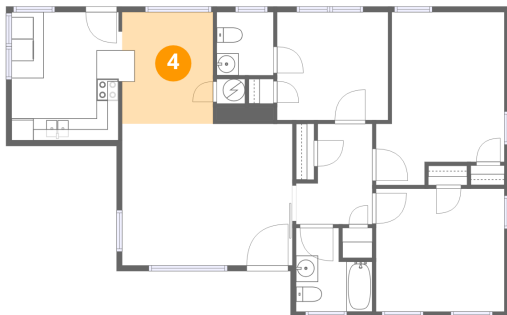
3 Floor 1 - Living Room



Dimensions: 15'5" x 12'9"
Area: 197 sq. ft
Counted as living area: Yes

Heated: Yes
Finished: Yes
Enclosed: Yes
Contiguous: Yes
Permitted: Yes
Wet space: No
Addition: No
Conversion: No

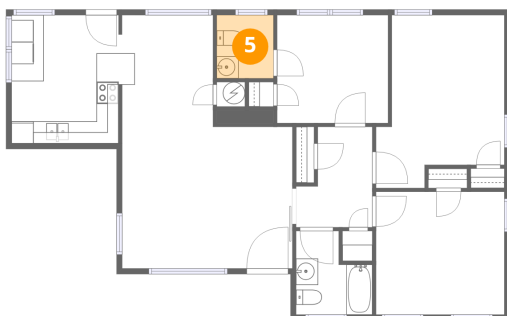
4 Floor 1 - Dining Area



Dimensions: 8'3" x 10'1"
Area: 80 sq. ft
Counted as living area: Yes

Heated: Yes
Finished: Yes
Enclosed: Yes
Contiguous: Yes
Permitted: Yes
Wet space: No
Addition: No
Conversion: No

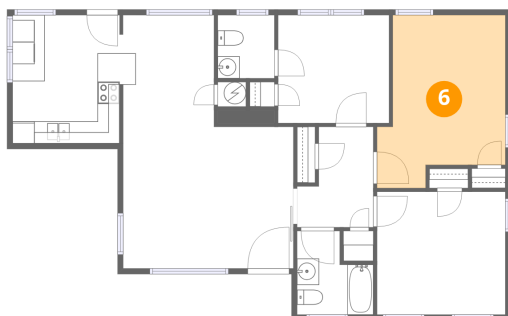
5 Floor 1 - Bath



Dimensions: 5'2" x 5'9"
Area: 29 sq. ft
Counted as living area: Yes

Heated: Yes
Finished: Yes
Enclosed: Yes
Contiguous: Yes
Permitted: Yes
Wet space: Yes
Addition: No
Conversion: No

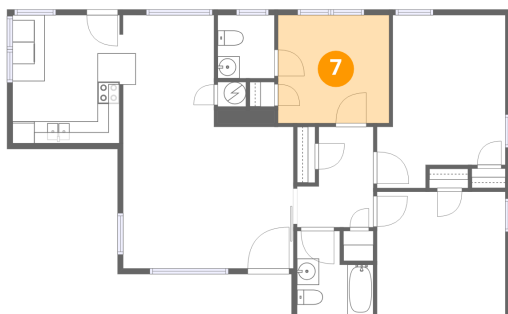
6 Floor 1 - Bedroom



Dimensions: 11'7" x 15'7"
Area: 152 sq. ft
Counted as living area: Yes

Heated: Yes
Finished: Yes
Enclosed: Yes
Contiguous: Yes
Permitted: Yes
Wet space: No
Addition: No
Conversion: No

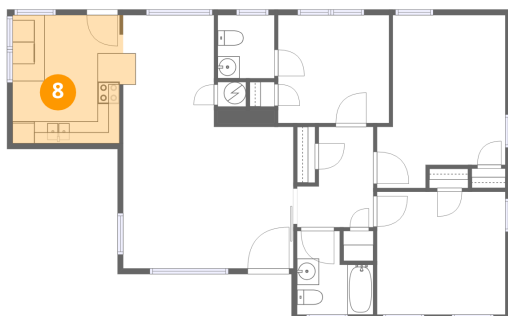
7 Floor 1 - Primary Bedroom



Dimensions: 10'1" x 9'9"
Area: 98 sq. ft
Counted as living area: Yes

Heated: Yes
Finished: Yes
Enclosed: Yes
Contiguous: Yes
Permitted: Yes
Wet space: No
Addition: No
Conversion: No

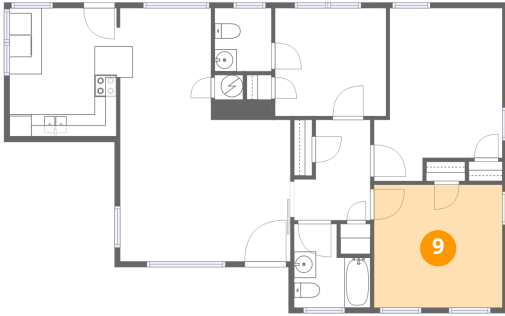
8 Floor 1 - Kitchen



Dimensions: 11'1" x 11'7"
Area: 117 sq. ft
Counted as living area: Yes

Heated: Yes
Finished: Yes
Enclosed: Yes
Contiguous: Yes
Permitted: Yes
Wet space: No
Addition: No
Conversion: No

9 Floor 1 - Bedroom



Dimensions: 11'7" x 11'1"
Area: 129 sq. ft
Counted as living area: Yes

Heated: Yes
Finished: Yes
Enclosed: Yes
Contiguous: Yes
Permitted: Yes
Wet space: No
Addition: No
Conversion: No