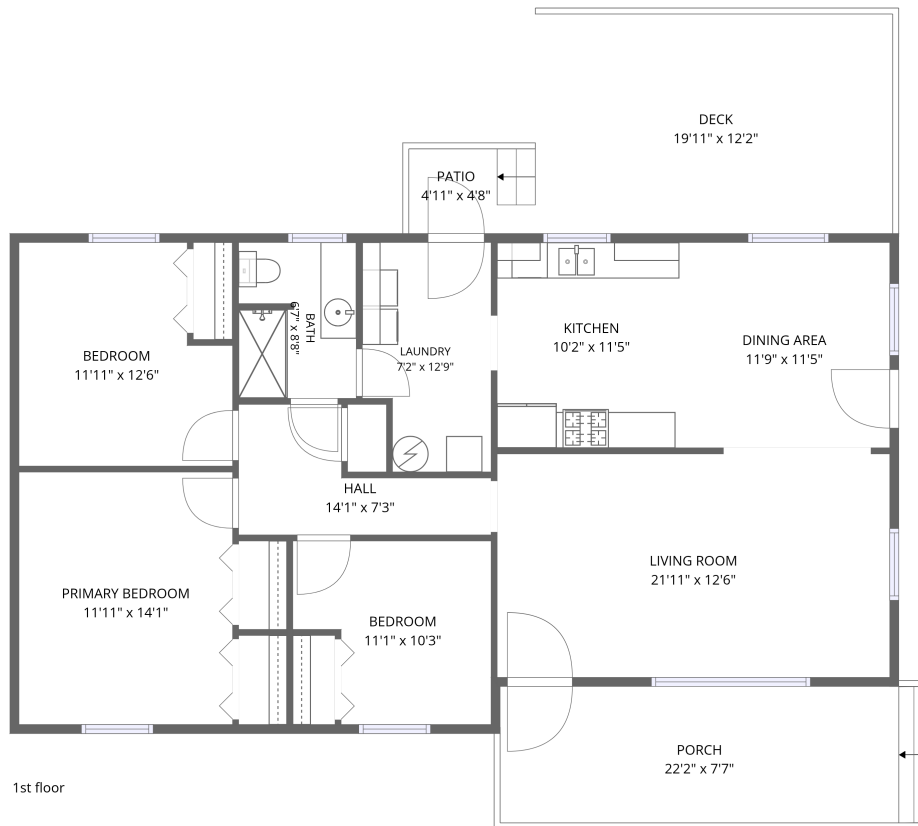


Home data report

3250 E 600 N, Greenfield, IN, US



**Total Area: 1245 sq. ft**

1st Floor: 1245 sq. ft

Excluded: Porch 182 sq. ft, Deck 241 sq. ft, Patio 23 sq. ft, Walls: 76 sq. ft

## Property summary

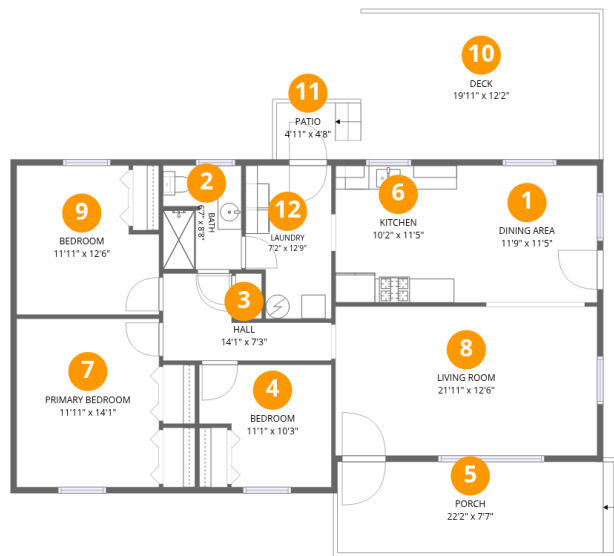
 **1** Floors

 **3** Bedrooms

 **1** Bathrooms

# Home data report

## 3250 E 600 N, Greenfield, IN, US



### Room dimensions

Floor 1

Total: 1245sqft Excluded: 446sqft

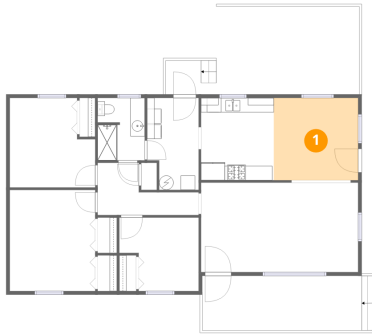
#		Dimensions	sqft	Counted as living area
1	Dining Area	11'9" x 11'5"	134 sq. ft	Yes
2	Bath	6'7" x 8'8"	56 sq. ft	Yes
3	Hall	14'1" x 7'3"	68 sq. ft	Yes
4	Bedroom	11'1" x 10'3"	99 sq. ft	Yes
5	Porch	22'2" x 7'7"	182 sq. ft	No
6	Kitchen	10'2" x 11'5"	116 sq. ft	Yes
7	Primary Bedroom	11'11" x 14'1"	167 sq. ft	Yes
8	Living Room	21'11" x 12'6"	273 sq. ft	Yes
9	Bedroom	11'11" x 12'6"	134 sq. ft	Yes
10	Deck	19'11" x 12'2"	241 sq. ft	No
11	Patio	4'11" x 4'8"	23 sq. ft	No

Home data report

**3250 E 600 N,Greenfield,IN,US**

#		Dimensions	sqft	Counted as living area
12	Laundry	7'2" x 12'9"	85 sq. ft	Yes

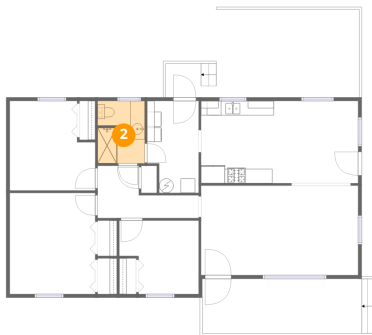
## 1 Floor 1 - Dining Area



Dimensions: 11'9" x 11'5"  
Area: 134 sq. ft  
Counted as living area: Yes

Heated: Yes  
Finished: Yes  
Enclosed: Yes  
Contiguous: Yes  
Permitted: Yes  
Wet space: No  
Addition: No  
Conversion: No

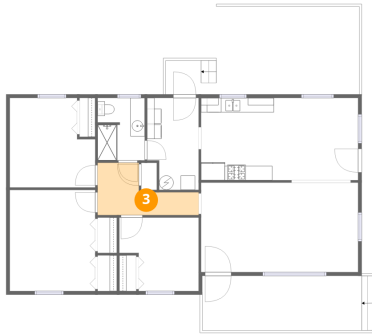
## 2 Floor 1 - Bath



Dimensions: 6'7" x 8'8"  
Area: 56 sq. ft  
Counted as living area: Yes

Heated: Yes  
Finished: Yes  
Enclosed: Yes  
Contiguous: Yes  
Permitted: Yes  
Wet space: Yes  
Addition: No  
Conversion: No

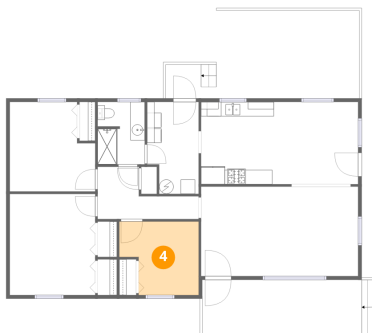
### 3 Floor 1 - Hall



Dimensions: 14'1" x 7'3"  
Area: 68 sq. ft  
Counted as living area: Yes

Heated: Yes  
Finished: Yes  
Enclosed: Yes  
Contiguous: Yes  
Permitted: Yes  
Wet space: No  
Addition: No  
Conversion: No

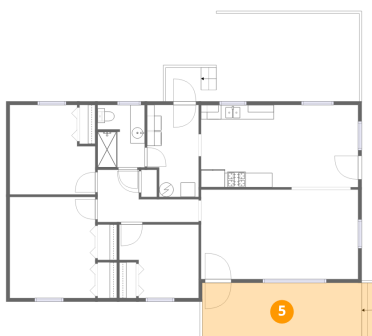
### 4 Floor 1 - Bedroom



Dimensions: 11'1" x 10'3"  
Area: 99 sq. ft  
Counted as living area: Yes

Heated: Yes  
Finished: Yes  
Enclosed: Yes  
Contiguous: Yes  
Permitted: Yes  
Wet space: No  
Addition: No  
Conversion: No

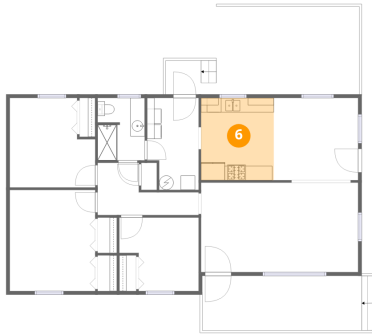
### 5 Floor 1 - Porch



Dimensions: 22'2" x 7'7"  
Area: 182 sq. ft  
Counted as living area: No

Heated: No  
Finished: No  
Enclosed: No  
Contiguous: Yes  
Permitted: Yes  
Wet space: No  
Addition: No  
Conversion: No

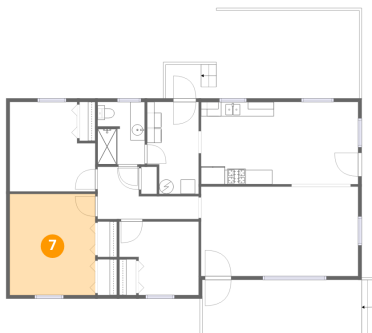
## 6 Floor 1 - Kitchen



Dimensions: 10'2" x 11'5"  
Area: 116 sq. ft  
Counted as living area: Yes

Heated: Yes  
Finished: Yes  
Enclosed: Yes  
Contiguous: Yes  
Permitted: Yes  
Wet space: No  
Addition: No  
Conversion: No

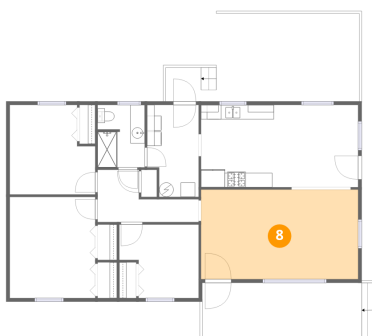
## 7 Floor 1 - Primary Bedroom



Dimensions: 11'11" x 14'1"  
Area: 167 sq. ft  
Counted as living area: Yes

Heated: Yes  
Finished: Yes  
Enclosed: Yes  
Contiguous: Yes  
Permitted: Yes  
Wet space: No  
Addition: No  
Conversion: No

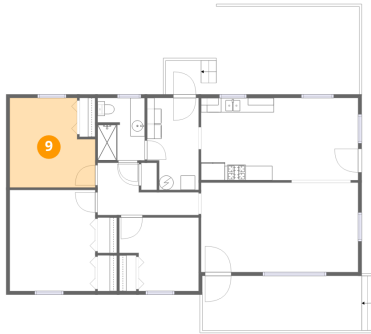
## 8 Floor 1 - Living Room



Dimensions: 21'11" x 12'6"  
Area: 273 sq. ft  
Counted as living area: Yes

Heated: Yes  
Finished: Yes  
Enclosed: Yes  
Contiguous: Yes  
Permitted: Yes  
Wet space: No  
Addition: No  
Conversion: No

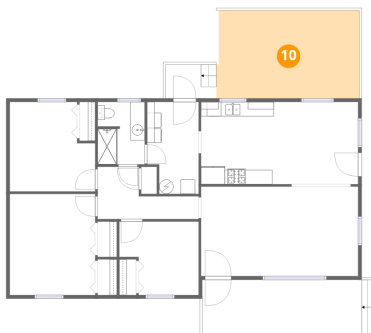
## 9 Floor 1 - Bedroom



Dimensions: 11'11" x 12'6"  
Area: 134 sq. ft  
Counted as living area: Yes

Heated: Yes  
Finished: Yes  
Enclosed: Yes  
Contiguous: Yes  
Permitted: Yes  
Wet space: No  
Addition: No  
Conversion: No

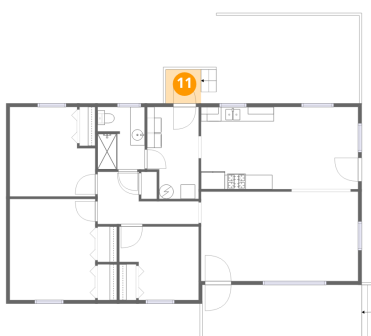
## 10 Floor 1 - Deck



Dimensions: 19'11" x 12'2"  
Area: 241 sq. ft  
Counted as living area: No

Heated: No  
Finished: No  
Enclosed: No  
Contiguous: Yes  
Permitted: Yes  
Wet space: No  
Addition: No  
Conversion: No

## 11 Floor 1 - Patio

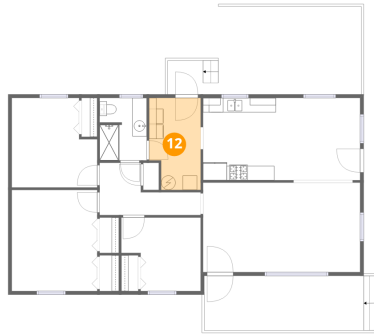


Dimensions: 4'11" x 4'8"  
Area: 23 sq. ft  
Counted as living area: No

Heated: No  
Finished: No  
Enclosed: No  
Contiguous: Yes  
Permitted: Yes  
Wet space: No  
Addition: No  
Conversion: No

**12** Floor 1 - Laundry

---



Dimensions: 7'2" x 12'9"  
Area: 85 sq. ft  
Counted as living area: Yes

Heated: Yes  
Finished: Yes  
Enclosed: Yes  
Contiguous: Yes  
Permitted: Yes  
Wet space: No  
Addition: No  
Conversion: No