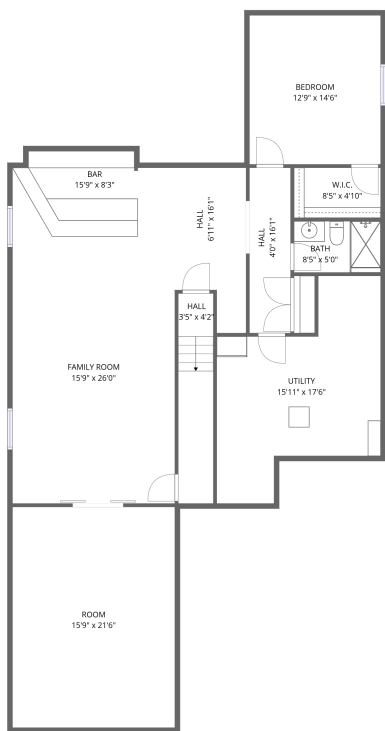
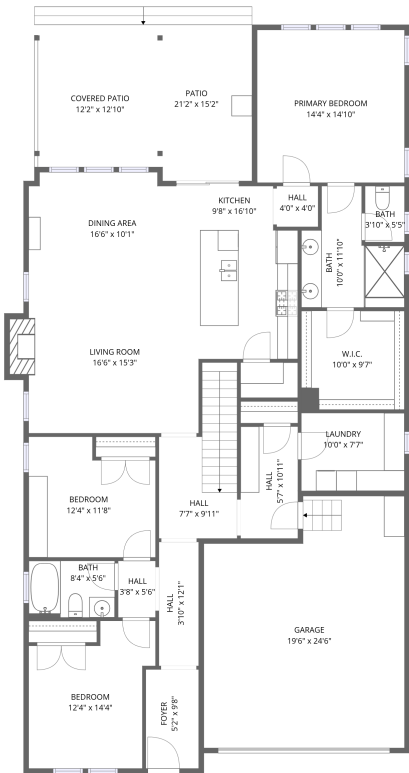


Home data report

1830 Willow Drive, Erie, Weld County, Colorado, United States, 80516



Basement 1



1st floor


Total Area: 2896 sq. ft

Basement 1: 1085 sq. ft, 1st Floor: 1811 sq. ft

Excluded: Room 339 sq. ft, Utility 247 sq. ft, Garage 433 sq. ft, Patio 183 sq. ft, Covered patio 155 sq. ft, Fireplace 12 sq. ft, Walls: 237 sq. ft

Property summary

2 Floors

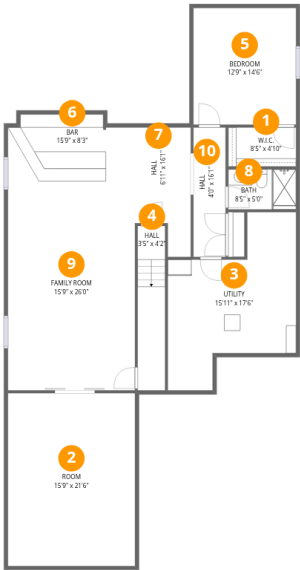
4 Bedrooms

3 Bathrooms

1 Garages

Home data report

1830 Willow Drive, Erie, Weld County, Colorado, United States, 80516



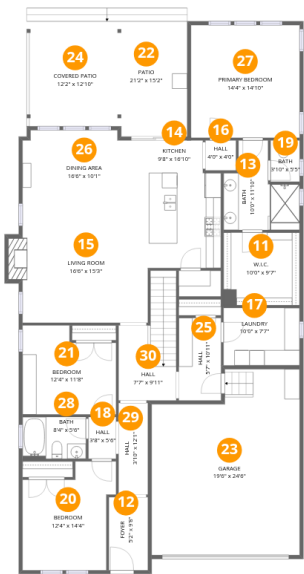
Room dimensions

Floor 1 Below grade Total:1085sqft Excluded: 586sqft

#		Dimensions	sqft	Counted as living area
1	W.I.C.	8'5" x 4'10"	41 sq. ft	Yes
2	Room	15'9" x 21'6"	339 sq. ft	No
3	Utility	15'11" x 17'6"	279 sq. ft	No
4	Hall	3'5" x 4'2"	14 sq. ft	Yes
5	Bedroom	12'9" x 14'6"	184 sq. ft	Yes
6	Bar	15'9" x 8'3"	131 sq. ft	Yes
7	Hall	6'11" x 16'1"	111 sq. ft	Yes
8	Bath	8'5" x 5'0"	42 sq. ft	Yes
9	Family Room	15'9" x 26'0"	410 sq. ft	Yes
10	Hall	4'0" x 16'1"	64 sq. ft	Yes

Home data report

1830 Willow Drive, Erie, Weld County, Colorado, United States, 80516



Room dimensions

Floor 2 Total:1811sqft Excluded: 783sqft

#		Dimensions	sqft	Counted as living area
11	W.I.C.	10'0" x 9'7"	96 sq. ft	Yes
12	Foyer	5'2" x 9'8"	50 sq. ft	Yes
13	Bath	10'0" x 11'10"	118 sq. ft	Yes
14	Kitchen	9'8" x 16'10"	162 sq. ft	Yes
15	Living Room	16'6" x 15'3"	253 sq. ft	Yes
16	Hall	4'0" x 4'0"	16 sq. ft	Yes
17	Laundry	10'0" x 7'7"	76 sq. ft	Yes
18	Hall	3'8" x 5'6"	20 sq. ft	Yes
19	Bath	3'10" x 5'5"	21 sq. ft	Yes
20	Bedroom	12'4" x 14'4"	177 sq. ft	Yes
21	Bedroom	12'4" x 11'8"	144 sq. ft	Yes

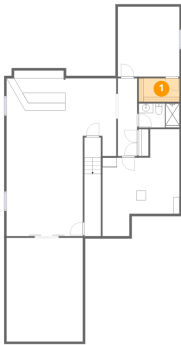
Home data report

**1830 Willow Drive, Erie, Weld County, Colorado, United States,
80516**

#		Dimensions	sqft	Counted as living area
22	Patio	21'2" x 15'2"	321 sq. ft	No
23	Garage	19'6" x 24'6"	478 sq. ft	No
24	Covered Patio	12'2" x 12'10"	155 sq. ft	No
25	Hall	5'7" x 10'11"	61 sq. ft	Yes
26	Dining Area	16'6" x 10'1"	167 sq. ft	Yes
27	Primary Bedroom	14'4" x 14'10"	212 sq. ft	Yes
28	Bath	8'4" x 5'6"	46 sq. ft	Yes
29	Hall	3'10" x 12'1"	47 sq. ft	Yes
30	Hall	7'7" x 9'11"	75 sq. ft	Yes

1830 Willow Drive, Erie, Weld County, Colorado, United States, 80516

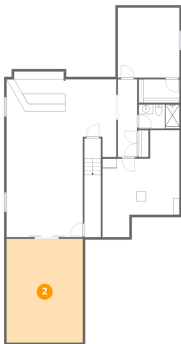
1 Floor 1 - W.I.C.



Dimensions: 8'5" x 4'10"
Area: 41 sq. ft
Counted as living area: Yes

Heated: Yes
Finished: Yes
Enclosed: Yes
Contiguous: Yes
Permitted: Yes
Wet space: No
Addition: No
Conversion: No

2 Floor 1 - Room

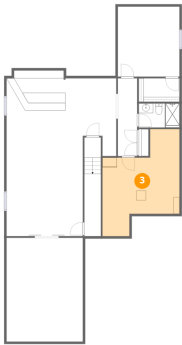


Dimensions: 15'9" x 21'6"
Area: 339 sq. ft
Counted as living area: No

Heated: Yes
Finished: No
Enclosed: Yes
Contiguous: Yes
Permitted: Yes
Wet space: No
Addition: No
Conversion: No

1830 Willow Drive, Erie, Weld County, Colorado, United States, 80516

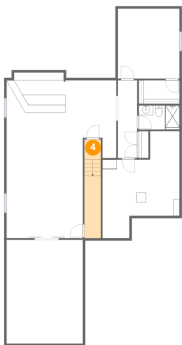
3 Floor 1 - Utility



Dimensions: 15'11" x 17'6"
Area: 279 sq. ft
Counted as living area: No

Heated: Yes
Finished: No
Enclosed: Yes
Contiguous: Yes
Permitted: Yes
Wet space: No
Addition: No
Conversion: No

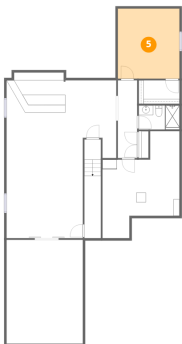
4 Floor 1 - Hall



Dimensions: 3'5" x 4'2"
Area: 14 sq. ft
Counted as living area: Yes

Heated: Yes
Finished: Yes
Enclosed: Yes
Contiguous: Yes
Permitted: Yes
Wet space: No
Addition: No
Conversion: No

5 Floor 1 - Bedroom

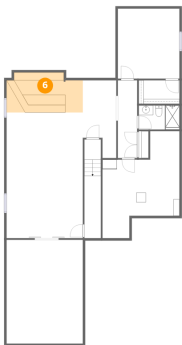


Dimensions: 12'9" x 14'6"
Area: 184 sq. ft
Counted as living area: Yes

Heated: Yes
Finished: Yes
Enclosed: Yes
Contiguous: Yes
Permitted: Yes
Wet space: No
Addition: No
Conversion: No

1830 Willow Drive, Erie, Weld County, Colorado, United States, 80516

6 Floor 1 - Bar



Dimensions: 15'9" x 8'3"
Area: 131 sq. ft
Counted as living area: Yes

Heated: Yes
Finished: Yes
Enclosed: Yes
Contiguous: Yes
Permitted: Yes
Wet space: No
Addition: No
Conversion: No

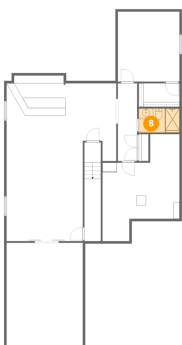
7 Floor 1 - Hall



Dimensions: 6'11" x 16'1"
Area: 111 sq. ft
Counted as living area: Yes

Heated: Yes
Finished: Yes
Enclosed: Yes
Contiguous: Yes
Permitted: Yes
Wet space: No
Addition: No
Conversion: No

8 Floor 1 - Bath

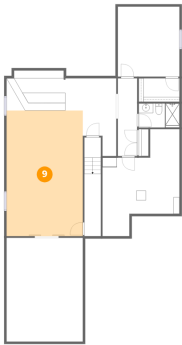


Dimensions: 8'5" x 5'0"
Area: 42 sq. ft
Counted as living area: Yes

Heated: Yes
Finished: Yes
Enclosed: Yes
Contiguous: Yes
Permitted: Yes
Wet space: Yes
Addition: No
Conversion: No

1830 Willow Drive, Erie, Weld County, Colorado, United States, 80516

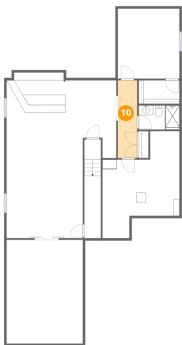
9 Floor 1 - Family Room



Dimensions: 15'9" x 26'0"
Area: 410 sq. ft
Counted as living area: Yes

Heated: Yes
Finished: Yes
Enclosed: Yes
Contiguous: Yes
Permitted: Yes
Wet space: No
Addition: No
Conversion: No

10 Floor 1 - Hall



Dimensions: 4'0" x 16'1"
Area: 64 sq. ft
Counted as living area: Yes

Heated: Yes
Finished: Yes
Enclosed: Yes
Contiguous: Yes
Permitted: Yes
Wet space: No
Addition: No
Conversion: No

11 Floor 2 - W.I.C.



Dimensions: 10'0" x 9'7"
Area: 96 sq. ft
Counted as living area: Yes

Heated: Yes
Finished: Yes
Enclosed: Yes
Contiguous: Yes
Permitted: Yes
Wet space: No
Addition: No
Conversion: No

Home data report

1830 Willow Drive, Erie, Weld County, Colorado, United States, 80516

12 Floor 2 - Foyer



Dimensions: 5'2" x 9'8"
Area: 50 sq. ft
Counted as living area: Yes

Heated: Yes
Finished: Yes
Enclosed: Yes
Contiguous: Yes
Permitted: Yes
Wet space: No
Addition: No
Conversion: No

13 Floor 2 - Bath



Dimensions: 10'0" x 11'10"
Area: 118 sq. ft
Counted as living area: Yes

Heated: Yes
Finished: Yes
Enclosed: Yes
Contiguous: Yes
Permitted: Yes
Wet space: Yes
Addition: No
Conversion: No

14 Floor 2 - Kitchen

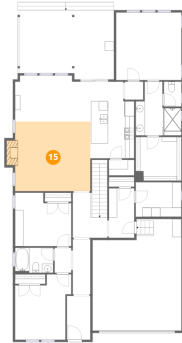


Dimensions: 9'8" x 16'10"
Area: 162 sq. ft
Counted as living area: Yes

Heated: Yes
Finished: Yes
Enclosed: Yes
Contiguous: Yes
Permitted: Yes
Wet space: No
Addition: No
Conversion: No

1830 Willow Drive, Erie, Weld County, Colorado, United States,
80516

15 Floor 2 - Living Room



Dimensions: 16'6" x 15'3"
Area: 253 sq. ft
Counted as living area: Yes

Heated: Yes
Finished: Yes
Enclosed: Yes
Contiguous: Yes
Permitted: Yes
Wet space: No
Addition: No
Conversion: No

16 Floor 2 - Hall



Dimensions: 4'0" x 4'0"
Area: 16 sq. ft
Counted as living area: Yes

Heated: Yes
Finished: Yes
Enclosed: Yes
Contiguous: Yes
Permitted: Yes
Wet space: No
Addition: No
Conversion: No

17 Floor 2 - Laundry



Dimensions: 10'0" x 7'7"
Area: 76 sq. ft
Counted as living area: Yes

Heated: Yes
Finished: Yes
Enclosed: Yes
Contiguous: Yes
Permitted: Yes
Wet space: No
Addition: No
Conversion: No

Home data report

1830 Willow Drive, Erie, Weld County, Colorado, United States, 80516

18 Floor 2 - Hall



Dimensions: 3'8" x 5'6"
Area: 20 sq. ft
Counted as living area: Yes

Heated: Yes
Finished: Yes
Enclosed: Yes
Contiguous: Yes
Permitted: Yes
Wet space: No
Addition: No
Conversion: No

19 Floor 2 - Bath



Dimensions: 3'10" x 5'5"
Area: 21 sq. ft
Counted as living area: Yes

Heated: Yes
Finished: Yes
Enclosed: Yes
Contiguous: Yes
Permitted: Yes
Wet space: Yes
Addition: No
Conversion: No

20 Floor 2 - Bedroom



Dimensions: 12'4" x 14'4"
Area: 177 sq. ft
Counted as living area: Yes

Heated: Yes
Finished: Yes
Enclosed: Yes
Contiguous: Yes
Permitted: Yes
Wet space: No
Addition: No
Conversion: No

Home data report

1830 Willow Drive, Erie, Weld County, Colorado, United States, 80516

21 Floor 2 - Bedroom



Dimensions: 12'4" x 11'8"
Area: 144 sq. ft
Counted as living area: Yes

Heated: Yes
Finished: Yes
Enclosed: Yes
Contiguous: Yes
Permitted: Yes
Wet space: No
Addition: No
Conversion: No

22 Floor 2 - Patio



Dimensions: 21'2" x 15'2"
Area: 321 sq. ft
Counted as living area: No

Heated: No
Finished: No
Enclosed: No
Contiguous: Yes
Permitted: Yes
Wet space: No
Addition: No
Conversion: No

23 Floor 2 - Garage



Dimensions: 19'6" x 24'6"
Area: 478 sq. ft
Counted as living area: No

Heated: No
Finished: No
Enclosed: Yes
Contiguous: Yes
Permitted: Yes
Wet space: No
Addition: No
Conversion: No

Home data report

1830 Willow Drive, Erie, Weld County, Colorado, United States, 80516

24 Floor 2 - Covered Patio



Dimensions: 12'2" x 12'10"
Area: 155 sq. ft
Counted as living area: No

Heated: No
Finished: No
Enclosed: No
Contiguous: Yes
Permitted: Yes
Wet space: No
Addition: No
Conversion: No

25 Floor 2 - Hall



Dimensions: 5'7" x 10'11"
Area: 61 sq. ft
Counted as living area: Yes

Heated: Yes
Finished: Yes
Enclosed: Yes
Contiguous: Yes
Permitted: Yes
Wet space: No
Addition: No
Conversion: No

26 Floor 2 - Dining Area



Dimensions: 16'6" x 10'1"
Area: 167 sq. ft
Counted as living area: Yes

Heated: Yes
Finished: Yes
Enclosed: Yes
Contiguous: Yes
Permitted: Yes
Wet space: No
Addition: No
Conversion: No

1830 Willow Drive, Erie, Weld County, Colorado, United States, 80516

27 Floor 2 - Primary Bedroom



Dimensions: 14'4" x 14'10"
Area: 212 sq. ft
Counted as living area: Yes

Heated: Yes
Finished: Yes
Enclosed: Yes
Contiguous: Yes
Permitted: Yes
Wet space: No
Addition: No
Conversion: No

28 Floor 2 - Bath



Dimensions: 8'4" x 5'6"
Area: 46 sq. ft
Counted as living area: Yes

Heated: Yes
Finished: Yes
Enclosed: Yes
Contiguous: Yes
Permitted: Yes
Wet space: Yes
Addition: No
Conversion: No

29 Floor 2 - Hall



Dimensions: 3'10" x 12'1"
Area: 47 sq. ft
Counted as living area: Yes

Heated: Yes
Finished: Yes
Enclosed: Yes
Contiguous: Yes
Permitted: Yes
Wet space: No
Addition: No
Conversion: No

1830 Willow Drive, Erie, Weld County, Colorado, United States, 80516

30 Floor 2 - Hall



Dimensions: 7'7" x 9'11"
Area: 75 sq. ft
Counted as living area: Yes

Heated: Yes
Finished: Yes
Enclosed: Yes
Contiguous: Yes
Permitted: Yes
Wet space: No
Addition: No
Conversion: No