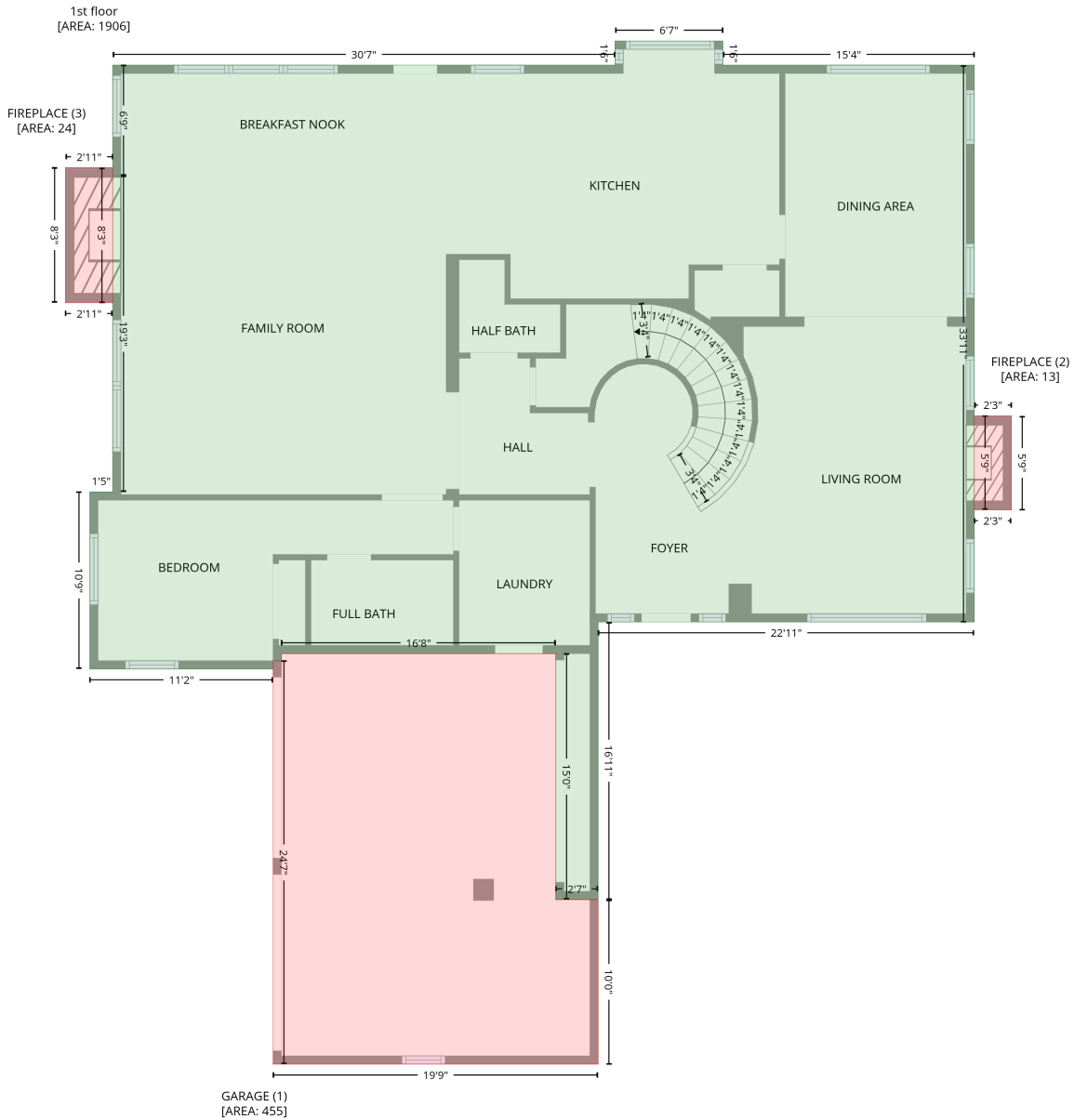


# 1506 Morning Star Dr, Morgan Hill, CA, US

Gross Living Area: 3394 sq. ft

## Level 1



Space	Area (sq. ft)	Calculation
1st floor (Living area)	1906	Coordinate Polygon Area Algorithm using inches $-((465.3 + 465.3) * (52 - 69.6) + (465.3 + 648.8) * (69.6 - 69.6) + (648.8 + 648.8) * (69.6 - 476.4) + (648.8 + 374.2) * (476.4 - 476.4) + (374.2 + 374.2) * (476.4 - 679.2) + (374.2 + 343.3) * (679.2 - 679.2) + (343.3 + 343.3) * (679.2 - 499.5) + (343.3 + 142.9) * (499.5 - 499.5) + (142.9 + 142.9) * (499.5 - 504.7) + (142.9 + 136.9) * (504.7 - 504.7) + (136.9 + 136.9) * (504.7 - 510.7) + (136.9 + 3.1) * (510.7 - 510.7) + (3.1 + 3.1) * (510.7 - 381.4) + (3.1 + 19.8) * (381.4 - 381.4) + (19.8 + 19.8) * (381.4 - 150.5) + (19.8 + 25.8) * (150.5 - 150.4) + (25.8 + 19.8) * (150.4 - 150.4) + (19.8 + 19.8) * (150.4 - 69.6) + (19.8 + 386.5) * (69.6 - 69.6) + (386.5 + 386.5) * (69.6 - 52) + (386.5 + 465.3) * (52 - 52)) * 0.5 * 0.00694$

# 1506 Morning Star Dr, Morgan Hill, CA, US

Gross Living Area: 3394 sq. ft

## Level 1

Space	Area (sq. ft)	Calculation <small>Coordinate Polygon Area Algorithm using inches</small>
GARAGE (Non-living area)	455	$-\left((343.3 + 343.3) * (499.5 - 679.2) + (343.3 + 374.2) * (679.2 - 679.2) + (374.2 + 374.2) * (679.2 - 799.4) + (374.2 + 136.9) * (799.4 - 799.4) + (136.9 + 136.9) * (799.4 - 504.7) + (136.9 + 142.9) * (504.7 - 504.7) + (142.9 + 142.9) * (504.7 - 499.5) + (142.9 + 343.3) * (499.5 - 499.5)\right) * 0.5 * 0.00694$
FIREPLACE (Non-living area)	13	$-\left((676 + 676) * (325.8 - 394.5) + (676 + 648.8) * (394.5 - 394.5) + (648.8 + 648.8) * (394.5 - 325.8) + (648.8 + 676) * (325.8 - 325.8)\right) * 0.5 * 0.00694$
FIREPLACE (Non-living area)	24	$-\left((19.8 + 19.8) * (144.4 - 243.1) + (19.8 + -14.7) * (243.1 - 243.1) + (-14.7 + -14.7) * (243.1 - 144.4) + (-14.7 + 19.8) * (144.4 - 144.4)\right) * 0.5 * 0.00694$



# 1506 Morning Star Dr, Morgan Hill, CA, US

Gross Living Area: 3394 sq. ft

## Level 2

Space	Area (sq. ft)	Calculation <small>Coordinate Polygon Area Algorithm using inches</small>
2nd floor (Living area)	1488	$-\left((372.2 + 372.2) * (388.9 - 579) + (372.2 + 372.7) * (579 - 579) + (372.7 + 372.7) * (579 - 585) + (372.7 + 282.7) * (585 - 585) + (282.7 + 282.7) * (585 - 774) + (282.7 + 136.9) * (774 - 774) + (136.9 + 136.9) * (774 - 482.4) + (136.9 + 19.8) * (482.4 - 482.4) + (19.8 + 19.8) * (482.4 - 69.6) + (19.8 + 417.7) * (69.6 - 69.6) + (417.7 + 417.7) * (69.6 - 238.3) + (417.7 + 432.9) * (238.3 - 238.3) + (432.9 + 432.9) * (238.3 - 244.3) + (432.9 + 445.1) * (244.3 - 248.9) + (445.1 + 458.9) * (248.9 - 257.6) + (458.9 + 470.8) * (257.6 - 268.9) + (470.8 + 480.2) * (268.9 - 282.2) + (480.2 + 486.8) * (282.2 - 297.2) + (486.8 + 490.4) * (297.2 - 313.1) + (490.4 + 490.9) * (313.1 - 329.5) + (490.9 + 488.1) * (329.5 - 345.6) + (488.1 + 482.2) * (345.6 - 360.8) + (482.2 + 473.5) * (360.8 - 374.6) + (473.5 + 462.2) * (374.6 - 386.5) + (462.2 + 449.2) * (386.5 - 395.7) + (449.2 + 424.7) * (395.7 - 354.5) + (424.7 + 431.2) * (354.5 - 350.2) + (431.2 + 435.7) * (350.2 - 345.3) + (435.7 + 439.6) * (345.3 - 339.2) + (439.6 + 442) * (339.2 - 333.2) + (442 + 443.2) * (333.2 - 326.1) + (443.2 + 443.1) * (326.1 - 319) + (443.1 + 441.6) * (319 - 312.1) + (441.6 + 438.7) * (312.1 - 306) + (438.7 + 434.7) * (306 - 300.2) + (434.7 + 429.5) * (300.2 - 295.2) + (429.5 + 423.6) * (295.2 - 291.5) + (423.6 + 417.1) * (291.5 - 289) + (417.1 + 410.4) * (289 - 288) + (410.4 + 403.2) * (288 - 288.1) + (403.2 + 396.3) * (288.1 - 289.5) + (396.3 + 389.8) * (289.5 - 292.3) + (389.8 + 384.5) * (292.3 - 296.3) + (384.5 + 379.3) * (296.3 - 301.7) + (379.3 + 375.8) * (301.7 - 307.5) + (375.8 + 373.1) * (307.5 - 314.2) + (373.1 + 372.2) * (314.2 - 320.9) + (372.2 + 372.2) * (320.9 - 388.9)) * 0.5 * 0.00694$
OPEN TO BELOW (Non-living area)	253	$-\left((504.9 + 504.9) * (238.3 - 585) + (504.9 + 372.7) * (585 - 585) + (372.7 + 372.7) * (585 - 579) + (372.7 + 372.2) * (579 - 320.9) + (372.2 + 373.1) * (320.9 - 314.2) + (373.1 + 375.8) * (314.2 - 307.5) + (375.8 + 379.3) * (307.5 - 301.7) + (379.3 + 384.5) * (301.7 - 296.3) + (384.5 + 389.8) * (296.3 - 292.3) + (389.8 + 396.3) * (292.3 - 289.5) + (396.3 + 403.2) * (289.5 - 288.1) + (403.2 + 410.4) * (288.1 - 288) + (410.4 + 417.1) * (288 - 289) + (417.1 + 423.6) * (289 - 291.5) + (423.6 + 429.5) * (291.5 - 295.2) + (429.5 + 434.7) * (295.2 - 300.2) + (434.7 + 438.7) * (300.2 - 306) + (438.7 + 441.6) * (306 - 312.1) + (441.6 + 443.1) * (312.1 - 319) + (443.1 + 443.2) * (319 - 326.1) + (443.2 + 442) * (326.1 - 333.2) + (442 + 439.6) * (333.2 - 339.2) + (439.6 + 435.7) * (339.2 - 345.3) + (435.7 + 431.2) * (345.3 - 350.2) + (431.2 + 424.7) * (350.2 - 354.5) + (424.7 + 449.2) * (354.5 - 395.7) + (449.2 + 462.2) * (395.7 - 386.5) + (462.2 + 473.5) * (386.5 - 374.6) + (473.5 + 482.2) * (374.6 - 360.8) + (482.2 + 488.1) * (360.8 - 345.6) + (488.1 + 490.9) * (345.6 - 329.5) + (490.9 + 490.4) * (329.5 - 313.1) + (490.4 + 486.8) * (313.1 - 297.2) + (486.8 + 480.2) * (297.2 - 282.2) + (480.2 + 470.8) * (282.2 - 268.9) + (470.8 + 458.9) * (268.9 - 257.6) + (458.9 + 445.1) * (257.6 - 248.9) + (445.1 + 432.9) * (248.9 - 244.3) + (432.9 + 432.9) * (244.3 - 238.3) + (432.9 + 504.9) * (238.3 - 238.3)) * 0.5 * 0.00694$